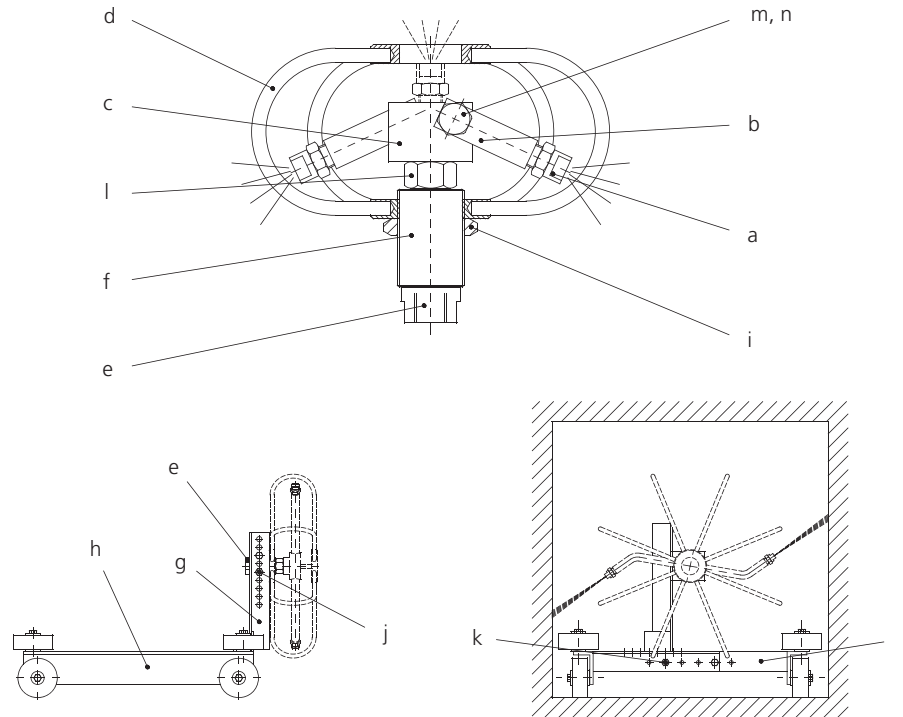


Assembly and Service instructions



Assembly instructions

Assembly and connection

1. Screw the nozzles (a / accessory) into the housings (b) of the distributor (c).
2. Turn the adjustable rotor guard (d) to the desired operating position and secure with nut (i) tightly.
3. Fasten tightly the high pressure hose or the high pressure pipe connection (e) of the swivel (f) coming from the high pressure pump.

Installation onto the TYR-Mobile (accessory)

1. Install the duct cleaner with the swivel (f) to the support (g) of the TYR mobile (h / accessory) and tighten it by hand. Secure the rotor guard (d) with the nut (i) to the support (g).
2. Adapt the TYR mobile (h / accessory) to the object to be cleaned, by adjusting the frame (j) and the support (g) with the bolts (k).
3. Fasten tightly the high pressure hose or the high pressure pipe connection (e) of the swivel (f) coming from the high pressure pump.



For your own safety

- Read all instructions before the initial operation. Check their proper condition and that they operate safely.
- Always use protection gear when using products connected to high pressure.
- Never direct any high pressure water-jet at humans, animals or electric installations.
- Before any maintenance or nozzle-change, turn off the high pressure water supply, e.g.: turn off and secure the power switch.
- After turning off the system, allow all self propelled equipment to come to a complete stop before handling.
- Safety regulations and guidelines (Accident Prevention Rules) from the manufacturer of your high pressure cleaner are applicable.
- Nozzle installation according to Nozzle manufacturer.
- Do not run the unit if spray-arm is out of balance or bent, damage to the swivel will result.
- No modifications to the unit are permitted.
- The equipment may be installed and used only by particularly trained technical personnel.

Service instructions

Exchanging the swivel

1. Hold the coupling (l) on the swivel (f) with a spanner and remove the distributor (c) by hand.
2. Loosen the nut (i) with a spanner then turn out the swivel (f) from the rotor guard (d).
3. Implement the procedure for the installation of the new swivel (f) in reverse order.

Exchanging the distributor

1. Hold the coupling (l) on the swivel (f) with a spanner and remove the distributor (c) by hand.
2. Loosen the hollow bolts (m). Remove the seal-rings (n) and the housings (b) from the distributor (c).
3. Implement the procedure for the installation of the new distributor(c) in reverse order.

Exchanging the rotor guard

1. Hold the coupling (l) on the swivel (f) with a spanner and remove the distributor (c) by hand.
2. Disconnect the nut (i) with a spanner then turn out the swivel (f) from the rotor guard (d).
3. Implement the procedure for the installation of the new rotor guard (d) in reverse order.

Spare parts list

Pos. Part No. Description

- 1a 57.063 Swivel (1/4"NPT-F) - G3/8"M
- 1b 57.163 Swivel (3/8"NPT-F) - G3/8"M
- 2a 900.859 Rotor guard ø 3"
- 2b 900.861 Rotor guard ø 6"
- 2c 900.864 Rotor guard ø 12"
- 2d 900.865 Rotor guard ø 16"
- 2e 900.866 Rotor guard ø 20"
- 2f 900.867 Rotor guard ø 24"
- 3a 900.150 Distributor for ø 3" - 2s
- 3b 900.564 Distributor for ø 3" - 3s
- 3c 900.386 Distributor for ø 6" - 2s
- 3d 900.174 Distributor for ø 6" - 3s
- 3e 900.382 Distributor for ø 12"/I-ø 24" - 2s
- 3f 900.568 Distributor for ø 12"/I-ø 24" - 3s
- 4 900.975 Bulkhead nut M28x1.5
- 5 900.171 Hollow bolt
- 6a 900.172 Housing
- 6b 900.175 Housing
- 7a 900.176 Pipe for rotor arm ø 12"
- 7b 900.780 Pipe for rotor arm ø 16"
- 7c 900.183 Pipe for rotor arm ø 20"
- 7d 900.177 Pipe for rotor arm ø 24"
- 8 900.170 Seal ring ø13.4/10.2x1 (Cu)

Accessories (not included)

Pos. Part No. Description

- 9a 15025 Nozzle, 1/8"NPT-M (pump capacity ~ 4 gpm)
- 9b 1503 Nozzle, 1/8"NPT-M (pump capacity ~ 5 gpm)
- 9c 1504 Nozzle, 1/8"NPT-M (pump capacity ~ 6 gpm)
- 10a 81.902 TYR Mobile small (see chart below)
- 10b 81.903 TYR Mobile large (see chart below)
- 11 81.905 TYR Hook + Pin

TYR Mobile stainless (adjustable)

Part No.	TYR Mobile	D	a(min.)	a(max.)	b(min.)	b(max.)	L
81.902	small weight = 9.5 lbs	12"	12"	18"	12"	14"	15"
		16"	16"	18"	16"	16"	15"
81.903	large weight = 15.6 lbs	20"	20"	33"	20"	25"	25"
		24"	24"	33"	24"	27"	25"

