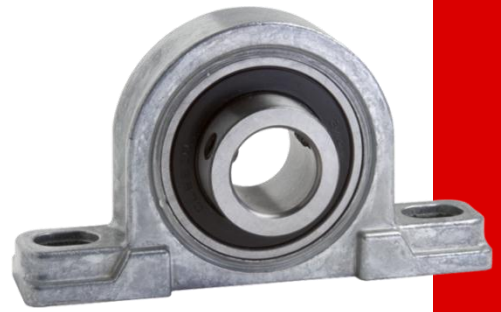


# Mounted Ball Bearing

## Die Cast Housing

*Grainger Item # 4X725*



- Idea for light duty applications
- Well suited for applications requiring strong load support
- Zinc die cast housing is non-corrosive and lightweight
- Ball bearing unit is securely retained inside the housing unit by pressing the lip 360° over the outer race
- Wide inner race locks securely to the shaft with two set screws
- Bearing inserts are pre-lubricated and made to ABEC-1 tolerances.
- Neoprene seal keeps contaminants out and can be used in wet or dry environments
- Tolerates temperature range -30° to 200°F
- Dynamic load capacity (lbs.) is the maximum constant radial load that a bearing can support for one million revolutions @ 33-1/3 RPM for 500 hours
- Static load capacity (lbs.) is the maximum static load (non-rotating shaft) that a bearing can support without causing permanent deformation

Bore Size (in.)	Dynamic Load Capacity (lbs.)	Static Load Capacity (lbs.)	Max Speed Rating*
1/2"	2877	1479	6000 RPM
5/8"	2877	1479	5000 RPM
3/4"	2877	1479	4500 RPM
1"	3153	1768	3500 RPM

\* Maximum speed ratings are based on light loads & reflective bore sizes