

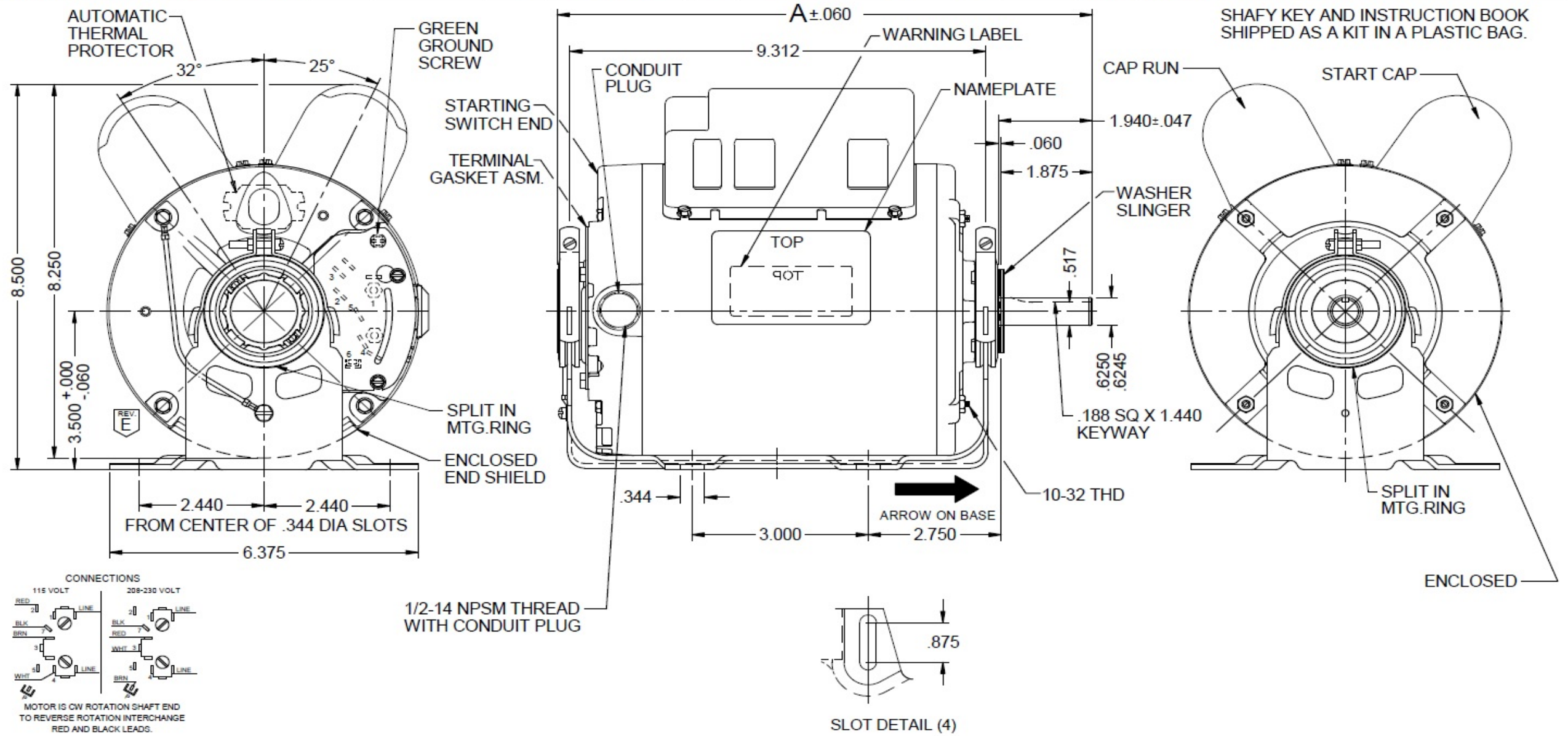
# Dimensional Drawing



**4WNZ5BG**

REV.  
-

| VAR | MODEL         | CUST. PT. NO. | A      | B   | C   | D   | HP  | VOLTS       | SF   | AMPS        | HZ | RPM  | CONN VOLTS | PROT. | DESCRIPTION / REMARKS       |
|-----|---------------|---------------|--------|-----|-----|-----|-----|-------------|------|-------------|----|------|------------|-------|-----------------------------|
| 001 | T63CXCKE-2276 | 4WNZ5BG       | 11.785 | --- | --- | --- | 3/4 | 115/208-230 | 1.30 | 6.1/3.4-3.1 | 60 | 1725 | ---        | AUTO  | 56,TEAO, GREEN BALL BEARING |



|             |             |      |
|-------------|-------------|------|
| DRAWING NO. | PAGE 1 of 1 | REV. |
| 4WNZ5BG     |             | -    |

**Dayton Electric Mfg. Co. Lake Forest, IL 60045 USA**

# Performance Data



**4WNZ5BG**

REV.  
-

## MOTOR PERFORMANCE

|                           |                         |               |            |  |  |  |  |
|---------------------------|-------------------------|---------------|------------|--|--|--|--|
| <b>HP:</b>                | 3/4                     |               |            |  |  |  |  |
| <b>Poles:</b>             | 4                       |               |            |  |  |  |  |
| <b>No. of Speeds:</b>     | 1                       |               |            |  |  |  |  |
| <b>Volts:</b>             | 115/208-230             | <b>115</b>    | <b>230</b> |  |  |  |  |
| <b>HZ:</b>                | 60                      | <b>60</b>     | <b>60</b>  |  |  |  |  |
| <b>Service Factor:</b>    | 1.3                     |               |            |  |  |  |  |
| <b>Efficiency:</b>        | @ Rated Load            | 81.3          | 81.2       |  |  |  |  |
| <b>Power Factor:</b>      | @ Rated Load            | 98.8          | 98.3       |  |  |  |  |
| <b>Amps:</b>              | @ No Load               |               |            |  |  |  |  |
|                           | @ Rated Load            | 6.1           | 3.1        |  |  |  |  |
|                           | @ Service Factor        | 8             | 4          |  |  |  |  |
|                           | @ Locked Rotor          | 51.7          | 26.5       |  |  |  |  |
| <b>RPM:</b>               | @ Rated Load            | 1749          | 1750       |  |  |  |  |
| <b>Ambient (°C):</b>      | 40                      |               |            |  |  |  |  |
| <b>Altitude (FASL):</b>   |                         |               |            |  |  |  |  |
| <b>Torques:</b>           | Breakdown               | 89.1          | 90.5       |  |  |  |  |
|                           | Locked Rotor            | 134.4         | 113.8      |  |  |  |  |
|                           | Pull-Up                 | 115.6         | 97.1       |  |  |  |  |
|                           | Rated Load              | 36.5          | 36.5       |  |  |  |  |
|                           | Service Factor          | 47.3          | 47.3       |  |  |  |  |
| <b>Watts:</b>             | Rated Load              | 697           | 699        |  |  |  |  |
| <b>KVA Code:</b>          | K                       | J             | K          |  |  |  |  |
| <b>Temperature Rise:</b>  | @ Rated Load            | TEAO          | TEAO       |  |  |  |  |
|                           | @ Service Factor        | -             | -          |  |  |  |  |
| <b>Thermal Protector:</b> | Trip Temp (°C)          |               |            |  |  |  |  |
| <b>Winding Material:</b>  | Start (Auxiliary)       | Cu            | Cu         |  |  |  |  |
|                           | Run (Main)              | Cu            | Cu         |  |  |  |  |
| <b>Capacitor(s):</b>      | Start (MFD / Volts)     | 594 mFd, 220V |            |  |  |  |  |
|                           | No. of Start Capacitors |               |            |  |  |  |  |
|                           | Run (MFD / Volts)       | 50 mFd, 370V  |            |  |  |  |  |
|                           | No. of Run Capacitors   |               |            |  |  |  |  |

### LOW SPEED PERFORMANCE DATA:

|                          |                  |  |  |  |  |  |  |
|--------------------------|------------------|--|--|--|--|--|--|
| <b>HP:</b>               |                  |  |  |  |  |  |  |
| <b>Poles:</b>            |                  |  |  |  |  |  |  |
| <b>Volts:</b>            |                  |  |  |  |  |  |  |
| <b>HZ:</b>               |                  |  |  |  |  |  |  |
| <b>Efficiency:</b>       | @ Rated Load     |  |  |  |  |  |  |
| <b>Power Factor:</b>     | @ Rated Load     |  |  |  |  |  |  |
| <b>Amps:</b>             | @ No Load        |  |  |  |  |  |  |
|                          | @ Rated Load     |  |  |  |  |  |  |
|                          | @ Service Factor |  |  |  |  |  |  |
|                          | @ Locked Rotor   |  |  |  |  |  |  |
| <b>Torques:</b>          | Bead Down        |  |  |  |  |  |  |
|                          | Locked Rotor     |  |  |  |  |  |  |
|                          | Pull-Up          |  |  |  |  |  |  |
|                          | Rated Load       |  |  |  |  |  |  |
|                          | Service Factor   |  |  |  |  |  |  |
| <b>Watts:</b>            | @ Rated Load     |  |  |  |  |  |  |
| <b>Temperature Rise:</b> | @ Rated Load     |  |  |  |  |  |  |
|                          | @ Service Factor |  |  |  |  |  |  |

DRAWING NO. PAGE 1 of 1 REV.  
4WNZ5BG -

# Performance Data



**4WNZ5BG**

REV.

-

## Dayton Manufacturing Company

### Motor Description

Model: T063CKE2276 4WNZ5BG  
 Motor ID: 2  
 Poles: 4  
 Volts: 115/208-230  
 Frequency: 60  
 HP: 3/4  
 Speed: 1725  
 Phase: 1  
 Protector: CEJ 66EY

### Test Conditions

Test Type: Start  
 Test Number: 3  
 Poles: 4  
 Volts: 115  
 Hz: 60  
 Rotation:  
 Special Cond: Provide Vcap, Imain & Iaux  
 Speed Conn:  
 TestBoard: Aamps Performance Fixture #1  
 Run Cap: 50  
 Start Cap: 594µfd  
 Environment:  
 Tested: 4/2/2014 12:01:46 PM  
 Tested By: Sharp, Gerald  
 Gear Ratio: 1:1  
 Bearing Friction: -0.19 Oz-Ft  
 Windage Torque: -1.15 Oz-Ft

| Special Points   | Vline (V)    | Vaux (V)     | Vcap (V)     | Iline (A)    | Imain (A)    | Iaux (A)     | Watts       | RPM        | Tq (Oz-ft)   | HP           | Eff (%)    | PF (%)      | Cap          |
|------------------|--------------|--------------|--------------|--------------|--------------|--------------|-------------|------------|--------------|--------------|------------|-------------|--------------|
|                  | 115.0        | 112.0        | 147.2        | 51.72        | 39.33        | 33.77        | 5904        | 11         | 134.4        | 0.018        | 0.2        | 99.3        | 608.5        |
|                  | 115.0        | 111.9        | 146.9        | 51.67        | 39.17        | 33.70        | 5900        | 32         | 138.6        | 0.054        | 0.7        | 99.3        | 608.6        |
| <b>PUT OZ-FT</b> | <b>115.0</b> | <b>110.7</b> | <b>145.6</b> | <b>51.55</b> | <b>38.66</b> | <b>33.36</b> | <b>5884</b> | <b>158</b> | <b>115.6</b> | <b>0.217</b> | <b>2.8</b> | <b>99.3</b> | <b>607.9</b> |
|                  | 115.0        | 110.7        | 145.6        | 51.55        | 38.66        | 33.36        | 5884        | 158        | 115.6        | 0.217        | 2.8        | 99.3        | 607.9        |
|                  | 115.0        | 109.2        | 143.4        | 51.53        | 37.96        | 32.79        | 5890        | 282        | 136.7        | 0.459        | 5.8        | 99.4        | 606.7        |
|                  | 115.0        | 107.7        | 141.2        | 51.50        | 37.27        | 32.25        | 5887        | 396        | 144.5        | 0.681        | 8.6        | 99.4        | 605.8        |
|                  | 115.0        | 106.5        | 139.2        | 51.80        | 36.71        | 31.74        | 5927        | 504        | 153.5        | 0.921        | 11.6       | 99.5        | 604.8        |
|                  | 115.0        | 106.2        | 138.6        | 52.73        | 36.18        | 31.55        | 6038        | 604        | 164.3        | 1.182        | 14.6       | 99.6        | 604.0        |
|                  | 115.0        | 106.6        | 138.8        | 53.17        | 35.16        | 31.68        | 6114        | 698        | 169.9        | 1.412        | 17.2       | 100.0       | 605.3        |
|                  | 115.0        | 104.7        | 136.5        | 52.65        | 34.04        | 31.05        | 6054        | 785        | 176.6        | 1.651        | 20.3       | 100.0       | 603.2        |
|                  | 115.0        | 103.4        | 134.3        | 52.54        | 33.10        | 30.53        | 6047        | 866        | 183.8        | 1.894        | 23.4       | 100.1       | 603.0        |
|                  | 115.0        | 102.1        | 132.5        | 52.58        | 32.17        | 30.09        | 6057        | 943        | 190.5        | 2.138        | 26.3       | 100.2       | 602.4        |
|                  | 115.0        | 101.1        | 131.0        | 52.68        | 31.24        | 29.70        | 6072        | 1015       | 195.7        | 2.364        | 29.0       | 100.2       | 601.5        |
|                  | 115.0        | 100.4        | 129.7        | 52.82        | 30.33        | 29.38        | 6092        | 1081       | 200.7        | 2.582        | 31.6       | 100.3       | 600.6        |
|                  | 115.0        | 100.0        | 128.6        | 53.02        | 29.47        | 29.14        | 6120        | 1143       | 204.1        | 2.776        | 33.8       | 100.4       | 600.9        |
|                  | 115.0        | 99.7         | 127.9        | 53.25        | 28.63        | 28.96        | 6141        | 1201       | 205.9        | 2.943        | 35.7       | 100.3       | 600.5        |
|                  | 115.0        | 99.7         | 127.5        | 53.46        | 27.86        | 28.85        | 6169        | 1254       | 206.8        | 3.089        | 37.4       | 100.3       | 600.3        |
|                  | 115.0        | 99.8         | 127.3        | 53.76        | 27.20        | 28.81        | 6198        | 1303       | 206.3        | 3.201        | 38.5       | 100.3       | 600.5        |
|                  | 115.0        | 100.5        | 127.7        | 54.09        | 26.63        | 28.90        | 6239        | 1349       | 204.2        | 3.279        | 39.2       | 100.3       | 600.6        |
|                  | 115.0        | 101.8        | 128.5        | 54.50        | 26.14        | 29.14        | 6290        | 1392       | 200.1        | 3.316        | 39.3       | 100.4       | 601.8        |
|                  | 115.0        | 103.2        | 129.8        | 54.92        | 25.76        | 29.49        | 6336        | 1431       | 195.6        | 3.332        | 39.2       | 100.3       | 602.6        |
|                  | 115.0        | 105.0        | 131.7        | 55.39        | 25.47        | 29.98        | 6385        | 1467       | 188.7        | 3.295        | 38.5       | 100.2       | 603.7        |
|                  | 115.0        | 107.1        | 134.0        | 55.79        | 25.25        | 30.58        | 6430        | 1500       | 180.1        | 3.215        | 37.3       | 100.2       | 605.2        |
|                  | 115.0        | 109.7        | 137.0        | 56.20        | 25.05        | 31.34        | 6474        | 1531       | 169.5        | 3.088        | 35.6       | 100.2       | 606.9        |
|                  | 115.0        | 112.4        | 140.2        | 56.54        | 24.87        | 32.23        | 6520        | 1559       | 158.6        | 2.942        | 33.7       | 100.3       | 609.8        |
|                  | 115.0        | 115.6        | 143.9        | 56.87        | 24.74        | 33.24        | 6556        | 1584       | 145.2        | 2.739        | 31.2       | 100.3       | 612.8        |
|                  | 115.0        | 118.7        | 147.7        | 57.11        | 24.61        | 34.31        | 6586        | 1608       | 128.5        | 2.461        | 27.9       | 100.3       | 616.1        |
|                  | 115.0        | 122.0        | 151.7        | 57.28        | 24.47        | 35.44        | 6600        | 1631       | 112.5        | 2.185        | 24.7       | 100.2       | 619.9        |
|                  | 115.0        | 125.3        | 155.7        | 57.41        | 24.36        | 36.64        | 6616        | 1652       | 93.7         | 1.843        | 20.8       | 100.2       | 624.4        |
|                  | 115.0        | 128.5        | 159.6        | 57.47        | 24.27        | 37.85        | 6619        | 1671       | 75.5         | 1.502        | 16.9       | 100.1       | 629.0        |
|                  | 115.0        | 131.6        | 163.4        | 57.45        | 24.19        | 39.03        | 6611        | 1689       | 54.8         | 1.102        | 12.4       | 100.1       | 633.7        |
|                  | 115.0        | 136.9        | 167.8        | 57.27        | 23.99        | 40.46        | 6588        | 1709       | 31.0         | 0.631        | 7.1        | 100.0       | 639.5        |
|                  | 115.0        | 138.6        | 171.1        | 57.08        | 23.93        | 41.64        | 6563        | 1725       | 10.3         | 0.212        | 2.4        | 100.0       | 645.4        |
|                  | 115.0        | 139.7        | 172.7        | 56.95        | 23.83        | 42.21        | 6540        | 1733       | 0.0          | 0.000        | 0.0        | 99.9        | 648.3        |

DRAWING NO. PAGE 1 of 2 REV.  
**4WNZ5BG** -

**Dayton Electric Mfg. Co. Lake Forest, IL 60045 USA**

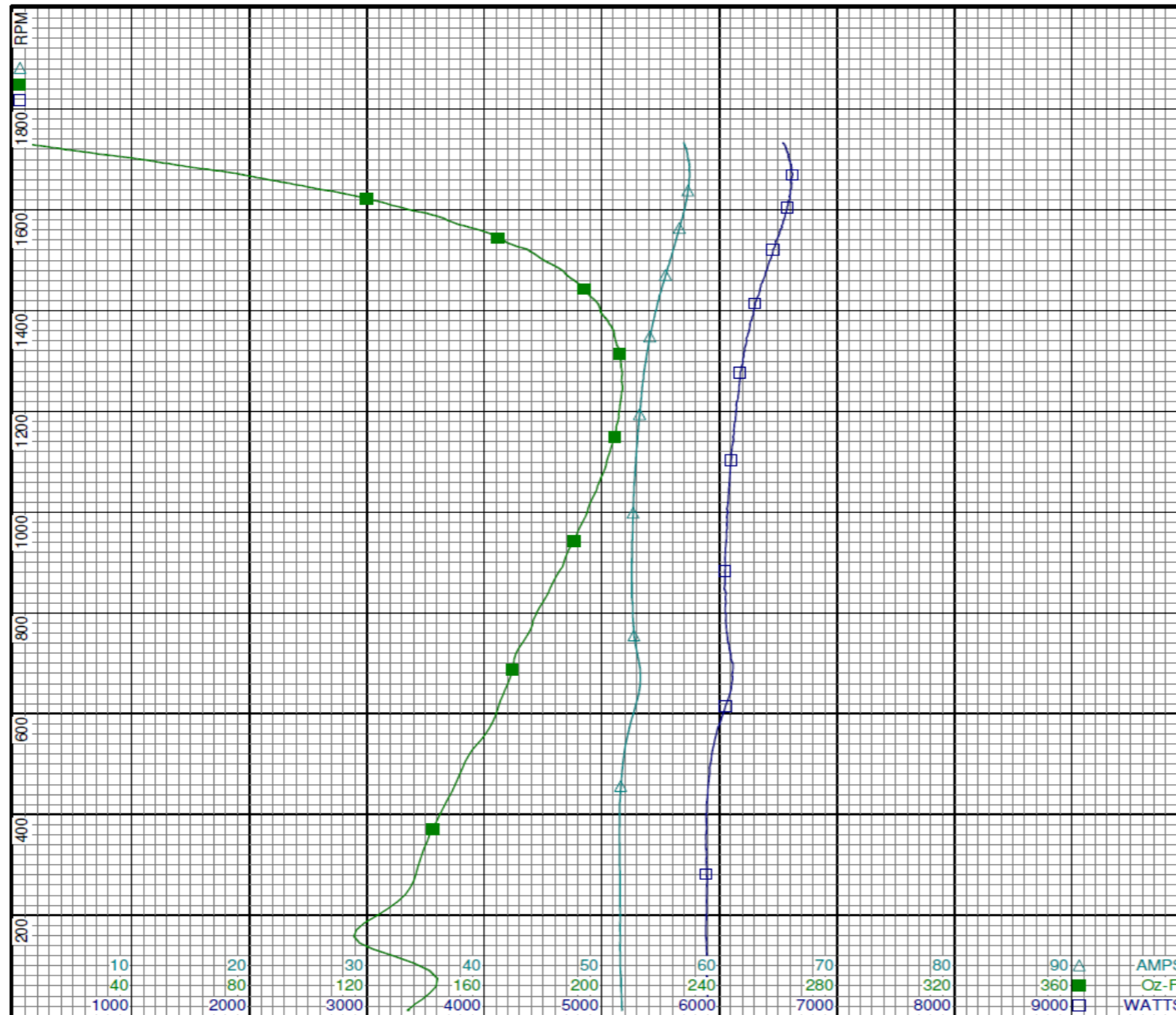
# Performance Data



4WNZ5BG

REV.

-



**Curve Descriptions:**

Motor(1) Test 3 Start 115V 60 Hz 4P  
Provide Vcap, I<sub>main</sub> & I<sub>aux</sub>

- SPEED vs WATTS
- SPEED vs TORQUE
- △ SPEED vs ILine

**Motor Ratings:**

(1) T063CKE2276 4WNZ5BG

|             |             |      |
|-------------|-------------|------|
| DRAWING NO. | PAGE 2 of 2 | REV. |
| 4WNZ5BG     |             | -    |

Dayton Electric Mfg. Co. Lake Forest, IL 60045 USA

# Performance Data



**4WNZ5BG**

REV.

-

## Dayton Manufacturing Company

### Motor Description

Model: T063CKE2276 4WNZ5BG  
 Motor ID: 2  
 Poles: 4  
 Volts: 115/208-230  
 Frequency: 60  
 HP: 3/4  
 Speed: 1725  
 Phase: 1  
 Protector: CEJ 66EY

### Test Conditions

Test Type: Run  
 Test Number: 7  
 Poles: 4  
 Volts: 115  
 Hz: 60  
 Rotation:  
 Special Cond: Provide cap volts, IM & Iaux  
 Speed Conn:  
 TestBoard: Amtps Performance Fixture #1  
 Run Cap: 50  
 Start Cap: 594 ufd  
 Environment:  
 Tested: 4/2/2014 12:00:32 PM  
 Tested By: Sharp, Gerald  
 Gear Ratio: 1:1  
 Bearing Friction: -0.32 Oz-Ft  
 Windage Torque: -1.17 Oz-Ft

| Special Points    | Vline (V)    | Vaux (V)     | Vcap (V)     | Iline (A)    | Imain (A)    | Iaux (A)     | Watts       | RPM         | Tq (Oz-ft)   | HP           | Eff (%)     | PF (%)      | Cap         |
|-------------------|--------------|--------------|--------------|--------------|--------------|--------------|-------------|-------------|--------------|--------------|-------------|-------------|-------------|
|                   | 115.0        | 133.9        | 175.0        | 1.22         | 3.44         | 3.432        | 88          | 1795        | 0.00         | 0.000        | 0.0         | 62.3        | 52.0        |
|                   | 115.0        | 128.4        | 167.8        | 2.74         | 2.86         | 3.273        | 302         | 1777        | 12.94        | 0.274        | 67.6        | 95.7        | 51.7        |
|                   | 115.0        | 120.4        | 157.7        | 5.21         | 4.37         | 3.000        | 591         | 1758        | 30.52        | 0.639        | 80.6        | 98.6        | 50.5        |
| <b>0.75 HP</b>    | <b>115.0</b> | <b>118.2</b> | <b>154.9</b> | <b>6.06</b>  | <b>5.17</b>  | <b>2.944</b> | <b>688</b>  | <b>1750</b> | <b>36.01</b> | <b>0.750</b> | <b>81.3</b> | <b>98.8</b> | <b>50.4</b> |
| <b>36.5 OZ-FT</b> | <b>115.0</b> | <b>118.0</b> | <b>154.7</b> | <b>6.13</b>  | <b>5.24</b>  | <b>2.939</b> | <b>697</b>  | <b>1749</b> | <b>36.50</b> | <b>0.760</b> | <b>81.3</b> | <b>98.8</b> | <b>50.4</b> |
| <b>42 OZ-FT</b>   | <b>115.0</b> | <b>116.0</b> | <b>152.0</b> | <b>7.04</b>  | <b>6.10</b>  | <b>2.887</b> | <b>797</b>  | <b>1740</b> | <b>42.00</b> | <b>0.870</b> | <b>81.4</b> | <b>98.5</b> | <b>50.4</b> |
|                   | 115.0        | 115.8        | 151.7        | 7.13         | 6.19         | 2.882        | 806         | 1740        | 42.48        | 0.880        | 81.4        | 98.3        | 50.4        |
| <b>45.6 OZ-FT</b> | <b>115.0</b> | <b>114.5</b> | <b>150.1</b> | <b>7.66</b>  | <b>6.73</b>  | <b>2.852</b> | <b>866</b>  | <b>1734</b> | <b>45.60</b> | <b>0.941</b> | <b>81.1</b> | <b>98.3</b> | <b>50.4</b> |
| <b>0.975 HP</b>   | <b>115.0</b> | <b>113.8</b> | <b>149.3</b> | <b>7.97</b>  | <b>7.04</b>  | <b>2.835</b> | <b>900</b>  | <b>1731</b> | <b>47.32</b> | <b>0.975</b> | <b>80.8</b> | <b>98.2</b> | <b>50.4</b> |
| <b>1725 RPM</b>   | <b>115.0</b> | <b>112.5</b> | <b>147.9</b> | <b>8.44</b>  | <b>7.52</b>  | <b>2.810</b> | <b>951</b>  | <b>1725</b> | <b>49.98</b> | <b>1.026</b> | <b>80.5</b> | <b>98.0</b> | <b>50.4</b> |
|                   | 115.0        | 111.4        | 146.3        | 9.01         | 8.09         | 2.780        | 1014        | 1719        | 53.08        | 1.086        | 79.9        | 97.9        | 50.4        |
|                   | 115.0        | 107.2        | 141.0        | 10.92        | 10.10        | 2.683        | 1216        | 1698        | 62.22        | 1.257        | 77.1        | 96.8        | 50.5        |
|                   | 115.0        | 103.1        | 136.0        | 12.81        | 12.09        | 2.599        | 1414        | 1675        | 70.24        | 1.401        | 73.9        | 96.0        | 50.7        |
|                   | 115.0        | 99.5         | 131.3        | 14.64        | 14.05        | 2.515        | 1601        | 1650        | 76.40        | 1.501        | 69.9        | 95.1        | 50.8        |
|                   | 115.0        | 95.8         | 126.9        | 16.44        | 15.98        | 2.433        | 1776        | 1624        | 81.87        | 1.583        | 66.5        | 93.9        | 50.9        |
|                   | 115.0        | 92.6         | 122.8        | 18.22        | 17.91        | 2.357        | 1941        | 1596        | 85.39        | 1.622        | 62.4        | 92.6        | 50.9        |
|                   | 115.0        | 89.6         | 119.4        | 19.94        | 19.78        | 2.294        | 2095        | 1565        | 87.31        | 1.627        | 57.9        | 91.3        | 51.0        |
|                   | 115.0        | 86.9         | 116.1        | 21.65        | 21.62        | 2.234        | 2239        | 1532        | 88.79        | 1.619        | 53.9        | 89.9        | 51.0        |
| <b>BDT OZ-FT</b>  | <b>115.0</b> | <b>84.6</b>  | <b>113.4</b> | <b>23.29</b> | <b>23.41</b> | <b>2.182</b> | <b>2371</b> | <b>1496</b> | <b>89.08</b> | <b>1.586</b> | <b>49.9</b> | <b>88.5</b> | <b>51.0</b> |
|                   | 115.0        | 84.6         | 113.4        | 23.29        | 23.41        | 2.182        | 2371        | 1496        | 89.08        | 1.586        | 49.9        | 88.5        | 51.0        |
|                   | 115.0        | 82.7         | 111.1        | 25.04        | 25.09        | 2.137        | 2487        | 1456        | 87.11        | 1.510        | 45.3        | 86.4        | 51.0        |
|                   | 115.0        | 81.0         | 109.3        | 26.54        | 26.71        | 2.103        | 2590        | 1414        | 84.72        | 1.426        | 41.1        | 84.9        | 51.0        |
|                   | 115.0        | 79.7         | 107.9        | 27.97        | 28.26        | 2.077        | 2682        | 1367        | 81.06        | 1.320        | 36.7        | 83.4        | 51.1        |
|                   | 115.0        | 79.0         | 107.0        | 29.32        | 29.73        | 2.060        | 2763        | 1317        | 77.11        | 1.209        | 32.6        | 81.9        | 51.0        |
|                   | 115.0        | 78.4         | 106.6        | 30.57        | 31.09        | 2.046        | 2829        | 1262        | 72.12        | 1.084        | 28.6        | 80.5        | 50.9        |
|                   | 115.0        | 78.0         | 106.4        | 31.75        | 32.38        | 2.043        | 2887        | 1203        | 66.30        | 0.949        | 24.5        | 79.1        | 50.9        |
|                   | 115.0        | 78.0         | 106.5        | 32.83        | 33.56        | 2.045        | 2934        | 1139        | 59.96        | 0.813        | 20.7        | 77.7        | 50.9        |
|                   | 115.0        | 78.3         | 106.8        | 33.82        | 34.64        | 2.053        | 2974        | 1070        | 53.23        | 0.678        | 17.0        | 76.4        | 51.0        |
|                   | 115.0        | 78.9         | 107.4        | 34.70        | 35.62        | 2.063        | 3001        | 996         | 45.82        | 0.543        | 13.5        | 75.2        | 50.9        |
|                   | 115.0        | 79.0         | 108.1        | 35.51        | 36.52        | 2.071        | 3018        | 914         | 37.86        | 0.412        | 10.2        | 73.9        | 50.8        |
|                   | 115.0        | 79.0         | 108.4        | 36.26        | 37.33        | 2.075        | 3031        | 828         | 29.17        | 0.288        | 7.1         | 72.7        | 50.8        |
|                   | 115.0        | 79.0         | 108.3        | 36.88        | 38.03        | 2.065        | 3026        | 735         | 18.20        | 0.159        | 3.9         | 71.4        | 50.6        |
|                   | 115.0        | 78.1         | 107.5        | 37.15        | 38.39        | 2.044        | 2978        | 636         | 8.09         | 0.061        | 1.5         | 69.7        | 50.4        |
|                   | 115.0        | 82.4         | 112.8        | 36.71        | 38.06        | 2.157        | 2963        | 534         | 19.97        | 0.127        | 3.2         | 70.2        | 50.7        |
|                   | 115.0        | 85.3         | 116.4        | 37.37        | 38.75        | 2.225        | 3029        | 421         | 14.01        | 0.070        | 1.7         | 70.5        | 50.7        |
|                   | 115.0        | 85.7         | 117.1        | 37.67        | 39.08        | 2.230        | 3040        | 301         | 10.64        | 0.038        | 0.9         | 70.2        | 50.5        |
|                   | 115.0        | 87.6         | 119.4        | 37.93        | 39.41        | 2.289        | 3047        | 172         | -5.16        | -0.011       | 0.0         | 69.8        | 50.8        |

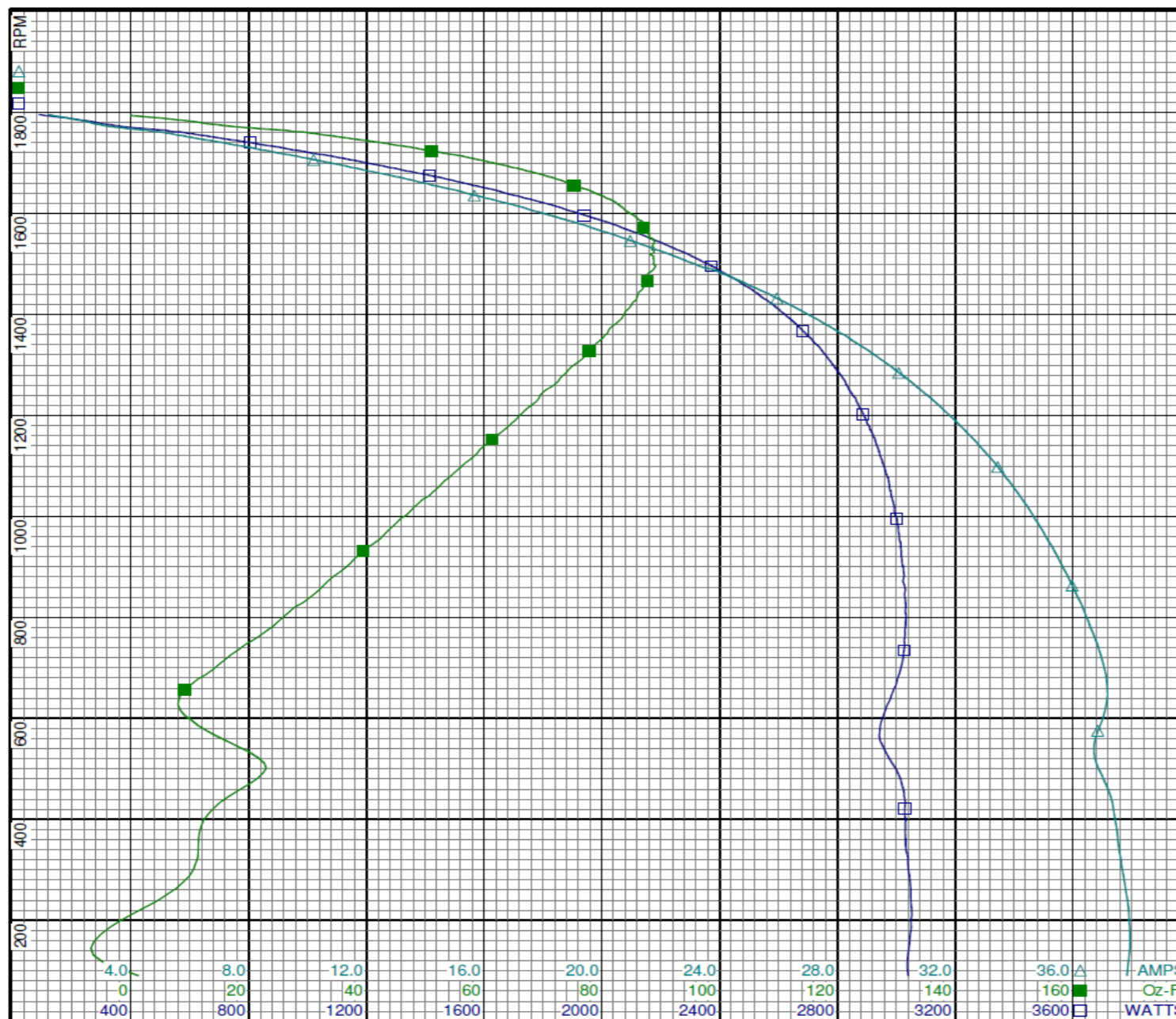
# Performance Data



4WNZ5BG

REV.

-



**Curve Descriptions:**

Motor(1) Test 7 Run 115V 60 Hz 4P  
Provide cap volts, IM & laux

- SPEED vs WATTS
- SPEED vs TORQUE
- △ SPEED vs ILine

**Motor Ratings:**

(1) T063CKE2276 4WNZ5BG

|             |             |      |
|-------------|-------------|------|
| DRAWING NO. | PAGE 2 of 2 | REV. |
| 4WNZ5BG     |             | -    |

Dayton Electric Mfg. Co. Lake Forest, IL 60045 USA

# Performance Data



**4WNZ5BG**

REV.

-

## Dayton Manufacturing Company

### Motor Description

Model: T063CKE2276 4WNZ5BG  
 Motor ID: 2  
 Poles: 4  
 Volts: 115/208-230  
 Frequency: 60  
 HP: 3/4  
 Speed: 1725  
 Phase: 1  
 Protector: CEJ 66EY

### Test Conditions

Test Type: Start  
 Test Number: 5  
 Poles: 4  
 Volts: 230  
 Hz: 60  
 Rotation:  
 Special Cond: Provide Vcap, I main & I aux  
 Speed Conn:  
 TestBoard: Amps Performance Fixture #1  
 Run Cap: 50  
 Start Cap: 594 ufd  
 Environment:  
 Tested: 4/2/2014 1:38:57 PM  
 Tested By: Sharp, Gerald  
 Gear Ratio: 1:1  
 Bearing Friction: -0.26 Oz-Ft  
 Windage Torque: -1.15 Oz-Ft

| Special Points   | Vline (V)    | Vaux (V)    | Vcap (V)     | Iline (A)    | Imain (A)    | Iaux (A)     | Watts       | RPM        | Tq (Oz-ft)   | HP           | Eff (%)    | PF (%)      | Cap          |
|------------------|--------------|-------------|--------------|--------------|--------------|--------------|-------------|------------|--------------|--------------|------------|-------------|--------------|
|                  | 230.0        | 94.5        | 125.8        | 26.47        | 22.99        | 28.48        | 5795        | 10         | 113.75       | 0.014        | 0.2        | 95.2        | 600.6        |
|                  | 230.0        | 94.3        | 125.5        | 26.44        | 22.82        | 28.39        | 5792        | 43         | 121.76       | 0.063        | 0.8        | 95.2        | 600.0        |
| <b>PUT OZ-FT</b> | <b>230.0</b> | <b>93.6</b> | <b>124.2</b> | <b>26.35</b> | <b>22.40</b> | <b>28.08</b> | <b>5774</b> | <b>158</b> | <b>97.10</b> | <b>0.182</b> | <b>2.4</b> | <b>95.3</b> | <b>599.5</b> |
|                  | 230.0        | 93.1        | 123.8        | 26.36        | 22.24        | 27.95        | 5773        | 184        | 100.60       | 0.221        | 2.9        | 95.2        | 598.9        |
|                  | 230.0        | 91.9        | 121.9        | 26.30        | 21.36        | 27.47        | 5773        | 321        | 118.48       | 0.452        | 5.8        | 95.4        | 597.9        |
|                  | 230.0        | 90.7        | 119.8        | 26.24        | 20.53        | 26.95        | 5761        | 445        | 126.42       | 0.670        | 8.7        | 95.5        | 596.8        |
|                  | 230.0        | 89.6        | 117.6        | 26.32        | 19.53        | 26.44        | 5788        | 559        | 135.96       | 0.905        | 11.7       | 95.6        | 596.2        |
|                  | 230.0        | 90.0        | 117.2        | 26.72        | 18.35        | 26.35        | 5895        | 667        | 143.95       | 1.143        | 14.5       | 95.9        | 596.4        |
|                  | 230.0        | 89.6        | 116.4        | 26.64        | 17.21        | 26.16        | 5912        | 766        | 152.05       | 1.386        | 17.5       | 96.5        | 595.9        |
|                  | 230.0        | 88.7        | 114.8        | 26.51        | 16.02        | 25.74        | 5892        | 858        | 158.54       | 1.620        | 20.5       | 96.6        | 594.8        |
|                  | 230.0        | 88.2        | 113.3        | 26.43        | 14.77        | 25.41        | 5896        | 942        | 164.85       | 1.848        | 23.4       | 97.0        | 595.0        |
|                  | 230.0        | 87.7        | 112.0        | 26.38        | 13.43        | 25.10        | 5897        | 1022       | 169.98       | 2.068        | 26.2       | 97.2        | 594.3        |
|                  | 230.0        | 87.7        | 111.0        | 26.32        | 12.03        | 24.88        | 5909        | 1095       | 174.41       | 2.274        | 28.7       | 97.6        | 594.8        |
|                  | 230.0        | 87.8        | 110.2        | 26.26        | 10.59        | 24.71        | 5912        | 1162       | 177.43       | 2.455        | 31.0       | 97.9        | 594.7        |
|                  | 230.0        | 88.1        | 109.8        | 26.21        | 9.10         | 24.60        | 5904        | 1224       | 178.48       | 2.601        | 32.9       | 97.9        | 594.3        |
|                  | 230.0        | 88.7        | 109.5        | 26.14        | 7.59         | 24.56        | 5907        | 1282       | 178.62       | 2.725        | 34.4       | 98.3        | 594.8        |
|                  | 230.0        | 89.4        | 109.8        | 26.08        | 6.04         | 24.58        | 5893        | 1335       | 176.82       | 2.810        | 35.6       | 98.2        | 593.7        |
|                  | 230.0        | 90.7        | 110.4        | 26.05        | 4.47         | 24.75        | 5901        | 1382       | 174.24       | 2.867        | 36.2       | 98.5        | 594.8        |
|                  | 230.0        | 92.3        | 111.5        | 26.02        | 2.89         | 25.04        | 5905        | 1426       | 169.52       | 2.879        | 36.4       | 98.7        | 595.5        |
|                  | 230.0        | 94.2        | 113.1        | 26.00        | 1.48         | 25.41        | 5906        | 1466       | 163.15       | 2.848        | 36.0       | 98.8        | 596.2        |
|                  | 230.0        | 96.3        | 115.1        | 25.97        | 1.21         | 25.93        | 5910        | 1504       | 155.40       | 2.782        | 35.1       | 98.9        | 597.6        |
|                  | 230.0        | 99.0        | 117.6        | 25.94        | 2.47         | 26.57        | 5915        | 1537       | 145.82       | 2.668        | 33.7       | 99.2        | 599.1        |
|                  | 230.0        | 101.7       | 120.6        | 25.88        | 3.99         | 27.30        | 5908        | 1568       | 134.39       | 2.508        | 31.7       | 99.3        | 600.4        |
|                  | 230.0        | 104.7       | 123.8        | 25.81        | 5.54         | 28.16        | 5908        | 1596       | 122.59       | 2.329        | 29.4       | 99.5        | 603.4        |
|                  | 230.0        | 107.9       | 127.3        | 25.73        | 7.11         | 29.11        | 5896        | 1623       | 107.68       | 2.080        | 26.3       | 99.6        | 606.3        |
|                  | 230.0        | 111.0       | 131.1        | 25.63        | 8.62         | 30.07        | 5877        | 1646       | 91.80        | 1.799        | 22.8       | 99.7        | 608.6        |
|                  | 230.0        | 114.2       | 135.0        | 25.50        | 10.18        | 31.14        | 5849        | 1668       | 75.39        | 1.497        | 19.1       | 99.7        | 611.9        |
|                  | 230.0        | 117.4       | 138.8        | 25.32        | 11.62        | 32.21        | 5815        | 1688       | 57.02        | 1.146        | 14.7       | 99.9        | 615.5        |
|                  | 230.0        | 120.7       | 143.0        | 25.09        | 13.16        | 33.38        | 5762        | 1710       | 36.57        | 0.744        | 9.6        | 99.9        | 619.1        |
|                  | 230.0        | 123.8       | 146.8        | 24.88        | 14.61        | 34.48        | 5719        | 1728       | 17.03        | 0.350        | 4.6        | 100.0       | 622.9        |
|                  | 230.0        | 126.2       | 150.0        | 24.64        | 15.80        | 35.43        | 5658        | 1743       | 0.00         | 0.000        | 0.0        | 99.8        | 626.6        |

DRAWING NO. PAGE 1 of 2 REV.  
 4WNZ5BG -

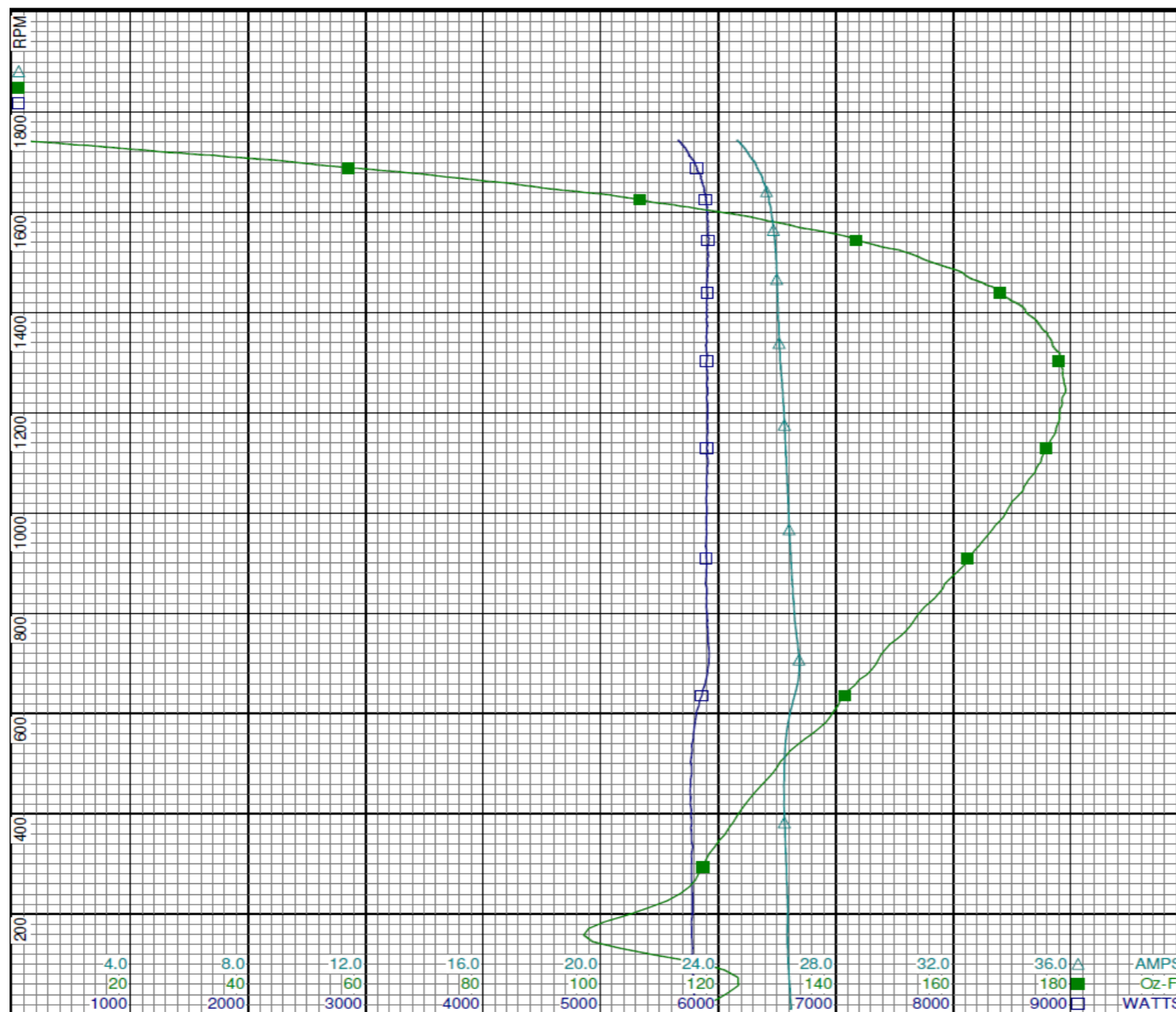
# Performance Data



4WNZ5BG

REV.

-



**Curve Descriptions:**

Motor(1) Test 5 Start 230V 60 Hz 4P  
Provide Vcap, I main & I aux

- SPEED vs WATTS
- SPEED vs TORQUE
- △ SPEED vs ILine

**Motor Ratings:**

(1) T063CKE2276 4WNZ5BG

|             |             |      |
|-------------|-------------|------|
| DRAWING NO. | PAGE 2 of 2 | REV. |
| 4WNZ5BG     |             | -    |

Dayton Electric Mfg. Co. Lake Forest, IL 60045 USA



# Performance Data



**4WNZ5BG**

REV.

-

## Dayton Manufacturing Company

### Motor Description

Model: T063CKE2276 4WNZ5BG  
 Motor ID: 2  
 Poles: 4  
 Volts: 115/208-230  
 Frequency: 60  
 HP: 3/4  
 Speed: 1725  
 Phase: 1  
 Protector: CEJ 66EY

### Test Conditions

Test Type: Run Run Cap: 50  
 Test Number: 8 Start Cap: 594 ufd  
 Poles: 4 Environment:  
 Volts: 230 Tested: 4/2/2014 1:15:23 PM  
 Hz: 60 Tested By: Sharp, Gerald  
 Rotation: Gear Ratio: 1:1  
 Special Cond: Provide cap volts, Imain & Iau Bearing Friction: -0.27 Oz-Ft  
 Speed Conn: Windage Torque: -1.15 Oz-Ft  
 TestBoard: Amtps Performance Fixture #1

| Special Points    | Vline(V)     | Vaux(V)      | Vcap(V)      | Iline(A)      | Imain(A)     | Iaux(A)      | Watts       | RPM         | Tq(Oz-ft)    | HP           | Eff(%)      | PF(%)       | Cap         |
|-------------------|--------------|--------------|--------------|---------------|--------------|--------------|-------------|-------------|--------------|--------------|-------------|-------------|-------------|
|                   | 230.0        | 130.3        | 174.5        | 0.616         | 3.36         | 3.406        | 92          | 1795        | 0.00         | 0.000        | 0.0         | 64.9        | 51.8        |
|                   | 230.0        | 125.3        | 167.5        | 1.384         | 2.73         | 3.255        | 307         | 1778        | 12.68        | 0.268        | 65.1        | 96.6        | 51.5        |
|                   | 230.0        | 117.5        | 157.7        | 2.627         | 2.64         | 2.998        | 594         | 1759        | 30.49        | 0.638        | 80.2        | 98.2        | 50.4        |
| <b>36.5 OZ-FT</b> | <b>230.0</b> | <b>115.2</b> | <b>154.9</b> | <b>3.091</b>  | <b>2.89</b>  | <b>2.939</b> | <b>699</b>  | <b>1750</b> | <b>36.50</b> | <b>0.760</b> | <b>81.2</b> | <b>98.3</b> | <b>50.3</b> |
| <b>0.75 HP</b>    | <b>230.0</b> | <b>115.4</b> | <b>155.2</b> | <b>3.053</b>  | <b>2.87</b>  | <b>2.944</b> | <b>690</b>  | <b>1750</b> | <b>36.00</b> | <b>0.750</b> | <b>81.1</b> | <b>98.3</b> | <b>50.3</b> |
| <b>42 OZ-FT</b>   | <b>230.0</b> | <b>113.2</b> | <b>152.3</b> | <b>3.543</b>  | <b>3.18</b>  | <b>2.890</b> | <b>799</b>  | <b>1740</b> | <b>42.00</b> | <b>0.870</b> | <b>81.3</b> | <b>98.0</b> | <b>50.3</b> |
|                   | 230.0        | 112.9        | 152.1        | 3.595         | 3.22         | 2.884        | 809         | 1739        | 42.58        | 0.882        | 81.3        | 97.9        | 50.3        |
| <b>45.6 OZ-FT</b> | <b>230.0</b> | <b>111.7</b> | <b>150.6</b> | <b>3.856</b>  | <b>3.42</b>  | <b>2.856</b> | <b>869</b>  | <b>1734</b> | <b>45.60</b> | <b>0.941</b> | <b>80.8</b> | <b>97.9</b> | <b>50.3</b> |
| <b>0.975 HP</b>   | <b>230.0</b> | <b>111.1</b> | <b>149.7</b> | <b>4.000</b>  | <b>3.53</b>  | <b>2.841</b> | <b>900</b>  | <b>1730</b> | <b>47.33</b> | <b>0.975</b> | <b>80.8</b> | <b>97.8</b> | <b>50.3</b> |
| <b>1725 RPM</b>   | <b>230.0</b> | <b>109.9</b> | <b>148.4</b> | <b>4.245</b>  | <b>3.74</b>  | <b>2.816</b> | <b>953</b>  | <b>1725</b> | <b>50.13</b> | <b>1.029</b> | <b>80.6</b> | <b>97.6</b> | <b>50.3</b> |
|                   | 230.0        | 108.8        | 146.8        | 4.540         | 3.99         | 2.788        | 1018        | 1719        | 53.21        | 1.089        | 79.8        | 97.5        | 50.4        |
|                   | 230.0        | 104.7        | 141.8        | 5.485         | 4.90         | 2.698        | 1218        | 1698        | 62.43        | 1.262        | 77.3        | 96.6        | 50.5        |
|                   | 230.0        | 100.8        | 136.9        | 6.445         | 5.88         | 2.613        | 1420        | 1675        | 70.73        | 1.410        | 74.1        | 95.8        | 50.6        |
|                   | 230.0        | 97.1         | 132.3        | 7.377         | 6.88         | 2.532        | 1611        | 1650        | 77.57        | 1.524        | 70.6        | 94.9        | 50.8        |
|                   | 230.0        | 93.4         | 128.0        | 8.283         | 7.87         | 2.453        | 1783        | 1625        | 82.80        | 1.601        | 67.0        | 93.6        | 50.8        |
|                   | 230.0        | 89.9         | 124.0        | 9.167         | 8.87         | 2.378        | 1947        | 1597        | 85.89        | 1.633        | 62.6        | 92.3        | 50.9        |
|                   | 230.0        | 86.7         | 120.2        | 10.050        | 9.86         | 2.311        | 2105        | 1565        | 89.00        | 1.658        | 58.8        | 91.1        | 51.0        |
|                   | 230.0        | 83.7         | 116.9        | 10.908        | 10.84        | 2.247        | 2249        | 1532        | 89.77        | 1.637        | 54.3        | 89.7        | 51.0        |
| <b>BDT OZ-FT</b>  | <b>230.0</b> | <b>82.9</b>  | <b>115.9</b> | <b>11.153</b> | <b>11.12</b> | <b>2.231</b> | <b>2290</b> | <b>1522</b> | <b>90.51</b> | <b>1.640</b> | <b>53.4</b> | <b>89.3</b> | <b>51.1</b> |
|                   | 230.0        | 81.0         | 113.9        | 11.821        | 11.78        | 2.192        | 2387        | 1496        | 89.68        | 1.597        | 49.9        | 87.8        | 51.0        |
|                   | 230.0        | 78.7         | 111.4        | 12.622        | 12.70        | 2.144        | 2505        | 1456        | 88.34        | 1.531        | 45.6        | 86.3        | 51.0        |
|                   | 230.0        | 76.8         | 109.2        | 13.389        | 13.58        | 2.105        | 2615        | 1413        | 86.53        | 1.456        | 41.5        | 84.9        | 51.1        |
|                   | 230.0        | 75.1         | 107.7        | 14.106        | 14.41        | 2.072        | 2707        | 1367        | 82.95        | 1.350        | 37.2        | 83.4        | 51.0        |
|                   | 230.0        | 73.5         | 106.6        | 14.786        | 15.20        | 2.047        | 2781        | 1317        | 78.46        | 1.231        | 33.0        | 81.8        | 50.9        |
|                   | 230.0        | 72.8         | 105.8        | 15.429        | 15.95        | 2.033        | 2850        | 1262        | 73.32        | 1.102        | 28.8        | 80.3        | 51.0        |
|                   | 230.0        | 72.0         | 105.5        | 16.022        | 16.65        | 2.023        | 2905        | 1203        | 67.73        | 0.970        | 24.9        | 78.8        | 50.9        |
|                   | 230.0        | 71.4         | 105.3        | 16.566        | 17.29        | 2.016        | 2948        | 1139        | 61.44        | 0.833        | 21.1        | 77.4        | 50.8        |
|                   | 230.0        | 71.4         | 105.3        | 17.060        | 17.87        | 2.017        | 2988        | 1069        | 54.52        | 0.694        | 17.3        | 76.2        | 50.8        |
|                   | 230.0        | 71.3         | 105.6        | 17.509        | 18.41        | 2.021        | 3016        | 995         | 47.00        | 0.557        | 13.8        | 74.9        | 50.8        |
|                   | 230.0        | 71.2         | 105.9        | 17.928        | 18.91        | 2.027        | 3034        | 915         | 39.03        | 0.425        | 10.5        | 73.6        | 50.7        |
|                   | 230.0        | 71.2         | 106.3        | 18.291        | 19.35        | 2.028        | 3041        | 828         | 29.90        | 0.295        | 7.2         | 72.3        | 50.6        |
|                   | 230.0        | 70.9         | 105.8        | 18.612        | 19.74        | 2.018        | 3040        | 735         | 19.10        | 0.167        | 4.1         | 71.0        | 50.6        |
|                   | 230.0        | 69.8         | 104.8        | 18.741        | 19.96        | 1.995        | 2988        | 636         | 9.16         | 0.069        | 1.7         | 69.3        | 50.5        |
|                   | 230.0        | 73.5         | 110.0        | 18.519        | 19.85        | 2.094        | 2973        | 533         | 21.23        | 0.135        | 3.4         | 69.8        | 50.5        |
|                   | 230.0        | 76.5         | 113.7        | 18.857        | 20.22        | 2.163        | 3038        | 421         | 15.12        | 0.076        | 1.9         | 70.1        | 50.4        |
|                   | 230.0        | 76.9         | 114.4        | 19.004        | 20.39        | 2.171        | 3051        | 300         | 9.85         | 0.035        | 0.9         | 69.8        | 50.4        |
|                   | 230.0        | 78.3         | 116.4        | 19.143        | 20.60        | 2.216        | 3056        | 171         | -3.30        | -0.007       | 0.0         | 69.4        | 50.5        |

DRAWING NO. PAGE 2 of 2 REV.  
**4WNZ5BG** -

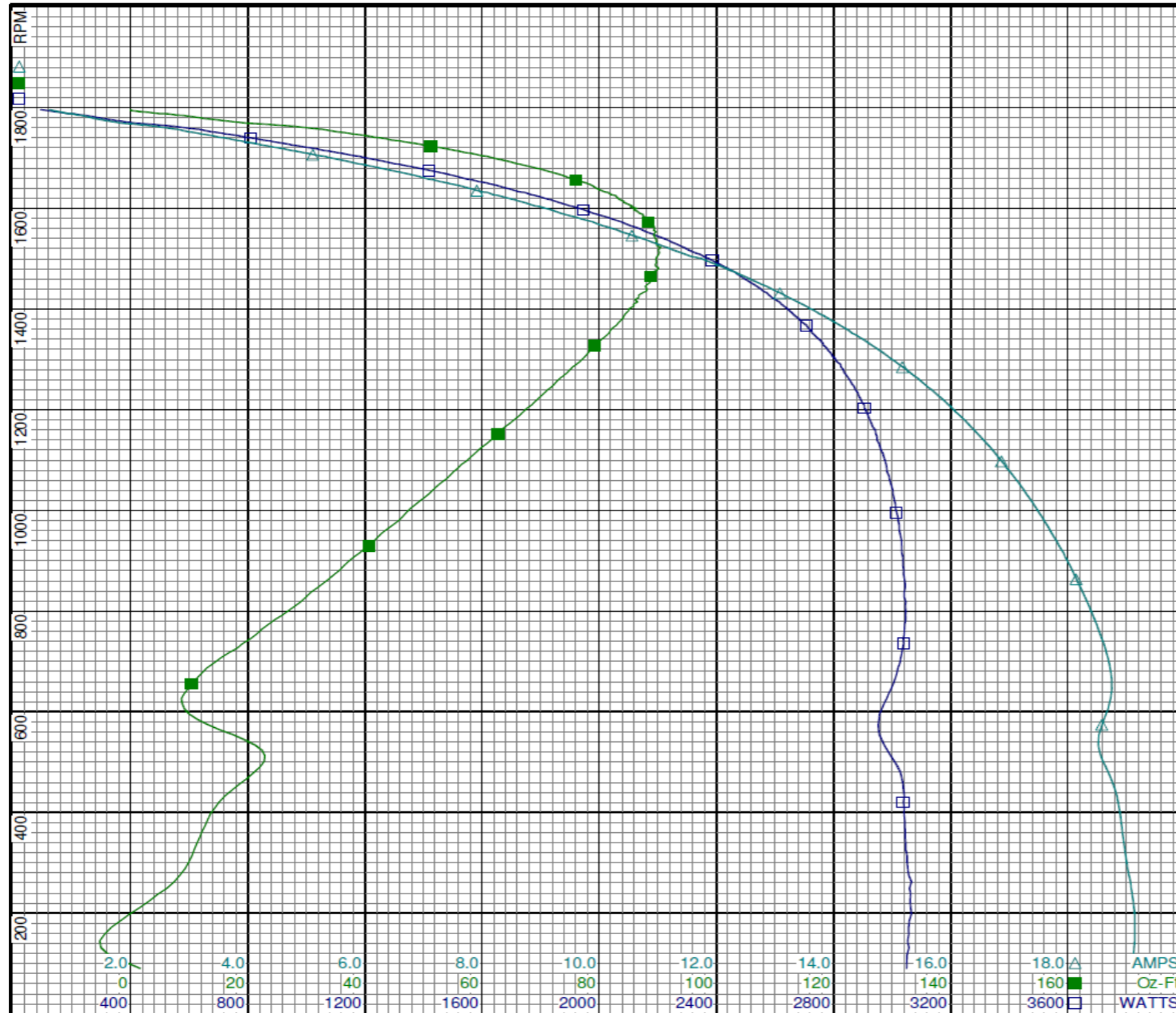
# Performance Data



4WNZ5BG

REV.

-



**Curve Descriptions:**

Motor(1) Test 8 Run 230V 60 Hz 4P  
Provide cap volts, I<sub>main</sub> & I<sub>au</sub>

- SPEED vs WATTS
- SPEED vs TORQUE
- △ SPEED vs ILine

**Motor Ratings:**

(1) T063CKE2276 4WNZ5BG

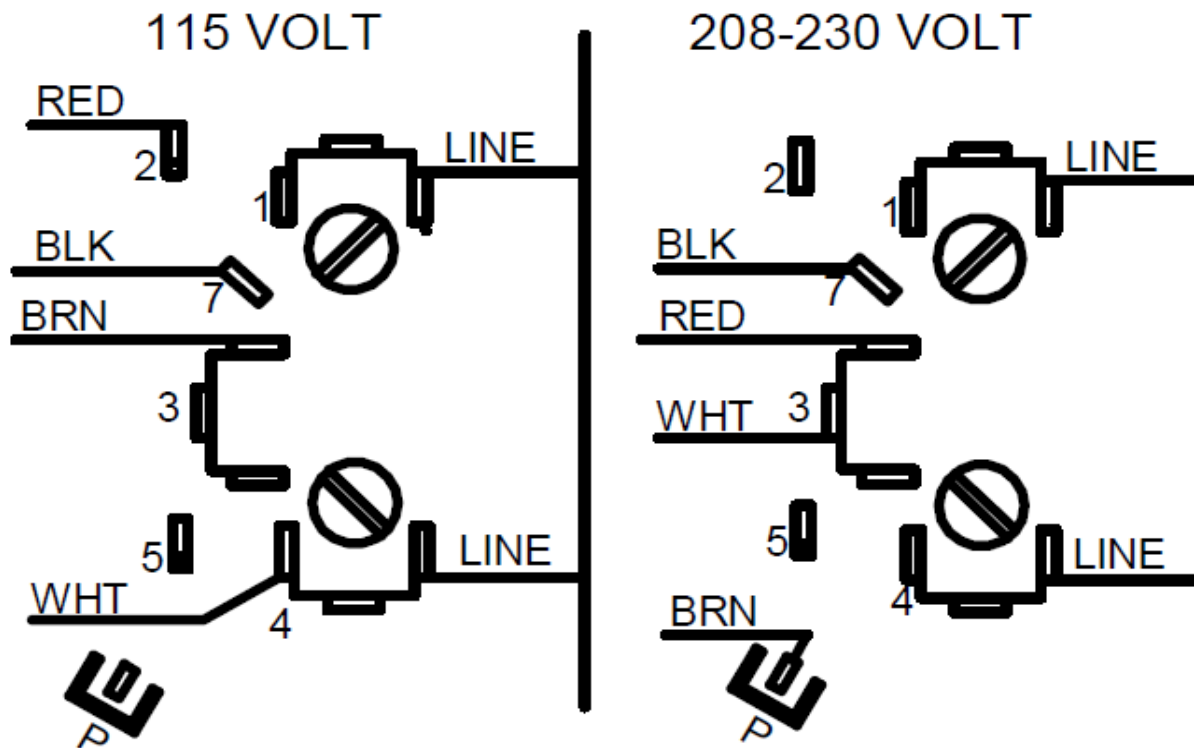
|             |             |      |
|-------------|-------------|------|
| DRAWING NO. | PAGE 2 of 2 | REV. |
| 4WNZ5BG     |             | -    |

Dayton Electric Mfg. Co. Lake Forest, IL 60045 USA

4WNZ5BG

REV.  
0

## CONNECTIONS



MOTOR IS CW ROTATION SHAFT END  
TO REVERSE ROTATION INTERCHANGE  
RED AND BLACK LEADS.

|             |             |      |
|-------------|-------------|------|
| DRAWING NO. | PAGE 1 of 1 | REV. |
| 4WNZ5BG     |             | 0    |

**Dayton**<sup>®</sup>**FARM DUTY MOTOR**

HP: 3/4

VOLTS: 115/208-230

AMPS: 6.1/3.4-3.1

RPM: 1725

DUTY: CONT

SF: 1.30

KVA CODE: K

ENCL: TEAO

THERMALLY PROTECTED: AUTO

MFG. NO. PROT. CODE: 

MTR REF: T63CXCKE-2276

S.F. AT 208V IS 1.00



Part No 4WNZ5BG

PH: 1

HZ: 60

FR: 56

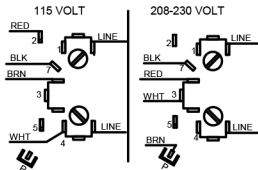
INS CL: B

AMB: 40 °C

SFA: 7.8/4.0

AVG. F.L.  
EFF.Disconnect Power Before Making Any  
Electrical Connections or Changes

## CONNECTIONS

MOTOR IS CW ROTATION SHAFT END  
TO REVERSE ROTATION INTERCHANGE  
RED AND BLACK LEADS.

Mfd for Dayton Electric Mfg. Co., Lake Forest, IL 60045 USA

Made in Mexico