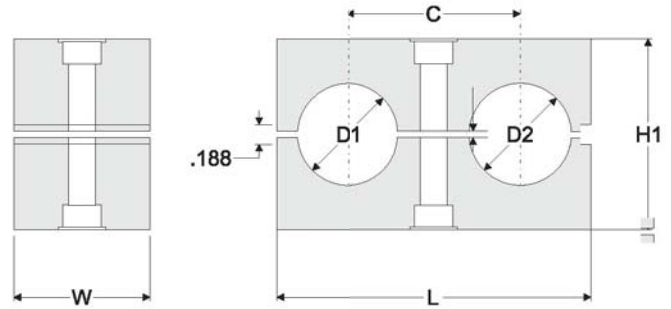


# Twin Series Pipe Clamps

Behringer's clamp pairs are available in different materials and incorporate a modular insert by group size. The Twin Series is available in sizes from 1/4 in. (6.35mm) through 1.660 in. (42mm) outside diameter sizes. The design of the twin series has 2 holes in one clamp, making it ideal for dual runs of pipe, tubing, or hose.



Clamp Pair Material Codes (\*)

<b>P</b>	<b>[PP] Polypropylene</b> Black Color	<b>S</b>	<b>[SP] Santoprene</b> Beige Color
----------	--	----------	---------------------------------------

## Clamp Pair Selection and Part Numbers

Behringer Group	Size	Metric ØD (mm)	Imperial ØD (Inch)	L	C	H	W	Weight Ea.	Clamp Pair (See material for *)	Smooth Bore Clamp Pair (See material for *)
T1	1/4 OD Tube	6.4	0.250	1.435 in. (36.5 mm)	0.787 in. (20 mm)	1.038 in. (26.4 mm)	1.195 in. (30.4 mm)	0.02 lbs	TS-CLH-01*-025	TS-CLH-01*-025SB
	3/8 OD Tube	9.5	0.375						TS-CLH-01*-038	TS-CLH-01*-038SB
	12 mm	12.0	0.472						TS-CLH-01*-047	TS-CLH-01*-047SB
T2	1/4 OD Tube	6.4	0.250	2.105 in. (53.5 mm)	1.142 in. (29 mm)	1.038 in. (26.4 mm)	1.195 in. (30.4 mm)	0.03 lbs	TS-CLH-02*-025	TS-CLH-02*-025SB
	3/8 OD Tube	9.5	0.375						TS-CLH-02*-038	TS-CLH-02*-038SB
	1/8 Pipe	10.0	0.405						TS-CLH-02*-041	TS-CLH-02*-041SB
	1/2 OD Tube	12.7	0.500						TS-CLH-02*-050	TS-CLH-02*-050SB
	1/4 Pipe	13.7	0.540						TS-CLH-02*-054	TS-CLH-02*-054SB
	5/8 OD Tube	16.0	0.625						TS-CLH-02*-062	TS-CLH-02*-062SB
	3/8 Pipe	17.0	0.675						TS-CLH-02*-068	TS-CLH-02*-068SB
T3	3/4 OD Tube	19.0	0.750	2.660 in. (67.6 mm)	1.417 in. (36 mm)	1.580 in. (40.1 mm)	1.195 in. (30.4 mm)	0.07 lbs	TS-CLH-03*-075	TS-CLH-03*-075SB
	1/2 Pipe	21.3	0.840						TS-CLH-03*-084	TS-CLH-03*-084SB
	7/8 OD Tube	22.2	0.875						TS-CLH-03*-087	TS-CLH-03*-087SB
	1 OD Tube	25.4	1.000						TS-CLH-03*-100	TS-CLH-03*-100SB
T4	7/8 OD Tube	22.2	0.875	3.313 in. (84.2 mm)	1.772 in. (45 mm)	1.750 in. (44.4 mm)	1.195 in. (30.4 mm)	0.09 lbs	TS-CLH-04*-087	TS-CLH-04*-087SB
	1 OD Tube	25.4	1.000						TS-CLH-04*-100	TS-CLH-04*-100SB
	3/4 Pipe	26.7	1.050						TS-CLH-04*-105	TS-CLH-04*-105SB
	1 1/8 OD Tube	28.6	1.125						TS-CLH-04*-112	TS-CLH-04*-112SB
T5	3/4 OD Tube	19.0	0.750	4.215 in. (107 mm)	2.205 in. (56 mm)	2.25 in. (57.1 mm)	1.195 in. (30.4 mm)	0.15 lbs	TS-CLH-05*-075	TS-CLH-05*-075SB
	1 1/4 OD Tube	32.0	1.250						TS-CLH-05*-125	TS-CLH-05*-125SB
	1 Pipe	33.4	1.315						TS-CLH-05*-132	TS-CLH-05*-132SB
	1 1/2 OD Tube	38.1	1.500						TS-CLH-05*-150	TS-CLH-05*-150SB
	1 1/4 Pipe	42.2	1.660						TS-CLH-05*-166	TS-CLH-05*-166SB

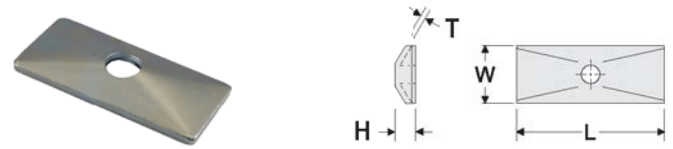
www.behringer.com

# Twin Series Pipe Clamps

## Hardware Selection and Dimensions



Twin Weld Plate [TWP]						
Grp.	Order Number	L	W	T	Thread	Weight Ea.
T1	TS-TWP-01-*	1.625 in. (41.3 mm)	1.20 in. (30.5 mm)	0.188 in. (5 mm)	1/4 - 20 UNC (M6)	0.09 lbs
T2	TS-TWP-02- <sup>-</sup> XXX	2.188 in. (56 mm)	1.20 in. (30.5 mm)	0.188 in. (5 mm)	5/16 - 18 UNC (M8)	0.14 lbs
T3	TS-TWP-03- <sup>-</sup> XXX	2.688 in. (68.3 mm)	1.20 in. (30.5 mm)	0.188 in. (5 mm)	5/16 - 18 UNC (M8)	0.17 lbs
T4	TS-TWP-04- <sup>-</sup> XXX	3.445 in. (87.5 mm)	1.20 in. (30.5 mm)	0.188 in. (5 mm)	5/16 - 18 UNC (M8)	0.20 lbs
T5	TS-TWP-05- <sup>-</sup> XXX	4.315 in. (110 mm)	1.20 in. (30.5 mm)	0.188 in. (5 mm)	5/16 - 18 UNC (M8)	0.26 lbs
<b>*Materials:</b> Z Zinc Plated Steel (Standard Material) T AISI 304 Grade Stainless Steel (A2 - 1.4301/1.4305) X AISI 316 Grade Stainless Steel (A4 - 1.4401/1.4571) C Unplated Carbon Steel <b>XXX Threads:</b> 56H 5/16 - 18 UNC Thread (Standard) 38H 3/8 - 16 UNC Thread (Special) -MET Metric Thread as stated in chart (Special)						



Twin Cover Plate [TCP]						
Grp.	Order Number	L	W	H	T	Weight Ea.
T1	TS-TCP-01-*	1.315 in. (33.4 mm)	1.09 in. (27.7 mm)	-	0.120 in. (3 mm)	0.04 lbs
T2	TS-TCP-02-*	2.040 in. (52 mm)	1.20 in. (30.5 mm)	0.266 in. (7 mm)	0.120 in. (3 mm)	0.08 lbs
T3	TS-TCP-03-*	2.542 in. (65 mm)	1.20 in. (30.5 mm)	0.266 in. (7 mm)	0.120 in. (3 mm)	0.10 lbs
T4	TS-TCP-04-*	3.150 in. (80 mm)	1.20 in. (30.5 mm)	0.266 in. (7 mm)	0.120 in. (3 mm)	0.11 lbs
T5	TS-TCP-05-*	4.125 in. (105 mm)	1.20 in. (30.5 mm)	0.266 in. (7 mm)	0.120 in. (3 mm)	0.14 lbs
<b>*Materials:</b> Z Zinc Plated Steel (Standard Material) T AISI 304 Grade Stainless Steel (A2 - 1.4301/1.4305) X AISI 316 Grade Stainless Steel (A4 - 1.4401/1.4571)						



Hexagon Head Bolt [HEX]				
Grp.	Order Number	L	Thread	Weight Ea.
T1	ST-HEX-01-*	1.25 in. (30 mm)	1/4 - 20 UNC (M6)	0.02 lbs
T2	TS-HEX-02- <sup>-</sup> XXX	1.25 in. (35 mm)	5/16 - 18 UNC (M8)	0.03 lbs
T3	TS-HEX-03- <sup>-</sup> XXX	1.75 in. (45 mm)	5/16 - 18 UNC (M8)	0.04 lbs
T4	TS-HEX-04- <sup>-</sup> XXX	2.00 in. (50 mm)	5/16 - 18 UNC (M8)	0.05 lbs
T5	TS-HEX-05- <sup>-</sup> XXX	2.25 in. (55 mm)	5/16 - 18 UNC (M8)	0.06 lbs
<b>*Materials:</b> Z Zinc Plated Steel (Standard Material) T AISI 304 Grade Stainless Steel (A2 - 1.4301/1.4305) X AISI 316 Grade Stainless Steel (A4 - 1.4401/1.4571) <b>XXX Threads:</b> 56H 5/16 - 18 UNC Thread (Standard) 38H 3/8 - 16 UNC Thread (Special) -MET Metric Thread as stated in chart (Special)				

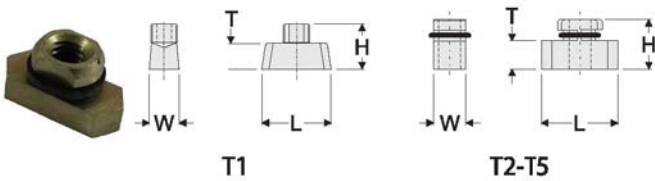


Twin Stacking Bolt [STB]					
Grp.	Order Number	L1	L2	Thread	Weight Ea.
T1	CF*	-	-	-	-
T2	TS-STB-02- <sup>-</sup> XXX	1.25 in. (32 mm)	0.625 in. (16 mm)	5/16 - 18 UNC (M8)	0.04 lbs
T3	TS-STB-03- <sup>-</sup> XXX	1.75 in. (44 mm)	1.125 in. (29 mm)	5/16 - 18 UNC (M8)	0.05 lbs
T4	TS-STB-04- <sup>-</sup> XXX	2.00 in. (50.8 mm)	1.375 in. (35 mm)	5/16 - 18 UNC (M8)	0.06 lbs
T5	TS-STB-05- <sup>-</sup> XXX	2.50 in. (63 mm)	1.875 in. (48 mm)	5/16 - 18 UNC (M8)	0.06 lbs
<b>*Materials:</b> Z Zinc Plated Steel (Standard Material) T AISI 304 Grade Stainless Steel (A2 - 1.4301/1.4305) X AISI 316 Grade Stainless Steel (A4 - 1.4401/1.4571) C Unplated Carbon Steel (Special Order) <b>XXX Threads:</b> 56H 5/16 - 18 UNC Thread (Standard) 38H 3/8 - 16 UNC Thread (Special) -MET Metric Thread as stated in chart (Special)					

\* Consult Factory

# Twin Series Pipe Clamps

## Rail and Strut Mounting Options



Twin Rail Nut [RCN-0]							
Group	Order Number	L	W	T	H	Thread	Weight Ea.
T1	ST-RCN-99- <sup>a</sup> -RN0	0.950 in. (24 mm)	0.405 in. (10.2 mm)	0.210 in. (5.3 mm)	0.570 in. (15 mm)	1/4 - 20 UNC (M6)	0.02 lbs
T2-T5	TS-RCN-99- <sup>a</sup> -RN0	1.000 in. (25.4 mm)	0.420 in. (10.7 mm)	0.210 in. (5.3 mm)	0.570 in. (15 mm)	5/16 - 18 UNC (M8)	0.02 lbs

**\*Materials:** Y Yellow Zinc Plated Steel (Standard Material Groups T2-T5)  
 Z Zinc Plated Steel (Group T1 as Standard Material, Special T2-T5)  
 T AISI 304 Grade Stainless Steel (A2 - 1.4301/1.4305)  
 X AISI 316 Grade Stainless Steel (A4 - 1.4401/1.4571)  
 C Unplated Carbon Steel (Special Material)



Twin Rail Nut [RCN-1/RCN-4]							
Grp.	Order Number	L	W	T	H	Thread	Weight Ea.
T1	ST-RCN-99- <sup>a</sup> -RN1	1.075 in. (27.3 mm)	0.783 in. (20 mm)	0.175 in. (4.4 mm)	0.405 in. (10 mm)	1/4-20 UNC (M6)	0.04 lbs
T2-T5	TS-RCN-99- <sup>a</sup> -RN4	1.075 in. (27.3 mm)	0.783 in. (20 mm)	0.175 in. (4.4 mm)	0.405 in. (10 mm)	5/16-18 UNC (M8)	0.04 lbs

**\*Materials:** Z Zinc Plated Steel (Group T1 Standard Material, Special T2-T5)  
 T AISI 304 Grade Stainless Steel (A2 - 1.4301/1.4305)  
 X AISI 316 Grade Stainless Steel (A4 - 1.4401/1.4571)  
 C Unplated Carbon Steel (Special Material)



Mounting Rail [RAL-0]							
Group	Order Number	W1	W2	T	H	Length	Weight
0-7A	ST-RA0-99- <sup>a</sup> -XXX	1.125 in. (28 mm)	0.438 in. (11 mm)	14 gauge	0.438 in. (11 mm)	6FT 3FT	3.94 1.97

**\*Materials:** C Unplated Carbon Steel (Standard Material)  
 T AISI 304 Grade Stainless Steel (A2 - 1.4301/1.4305)  
 X AISI 316 Grade Stainless Steel (A4 - 1.4401/1.4571)  
 Z Zinc Plated Steel

**XXX Length:** 6FT 72 in. (1829 mm) Length (Standard Length)  
 3FT 36 in. (914 mm) Length (Special Length)  
 -Custom sizes available on request-



Mounting Rail [RAL-1]							
Group	Order Number	W1	W2	T	H	Length	Weight
0-7A	ST-RA1-99- <sup>a</sup> -XXX	1.438 in. (36.5 mm)	0.625 in. (16 mm)	14 gauge	0.438 in. (11 mm)	6FT 3FT	4.65 2.33

**\*Materials:** Z Zinc Plated Steel (Standard Material)  
 T AISI 304 Grade Stainless Steel (A2 - 1.4301/1.4305)  
 X AISI 316 Grade Stainless Steel (A4 - 1.4401/1.4571)  
 C Unplated Carbon Steel (Special Order)

**XXX Length:** 6FT 72 in. (1829 mm) Length (Standard Length)  
 3FT 36 in. (914 mm) Length (Special Length)  
 -Custom sizes available on request-



Twin Safety Plate [SAF]					
Grp.	Order Number	W	B	T	Weight Ea.
T1	N/A	-	-	-	-
T2-T5	TS-SAF-02- <sup>a</sup>	0.719 in. (18mm)	0.510 in. (13 mm)	0.050 in. (1.3 mm)	0.04 lbs

**\*Materials:** Y Yellow Zinc Plated Steel (Standard Material)  
 Z Zinc Plated Steel (Special Material)  
 T AISI 304 Grade Stainless Steel (A2 - 1.4301/1.4305)  
 X AISI 316 Grade Stainless Steel (A4 - 1.4401/1.4571)  
 C Unplated Carbon Steel (Special Material)



Strut Clip Nut [UCN]						
Group	Order Number	L	W	H1	H2	Thread
T1	ST-UCN-99- <sup>a</sup>	1.660 in. (42 mm)	0.635 in. (16 mm)	0.525 in. (13 mm)	0.813 in. (20.5 mm)	1/4 - 20 UNC
T2-T3	TS-UCN-23-2	1.500 in. (38 mm)	2.090 in. (53 mm)	0.730 in. (18.5 mm)	1.080 in. (27.5 mm)	5/16 - 18 UNC
T4-T5	TS-UCN-45-2	1.500 in. (38 mm)	3.150 in. (80 mm)	0.730 in. (18.5 mm)	1.080 in. (27.5 mm)	5/16 - 18 UNC

**\*Materials:** Z Zinc Plated Steel (Standard Material)  
 T AISI 304 Grade Stainless Steel (A2 - 1.4301/1.4305)  
 X AISI 316 Grade Stainless Steel (A4 - 1.4401/1.4571)  
 C Unplated Carbon Steel (Special Order)

www.behringersystems.com

# Twin Series Pipe Clamps

## Complete Assembly Ordering Code

chart 1 chart 2 chart 3 chart 4 chart 5 chart 6  
**TW T 41050-PPSB - MET**

Clamp Configuration <span style="float: right;">chart 1</span>	
TW	Complete Clamp for Weld Mounting
R0T	Complete Clamp for Mounting to RAL-0
R1T/R4T	Complete Clamp for Mounting to RAL-1
UT	Complete Clamp for Mounting to Strut Channel
TWSK	Complete Stacking Kit

Hardware Material <span style="float: right;">chart 2</span>	
Omit	Electro-Zinc Dichromate Plating
T	AISI 304 Stainless Steel (A2 - 1.4301/1.4305)
X	AISI 316/316Ti Stainless Steel (A4 - 1.4401/1.4571)
C	Untreated Carbon Steel

Clamp Pair Material <span style="float: right;">chart 4</span>	
PP	Polypropylene
SP	Santoprene

Clamp Pair Design <span style="float: right;">chart 5</span>	
Omit	Ribbed Inside
SB	Smooth Bore Inside (groups H3-H6 only)

Threads <span style="float: right;">chart 6</span>	
Omit	UNC Thread (Standard)
MET	Metric Thread


Clamp Group and Size <span style="float: right;">chart 3</span>					
Behringer Group	Pipe Size	Tube Size	Metric OD (mm)	Imperial OD (Inch)	Order No.
T1		1/4	6.4	0.250	1025
		3/8	9.5	0.375	1038
		12 mm	12.0	0.472	10472
T2		1/4	6.5	0.250	2025
		3/8	9.5	0.375	2038
	1/8		10.0	0.405	20405
		1/2	12.7	0.500	2050
	1/4		13.7	0.540	20540
		5/8	16.0	0.625	2062
T3		3/8	17.0	0.675	20675
		3/4	19.0	0.750	3075
	1/2		21.3	0.840	30840
		7/8	22.2	0.875	3087
T4		1	25.4	1.000	3100
		7/8	22.2	0.875	4087
		1	25.4	1.000	4100
	3/4		26.7	1.050	41050
		1 1/8	28.6	1.125	41125
T5		3/4	19.0	0.750	5075
		1 1/4	32.0	1.250	5125
	1		33.4	1.315	51315
		1 1/2	38.1	1.500	5150
	1 1/4		42.2	1.660	51660

# Twin Series Pipe Clamps

## Ordering Examples

**Clamp for Weld Mounting**

**TW**



**Consists of:**  
1 HEX bolt  
1 TCP Cover Plate  
1 CLH Clamp Set (2 halves)  
1 TWP Weld Plate

**Stacking Kit**


**TWSK**



**Consists of:**  
1 STB Stacking bolt  
1 SAF Safety Plate  
1 CLH Clamp Set (2 halves)

**Clamp for RAL-0 Mounting**


**R0T**



**Consists of:**  
1 HEX bolt  
1 TCP Cover Plate  
1 CLH Clamp Set (2 halves)  
1 RCN-0 Rail Nut

**Clamp for RAL-1 Mounting**


**R1T**  
**R4T**



**Consists of:**  
1 HEX bolt  
1 TCP Cover Plate  
1 CLH Clamp Set (2 halves)  
1 RCN-4 Rail Nut

**Clamp for Strut Mounting**

**UT**



**Consists of:**  
1 HEX bolt  
1 TCP Cover Plate  
1 CLH Clamp Set (2 halves)  
1 UCN Strut Clip Nut

www.behringersystems.com