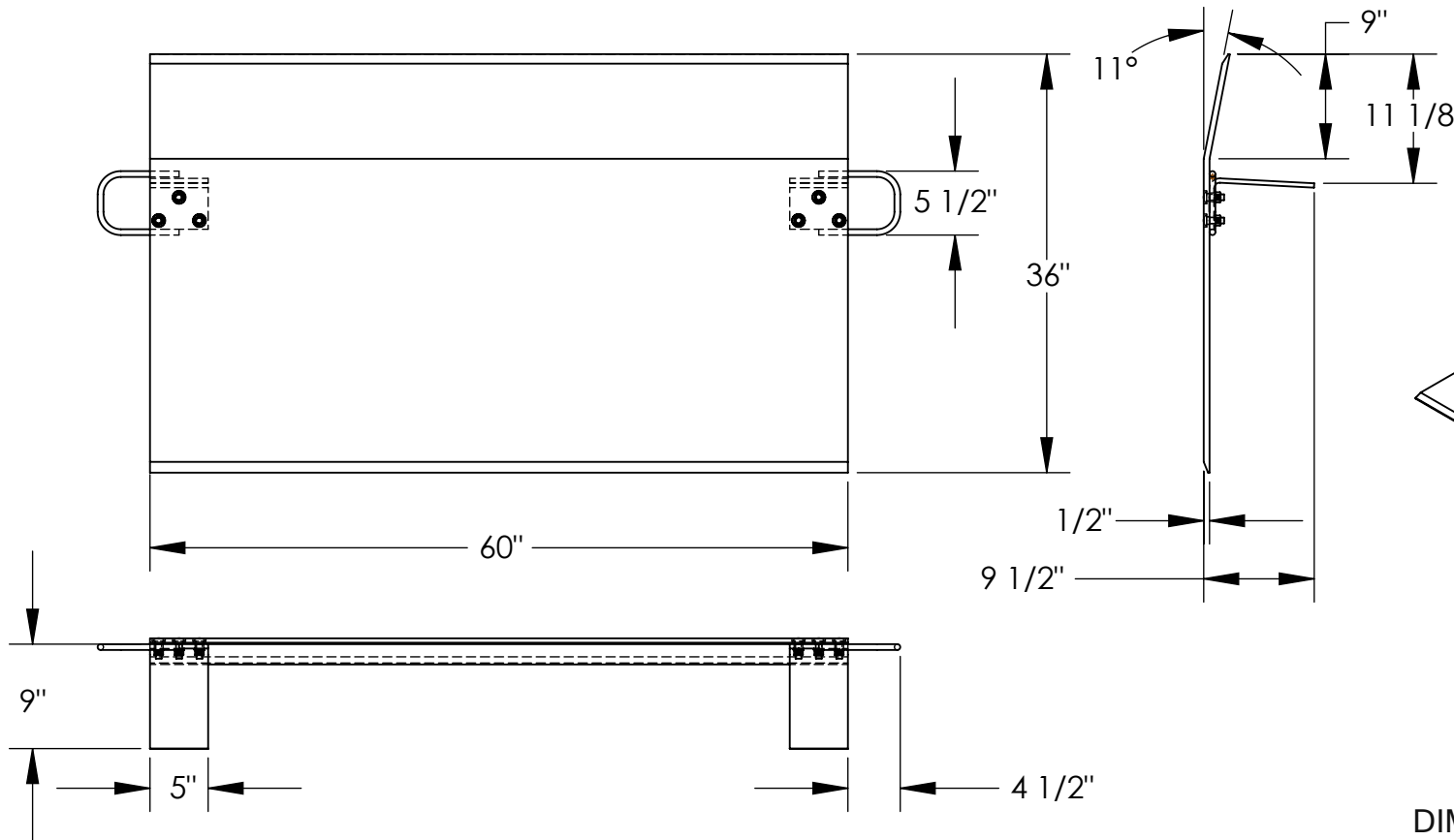


ALUMINUM TRUCK DOCKPLATE MODEL - EH-6036

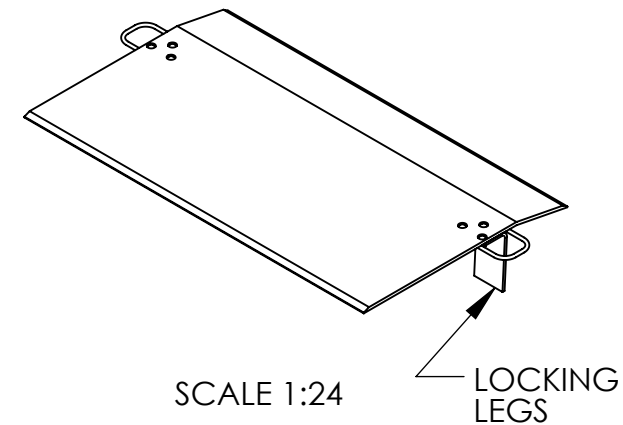
APPROX WEIGHT: 118.46 lbs.
DOES NOT INCLUDE WEIGHT OF POWER OR PACKAGING!!!

*** ANY ADDITIONS, DELETIONS, OR OMISSIONS MUST BE CORRECTED ON THIS DRAWING AS THIS DRAWING WILL BE CONSIDERED ALL INCLUSIVE ***

ALL GRAPHICS PROVIDED ARE FOR REFERENCE ONLY. IF CERTAIN DIMENSIONS ARE CRITICAL PLEASE VERIFY THOSE DIMENSIONS WITH YOUR SALESPERSON



NOTE: BEND OR CROWN IS 11° AND LOCATED 9" FROM EDGE OF DOCKPLATE



DIMENSION TOLERANCE ± 1/4"

STANDARD FEATURES

- MODEL NUMBER: EH-6036
- CAPACITY: 6,600 LBS.
- OVERALL WIDTH: 60"
- OVERALL LENGTH: 36"
- OVERALL HEIGHT: 9 1/2"
- THICKNESS: 1/2"
- HANDLES ARE: BOLT ON & 5 1/2" W x 4 1/2" LG
- LOCKING LEGS ARE: 5" W x 9" LG

SPECIAL FEATURES

NONE

APPROVAL

I, THE UNDERSIGNED, AGREE THAT THE PRODUCT AS REPRESENTED SATISFIES DESIGN AND DIMENSION REQUIREMENTS. I ALSO ACKNOWLEDGE MY DUTY TO CONFIRM PRODUCT AND INSTALLATION COMPLIANCE WITH ALL APPLICABLE FEDERAL, STATE AND LOCAL REGULATIONS AND STANDARDS.

ALL SPECIAL UNITS ARE NON-RETURNABLE

[] As drawn [] As marked

Signed: _____ Date: _____

LEAD TIME WILL START UPON RECEIPT OF SIGNED APPROVAL DRAWING

FOR INTERNAL USE ONLY PROJECT SIGN OFF	
SALES	
ENG.	
FAB.	
POWER	

DISTRIBUTOR'S NAME:		P.O.#	X
DRAWN BY: ADL		W.O.#	X
DATE: 01/19/06		SALES:	X
REFERENCE: X	SCALE: 1:16	FILE NAME:	
QUOTED LEAD TIME: X	QUOTE #	12-007-052	
	X		