

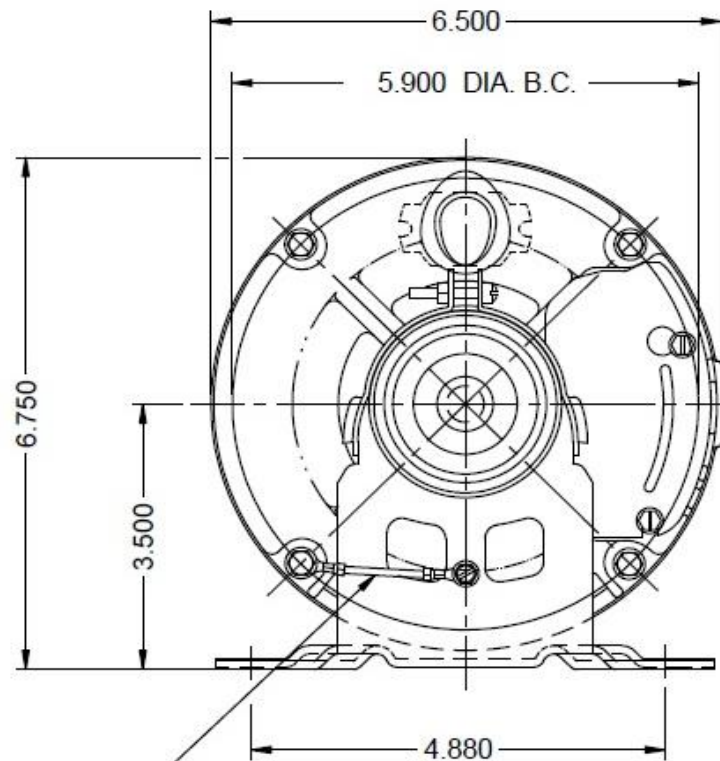
# Dimensional Drawing

**4VAG3BG**

REV.

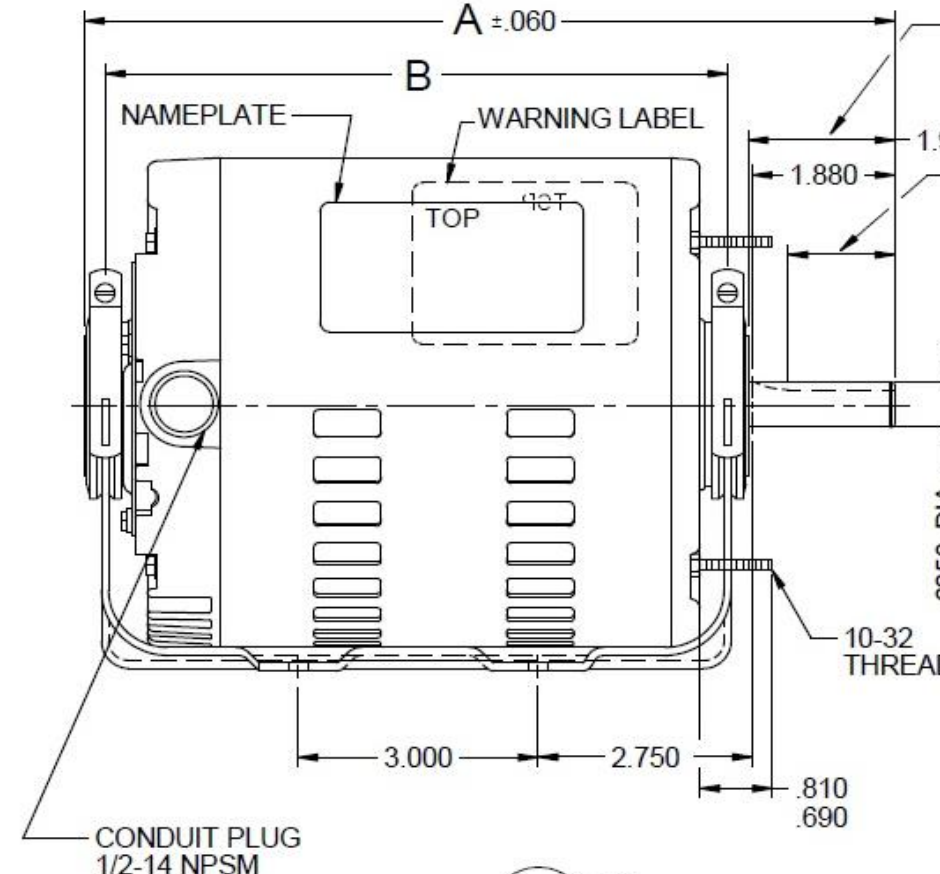
-

VAR	MODEL	CUST. PT. NO.	A	B	C	D	HP	VOLTS	SF	AMPS	HZ	RPM	CONN VOLTS	PROT.	DESCRIPTION / REMARKS
001	S63CXSB-8174	4VAG3BG	9.81	7.400	-----	-----	3/4	115/208-230	1.15	11.8/6-6.1	60	1725	---	AUTO	56, ODP

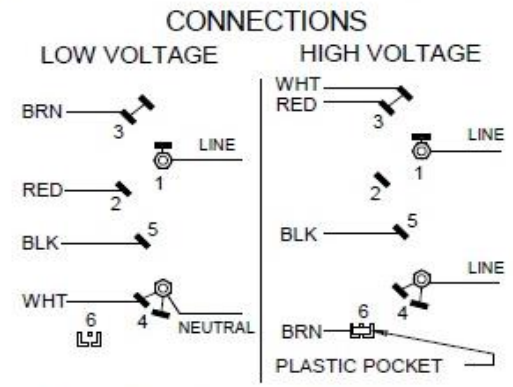
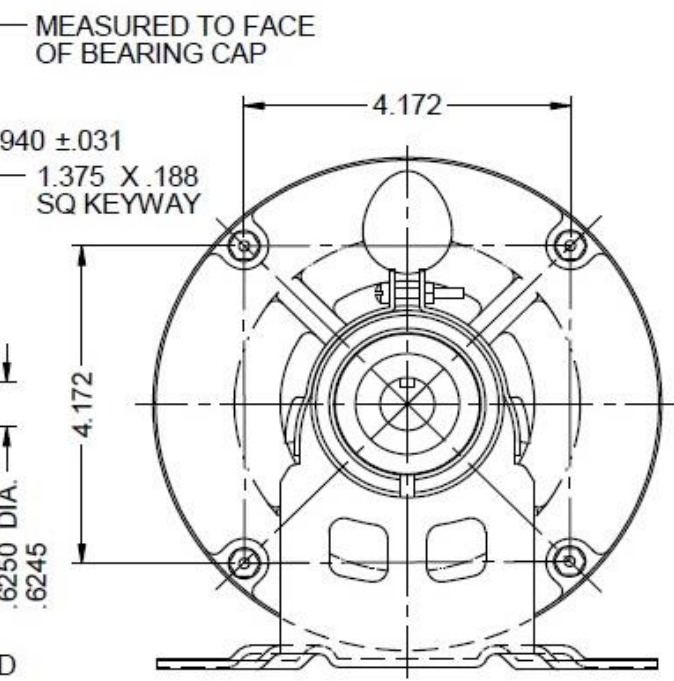
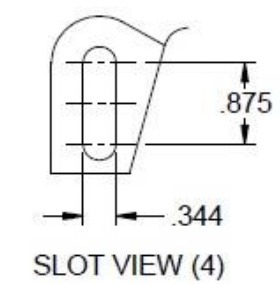


GROUND LEAD (1): GREEN; 16 AWG; .031 (PVC) INSULATION; TO BE 3.000 ±.250 BETWEEN CENTERS OF TERMS.; #10 RING TERMINATION

NOTE: KEY AND INSTRUCTION BOOK SHIPPED AS A KIT IN A PLASTIC BAG



CONDUIT PLUG 1/2-14 NPSM



ROTATION: CCW LEAD END TO REVERSE ROTATION INTERCHANGE RED AND BLACK LEADS

DRAWING NO.	PAGE 1 of 1	REV.
4VAG3BG		-

# Performance Data



**4VAG3BG**

REV.  
-

## SPLIT-PHASE & CAPACITOR START MOTOR PERFORMANCE

<b>HP:</b>	3/4						
<b>Poles:</b>	4						
<b>Ambient (°C):</b>	60						
<b>Altitude (FASL):</b>							
<b>No. of Speeds:</b>	1						
<b>Volts:</b>	115/208-230	115	208	230			
<b>HZ:</b>	60	60	60	60			
<b>Service Factor:</b>	1.15						
<b>Efficiency:</b>	@ Rated Load	66.3	66.0	65.6			
<b>Power Factor:</b>	@ Rated Load	67.8	74.4	67.8			
<b>Amps:</b>	@ No Load						
	@ Rated Load	10.8	5.4	5.5			
	@ Service Factor	11.7	6	6			
	@ Locked Rotor				53.3		
<b>RPM:</b>	@ Rated Load				1718		
<b>Torques:</b>	Breakdown	81.4	67.7	84.2			
	Locked Rotor	32.9	24.3	29.9			
	Pull-Up	31.7	24.3	29.7			
	Rated Load	36.5	36.5	36.5			
	Service Factor	42	42	42			
<b>Watts:</b>	Rated Load	840	837	851			
<b>KVA Code:</b>	K	K	H	K			
<b>Temperature Rise:</b>	@ Rated Load	41.9	43.4	47			
	@ Service Factor	51.7	66.2	55.4			
<b>Thermal Protector:</b>	Trip Temp (°C)	136.1	140.6	138.8			
<b>Winding Material:</b>	Start (Auxiliary)	Cu	Cu	Cu			
	Run (Main)	Cu	Cu	Cu			
<b>Capacitor(s):</b>	Start (MFD / Volts)	N/A					
	No. of Start Capacitors						
	Run (MFD / Volts)	N/A					
	No. of Run Capacitors						

### LOW SPEED PERFORMANCE DATA:

<b>HP:</b>							
<b>Poles:</b>							
<b>Volts:</b>							
<b>HZ:</b>							
<b>Efficiency:</b>	@ Rated Load						
<b>Power Factor:</b>	@ Rated Load						
<b>Amps:</b>	@ No Load						
	@ Rated Load						
	@ Service Factor						
	@ Locked Rotor						
<b>Torques:</b>	BreakDown						
	Locked Rotor						
	Pull-Up						
	Rated Load						
	Service Factor						
<b>Watts:</b>	@ Rated Load						
<b>Temperature Rise:</b>	@ Rated Load						
	@ Service Factor						

DRAWING NO. PAGE 1 of 1 REV.  
4VAG3BG -

# Performance Data



**4VAG3BG**

REV.

-

## Dayton Manufacturing Company

### Motor Description

Model: S63CXCXSJB8174 4VAG3BG  
 Motor ID: 1 of 1  
 Poles: 4  
 Volts: 115/208-230  
 Frequency: 60  
 HP: .75  
 Speed: 1725  
 Phase: 1  
 Protector: CEJ65CS

### Test Conditions

Test Type: Start  
 Test Number: 11  
 Poles: 4  
 Volts: 115  
 Hz: 60  
 Rotation:  
 Special Cond:  
 Speed Conn:  
 TestBoard: Amtps Performance Fixture #1  
 Run Cap: 0  
 Start Cap: 0µfd  
 Environment: 20.4 Deg C 28 % RH 993 hPa  
 Tested: 12/1/2015 9:07:36 AM  
 Tested By: Sharp, Gerald  
 Gear Ratio: 1:1  
 Bearing Friction: -0.25 Oz-Ft  
 Windage Torque: -0.74 Oz-Ft

Special Points	Vline (V)	Iline (A)	Imain (A)	Iaux (A)	Watts	RPM	Tq (Oz-ft)	HP	Eff (%)	PF (%)
PUT OZ-FT	115.0	53.33	43.36	10.620	4946	4	32.85	0.002	0.0	80.6
	<b>115.0</b>	<b>53.28</b>	<b>43.31</b>	<b>10.596</b>	<b>4941</b>	<b>7</b>	<b>31.70</b>	<b>0.002</b>	<b>0.0</b>	<b>80.7</b>
	115.0	53.25	43.31	10.554	4942	27	32.88	0.011	0.2	80.7
	115.0	53.26	43.45	10.289	4930	156	35.64	0.066	1.0	80.5
	115.0	52.91	43.23	10.049	4912	279	41.59	0.138	2.1	80.7
	115.0	52.47	42.95	9.790	4872	393	47.25	0.221	3.4	80.7
	115.0	51.94	42.64	9.486	4825	499	50.22	0.299	4.6	80.8
	115.0	51.55	42.49	9.168	4778	599	49.06	0.350	5.5	80.6
	115.0	51.23	42.27	8.978	4764	692	45.82	0.378	5.9	80.9
	115.0	50.65	41.71	8.910	4737	780	46.31	0.430	6.8	81.3
	115.0	49.86	40.91	8.905	4699	862	48.45	0.497	7.9	82.0
	115.0	48.99	40.09	8.876	4646	939	51.64	0.577	9.3	82.5
	115.0	48.07	39.21	8.852	4577	1011	54.73	0.659	10.7	82.8
	115.0	47.33	38.29	8.858	4516	1077	56.06	0.719	11.9	83.0
	115.0	46.32	37.35	8.889	4444	1139	57.64	0.781	13.1	83.4
	115.0	45.25	36.35	8.938	4355	1197	58.80	0.838	14.3	83.7
	115.0	44.17	35.34	9.029	4269	1251	57.99	0.864	15.1	84.0
	115.0	43.08	34.30	9.144	4174	1300	57.36	0.888	15.9	84.3
	115.0	41.96	33.22	9.284	4077	1346	56.22	0.901	16.5	84.5
	115.0	40.88	32.18	9.451	3980	1389	55.16	0.912	17.1	84.7
	115.0	39.76	31.08	9.635	3876	1428	52.73	0.896	17.3	84.8
	115.0	38.66	30.01	9.835	3773	1465	50.20	0.876	17.3	84.9
	115.0	37.60	28.94	10.054	3670	1498	47.54	0.848	17.2	84.9
	115.0	36.57	27.91	10.279	3570	1530	44.39	0.808	16.9	84.9
	115.0	35.54	26.86	10.514	3463	1559	39.57	0.735	15.8	84.7
	115.0	34.54	25.82	10.760	3363	1586	33.31	0.629	13.9	84.7
	115.0	33.59	24.83	10.993	3263	1611	31.12	0.597	13.6	84.5
	115.0	32.67	23.84	11.238	3166	1635	25.10	0.489	11.5	84.3
	115.0	31.76	22.91	11.476	3069	1656	21.38	0.421	10.2	84.0
	115.0	30.89	21.92	11.720	2969	1676	14.79	0.295	7.4	83.6
	115.0	30.10	20.99	11.962	2873	1695	10.98	0.222	5.8	83.0
	115.0	29.25	20.07	12.126	2783	1714	4.94	0.101	2.7	82.7
	115.0	28.65	19.31	12.330	2704	1728	0.00	0.000	0.0	82.1

DRAWING NO. PAGE 1 of 8 REV.  
 4VAG3BG -



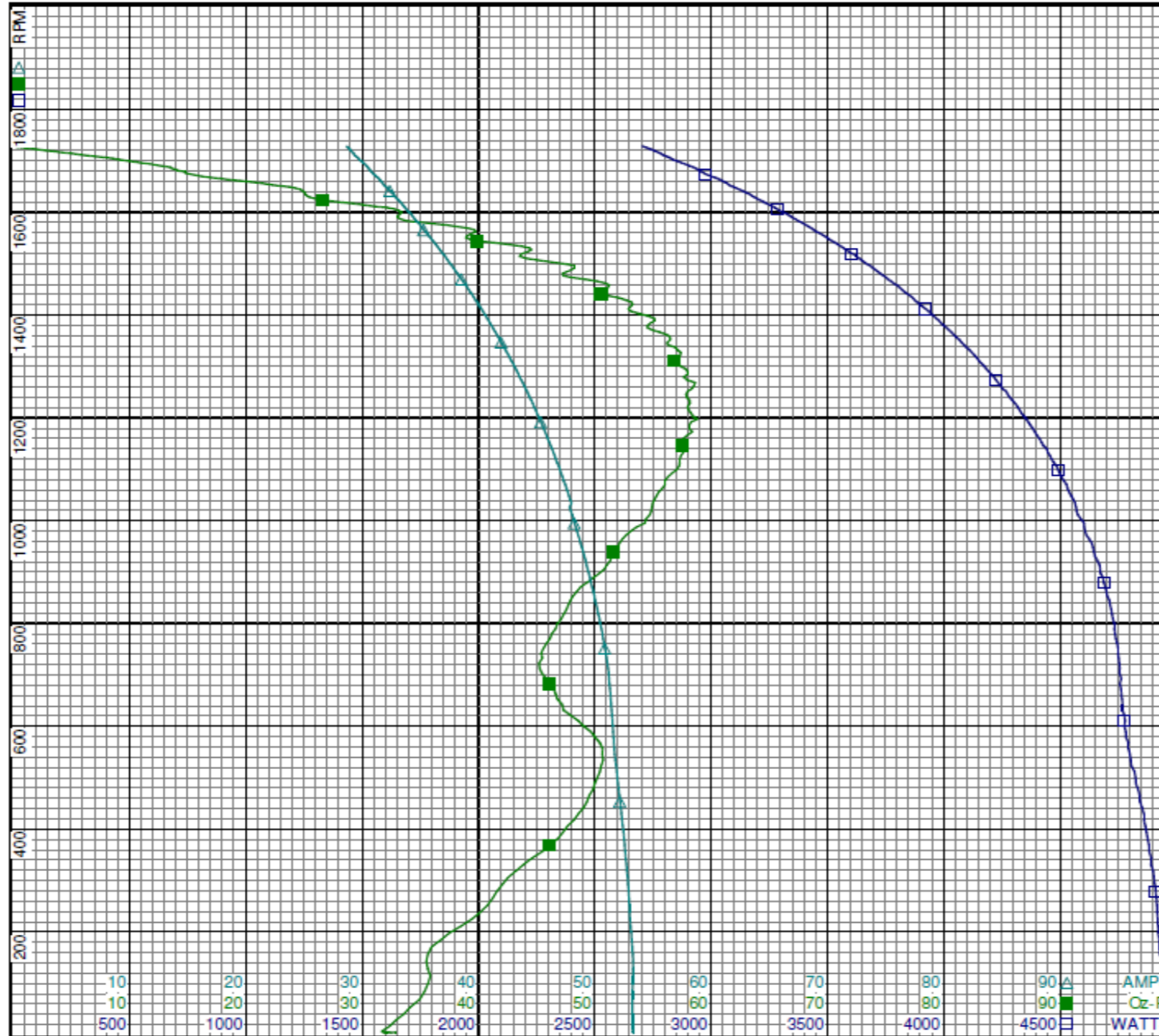
# Performance Data



4VAG3BG

REV.

-



Curve Descriptions:  
 Motor(1) Test 11 Start 115V 60 Hz 4P

- SPEED vs WATTS
- SPEED vs TORQUE
- △ SPEED vs ILine

Motor Ratings:  
 (1) S63CXCXSJB8174 ID: 1 of 1

DRAWING NO.	PAGE 2 of 8	REV.
4VAG3BG		-

Dayton Electric Mfg. Co. Lake Forest, IL 60045 USA

©2019 W.W. Grainger, Inc. This design may not be reproduced, modified or redistributed without written permission from W.W. Grainger, Inc.

# Performance Data



**4VAG3BG**

REV.

-

## Dayton Manufacturing Company

### Motor Description

Model: S63CXCXSJB8174 4VAG3BG  
 Motor ID: 1 of 1  
 Poles: 4  
 Volts: 115/208-230  
 Frequency: 60  
 HP: .75  
 Speed: 1725  
 Phase: 1  
 Protector: CEJ65CS

### Test Conditions

Test Type: Run  
 Test Number: 10  
 Poles: 4  
 Volts: 115  
 Hz: 60  
 Rotation:  
 Special Cond:  
 Speed Conn:  
 TestBoard: Amtps Performance Fixture #1  
 Run Cap: 0  
 Start Cap: 0µfd  
 Environment: 20.4 Deg C 28 % RH 993 hPa  
 Tested: 12/1/2015 9:06:35 AM  
 Tested By: Sharp, Gerald  
 Gear Ratio: 1:1  
 Bearing Friction: -0.29 Oz-Ft  
 Windage Torque: -0.83 Oz-Ft

Special Points	Vline (V)	Iline (A)	Watts	RPM	Tq(Oz-ft)	HP	Eff (%)	PF (%)
	115.0	8.17	178	1788	0.00	0.000	0.0	19.0
	115.0	8.38	361	1771	11.20	0.236	48.9	37.4
	115.0	9.15	564	1750	22.52	0.469	62.1	53.6
	115.0	10.14	733	1731	31.17	0.642	65.4	62.8
<b>36.52 OZ-FT</b>	<b>115.0</b>	<b>10.78</b>	<b>840</b>	<b>1718</b>	<b>36.52</b>	<b>0.747</b>	<b>66.3</b>	<b>67.8</b>
<b>0.75 HP</b>	<b>115.0</b>	<b>10.80</b>	<b>844</b>	<b>1718</b>	<b>36.67</b>	<b>0.750</b>	<b>66.3</b>	<b>67.9</b>
	115.0	11.24	911	1711	39.59	0.806	66.0	70.5
<b>42 OZ-FT</b>	<b>115.0</b>	<b>11.71</b>	<b>974</b>	<b>1704</b>	<b>42.00</b>	<b>0.852</b>	<b>65.3</b>	<b>72.3</b>
	115.0	12.60	1087	1689	46.19	0.929	63.8	75.0
	115.0	14.08	1273	1667	54.95	1.091	63.9	78.6
	115.0	15.63	1458	1643	60.00	1.173	60.0	81.1
	115.0	17.22	1632	1616	66.89	1.287	58.8	82.4
	115.0	18.85	1808	1588	69.06	1.306	53.9	83.4
	115.0	20.57	1989	1557	74.75	1.386	52.0	84.1
	115.0	22.32	2163	1523	78.73	1.427	49.2	84.2
	115.0	23.96	2322	1487	80.99	1.433	46.1	84.3
<b>BDT OZ-FT</b>	<b>115.0</b>	<b>25.55</b>	<b>2471</b>	<b>1451</b>	<b>81.37</b>	<b>1.406</b>	<b>42.4</b>	<b>84.1</b>
	115.0	25.72	2485	1447	81.14	1.398	42.0	84.0
	115.0	27.44	2641	1404	79.95	1.336	37.7	83.7
	115.0	29.15	2789	1356	78.29	1.264	33.8	83.2
	115.0	30.80	2928	1305	76.47	1.188	30.3	82.7
	115.0	32.40	3054	1250	73.39	1.092	26.7	82.0
	115.0	33.95	3173	1190	69.36	0.982	23.1	81.3
	115.0	35.38	3275	1124	64.36	0.861	19.6	80.5
	115.0	36.73	3369	1054	58.62	0.736	16.3	79.7
	115.0	38.01	3452	978	52.22	0.608	13.1	79.0
	115.0	39.17	3524	897	45.33	0.484	10.2	78.2
	115.0	40.22	3578	810	37.72	0.364	7.6	77.3
	115.0	41.13	3614	717	31.32	0.267	5.5	76.4
	115.0	41.73	3627	617	27.35	0.201	4.1	75.6
	115.0	42.03	3647	510	27.95	0.170	3.5	75.4
	115.0	42.45	3689	396	23.88	0.113	2.3	75.6
	115.0	42.87	3722	274	15.46	0.050	1.0	75.5
	115.0	43.14	3742	145	7.83	0.014	0.3	75.4

DRAWING NO.	PAGE 3 of 8	REV.
	<b>4VAG3BG</b>	-

Dayton Electric Mfg. Co. Lake Forest, IL 60045 USA

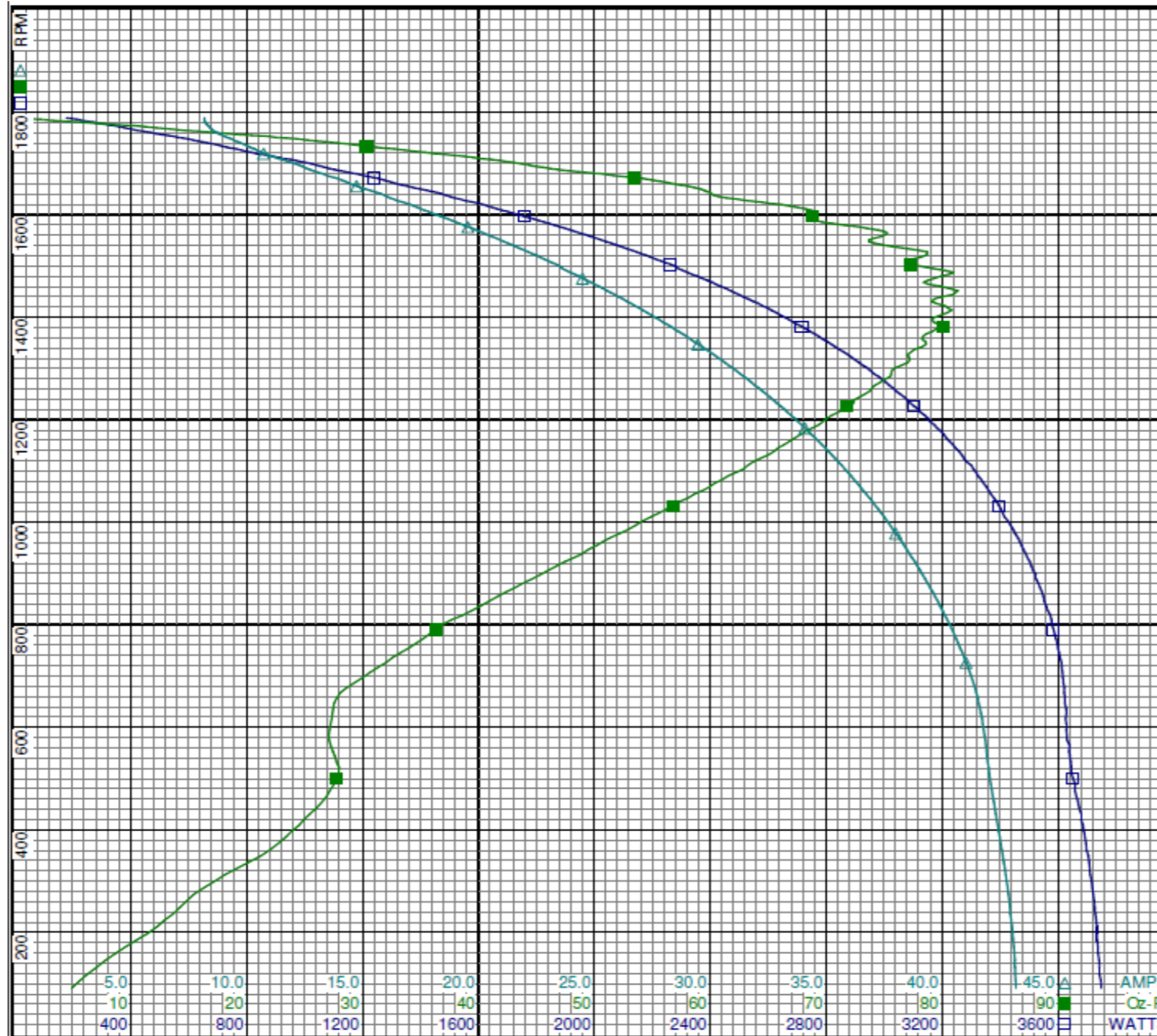
# Performance Data



4VAG3BG

REV.

-



Curve Descriptions:  
 Motor(1) Test 10 Run 115V 60 Hz 4P  
 □ SPEED vs WATTS  
 ■ SPEED vs TORQUE  
 △ SPEED vs ILine

Motor Ratings:  
 (1) S63CXCXSJB8174 ID: 1 of 1

DRAWING NO. PAGE 4 of 8 REV.  
 4VAG3BG -

Dayton Electric Mfg. Co. Lake Forest, IL 60045 USA

©2019 W.W. Grainger, Inc. This design may not be reproduced, modified or redistributed without written permission from W.W. Grainger, Inc.

# Performance Data



**4VAG3BG**

REV.

-

## Dayton Manufacturing Company

### Motor Description

Model: S63CXCXSJB8174 4VAG3BG  
 Motor ID: 1 of 1  
 Poles: 4  
 Volts: 115/208-230  
 Frequency: 60  
 HP: .75  
 Speed: 1725  
 Phase: 1  
 Protector: CEJ65CS

### Test Conditions

Test Type: Start  
 Test Number: 17  
 Poles: 4  
 Volts: 230  
 Hz: 60  
 Rotation:  
 Special Cond:  
 Speed Conn:  
 TestBoard: Amtps Performance Fixture #1  
 Run Cap: 0  
 Start Cap: 0µfd  
 Environment: 20.4 Deg C 28 % RH 993 hPa  
 Tested: 12/1/2015 8:59:05 AM  
 Tested By: Sharp, Gerald  
 Gear Ratio: 1:1  
 Bearing Friction: -0.21 Oz-Ft  
 Windage Torque: -1.13 Oz-Ft

Special Points	Vline (V)	Iline (A)	Imain (A)	Iaux (A)	Watts	RPM	Tq (Oz-ft)	HP	Eff (%)	PF (%)
PUT OZ-FT	230.0	26.81	17.837	9.736	4827	3	29.92	0.001	0.0	78.3
	<b>230.0</b>	<b>26.81</b>	<b>17.843</b>	<b>9.729</b>	<b>4825</b>	<b>3</b>	<b>29.71</b>	<b>0.001</b>	<b>0.0</b>	<b>78.3</b>
	230.0	26.82	17.858	9.664	4825	39	31.15	0.015	0.2	78.2
	230.0	26.76	17.905	9.404	4808	183	33.73	0.073	1.1	78.1
	230.0	26.56	17.793	9.178	4784	318	40.74	0.154	2.4	78.3
	230.0	26.29	17.666	8.918	4741	442	46.07	0.242	3.8	78.4
	230.0	26.03	17.612	8.591	4681	557	48.40	0.321	5.1	78.2
	230.0	25.87	17.564	8.355	4664	663	44.65	0.352	5.6	78.4
	230.0	25.59	17.299	8.271	4642	761	44.60	0.404	6.5	78.9
	230.0	25.16	16.894	8.217	4607	854	48.74	0.495	8.0	79.6
	230.0	24.65	16.464	8.157	4542	940	53.22	0.595	9.8	80.1
	230.0	24.09	15.976	8.140	4481	1019	55.96	0.679	11.3	80.9
	230.0	23.54	15.455	8.183	4400	1091	57.69	0.749	12.7	81.3
	230.0	23.04	14.929	8.238	4331	1159	58.97	0.814	14.0	81.7
	230.0	22.43	14.400	8.321	4243	1222	59.53	0.866	15.2	82.3
	230.0	21.81	13.858	8.441	4146	1279	59.59	0.907	16.3	82.7
	230.0	21.17	13.310	8.586	4041	1332	58.25	0.924	17.1	83.0
	230.0	20.53	12.767	8.755	3937	1380	57.74	0.948	18.0	83.4
	230.0	19.89	12.222	8.949	3827	1424	55.24	0.936	18.3	83.7
	230.0	19.25	11.711	9.158	3710	1466	51.58	0.900	18.1	83.8
	230.0	18.63	11.192	9.380	3600	1502	47.90	0.857	17.7	84.0
	230.0	18.01	10.686	9.617	3482	1536	44.13	0.807	17.3	84.0
	230.0	17.43	10.204	9.859	3368	1568	40.90	0.763	16.9	84.0
	230.0	16.83	9.734	10.105	3250	1597	38.26	0.727	16.7	84.0
	230.0	16.29	9.312	10.353	3137	1624	31.66	0.612	14.6	83.7
	230.0	15.75	8.895	10.603	3026	1648	26.51	0.520	12.8	83.5
	230.0	15.22	8.501	10.854	2912	1671	21.60	0.430	11.0	83.2
	230.0	14.68	8.104	11.116	2796	1693	15.73	0.317	8.5	82.8
	230.0	14.19	7.700	11.384	2677	1714	8.57	0.175	4.9	82.0
	230.0	13.74	7.413	11.615	2574	1733	3.47	0.072	2.1	81.5
	230.0	13.45	7.175	11.792	2501	1745	0.00	0.000	0.0	80.8

DRAWING NO. PAGE 5 of 8 REV.  
**4VAG3BG** -



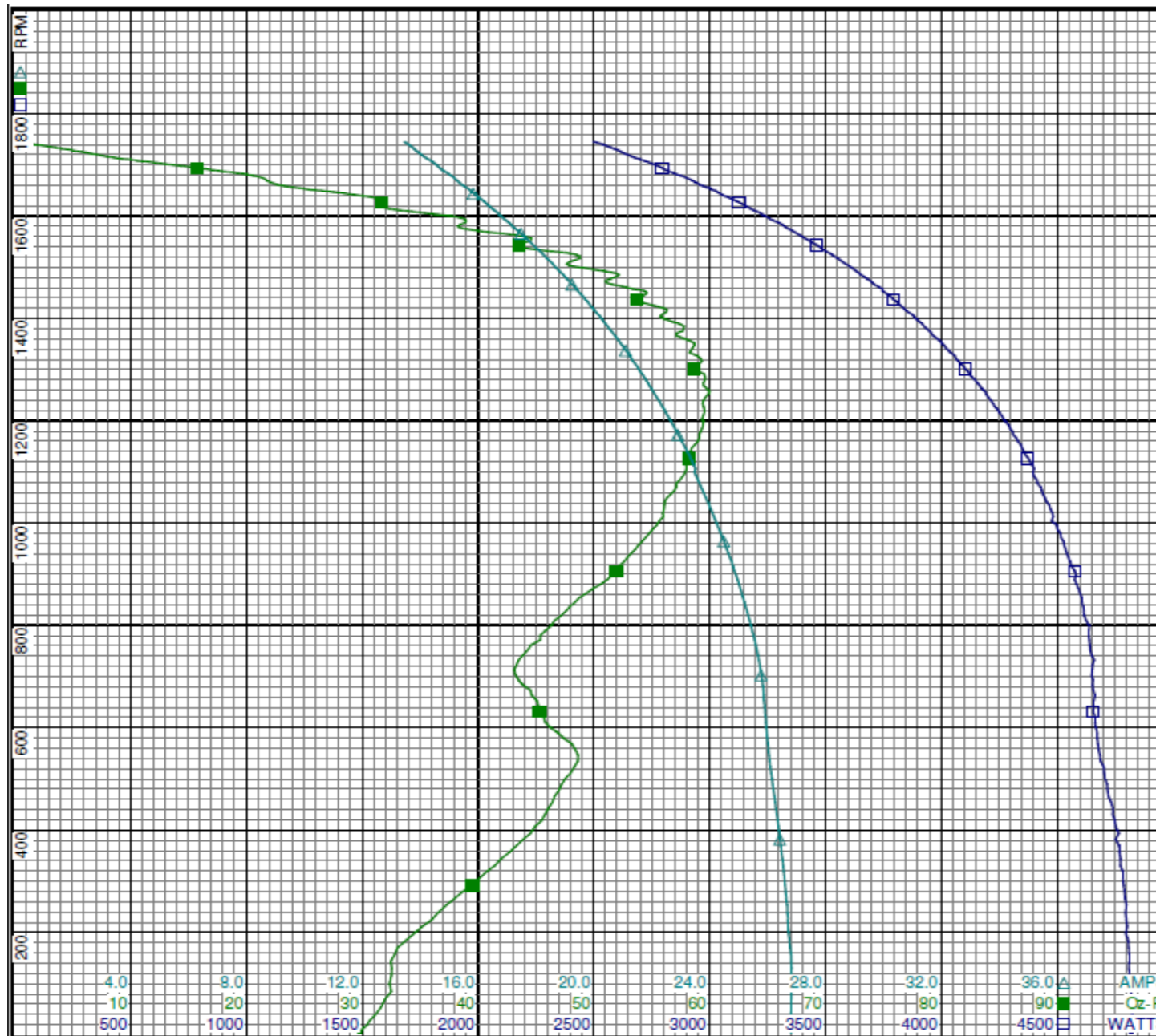
# Performance Data



4VAG3BG

REV.

-



**Curve Descriptions:**

Motor(1) Test 17 Start 230V 60 Hz 4P

- SPEED vs WATTS
- SPEED vs TORQUE
- △ SPEED vs ILine

**Motor Ratings:**

(1) S63CXCSJB8174 ID: 1 of 1

DRAWING NO.	PAGE 6 of 8	REV.
4VAG3BG		-

Dayton Electric Mfg. Co. Lake Forest, IL 60045 USA



# Performance Data



**4VAG3BG**

REV.

-

## Dayton Manufacturing Company

### Motor Description

Model: S63CXCXSJB8174 4VAG3BG  
 Motor ID: 1 of 1  
 Poles: 4  
 Volts: 115/208-230  
 Frequency: 60  
 HP: .75  
 Speed: 1725  
 Phase: 1  
 Protector: CEJ65CS

### Test Conditions

Test Type: Run  
 Test Number: 16  
 Poles: 4  
 Volts: 230  
 Hz: 60  
 Rotation:  
 Special Cond:  
 Speed Conn:  
 TestBoard: Amps Performance Fixture #1  
 Run Cap: 0  
 Start Cap: 0µfd  
 Environment: 20.4 Deg C 28 % RH 993 hPa  
 Tested: 12/1/2015 9:02:11 AM  
 Tested By: Sharp, Gerald  
 Gear Ratio: 1:1  
 Bearing Friction: -0.30 Oz-Ft  
 Windage Torque: -0.99 Oz-Ft

Special Points	Vline (V)	Iline (A)	Watts	RPM	Tq (Oz-ft)	HP	Eff (%)	PF (%)
	230.0	4.13	174	1791	0.00	0.000	0.0	18.3
	230.0	4.25	358	1773	10.80	0.228	47.5	36.6
	230.0	4.63	555	1752	21.97	0.458	61.6	52.2
	230.0	5.09	740	1733	31.45	0.649	65.4	63.2
<b>36.52 OZ-FT</b>	<b>230.0</b>	<b>5.46</b>	<b>851</b>	<b>1722</b>	<b>36.52</b>	<b>0.749</b>	<b>65.6</b>	<b>67.8</b>
<b>0.75 HP</b>	<b>230.0</b>	<b>5.46</b>	<b>852</b>	<b>1722</b>	<b>36.58</b>	<b>0.750</b>	<b>65.6</b>	<b>67.8</b>
	230.0	5.75	926	1713	39.62	0.808	65.1	70.0
<b>42 OZ-FT</b>	<b>230.0</b>	<b>5.95</b>	<b>981</b>	<b>1706</b>	<b>42.00</b>	<b>0.853</b>	<b>64.9</b>	<b>71.7</b>
	230.0	6.42	1112	1692	48.33	0.973	65.3	75.4
	230.0	7.16	1292	1669	56.33	1.119	64.6	78.5
	230.0	7.97	1478	1645	60.81	1.191	60.1	80.6
	230.0	8.80	1661	1620	69.10	1.332	59.8	82.0
	230.0	9.69	1852	1591	72.39	1.371	55.2	83.1
	230.0	10.59	2034	1561	75.41	1.401	51.4	83.6
	230.0	11.50	2213	1527	80.27	1.459	49.2	83.7
	230.0	12.43	2389	1491	83.06	1.474	46.0	83.5
<b>BDT OZ-FT</b>	<b>230.0</b>	<b>13.16</b>	<b>2522</b>	<b>1460</b>	<b>84.18</b>	<b>1.463</b>	<b>43.3</b>	<b>83.3</b>
	230.0	13.35	2552	1452	83.19	1.438	42.0	83.1
	230.0	14.25	2713	1409	81.88	1.373	37.8	82.8
	230.0	15.14	2856	1362	81.18	1.316	34.4	82.0
	230.0	16.01	3006	1311	78.94	1.232	30.6	81.6
	230.0	16.84	3132	1255	76.15	1.138	27.1	80.9
	230.0	17.64	3253	1196	72.00	1.025	23.5	80.2
	230.0	18.40	3355	1131	66.82	0.900	20.0	79.3
	230.0	19.11	3455	1061	61.27	0.774	16.7	78.6
	230.0	19.77	3529	986	54.57	0.640	13.5	77.6
	230.0	20.37	3596	906	47.43	0.511	10.6	76.8
	230.0	20.92	3649	819	39.44	0.384	7.9	75.8
	230.0	21.40	3685	726	32.73	0.283	5.7	74.9
	230.0	21.73	3699	627	28.30	0.211	4.3	74.0
	230.0	21.89	3713	522	28.68	0.178	3.6	73.8
	230.0	22.09	3753	408	24.88	0.121	2.4	73.9
	230.0	22.31	3787	286	17.90	0.061	1.2	73.8
	230.0	22.45	3810	157	7.60	0.014	0.3	73.8

DRAWING NO. PAGE 7 of 8 REV.  
 4VAG3BG -

Dayton Electric Mfg. Co. Lake Forest, IL 60045 USA

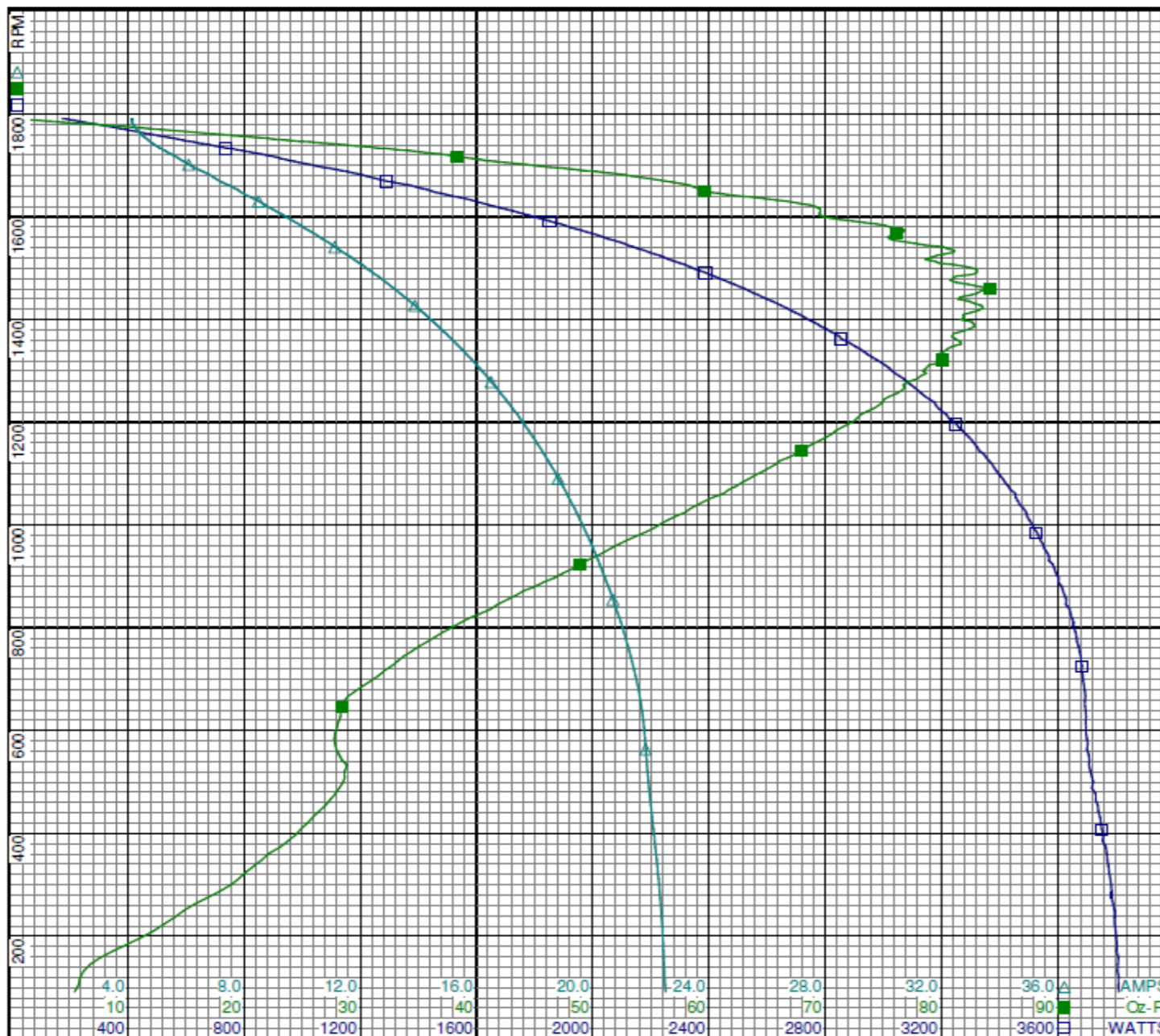
# Performance Data



4VAG3BG

REV.

-



**Curve Descriptions:**

Motor(1) Test 16 Run 230V 60 Hz 4P

- SPEED vs WATTS
- SPEED vs TORQUE
- △ SPEED vs ILine

**Motor Ratings:**

(1) S63CXCSJB8174 ID: 1 of 1

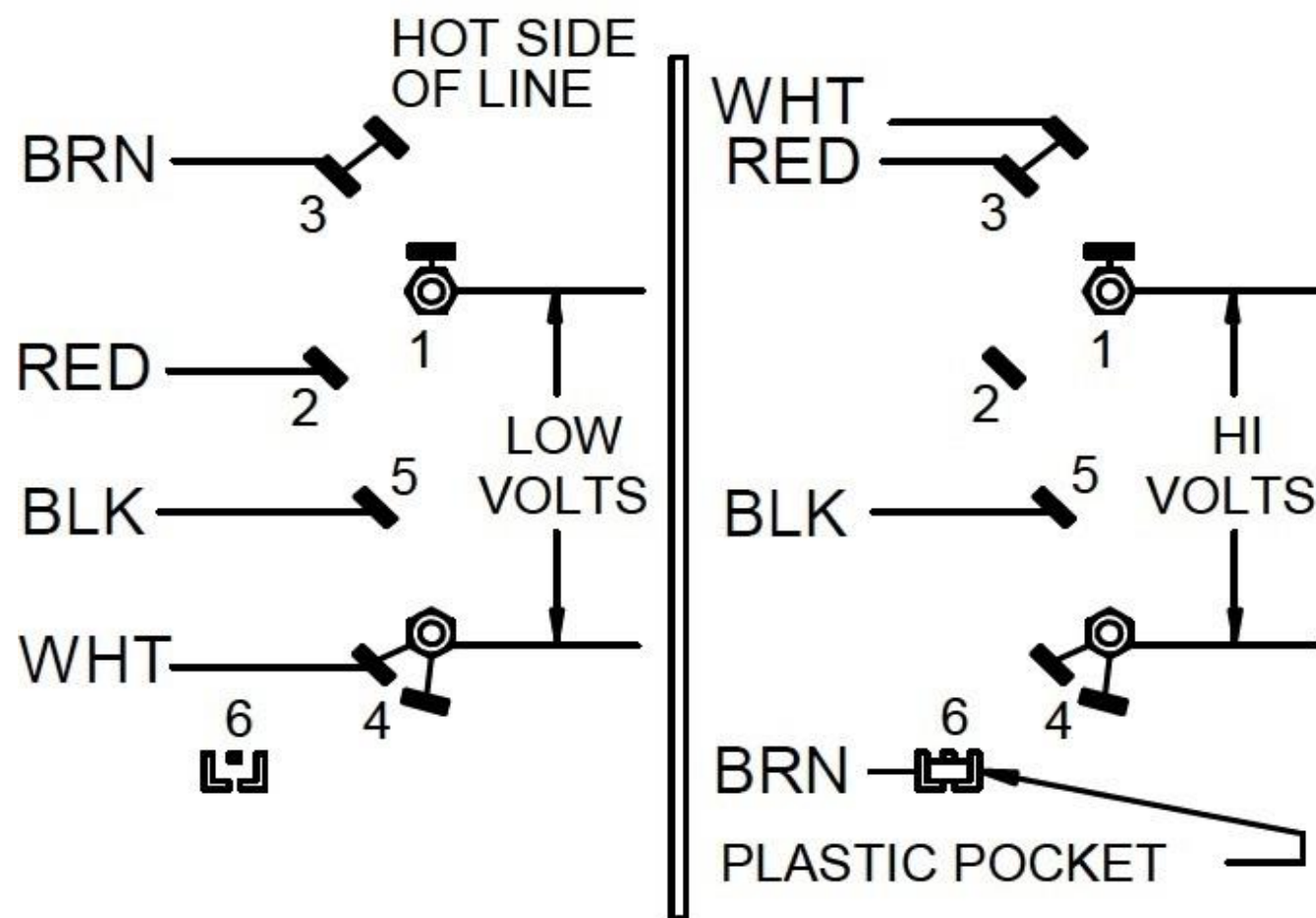
DRAWING NO.	PAGE 8 of 8	REV.
4VAG3BG		-

Dayton Electric Mfg. Co. Lake Forest, IL 60045 USA

4VAG3BG

REV.  
-

## CONNECTIONS



ROTATION IS CCW LEAD END  
TO REVERSE ROTATION  
INTERCHANGE RED & BLK LEADS

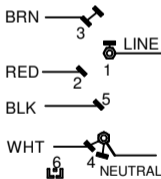
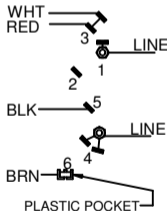
DRAWING NO.	PAGE 1 of 1	REV.
4VAG3BG		-

**Dayton**<sup>®</sup>**BELT DRIVE FAN AND  
BLOWER MOTOR****HP: 3/4**  
**VOLTS: 115/208-230**Part  
No **4VAG3BG****AMPS: 11.8/6.0-6.1****PH: 1****RPM: 1725****HZ: 60****DUTY: CONT****FR: 56****SF: 1.15****INS CL: B****KVA CODE: L****AMB: 60 °C****ENCL: ODP****SFA: 12.9/ 6.0-6.6****THERMALLY PROTECTED: AUTO**MFG. NO. PROT. CODE : 00560AVG. F.L.  
EFF.**MTR REF: S63CXSJB-8174****SF AT 208V IS 1.0**

E37403



258501

**Disconnect Power Before Making Any  
Electrical Connections or Changes****CONNECTIONS****LOW VOLTAGE****HIGH VOLTAGE****ROTATION: CCW LEAD END TO REVERSE  
ROTATION INTERCHANGE  
RED AND BLACK LEADS****Mfd for Dayton Electric Mfg. Co., Lake Forest, IL 60045 USA****Made in Mexico**