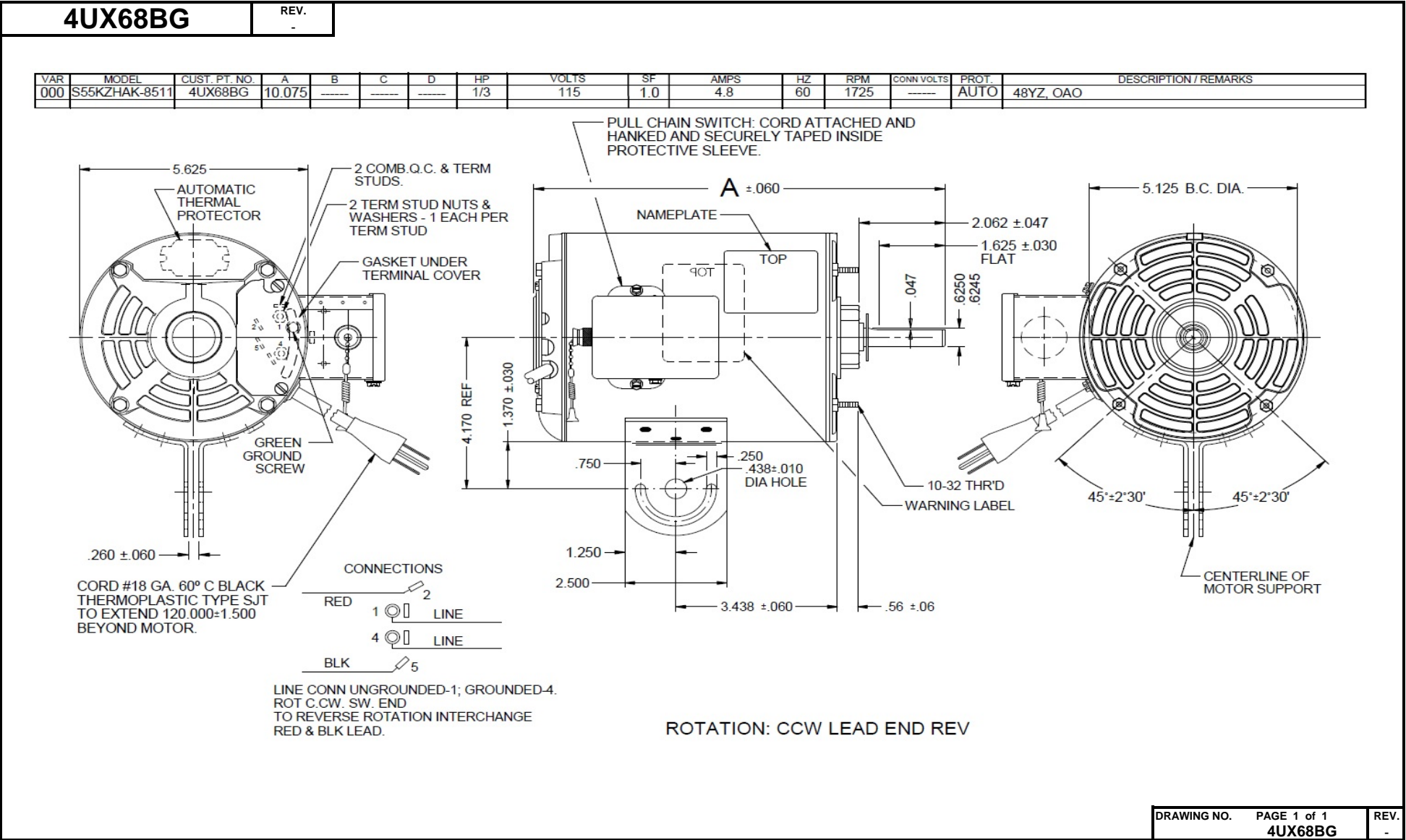


Dimensional Drawing



Performance Data



4UX68BG

REV.
-

MOTOR PERFORMANCE

HP:	1/3								
Poles:	4								
Ambient (°C)	40								
Altitude (FASL):									
No. of Speeds:	1								
Volts:	115	115							
HZ:	60	60							
Service Factor:	1								
Efficiency:	@ Rated Load								
Power Factor:	@ Rated Load								
Amps:	@ No Load								
	@ Rated Load	4.7							
	@ Service Factor	N/A							
	@ Locked Rotor	28.5							
RPM:	@ Rated Load	1743							
Torques:	Breakdown	36.2							
Oz.Ft. / Lb.In.	Locked Rotor	18							
(Circle One)	Pull-Up	13.2							
	Rated Load	16.1							
	Service Factor	N/A							
Watts:	@ Rated Load	368							
KVA Code:									
Temperature Rise:	@ Rated Load	OA0							
	@ Service Factor	N/A							
Thermal Protector:	Trip Temp (°C)	N/A							
Winding Material:	Start (Auxiliary)	AL							
	Run (Main)	AL							
Capacitor(s):	Start (MFD / Volts)	N/A							
	No. of Start Capacitors								
	Run (MFD / Volts)	N/A							
	No. of Run Capacitors								

LOW SPEED PERFORMANCE DATA:

HP:									
Poles:									
Volts:									
HZ:									
Efficiency:	@ Rated Load								
Power Factor:	@ Rated Load								
Amps:	@ No Load								
	@ Rated Load								
	@ Service Factor								
	@ Locked Rotor								
Torques:	Breakdown								
Oz.Ft. / Lb.In.	Locked Rotor								
(Circle One)	Pull-Up								
	Rated Load								
	Service Factor								
Watts:	@ Rated Load								
Temperature Rise:	@ Rated Load								
	@ Service Factor								

DRAWING NO. PAGE 1 of 1
4UX68BG

REV.
-

Dayton Electric Mfg. Co. Lake Forest, IL 60045 USA

Performance Data



4UX68BG

REV.
-

Dayton Manufacturing Company

Motor Description

Model: S055HAK851101 4UX68BG
Motor ID: 1/1
Poles: 4
Volts: 115
Frequency: 60
HP: 1/3
Speed: 1725
Phase: 1
Protector: MEJ36BY

Test Conditions

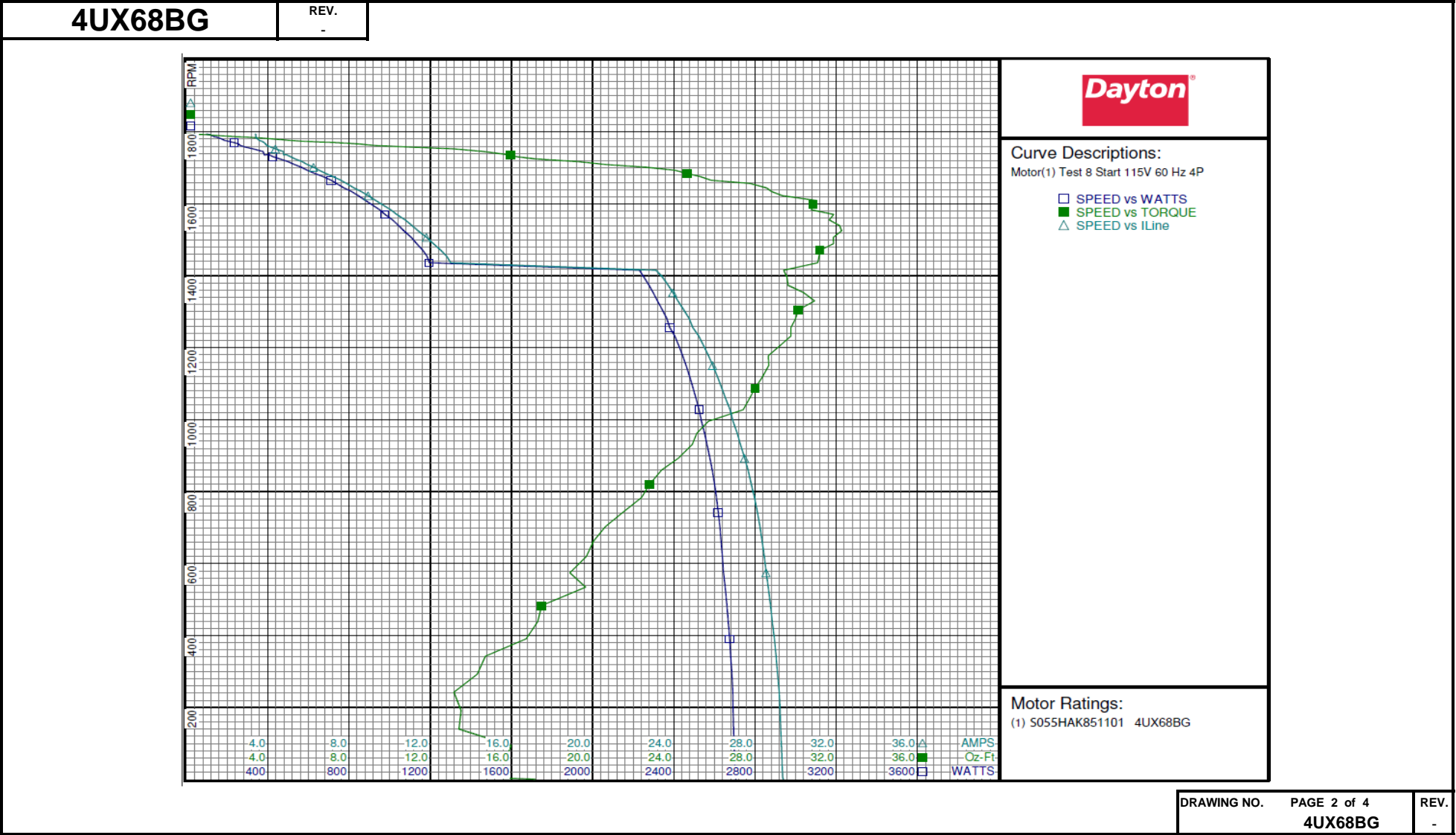
Test Type: Start
Test Number: 8
Poles: 4
Volts: 115
Hz: 60
Rotation:
Special Cond:
Speed Conn:
TestBoard: CMD InLine Three Phase #1 Fixture #1
Run Cap: 0
Start Cap: 0µfd
Environment: 24.3 Deg C 67 % RH 965 hPa
Tested: 10/5/2015 5:59:08 PM
Tested By: Bribiesca, Griselda
Gear Ratio: 1:1
Bearing Friction: -0.37 Oz-Ft
Windage Torque: -1.33 Oz-Ft

Special Points	Vline (V)	Vaux (V)	Vcap (V)	Iline (A)	Watts	RPM	Tq (Oz-ft)	HP	Eff (%)	PF (%)
	115.0	0.0	4.9	29.36	2702	3	15.36	0.001	0.0	80.0
	115.0	1.9	4.9	29.23	2692	191	13.52	0.031	0.9	80.1
PUT OZ-FT	115.0	1.9	4.9	29.18	2690	242	13.17	0.038	1.1	80.1
	115.0	1.9	4.8	29.03	2680	342	14.71	0.060	1.7	80.3
	115.0	1.9	4.8	28.76	2661	483	17.49	0.101	2.8	80.5
	115.0	1.9	4.8	28.45	2639	619	19.69	0.145	4.1	80.7
	115.0	1.9	4.8	28.12	2619	742	21.49	0.190	5.4	81.0
	115.0	1.9	4.8	27.65	2589	859	23.39	0.239	6.9	81.4
	115.0	1.9	4.7	27.12	2552	962	25.13	0.288	8.4	81.8
	115.0	2.0	4.7	26.55	2509	1059	27.73	0.350	10.4	82.2
	115.0	2.0	4.7	25.91	2460	1150	28.67	0.393	11.9	82.5
	115.0	2.0	4.7	25.22	2405	1232	29.76	0.436	13.5	82.9
	115.0	2.0	4.6	24.49	2343	1305	30.13	0.468	14.9	83.2
	115.0	2.0	4.6	23.72	2278	1373	29.62	0.484	15.9	83.5
	115.0	2.1	4.5	13.01	1195	1436	31.09	0.531	33.2	79.9
	115.0	2.1	4.4	12.15	1133	1489	31.87	0.565	37.2	81.1
	115.0	2.1	4.4	11.11	1045	1539	32.16	0.589	42.1	81.8
	115.0	2.1	4.3	10.05	951	1583	30.77	0.580	45.5	82.2
	115.0	2.2	4.2	8.94	845	1623	29.34	0.567	50.0	82.2
	115.0	2.2	4.1	7.87	738	1656	27.75	0.547	55.3	81.5
	115.0	2.2	4.1	6.85	632	1684	24.65	0.494	58.4	80.2
	115.0	2.2	4.0	5.93	530	1709	20.58	0.419	59.0	77.7
	115.0	2.3	3.9	5.12	426	1731	16.24	0.335	58.7	72.4
	115.0	2.3	3.7	4.76	376	1745	14.63	0.304	60.2	68.8
	115.0	2.3	3.6	3.95	263	1762	9.21	0.193	54.8	57.9
	115.0	2.3	3.5	3.70	204	1774	5.66	0.120	43.7	48.1
	115.0	2.3	3.4	3.44	160	1783	3.68	0.078	36.5	40.4
	115.0	2.4	3.2	3.41	123	1789	1.59	0.034	20.5	31.5
	115.0	2.4	3.1	3.38	97	1793	0.00	0.000	0.0	25.1

DRAWING NO. PAGE 1 of 4
4UX68BG REV.
-

Dayton Electric Mfg. Co. Lake Forest, IL 60045 USA

Performance Data



Dayton Electric Mfg. Co. Lake Forest, IL 60045 USA

Performance Data



4UX68BG

REV.
-

Dayton Manufacturing Company

Motor Description

Model: S055HAK851101 4UX68BG
Motor ID: 1/1
Poles: 4
Volts: 115
Frequency: 60
HP: 1/3
Speed: 1725
Phase: 1
Protector: MEJ36BY

Test Conditions

Test Type: Run
Test Number: 7
Poles: 4
Volts: 115
Hz: 60
Rotation:
Special Cond:
Speed Conn:
TestBoard: CMD InLine Three Phase #1 Fixture #1
Run Cap: 0
Start Cap: 0µfd
Environment: 24.3 Deg C 67 % RH 965 hPa
Tested: 10/5/2015 5:49:53 PM
Tested By: Bribiesca, Griselda
Gear Ratio: 1:1
Bearing Friction: -0.44 Oz-Ft
Windage Torque: -1.60 Oz-Ft

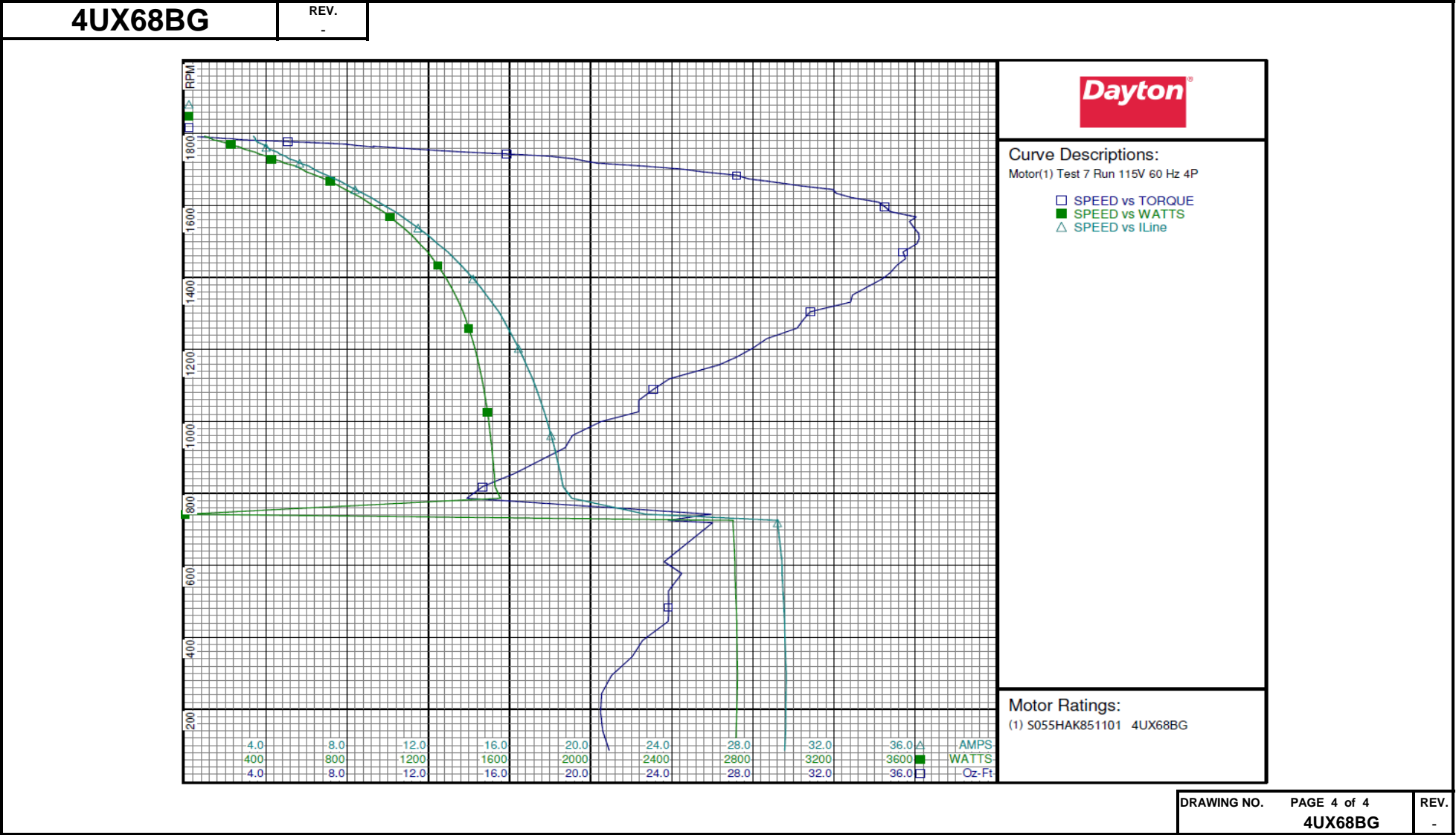
Special Points	Vline (V)	Vaux (V)	Vcap (V)	Iline (A)	Watts	RPM	Tq (Oz-ft)	HP	Eff (%)	PF (%)
	115.0	2.4	3.1	3.37	96	1792	0.00	0.000	0.0	24.7
	115.0	2.4	3.1	3.43	119	1788	1.42	0.030	19.0	30.1
	115.0	2.4	3.1	3.47	139	1782	2.87	0.061	32.6	34.9
	115.0	2.4	3.1	3.63	197	1774	6.36	0.134	50.7	47.3
	115.0	2.4	3.0	4.01	264	1762	9.32	0.195	55.3	57.2
	115.0	2.4	3.0	4.56	346	1748	13.90	0.289	62.3	66.1
0.333 HP	115.0	2.4	3.0	4.68	368	1743	16.05	0.333	67.5	68.3
	115.0	2.4	3.0	5.14	427	1729	19.21	0.395	69.1	72.2
1725 RPM	115.0	2.4	3.0	5.37	456	1725	19.55	0.402	65.7	73.9
	115.0	2.4	3.0	6.10	544	1710	22.50	0.458	62.8	77.7
	115.0	2.4	2.9	7.00	645	1684	27.21	0.545	63.1	80.1
	115.0	2.4	2.9	8.07	759	1654	30.42	0.599	58.9	81.8
	115.0	2.4	2.9	9.18	868	1622	32.86	0.634	54.5	82.2
	115.0	2.4	2.9	10.35	977	1582	34.77	0.655	50.0	82.1
	115.0	2.4	2.9	11.50	1078	1537	35.94	0.658	45.5	81.6
BDT OZ-FT	115.0	2.4	2.9	12.15	1133	1509	36.19	0.650	42.8	81.1
	115.0	2.4	2.8	12.44	1156	1494	36.08	0.642	41.4	80.8
	115.0	2.4	2.8	13.62	1246	1433	35.09	0.599	35.8	79.6
	115.0	2.4	2.8	14.57	1313	1372	33.59	0.549	31.2	78.4
	115.0	2.4	2.7	15.46	1371	1304	30.83	0.479	26.0	77.1
	115.0	2.4	2.7	16.21	1415	1229	28.67	0.420	22.1	75.9
	115.0	2.4	2.6	16.83	1449	1156	26.32	0.362	18.7	74.9
	115.0	2.4	2.6	17.52	1482	1058	22.37	0.282	14.2	73.6
	115.0	2.5	2.5	18.05	1506	961	19.10	0.218	10.8	72.5
	115.0	2.5	2.5	18.51	1524	855	16.24	0.165	8.1	71.6
	115.0	2.5	2.4	22.73	0	741	25.94	0.229	0.0	0.0
	115.0	2.5	2.0	29.42	2712	609	23.62	0.171	4.7	80.1
	115.0	2.5	2.0	29.53	2718	483	23.84	0.137	3.8	80.0
	115.0	2.5	1.9	29.61	2722	346	22.04	0.091	2.5	79.9
	115.0	2.5	0.0	29.62	2720	192	20.49	0.047	1.3	79.8

DRAWING NO. PAGE 3 of 4
4UX68BG

REV.
-

Dayton Electric Mfg. Co. Lake Forest, IL 60045 USA

Performance Data

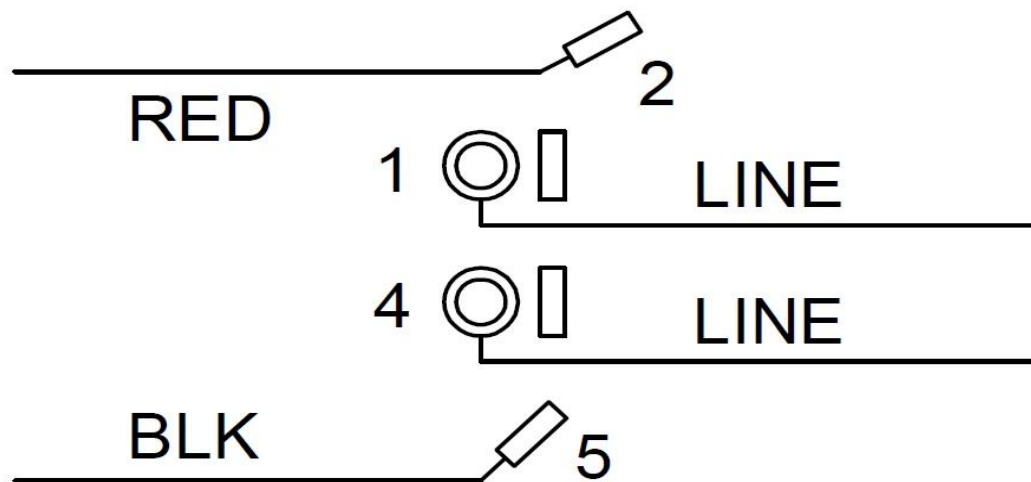


4UX68BG

REV.

-

CONNECTIONS



LINE CONN UNGROUNDED-1; GROUNDED-4.
ROT C.CW. SW. END
TO REVERSE ROTATION INTERCHANGE
RED & BLK LEAD.

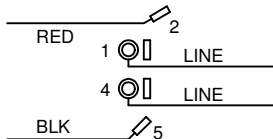
DRAWING NO.	PAGE 1 of 1	REV.
4UX68BG		-

Dayton[®]

PEDESTAL FAN MOTOR

HP: 1/3**VOLTS:** 115**AMPS:** 4.8**RPM:** 1725**DUTY:** CONT**SF:** 1.0**KVA CODE:** M**ENCL:** OAO**THERMALLY PROTECTED:** AUTO**MFG. NO.** ☐ ☐ **PROT. CODE** ☐ 04290 **AVG. F.L.
EFF.****MTR REF:** S55KZHAK-8511**PH:** 1**HZ:** 60**FR:** 48YZ**INS CL:** B**AMB:** 40 °C**SFA:** 4.8**Part
No** 4UX68BG**Disconnect Power Before Making Any Electrical
Connections or Changes**

CONNECTIONS



LINE CONN UNGROUNDED-1; GROUNDED-4.
ROT C.W. SW. END
TO REVERSE ROTATION INTERCHANGE
RED & BLK LEAD.

UL[®]
E37403**CSA**[®]
258501

Mfd for Dayton Electric Mfg. Co., Lake Forest, IL 60045 USA

Made in Mexico