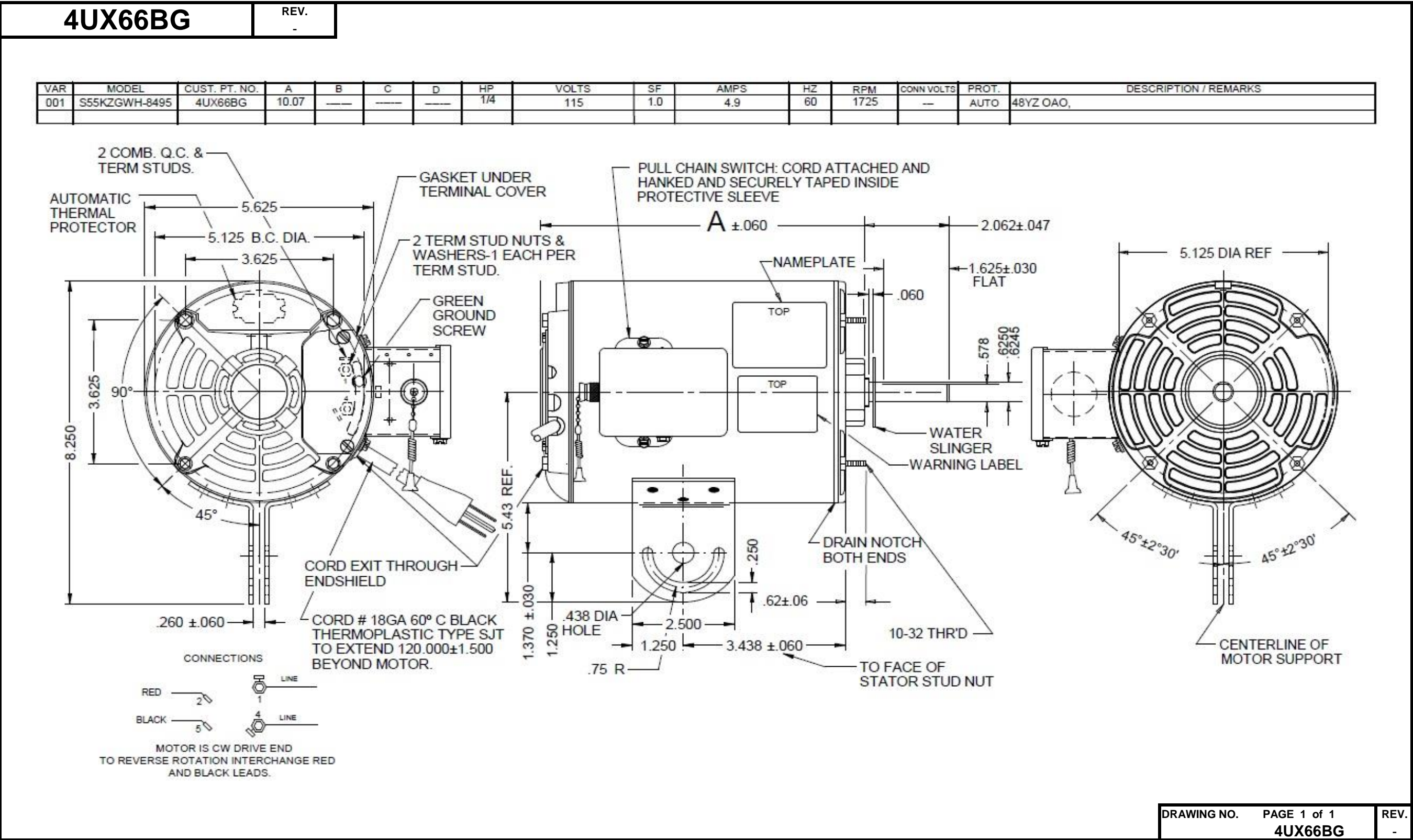


Dimensional Drawing



DRAWING NO.

PAGE 1 of 1

REV.

4UX66BG

-

# Performance Data



**4UX66BG**

REV.  
-

## SPLIT-PHASE & CAPACITOR START MOTOR PERFORMANCE

<b>HP:</b>	1/4						
<b>Poles:</b>	4						
<b>Ambient (°C):</b>	40						
<b>Altitude (FASL):</b>							
<b>No. of Speeds:</b>	1						
<b>Volts:</b>	115	115					
<b>HZ:</b>	60	60					
<b>Service Factor:</b>	1						
<b>Efficiency:</b>	@ Rated Load	53.7					
<b>Power Factor:</b>	@ Rated Load	65.2					
<b>Amps:</b>	@ No Load						
	@ Rated Load	4.7					
	@ Service Factor	4.7					
	@ Locked Rotor				17		
<b>RPM:</b>	@ Rated Load				1742		
<b>Torques:</b>	Breakdown	28.7					
	Locked Rotor	20.4					
	Pull-Up	19.6					
	Rated Load	12.2					
	Service Factor	12.2					
<b>Watts:</b>	Rated Load	351					
<b>KVA Code:</b>	J	J					
<b>Temperature Rise:</b>	@ Rated Load	OAO					
	@ Service Factor	-					
<b>Thermal Protector:</b>	Trip Temp (°C)	128.1					
<b>Winding Material:</b>	Start (Auxiliary)	Al					
	Run (Main)	Al					
<b>Capacitor(s):</b>	Start (MFD / Volts)				NA		
	No. of Start Capacitors						
	Run (MFD / Volts)				NA		
	No. of Run Capacitors						

### LOW SPEED PERFORMANCE DATA:

<b>HP:</b>							
<b>Poles:</b>							
<b>Volts:</b>							
<b>HZ:</b>							
<b>Efficiency:</b>	@ Rated Load						
<b>Power Factor:</b>	@ Rated Load						
<b>Amps:</b>	@ No Load						
	@ Rated Load						
	@ Service Factor						
	@ Locked Rotor						
<b>Torques:</b>	BreakDown						
	Locked Rotor						
	Pull-Up						
	Rated Load						
	Service Factor						
<b>Watts:</b>	@ Rated Load						
<b>Temperature Rise:</b>	@ Rated Load						
	@ Service Factor						

DRAWING NO. PAGE 1 of 1  
4UX66BG

REV.  
-

**Dayton Electric Mfg. Co. Lake Forest, IL 60045 USA**

# Performance Data



**4UX66BG**

REV.  
-

## Dayton Manufacturing Company

### Motor Description

Model: S055GWH8495 4UX66BG  
Motor ID: 1  
Poles: 4  
Volts: 115  
Frequency: 60  
HP: 1/4  
Speed: 1725  
Phase: 1  
Protector: CEJ64CY

### Test Conditions

Test Type: Start  
Test Number: 3  
Poles: 4  
Volts: 115  
Hz: 60  
Rotation:  
Special Cond:  
Speed Conn:  
TestBoard: Amtps Performance Fixture #4  
Run Cap: 0  
Start Cap: 0µfd  
Environment: 20.6 Deg C 52 % RH 993 hPa  
Tested: 8/15/2012 1:54:40 PM  
Tested By: Sharp, Gerald  
Gear Ratio: 1:1  
Bearing Friction: -0.62 Oz-Ft  
Windage Torque: -2.24 Oz-Ft

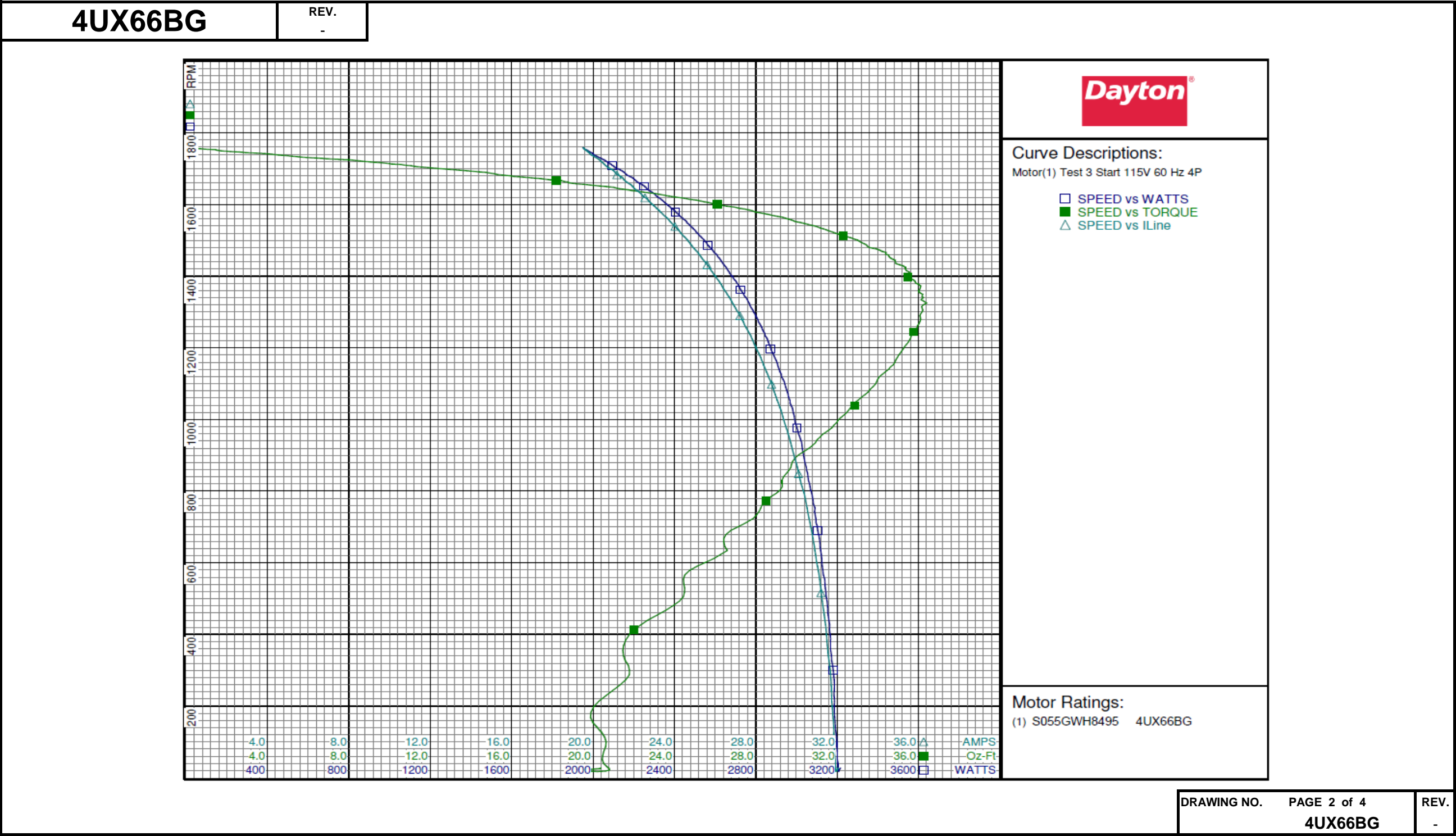
Special Points	Vline (V)	Iline (A)	Imain (A)	Iaux (A)	Watts	RPM	Tq (Oz-ft)	HP	Eff (%)	PF (%)
	115.0	32.04	16.964	15.851	3217	26	20.36	0.006	0.1	87.3
PUT OZ-FT	115.0	31.98	16.946	15.817	3209	19	19.61	0.004	0.1	87.3
	115.0	31.92	16.954	15.738	3205	32	20.65	0.008	0.2	87.3
	115.0	31.82	16.988	15.519	3190	154	19.99	0.037	0.9	87.2
	115.0	31.66	16.985	15.255	3180	300	21.79	0.078	1.8	87.4
	115.0	31.40	16.905	14.977	3159	440	22.69	0.119	2.8	87.5
	115.0	31.11	16.789	14.702	3132	566	24.51	0.165	3.9	87.6
	115.0	30.77	16.644	14.435	3108	679	26.54	0.214	5.1	87.8
	115.0	30.41	16.464	14.161	3078	784	28.75	0.268	6.5	88.0
	115.0	30.00	16.206	13.947	3043	875	29.76	0.310	7.6	88.2
	115.0	29.58	15.963	13.711	3010	959	31.30	0.357	8.9	88.5
	115.0	29.15	15.700	13.486	2973	1039	32.87	0.407	10.2	88.7
	115.0	28.68	15.416	13.260	2933	1112	33.99	0.450	11.4	88.9
	115.0	28.19	15.112	13.036	2888	1179	35.02	0.491	12.7	89.1
	115.0	27.69	14.796	12.854	2845	1239	35.71	0.527	13.8	89.3
	115.0	27.18	14.456	12.683	2796	1295	36.10	0.556	14.8	89.4
	115.0	26.66	14.100	12.544	2745	1344	36.17	0.578	15.7	89.5
	115.0	26.14	13.735	12.441	2695	1389	35.74	0.591	16.4	89.6
	115.0	25.61	13.349	12.369	2643	1432	35.05	0.597	16.9	89.7
	115.0	25.10	12.967	12.318	2592	1469	34.20	0.598	17.2	89.8
	115.0	24.59	12.575	12.311	2542	1503	32.83	0.587	17.2	89.9
	115.0	24.09	12.174	12.335	2489	1535	31.15	0.569	17.1	89.8
	115.0	23.60	11.765	12.377	2433	1564	29.30	0.546	16.7	89.6
	115.0	23.12	11.387	12.430	2385	1589	27.21	0.515	16.1	89.7
	115.0	22.67	10.975	12.525	2334	1614	24.76	0.476	15.2	89.5
	115.0	22.21	10.558	12.639	2282	1637	22.22	0.433	14.1	89.3
	115.0	21.77	10.139	12.770	2232	1657	19.17	0.378	12.6	89.1
	115.0	21.36	9.721	12.910	2181	1678	16.15	0.323	11.0	88.8
	115.0	20.97	9.350	13.036	2134	1696	13.41	0.271	9.5	88.5
	115.0	20.54	8.976	13.162	2085	1712	10.14	0.207	7.4	88.3
	115.0	20.14	8.445	13.405	2030	1731	5.93	0.122	4.5	87.7
	115.0	19.73	8.084	13.541	1981	1747	2.16	0.045	1.7	87.3
	115.0	19.51	7.755	13.700	1949	1758	0.00	0.000	0.0	86.9

DRAWING NO. PAGE 1 of 4 REV.  
4UX66BG -

Dayton Electric Mfg. Co. Lake Forest, IL 60045 USA



Performance Data



# Performance Data



**4UX66BG**

REV.  
-

## Dayton Manufacturing Company

### Motor Description

Model: S055GWH8495 4UX66BG  
Motor ID: 1  
Poles: 4  
Volts: 115  
Frequency: 60  
HP: 1/4  
Speed: 1725  
Phase: 1  
Protector: CEJ64CY

### Test Conditions

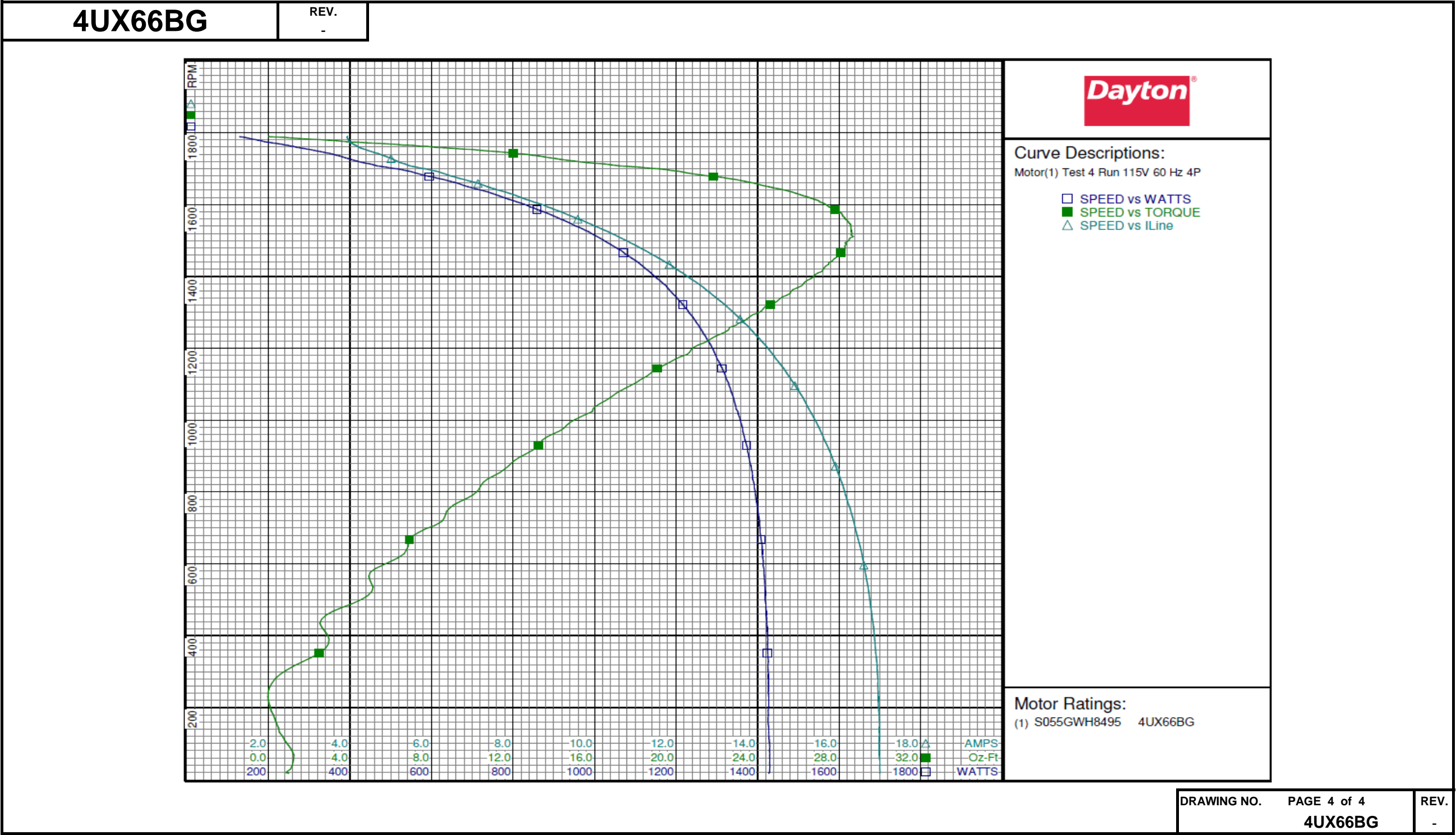
Test Type: Run  
Test Number: 4  
Poles: 4  
Volts: 115  
Hz: 60  
Rotation:  
Special Cond:  
Speed Conn:  
TestBoard: Amtps Performance Fixture #4  
Run Cap: 0  
Start Cap: 0µfd  
Environment: 20.6 Deg C 52 % RH 993 hPa  
Tested: 8/15/2012 1:53:34 PM  
Tested By: Sharp, Gerald  
Gear Ratio: 1:1  
Bearing Friction: -0.67 Oz-Ft  
Windage Torque: -2.36 Oz-Ft

Special Points	Vline (V)	Iline (A)	Watts	RPM	Tq (Oz-ft)	HP	Eff (%)	PF (%)
	115.0	3.928	129.0	1789	0.00	0.000	0.0	28.5
	115.0	3.997	199.4	1773	4.34	0.092	34.2	43.4
	115.0	4.214	268.5	1759	8.19	0.171	47.6	55.4
0.25 HP	115.0	4.640	345.1	1743	12.05	0.250	54.0	64.7
	115.0	4.683	350.9	1742	12.17	0.252	53.6	65.2
12.2 OZ-FT	115.0	4.687	351.4	1742	12.20	0.253	53.7	65.2
1725 RPM	115.0	5.064	403.0	1725	14.39	0.295	54.7	69.2
	115.0	5.187	423.9	1719	15.31	0.313	55.1	71.1
16.4 OZ-FT	115.0	5.338	447.9	1713	16.40	0.334	55.7	73.0
	115.0	5.930	525.6	1697	19.49	0.394	55.9	77.1
	115.0	6.677	615.5	1673	22.52	0.448	54.4	80.2
	115.0	7.525	708.0	1644	25.02	0.490	51.6	81.8
	115.0	8.411	799.8	1611	26.97	0.517	48.2	82.7
	115.0	9.262	884.2	1575	28.11	0.527	44.5	83.0
	115.0	10.078	962.1	1536	28.58	0.523	40.5	83.0
BDT OZ-FT	115.0	10.578	1006.4	1510	28.69	0.516	38.2	82.7
	115.0	10.876	1032.3	1494	28.29	0.503	36.3	82.5
	115.0	11.619	1094.9	1448	27.73	0.478	32.6	81.9
	115.0	12.289	1148.3	1399	26.76	0.446	29.0	81.3
	115.0	12.904	1195.7	1347	25.43	0.408	25.5	80.6
	115.0	13.467	1236.4	1293	23.75	0.366	22.1	79.8
	115.0	13.989	1272.4	1233	21.91	0.322	18.9	79.1
	115.0	14.455	1300.7	1170	19.96	0.278	15.9	78.2
	115.0	14.879	1328.3	1104	18.02	0.237	13.3	77.6
	115.0	15.254	1347.0	1032	15.92	0.196	10.8	76.8
	115.0	15.608	1367.5	953	13.67	0.155	8.5	76.2
	115.0	15.912	1383.9	872	11.77	0.122	6.6	75.6
	115.0	16.185	1395.8	782	9.72	0.091	4.8	75.0
	115.0	16.423	1406.0	687	7.36	0.060	3.2	74.4
	115.0	16.627	1415.4	586	5.22	0.036	1.9	74.0
	115.0	16.776	1420.2	479	3.64	0.021	1.1	73.6
	115.0	16.889	1424.4	364	2.79	0.012	0.6	73.3
	115.0	16.955	1426.3	244	-0.02	0.000	0.0	73.1
	115.0	16.985	1427.8	119	0.70	0.001	0.1	73.1
	115.0	17.000	1428.0	18	0.95	0.000	0.0	73.0

DRAWING NO.	PAGE 3 of 4	REV.
	4UX66BG	-

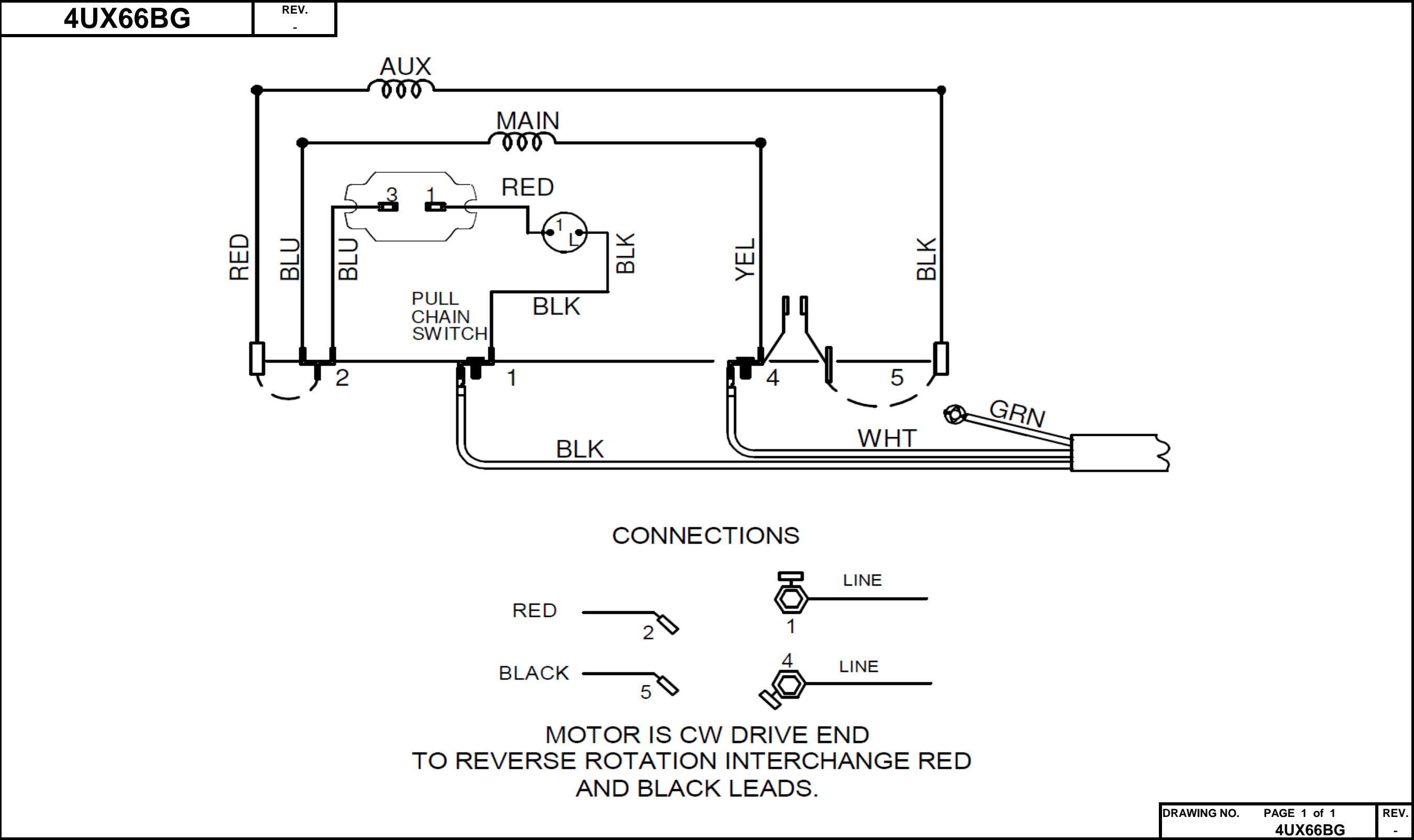
Dayton Electric Mfg. Co. Lake Forest, IL 60045 USA

Performance Data

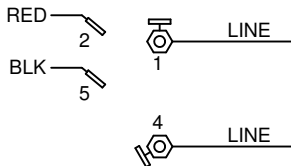


Dayton Electric Mfg. Co. Lake Forest, IL 60045 USA

Wiring Diagram



Dayton Electric Mfg. Co. Lake Forest, IL 60045 USA

**Dayton**®**PEDESTAL FAN MOTOR****HP:** 1/4**VOLTS:** 115**AMPS:** 4.9**RPM:** 1725**DUTY:** CONT**SF:** 1.0**KVA CODE:** P**ENCL:** OAO**THERMALLY PROTECTED:** AUTOMFG. NO. PROT. CODE: AVG. F.L.  
EFF.**MTR REF:** S55KZGWH-8495**PH:** 1**HZ:** 60**FR:** 48YZ**INS CL:** B**AMB:** 40 °C**SFA:** 4.9Part  
No **4UX66BG****Disconnect Power Before Making Any  
Electrical Connections or Changes****CONNECTIONS****MOTOR IS CW DRIVE END  
TO REVERSE ROTATION  
INTERCHANGE  
RED AND BLACK LEADS****Mfd for Dayton Electric Mfg. Co., Lake Forest, IL 60045 USA****Made in Mexico**