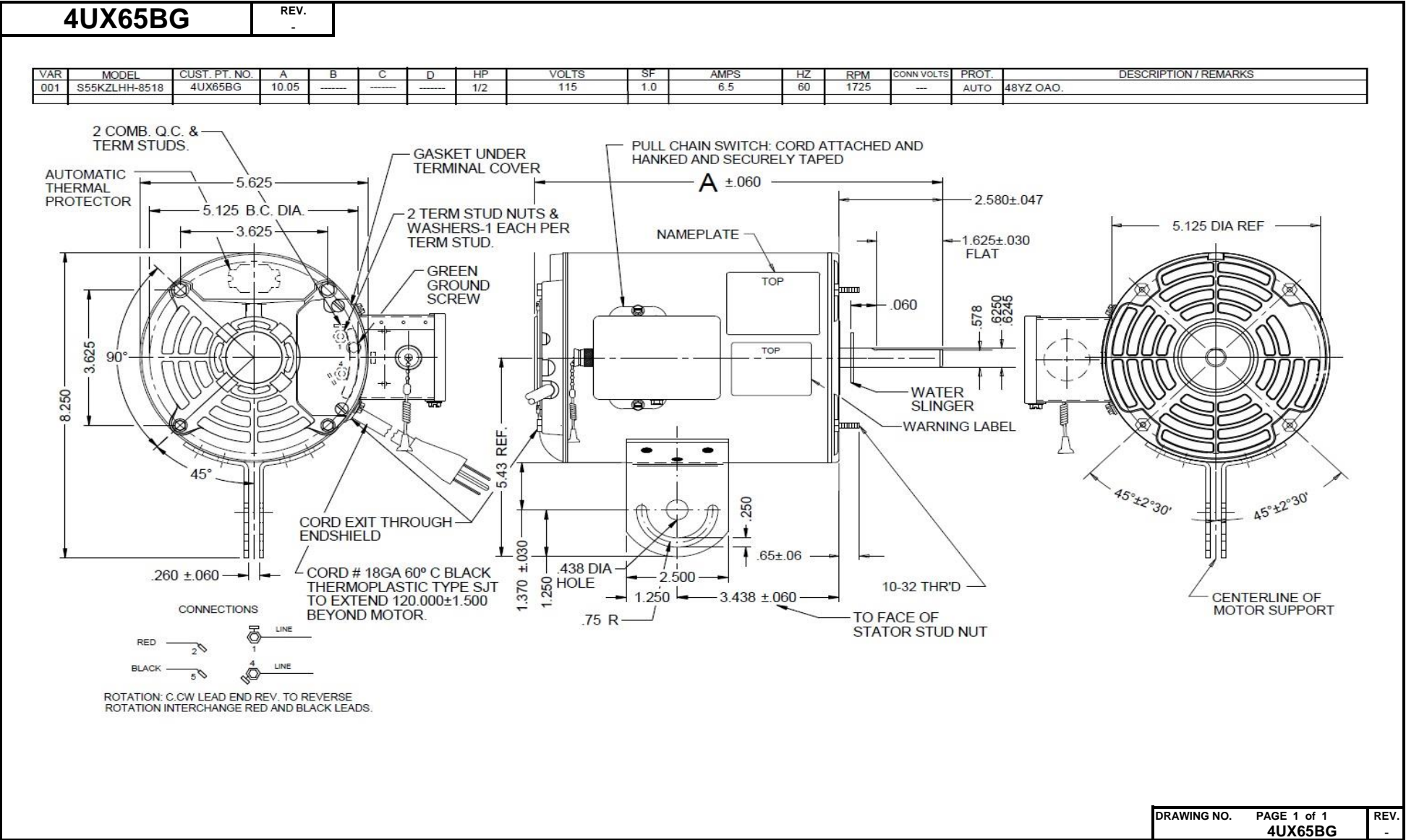


Dimensional Drawing



DRAWING NO.

PAGE 1 of 1

4UX65BG

REV.

-

4UX65BG

REV.

-

SPLIT-PHASE & CAPACITOR START MOTOR PERFORMANCE

HP:	1/2							
Poles:	4							
Ambient (°C):	40							
Altitude (FASL):								
No. of Speeds:	1							
Volts:	115	115						
HZ:	60	60						
Service Factor:	1							
Efficiency:	@ Rated Load	65.1						
Power Factor:	@ Rated Load	76.3						
Amps:	@ No Load							
	@ Rated Load	6.5						
	@ Service Factor	6.5						
	@ Locked Rotor							
RPM:	@ Rated Load						35	
Torques:	Breakdown	44.2						
	Locked Rotor	23.4						
	Pull-Up	23.4						
	Rated Load	24.4						
	Service Factor	24.4						
Watts:	Rated Load	571						
KVA Code:	K	K						
Temperature Rise:	@ Rated Load	-						
	@ Service Factor	-						
Thermal Protector:	Trip Temp (°C)	-						
Winding Material:	Start (Auxiliary)	Al						
	Run (Main)	Cu						
Capacitor(s):	Start (MFD / Volts)						NA	
	No. of Start Capacitors							
	Run (MFD / Volts)						NA	
	No. of Run Capacitors							

LOW SPEED PERFORMANCE DATA:

HP:								
Poles:								
Volts:								
HZ:								
Efficiency:	@ Rated Load							
Power Factor:	@ Rated Load							
Amps:	@ No Load							
	@ Rated Load							
	@ Service Factor							
	@ Locked Rotor							
Torques:	BreakDown							
	Locked Rotor							
	Pull-Up							
	Rated Load							
	Service Factor							
Watts:	@ Rated Load							
Temperature Rise:	@ Rated Load							
	@ Service Factor							

 DRAWING NO. PAGE 1 of 1
 4UX65BG

 REV.
 -

Performance Data



4UX65BG

REV.
-

Dayton Manufacturing Company

Motor Description

Model: S055LHH8515 4UX65BG
Motor ID: 1
Poles: 4
Volts: 115
Frequency: 60
HP: 1/2
Speed: 1725
Phase: 1
Protector: CEJ64CY

Test Conditions

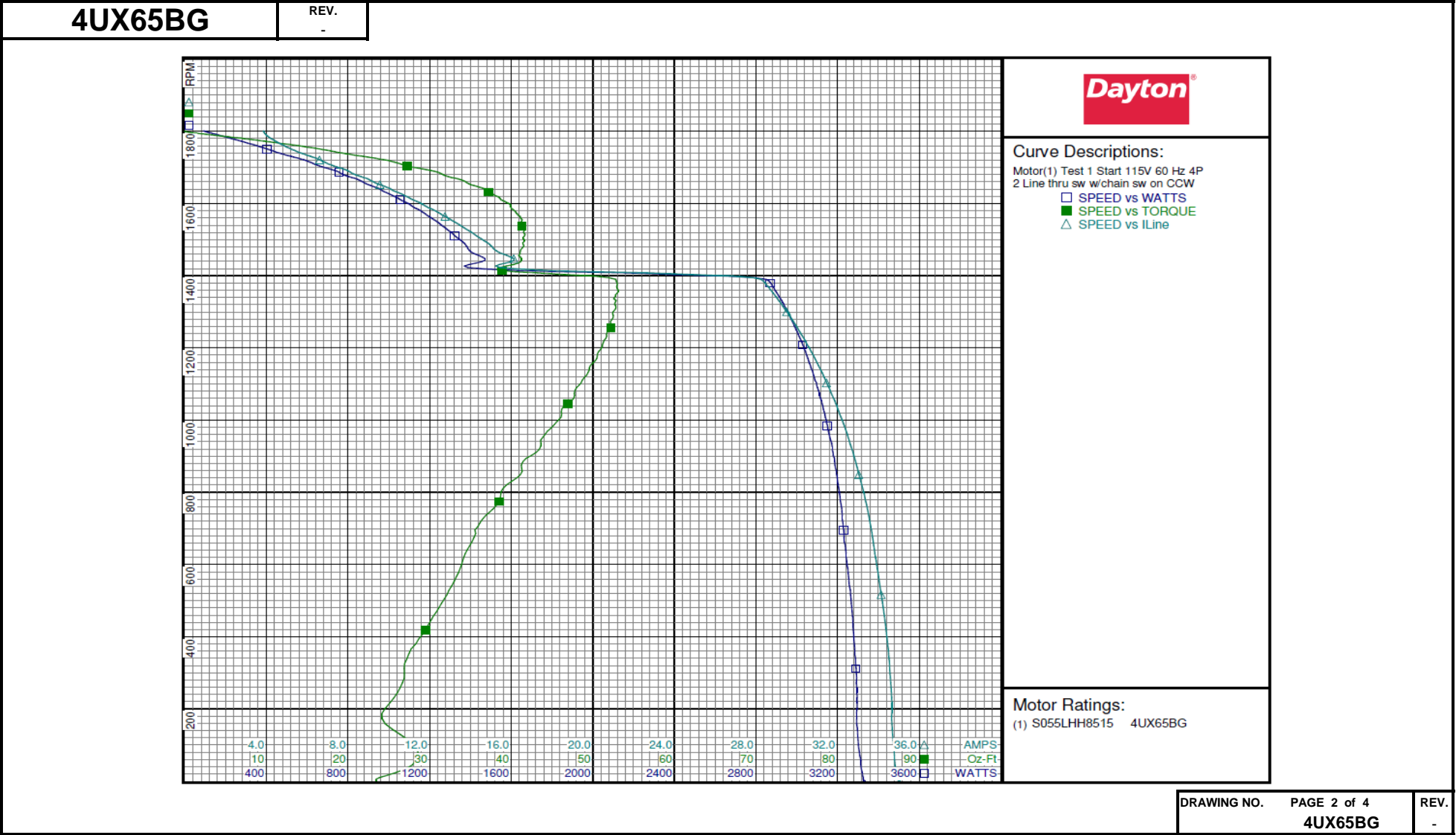
Test Type: Start Run Cap: 0
Test Number: 1 Start Cap: 0µfd
Poles: 4 Environment: 21.3 Deg C 59 % RH 995 hPa
Volts: 115 Tested: 6/10/2016 1:38:44 PM
Hz: 60 Tested By: Sharp, Gerald
Rotation: CCW Gear Ratio: 1:1
Special Cond: 2 Line thru sw w/chain sw on Bearing Friction: -0.51 Oz-Ft
Speed Conn: Windage Torque: -1.81 Oz-Ft
TestBoard: Amtps Performance Fixture #3

Special Points	Vline (V)	Iline (A)	Watts	RPM	Tq(Oz-ft)	HP	Eff (%)	PF (%)
	115.0	35.03	3332	0	23.40	0.000	0.0	82.7
PUT OZ-FT	115.0	34.96	3328	2	23.39	0.001	0.0	82.8
	115.0	34.84	3316	33	27.01	0.011	0.2	82.8
	115.0	34.66	3292	188	24.16	0.054	1.2	82.6
	115.0	34.52	3288	338	27.19	0.109	2.5	82.8
	115.0	34.23	3269	481	31.14	0.178	4.1	83.0
	115.0	33.89	3244	609	34.04	0.247	5.7	83.2
	115.0	33.56	3223	724	36.43	0.314	7.3	83.5
	115.0	33.13	3200	831	40.10	0.397	9.2	84.0
	115.0	32.66	3173	927	43.61	0.481	11.3	84.5
	115.0	32.11	3138	1016	46.14	0.558	13.3	85.0
	115.0	31.52	3098	1096	48.31	0.630	15.2	85.5
	115.0	30.88	3054	1171	50.48	0.703	17.2	86.0
	115.0	30.21	3006	1238	51.65	0.761	18.9	86.5
	115.0	29.51	2955	1300	52.49	0.812	20.5	87.1
	115.0	28.78	2898	1356	53.15	0.858	22.1	87.6
	115.0	22.76	2161	1407	43.24	0.724	25.0	82.6
	115.0	15.98	1458	1451	41.11	0.710	36.3	79.4
	115.0	14.72	1359	1495	41.60	0.740	40.6	80.3
	115.0	13.62	1270	1535	41.43	0.757	44.5	81.1
	115.0	12.53	1179	1571	40.71	0.761	48.2	81.8
	115.0	11.48	1083	1603	39.38	0.751	51.8	82.0
	115.0	10.36	978	1632	37.22	0.723	55.2	82.1
	115.0	9.26	873	1659	34.44	0.680	58.1	82.0
	115.0	8.23	767	1682	31.39	0.629	61.1	81.0
	115.0	7.19	648	1706	26.88	0.546	62.9	78.4
	115.0	6.25	532	1728	22.39	0.461	64.6	74.0
	115.0	5.26	412	1748	16.90	0.352	63.7	68.1
	115.0	4.55	297	1769	10.94	0.230	57.8	56.7
	115.0	4.01	172	1788	3.88	0.083	35.7	37.4
	115.0	3.85	91	1801	0.00	0.000	0.0	20.5

DRAWING NO. PAGE 1 of 4
4UX65BG REV.
-

Dayton Electric Mfg. Co. Lake Forest, IL 60045 USA

Performance Data



Performance Data



4UX65BG

REV.
-

Dayton Manufacturing Company

Motor Description

Model: S055LHH8515 4UX65BG
Motor ID: 1
Poles: 4
Volts: 115
Frequency: 60
HP: 1/2
Speed: 1725
Phase: 1
Protector: CEJ64CY

Test Conditions

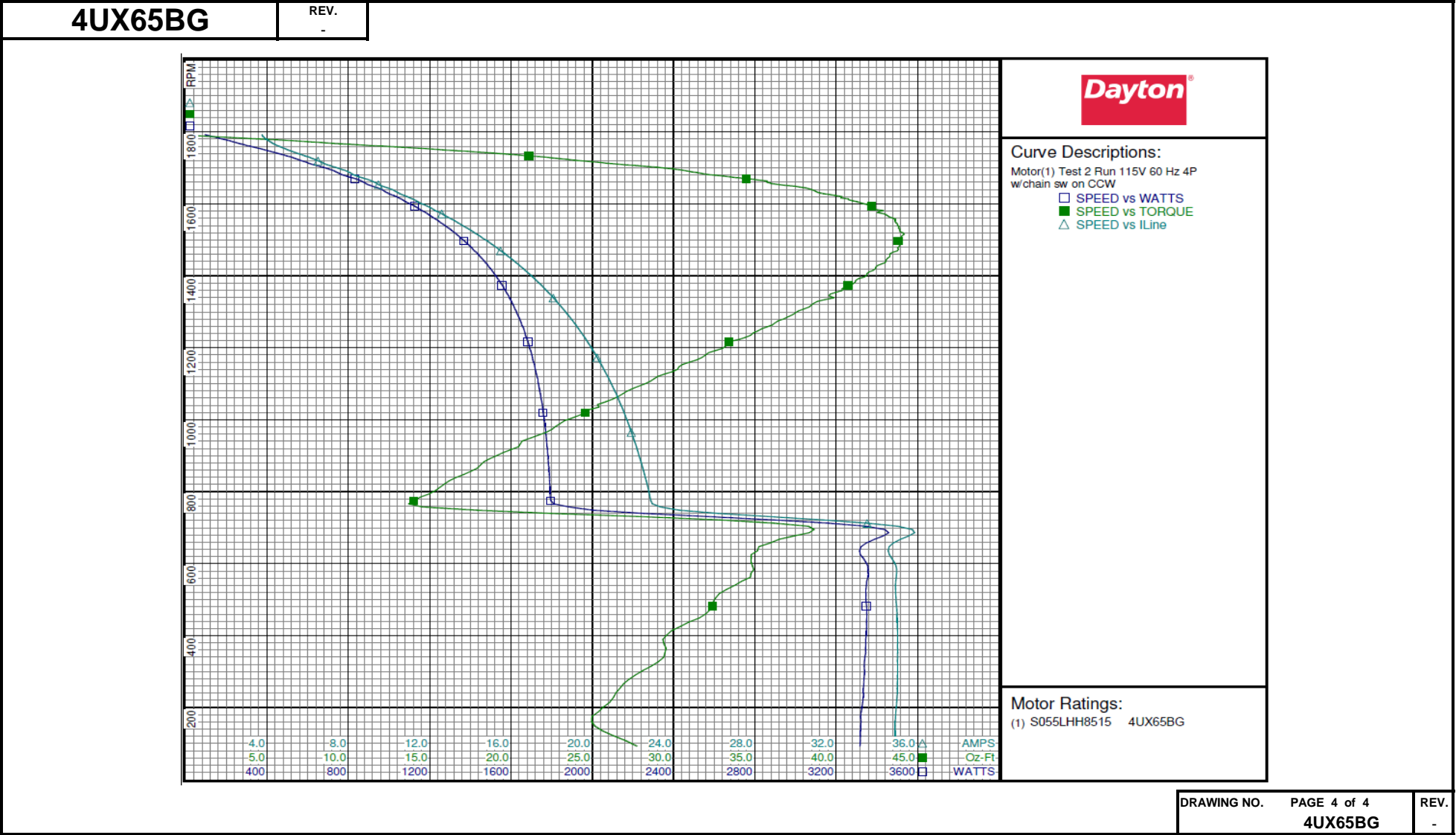
Test Type: Run
Test Number: 2
Poles: 4
Volts: 115
Hz: 60
Rotation: CCW
Special Cond: w/chain sw on
Speed Conn:
TestBoard: Amtps Performance Fixture #3
Run Cap: 0
Start Cap: 0µfd
Environment: 21.4 Deg C 58 % RH 995 hPa
Tested: 6/10/2016 12:39:28 PM
Tested By: Sharp, Gerald
Gear Ratio: 1:1
Bearing Friction: -0.51 Oz-Ft
Windage Torque: -1.92 Oz-Ft

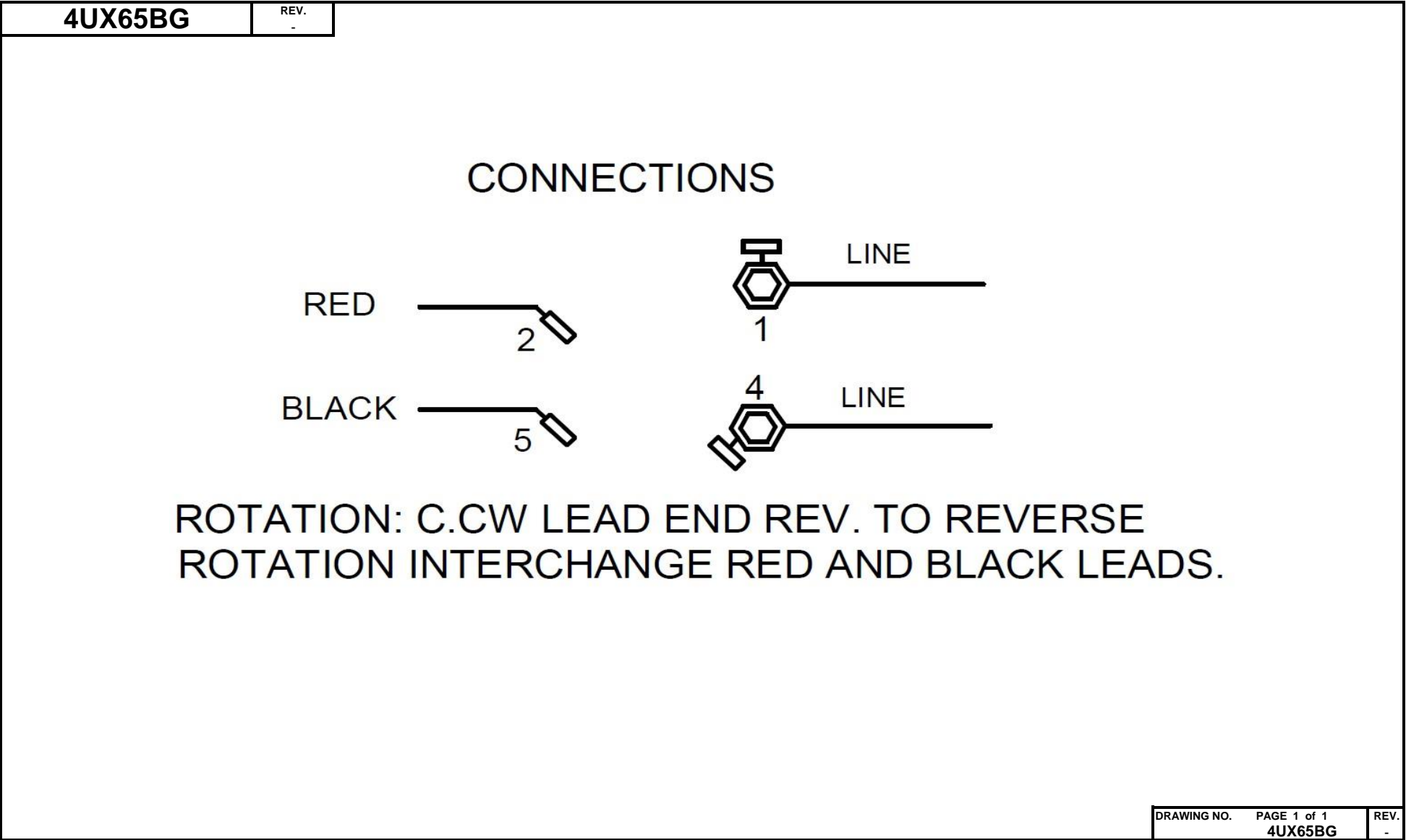
Special Points	Vline (V)	Iline (A)	Watts	RPM	Tq(Oz-ft)	HP	Eff (%)	PF (%)
	115.0	3.74	93	1792	0.00	0.000	0.0	21.7
	115.0	4.14	231	1772	7.52	0.159	51.3	48.5
	115.0	4.93	374	1752	15.15	0.316	63.1	66.0
5.8 AMPS	115.0	5.80	490	1734	20.80	0.429	65.3	73.5
	115.0	5.96	508	1731	21.66	0.446	65.5	74.1
1725 RPM	115.0	6.24	540	1725	23.00	0.472	65.3	75.2
24.38 OZ-FT	115.0	6.51	571	1719	24.38	0.499	65.1	76.3
0.5 HP	115.0	6.52	573	1719	24.44	0.500	65.1	76.4
	115.0	6.87	618	1710	26.57	0.541	65.3	78.2
	115.0	7.98	738	1688	31.13	0.626	63.2	80.4
	115.0	9.04	854	1665	35.24	0.699	61.0	82.1
	115.0	10.05	956	1641	38.35	0.749	58.4	82.7
	115.0	11.14	1058	1614	40.73	0.782	55.2	82.6
	115.0	12.17	1150	1584	42.34	0.799	51.8	82.2
	115.0	13.20	1240	1553	43.64	0.807	48.6	81.7
	115.0	14.23	1326	1518	44.14	0.798	44.9	81.0
BDT OZ-FT	115.0	14.33	1332	1515	44.17	0.796	44.6	80.8
	115.0	15.20	1399	1481	43.88	0.774	41.3	80.0
	115.0	16.15	1468	1441	43.05	0.738	37.5	79.0
	115.0	17.06	1529	1396	41.74	0.694	33.9	77.9
	115.0	17.91	1582	1349	39.63	0.636	30.0	76.8
	115.0	18.72	1628	1297	37.49	0.579	26.5	75.6
	115.0	19.47	1669	1241	34.90	0.515	23.0	74.5
	115.0	20.17	1702	1179	31.95	0.449	19.7	73.4
	115.0	20.81	1731	1113	28.80	0.382	16.4	72.3
	115.0	21.39	1754	1042	25.32	0.314	13.4	71.3
	115.0	21.92	1769	965	22.17	0.255	10.7	70.2
	115.0	22.39	1783	883	18.35	0.193	8.1	69.2
	115.0	22.80	1792	794	15.00	0.142	5.9	68.3
	115.0	35.03	3347	703	38.30	0.321	7.1	83.1
	115.0	34.85	3345	603	34.77	0.250	5.6	83.5
	115.0	34.95	3347	493	32.42	0.190	4.2	83.3
	115.0	35.02	3345	376	29.41	0.132	2.9	83.1
	115.0	35.00	3334	253	26.69	0.080	1.8	82.8
	115.0	34.90	3320	121	26.31	0.038	0.9	82.7

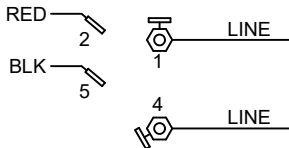
DRAWING NO.	PAGE 3 of 4	REV.
	4UX65BG	-

Dayton Electric Mfg. Co. Lake Forest, IL 60045 USA

Performance Data





Dayton[®]**PEDESTAL FAN MOTOR****HP:** 1/2**VOLTS:** 115**AMPS:** 6.5**RPM:** 1725**DUTY:** CONT**SF:** 1.0**KVA CODE:** N**ENCL:** OAO**THERMALLY PROTECTED:** AUTOMFG. NO. PROT. CODE: 00310 AVG. F.L.
EFF.**MTR REF:** S55KZLHH-8518Part
No **4UX65BG****PH:** 1**HZ:** 60**FR:** 48YZ**INS CL:** B**AMB:** 40 °C**SFA:** 6.5**Disconnect Power Before Making Any
Electrical Connections or Changes****CONNECTIONS****ROTATION:** C.CW LEAD END REV.
TO REVERSE ROTATION INTERCHANGE
RED & BLACK LEADS.**Mfd for Dayton Electric Mfg. Co., Lake Forest, IL 60045 USA** **Made in Mexico**