



4PE14

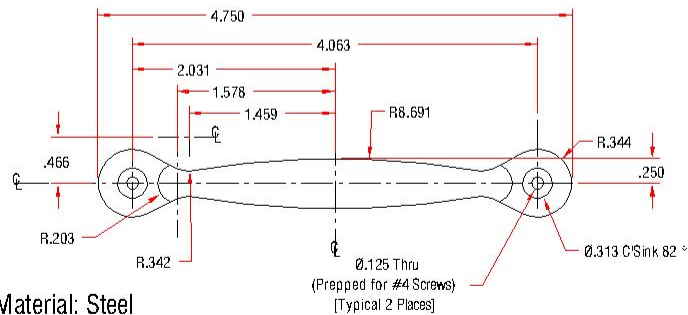
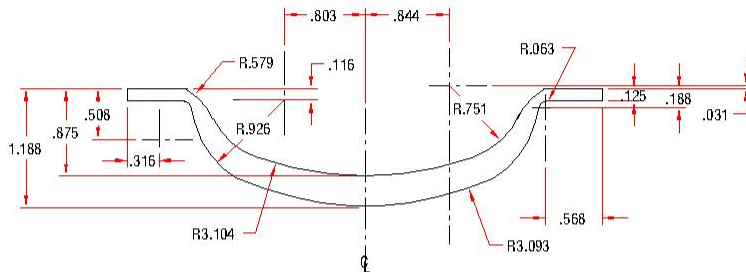
4-3/4" Door Pull, Zinc Plated Finish with Screws

Hardware Included:

Philips Head Screws 2 - #4x1/2



- Notes:
1) Unless noted all dimensions $\pm .030$ "
2) Part is symmetrical about the center line.
3) Countersinks and thru holes $\pm .008$ "



Material: Steel
Finish: Zinc Plated