

Single Control Cast Lavatory Faucets

TECK[®]
COMMERCIAL

DELTA[®]

SPECIFICATION FOR 22C101: (EXAMPLE)

- **CAST BRASS** centerset faucet
- Single control, 102mm (4") centers
- Polished chrome-plated finish
- Ceramic cartridge with rotational limit stop
- Metal hold-down package
- Vandal resistant 89mm (3 1/2")
ADA compliant lever handle with color index and... with... (add product variation required) with... (add outlet required)

SPECIFICATION FOR 22C601: (EXAMPLE)

- **CAST BRASS** single control lavatory faucet
- Single hole mount
- Metal hold-down package
- Polished chrome-plated finish
- Ceramic cartridge with rotational limit stop
- Vandal resistant 89mm (3 1/2")
ADA compliant lever handle with color index, and... with... (add product variation required) with... (add outlet required)

22C101



22C601



Engineer/Architect Approval

Model Specified:

Approval:

Date:

MODEL NUMBER EXAMPLE:

Configurations vary, see below for availability.

22C151

Variation

- 0 = 4" Less pop-up, with pop-up hole
- 1 = 4" Less pop-up, no pop-up hole
- 3 = 4" with metal pop-up
- 4 = 4" with open grid strainer
- 5 = 4" with ADA offset open grid strainer
- 6 = Single hole, less pop-up, no pop-up hole
- 8 = Single hole with metal pop-up
- 9 = Single hole with open grid strainer




Outlet

- 0 = Vandal resistant aerator outlet
- 2 = Vandal resistant laminar outlet
- 3 = Vandal resistant aerator
- 4 = Standard aerator outlet
- 5 = Vandal resistant spray outlet
- 9 = Vandal resistant spray outlet

- ☉ 1.5 gpm (5.7 L/min)
- ☉ 1.5 gpm (5.7 L/min)
- ☉ 1.5 gpm (5.7 L/min)
- ☉ 1.5 gpm (5.7 L/min)
- ☉ 0.5 gpm (1.9 L/min)
- ☉ 0.35 gpm (1.32 L/min)

Handle

- 1 = 3 1/2" (89 mm) lever

AVAILABLE MODELS 		VARIATIONS							
		0 Centerset Less Pop-up (with Pop-up Hole) 4" (102mm)	1 Centerset Less Pop-up (No Pop-up Hole) 4" (102mm)	3 Centerset with Metal Pop-up 4" (102mm)	4 Centerset with Open Grid Strainer 4" (102mm)	5 Centerset with ADA Offset Grid Strainer 4" (102mm)	6 Single Hole Mount Less Pop-up (No Pop-up Hole)	8 Single Hole Mount with Metal Pop-up	9 Single Hole Mount with Open Grid Strainer (No Pop-up Hole)
HANDLE	1 ADA Compliant Lever Handle 3.5" (89mm)  	22C001 22C021 22C041 22C051	22C101 22C121 22C131 22C141 22C151 22C191	22C301 22C321 22C331 22C341 22C351	22C401 22C451	22C531 22C551	22C601 22C621 22C631 22C641 22C651 22C691	22C801 22C831 22C851	22C901 22C951

Refer to www.specselect.com for individual models.

Flow Rates are at 60 PSI.
Note: Use this page front and back as a product submittal sheet.

Delta reserves the right (1) to make changes in specifications and materials, and (2) to change or discontinue models, both without notice or obligation. Dimensions are for reference only. See current full-line price book or www.specselect.com for finish options and product availability.



DSP-22C Rev. H

Single Control Cast Lavatory Faucets

TECK
COMMERCIAL

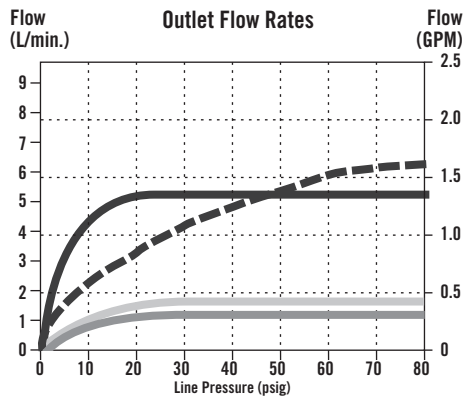
DELTA

APPROVALS:

- CSA certified
- Complies to ASME A112.18.1/CSA B125.1
- Complies to ASME A112.18.6 for Flex Connector Models
-  Indicates compliance to ICC/ANSI A117.1
-  Outlet options 0, 2, 3 and 4 are EPA WaterSense listed
- Verified compliant with 0.25% weighted average Pb content regulations

(Contact Delta Representative for State and/or Local Approvals.)

FLOW RATE vs PRESSURE

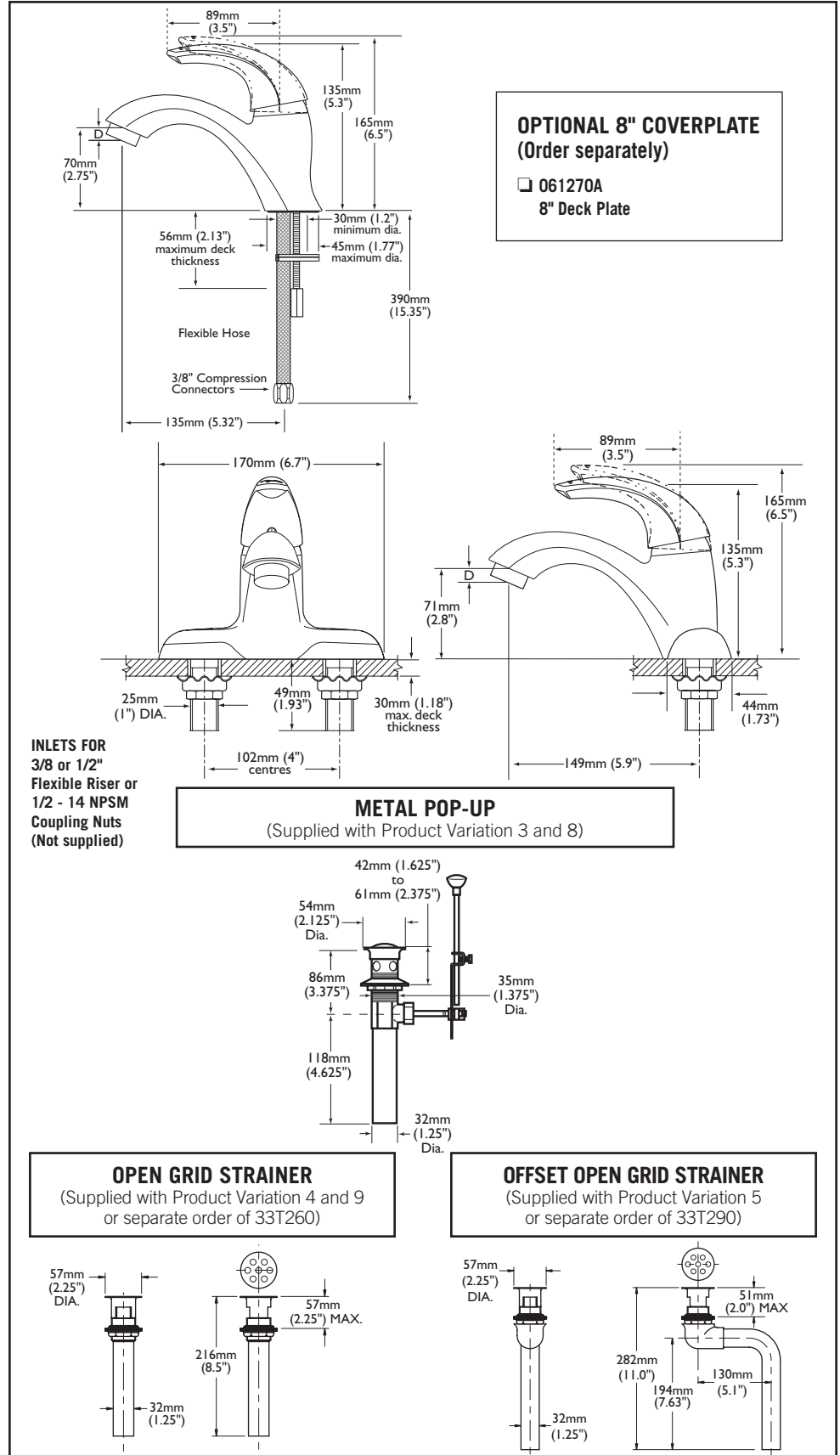


Spout Outlets

- No. 0 & 2 Outlet
- No. 3 & 4 Aerator
- No. 5 Outlet
- No. 9 Outlet

OUTLET NO.	"D"	
	mm	in.
0	7	0.28
2	11	0.45
3	11	0.45
4	11	0.45
5	11	0.45
9	11	0.45

Note: Measurements may vary ± 6mm (0.25")



Refer to www.specselect.com for individual models.

Note: Use this page front and back as a product submittal sheet.