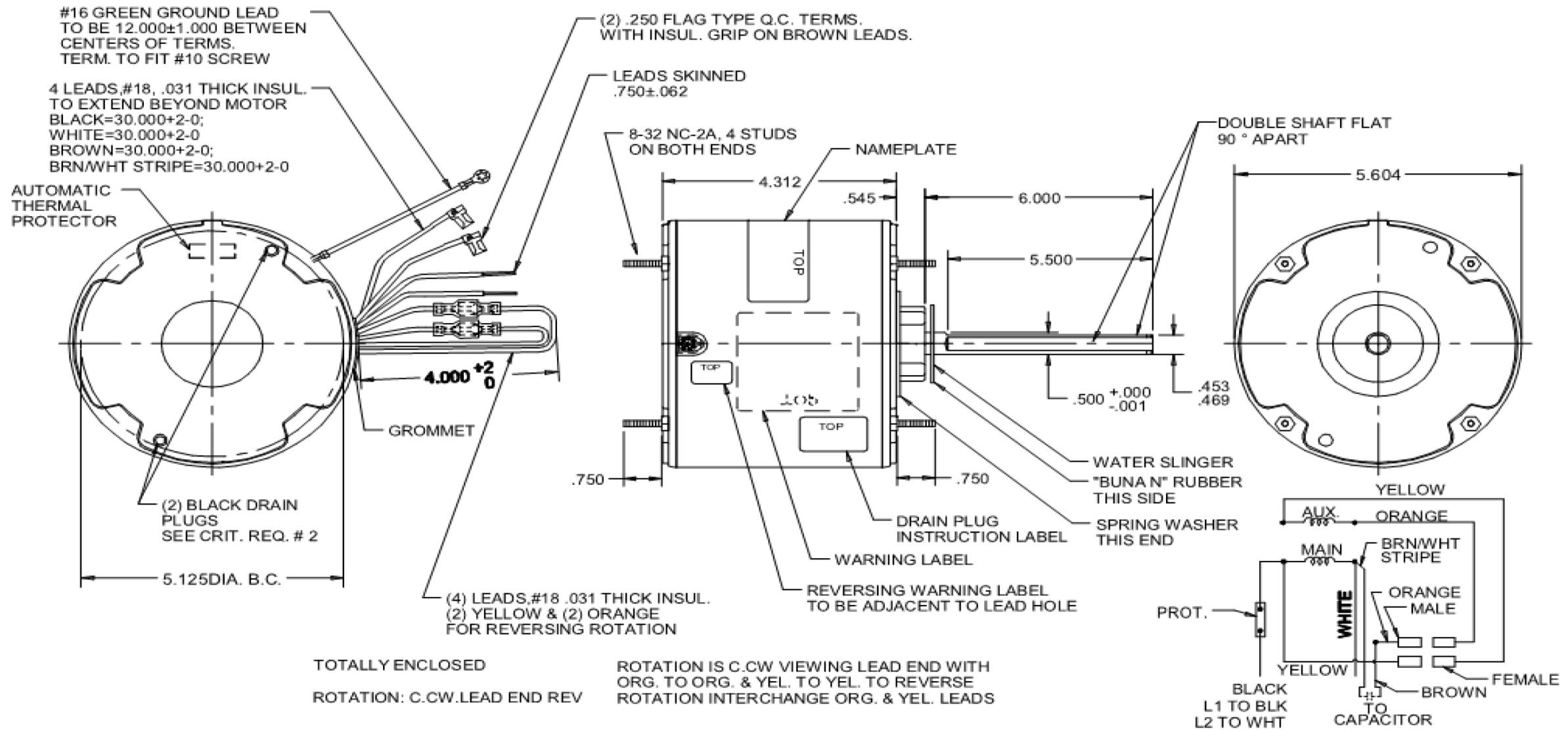


Dimensional Drawing

4M261BJ

REV.
-

MODEL	REF	CUSTOMER	HP	VOLTS	AMPS	HZ	RPM	ROTATION	CUSTOMER PN	DESCRIPTION / REMARKS
K55HXRHM-2147	E40972	DAYTON	1/6	208-230	1.3	60	1075	C.C.W. LEAD END REV	4M261BJ	BALL BEARING



DIMENSIONS UNITS, INCHES

DRAWING NO.	PAGE 1 of 1	REV.
4M261BJ		-

4M261BJ

REV.

-

SHADED-POLE & PSC MOTOR PERFORMANCE

HP:	1/6							
Poles:	4							
Ambient (°C):	60							
Altitude (FASL):	1000							
No. of Speeds:	1							
HIGH SPEED								
Volts:	208-230	115	208	230	277	460	100	200
HZ:	60	60	60	60	60	60	50	50
Service Factor:	1.0							
Efficiency:	@ Rated Load		61.6	60.9				
Power Factor:	@ Rated Load		88.6	89.6				
Amps:	@ No Load							
	@ Rated Load		1.2	1.3				
	@ Locked Rotor							
RPM:	@ Rated Load		1075	1075				
Torques: Oz.Ft. / Lb.In. (Circle One)	Breakdown		16.0	19.3				
	Locked Rotor			4.3				
	Pull-Up							
	Rated Load		14.2	17.6				
	Service Factor		1	1				
Watts:	Rated Load		220	275				
Temperature Rise:	@ Rated Load							
Thermal Protector:	Trip Temp (°C)		140~150	140~150				
Winding Material:	Start (Auxiliary)		AL	AL				
	Run (Main)		AL	AL				
Capacitor:	Run (MFD / Volts)	3.0 MFD	370V					
	No. of Run Capacitors	1						

MEDIUM-HIGH SPEED

HP:	1/6							
Volts:	208-230	115	208	230	277	460	100	200
HZ:	60	60	60	60	60	60	50	50
Efficiency:	@ Rated Load							
Power Factor:	@ Rated Load							
Amps:	@ No Load							
	@ Rated Load							
	@ Locked Rotor							
Torques: Oz.Ft. / Lb.In. (Circle One)	Breakdown							
	Locked Rotor							
	Pull-Up							
	Rated Load							
	Service Factor							
Watts:	Rated Load							
Temperature Rise:	@ Rated Load							

DRAWING NO. PAGE 1 of 2
4M261BJ

REV.
-



4M261BJ

REV.

-

SHADED-POLE & PSC MOTOR PERFORMANCE

MEDIUM-LOW SPEED

HP:	1/6							
Volts:	208-230	115	208	230	277	460	100	200
HZ:	60	60	60	60	60	60	50	50
Efficiency:	@ Rated Load							
Power Factor:	@ Rated Load							
Amps:	@ No Load							
	@ Rated Load							
Torques: Oz.Ft. / Lb.In. (Circle One)	Breakdown							
	Locked Rotor							
	Pull-Up							
	Rated Load							
Watts:	Rated Load							
Temperature Rise:	@ Rated Load							
Watts:	Rated Load							
Temperature Rise:	@ Rated Load							
Thermal Protector:	Trip Temp (°C)							
Winding Material:	Start (Auxiliary)							
	Run (Main)							

LOW SPEED

HP:	1/6							
Volts:	208-230	115	208	230	277	460	100	200
HZ:	60	60	60	60	60	60	50	50
Efficiency:	@ Rated Load							
Power Factor:	@ Rated Load							
Amps:	@ No Load							
	@ Rated Load							
Torques: Oz.Ft. / Lb.In. (Circle One)	Breakdown							
	Locked Rotor							
	Pull-Up							
	Rated Load							
Watts:	Rated Load							
Temperature Rise:	@ Rated Load							

Notes:

DRAWING NO. PAGE 2 of 2
4M261BJ

REV.

-

Dayton Electric Mfg. Co. Lake Forest, IL 60045 USA

Performance Data



4M261BJ

REV.
-

Dayton Manufacturing Company

Filtered

Motor Description

Model: 4M261BJ
 Motor ID: 1 of 3
 Poles: 6
 Volts: 208-230
 Frequency: 60
 HP: 1/6
 Speed: 1075
 Phase: 1
 Protector: 7AM036-A5

Test Conditions

Test Type: Run
 Test Number: 3
 Poles: 6
 Volts: 230
 Hz: 60
 Rotation: CCW
 Special Cond:
 Speed Conn: HI
 TestBoard: NMQC Plotter Fixture #1
 Run Cap: 3
 Start Cap: 0µfd
 Environment:
 Tested: 5/16/2015 6:46:10 AM
 Tested By: Liu, Bingmin
 Gear Ratio: 1:1
 Bearing Friction: -0.07 Oz-Ft
 Windage Torque: -0.32 Oz-Ft

Special Points	Vline (V)	Vaux (V)	Vcap (V)	Iline (A)	Imain (A)	Iaux (A)	Watts	RPM	Tq (Oz-ft)	HP	Eff (%)	PF (%)	Cap
	230.0	382.7	479.9	0.560	0.783	0.530	72.7	1197	0.000	0.000	0.0	0.0	2.9
	230.0	379.6	474.9	0.572	0.756	0.522	82.3	1191	1.010	0.014	12.2	0.0	2.9
	230.0	368.9	456.5	0.624	0.702	0.500	107.6	1178	3.917	0.055	38.0	0.0	2.9
	230.0	355.6	431.6	0.741	0.706	0.471	141.7	1164	7.419	0.103	54.7	0.0	2.9
	230.0	343.1	413.5	0.859	0.763	0.450	170.3	1150	10.109	0.138	60.9	0.0	2.9
	230.0	331.9	400.0	0.950	0.830	0.434	191.2	1135	11.836	0.160	62.4	0.0	2.9
	230.0	320.8	387.5	1.035	0.901	0.419	210.3	1120	13.352	0.178	63.2	0.0	2.9
	230.0	310.8	376.2	1.117	0.975	0.406	228.7	1104	14.729	0.194	63.1	0.0	2.9
	230.0	292.8	355.1	1.253	1.113	0.383	259.1	1087	16.637	0.215	62.0	0.0	2.9
1075 RPM	230.0	281.3	343.3	1.336	1.201	0.370	275.3	1075	17.565	0.225	60.9	0.0	2.9
	230.0	275.5	337.7	1.376	1.242	0.363	282.9	1067	17.861	0.227	59.9	0.0	2.9
	230.0	261.7	325.1	1.470	1.338	0.348	300.6	1047	18.573	0.232	57.4	0.0	2.8
	230.0	248.0	313.5	1.562	1.442	0.335	317.5	1026	19.004	0.232	54.5	0.0	2.8
	230.0	233.4	301.4	1.662	1.557	0.322	335.2	1003	19.292	0.230	51.2	0.0	2.8
BDT OZ-FT	230.0	219.8	291.2	1.752	1.662	0.311	350.6	980	19.335	0.226	48.0	0.0	2.8
	230.0	218.3	290.2	1.761	1.673	0.310	352.1	977	19.330	0.225	47.6	0.0	2.8
	230.0	204.9	281.5	1.849	1.777	0.300	366.0	950	19.084	0.216	44.0	0.0	2.8
	230.0	192.1	274.2	1.932	1.877	0.291	378.7	919	18.783	0.206	40.5	0.0	2.8
	230.0	179.3	267.9	2.014	1.976	0.284	390.7	886	18.285	0.193	36.8	0.0	2.8
	230.0	166.8	262.6	2.095	2.075	0.279	402.0	850	17.498	0.177	32.9	0.0	2.8
	230.0	155.0	258.9	2.168	2.166	0.276	410.9	812	16.578	0.160	29.1	0.0	2.8
	230.0	144.5	256.6	2.234	2.247	0.273	418.8	770	15.710	0.144	25.6	0.0	2.8
	230.0	134.6	255.1	2.296	2.324	0.271	426.0	724	14.702	0.127	22.2	0.0	2.8
	230.0	125.3	254.3	2.352	2.395	0.270	431.8	676	13.676	0.110	19.0	0.0	2.8
	230.0	116.2	254.4	2.400	2.458	0.271	435.8	623	12.463	0.092	15.8	0.0	2.8
	230.0	108.1	255.2	2.442	2.509	0.272	438.7	567	11.207	0.076	12.9	0.0	2.8
	230.0	100.2	255.9	2.477	2.553	0.273	441.8	507	10.121	0.061	10.3	0.0	2.8
	230.0	93.2	256.9	2.503	2.598	0.273	443.2	442	9.097	0.048	8.0	0.0	2.8
	230.0	87.5	259.8	2.522	2.638	0.276	445.3	373	8.212	0.036	6.1	0.0	2.8
	230.0	83.4	263.3	2.536	2.665	0.281	446.4	299	7.533	0.027	4.5	0.0	2.8
	230.0	81.3	267.9	2.570	2.692	0.287	448.4	219	6.756	0.018	2.9	0.0	2.8

DRAWING NO. PAGE 1 of 2 REV.
4M261BJ -

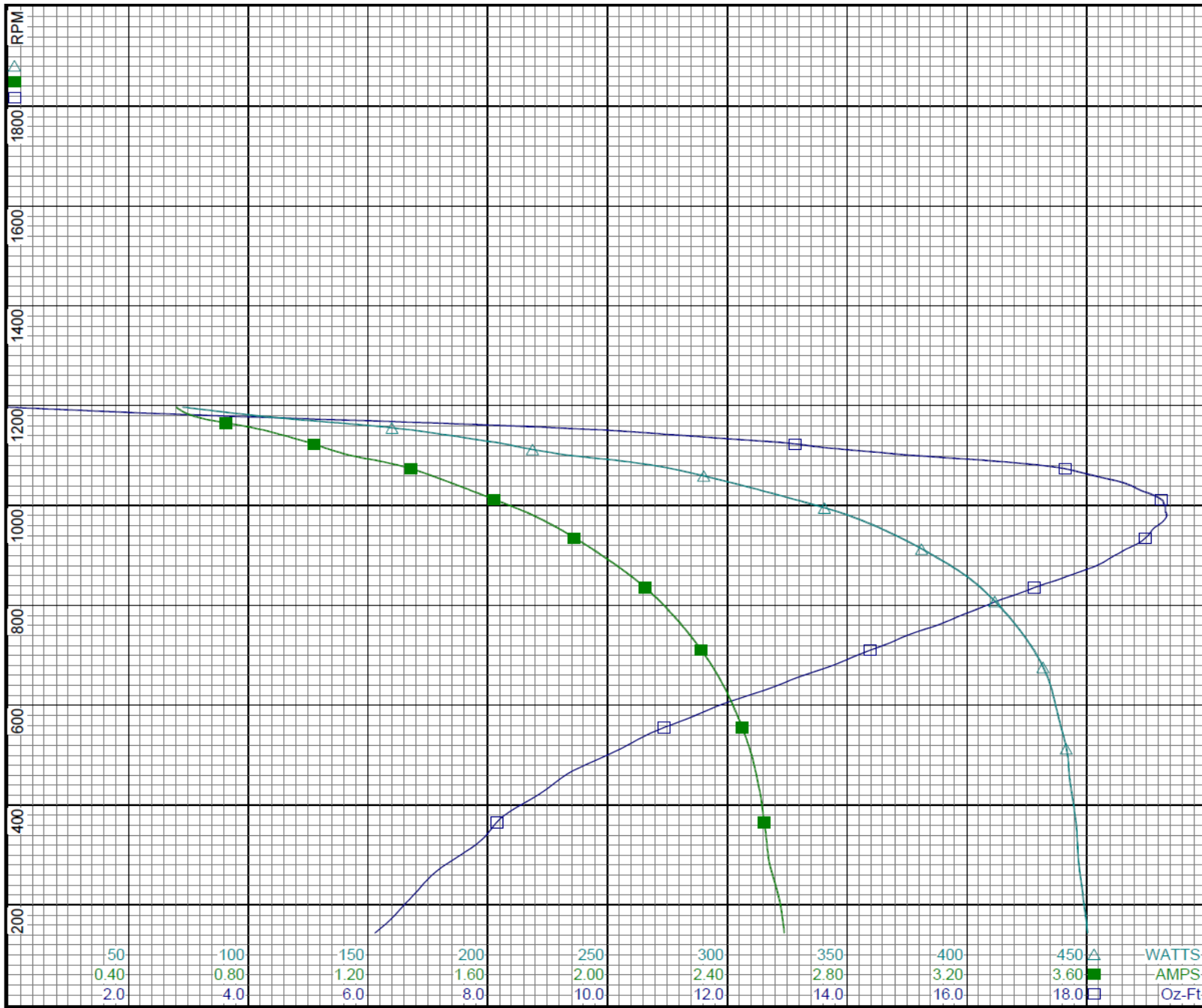
Dayton Electric Mfg. Co. Lake Forest, IL 60045 USA

Performance Data



4M261BJ

REV.
-



Curve Descriptions:
 Motor(1) Test 3 Run 230V 60 Hz 6P
 HI CCW 3ufd Run Filtered Data
 □ SPEED vs TORQUE
 ■ SPEED vs ILine
 △ SPEED vs WATTS

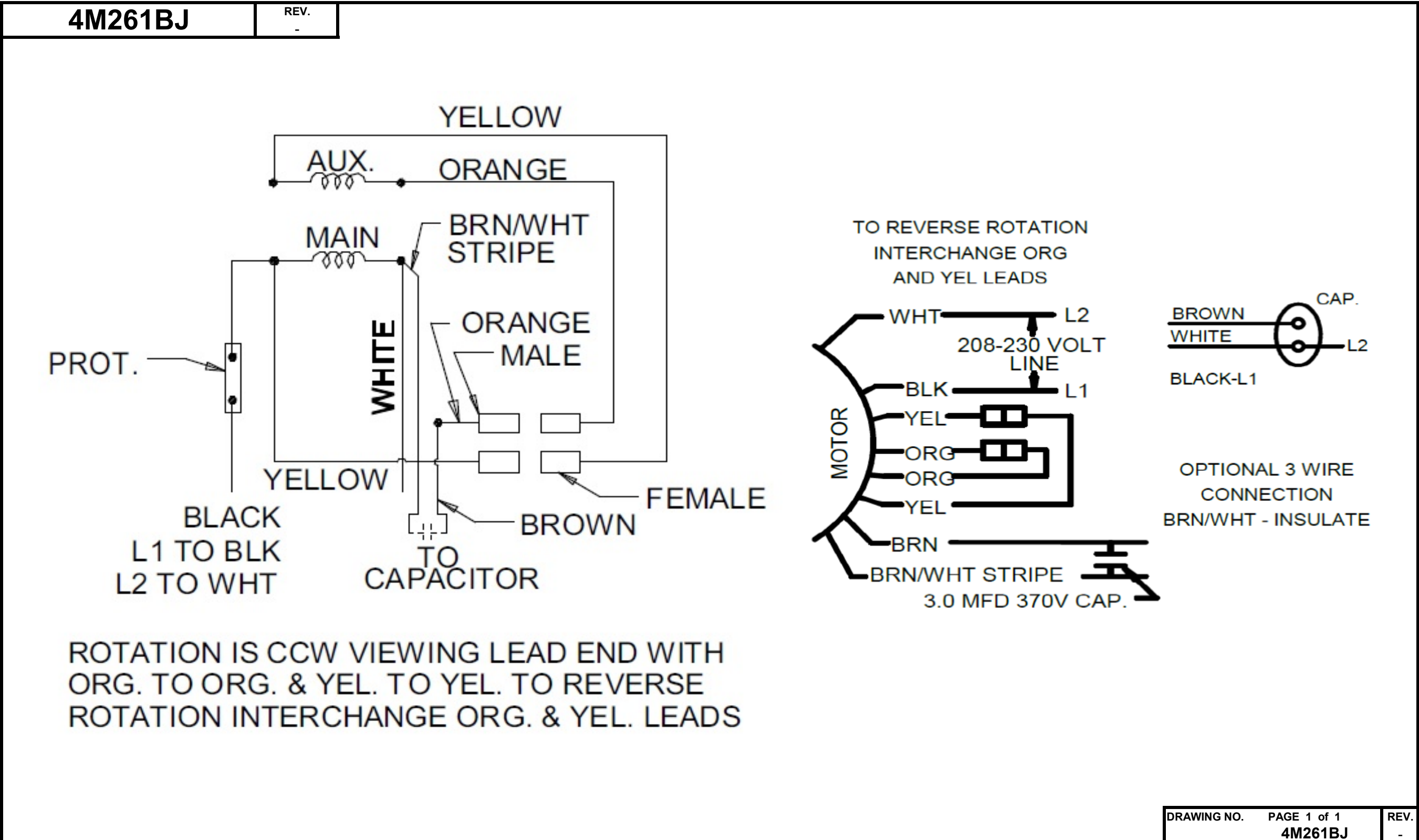
Motor Ratings:
 (1) 4M261BJ

DRAWING NO.	PAGE 2 of 2	REV.
4M261BJ		-

Dayton Electric Mfg. Co. Lake Forest, IL 60045 USA

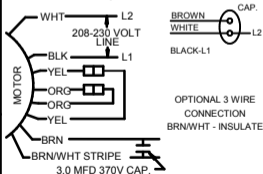
©2020 W.W. Grainger, Inc. This design may not be reproduced, modified or redistributed without written permission from W.W. Grainger, Inc.

Wiring Diagram



Dayton[®]

CONDENSER FAN MOTOR

HP: 1/6
VOLTS: 208-230**AMPS:** 1.3**RPM:** 1075**DUTY:** CONT**SF:** 1.0**KVA CODE:****ENCL:** TEAO**THERMALLY PROTECTED:** AUTO**MFG. NO.** **PROT. CODE:** 7A010**MTR REF:** K55HXRHM-2147**PH:** 1
HZ: 60
FR: 48YZ
INS CL: B
AMB: 60 °C
SFA:**AVG.F.L
EFF.****Part
No** 4M261BJ**Disconnect Power Before Making Any
Electrical Connections or Changes**TO REVERSE ROTATION
INTERCHANGE ORG
AND YEL LEADS
E37403
258501**US PAT 7709992**

Mfd for Dayton Electric Mfg. Co., Lake Forest, IL 60045 USA

Made in China