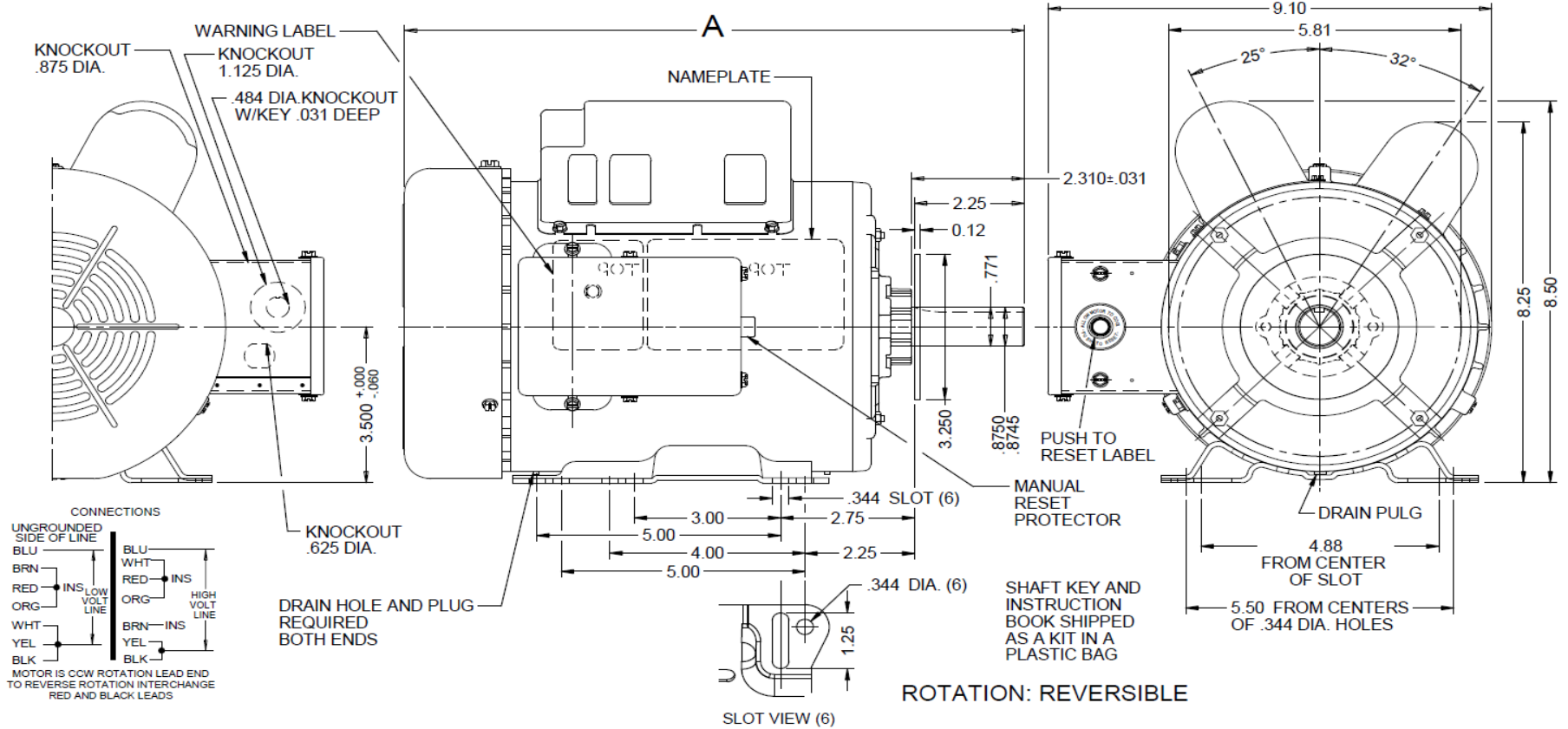


# Dimensional Drawing

**4K090BG**

REV.  
-

VAR	MODEL	CUST. PT. NO.	A	B	C	D	HP	VOLTS	SF	AMPS	HZ	RPM	CONN VOLTS	PROT.	DESCRIPTION / REMARKS
001	T63BVDJM-2233	4K090BG	14.254	---	---	---	2	115/230	1.0	20.0/10.0	60	1725	---	MANUAL	56HZ, TEFC, GREEN



DRAWING NO.	PAGE 1 of 1	REV.
4K090BG		-

Dayton Electric Mfg. Co. Lake Forest, IL 60045 USA

# Performance Data



4K090BG		REV.					
		-					
HP:	2						
Poles:	4						
No. of Speeds:	1						
Volts:	115/230	115	230				
HZ:	60	60	60				
Service Factor:	1						
Efficiency:	@ Rated Load	78.8	78.7				
Power Factor:	@ Rated Load	91.2	91.2				
Amps:	@ No Load						
	@ Rated Load	17.73	9.04				
	@ Service Factor	19.59	9.98				
	@ Locked Rotor	117.52	59.57				
RPM:	@ Rated Load	1736	1734				
Ambient (°C):	40						
Altitude (FASL):							
Torques:	Breakdown	209.5	211.9				
	Locked Rotor	270.4	246.4				
	Pull-Up	255.8	217.4				
	Rated Load	96.8	96.9				
	Service Factor	107.13	107.13				
Watts:	Rated Load	1870	1896				
KVA Code:	H	H	H				
Temperature Rise:	@ Rated Load	83.5	85.8				
	@ Service Factor	111.2	116.4				
Thermal Protector:	Trip Temp (°C)	142.1	167.5				
Winding Material:	Start (Auxiliary)	Cu	Cu				
	Run (Main)	Cu	Cu				
Capacitor(s):	Start (MFD / Volts)	896/280V					
	No. of Start Capacitors						
	Run (MFD / Volts)	60/280V					
	No. of Run Capacitors						
<b>LOW SPEED PERFORMANCE DATA:</b>							
HP:							
Poles:							
Volts:							
HZ:							
Efficiency:	@ Rated Load						
Power Factor:	@ Rated Load						
Amps:	@ No Load						
	@ Rated Load						
	@ Service Factor						
	@ Locked Rotor						
Torques:	Bead Down						
	Locked Rotor						
	Pull-Up						
	Rated Load						
	Service Factor						
Watts:	@ Rated Load						
Temperature Rise:	@ Rated Load						
	@ Service Factor						
		DRAWING NO. PAGE 1 of 1				REV.	
		4K090BG				-	

# Performance Data



**4K090BG**

REV.

-

## Dayton Manufacturing Company

### Motor Description

Model: T063DJM223301 / 4K090BG  
 Motor ID: 1 Of 2  
 Poles: 4  
 Volts: 115/230  
 Frequency: 60  
 HP: 2  
 Speed: 1725  
 Phase: 1  
 Protector: BED2975

### Test Conditions

Test Type: Start  
 Test Number: 4  
 Poles: 4  
 Volts: 115  
 Hz: 60  
 Rotation:  
 Special Cond: 2-Line  
 Speed Conn:  
 TestBoard: Amtps Performance Fixture #1  
 Run Cap: 60 µfd  
 Start Cap: 896 µfd  
 Environment:  
 Tested: 3/9/2007 1:30:19 PM  
 Tested By: Sharp, Gerald  
 Gear Ratio: 1:1  
 Bearing Friction: 1.12 Oz-Ft  
 Windage Torque: -2.24 Oz-Ft

Special Points	Vline (V)	Iline (A)	Watts	RPM	Tq (Oz-ft)	HP	Eff (%)	PF (%)
	115.0	117.52	12203	10	270.4	0.033	0.2	90.3
	115.0	117.10	12132	53	270.0	0.170	1.0	90.1
<b>PUT OZ-FT</b>	<b>115.0</b>	<b>116.44</b>	<b>12097</b>	<b>154</b>	<b>255.8</b>	<b>0.468</b>	<b>2.9</b>	<b>90.3</b>
	115.0	116.48	12111	210	263.8	0.660	4.1	90.4
	115.0	115.61	12064	355	285.6	1.207	7.5	90.7
	115.0	114.62	11981	488	302.0	1.755	10.9	90.9
	115.0	114.26	11936	610	316.5	2.299	14.4	90.8
	115.0	115.78	12127	724	327.8	2.824	17.4	91.1
	115.0	116.27	12296	827	340.5	3.352	20.3	92.0
	115.0	116.19	12366	922	352.5	3.871	23.4	92.6
	115.0	115.88	12425	1010	360.7	4.336	26.0	93.2
	115.0	115.63	12460	1090	365.5	4.742	28.4	93.7
	115.0	115.47	12485	1164	366.6	5.080	30.4	94.0
	115.0	115.23	12522	1230	362.8	5.312	31.6	94.5
	115.0	115.00	12565	1290	355.8	5.466	32.5	95.0
	115.0	114.77	12580	1346	346.3	5.547	32.9	95.3
	115.0	114.52	12614	1396	333.6	5.545	32.8	95.8
	115.0	114.31	12631	1441	313.6	5.381	31.8	96.1
	115.0	114.07	12663	1482	292.7	5.166	30.4	96.5
	115.0	113.81	12673	1520	269.7	4.880	28.7	96.8
	115.0	62.35	6177	1552	210.9	3.897	47.1	86.1
	115.0	45.26	4606	1584	192.9	3.637	58.9	88.5
	115.0	40.26	4141	1616	182.6	3.513	63.3	89.4
	115.0	35.74	3707	1643	173.0	3.385	68.1	90.2
	115.0	31.31	3276	1669	157.4	3.128	71.2	91.0
	115.0	27.02	2835	1691	141.2	2.843	74.8	91.3
	115.0	22.73	2388	1714	120.4	2.458	76.8	91.4
	115.0	18.32	1917	1735	99.1	2.047	79.7	91.0
	115.0	14.18	1440	1755	73.7	1.539	79.8	88.3
	115.0	9.85	915	1775	43.2	0.914	74.5	80.8
	115.0	6.39	390	1795	11.0	0.235	44.9	53.1
	115.0	5.93	245	1800	1.0	0.021	6.4	35.9

DRAWING NO. PAGE 1 of 8  
**4K090BG**

REV.  
 -

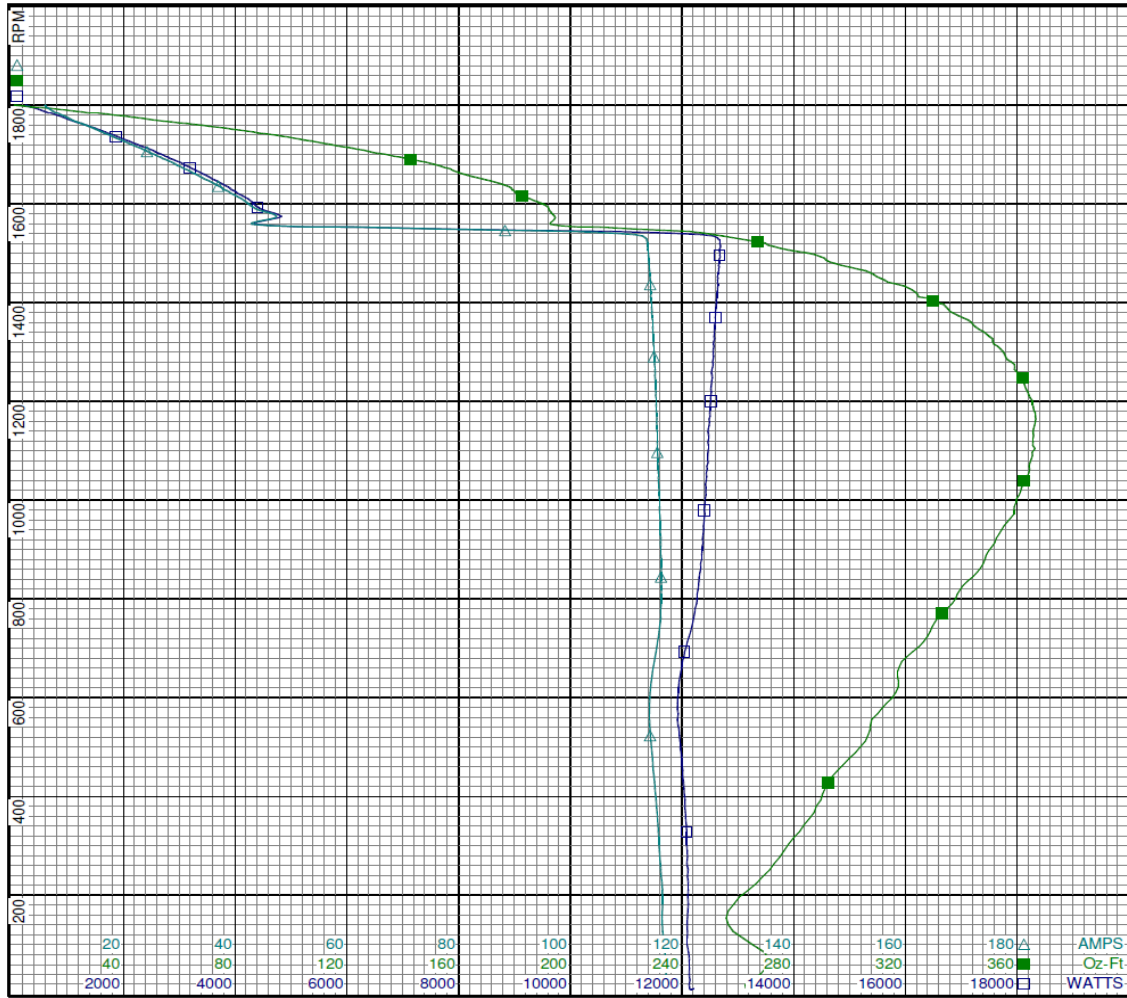
Dayton Electric Mfg. Co. Lake Forest, IL 60045 USA

# Performance Data



4K090BG

REV.  
-



Curve Descriptions:  
 Motor(1) Test 4 Start 115V 60 Hz 4P  
 2-Line  
 □ SPEED vs WATTS  
 ■ SPEED vs TORQUE  
 △ SPEED vs ILine

Motor Ratings:  
 T063DJM223301 4K090BG

DRAWING NO.	PAGE 2 of 8	REV.
	4K090BG	-

Dayton Electric Mfg. Co. Lake Forest, IL 60045 USA

# Performance Data



**4K090BG**

REV.

-

## Dayton Manufacturing Company

### Motor Description

Model: T063DJM223301 / 4K090BG  
 Motor ID: 1 Of 2  
 Poles: 4  
 Volts: 115/230  
 Frequency: 60  
 HP: 2  
 Speed: 1725  
 Phase: 1  
 Protector: BED2975

### Test Conditions

Test Type: Run  
 Test Number: 10  
 Poles: 4  
 Volts: 115  
 Hz: 60  
 Rotation:  
 Special Conn:  
 Speed Conn:  
 TestBoard: Amtps Performance Fixture #1  
 Run Cap: 60 µfd  
 Start Cap: 896µfd  
 Environment:  
 Tested: 3/9/2007 12:58:58 PM  
 Tested By: Sharp, Gerald  
 Gear Ratio: 1:1  
 Bearing Friction: 0.00 Oz-Ft  
 Windage Torque: -2.56 Oz-Ft

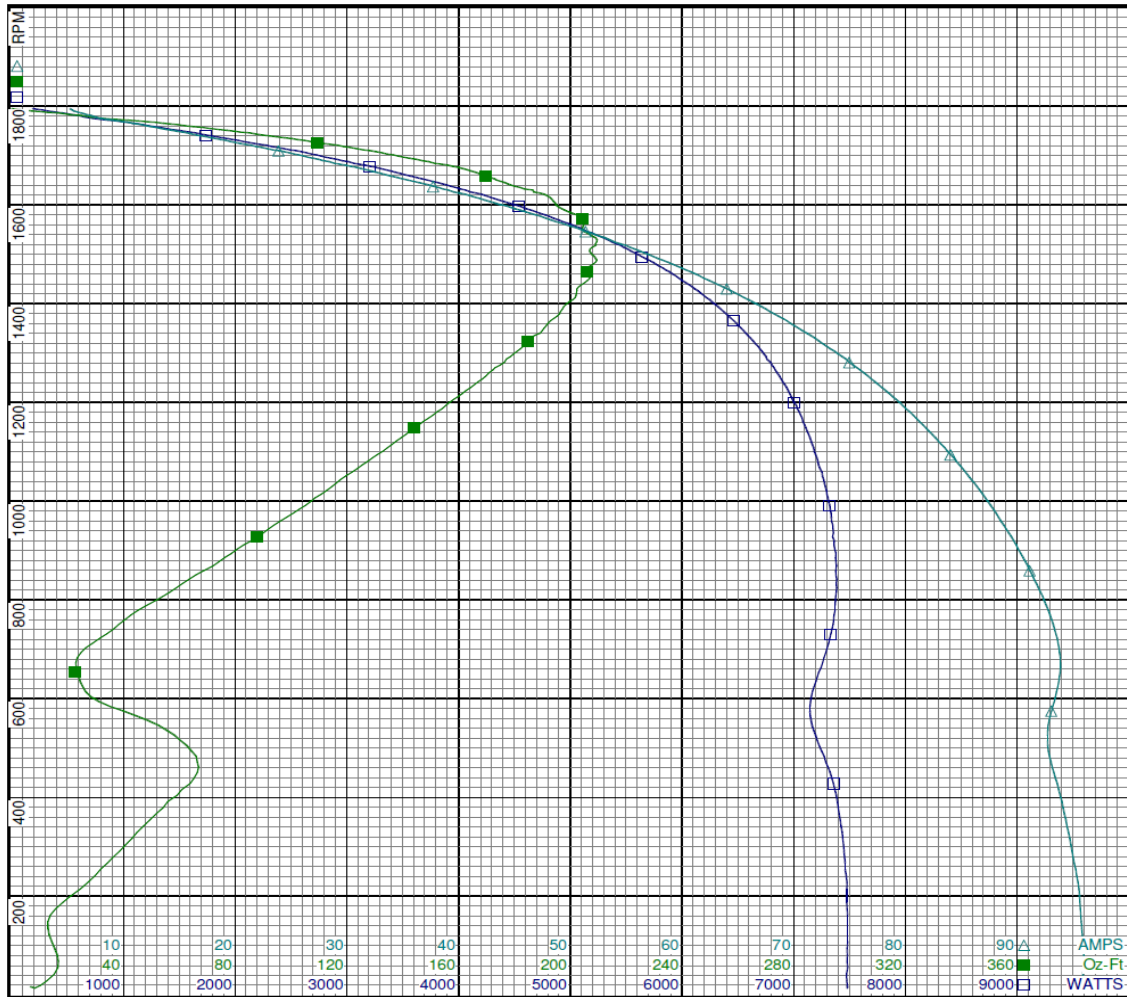
Special Points	Vline (V)	Vaux (V)	Vcap (V)	Iline (A)	Imain (A)	Iaux (A)	Watts	RPM	Tq (Oz-ft)	HP	Eff (%)	PF (%)	Cap
	115.0	153.4	199.5	5.22	8.01	4.530	186	1795	0.0	0.000	0.0	31.0	60.2
	115.0	149.2	191.5	7.51	7.93	4.322	655	1778	28.6	0.606	69.0	75.8	59.9
	115.0	144.5	183.1	11.99	10.94	4.149	1225	1760	62.0	1.299	79.2	88.8	60.1
	115.0	139.3	175.5	16.55	15.06	3.995	1739	1741	89.9	1.863	79.9	91.4	60.4
<b>2 HP</b>	<b>115.0</b>	<b>137.9</b>	<b>173.5</b>	<b>17.73</b>	<b>16.20</b>	<b>3.955</b>	<b>1870</b>	<b>1736</b>	<b>96.8</b>	<b>2.000</b>	<b>79.8</b>	<b>91.7</b>	<b>60.4</b>
<b>97.39 OZ-FT</b>	<b>115.0</b>	<b>137.8</b>	<b>173.4</b>	<b>17.83</b>	<b>16.30</b>	<b>3.952</b>	<b>1881</b>	<b>1736</b>	<b>97.4</b>	<b>2.013</b>	<b>79.8</b>	<b>91.7</b>	<b>60.5</b>
	115.0	134.3	168.7	20.93	19.32	3.852	2222	1722	114.1	2.339	78.5	92.3	60.6
	115.0	129.0	161.6	25.71	24.09	3.714	2728	1701	136.6	2.766	75.6	92.3	61.0
	115.0	123.3	154.8	30.35	28.81	3.573	3210	1678	157.9	3.153	73.3	92.0	61.2
	115.0	118.0	148.3	34.96	33.56	3.437	3672	1652	172.8	3.399	69.1	91.3	61.5
	115.0	111.8	142.1	39.57	38.31	3.306	4107	1626	187.0	3.618	65.7	90.2	61.7
	115.0	106.0	136.0	44.22	43.12	3.182	4536	1598	195.2	3.713	61.1	89.2	62.1
	115.0	100.1	130.4	48.72	47.79	3.060	4932	1566	204.8	3.817	57.7	88.0	62.2
	115.0	94.3	125.4	53.08	52.39	2.948	5294	1533	208.9	3.814	53.7	86.7	62.4
<b>BDT OZ-FT</b>	<b>115.0</b>	<b>93.8</b>	<b>124.8</b>	<b>53.52</b>	<b>52.86</b>	<b>2.937</b>	<b>5335</b>	<b>1529</b>	<b>209.5</b>	<b>3.814</b>	<b>53.3</b>	<b>86.7</b>	<b>62.4</b>
	115.0	88.4	120.6	57.43	56.92	2.841	5638	1495	208.6	3.712	49.1	85.4	62.5
	115.0	82.5	116.4	61.56	61.22	2.745	5942	1456	206.7	3.582	45.0	83.9	62.6
	115.0	76.7	112.8	65.56	65.41	2.659	6218	1412	201.7	3.390	40.7	82.5	62.5
	115.0	71.0	109.8	69.37	69.39	2.595	6462	1365	192.9	3.135	36.2	81.0	62.7
	115.0	65.5	107.4	72.92	73.12	2.529	6678	1313	183.2	2.865	32.0	79.6	62.5
	115.0	60.0	105.8	76.29	76.65	2.486	6852	1259	170.7	2.558	27.9	78.1	62.3
	115.0	54.8	104.7	79.48	79.98	2.450	7004	1199	156.7	2.237	23.8	76.6	62.1
	115.0	49.8	103.7	82.40	83.07	2.421	7134	1134	141.0	1.904	19.9	75.3	61.9
	115.0	45.2	103.6	85.10	85.90	2.412	7234	1066	123.7	1.569	16.2	73.9	61.8
	115.0	40.8	103.4	87.62	88.56	2.410	7322	991	105.2	1.241	12.6	72.7	61.8
	115.0	36.3	103.5	89.90	90.95	2.410	7361	911	83.1	0.901	9.1	71.2	61.8
	115.0	32.0	103.2	91.90	93.08	2.392	7384	824	58.9	0.578	5.8	69.9	61.5
	115.0	27.2	102.6	93.45	94.76	2.362	7331	731	34.0	0.296	3.0	68.2	61.1
	115.0	21.3	102.9	93.72	95.18	2.381	7197	634	24.5	0.185	1.9	66.8	61.3
	115.0	14.3	108.7	92.73	94.35	2.521	7178	535	55.6	0.354	3.7	67.3	61.5
	115.0	13.5	114.4	93.56	95.23	2.648	7355	428	63.9	0.326	3.3	68.4	61.4
	115.0	12.4	116.2	94.80	96.53	2.670	7445	303	40.7	0.147	1.5	68.3	60.9
	115.0	9.7	118.5	95.64	97.47	2.683	7476	174	15.7	0.033	0.3	68.0	60.1
	115.0	9.5	121.2	95.87	97.79	2.766	7472	41	15.2	0.007	0.1	67.8	60.5

# Performance Data



4K090BG

REV.  
-



Curve Descriptions:  
Motor(1) Test 10 Run 115V 60 Hz 4P

- SPEED vs WATTS
- SPEED vs TORQUE
- △ SPEED vs ILine

Motor Ratings:  
T063DJM223301 4K090BG

DRAWING NO.	PAGE 4 of 8	REV.
	4K090BG	-

Dayton Electric Mfg. Co. Lake Forest, IL 60045 USA

# Performance Data



**4K090BG**

REV.

-

## Dayton Manufacturing Company

### Motor Description

Model: T063DJM223301 / 4K090BG  
 Motor ID: 1 Of 2  
 Poles: 4  
 Volts: 115/230  
 Frequency: 60  
 HP: 2  
 Speed: 1725  
 Phase: 1  
 Protector: BED2975

### Test Conditions

Test Type: Start  
 Test Number: 6  
 Poles: 4  
 Volts: 230  
 Hz: 60  
 Rotation:  
 Special Cond: 2-Line  
 Speed Conn:  
 TestBoard: Amtps Performance Fixture #1  
 Run Cap: 60 µfd  
 Start Cap: 896 µfd  
 Environment:  
 Tested: 3/9/2007 2:59:46 PM  
 Tested By: Sharp, Gerald  
 Gear Ratio: 1:1  
 Bearing Friction: 0.00 Oz-Ft  
 Windage Torque: -3.52 Oz-Ft

Special Points	Vline (V)	Iline (A)	Imain (A)	Iaux (A)	Watts	RPM	Tq(Oz-ft)	HP	Eff (%)	PF (%)
	230.0	59.57	59.51	0.237	11861	10	246.4	0.029	0.2	86.6
	230.0	59.38	59.26	0.631	11807	53	238.0	0.149	0.9	86.4
<b>PUT OZ-FT</b>	<b>230.0</b>	<b>59.08</b>	<b>59.00</b>	<b>0.141</b>	<b>11791</b>	<b>154</b>	<b>217.4</b>	<b>0.398</b>	<b>2.5</b>	<b>86.8</b>
	230.0	58.97	58.89	0.074	11769	209	234.3	0.582	3.7	86.8
	230.0	58.29	58.20	0.101	11682	355	257.2	1.088	6.9	87.1
	230.0	57.66	57.57	0.099	11579	488	272.4	1.582	10.2	87.3
	230.0	57.36	57.28	0.098	11498	610	281.7	2.045	13.3	87.2
	230.0	57.99	57.92	0.104	11660	723	290.1	2.496	16.0	87.4
	230.0	58.21	58.13	0.106	11851	826	302.7	2.977	18.7	88.5
	230.0	58.02	57.95	0.104	11933	922	314.9	3.457	21.6	89.4
	230.0	57.73	57.64	0.102	11961	1010	323.3	3.886	24.2	90.1
	230.0	57.40	57.32	0.109	11985	1090	328.5	4.263	26.5	90.8
	230.0	57.07	57.00	0.106	12001	1163	329.0	4.556	28.3	91.4
	230.0	56.72	56.65	0.105	12025	1230	326.6	4.783	29.7	92.2
	230.0	56.32	56.24	0.101	12016	1290	321.1	4.933	30.6	92.8
	230.0	55.93	55.85	0.101	12005	1346	313.3	5.019	31.2	93.3
	230.0	55.54	55.46	0.107	11996	1396	301.1	5.003	31.1	93.9
	230.0	55.14	55.06	0.104	11982	1441	286.3	4.914	30.6	94.5
	230.0	54.77	54.68	0.105	11965	1483	266.1	4.699	29.3	95.0
	230.0	54.37	54.29	0.112	11947	1520	243.9	4.414	27.6	95.5
	230.0	40.69	40.54	0.103	8485	1552	203.9	3.768	33.1	90.7
	230.0	22.57	22.50	0.094	4597	1584	186.6	3.520	57.1	88.5
	230.0	20.03	19.96	0.099	4107	1615	181.2	3.483	63.3	89.2
	230.0	17.76	17.70	0.097	3676	1644	170.2	3.332	67.6	90.0
	230.0	15.60	15.54	0.097	3250	1669	153.3	3.046	69.9	90.6
	230.0	13.38	13.34	0.095	2805	1692	138.2	2.785	74.1	91.1
	230.0	11.23	11.19	0.095	2354	1714	117.3	2.395	75.9	91.1
	230.0	9.15	9.11	0.095	1898	1734	95.3	1.967	77.3	90.2
	230.0	6.93	6.90	0.098	1405	1755	71.4	1.492	79.2	88.1
	230.0	4.89	4.87	0.094	916	1775	42.5	0.899	73.2	81.5
	230.0	3.21	3.21	0.093	384	1794	9.0	0.192	37.3	51.9
	230.0	2.99	2.99	0.096	232	1800	0.0	0.000	0.0	33.7

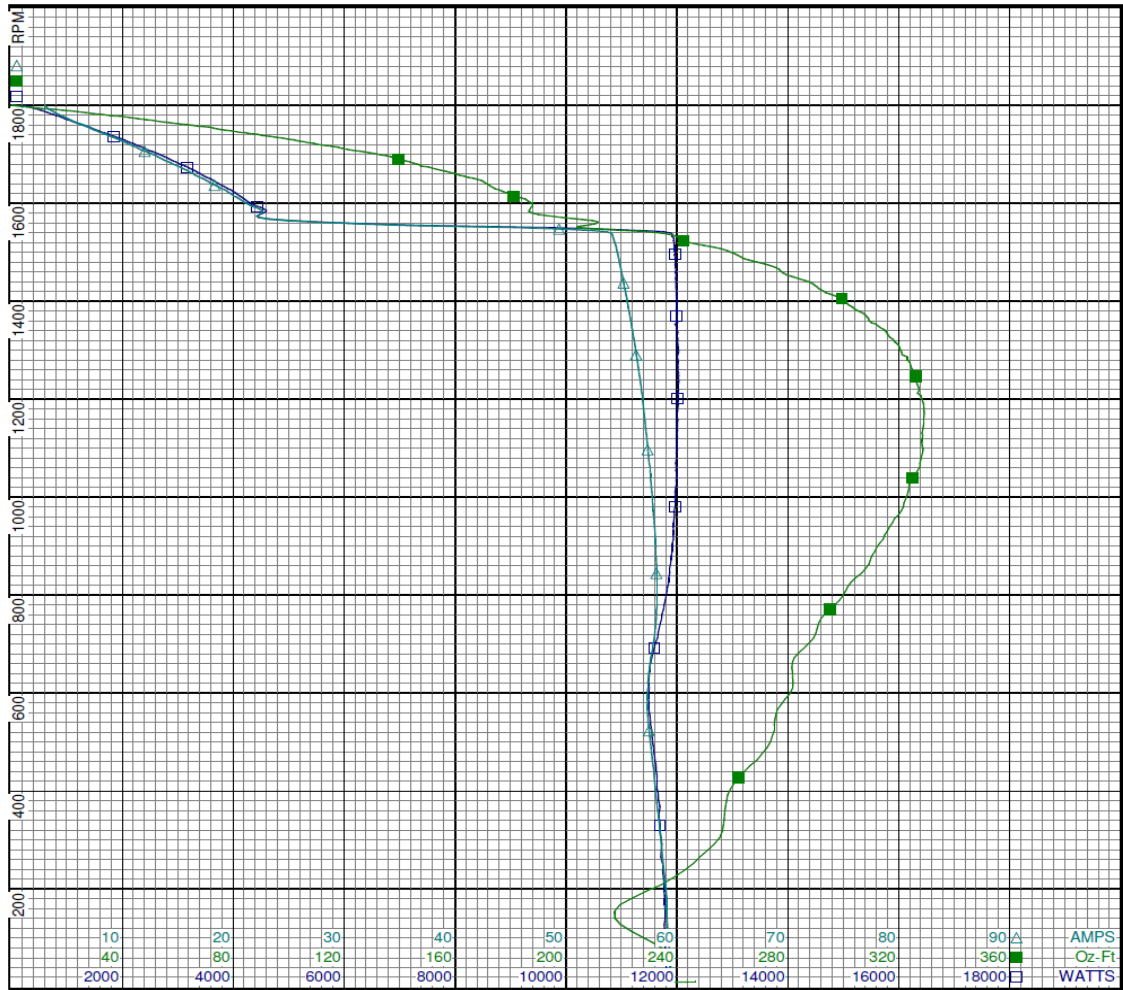
DRAWING NO. PAGE 5 of 8 REV.  
 4K090BG -

# Performance Data



4K090BG

REV.  
-



Curve Descriptions:  
 Motor(1) Test 6 Start 230V 60 Hz 4P  
 2-Line  
 □ SPEED vs WATTS  
 ■ SPEED vs TORQUE  
 △ SPEED vs ILine

Motor Ratings:  
 T063DJM223301 4K090BG

DRAWING NO. PAGE 6 of 8 REV.  
 4K090BG -

Dayton Electric Mfg. Co. Lake Forest, IL 60045 USA



# Performance Data



**4K090BG**

REV.

-

## Dayton Manufacturing Company

### Motor Description

Model: T063DJM223301 / 4K090BG  
 Motor ID: 1 Of 2  
 Poles: 4  
 Volts: 115/230  
 Frequency: 60  
 HP: 2  
 Speed: 1725  
 Phase: 1  
 Protector: BED2975

### Test Conditions

Test Type: Run  
 Test Number: 12  
 Poles: 4  
 Volts: 230  
 Hz: 60  
 Rotation:  
 Special Cond:  
 Speed Conn:  
 TestBoard: Amtps Performance Fixture #1

Run Cap: 60 µfd  
 Start Cap: 896 µfd  
 Environment:  
 Tested: 3/9/2007 3:12:52 PM  
 Tested By: Sharp, Gerald  
 Gear Ratio: 1:1  
 Bearing Friction: -0.48 Oz-Ft  
 Windage Torque: -3.84 Oz-Ft

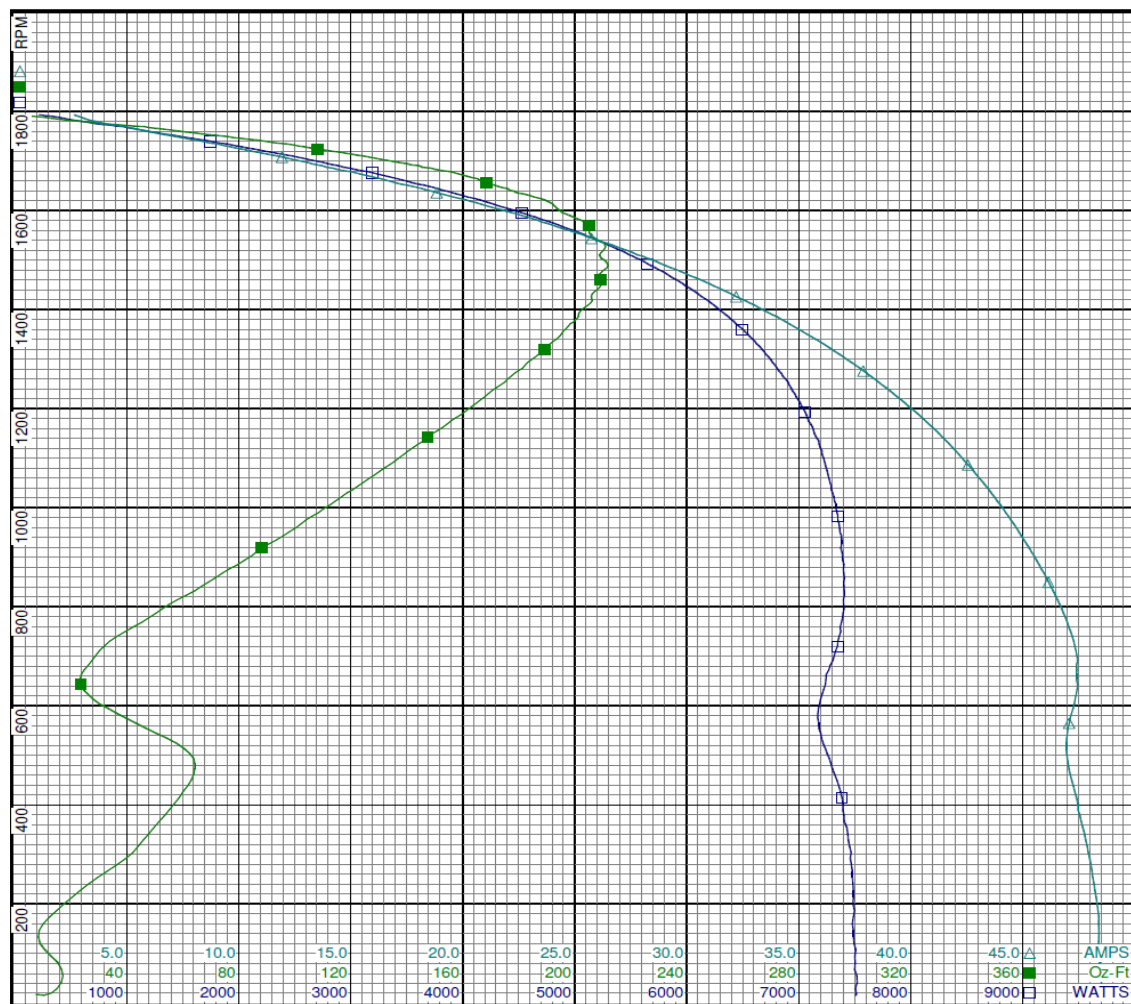
Special Points	Vline (V)	Vaux (V)	Vcap (V)	Iline (A)	Imain (A)	Iaux (A)	Watts	RPM	Tq (Oz-ft)	HP	Eff (%)	PF (%)	Cap
	230.0	186.0	198.8	2.67	5.88	4.504	221	1793	0.0	0.000	0.0	35.9	60.1
	230.0	188.4	190.6	4.02	5.13	4.298	726	1775	31.3	0.662	68.1	78.5	59.8
	230.0	188.8	183.2	6.06	5.71	4.146	1228	1758	61.2	1.282	77.9	88.1	60.0
	230.0	188.1	175.7	8.36	7.31	4.000	1750	1750	89.5	1.854	79.0	90.9	60.4
<b>2 HP</b>	<b>230.0</b>	<b>188.0</b>	<b>173.6</b>	<b>9.04</b>	<b>7.88</b>	<b>3.956</b>	<b>1896</b>	<b>1734</b>	<b>96.9</b>	<b>2.000</b>	<b>78.7</b>	<b>91.2</b>	<b>60.4</b>
<b>97.39 OZ-FT</b>	<b>230.0</b>	<b>188.0</b>	<b>173.5</b>	<b>9.07</b>	<b>7.91</b>	<b>3.954</b>	<b>1904</b>	<b>1734</b>	<b>97.4</b>	<b>2.010</b>	<b>78.8</b>	<b>91.2</b>	<b>60.4</b>
	230.0	187.4	168.9	10.55	9.22	3.853	2229	1720	112.9	2.311	77.3	91.8	60.5
	230.0	186.3	162.3	12.84	11.44	3.727	2708	1699	135.0	2.730	75.2	91.7	60.9
	230.0	184.7	155.7	15.19	13.79	3.583	3193	1676	156.9	3.131	73.2	91.4	61.1
	230.0	183.0	149.4	17.48	16.16	3.452	3650	1651	171.1	3.363	68.7	90.8	61.3
	230.0	181.0	143.1	19.85	18.64	3.320	4102	1624	187.5	3.626	65.9	89.8	61.5
	230.0	178.6	137.1	22.18	21.10	3.203	4524	1595	195.6	3.714	61.2	88.7	62.0
	230.0	176.0	131.4	24.40	23.47	3.080	4925	1564	205.5	3.827	58.0	87.8	62.2
	230.0	173.3	126.2	26.67	25.90	2.966	5298	1530	210.8	3.839	54.1	86.4	62.3
	230.0	170.7	121.2	28.86	28.25	2.861	5649	1492	211.7	3.761	49.7	85.1	62.6
<b>BDT OZ-FT</b>	<b>230.0</b>	<b>170.4</b>	<b>120.8</b>	<b>29.07</b>	<b>28.47</b>	<b>2.850</b>	<b>5681</b>	<b>1488</b>	<b>211.9</b>	<b>3.754</b>	<b>49.3</b>	<b>85.0</b>	<b>62.6</b>
	230.0	167.6	116.8	31.00	30.55	2.759	5962	1452	209.7	3.626	45.4	83.6	62.7
	230.0	164.8	113.1	33.02	32.74	2.673	6243	1408	204.7	3.432	41.0	82.2	62.7
	230.0	161.7	109.6	34.98	34.86	2.588	6498	1360	196.8	3.186	36.6	80.8	62.6
	230.0	158.6	106.9	36.81	36.85	2.521	6705	1309	187.1	2.916	32.4	79.2	62.6
	230.0	155.6	104.5	38.57	38.76	2.466	6904	1253	174.9	2.609	28.2	77.8	62.6
	230.0	152.3	102.9	40.21	40.55	2.420	7056	1193	160.7	2.282	24.1	76.3	62.4
	230.0	149.3	101.9	41.72	42.19	2.392	7181	1128	144.1	1.936	20.1	74.8	62.3
	230.0	146.4	101.1	43.08	43.70	2.370	7269	1058	126.5	1.594	16.4	73.4	62.2
	230.0	143.7	100.7	44.35	45.10	2.359	7348	983	106.2	1.242	12.6	72.0	62.2
	230.0	141.2	100.2	45.51	46.38	2.338	7390	902	84.4	0.906	9.1	70.6	61.9
	230.0	138.9	99.7	46.55	47.54	2.320	7397	814	58.0	0.562	5.7	69.1	61.7
	230.0	137.4	98.6	47.31	48.38	2.290	7345	720	32.0	0.274	2.8	67.5	61.6
	230.0	134.1	99.1	47.38	48.62	2.279	7208	623	26.2	0.194	2.0	66.1	61.0
	230.0	126.7	105.1	46.93	48.32	2.425	7215	524	57.7	0.360	3.7	66.8	61.2
	230.0	121.9	110.4	47.39	48.85	2.537	7385	414	58.8	0.290	2.9	67.8	61.0
	230.0	119.8	112.2	47.98	49.54	2.570	7460	292	39.8	0.138	1.4	67.6	60.8
	230.0	116.4	114.6	48.37	50.03	2.598	7478	160	10.3	0.020	0.2	67.2	60.2
	230.0	113.2	117.6	48.51	50.25	2.678	7505	29	15.1	0.005	0.1	67.3	60.4

DRAWING NO. PAGE 7 of 8 REV.  
**4K090BG** -

# Performance Data



**4K090BG**      REV.  
-



Curve Descriptions:  
Motor(1) Test 12 Run 230V 60 Hz 4P

- SPEED vs WATTS
- SPEED vs TORQUE
- △ SPEED vs ILine

Motor Ratings:  
T063DJM223301 4K090BG

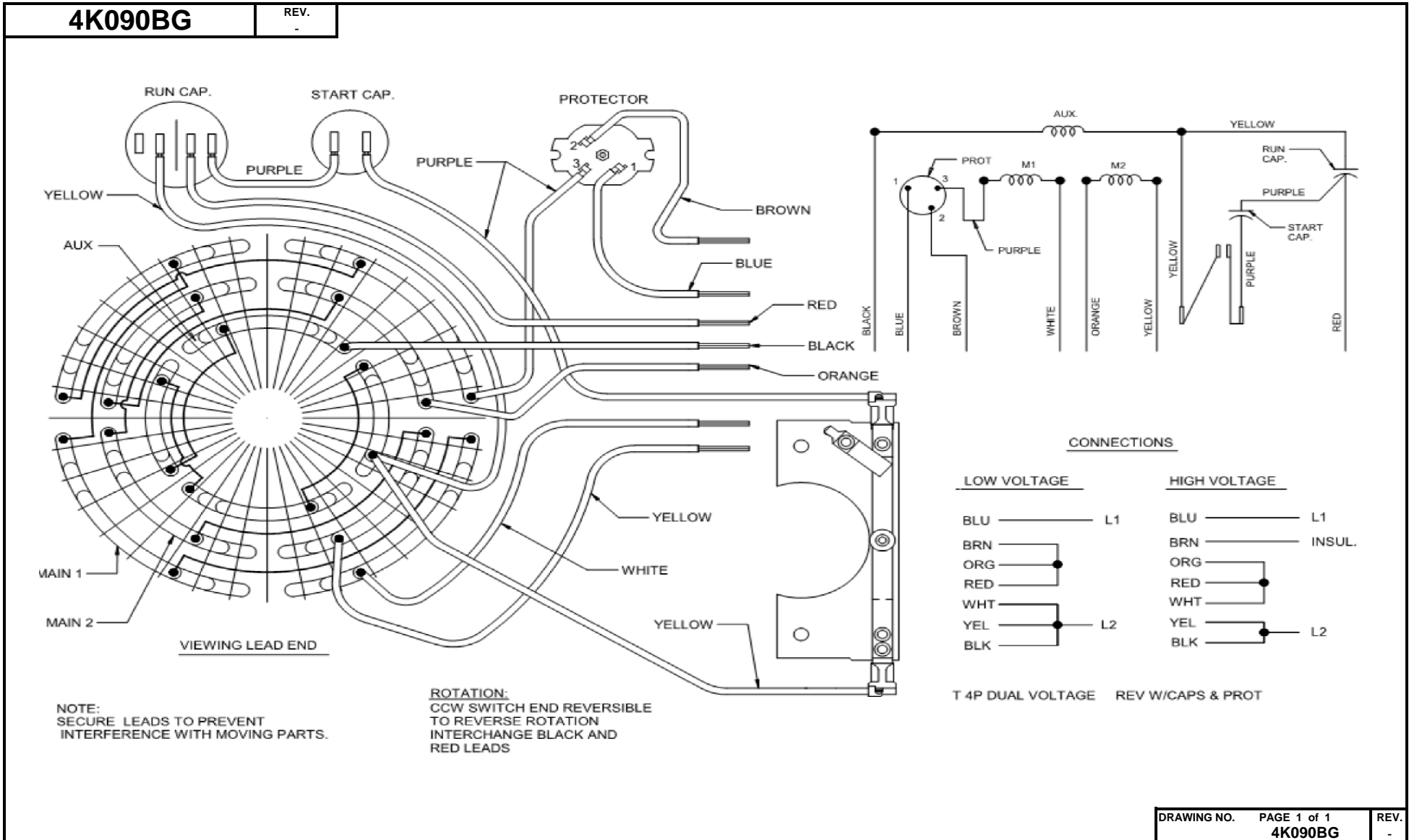
5.0	10.0	15.0	20.0	25.0	30.0	35.0	40.0	45.0	AMPS
40	80	120	160	200	240	280	320	360	Oz-Ft
1000	2000	3000	4000	5000	6000	7000	8000	9000	WATTS

DRAWING NO.	PAGE 8 of 8	REV.
	<b>4K090BG</b>	-

**Dayton Electric Mfg. Co. Lake Forest, IL 60045 USA**

©2019 W.W. Grainger, Inc. This design may not be reproduced, modified or redistributed without written permission from W.W. Grainger, Inc.

# Wiring Diagram



**Dayton**<sup>®</sup>**FARM DUTY MOTOR**

HP: 2

VOLTS: 115/230

AMPS: 20.0/10.0

RPM: 1725

DUTY: CONT

SF: 1.0

KVA CODE: J

ENCL: TEFC

THERMALLY PROTECTED: MANUAL

MFG. NO.   PROT. CODE:  09081  AVG. F.L. EFF.

MTR REF: T63BVDJM-2233

[ BAR CODE ]

Part No 4K090BG

PH: 1

HZ: 60

FR: 56HZ

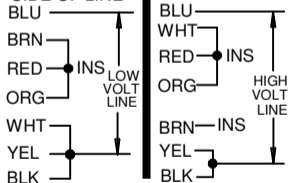
INS CL: F

AMB: 40 °C

SFA: 20.0/10.0

**Disconnect Power Before Making  
Any Electrical Connections or Changes**

## CONNECTIONS

UNGROUND  
SIDE OF LINEMOTOR IS CCW ROTATION LEAD END  
TO REVERSE ROTATION INTERCHANGE  
RED AND BLACK LEADS

E37403



258501

Mfd for Dayton Electric Mfg. Co., Lake Forest, IL 60045 USA

[ Made in Mexico ]