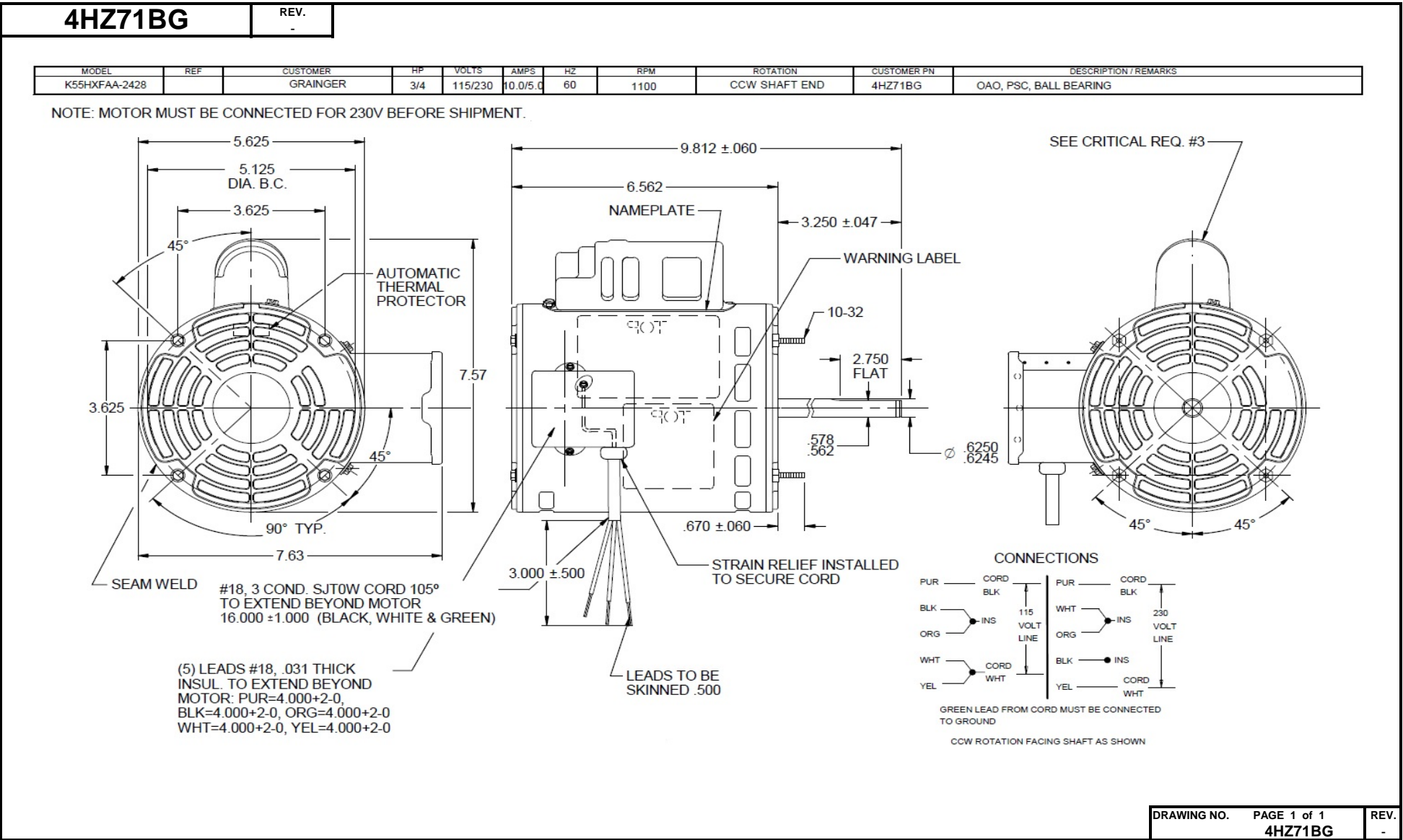


Dimensional Drawing



4HZ71BG

REV.

-

SHADED-POLE & PSC MOTOR PERFORMANCE

HP:	3/4							
Poles:	6							
Ambient (°C):	40							
Altitude (FASL):								
No. of Speeds:	1							
HIGH SPEED								
Volts:	115/230	115	230					
HZ:	60	60	60					
Service Factor:	1							
Efficiency:	@ Rated Load	68.8	68.3					
Power Factor:	@ Rated Load	84.1	83.6					
Amps:	@ No Load							
	@ Rated Load	8.3	4.1					
	@ Locked Rotor	23.2	11.5					
RPM:	@ Rated Load	1111	1106					
Torques:	Breakdown	85.1	84.6					
	Locked Rotor	20.3	22.3					
	Pull-Up	18.9	25.3					
	Rated Load	56	56					
	Service Factor	56	56					
Watts:	Rated Load	803.4	805.1					
Temperature Rise:	@ Rated Load	N/A	N/A					
Thermal Protector:	Trip Temp (°C)	N/A	N/A					
Winding Material:	Start (Auxiliary)	Cu	Cu					
	Run (Main)	Cu	Cu					
Capacitor(s):	Run (MFD / Volts)	17.5 mFd 370V						
	No. of Run Capacitors							

MEDIUM-HIGH SPEED

HP:								
Volts:								
HZ:								
Efficiency:	@ Rated Load							
Power Factor:	@ Rated Load							
Amps:	@ No Load							
	@ Rated Load							
	@ Locked Rotor							
Torques: Oz.Ft. / Lb.In. (Circle One)	Breakdown							
	Locked Rotor							
	Pull-Up							
	Rated Load							
Watts:	@ Rated Load							
Temperature Rise:	@ Rated Load							

 DRAWING NO. PAGE 1 of 1
 4HZ71BG

 REV.
 -

Performance Data



4HZ71BG

REV.
-

Dayton Manufacturing Company

Motor Description

Model: K055HXFAA2428
Motor ID: 1
Poles: 6
Volts: 115/230
Frequency: 60
HP: .75
Speed: 1125
Phase: 1
Protector: 7AM036 A5

Test Conditions

Test Type: Start
Test Number: 3
Poles: 6
Volts: 115
Hz: 60
Rotation:
Special Cond:
Speed Conn:
TestBoard: CMD InLine Three Phase #3 Fixture #1
Run Cap: 17.5µfd
Start Cap: 0 µfd
Environment: 23.4 Deg C 54 % RH 967 hPa
Tested: 12/12/2016 9:04:43 AM
Tested By: Bribiesca, Griselda
Gear Ratio: 1:1
Bearing Friction: -0.45 Oz-Ft
Windage Torque: -2.15 Oz-Ft

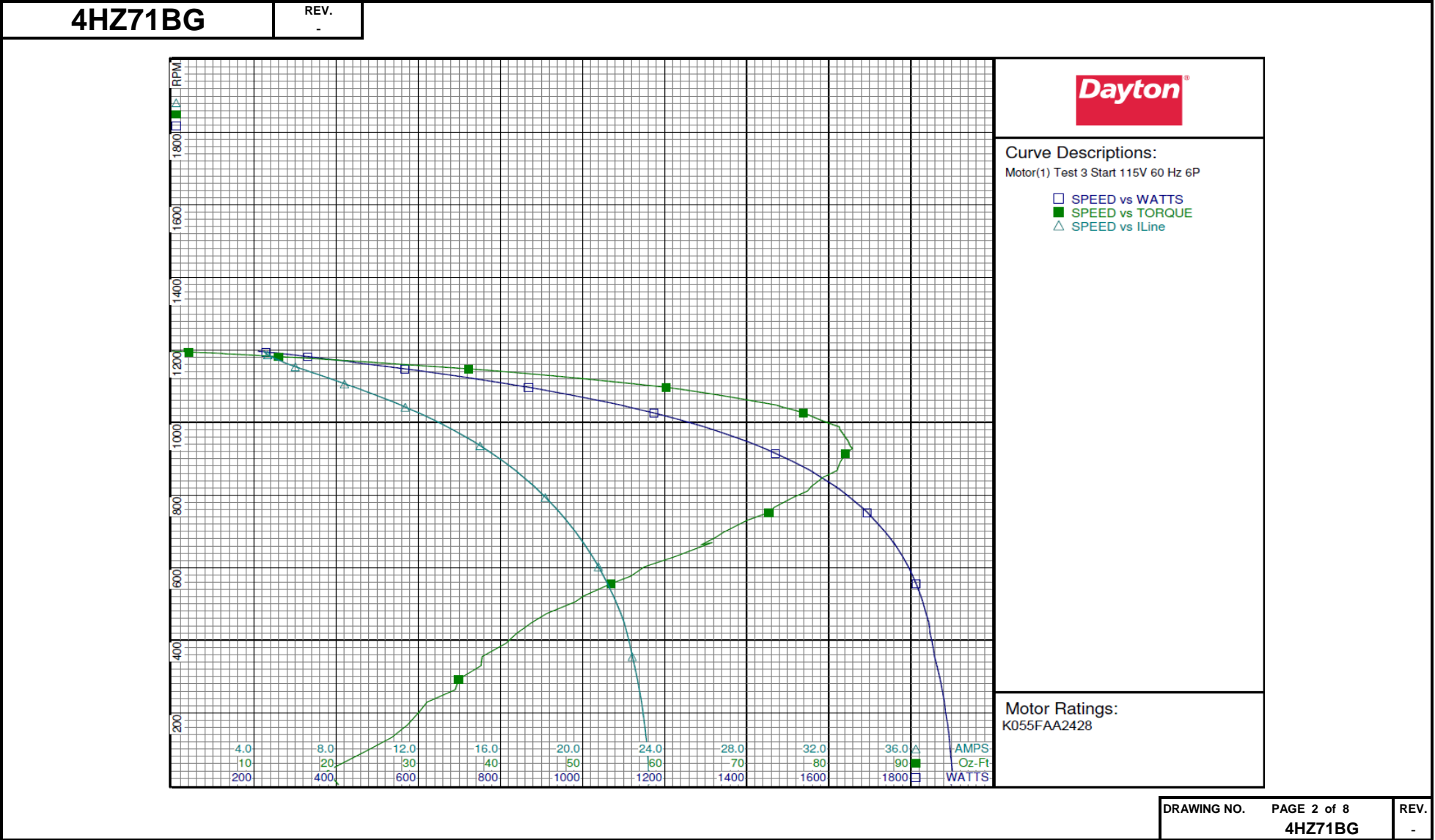
Special Points	Vline (V)	Vaux(V)	Vcap(V)	Iline (A)	Watts	RPM	Tq(Oz-ft)	HP	Eff (%)	PF (%)
PUT OZ-FT	115.0	47.7	146.9	23.23	1898.2	2	20.26	0.000	0.0	71.1
	115.0	49.1	145.6	23.23	1901.4	39	18.86	0.009	0.3	71.2
	115.0	51.9	140.2	23.10	1893.7	132	26.75	0.042	1.7	71.3
	115.0	57.1	135.7	22.87	1882.0	229	31.04	0.085	3.4	71.5
	115.0	64.4	131.9	22.54	1863.6	329	37.63	0.147	5.9	71.9
	115.0	73.5	129.6	22.17	1846.9	418	41.95	0.209	8.4	72.4
	115.0	86.6	131.0	21.63	1829.1	505	49.12	0.296	12.1	73.5
	115.0	99.7	135.0	21.03	1805.1	576	55.87	0.383	15.8	74.6
	115.0	119.0	143.1	20.04	1758.6	669	65.80	0.524	22.2	76.3
	115.0	125.6	146.6	19.67	1738.2	697	67.17	0.557	23.9	76.8
	115.0	143.4	157.3	18.67	1680.7	765	73.34	0.668	29.7	78.3
	115.0	160.8	169.7	17.66	1617.1	823	77.86	0.763	35.2	79.6
	115.0	179.2	184.3	16.55	1541.5	876	81.15	0.846	40.9	81.0
	115.0	200.3	202.9	15.23	1444.0	928	82.88	0.916	47.3	82.5
	115.0	218.1	219.7	14.08	1352.3	967	81.78	0.941	51.9	83.5
	115.0	231.0	232.2	13.23	1281.0	993	80.60	0.953	55.5	84.2
	115.0	254.5	256.3	11.61	1136.1	1036	75.48	0.931	61.1	85.1
	115.0	265.9	268.4	10.81	1059.9	1056	71.61	0.900	63.4	85.3
	115.0	285.4	289.5	9.37	918.0	1087	63.33	0.819	66.6	85.2
	115.0	293.9	299.0	8.74	851.7	1100	58.96	0.772	67.6	84.7
	115.0	311.8	319.6	7.39	700.8	1127	47.21	0.633	67.4	82.4
	115.0	322.4	332.0	6.61	606.0	1142	39.43	0.536	66.0	79.8
	115.0	328.0	338.9	6.19	551.6	1150	34.64	0.474	64.1	77.5
	115.0	338.1	351.5	5.49	451.7	1164	25.31	0.351	57.9	71.5
	115.0	345.8	361.8	5.03	374.2	1175	17.55	0.246	49.0	64.6
	115.0	352.1	371.3	4.74	314.2	1183	11.17	0.157	37.3	57.6
	115.0	355.3	377.1	4.60	273.2	1189	6.74	0.095	26.0	51.7
	115.0	357.0	380.5	4.52	242.0	1192	3.44	0.049	15.0	46.6
	115.0	357.6	382.1	4.49	223.3	1195	1.51	0.021	7.2	43.3
	115.0	358.1	383.1	4.48	213.5	1195	0.50	0.007	2.5	41.4
	115.0	358.2	383.3	4.48	209.3	1196	0.00	0.000	0.0	40.7

DRAWING NO. PAGE 1 of 8
4HZ71BG

REV.
-

Dayton Electric Mfg. Co. Lake Forest, IL 60045 USA

Performance Data



Performance Data



4HZ71BG

REV.
-

Dayton Manufacturing Company

Motor Description

Model: K055HXFAA2428
Motor ID: 1
Poles: 6
Volts: 115/230
Frequency: 60
HP: .75
Speed: 1125
Phase: 1
Protector: 7AM036 A5

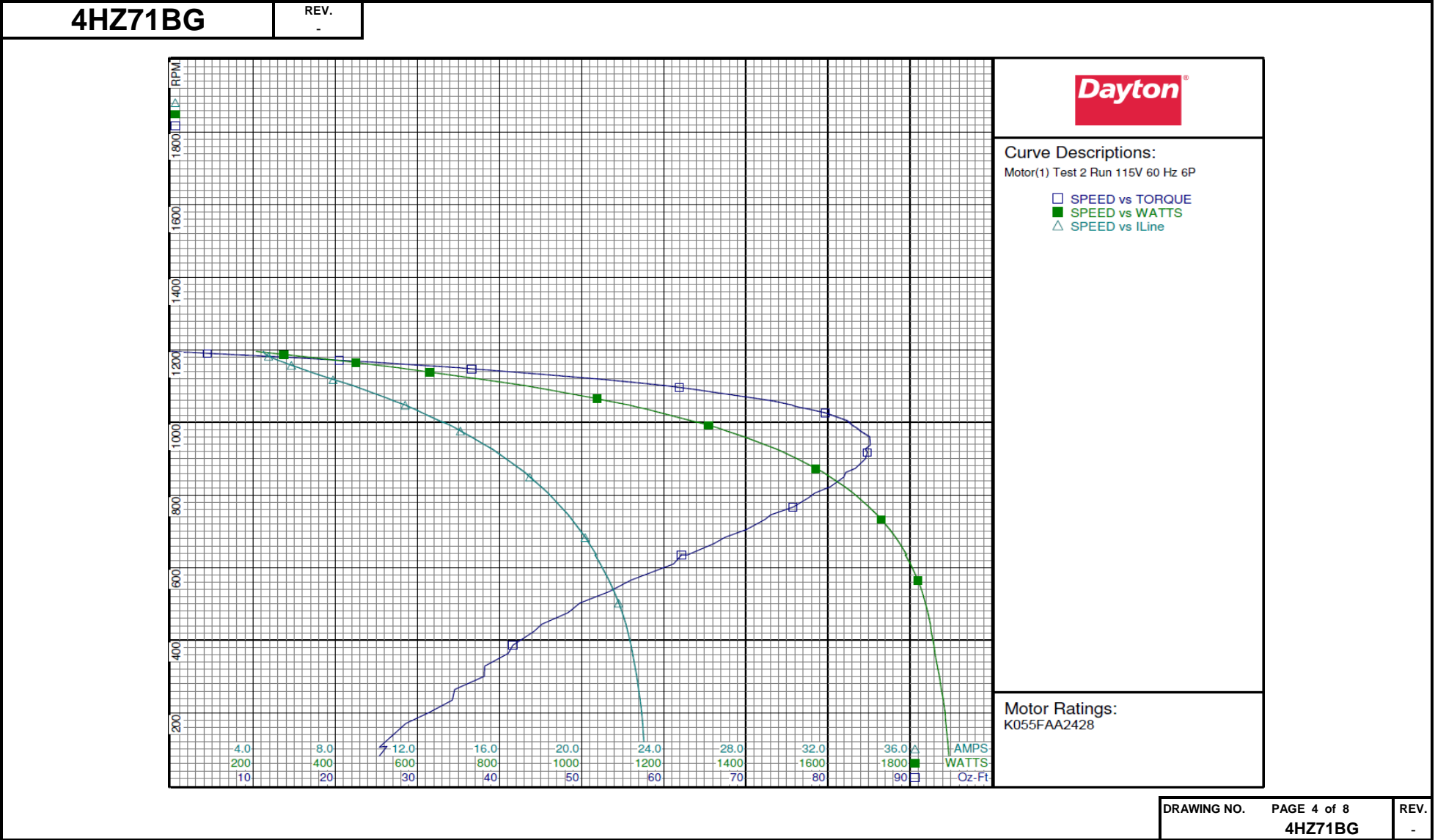
Test Conditions

Test Type: Run
Test Number: 2
Poles: 6
Volts: 115
Hz: 60
Rotation:
Special Cond:
Speed Conn:
TestBoard: CMD InLine Three Phase #3 Fixture #1
Run Cap: 17.5µfd
Start Cap: 0 µfd
Environment: 23.4 Deg C 54 % RH 967 hPa
Tested: 12/12/2016 8:59:15 AM
Tested By: Bribiesca, Griselda
Gear Ratio: 1:1
Bearing Friction: -0.47 Oz-Ft
Windage Torque: -0.96 Oz-Ft

Special Points	Vline (V)	Vaux (V)	Vcap (V)	Iline (A)	Watts	RPM	Tq (Oz-ft)	HP	Eff (%)	PF (%)
	115.0	357.3	382.5	4.49	207.3	1196	0.00	0.000	0.0	40.2
	115.0	357.0	381.9	4.49	214.7	1194	0.80	0.011	3.9	41.6
	115.0	356.6	380.6	4.52	232.4	1192	2.69	0.038	12.2	44.7
	115.0	355.1	377.6	4.58	260.5	1189	5.74	0.081	23.3	49.5
	115.0	352.0	371.4	4.75	310.7	1182	11.20	0.158	37.8	56.9
	115.0	345.5	361.6	5.06	375.7	1174	17.99	0.251	49.9	64.5
	115.0	337.9	351.5	5.51	450.8	1165	25.34	0.351	58.1	71.2
	115.0	329.8	341.4	6.05	530.3	1153	32.99	0.453	63.7	76.2
	115.0	325.8	336.3	6.35	570.8	1147	36.60	0.500	65.3	78.2
	115.0	313.8	322.0	7.26	685.0	1130	46.60	0.627	68.3	82.0
0.75 HP	115.0	299.3	305.2	8.41	814.4	1109	56.81	0.750	68.7	84.2
56 OZ-FT	115.0	300.6	306.6	8.31	803.4	1111	56.00	0.740	68.8	84.1
	115.0	293.7	298.7	8.86	862.9	1101	60.20	0.789	68.2	84.7
	115.0	287.6	291.9	9.31	910.1	1092	63.45	0.824	67.6	85.0
	115.0	259.6	261.4	11.41	1116.2	1048	75.65	0.944	63.1	85.1
	115.0	253.6	255.0	11.85	1156.9	1037	77.61	0.958	61.8	84.9
	115.0	228.8	229.7	13.58	1310.0	992	82.94	0.980	55.8	83.9
	115.0	213.3	214.5	14.63	1396.8	960	85.10	0.972	51.9	83.0
BDT OZ-FT	115.0	203.0	204.8	15.29	1448.9	937	85.16	0.950	48.9	82.4
	115.0	194.0	196.7	15.87	1492.1	917	84.81	0.926	46.3	81.7
	115.0	172.2	178.0	17.24	1588.7	862	82.18	0.843	39.6	80.1
	115.0	153.4	163.6	18.36	1661.5	805	78.41	0.752	33.7	78.7
	115.0	135.8	151.9	19.35	1720.0	745	73.04	0.648	28.1	77.3
	115.0	120.8	143.6	20.18	1765.4	683	67.43	0.548	23.2	76.1
	115.0	110.5	138.9	20.65	1788.3	635	62.06	0.469	19.6	75.3
	115.0	96.6	133.7	21.33	1819.5	565	55.99	0.377	15.4	74.2
	115.0	81.4	130.3	21.98	1843.8	475	48.36	0.274	11.1	72.9
	115.0	69.9	130.4	22.41	1858.4	386	41.64	0.191	7.7	72.1
	115.0	61.8	132.6	22.69	1871.8	300	38.12	0.136	5.4	71.7
	115.0	55.2	136.9	22.92	1885.5	201	31.44	0.075	3.0	71.5
	115.0	51.1	141.6	23.04	1893.1	107	26.26	0.033	1.3	71.5

DRAWING NO. PAGE 3 of 8
4HZ71BG REV.
-

Performance Data



Performance Data



4HZ71BG

REV.
-

Dayton Manufacturing Company

Motor Description

Model: K055HXFAA2428
Motor ID: 1
Poles: 6
Volts: 115/230
Frequency: 60
HP: .75
Speed: 1125
Phase: 1
Protector: 7AM036 A5

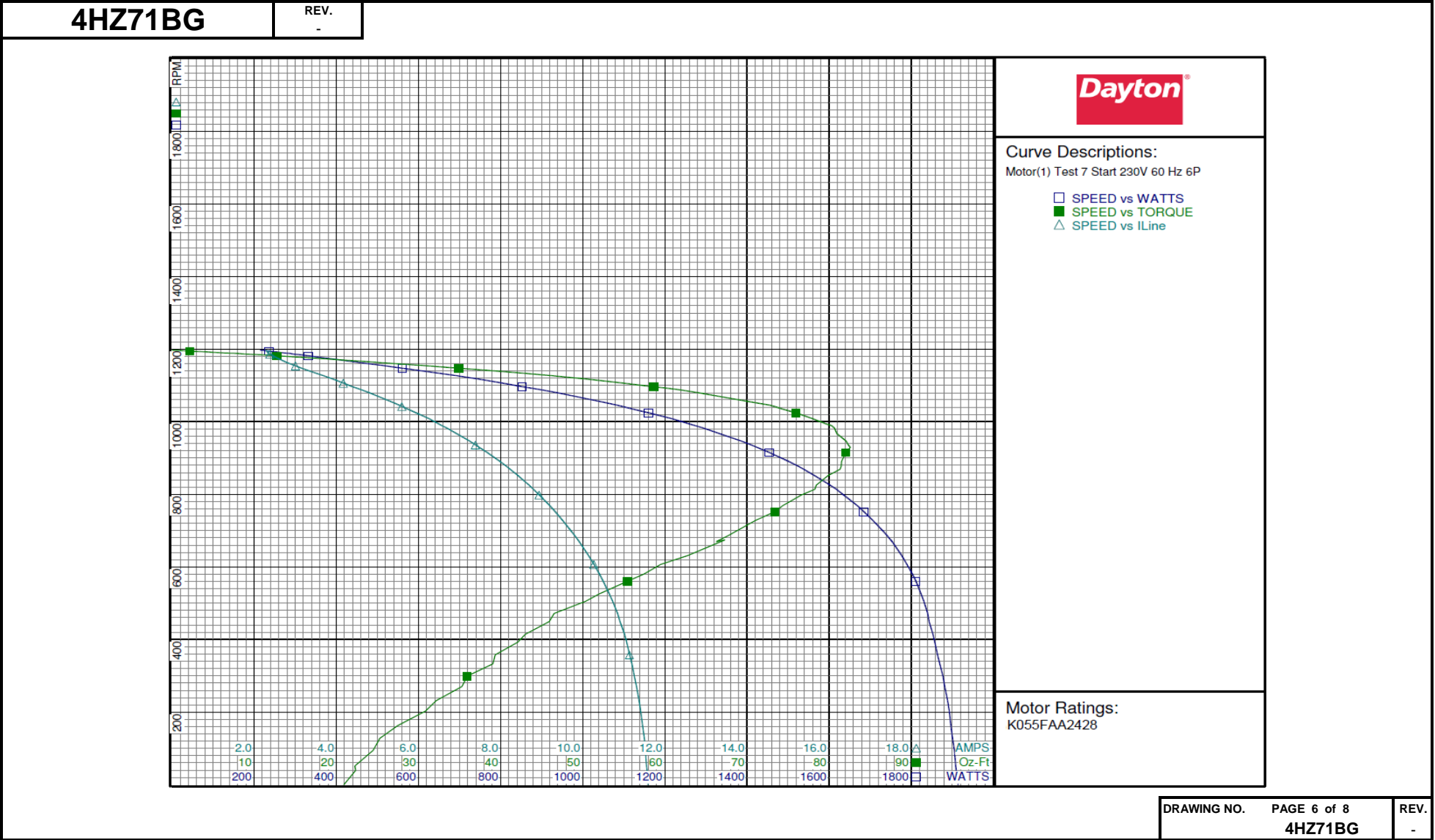
Test Conditions

Test Type: Start
Test Number: 7
Poles: 6
Volts: 230
Hz: 60
Rotation:
Special Cond:
Speed Conn:
TestBoard: CMD InLine Three Phase #3 Fixture #1
Run Cap: 17.5µfd
Start Cap: 0 µfd
Environment: 23.4 Deg C 54 % RH 967 hPa
Tested: 12/12/2016 9:14:06 AM
Tested By: Briebesca, Griselda
Gear Ratio: 1:1
Bearing Friction: -0.39 Oz-Ft
Windage Torque: -2.08 Oz-Ft

Special Points	Vline (V)	Vaux (V)	Vcap (V)	Iline (A)	Watts	RPM	Tq (Oz-ft)	HP	Eff (%)	PF (%)
	230.0	48.3	141.6	11.567	1909.7	39	22.34	0.010	0.4	71.8
	230.0	52.1	136.8	11.498	1900.6	127	25.30	0.038	1.5	71.9
	230.0	58.7	132.6	11.370	1888.6	231	32.18	0.089	3.5	72.2
	230.0	66.5	129.5	11.196	1869.4	332	39.06	0.155	6.2	72.6
	230.0	76.1	128.5	11.018	1853.1	414	43.01	0.212	8.5	73.1
	230.0	89.8	130.8	10.727	1830.7	505	50.35	0.303	12.3	74.2
	230.0	103.5	135.6	10.408	1803.1	579	57.41	0.396	16.4	75.3
	230.0	123.6	145.4	9.888	1750.9	674	67.30	0.540	23.0	77.0
	230.0	129.5	148.9	9.724	1731.9	698	68.65	0.570	24.6	77.4
	230.0	148.3	161.1	9.199	1668.8	768	74.36	0.680	30.4	78.9
	230.0	165.4	173.8	8.693	1602.5	825	78.44	0.770	35.9	80.1
	230.0	183.6	188.7	8.141	1525.1	877	81.47	0.850	41.6	81.5
	230.0	204.5	207.4	7.481	1424.7	929	82.58	0.913	47.8	82.8
	230.0	221.5	223.7	6.926	1333.1	967	80.94	0.932	52.1	83.7
	230.0	234.0	235.8	6.510	1262.8	993	79.77	0.943	55.7	84.3
	230.0	256.5	258.8	5.729	1120.7	1035	74.28	0.915	60.9	85.1
	230.0	266.4	269.2	5.384	1054.4	1052	70.90	0.888	62.8	85.1
	230.0	287.0	291.6	4.615	899.8	1087	61.85	0.801	66.4	84.8
	230.0	295.0	300.4	4.319	836.7	1099	57.33	0.750	66.9	84.2
	230.0	311.8	319.6	3.685	692.6	1127	46.26	0.620	66.8	81.7
	230.0	322.3	331.8	3.296	597.1	1141	38.27	0.520	65.0	78.8
	230.0	327.6	338.2	3.103	545.5	1149	33.54	0.459	62.8	76.4
	230.0	337.1	350.1	2.773	448.3	1164	24.46	0.339	56.4	70.3
	230.0	344.6	360.1	2.555	372.9	1175	17.07	0.239	47.8	63.4
	230.0	350.5	369.0	2.414	313.7	1184	10.79	0.152	36.2	56.5
	230.0	353.6	374.6	2.342	273.6	1189	6.44	0.091	24.8	50.8
	230.0	354.9	377.2	2.312	247.4	1193	3.45	0.049	14.8	46.5
	230.0	355.4	378.5	2.298	230.6	1195	1.62	0.023	7.4	43.6
	230.0	355.7	379.2	2.294	222.5	1197	0.72	0.010	3.4	42.2
	230.0	356.2	380.0	2.291	214.9	1197	0.00	0.000	0.0	40.8

DRAWING NO. PAGE 5 of 8
4HZ71BG REV.
-

Performance Data



Performance Data



4HZ71BG

REV.
-

Dayton Manufacturing Company

Motor Description

Model: K055HXFAA2428
Motor ID: 1
Poles: 6
Volts: 115/230
Frequency: 60
HP: .75
Speed: 1125
Phase: 1
Protector: 7AM036 A5

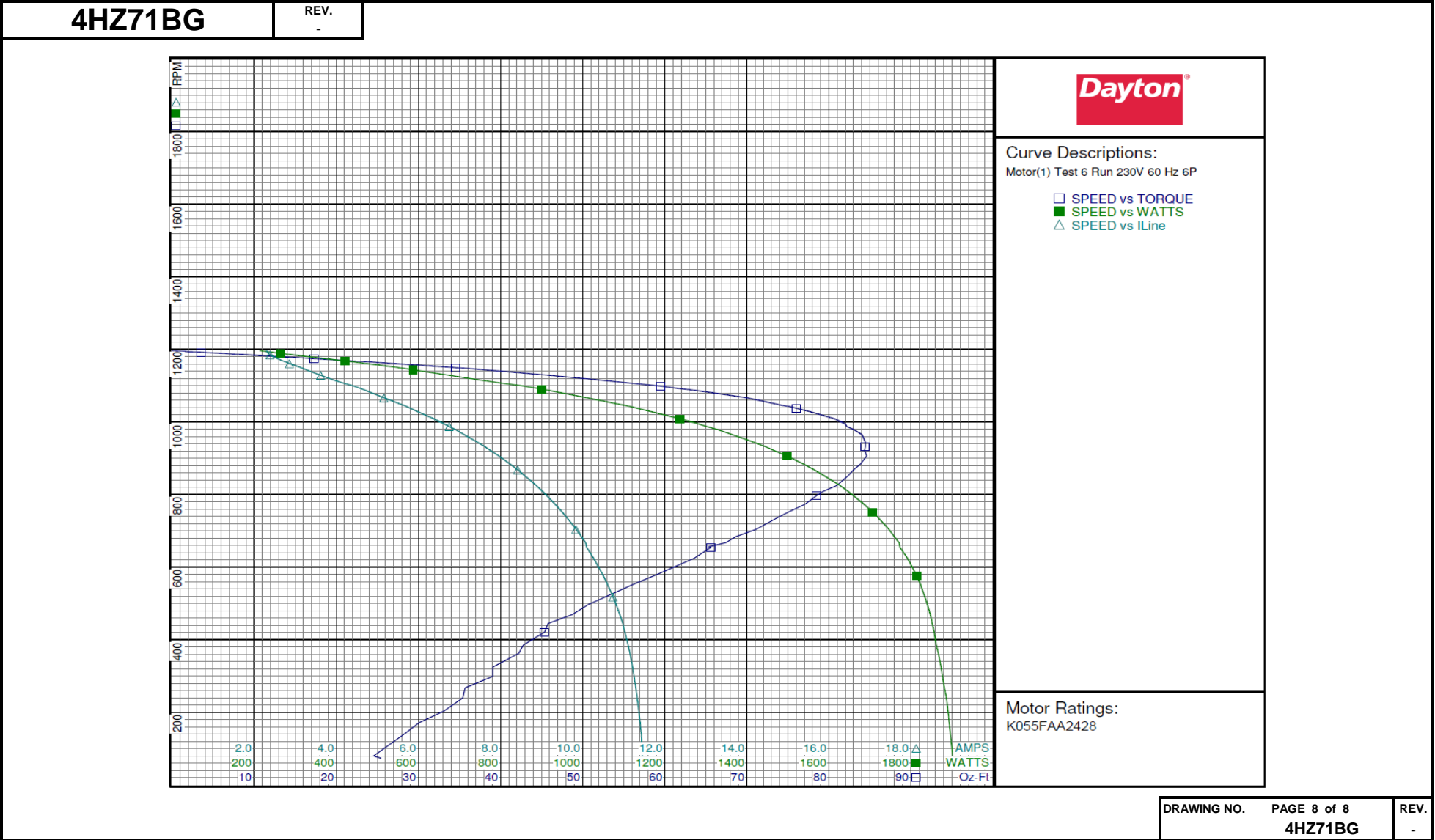
Test Conditions

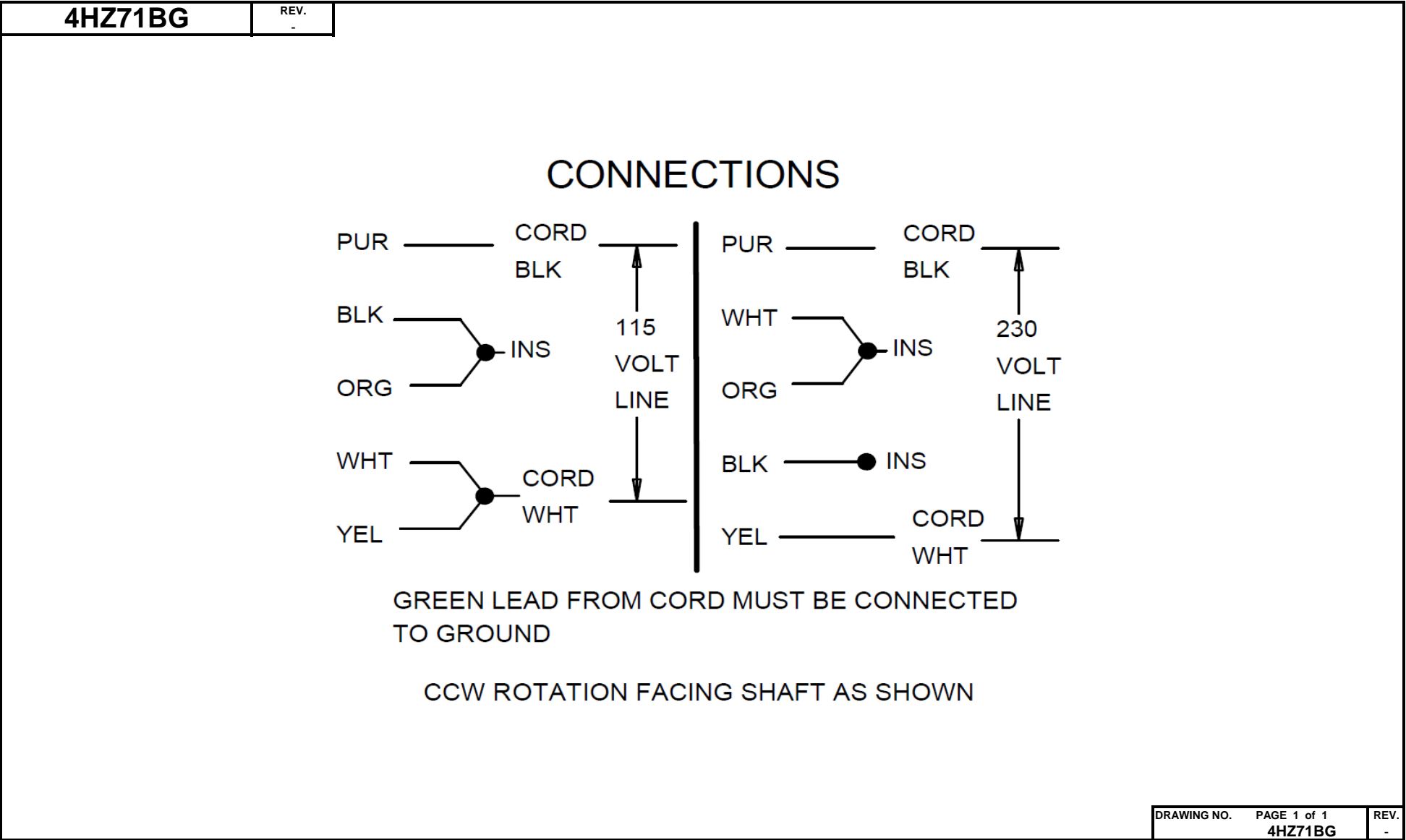
Test Type: Run
Test Number: 6
Poles: 6
Volts: 230
Hz: 60
Rotation:
Special Cond:
Speed Conn:
TestBoard: CMD InLine Three Phase #3 Fixture #1
Run Cap: 17.5µfd
Start Cap: 0 µfd
Environment: 23.4 Deg C 54 % RH 967 hPa
Tested: 12/12/2016 9:12:29 AM
Tested By: Bribiesca, Griselda
Gear Ratio: 1:1
Bearing Friction: -0.39 Oz-Ft
Windage Torque: -0.81 Oz-Ft

Special Points	Vline (V)	Vaux (V)	Vcap (V)	Iline (A)	Watts	RPM	Tq (Oz-ft)	HP	Eff (%)	PF (%)
	230.0	355.9	379.8	2.299	213.7	1196	0.00	0.000	0.0	40.4
	230.0	355.8	379.4	2.302	219.2	1196	0.50	0.007	2.4	41.4
	230.0	355.5	378.7	2.311	231.6	1193	2.00	0.028	9.1	43.6
	230.0	354.5	376.7	2.329	252.5	1190	4.62	0.065	19.3	47.1
	230.0	352.0	371.8	2.388	294.0	1185	9.20	0.130	32.9	53.5
	230.0	346.3	362.8	2.519	354.0	1177	15.35	0.215	45.3	61.1
	230.0	339.5	353.5	2.705	421.5	1168	22.10	0.307	54.4	67.7
	230.0	332.0	344.0	2.946	497.2	1157	29.39	0.405	60.8	73.4
	230.0	326.7	337.4	3.138	551.5	1149	34.56	0.473	63.9	76.4
	230.0	319.4	328.6	3.410	623.5	1137	41.39	0.560	67.0	79.5
56 OZ-FT	230.0	299.4	305.3	4.185	805.1	1106	56.00	0.738	68.3	83.6
	230.0	298.5	304.3	4.219	812.8	1105	56.55	0.744	68.3	83.8
0.75 HP	230.0	297.5	303.2	4.258	821.1	1104	57.07	0.750	68.1	83.8
	230.0	288.7	293.3	4.597	893.1	1092	61.70	0.802	67.0	84.5
	230.0	273.7	276.7	5.160	1010.1	1066	70.00	0.888	65.6	85.1
	230.0	258.6	260.7	5.718	1116.9	1042	75.26	0.934	62.4	84.9
	230.0	240.4	241.8	6.373	1238.0	1008	80.69	0.969	58.4	84.5
	230.0	225.5	227.0	6.888	1326.1	980	82.96	0.967	54.4	83.7
	230.0	203.5	205.9	7.619	1445.3	932	84.42	0.936	48.3	82.5
BDT OZ-FT	230.0	193.1	196.5	7.957	1497.5	906	84.59	0.913	45.5	81.8
	230.0	184.2	188.7	8.235	1538.5	883	83.79	0.881	42.7	81.2
	230.0	163.5	171.6	8.867	1626.3	825	80.98	0.795	36.5	79.7
	230.0	147.7	159.9	9.327	1685.1	773	77.07	0.709	31.4	78.5
	230.0	129.4	148.2	9.840	1745.5	704	71.14	0.596	25.5	77.1
	230.0	118.6	142.4	10.093	1772.6	656	65.32	0.510	21.5	76.4
	230.0	102.0	134.8	10.505	1814.0	576	58.63	0.402	16.5	75.1
	230.0	87.7	130.1	10.816	1839.7	496	50.65	0.299	12.1	74.0
	230.0	76.4	128.2	11.030	1855.8	421	45.35	0.227	9.1	73.2
	230.0	65.7	129.7	11.213	1872.7	324	39.05	0.151	6.0	72.6
	230.0	58.9	132.5	11.328	1885.9	239	35.39	0.101	4.0	72.4
	230.0	52.6	136.2	11.425	1895.6	139	28.18	0.046	1.8	72.1

DRAWING NO. PAGE 7 of 8
4HZ71BG
REV.
-

Performance Data



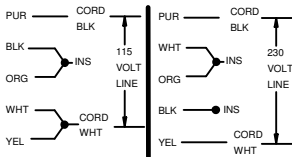


Dayton[®]

DIRECT DRIVE BLOWER MOTOR

HP: 3/4**VOLTS:** 115/230**AMPS:** 10.0/5.0**RPM:** 1100**DUTY:** CONT**SF:** 1.0**KVA CODE:** A**ENCL:** OAO**THERMALLY PROTECTED:** AUTO**MFG. NO.** **PROT. CODE** 7A010 **AVG. F.L.****MTR REF:** K55HXFAA-2428**PH:** 1**HZ:** 60**FR:** 48Y**INS CL:** B**AMB:** 40 °C**SFA:** 10.0/5.0**[BAR CODE]****Part No** 4HZ71BG**Disconnect Power Before Making Any Electrical
Connections or Changes**

CONNECTIONS

**GREEN LEAD FROM CORD MUST BE CONNECTED
TO GROUND****CCW ROTATION FACING SHAFT AS SHOWN****RU**[®]
E37403**SP**[®]
258501**Mfd for Dayton Electric Mfg. Co., Lake Forest, IL 60045 USA**