

2015

PRODUCT CATALOG
AND PRICE BOOK

The Dawn logo features the word "Dawn" in a black, elegant script font, with a small "TM" trademark symbol to its upper right. The text is contained within a white oval with a black border. Two orange, curved swooshes extend from the left and right sides of the oval, curving upwards and outwards.

*Dawn*TM

YOUR NEEDS

OUR GOAL

The KwikCut is designed and manufactured in the USA to meet the high standards of the professional market.

KwikCut Tools — Professional Quality



KwikCut™
Professional Quality

Patent # 6370780

Patent # 4336652



Spring Action and Original KwikCut™

These multi-purpose cutters are designed to make quick work of Polyethylene pipe, thin wall PVC, hose, tubing and most other non-metal items. Our blades are manufactured at the Dawn Industries plant using a proprietary blade making system from the longest lasting, highest quality metal. This ensures exceptional quality control throughout the production process and creates a blade that is sharper and holds its edge longer for more clean, precise cuts. Together with the tough fiberglass reinforced nylon handles KwikCut is the highest quality cutter on the market at any price.

100 and 135 series models are available with orange or black handles as well as stainless steel or PTFE coated blades. SS200 and SL200 are only available with black handles and stainless blades.

Sizes of Cut:

- 100 Series: Cuts 1/8" – 1 1/4" OD
- 135 Series: Cuts 1/8" – 1 3/8" OD
- 200 Series: Cuts 1/8" – 1 7/8" OD

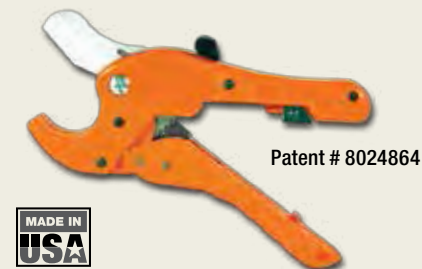
See price list for specific products numbers



KwikCut™ Combo Pak

KwikCut Combo Pak combines the precision and durability of the Original and Spring Action KwikCut multi-purpose cutter with a handcrafted leather carrying pouch and a replacement blade. Available in Stainless Steel only. Made in the USA in our Colorado factory

Part Number: SL135-0-SS COMBO
T135-0-SS COMBO



KwikCut™ Ratchet Cutter

Patent # 8024864

Our patented Double Action Ratchet gives you plenty of extra power when cutting heavy walled pipe. Our precision milled blade provides a clean cut with little effort. Efficient one-hand operation has a dual push button safety release and locking mechanism. Cuts 1/8" to 1 5/8" OD. Made in the USA in our Colorado factory.

Part Number: R125



Hand Saw

For cutting large PVC or ABS pipe, with optimum tooth design. No other saw cuts faster or straighter than KwikCut PVC Saw. Available in 9", 13" and 18" lengths.

Part Number: GS09F | GS13F | GS18F



Rope Saw

- Cuts plastic, wood, rubber and more
- Cuts in places you can't get to with a larger saw and cuts in any direction
- Ergonomic grips allow you to use your hands instead of just your fingers

Part Number: RS32



Wire Stripper/Cutter

- Narrow nose fits into tight places
- Spring-loaded action for self-opening
- Shear-type cutting blades for square, clean cuts
- Hardened steel with precision ground paired stripping holes for 10 to 22 gauge wire
- Wire looping and bending holes

Part Number: WS1022



Ergonomic Wire Strippers

- Same features as our standard wire stripper, plus:
- Double dipped handles with air cushion pockets provide a comfortable grip, reducing hand fatigue
 - Strips 10-20 gauge wire
 - Built-in bolt cutters cleanly cut 6-32 and 8-32 bolts

Part Number: WS1022-ERGO



Hack Saw

KwikCut brings you the finest high performance hack saw you can find. High tension design helps blades last longer and is more comfortable to use than other frames. It also offers more versatility and can make either standard or flush cuts. Convenient blade storage in top Frame bar.

Part Number: HS12



Mini Hack Saw

- Ergonomic handle made with tough resin
- Quick change blade

Part Number: MH004



KwikConnect™

Professional Quality

In repeated high pressure testing (up to 400 psi) the KwikConnect never leaked or failed. In every test, the pipe burst without one KwikConnect failure. KwikConnects are designed for use wherever standard, ASTM D 2609, insert fittings are used.*

*Designed for use on 80, 100 and 160 psi pipe which meets ASTM D 2239 pressure rated polyethylene pipe standard as well as Ag drip pipe.

KwikConnect Features Include

- Installs in seconds
- No clamps needed
- Fast, easy and secure
- Reduces labor
- Saves dollars
- Dependable and reliable



Expanding lock ring provides superior holding power by biting into the pipe and expanding to grip securely in high pressure or hammer situations.

PTFE coated Buna O-rings for ease of installation and long sealing life.

KwikConnect is made from the finest engineered resins available on the market today.

Patent Number 8328241



KwikConnect™ Coupler 1"

Part Number: KCC1429-010



KwikConnect™ Reducing Tee

Part Number: KCRT1402-130
KCRT1402-131



KwikConnect™ Reducing Elbow

Part Number: KCRE1407-130
KCRE1407-131



KwikConnect™ Male Adapter 1" x 1" MPT

Part Number: KCMA1436-010



KwikConnect™ Tee 1"

Part Number: KCT1401-010



KwikConnect™ Elbow 1"

Part Number: KCE1406-010



KwikConnect™ End of Line 1"

Part Number: KCEL1429-129

KwikTap™

Professional Quality

- No tools required
- No snaps or straps
- Significantly less flow restriction than inserts
- Installs 6 x faster than inserts with worm screw clamps
- Superior versatility (remove, move, replace)

See price list for specific part numbers



Pre-Installed Swing/Drip Connections

Independent Lab Test Results

Flow Rate 13.6 gpm @ 40psi

Flow Restriction 41% less than standard insert tee

Quick Burst Test 392 psi @ 62 seconds — The KwikTap fitting did not fail



Patent # 7150289

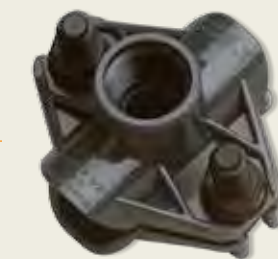
KwikSeal™

Professional Quality

A superior saddle tee for Polyethylene that eliminates the hassles and problems associated with insert fittings.

- No rubber gaskets
- Lower profile saddle tee
- T-Bolt and Nut made of fiberglass reinforced nylon
- No clamps to rust or corrode
- Molded barb seal

See price list for specific part numbers



Patent # 478189

Zero Flow Restriction Withstands Over 400 PSI Without Leaking

2 1/2" length protects seal area if pipe is kinked or damaged near saddle tee.



Coring Tool and Nut Driver

Part Number:
HCT-COMBO Hole Coring Tool
ND375 Nut Driver



KwikPuller™

Professional Quality

Our Pipe Pullers start working in seconds. Slip the pipe into the puller and you're ready to go. **It's that simple.**

This patented method seals the pipe as it bends and enters the ground, eliminating the need for tape.

Save on labor, fuel and machine time.

1" Heavy Duty Dual Pipe Puller



Part Number: DPP01

Patent # 7654774



Watch the Video



Snap this icon on your Smartphone to watch the video

1 ¼" and 1 ½" Heavy Duty Pipe Puller



Part Number: DPP15

KwikLink



Part Number: KL111

2" Heavy Duty Pipe Puller



Part Number: DPP02

KwikTools™

Professional Quality



Crimpers

- Forged from high quality tool steel for heavy usage
- Perfect for installing or removing pinch clamps as well as cutting wire strapping, pulling nails and more

Part Number:
CT108 Length 8" | CT112 Length 12"



Groove Joint Pliers

- Jaws have zinc phosphate finish for rust protection
- Parallel jaws grip in all positions

Part Number:
GJP100 Length 10" | GJP120 Length 12"
GJP160 Length 16"



Dead Blow Hammer

- Tough, non-marring striking face
- Weighs 1 ½" pounds
- No bounce

Part Number: DBH15



KwikSplice Direct Bury

- Kit includes gel, tube and UL listed wire connector
- Environmentally friendly non-drying GreenPro sealant
- UV rated



Part Number: DBS-1412-L | DBS-812-T



KwikSplice Wire Connectors

- Ribbed Cap provides positive-grip for fast easy installation
- Narrow Design allows more room in tight boxes
- Fixed Square Spring provides more secure gripping on conductors
- Deep, Wide-Throated Skirt protects against flash-over and turned-back strands

See Price List for specific part numbers



KwikSplice Wings Wire Connectors

- Unique Contoured Wings act as a built-in wrench providing maximum torque
- Deep, Wide-Throated Skirt protects against flash-over and turned-back strands
- Fixed Square-Wire Spring threads create a secure pressure grip

See Price List for specific part numbers



Nipple Extractor

- Quickly removes both ¾" and ½" PVC or Polyethylene risers and nipples
- Extra sharp, long lasting gripping blades

Part Number: NE005



Four Way Key

- Fits stopcocks, sillcocks and valves
- Heat-treated steel

Sizes:
¼", ⅜", ⅝", 11/32" internal square

Part Number: KEY04





Utility Knife – Folding

- Durable construction
- Accepts most standard blades
- Convenient pocket clip
- Retractable blade securely folds into handle

Part Number: UK200



Snap Off Utility Knife

- Great for light-duty cutting and trimming
- Always have a fresh sharp blade
- Eight snap-off segments per blade

Part Number: S0123

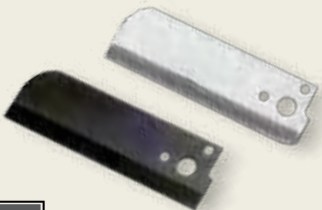


Turf Knife "The Claw"

- Cutlery grade steel blade
- Comfortable non-slip grip
- Fixed hook serrated blade knife for quick clean cutting of sod or turf grass, roofing material, and floor coverings

Part Number: TK300

Replacement Blades



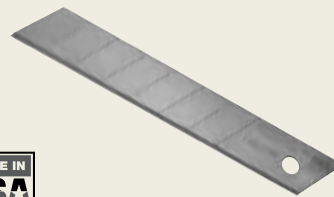
KwikCut (Original and Advance)

Part Number: BT100 | BT135 | SSB200
BT100-SS | BT135-SS



Hack Saw

Part Number: HSB18 | HSB24 | HSB32



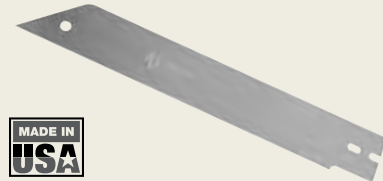
Snap-off Utility Knife

Part Number: BS0123 | 10 Pack



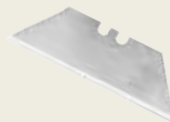
Ratchet Cutter

Part Number: BR125



Hand Saw

Part Number: BGS09F | BGS13F | BGS18F



Utility Knife

Part Number: BUK100 | 5 Pack

KwikRepair™
Professional Quality



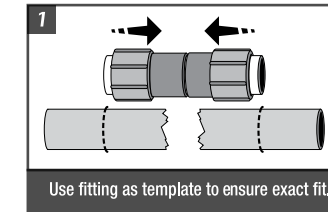
Patent # 6318761



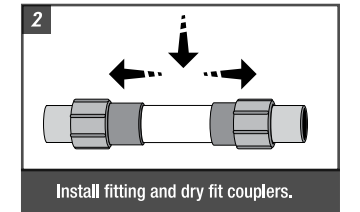
KwikRepair™ makes in-line installation or repair of PVC lines faster, easier, stronger and more cost efficient with just 1 fitting. The KwikRepair sleeves slide onto the pipe, once primer and solvent is applied to the end of the fitting and end of the pipe being repaired, eliminating bending or flexing of the pipe. Made in the USA in our Colorado factory.

- Do the job with just one fitting
- Permanent solvent weld seal
- Effective for limited space applications
- No Thrust Blocking or Staking needed

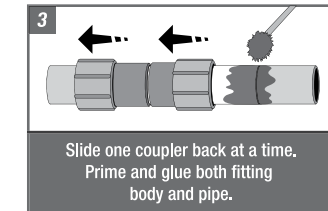
See price list for specific part numbers and sizes



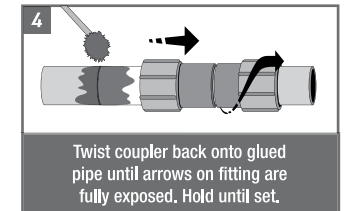
Use fitting as template to ensure exact fit.



Install fitting and dry fit couplers.



Slide one coupler back at a time. Prime and glue both fitting body and pipe.



Twist coupler back onto glued pipe until arrows on fitting are fully exposed. Hold until set.

KwikRepair Working Pressure Ratings @ 73° F

Diameter	Pressure	Diameter	Pressure
3/4"	360psi	2"	210psi
1"	338psi	2 1/2"	225psi
1 1/4"	278psi	3"	135psi
1 1/2"	248psi	4"	165psi

KwikSlip™
Professional Quality

KwikSlip™ is a one-piece glue fitting for PVC to Swing or Drip pipe

- Faster to install
- No threads to leak
- Save on labor cost



KwikSlip Tee x 17mm Drip

Part Number: STD17-007
STD17-010



KwikSlip "Y" Tee x Swing

Part Number: SY007
SY010



KwikSlip Tee x Swing

Part Number: ST005
ST007
ST010



KwikSlip Spigot or Hub x 17mm Drip

Part Number: SCD17-131
SCD17-168



KwikSlip Spigot or Hub x Swing

Part Number: SC101
SC131
SC168

KwikSnap™
Professional Quality

KwikSnap™ is a glue-on PVC "Y" Saddle for use with 3/4" and 1" PVC to Swing.

- Do the job with just one fitting
- Fitting outlet molded at 30° angle to prevent kinking of the Swing pipe



KwikSnap

Part Number: KSY007
KSY010



KwikAdapt™

Professional Quality

The KwikAdapt line of products offers fast, secure connections from Polyethylene pipe to Swing pipe in a one-piece design. The barb and spike combination keeps the Swing pipe in place even under pressure surges.

- Faster to install
- Save on labor cost
- Strong and convenient
- Barb and Spike design



Swing Insert Tee

Part Number: SW1401-099 | SW1401-129



End of Run

Part Number: SW1429-099 | SW1429-129



Drip Adapter

Part Number: DMA17-050



Swing Tee x 1/2" MPT

Part Number: SW1403-003



Swing Elbow

Part Number: SW1413-073 | SW1413-099



Swing Tee

Part Number: SW1401-003



Swing Coupling

Part Number: SW1429-003



Swing Adapter

Part Number: SW1436-073 | SW1436-099

KwikAccessories™

Professional Quality



KwikBucket Storage Organizers

- High-impact plastic bucket with heavy duty handle
- Comes with three large sorting trays
- Comes with a very rugged and durable water resistant lid

Part Number: B0111 | B0T01



KwikCap - Orange

- Ideal marker and cover for drain valves, stop and waste valves

Part Number: ICAP-2 | ILID-2

KwikCap Lighting - Brown

- Ideal moisture resistant marker and cover for landscape lighting splices

Part Number: ICAP-2DRY | ILID-2DRY



KwikTote "Industrial Strength"

- Made of High Density Polyethylene
- Resistant to Acids, Harsh Chemicals and Oils
- Lightweight, Tough and Durable
- Great truck organizers

Part Number: PT005



KwikGlue Tote

- Can be used for quart/pint cans
- Carries glue and primer together (cans not included)
- Eliminates spills, waste and loose cans

Part Number: GT200



KwikBucket Apron

- Features 22 pockets
- Increases storage capacity
- Fits all 3.5 and 5 gallon buckets
- Secures permanently with attachment accessories

Part Number: BA20



KwikCut Tool Pouch

Dawn's leather tool pouches are great for holding KwikCut Pipe cutters, wire strippers or any other tools that fit. Made of high quality leather.

Part Number: CP10



KwikCut Cutters



Sold in Quantities: 1 Each – 50 Units Per Box

Part Number	Description	List Price Each
T100	Black handle/ PTFE blade-Cuts to 1 ¼" OD	\$16.936
T100-O	Orange handle/ PTFE blade-Cuts to 1 ¼" OD	\$16.936
T100-SS	Black handle/ Stainless-Cuts to 1 ¼" OD	\$17.686
T100-O-SS	Orange handle/ Stainless-Cuts to 1 ¼" OD	\$17.686
SL100-T	Spring Action Black/ PTFE-Cuts to 1 ¼" OD	\$20.276
SL100-O-T	Spring Action Orange/ PTFE-Cuts to 1 ¼" OD	\$20.276
SL100-SS	Spring Action Black/ Stainless-Cuts to 1 ¼" OD	\$21.026
SL100-O-SS	Spring Action Orange/ Stainless-Cuts to 1 ¼" OD	\$21.026
T135	Black handle/ PTFE blade-Cuts to 1 ½" OD	\$19.005
T135-O	Orange handle/ PTFE blade-Cuts to 1 ½" OD	\$19.005
T135-SS	Black handle/ Stainless-Cuts to 1 ½" OD	\$19.753
T135-O-SS	Orange handle/ Stainless-Cuts to 1 ½" OD	\$19.753
SL135-T	Spring Action Black/ PTFE-Cuts to 1 ½" OD	\$22.343
SL135-O-T	Spring Action Orange/ PTFE-Cuts to 1 ½" OD	\$22.343
SL135-SS	Spring Action Black/ Stainless-Cuts to 1 ½" OD	\$23.094
SL135-O-SS	Spring Action Orange/ Stainless-Cuts to 1 ½" OD	\$23.094
SS200	Black handle/ Stainless-Cuts to 1 ⅞" OD	\$20.946
SL200	Spring Action Black/ Stainless-Cuts to 1 ⅞" OD	\$24.286

Combo Paks



Sold in Quantities: 1 Each – 25 Units Per Box

SL135-O-SS COMBO	Spring Action Orange/ Stainless; Extra blade; Pouch	\$40.619
T135-O-SS COMBO	Orange/ Stainless blade; Extra blade; Pouch	\$37.281

Ratchet Cutter



Sold in Quantities: 1 Each – 25 Units Per Box

R125	Double Action 1 ⅝" Ratchet Cutter	\$55.091
-------------	-----------------------------------	----------

Ergonomic Wire Stripper



Sold in Quantities: 1 Each

WS1022-ERGO	Super Duty Ergonomic Wire Stripper	\$28.091
--------------------	------------------------------------	----------

Wire Stripper



Sold in Quantities: 1 Each

WS1022	Wire Stripper	\$11.855
---------------	---------------	----------

Hack Saws



Sold in Quantities: 1 Each

HS12	12" Heavy Duty Hack Saw	\$44.812
MH004	10" Mini Hack Saw	\$8.495

Rope Saw



Sold in Quantities: 1 Each

RS32	32" Wire Rope Saw	\$8.235
-------------	-------------------	---------

Hand Saw



Sold in Quantities: 1 Each

GS09F	9" PVC/ ABS Hand Saw	\$23.286
GS13F	13" PVC/ ABS Hand Saw	\$26.126
GS18F	18" PVC/ ABS Hand Saw	\$29.534

Utility Knives



Sold in Quantities: 1 Each

S0123	Snap Off Blade Knife	\$4.274
TK300	Turf Knife	\$15.164
UK200	Utility Knife – Folding	\$16.534

Replacement Blades



Sold in Quantities: 1 Each

BT100	PTFE Blade for T100/ SL100T	\$6.452
BT100-SS	Stainless Steel Blade for T100 SS/ SL100 SS	\$7.202
BT135	PTFE Blade for T135/ SL135T	\$7.066
BT135-SS	Stainless Steel Blade for T135 SS/ SL135 SS	\$7.804
SSB200	Stainless Steel Blade for SS200/ SL200	\$8.019
BR125	Replacement Blade for R125 Ratchet Cutter	\$27.546
BGS09F	9" Hand Saw Blade	\$13.832
BGS13F	13" Hand Saw Blade	\$14.421
BGS18F	18" Hand Saw Blade	\$18.451
BUK100	5 Pack Utility Blades	\$2.606
BS0123	10 Pack Tube Snap off Blades	\$5.624
RB50-818	8" x 0.050" x 18 TPI Reciprocating Saw Blade	\$6.020

Sold in Quantities: 10 Per Pack

HSB18	18 TPI High Strength Hack Saw Blade	\$2.816/blade
HSB24	24 TPI High Strength Hack Saw Blade	\$2.816/blade
HSB32	32 TPI High Strength Hack Saw Blade	\$2.816/blade



KwikTools



Sold in Quantities: 1 Each

GJP100	Groove Joint Plier 10" Length	\$27.571
GJP120	Groove Joint Plier 12" Length	\$35.842
GJP160	Groove Joint Plier 16" Length	\$60.655
DBH15	Deadblow Hammer 1 1/2 lbs.	\$19.288
CT108	8" Pinch Clamp Crimping Tool	\$11.657
CT112	12" Pinch Clamp Crimping Tool	\$16.157
NE005	1/2" - 3/4" Nipple Extractor	\$6.893
KEY04	4 Way Silcock key	\$6.286

KwikPullers



Sold in Quantities: 1 Each

DPP01	1" Heavy Duty Dual Pipe Puller	\$87.732
DPP15	1 1/4" - 1 1/2" Heavy Duty Pipe Puller	\$216.840
DPP02	2" Heavy Duty Pipe Puller	\$262.838

KwikLink



Sold in Quantities: 1 Each

KL111	3/8" Quick Link for DPP	\$5.514
--------------	-------------------------	---------

Accessories



Sold in Quantities: 1 Each

CP10	Leather Tool Pouch for KwikCut (all sizes)	\$9.837
PT005	Easy Carry Parts Tray	\$12.035
BL111	Bucket Lid	\$9.474
B0111	Bucket organizer with 3 large trays	\$46.047
B0T01	Large Bucket parts tray	\$10.979
BA20	22 Pocket Bucket Apron	\$28.950
GT200	Cement and Solvent Holder	\$11.992

KwikConnect



Sold in Quantities: 10 Per Bag - 200 Units Per Box

KCC1429-010	KwikConnect Coupling 1"	\$1.870
KCRT1402-130	KwikConnect Reducing Tee 1" x 1" x 1/2" FPT	\$2.730
KCRT1402-131	KwikConnect Reducing Tee 1" x 1" x 3/4" FPT	\$2.730
KCT1401-010	KwikConnect Tee 1"	\$3.110

Sold in Quantities: 10 Per Bag - 250 Units Per Box

KCE1406-010	KwikConnect Elbow 1"	\$2.390
KCEL1429-129	KwikConnect End of Line 1"	\$1.340
KCMA1436-010	KwikConnect Male Adapter 1" x 1" MPT	\$1.600
KCRE1407-130	KwikConnect Reducing Elbow 1" x 1/2" FPT	\$1.760
KCRE1407-131	KwikConnect Reducing Elbow 1" x 3/4" FPT	\$1.960

KwikTap Saddles

Standard Sizes



Sold in Quantities: 10 Per Bag - 200 Units Per Box

KT007C	Poly Tool-less Saddle: 3/4" x 1/2" FPT	\$2.760
KT007D	Poly Tool-less Saddle: 3/4" x 3/4" FPT	\$2.760
KT007SW-E	Poly Tool-less Saddle: 3/4" x Swing Elbow	\$3.045
KT007SW-S	Poly Tool-less Saddle: 3/4" x Swing Adapter	\$3.045
KT007-DMA17	Poly Tool-less Saddle: 3/4" x 17mm Drip Adapter	\$3.045
KT010C	Poly Tool-less Saddle: 1" x 1/2" FPT	\$2.806
KT010D	Poly Tool-less Saddle: 1" x 3/4" FPT	\$2.806
KT010SW-E	Poly Tool-less Saddle: 1" x Swing Elbow	\$3.091
KT010SW-S	Poly Tool-less Saddle: 1" x Swing Adapter	\$3.091
KT010-DMA17	Poly Tool-less Saddle: 1" x 17mm Drip Adapter	\$3.091
KT012C	Poly Tool-less Saddle: 1 1/4" x 1/2" FPT	\$4.475
KT012D	Poly Tool-less Saddle: 1 1/4" x 3/4" FPT	\$4.475
KT012SW-E	Poly Tool-less Saddle: 1 1/4" x Swing Elbow	\$4.759
KT012SW-S	Poly Tool-less Saddle: 1 1/4" x Swing Adapter	\$4.759
KT015C	Poly Tool-less Saddle: 1 1/2" x 1/2" FPT	\$5.395
KT015D	Poly Tool-less Saddle: 1 1/2" x 3/4" FPT	\$5.395

Sold in Quantities: 10 Per Bag - 100 Units Per Box

KT015SW-E	Poly Tool-less Saddle: 1 1/2" x Swing Elbow	\$5.679
KT015SW-S	Poly Tool-less Saddle: 1 1/2" x Swing Adapter	\$5.679

KwikTap Saddles

Metric or Low Density Sizes



Sold in Quantities: 10 Per Bag - 200 Units Per Box

KT025C	Poly Tool-less Saddle: 25mm x 1/2" FPT	\$2.760
KT025D	Poly Tool-less Saddle: 25mm x 3/4" FPT	\$2.760
KT025SW-E	Poly Tool-less Saddle: 25mm x Swing Elbow	\$3.045
KT025SW-S	Poly Tool-less Saddle: 25mm x Swing Adapter	\$3.045
KT025-DMA17	Poly Tool-less Saddle: 25mm x 17mm Drip Adapter	\$3.045
KT032C	Poly Tool-less Saddle: 32mm x 1/2" FPT	\$2.806
KT032D	Poly Tool-less Saddle: 32mm x 3/4" FPT	\$2.806
KT032SW-E	Poly Tool-less Saddle: 32mm x Swing Elbow	\$3.091
KT032SW-S	Poly Tool-less Saddle: 32mm x Swing Adapter	\$3.091
KT032-DMA17	Poly Tool-less Saddle: 32mm x 17mm Drip Adapter	\$3.091



Part Number	Description	List Price Each
KwikSeal Saddles		
Sold in Quantities: 10 Per Bag – 250 Units Per Box		
75C	Poly Saddle: 3/4" x 1/2" FPT	\$2.125
75D	Poly Saddle: 3/4" x 3/4" FPT	\$2.215
100C	Poly Saddle: 1" x 1/2" FPT	\$2.249
100D	Poly Saddle: 1" x 3/4" FPT	\$2.408
125C	Poly Saddle: 1 1/4" x 1/2" FPT	\$3.408
125D	Poly Saddle: 1 1/4" x 3/4" FPT	\$3.567
HCT-COMBO	Hole Coring Tool: Fits 1/2" and 3/4" FPT sold each	\$15.879
ND375	9/16" Nut Driver sold each	\$3.464



KwikAdapt Tees and End of Runs		
Sold in Quantities: 10 Per Bag – 250 Units Per Box		
SW1401-099	Poly Insert Tee: 3/4" x Swing Tee	\$1.215
SW1401-129	Poly Insert Tee: 1" x Swing Tee	\$1.318



Sold in Quantities: 25 Per Bag – 1,000 Units Per Box		
SW1429-099	Poly Coupler Adapt 3/4" PE to Swing	\$1.114
SW1429-129	Poly Coupler Adapt 1" PE to Swing	\$1.170

KwikAdapt Swing Elbows		
Sold in Quantities: 50 Per Bag – 1,000 Units Per Box		
SW1413-073	Poly Elbow: 1/2" MPT x Swing Elbow	\$0.285
SW1413-099	Poly Elbow: 3/4" MPT x Swing Elbow	\$0.285



Swing and Threaded Swing Tee		
Sold in Quantities: 50 Per Bag – 1,000 Units Per Box		
SW1401-003	Poly Swing Tee	\$0.545
SW1403-003	Poly Swing Tee x 1/2" MPT	\$0.625



Swing and Drip Adapters		
Sold in Quantities: 50 Per Bag – 1,000 Units Per Box		
DMA17-050	Poly Straight: 1/2" MPT x 17mm Drip Adapter	\$0.474
SW1436-073	Poly Straight: 1/2" MPT x Swing Adapter	\$0.285
SW1436-099	Poly Straight: 3/4" MPT x Swing Adapter	\$0.285



Swing Coupler		
Sold in Quantities: 50 Per Bag – 1,000 Units Per Box		
SW1429-003	Poly Swing Coupler	\$0.431



KwikSlip Fittings		
Sold in Quantities: 10 Per Bag – 250 Units Per Box		
SC-131	PVC Glue Fitting: 1" Spigot x 3/4" Hub to Swing	\$0.738
SC-168	PVC Glue Fitting: 1 1/4" Spigot x 1" Hub to Swing	\$0.875
SCD17-131	PVC Glue Fitting: 3/4" Spigot x 1" Hub to 17mm Drip	\$0.748
SCD17-168	PVC Glue Fitting: 1 1/4" Spigot x 1" Hub to 17mm Drip	\$0.885
ST-007	PVC Glue Fitting: 3/4" Tee to Swing	\$0.875
ST-010	PVC Glue Fitting: 1" Tee to Swing	\$1.170
STD17-007	PVC Glue Fitting: 3/4" Tee x 17mm Drip	\$0.885
STD17-010	PVC Glue Fitting: 1" Tee x 17mm Drip	\$1.180
SY-007	PVC Glue Fitting: 3/4" Y to Swing	\$1.240
SY-010	PVC Glue Fitting: 1" Y to Swing	\$1.411



Sold in Quantities: 25 Per Bag – 250 Units Per Box		
ST-005	PVC Glue Fitting: 1/2" Tee to Swing	\$0.817
SC-101	PVC Glue Fitting: 3/4" Spigot x 1/2" Hub to Swing	\$0.716

KwikSnap Saddles		
Sold in Quantities: 25 Per Bag – 250 Units Per Box		
KSY-007	PVC Glue Snap-On Saddle: 3/4" Y to Swing	\$0.829
KSY-010	PVC Glue Snap-On Saddle: 1" Y to Swing	\$0.988



KwikRepair Tees		
Sold in Quantities: 10 Units Per Box		
KRT 401-005	PVC Repair Tee: 1/2" x 1/2" x 1/2"	\$6.361
KRT 401-007	PVC Repair Tee: 3/4" x 3/4" x 3/4"	\$7.645
KRT 401-010	PVC Repair Tee: 1" x 1" x 1"	\$9.224



Sold in Quantities: 5 Units Per Box		
KRT 401-012	PVC Repair Tee: 1 1/4" x 1 1/4" x 1 1/4"	\$16.777
KRT 401-015	PVC Repair Tee: 1 1/2" x 1 1/2" x 1 1/2"	\$18.549
KRT 401-020	PVC Repair Tee: 2" x 2" x 2"	\$28.546

Couplers		
Sold in Quantities: 10 Units Per Box		
KRC 429-005	PVC Repair Coupler: 1/2" x 1/2"	\$2.988
KRC 429-007	PVC Repair Coupler: 3/4" x 3/4"	\$3.555
KRC 429-010	PVC Repair Coupler: 1" x 1"	\$4.158
KRC 429-012	PVC Repair Coupler: 1 1/4" x 1 1/4"	\$7.747
KRC 429-015	PVC Repair Coupler: 1 1/2" x 1 1/2"	\$8.520



Sold in Quantities: 5 Units Per Box		
KRC 429-020	PVC Repair Coupler: 2" x 2"	\$13.142
KRC 429-025	PVC Repair Coupler: 2 1/2" x 2 1/2"	\$19.174
KRC 429-030	PVC Repair Coupler: 3" x 3"	\$24.513
KRC 429-040	PVC Repair Coupler: 4" x 4"	\$43.016



Wire Connectors



Part Number	Description	List Price Each
Sold in Quantities: 100 Per Bag		
WNG-GN-C	Green Wire Nut	\$0.169
WNS-OR-C	Orange Wire Nut	\$0.065
WNS-RD-C	Red Wire Nut	\$0.125
WNS-YW-C	Yellow Wire Nut	\$0.078
Sold in Quantities: 500 Per Bag		
WNS-OR-D	Orange Wire Nut	\$0.042
WNS-RD-D	Red Wire Nut	\$0.101
WNS-YW-D	Yellow Wire Nut	\$0.058
Sold in Quantities: 1,000 Per Bag		
WNS-B1-M	Black Wire Nut High Temperature	\$0.142
WNS-BL-M	Blue Wire Nut	\$0.030
WNS-GY-M	Gray Wire Nut	\$0.029

Wing Wire Connectors



Part Number	Description	List Price Each
Sold in Quantities: 100 Per Bag		
WNW-BL-C	Blue Wing Wire Nut	\$0.226
WNW-RD-C	Red Wing Wire Nut	\$0.159
WNW-TN-C	Tan Wing Wire Nut	\$0.152
WNW-YW-C	Yellow Wing Wire Nut	\$0.126
Sold in Quantities: 250 Per Bag		
WNW-GY-H	Gray Wing Wire Nut	\$0.186
Sold in Quantities: 500 Per Bag		
WNW-RD-D	Red Wing Wire Nut	\$0.123
WNW-TN-D	Tan Wing Wire Nut	\$0.121
WNW-YW-D	Yellow Wing Wire Nut	\$0.103

Direct Bury



Part Number	Description	List Price Each
Sold in Quantities: 25 Per Bag		
DBS-812-T	Direct Bury Splice 8-12	\$2.015
Sold in Quantities: 50 Per Bag		
DBS-1412-L	Direct Bury Splice 14-12	\$1.440

KwikCap – Orange



Part Number	Description	List Price Each
Sold in Quantities: 25 Per Bag		
ICAP-2	2" Direct Access Housing and Lid	\$5.207
ILID-2	Universal 2" Replacement Lid	\$3.053

KwikCap Lighting – Brown

Part Number	Description	List Price Each
Sold in Quantities: 25 Per Bag		
ICAP-2DRY	2" Direct Access Housing and Lid	\$5.211
ILID-2DRY	Universal 2" Replacement Lid	\$3.053

Available in HI VIZ orange and landscape blend-in brown

Return Policy

- Customer must submit a Return Form, found on our website, for an RMA number to be issued.
- Goods can only be returned within 12 months of purchase.
- Dawn™ Industries will only accept saleable returns of goods, determined upon inspection.
- Returned goods will be charged a minimum 15% restocking fee.
- Customers will be responsible for any and all return shipping fees.
- Credit memo will be issued for product only.
- For warranty issues, please refer to warranty policies on our website.

Freight Policy

Prices are F.O.B. Arvada, Colorado, freight prepaid to destination specified in the order. Dawn Industries charges a shipping and handling fee on each order, which is applied at time of order and reflected on customer's invoice. Dawn Industries covers shipping and handling for standard ground delivery within the Continental United States and Canada on orders over \$1,500 before tax (including any backorders). Dawn Industries does not cover shipping and handling for orders shipping outside of the U.S. or Canada.

Minimum Order Policy

In an effort to consolidate processing costs and increase order efficiency, Dawn strongly encourages replacing frequent small orders with larger planned purchases.

- Minimum order – \$200
- International minimum order – \$500 USD
- Order in box/bag quantities to avoid broken box/bag charges

We understand that our customers may occasionally wish to place smaller orders, in such cases, a minimum \$10 special handling fee will be added. Broken box/bag orders will be charged a \$10 fee. We encourage you to support our policies so that we may continue to offer superior customer service at great prices.

Terms

2% 15 Net 30 days from ship date. Prices subject to change without notice.





5055 W. 58th Ave.
Arvada, Colorado 80002

1.303.296.4041 Phone
1.800.321.7246 Toll-Free
1.303.295.6604 Fax

dawnindustries.com