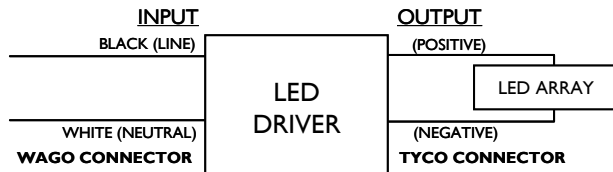


## Electrical Specifications

Max. Output Power (W)	Output Voltage (V)	Output Current (A)	Operating Temp. Range (°F/°C)	Input Current at 120V (A)	Max. Input Power (W)	Inrush Current (A <sub>pk</sub> /μs)	Max. THD (%)	Min. Power Factor	Surge Protection (KV)	Weight (Lbs)	Envir. Protection Rating
17	2.8~24.0	0.7	-40°~140°F (-40~60°C)	0.18	21.5	-	20	0.9	2.0	0.15/70	UL Dry & Damp

### Wiring Diagram



Input is WAGO 2-position wire trap connector – use 18AWG solid or tinned stranded.  
 Output is Tyco 2mm AMP CT connector (292132-2) – recommend harness 1365323-1 (supplied via Future Lighting Solutions, 1-888-589-3662)

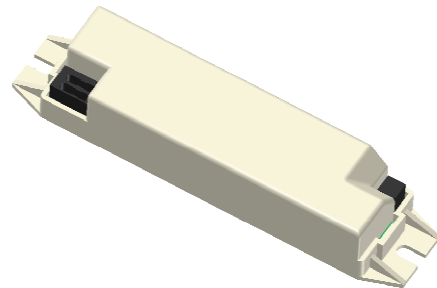
### Standard Lead Length

	in.	cm.
Black		
White		
Blue		
Red		
Green		
Violet		

### Maximum Wiring Distance (at full load)

Wire Size (AWG)	Distance (feet)
26	8
24	13
22	21
20	34
18	54
16	85
14	137
12	210
10	357

### Enclosure



	in. (mm)
Case Length	4.33 (109)
Case Width	1.20 (30)
Case Height	0.87 (22)
Mounting Length	4.76 (120)
Mounting Width	0 (0)
Overall Length	5.24 (132)



UL Class 2  
E220165



7310\_S-000  
3426-32

Revised 05/30/2012

# Xitanium LED120A0700C24F

<b>LED120A0700C24F</b>	
Brand Name	XITANIUM
Driver Type	Electronic
Input Voltage	120
Input Frequency	50/60Hz
RoHS	No
Approbations	UL, CSA
Status	Active

## Installation & Application Notes:

### Section I – Physical Characteristics

- 1.1 LED Driver shall be installed inside an electrical enclosure.
- 1.2 Wiring inside electrical enclosure shall comply with 600V/105°C rating or higher.
- 1.3 Housing is made of UL94-V0 flame retardant plastic. White color.

### Section II – Performance

- 2.1 LED Driver is UL Class 2 power unit as per UL1310. It is also listed in the UL Sign Accessory Manual.
- 2.2 LED Driver is certified by UL for use in a dry location.
- 2.3 LED Driver has Class A sound rating.
- 2.4 LED Driver tolerates sustained open circuit and short circuit output conditions without damage.
- 2.5 LED Driver maximum allowable case temperature is 85°C – see product label for measurement location.
- 2.6 LED Driver complies with FCC rules and regulations, as per Title 47 CFR Part 15 Non-Consumer (Class A).

### Section III – UL Conditions of Acceptability (File E220165)

When installed in the end product, consideration shall be given to the following:

- 3.1 This component has been judged on the basis of the required spacings in the Standard for Class 2 Power Units, UL 1310, Fourth Edition, which would cover the component itself if submitted for Listing.
- 3.2 The supply terminals and connectors are suitable for factory wiring only of solid or tinned stranded No. 18 AWG conductors.
- 3.3 The equipment was submitted and tested for a maximum manufacturer's recommended ambient (T<sub>mra</sub>) of 25°C.
- 3.4 This unit is provided with a Class 105(A) insulation system. A temperature test is required when the unit is installed within an electrical enclosure or raceway.
- 3.5 Leakage current measurements shall be performed when more than four LED drivers are used in the equipment or when the LED driver is used in combination with other equipment in the end-use product.
- 3.6 The unit is intended for installation inside an electrical enclosure.

### Revision History:

Rev No.	Date	Description	Approval	Remarks
1.1	01/16/2012	* Add Envir. Protection Rating	N.T.	
1.2	03/02/2012	*Modify Part #(Remove Dashes)	N.T.	
1.3	05/16/2012	*Add Approbations: UL, CSA	N.T.	

The information presented in this document is not intended as any commercial offer and does not form part of any quotation or contract.

