

CONSTRUCTION MASTER™ PRO TRIG

ADVANCED FEET-INCH-FRACTION CONSTRUCTION-MATH CALCULATOR WITH FULL TRIGONOMETRIC FUNCTION



Model 4080

Use it on the jobsite or in your office or truck.

Built-in Functions Include:

- **Stairs:** Solves "not-to-exceed" Riser Height and Stairwell Opening
- **Studs:** Find number On-center for an entered Length
- **Drywall, Siding, Panels:** Find number of sheets for an Area
- **Plus:** Compound Miter Cuts, Arched Rake-Walls and Equal Sided Polygons
- Includes English and Spanish User's Guides

Easy to use and powerful, the **CONSTRUCTION MASTER PRO TRIG** provides the building professional with complete trigonometric function to help builders and designers quickly solve construction math problems. Work in and convert between feet-inch-fractions and metric, instantly calculate complex construction challenges for stair layouts, roof and framing and much, much more.

RUN 120-3 $\frac{3}{4}$
FEET INCH

Work in and convert between building dimensions

TRIG 57-9 $\frac{1}{2}$
FEET INCH

Built-in right-angle solutions for stair, roof and rafter layouts

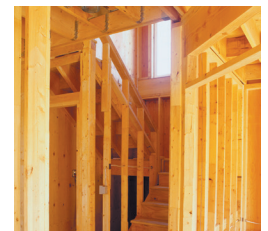
SINE 53.0748°

Trig functions for Sine, Cosine, Tangent; Inverse angles and dimensions

ARC 39 $\frac{3}{4}$
INCH

Circular calculations for Arcs, Area, Circumference, Segments

CONSTRUCTION MASTER PRO TRIG



Product Specifications • Construction Master Pro Trig

Size:	5.6" x 3.0" x 0.6" (143 mm x 76 mm x 16 mm)
Weight:	4.5 oz. (127.5 gm) - Includes Case and Field Reference Guide
Power:	Two 3-volt (LR44/A76) Long-life Batteries
Display:	11 Digits (7 normal, 4 fractions) with Full Annunciators
LCD Dimensions:	0.625" x 2.5" (16 mm x 64 mm)
Accuracy:	10 Digit Internal Accuracy

Included with Every Construction Master Pro Trig:

Protective Hard Slide Cover; Long-life Batteries (Two LR44); Quick Reference Guides and Pocket Reference Guides; Complete, easy-to-follow User's Guide.

Full One-Year Limited Warranty:

All Calculated Industries calculators and electronic tools are covered by a Full One-Year Limited Warranty against defects in materials and workmanship. The full text of each warranty is published in the documentation accompanying each product and at www.calculated.com. Calculated Industries reserves the right to make changes in the materials and specifications of products without notice.



**CALCULATED
INDUSTRIES®**

4840 Hytech Drive
Carson City, NV 89706
1-800-854-8075

Visit our website at:
www.calculated.com

CONSTRUCTION MASTER™ PRO TRIG

ADVANCED FEET-INCH-FRACTION CONSTRUCTION-MATH CALCULATOR WITH FULL TRIGONOMETRIC FUNCTION

MODEL 4080

Compare Construction Master Features

	CM Pro Trig 4080	CM Pro Desktop 44080	CM Pro 4065	Measure Master Pro 4020
Dimensional Math and Conversions				
Feet-Inch-Fraction, Inch Fraction, Yards	☑	☑	☑	☑
Decimal Feet (10ths, 100ths), Decimal Inches	☑	☑	☑	☑
Preset Fractions (1/2" through 1/64")	☑	☑	☑	☑
D:M:S, Decimal Degree Entry and Conversions	☑	☑	☑	☑
Full Metrics (m, cm, mm)	☑	☑	☑	☑
Right Angle Solutions				
Complete Right Angle/Rafter Calculations	☑	☑	☑	
Pitch Key (Slope and Grade)	☑	☑	☑	
Rise, Run, Diagonal/Common Rafters Key	☑	☑	☑	
Hip/Valley Key	☑	☑	☑	
Jack Rafters Key	☑	☑	☑	
Irregular Hip/Valley and Jacks Key	☑	☑	☑	
Rafter Cutting angles (Plumb, Cheek and Level Cuts)	☑	☑	☑	
Stair Layout Key	☑	☑	☑	
Stair (Advanced - "Not to Exceed" Riser Height and Stairwell Opening)	☑	☑	☑	
Diagonal Key	☑	☑	☑	
Expanded Rake-Wall	☑	☑	☑	
Arched Rake-Wall	☑	☑	☑	
Studs: Find number On-center	☑	☑	☑	
Area and Volume Solutions				
Square and Cubic	☑	☑	☑	☑
Roof - Bundles, Squares, 4x8 Sheets, Pitch, Plan Area	☑	☑	☑	
Drywall, Siding and Paneling 4x8, 4x9 and 4x12	☑	☑	☑	
Column/Cone Area and Volume	☑	☑	☑	
Basic Circular Calculations	☑	☑	☑	☑
Advanced Circular Calculations	☑	☑	☑	☑
Weight per Volume Conversions	☑	☑	☑	☑
Length, Width and Height Keys	☑	☑	☑	☑
Blocks, Footings		☑	☑	
Special Functions				
Trigonometric Function Keys (Sine, Cosine, Tangent, Arccosine, Arctangent)	☑	☑		
Board Feet	☑	☑	☑	☑
Works as a Regular Calculator (+, -, x, ÷, +/-, %, π, 1/x, x², √x)	☑	☑	☑	☑
User-Definable Preferences	☑	☑	☑	☑
Entry Editing Backspace Key	☑	☑	☑	☑
Cost per Unit (Total costs based on unit price)	☑	☑	☑	☑
Equal Sided Polygon	☑	☑	☑	
Compound Miters	☑	☑	☑	
Crown Angle	☑	☑	☑	
Additional Capabilities and Characteristics				
Paperless Tape	☑	☑	☑	☑
Number of Memories	4	4	4	4

Dedicated Keys and Functions Make It Easy To Use

Diag — Instant Diagonal/Square-ups

Pitch, Rise, Run — Rafter, Roof Layouts; Slope, Rake-Wall, Polygon

Comp Miter — Compound Miter for exact cut angles; Crown Angle

Stair — Risers, Treads, Stringer, Incline Angle, Stairwell Opening

U.S./Metric Units — Work in Feet-Inch-Fractions, Yards, Meters, Millimeters, Centimeters

Conv — Perform Conversions; Access Secondary Functions

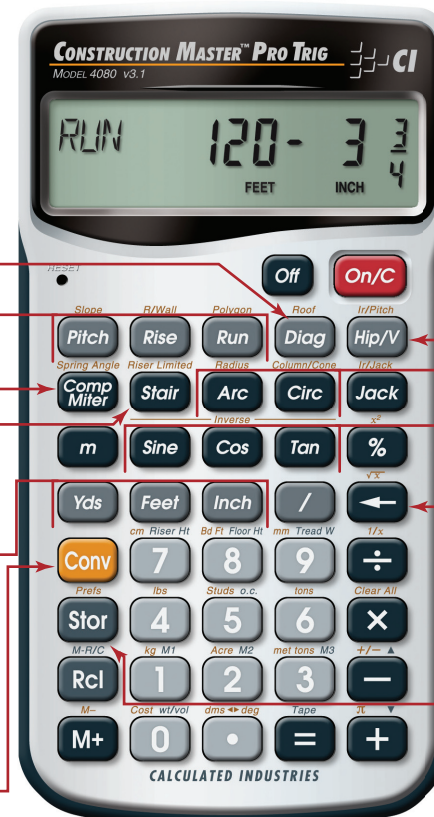
Hip/V, Jack — Fast Rafter Dimensions; Irregular Pitch, Irregular Jacks

Arc, Circ — Advanced Circular Calculations including Column/Cone

Trigonometric Functions — Sine, Cosine, Tangent; Arcsine, Arccosine, Arctangent

Backspace Key — Easily edit entries

Stor/Prefs — Store and set preferences for Fractions, Riser Height, Floor Height, Studs On-center and More!



Architects • Builders • Contractors • Draftspersons • Engineers

Construction Master™ and Calculated Industries® are trademarks and registered trademarks of Calculated Industries, Inc. © 2023. All rights reserved.