

Approximate Overall Dimensions  
2<sup>3</sup>/<sub>8</sub>" x 1<sup>5</sup>/<sub>8</sub>" x 1<sup>1</sup>/<sub>2</sub>"

**90-290Q THRU 90-295Q RELAYS – WR/RBM TYPE 84**

Used for Switching Single or Two Speed Fan Motors, Solenoids, Relays, Resistive Loads and General Purpose Switching

**FEATURES**

- Compact, totally enclosed design.
- For heating and cooling applications and general switching.
- Quiet, reliable and economical.

**SPECIFICATIONS**

Temperature Range . . . . .	-40°F to 150°F
Mechanical Life (no load) . . . . .	1,000,000 operations, 60 operations/min.
Electrical Life (rated load) . . . . .	100,000 operations, 6 operations/min.
	Load test making inrush rating (0.4 to 0.5 P.F.); breaking 100% continuous rating (0.64 to 0.8 P.F.)
Weight (approximate) . . . . .	2.5 oz.
Agency . . . . .	U.L. file number E12139 or E22381 C.S.A. file number LR13360
Coils, Frequency . . . . .	50 / 60 Hz
Coils, Insulation . . . . .	Class B
Coils, Termination . . . . .	1/4" Quick Connect
Coils, Operate . . . . .	85% of nominal coil voltage; 110% maximum safe operate
Coils, Duty Cycle . . . . .	Continuous

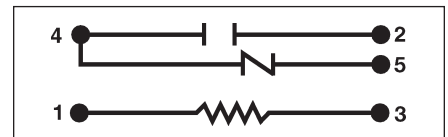
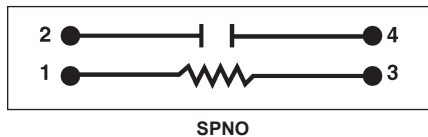
**SINGLE POLE NORMALLY OPEN (SPNO), SINGLE POLE DOUBLE THROW (SPDT)**

Model Number		Coil Voltage AC (50/60 Hz)	Res DC OHMS	Coil Data		Inrush VA
SPNO	SPDT			Nom. Current MA	Nominal VA Sealed	
90-290Q	90-293Q	24	90	125	3	4
90-291Q	90-294Q	120	2,000	25	3	4
90-292Q	90-295Q	240	7,000	12.5	3	4

**CONTACT RATING 125 / 250 VAC**

Inductive	Resistive
8 Amps Continuous 25 Amps. Inrush	16 Amps Continuous

**WIRING DIAGRAMS**



TRANSFORMERS / RELAYS