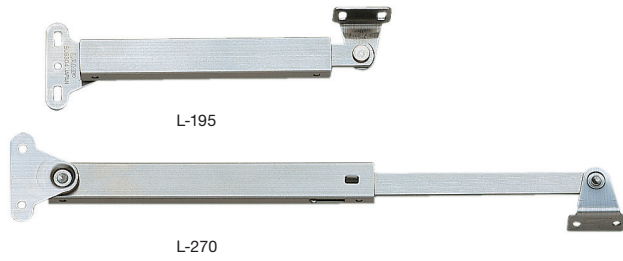


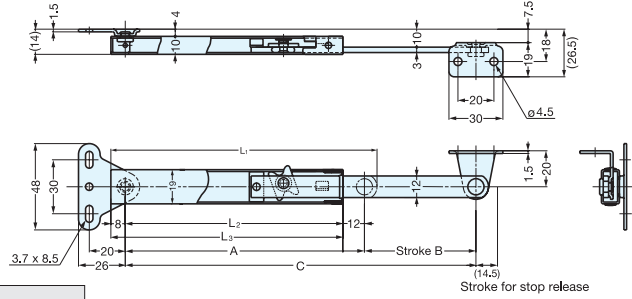
# LID STAY



L

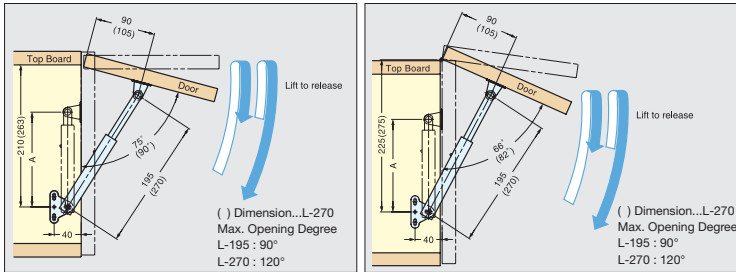


- Holds lid or panel in fully opened position.
- Lift up lid to release.
- Can be installed individually or in pairs.
- Non-Handed : Can be installed on left or right side.
- Load Capacity : 15 kg (33 lbs)/each.



With Concealed Hinge

With Piano/Butt Hinge



\*Lid stay must be installed parallel to the sidewall.

Material	Finish
304 Stainless Steel	Satin

Item No.	L <sub>1</sub>	L <sub>2</sub>	L <sub>3</sub>	(A)	(B)	C	Door Height (mm)	Weight (g)	Box (pcs)	Carton (pcs)
L-195	148 ( 5-53/64" )	121	129	133 ( 5-15/64" )	62	195 ( 7-43/64" )	250~350 ( 9-27/32"~13-25/32" )	125	10	100
L-270	185 ( 7-9/32" )	158	166	170 ( 6-11/16" )	100	270 ( 10-5/8" )	320~500 ( 12-19/32"~19-11/16" )	150		

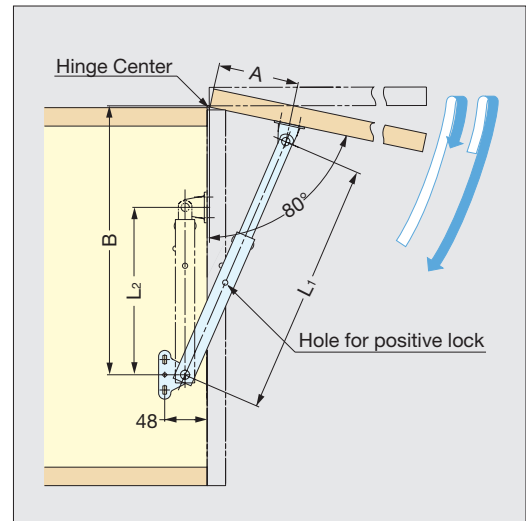
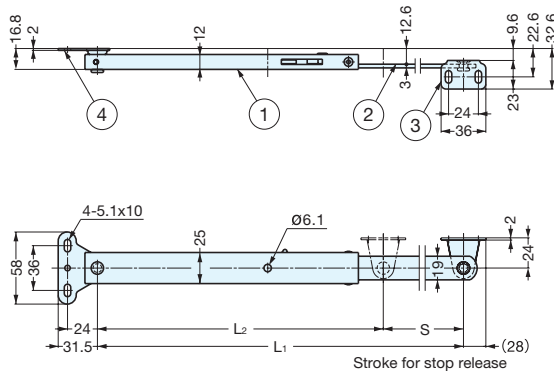
# LID STAY



LB



- Holds lid or panel in fully opened position.
- Lift up lid to release.
- Can be installed individually or in pairs.
- Non-Handed : Can be installed on left or right side.



No	Part Name	Material	Finish
①	Housing	304 Stainless Steel	Satin
②	Arm		
③	Housing Bracket		
④	Arm Bracket		

Item No.	L <sub>1</sub>	L <sub>2</sub>	S	A	B	Load Capacity (kg)	Box (pcs)	Carton (pcs)
LB-200	200 ( 7- 7/8" )	(155) ( 6-3/32" )	45	56	219	30 (66 lbs)	10	40
LB-350	350 ( 13-25/32" )	(230) ( 9-3/64" )	120	128	364	25 (55 lbs)		20
LB-500	500 ( 19-11/16" )	(305) (12-1/64" )	195	195	510	20 (44 lbs)		20