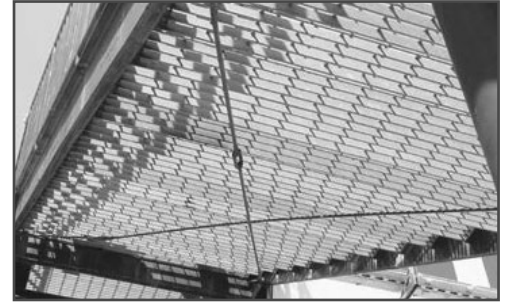


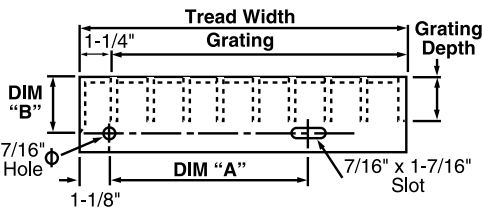
# BAR GRATING

## STAIR TREADS

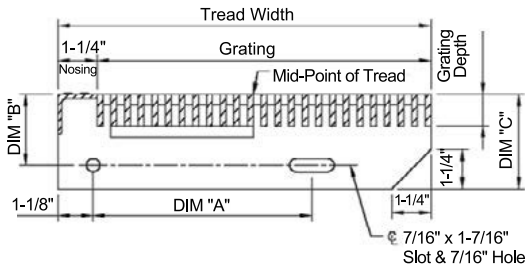


### STAIR TREAD DETAILS

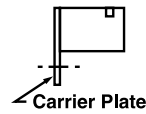
#### CHECKER PLATE NOSING - STEEL GROOVED NOSING - ALUMINUM



#### TREADS WITH CARRIER PLATES

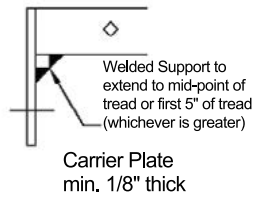


#### TREAD WITH CARRIER PLATE

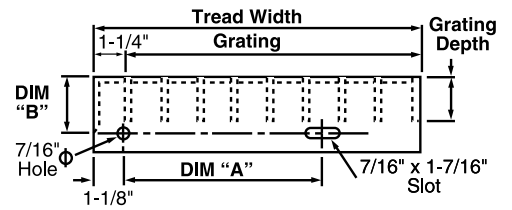


Steel - 2-1/2" x 3/16", or  
3" x 3/16" depending  
upon DIM.B  
Aluminum - 3" x 3/16"

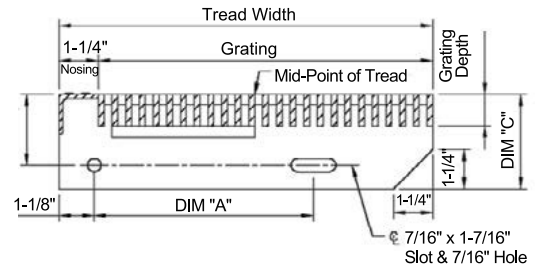
#### TREAD WITH WELDED SUPPORT



#### CAST ABRASIVE NOSING - STEEL & ALUMINUM



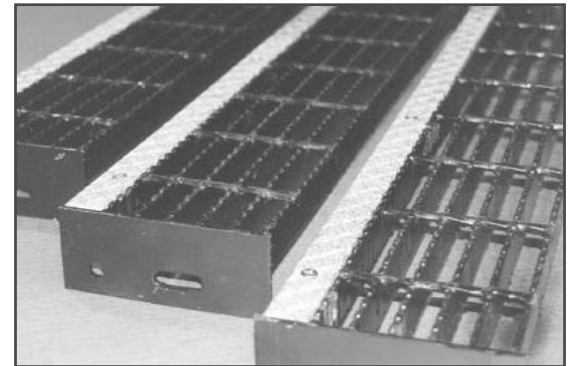
#### TREADS WITH CARRIER PLATES



### STANDARD TREAD WIDTHS AND END PLATE DIMENSIONS

Number of Bearing Bars	Width (includes nosing*)				End Plate Dimensions		
	W, SG, SGF Series	SGI Series	R, AR Series	Plank Series	Dimension A	Dimension B	
						1	1-1/2
5	6-3/16	6-1/4	6-11/16	6-3/8	2-1/2	1-3/4	2-1/4
6	7-3/8	7-7/16	8	7-1/4	4-1/2	1-3/4	2-1/4
7	8-9/16	8-5/8	9-5/16	8-3/4	4-1/2	1-3/4	2-1/4
8	9-3/4	9-13/16	10-5/8	9-15/16	7	1-3/4	2-1/4
9	10-15/16	11	11-15/16	11-1/8	7	1-3/4	2-1/4
10	12-1/8	12-3/16	13-1/4	12-3/8	7	1-3/4	2-1/4

\*Table of widths based on 3/16" thick bearing bars and standard bar spacing 1-3/16" cc (1-1/8" face-to-face for riveted grating.)  
NOTE: Refer to drawings above for A and B Dimensions • NOTE: DIM, B = 2-1/4" for ALL aluminum treads



### SUGGESTED BEARING BAR SIZES\*

Aluminum Treads				Steel Treads			
SGF, SG, AR Series	Max. Tread Length*		SGI Series Plank Series	Maximum Tread Length*	W, R Series	Max. Tread Length*	
	Plain	Serrated				Plain	Serrated
1" x 3/16"	2'-4"	2'-2"	1" I-Bar / Plank	2'-6"	3/4" x 3/16"	2'-4"	1'-11"
1-1/4" x 3/16"	2'-10"	2'-7"	1-1/4" I-Bar / Plank	3'-0"	1" x 3/16"	3'-5"	2'-10"
1-1/2" x 3/16"	3'-6"	3'-2"	1-1/2" I-Bar / Plank	3'-6"	1-1/4" x 3/16"	4'-8"	4'-2"
1-3/4" x 3/16"	4'-3"	3'-10"	1-3/4" I-Bar / Plank	4'-5"	1-1/2" x 3/16"	5'-6"	5'-3"

\*Maximum tread length based on 400-lb. concentrated load on nosing and 4 bearing bars at center of tread length.  
NOTE: Since a serrated connecting bar does not reduce the strength of the grating, R and AR Series treads may always be selected from the "Plain" column.