



Protecting Your People

Forklift Safety

Forklifts are used to move and handle materials safely and efficiently within a warehouse environment. Promoting and maintaining safety when using this machinery is of the utmost importance in these busy surroundings.

IRONguard™ forklift safety products prevent collisions, safely increase machine operation efficiency, and reduce maintenance hazards; keeping your workplace safe and running smoothly.

At IRONguard™, we raise the bar in forklift safety.



COLLISION AVOIDANCE

ForkliftSpotter™ Safe Zone

- Front Spotter
- Side Spotter
- Rear Spotter

Ergo BackUp Handle

Mirrors

Safe-Bump



SAFE & EFFICIENT OPERATION

Accu-Tilt

Accu-Height

Lift Truck Log

Checklist Caddy

Bright-Belt

EZ3 MagTool Kit



MAINTENANCE SAFETY

Cormack Valve

LockOut Guard

Forklift Battery PPE Kit

Dissipator Cap

Watering Gun

Propane Gloves

Collision Avoidance

FORKLIFT SPOTTER™ SAFE ZONE

Approximately every three days someone in the US is killed in a forklift related accident.

Source: National Institute of Standards and Technology



Help prevent pedestrian collisions!

Collisions between man and machine can be catastrophic. Pedestrians in facilities with forklifts are in danger, especially when using hearing protection, distracted by mobile device use AND in poorly lit workplaces.

IRONguard™'s Forklift Spotter™ Safe Zone can prevent these potentially lethal accidents. This 360° Safe Zone provides a visual alert around the entire forklift, making it immediately clear to pedestrians, the safe distance to keep from the forklift.

Forklift accidents increase cost, damage reputations and most importantly put your employees at risk of injury or even death. The 360° "Glow" from IRONguard™'s Forklift Spotter™ Safe Zone will keep your employees safer, both on and off of the forklift.



The Forklift Front Spotter

creates a safer environment by emitting a bright, white light in front of the forklift. It is built strong for the rough work forklifts do. With high impact/vibration resistance and an LED lifespan rating of 50,000 hours, the LED Headlight outperforms traditional incandescent lights typically rated at only 5,000 hours.

Collision Avoidance

PRODUCT	Forklift Front Spotter	Forklift Side Spotter	Forklift Rear Spotter
Light	LED (50,000 hours)	LED (100,000 hours)	LED (50,000 hours)
Light Color	White	Red	Blue
Rated	1500 Lumens	1200 Lumens	830 Lumens
Housing	Aluminum	Aluminum	Aluminum
Lens Pattern	Beam	Spot	Spot
Lens Material	Polycarbonate	Polycarbonate	Polycarbonate
Compliances	UL & IP68	IP67	RoHS, CE & IP68 (Total dust & water resistant)
Voltage	10-80 VDC	9-64 VDC	10-80 VDC
Amperage	1.67 Amps	1.39 Amps	0.72 Amps
Width	5.00" / 127mm	7.85" / 199.5mm	5.61" / 142.6mm
Height	5.75" / 146mm	2.66" / 67.45mm	4.72" / 120mm
Depth	2.50" / 64mm	3.56" / 90.3mm	3.54" / 90mm
Weight	1.0 lb / 0.453 kg	1.57 lbs / 0.710kg	2.0 lb / 0.907kg
Packaged Width	4" / 102mm	22.05" / 560mm	5" / 127mm
Packaged Height	6" / 153mm	14.96" / 380mm	6" / 153mm
Packaged Depth	3" / 76mm	9.45" / 240mm	4" / 102mm
Cable Length	16" / 406mm	22" / 559mm	14" / 356mm
Mounting Style	Bracket/Bolt with 360° swivel or Universal Bracket Kit option	Adhesive/Ties	Bracket/Bolt with 360° swivel or Universal Bracket Kit option



Warning Safety Sign Kit available for purchase. Use with Forklift Rear Spotter.



The Forklift Side Spotters emit a red beam to the floor, on either side of the forklift. This red glow is a visual indicator of the safe distance pedestrians should keep between themselves and the forklift. By staying outside of this perimeter, pedestrians will avoid foot injury and collision from rear end swing.



The Forklift Rear Spotter projects a bright blue beam of light onto the floor behind the forklift alerting pedestrians of the oncoming vehicle well in advance. The Forklift Rear Spotter is especially useful at blind intersections and rack aisles. Because the light moves with the forklift, onlookers are easily warned of the vehicle moving in their direction.

Collision Avoidance

ERGO BACK-UP HANDLE

Reduce back strain with the Ergo Back-up Handle.

Operators who are required to travel frequently in reverse often grab the overhead guard. This is a dangerous practice and has resulted in serious injuries.

- Eases back stress when turning around
- Fits any lift truck
- Installs in minutes
- Keeps operator's hand inside the operator compartment
- Optional horn switch allows operator to keep left hand on steering wheel (hard wire to existing horn or battery operated for easy installation)



Standard model shown.
Battery model available.

MIRRORS

360 degree visibility.

Lift truck operators need to know what is going on all around the lift truck at all times. IRONguard™ mirrors give a high range of visibility allowing the operator to perform a quick safety check before travelling in reverse. Installation on any lift truck is quick and easy.

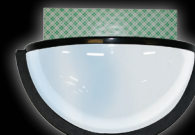
IRONguard™'s Dome Mirror offers 180° view and be installed in seconds with double-sided tape or a magnetic arm.

IRONguard™'s Wide Magnetic Mirror provides a wide angle view of the operator's surroundings for safety and is ideal for traveling in reverse. Can mount on the overhead guard in seconds using the magnetic arm attachment.

IRONguard™'s Side Magnetic Mirror provides a side-view of the operator's surroundings for safety and can mount anywhere in the operator's compartment in seconds using the magnetic arm attachment.



Magnetic Dome Mirror



Tape Dome Mirror



Wide Magnetic Mirror



Side Magnetic Mirror

SAFE-BUMP FORKLIFT PROTECTORS

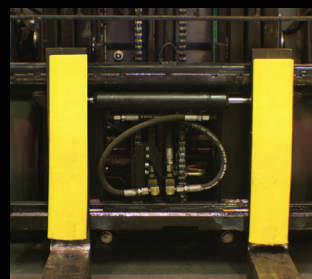
Reduce damage in many applications.

Specifically designed for forklifts, Safe-Bump attaches with two 100 lb magnets and (VHB) two way tape.

Size: 18" L x 4" W x 1.5" D

Magnets: two 100 lb magnets

Each bumper includes 2 magnets, two way tape and fork brackets.



Safe-Bump attaches to 4", 5" and 6" forks in seconds



Safe-Bump is only 1.5" thick and protects product from damage



Using two way tape, non-metal surfaces can be protected



Safe-Bump protects both the forklift and anything it hits



Safe-Bump can bend 90° to wrap around corners for maximum protection

Safe & Efficient Operation

ACCU-TILT FORK TILT LEVEL INDICATOR

Always know the tilt angle of the forks!

The Accu-Tilt shows the operator the level of the forks at all times thereby reducing potential damage by piercing product or racking and increasing productivity by eliminating the guess work.

- Reduce product damage
- Reduce rack damage
- Reduce pallet damage
- Increase productivity
- Decrease training time for new operators

Installs in 2 minutes without any tools on any counterbalance lift truck.



ACCU-HEIGHT FORK HEIGHT LEVEL INDICATOR

Always know the height of the forks!

The higher the lift, the harder it is to judge the correct height of the forks. Accu-Height is a simple sticker set that allows the operator to quickly know the right height of the forks at various rack levels.

By matching the indicator sticker with the color marker, the correct fork height is obtained to enter the pallet safely.

The second marker indicates the safe lift height of the pallet to be either removed from the rack or to be placed in to the rack.



Mast Indicator - Attaches to mast.



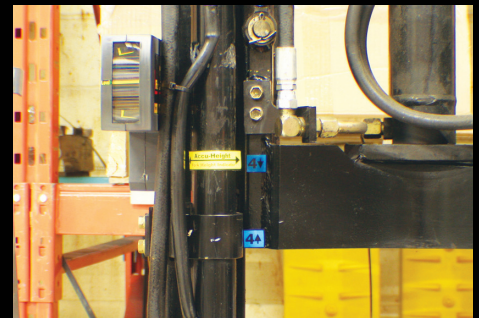
Mast Marker - Attaches to inside mast rail, pallet up position.

1	2	3
1	2	3
1	2	3
1	2	3
4	5	6
4	5	6
4	5	6
4	5	6

Sticker Set - installs on rack system tells the forklift operator the correct marker to use on the mast.



Correct Fork Height for Entry and Exit of Pallet



Correct pallet Height for Entry and Exit of Pallet

Safe & Efficient Operation

LIFT TRUCK LOG:

Complete Checklist System

The most complete Lift Truck recording system on the market.

Lift Truck Log Includes:

- Daily Check Lists - 624
- Repair Request Forms - 24
- Accident Report Forms - 4
- Near-miss Report Forms - 24
- Lock-out Tag (required if truck is unsafe to operate)
- PM Tracking History - 36 Events (know when to service each truck)



CHECKLIST CADDY

- One Caddy 4 1/2" x 7" polyethylene envelope with two-way tape for easy mounting
- One checklist pad with 75 inspection carbon copy sheets available for:
 - Electric sit-down (E),
 - Propane sit-down (CB),
 - Narrow aisle (N),
 - Pallet (P) truck or Aerial Work Platform (A)
 - Crane
 - Skid Steer
 - Electric Stacker
- One pen with attached plastic wire
- Replacement pads are available
- 624 Events per log.



KIT INCLUDES:

- LOG
- PLASTIC CASE
- PEN WITH PULL-STRAP

NOTE: Regulation states that a lift truck be inspected before the beginning of each shift and a record be kept on file. The Checklist Caddy is a complete system that ensures the operator completes this important task.

The Caddy is a highly visible case that mounts anywhere on the lift truck. A guaranteed way to ensure everyone does their safety inspections. Replacement books and forms available.

BRIGHT-BELT

The Bright-Belt is essential to keep operators safe.

At 60" in length and conforming to all safety specifications, the Bright-Belt gives increased operator maneuverability and its highly visible, bright orange webbing helps confirm people are safely buckled up. All installation hardware is included.



EZ3 MAGTOOL KIT

The most used tools are always at the ready.

The MagTool clipboard, tape gun and box all come with an integral, 100lb. magnet which allows them to be easily stuck and removed from a metal surface. That means the most common tools are always available. Less on/off machine time also increases safety and productivity. Offered in a 3-tool kit or as individual pieces, the EZ3 MagTool Kit is a real time-saver!



Maintenance Safety

CORMACK PROPANE SAFETY VALVE

Prevent dangerous surprises with the Cormack Propane Safety Valve.

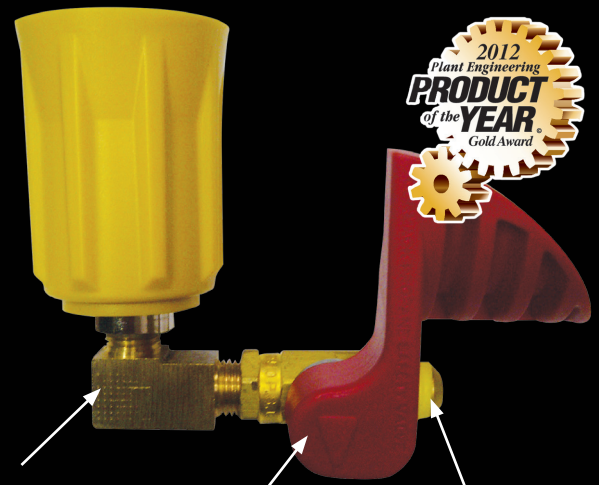
Changing an LPG (Liquid Propane Gas) cylinder can sometimes give a forklift operator a big surprise! The seal in the cylinder valve can fail causing liquid propane gas to spray over the hand or face faster than they can react. Liquid propane vaporizes quickly (-42°C or -44°F) and will cause extreme frostbite if it touches skin. Almost every forklift operator has had a negative experience with liquid propane, and they do not like getting hit with LP Gas!

Benefits

- Increases LPG cylinder exchange safety
- Speeds up LPG cylinder changes
- Fits almost all forklifts
- Installation takes just minutes

Design Features

1. In case of LPG release, the liquid propane is directed away from the hand
2. The Easy-Grip ergonomic design allows the operator to hand tighten and loosen the coupler with less effort
3. The plastic nylon material works as an insulator from cold LPG on the brass coupler.
4. All parts are UL rated for forklift LPG applications



Elbows come in 90° or 45° models

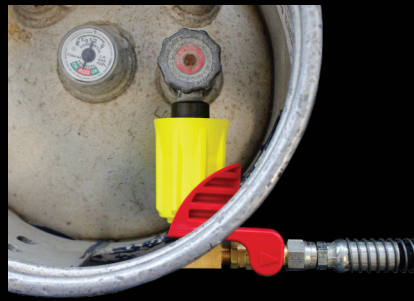
3/8" Flare fitting will fit most fork lifts. Installation takes only minutes.

The Cormack Valve locks out LPG in hose. The operator does not have to bleed the line when changing cylinders.

CLOSED FUEL (CLOSED VALVE)



OPEN FUEL (OPEN VALVE)



90 Degree Model



45 Degree Model



LOCKOUT GUARD

Prevent use of unsafe equipment with this lock-out/tag-out device.

The Equipment LockOut Guard is a lock-out and tag-out system that locks-out and tags-out your lift truck or other material handling equipment until repairs are made. This minimizes workplace injury by preventing the use of unsafe and malfunctioning equipment. The LockOut Guard has been designed for lock out of electric and propane forklift connections. Other energy supply connectors are also a possibility.

The LockOut Guard Kit comes complete with LockOut Guard box, (4) LockOut guard tags, (4) tie straps and lock with key. This equipment LockOut Guard is a simple solution to important employee safety.



Maintenance Safety

COMPLETE FORKLIFT BATTERY PROTECTIVE HANDLING PPE KIT

Protect your worker's health and safety and help prevent workplace hazards!

Occupational Health and Safety laws require that all personnel wear personal protective equipment (PPE) when performing all battery maintenance or replacement. IRONGuard™'s Complete Forklift Battery Handling PPE Kit comes with everything needed to stay compliant and safe. Forklift batteries contain sulphuric acid which is a hazardous material and the MSDS information requires personnel to wear particular PPE. All the necessary equipment is in one box and the complete kit mounts conveniently on any wall, ensuring it is within easy reach.

The Complete Forklift Battery Protective Handling PPE Kit includes:

- Neoprene safety handling gloves
- Safety goggles/eye protection
- Face safety shield/eye protection
- Apron
- Cap off removal tool
- Flashlight
- Battery hydrometer
- Battery Handling mounting board



PROPANE CYLINDER HANDLING GLOVES

Protect Hands from Liquid Propane Burn

To help safely change propane cylinders, IRONGuard™ offers two styles of gloves:

"Retracto" gloves are always ready to use and are securely attached to the lift truck with a retractable cable.

"On-Hand" gloves are attached to the overhead guard with a chain to ensure they are readily available.



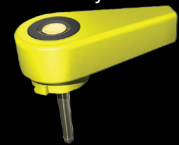
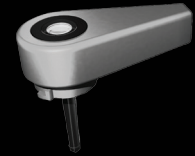
DISSIPATOR FORKLIFT BATTERY CAP

Make battery maintenance easy.

Using revolutionary technology, the Dissipator Battery cap maximizes your forklift battery's potential and reduces watering intervals by returning 80% of the evaporated water back into the battery. Its ergonomic design and durable housing that is resistant against battery acid makes the Dissipator an effective battery maintenance tool. Use the Dissipator cap on all industrial batteries such as a forklift battery, lift truck battery, Aerial Work Platform battery and golf cart battery.

Features

- Instant electrolyte level detection with the "magic eye"
- Durable acid-proof housing protects against acid overflow
- Ergonomic easy-off twist cap
- Battery emissions filter
- Returns 80% of evaporated water back to the battery
- Reduces the need for cell watering
- Reduces harmful gas emissions
- Ergonomic design for easy installation
- Prevents corrosion of the battery case



FORKLIFT BATTERY WATERING GUN

Safely maintain batteries.

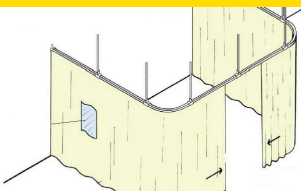
Keep your batteries properly filled and keep your battery tops dry by using our SFS watering gun. The forklift battery watering gun will help with the battery maintenance and care of your forklift battery. Our front trigger battery watering gun safely and easily adds water to your industrial batteries. The gun automatically shuts off at the correct fill level every time.

What is the major benefit of using a Battery Watering Gun? It keeps your employees safe. No longer will your employees have to bend awkwardly over the battery and look into each cell. Now they can insert the tip of the Gun and pull the trigger. This gives an accurate cell fill every time without back strain or the risk of an acid splash.

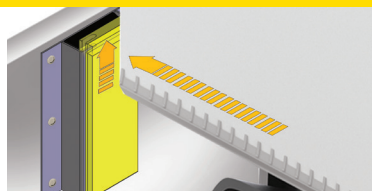
The main feature of this gun is the patented shutoff mechanism that prevents water from dripping all over the top of your battery when moving the gun from cell to cell. Water can attract dirt and make the battery a safety hazard in a short period of time.



MORE SAFETY SOLUTIONS:



Environmental Control



Loading Dock Bumpers



Wheel Chock Safety Systems



Protection Systems



Toll-Free Phone: 1-866-828-6737
Toll-Free Fax: 1-844-899-0088
ironguardsafety.com info@ironguardsafety.com

Many IRONGuard™ Safety Products are trademarked and covered by U.S. or international patents. Products may change without prior notice.

Form [ForkliftSafety EN-HI-IG-L-201609]