

ProLine[®] Offerings

ProLine offers readily available contractor grade solutions comprising of our best-selling products from our most recognized brands

Albeo[®]
Industrial

Lumination[®]
Indoor

Evolve[®]
Outdoor



ALV Series
Low Bay



EE Series
Emergency Exit
Coming Soon



LPL Series
Flat Panel



RPL Series
Retrofit Troffer



EACL Series
Area & Site



ABC Series
High Bay



LRX Series
Gimbal & Disk Downlight



LTC Series
Track Light



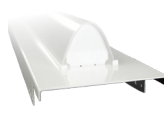
RS Can
Lamp



E2SC Series
Security Light



LIB Series
Linear In-Bay



RLB2 Series
Refit Linear Strip



WS Series
Wrap Mount



Every contractor deserves a
Fast, Reliable, & Trusted lighting partner

[Learn More](#)

Why ProLine®



Readily Available

Tight project deadlines can now be met with our line of products specifically geared towards servicing contractor needs and exceeding requirements defined by builders and architects.



Contractor Grade Products

We selected products that met the fast-paced needs of our contractors without compromising on Current's quality and safety standards.



Trusted Performance

Founded on a reputation of quality and excellence that dates back to Edison's first electric lightbulb, Current builds upon an unsurpassed expertise and trusted performance.



Contractor Grade Products



- Field switchable lumens and CCT
- Extra large electrical boxes
- Multiple knockouts for maximum install flexibility
- Innovative drivers, designed to last longer

- EZ springs - for a simple and quick installation
- Goof rings - offers a seamless look for any install
- 360° Rotation and 35° tilt for maximum flexibility
- Switchable lumens



- Quick connect install
- Smooth design
- Connect up to 26 fixtures with one connector

GE current
a Daintree company

www.gecurrent.com

© 2021 Current Lighting Solutions, LLC. All rights reserved. GE and the GE monogram are trademarks of the General Electric Company and are used under license. Information provided is subject to change without notice. All values are design or typical values when measured under laboratory conditions.

IND600 (Rev 02/05/2020)