

®

**SPEEDAIRE**



## Impact Wrench

Models 48LZ91, 48MA08



**PLEASE READ AND SAVE THESE INSTRUCTIONS. READ CAREFULLY BEFORE ATTEMPTING TO ASSEMBLE, INSTALL, OPERATE OR MAINTAIN THE PRODUCT DESCRIBED.**

**PROTECT YOURSELF AND OTHERS BY OBSERVING ALL SAFETY INFORMATION. FAILURE TO COMPLY WITH INSTRUCTIONS COULD RESULT IN PERSONAL INJURY AND/OR PROPERTY DAMAGE! RETAIN INSTRUCTIONS FOR FUTURE REFERENCE.**

**PLEASE REFER TO BACK COVER FOR INFORMATION REGARDING DAYTON'S WARRANTY AND OTHER IMPORTANT INFORMATION.**

**Model #:** \_\_\_\_\_

**Serial #:** \_\_\_\_\_

**Purch. Date:** \_\_\_\_\_

*Form 5S0001/ Printed in 04/16  
STC100/ Version 00 04/ 2016  
© 2013 Dayton Electric Manufacturing Co.  
All Rights Reserved*



## BEFORE YOU BEGIN

### **Personal protection equipment**



- Carefully read this manual before using the tool.
- All persons in the work area must always wear safety glasses with side guards in order to prevent eye injuries.
- Hearing protection must also be worn to prevent a possible hearing loss.



## UNPACKING

### **Unpack:**

- After unpacking unit, inspect carefully for any damage that may have occurred during transit. Check for loose, missing, or damaged parts. Shipping damage claim must be filed with carrier.

### **Contents:**



- 48MA08 Impact Sockets 10pcs  
In-line Oiler 2oz.  
Oil Bath Clutch 1
- Operating Instructions and Parts Manual (3)



- See General Safety Instructions on page 2, and Cautions and Warnings as shown.

**GENERAL SAFETY INFORMATION**

This manual contains information that is very important to know and understand. This information is provided for SAFETY and to PREVENT EQUIPMENT PROBLEMS. To help recognize this information, observe the following symbols.

**⚠ CAUTION**

*Caution indicates a potentially hazardous situation which, if not avoided, will result in death or serious injury.*

**⚠ WARNING**

*Warning indicates a potentially hazardous situation which, if not avoided, could result in death or serious injury.*

**⚠ DANGER**

*Danger indicates an imminently hazardous situation which, if not avoided, will result in death or serious injury.*

**NOTE:** Notice indicates important information that, if not followed, may cause damage to equipment.

**⚠ DANGER**

*Entanglement Hazards, Keep away from rotating drive.*

**⚠ CAUTION**

*Do not wear jewelry or loose clothing. Choking can occur if neckwear is not kept away from and accessories. Scalping can occur if hair is not kept away from the tool and accessories. Avoid direct contact with accessories during use. Use only proper accessories designed for use with pneumatic screwdrivers, nut runners, ratchets and pulse tools.*

**⚠ DANGER**

*Projectile Hazards, Always wear impact-resistant eye and face protection when involved with or near the operation, repair or maintenance of the tool or changing accessories on the tool. Be sure all others in the area are wearing impact-resistant eye and face protection.*

**⚠ DANGER**

*Even small projectiles can injure eyes and cause blindness. Be sure to use a barrier (such as under a heavy work table) to stop any possible broken parts.*

**⚠ DANGER**

*Workplace Hazards. Slipping/Tripping/Falling is a major cause of serious injury or death. Beware of excess hose left on the walking or work surface. High sound levels can cause permanent hearing loss. Maintain a balanced body position and secure footing. Repetitive work motions, awkward positions and exposure to vibration can be harmful to hands and arms. Operators and maintenance personnel must be physically able to handle the bulk, weight and power of this tool.*

**SPECIFICATIONS**

Grainger Items No.	Speed (RPM)	Maximum Torque	Air Inlet NPT (in.)	Bolt capacity (in.)	Required Pressure (psi)	Weight (lb)
48LZ91	7000	60-200	1/4	1/2	90	4.8
48MA08	7000	60-200	1/4	1/2	90	4.8

**Dimensions (inch)**

Grainger Items No.	Length (In./mm)	Width (In./mm)	Height (In./mm)
48ZL91	7"	7.4"	2.3"
48MA08	7"	7.4"	2.3"

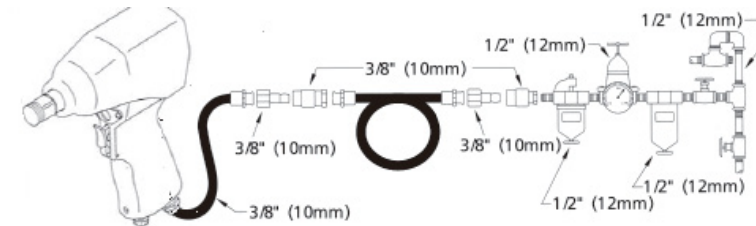


Figure 1 - Air Input Diagrams



## INSTALLATION INSTRUCTIONS

1. Designed to operate on 90 PSI, lower pressure (below 90 PSI) will reduce performance of the tool while higher air pressure (over 90 PSI) raises the performance of the tool beyond its rated capacity and could cause serious damage to tool and user.
2. Always use clean dry air. Excessive moisture and dirt will greatly reduce the life of any air motor. We recommend the installation of an inline filterregulator- lubricator as close to the tool as possible.
3. Always use clean dry air. Excessive moisture and dirt will greatly reduce the life of any air motor. We recommend the installation of an inline filterregulator- lubricator as close to the tool as possible.



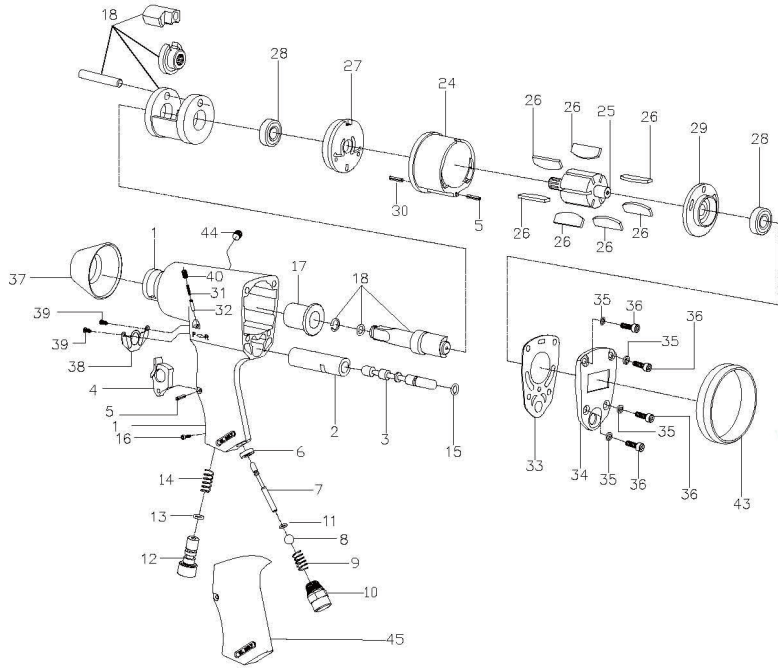
## TROUBLESHOOTING

Symptoms	Possible Causes	Corrective Actions
Tool runs slowly or will not operate	1. Grit or gum in tool	1. Flush tool with quality air tool oil, gum solvent, or an equal mixture of SAE 10 motor oil and kerosene. If quality oil is not used, lubricate tool after cleaning.
	2. Low air pressure	2. Adjust compressor regulator to tool maximum while tool is running free.
	3. Air hose leaks	3. Tighten and seal hose fittings if leaks are found.
	4. Pressure drops	4a. Be sure the hose is properly sized. Long hoses or tools using large volumes of air may require a hose with an I.D. of 1/2" or larger depending on total hose length. 4b. Do not use multiple number of hoses connected with quick connect fittings. This Causes additional pressure drop and reduces tool power. Connect hoses directly together.
Moisture blowing out of tool	1. Water in tank	1. Drain tank. Oil tool and run until no water is evident. Oil tool again and run 1-2 seconds.
	2. Water in the air lines/hoses	2a. Install a water separator/filter. NOTE: Separators only work properly when the air passing through the separators is cool. Locate the separator/filter as far as possible from the compressor. 2b. Install an air dryer.

## MAINTENANCE

### Lubrication

Use an air line lubricator, two drops per minute. If an air line lubricator cannot be used, add air motor oil to the inlet once a day.

**REPAIR PARTS ILLUSTRATION FOR 48LZ91****REPAIR PARTS ILLUSTRATION FOR 48LZ91**

Parts Description	Part No.	Qty.
1 Plug		1
1-1 Housing		1
2 Valve Sleeve		1
3 Reverse Valve	48LZ9112001G	1
4 Trigger		1
5 Pin (3x14)	48LZ9112002G	2
6 Bushing	48LZ9112003G	1
7 Valve Stem	48LZ9112004G	1
8 Steel Ball (ø9.5)		1
9 Spring	48LZ9112005G	1
10 Hose Adaptor	48LZ9112006G	1
11 O-Ring (2x1.5)		1
12 Air Regulator	48LZ9112007G	1
13 O-Ring (P8)		1
14 Spring	48LZ9112008G	1
15 O-Ring		1
16 Screw		1
17 Anvil Bushing	48LZ9112009G	1
18 Hammer Mechanism Assembly		1
19 Cylinder		1
20 Rotor		1
21 Rotor Blade		7
22 Front End Plate		1
23 Ball Bearing		2
24 Rear End Plate		1
25 Pin (3x10)	48LZ9112010G	1
26 Spring	48LZ9112011G	1
27 Pin		1
28 Rear Gasket		1
29 Rear Cover		1
30 Washer		1
31 Screw		4
32 Protecting Rubber	48LZ9112012G	1
33 Exhaust Deflector		1
34 Screw (M3x8)		2
40 Screw (M5x8)		1
43 Rubber		1
44 Screw (M8x6)		1
45 Grip	48LZ9112013G	1
46 Accessory – Sockets	48LZ9112014G	10

**For Repair Parts, call 1-800-323-0620**  
**24 hours a day – 365 days a year**

Please provide following information:

- Model number
- Serial number (if any)
- Part description and number as shown in parts list

## **SPEEDAIRE ONE-YEAR LIMITED WARRANTY**

**SPEEDAIRE ONE-YEAR LIMITED WARRANTY.** All Speedaire® product models covered in this manual are warranted by Dayton Electric Mfg. Co. ("Dayton") to the original user against defects in workmanship or materials under normal use for one year after date of purchase. If the Speedaire Product is part of a set, only the portion that is defective is subject to this warranty. Any product or part which is determined to be defective in material or workmanship and returned to an authorized service location, as Dayton or Dayton's designee designates, shipping costs prepaid, will be, as the exclusive remedy, repaired or replaced with a new or reconditioned product or part of equal utility or a full refund given, at Dayton's or Dayton's designee's option, at no charge. For limited warranty claim procedures, see "Warranty Service" below. This warranty is void if there is evidence of misuse, mis-repair, mis-installation, abuse or alteration. This warranty does not cover normal wear and tear of Speedaire Products or portions of them, or products or portions of them which are consumable in normal use. This limited warranty gives purchasers specific legal rights, and you may also have other rights which vary from jurisdiction to jurisdiction.

### **WARRANTY DISCLAIMERS AND LIMITATIONS OF LIABILITY RELATING TO ALL CUSTOMERS FOR ALL PRODUCTS**

**LIMITATION OF LIABILITY.** TO THE EXTENT ALLOWABLE UNDER APPLICABLE LAW, DAYTON'S LIABILITY FOR CONSEQUENTIAL AND INCIDENTAL DAMAGES IS EXPRESSLY DISCLAIMED. DAYTON'S LIABILITY IN ALL EVENTS IS LIMITED TO AND SHALL NOT EXCEED THE PURCHASE PRICE PAID.

**WARRANTY DISCLAIMER.** A DILIGENT EFFORT HAS BEEN MADE TO PROVIDE PRODUCT INFORMATION AND ILLUSTRATE THE SPEEDAIRE PRODUCTS IN THIS LITERATURE ACCURATELY; HOWEVER, SUCH INFORMATION AND ILLUSTRATIONS ARE FOR THE SOLE PURPOSE OF IDENTIFICATION, AND DO NOT EXPRESS OR IMPLY A WARRANTY THAT THE SPEEDAIRE PRODUCTS ARE MERCHANTABLE, OR FIT FOR A PARTICULAR PURPOSE, OR THAT THE SPEEDAIRE PRODUCTS WILL NECESSARILY CONFORM TO THE ILLUSTRATIONS OR DESCRIPTIONS. EXCEPT AS PROVIDED BELOW, NO WARRANTY OR AFFIRMATION OF FACT, EXPRESSED OR IMPLIED, OTHER THAN AS STATED IN THE "LIMITED WARRANTY" ABOVE IS MADE OR AUTHORIZED BY DAYTON.

**PRODUCT SUITABILITY.** MANY JURISDICTIONS HAVE CODES AND REGULATIONS GOVERNING SALES, CONSTRUCTION, INSTALLATION, AND/OR USE OF PRODUCTS FOR CERTAIN PURPOSES, WHICH MAY VARY FROM THOSE IN NEIGHBORING AREAS. WHILE ATTEMPTS ARE MADE TO ASSURE THAT SPEEDAIRE PRODUCTS COMPLY WITH SUCH CODES, DAYTON CANNOT GUARANTEE COMPLIANCE, AND CANNOT BE RESPONSIBLE FOR HOW THE PRODUCT IS INSTALLED OR USED. BEFORE PURCHASE AND USE OF A PRODUCT, REVIEW THE SAFETY/SPECIFICATIONS, AND ALL APPLICABLE NATIONAL AND LOCAL CODES AND REGULATIONS, AND BE SURE THAT THE SPEEDAIRE PRODUCT, INSTALLATION, AND USE WILL COMPLY WITH THEM.

**CONSUMERS ONLY.** CERTAIN ASPECTS OF DISCLAIMERS ARE NOT APPLICABLE TO CONSUMER PRODUCTS SOLD TO CONSUMERS; (A) SOME JURISDICTIONS DO NOT ALLOW THE EXCLUSION OR LIMITATION OF INCIDENTAL OR CONSEQUENTIAL DAMAGES, SO THE ABOVE LIMITATION OR EXCLUSION MAY NOT APPLY TO YOU; (B) ALSO, SOME JURISDICTIONS DO NOT ALLOW A LIMITATION ON HOW LONG AN IMPLIED WARRANTY LASTS, SO THE ABOVE LIMITATION MAY NOT APPLY TO YOU; AND (C) BY LAW, DURING THE PERIOD OF THIS LIMITED WARRANTY, ANY IMPLIED WARRANTIES OF MERCHANTABILITY OR FITNESS FOR A PARTICULAR PURPOSE APPLICABLE TO CONSUMER PRODUCTS PURCHASED BY CONSUMERS, MAY NOT BE EXCLUDED OR OTHERWISE DISCLAIMED.

THIS LIMITED WARRANTY ONLY APPLIES TO SPEEDAIRE PRODUCTS PURCHASED BY UNITED STATES PURCHASERS FOR DELIVERY IN THE UNITED STATES.

### **WARRANTY SERVICE**

To obtain warranty service if you purchased the covered product directly from W.W. Grainger, Inc. ("Grainger"), (i) write or call or visit the local Grainger branch from which the product was purchased or another Grainger branch near you (see [www.grainger.com](http://www.grainger.com) for a listing of Grainger branches); or (ii) contact Grainger by going to [www.grainger.com](http://www.grainger.com) and clicking on the "Contact Us" link at the top of the page, then clicking on the "Email us" link; or (iii) call Customer Care (toll free) at 1-888-361-8649. To obtain warranty service if you purchased the covered product from another distributor or retailer, (i) go to [www.grainger.com](http://www.grainger.com) for Warranty Service; (ii) write or call or visit a Grainger branch near you; or (iii) call Customer Care (toll free) at 1-888-361-8649. In any case, you will need to provide, to the extent available, the purchase date, the original invoice number, the stock number, a description of the defect and anything else specified in this Speedaire One-Year Limited Warranty. You may be required to send the product in for inspection at your cost. You can follow up on the progress of inspections and corrections in the same ways. Title and risk of loss pass to buyer on delivery to common carrier, so if product was damaged in transit to you, file claim with carrier, not the retailer, Grainger or Dayton. For warranty information for purchasers and/or delivery outside the United States, please contact:

**Dayton Electric Mfg. Co.,  
100 Grainger Parkway, Lake Forest, IL 60045 U.S.A.  
or call +1-888-361-8649**