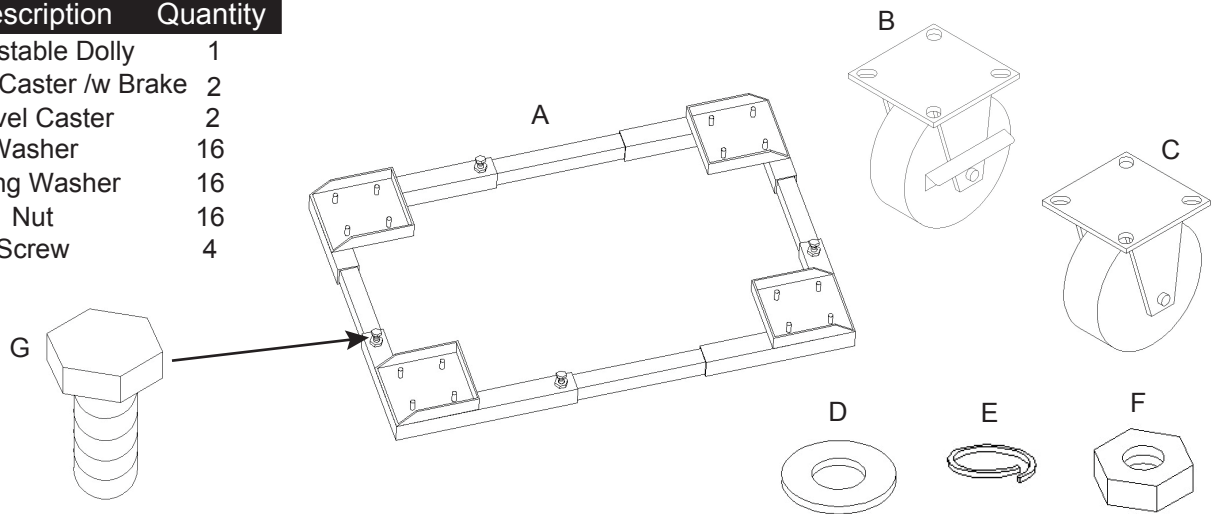


Assembly Instruction

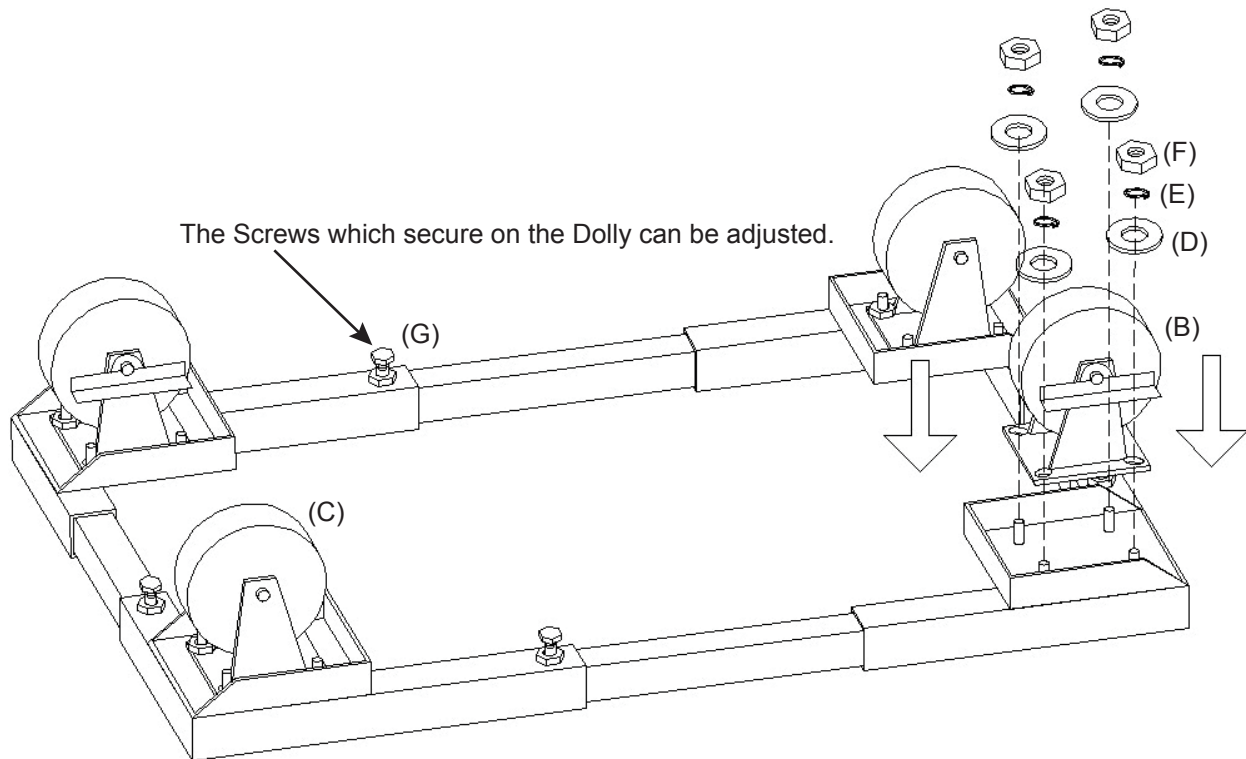
Part List

48J131 & 48J132

P/NO.	Description	Quantity
A	Adjustable Dolly	1
B	Swivel Caster /w Brake	2
C	Swivel Caster	2
D	Washer	16
E	Spring Washer	16
F	Nut	16
G	Screw	4



Step 1. Place the Swivel Caster /w Brake (B) & Swivel Caster (C) on the back of Adjustable Dolly (A), and secure it with Washers (D) & Spring Washers (E) and Nuts (F).



Step 2. To loose all the screws and adjust the lenght & width which you want.

Step 3. Then secure the screws tight. Ready to use.

Note: There are two swivel casters with brake and two with no brake, and customers can assemble at random where they want to install. (Suggest: Install by cross.)