

484H30A

REV.
-

SPLIT-PHASE & CAPACITOR START MOTOR PERFORMANCE

HP:	1/3	TR 28837,38121						
Poles:	4							
Ambient (°C)	40							
Altitude (FASL):								
No. of Speeds:	Note - if two-speed, complete lower portion of form for low speed.							
Volts:	115	115	208	230	277	460	100	200
HZ:	60	60	60	60	60	60	50	50
Service Factor:	1							
Efficiency:	@ Rated Load	51.9	-	-	-	-	-	-
Power Factor:	@ Rated Load	67.1	-	-	-	-	-	-
Amps:	@ No Load	5.428	-	-	-	-	-	-
	@ Rated Load	6.206	-	-	-	-	-	-
	@ Service Factor	-	-	-	-	-	-	-
	@ Locked Rotor	40.16	-	-	-	-	-	-
RPM:	@ Rated Load	1717	-	-	-	-	-	-
Torques: Oz.Ft. / Lb.In. <small>(Circle One)</small>	Breakdown	31.9	-	-	-	-	-	-
	Locked Rotor	22.09	-	-	-	-	-	-
	Pull-Up	19.35	-	-	-	-	-	-
	Rated Load	16.31	-	-	-	-	-	-
	Service Factor	-	-	-	-	-	-	-
Watts:	@ Rated Load	479.1	-	-	-	-	-	-
KVA Code:								
Temperature Rise:	@ Rated Load	77.6	-	-	-	-	-	-
	@ Service Factor	-	-	-	-	-	-	-
Thermal Protector:	Trip Temp (°C)	132.6	-	-	-	-	-	-
Winding Material:	Start (Auxiliary)							
	Run (Main)							
Capacitor(s):	Start (MFD / Volts)					N/A		
	No. of Start Capacitors					N/A		
	Run (MFD / Volts)					N/A		
	No. of Run Capacitors					N/A		

LOW SPEED PERFORMANCE DATA:

HP:								
Poles:								
Volts:		120	208	230	277	460	100	200
HZ:		60	60	60	60	60	50	50
Efficiency:	@ Rated Load	-	-	-	-	-	-	-
Power Factor:	@ Rated Load	-	-	-	-	-	-	-
Amps:	@ No Load	-	-	-	-	-	-	-
	@ Rated Load	-	-	-	-	-	-	-
	@ Service Factor	-	-	-	-	-	-	-
	@ Locked Rotor	-	-	-	-	-	-	-
Torques: Oz.Ft. / Lb.In. <small>(Circle One)</small>	Breakdown	-	-	-	-	-	-	-
	Locked Rotor	-	-	-	-	-	-	-
	Pull-Up	-	-	-	-	-	-	-
	Rated Load	-	-	-	-	-	-	-
	Service Factor	-	-	-	-	-	-	-
Watts:	@ Rated Load	-	-	-	-	-	-	-
Temperature Rise:	@ Rated Load	-	-	-	-	-	-	-
	@ Service Factor	-	-	-	-	-	-	-

DRAWING NO. PAGE 1 REV.
484H30A -

Performance Data



484H30A REV.
-

Dayton Manufacturing Company

Motor Description

Model: S055RSY8548 484H30
 Motor ID: 1 of 3
 Poles: 4
 Volts: 115
 Frequency: 60
 HP: 1/3
 Speed: 1750
 Phase: 1
 Protector: CEJ51EY

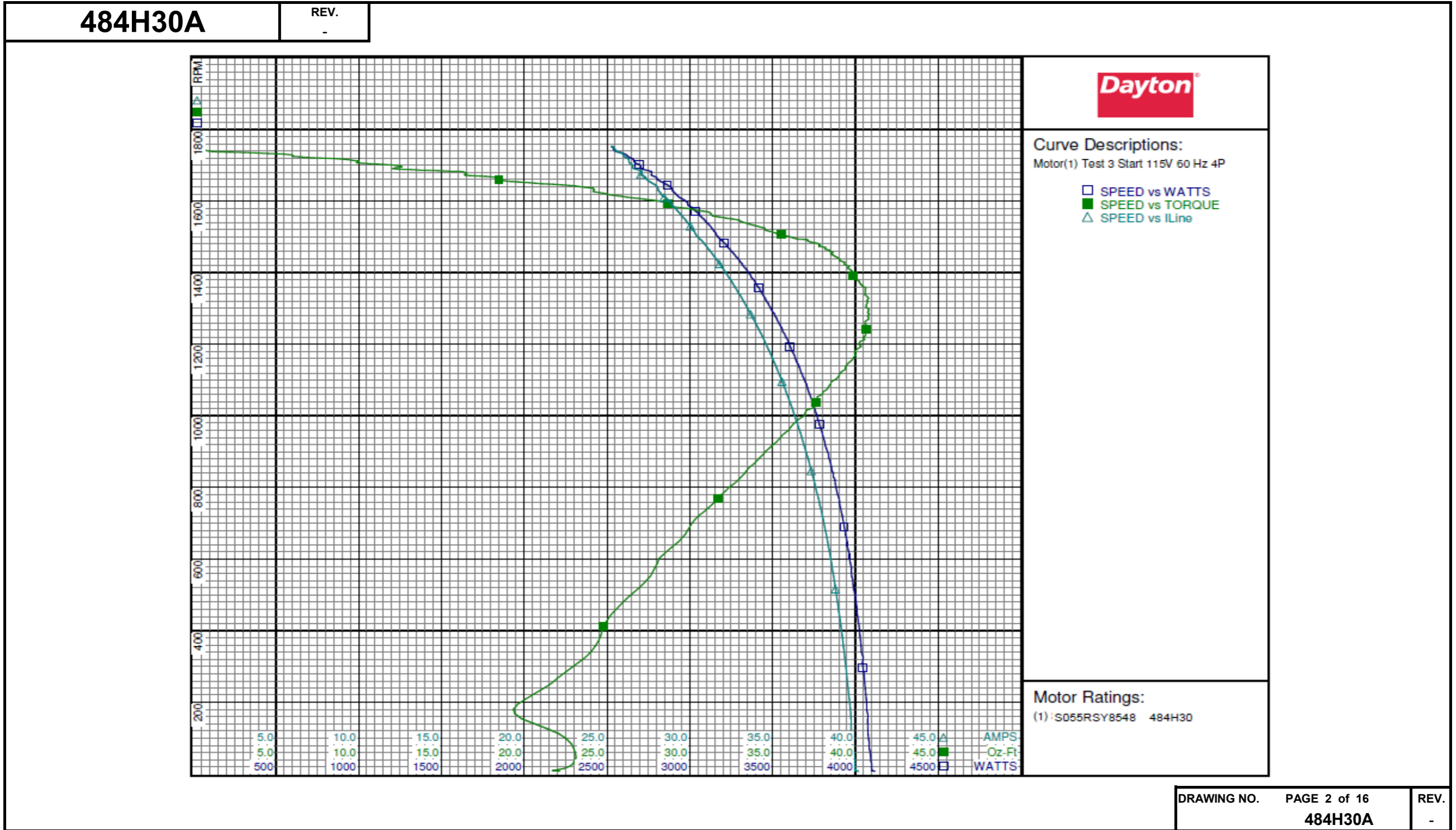
Test Conditions

Test Type: Start Run Cap: 0
 Test Number: 3 Start Cap: 0µfd
 Poles: 4 Environment:
 Volts: 115 Tested: 3/31/2010 9:53:24 AM
 Hz: 60 Tested By: Sharp, Gerald
 Rotation: Gear Ratio: 1:1
 Special Cond: Bearing Friction: -0.77 Oz-Ft
 Speed Conn: Windage Torque: -2.26 Oz-Ft
 TestBoard: Amps Performance Fixture #4

Special Points	Vline (V)	Iline (A)	Imain (A)	Iaux (A)	Watts	RPM	Tq (Oz-ft)	HP	Eff (%)	PF (%)
	115.0	40.16	18.623	22.25	4114	7	22.09	0.002	0.0	89.1
	115.0	39.97	18.639	22.03	4097	27	22.91	0.007	0.1	89.1
	115.0	39.72	18.666	21.68	4073	154	19.86	0.036	0.7	89.2
PUT OZ-FT	115.0	39.69	18.699	21.59	4067	181	19.35	0.042	0.8	89.1
	115.0	39.43	18.655	21.27	4045	296	22.84	0.081	1.5	89.2
	115.0	39.03	18.563	20.86	4012	440	25.17	0.132	2.5	89.4
	115.0	38.62	18.429	20.48	3975	564	27.76	0.187	3.5	89.5
	115.0	38.19	18.269	20.12	3937	678	29.83	0.241	4.6	89.6
	115.0	37.70	18.084	19.74	3891	780	31.91	0.296	5.7	89.8
	115.0	37.17	17.860	19.36	3845	875	34.05	0.355	6.9	89.9
	115.0	36.62	17.611	19.00	3793	960	35.95	0.411	8.1	90.1
	115.0	36.04	17.341	18.66	3740	1038	37.63	0.465	9.3	90.2
	115.0	35.45	17.042	18.34	3682	1109	38.97	0.515	10.4	90.3
	115.0	34.85	16.723	18.05	3624	1175	39.94	0.559	11.5	90.4
	115.0	34.22	16.375	17.79	3560	1235	40.65	0.598	12.5	90.4
	115.0	33.60	16.003	17.57	3501	1289	40.72	0.625	13.3	90.6
	115.0	33.01	15.625	17.41	3440	1338	40.57	0.646	14.0	90.6
	115.0	32.39	15.222	17.28	3376	1384	39.97	0.658	14.6	90.6
	115.0	31.79	14.845	17.15	3314	1425	39.31	0.667	15.0	90.6
	115.0	31.18	14.445	17.05	3246	1462	38.43	0.669	15.4	90.5
	115.0	30.52	13.977	16.99	3174	1497	36.21	0.645	15.2	90.4
	115.0	30.07	13.553	17.10	3129	1526	34.29	0.623	14.9	90.5
	115.0	29.57	13.104	17.19	3069	1555	31.76	0.588	14.3	90.3
	115.0	29.10	12.712	17.24	3011	1581	29.29	0.551	13.7	90.0
	115.0	28.59	12.284	17.30	2950	1607	26.95	0.515	13.0	89.7
	115.0	28.12	11.822	17.44	2897	1628	24.15	0.468	12.1	89.6
	115.0	27.72	11.438	17.52	2845	1649	20.62	0.405	10.6	89.2
	115.0	27.25	10.943	17.70	2785	1668	17.68	0.351	9.4	88.9
	115.0	26.82	10.358	17.96	2723	1687	13.17	0.265	7.2	88.3
	115.0	26.37	9.893	18.09	2671	1706	10.01	0.203	5.7	88.1
	115.0	26.08	9.645	18.18	2630	1723	6.42	0.132	3.7	87.7
	115.0	25.60	8.790	18.57	2555	1738	1.15	0.024	0.7	86.8
	115.0	25.32	8.641	18.55	2527	1753	0.00	0.000	0.0	86.8

DRAWING NO. PAGE 1 of 16 REV.
484H30A -

Performance Data



DRAWING NO. PAGE 2 of 16	REV.
484H30A	-

Dayton Electric Mfg. Co. Lake Forest, IL 60045 USA

Performance Data



484H30A REV.
-

Dayton Manufacturing Company

Motor Description

Model: S055RSY8548 484H30
 Motor ID: 1 of 3
 Poles: 4
 Volts: 115
 Frequency: 60
 HP: 1/3
 Speed: 1750
 Phase: 1
 Protector: CEJ51EY

Test Conditions

Test Type: Run Run Cap: 0
 Test Number: 4 Start Cap: 0µfd
 Poles: 4 Environment:
 Volts: 115 Tested: 3/31/2010 9:52:28 AM
 Hz: 60 Tested By: Sharp, Gerald
 Rotation:
 Special Cond: Gear Ratio: 1:1
 Speed Conn: Bearing Friction: -0.49 Oz-Ft
 TestBoard: Windage Torque: -2.13 Oz-Ft
 Amps Performance Fixture #4

Special Points	Vline (V)	Iline (A)	Watts	RPM	Tq (Oz-ft)	HP	Eff (%)	PF (%)
	115.0	5.376	188.2	1774	0.00	0.000	0.0	30.4
	115.0	5.347	283.6	1761	6.28	0.132	34.6	46.1
	115.0	5.567	338.9	1750	9.23	0.192	42.3	52.9
1750 RPM	115.0	5.567	339.2	1750	9.24	0.192	42.3	53.0
	115.0	5.956	408.3	1732	12.55	0.259	47.3	59.6
16 OZ-FT	115.0	6.179	472.5	1718	16.00	0.327	51.7	66.5
0.333 HP	115.0	6.206	479.1	1717	16.31	0.333	51.9	67.1
	115.0	6.290	495.4	1714	17.04	0.348	52.4	68.5
	115.0	6.923	584.1	1695	20.76	0.419	53.5	73.4
	115.0	7.537	673.6	1671	24.02	0.478	52.9	77.7
	115.0	8.286	762.4	1645	26.82	0.525	51.4	80.0
	115.0	9.090	852.3	1617	28.94	0.557	48.8	81.5
	115.0	9.913	940.9	1585	30.51	0.576	45.7	82.5
	115.0	10.735	1023.9	1551	31.38	0.579	42.2	82.9
	115.0	11.521	1100.7	1514	31.87	0.574	38.9	83.1
BDT OZ-FT	115.0	11.610	1108.2	1509	31.90	0.573	38.6	83.0
	115.0	12.290	1171.7	1474	31.70	0.556	35.4	82.9
	115.0	12.999	1233.4	1431	31.09	0.530	32.0	82.5
	115.0	13.644	1289.5	1387	30.08	0.497	28.7	82.2
	115.0	14.256	1339.4	1339	28.81	0.459	25.6	81.7
	115.0	14.819	1383.3	1288	27.23	0.417	22.5	81.2
	115.0	15.340	1422.4	1234	25.46	0.374	19.6	80.6
	115.0	15.815	1455.3	1177	23.68	0.332	17.0	80.0
	115.0	16.245	1485.7	1118	21.71	0.289	14.5	79.5
	115.0	16.629	1509.8	1054	19.59	0.246	12.1	78.9
	115.0	16.982	1531.5	987	17.52	0.206	10.0	78.4
	115.0	17.295	1549.7	915	15.31	0.167	8.0	77.9
	115.0	17.579	1565.5	838	13.11	0.131	6.2	77.4
	115.0	17.828	1580.0	757	11.06	0.100	4.7	77.1
	115.0	18.046	1591.3	670	8.93	0.071	3.3	76.7
	115.0	18.233	1601.2	579	6.83	0.047	2.2	76.4
	115.0	18.406	1609.8	481	4.41	0.025	1.2	76.0
	115.0	18.540	1617.3	377	1.95	0.009	0.4	75.9
	115.0	18.607	1616.1	270	0.86	0.003	0.1	75.5
	115.0	18.635	1618.0	155	-0.18	0.000	0.0	75.5

DRAWING NO. PAGE 3 of 16 REV.
 484H30A -

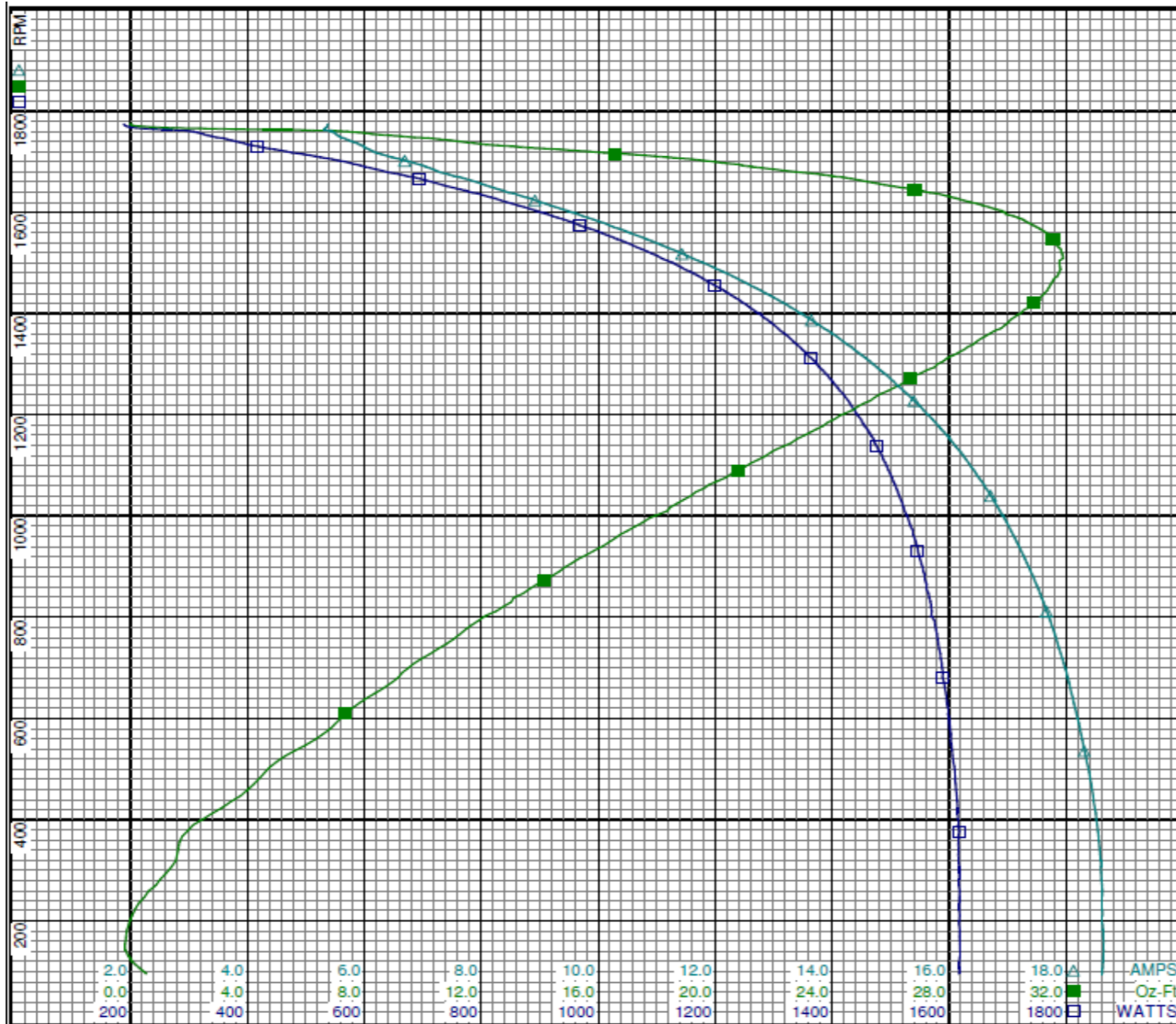
Performance Data



484H30A

REV.

-



Curve Descriptions:
 Motor(1) Test 4 Run 115V 60 Hz 4P
 □ SPEED vs WATTS
 ■ SPEED vs TORQUE
 △ SPEED vs ILine

Motor Ratings:
 (1) S055RSY8548 484H30

DRAWING NO.	PAGE 4 of 16	REV.
484H30A		-

Dayton Electric Mfg. Co. Lake Forest, IL 60045 USA

Performance Data



484H30A REV.
-

Dayton Manufacturing Company

Motor Description

Model: S055PNB8564015E 484H28
 Motor ID: 1 of 1
 Poles: 4
 Volts: 100-120/200-240
 Frequency: 50&60
 HP: 1/4
 Speed: 1425&1725
 Phase: 1
 Protector: MEG58AFH

Test Conditions

Test Type: Start Run Cap: 0
 Test Number: 15 Start Cap: 0µfd
 Poles: 4 Environment: 19.9 Deg C 17 % RH 1006 hPa
 Volts: 240 Tested: 1/15/2018 9:10:10 AM
 Hz: 60 Tested By: Sharp, Gerald
 Rotation: Gear Ratio: 1:1
 Special Cond: Bearing Friction: -1.01 Oz-Ft
 Speed Conn: Windage Torque: -2.67 Oz-Ft
 TestBoard: Aamps Performance Fixture #3

Special Points	Vline (V)	Iline (A)	Imain (A)	Iaux (A)	Watts	RPM	Tq (Oz-ft)	HP	Eff (%)	PF (%)
	240.0	15.332	3.950	15.345	3012	3	25.44	0.001	0.0	81.9
	240.0	15.305	3.924	15.306	3009	19	25.40	0.006	0.1	81.9
	240.0	15.261	3.780	15.172	3003	128	25.02	0.038	0.9	82.0
PUT OZ-FT	240.0	15.253	3.730	15.116	3001	157	24.56	0.046	1.1	82.0
	240.0	15.228	3.526	14.964	3002	258	25.68	0.079	2.0	82.1
	240.0	15.159	3.269	14.764	2993	381	27.53	0.125	3.1	82.3
	240.0	15.073	3.013	14.576	2983	495	29.16	0.172	4.3	82.5
	240.0	14.966	2.768	14.372	2970	600	30.68	0.219	5.5	82.7
	240.0	14.850	2.494	14.155	2954	695	32.05	0.265	6.7	82.9
	240.0	14.721	2.195	13.958	2939	784	33.68	0.314	8.0	83.2
	240.0	14.587	1.901	13.768	2922	865	35.13	0.362	9.2	83.5
	240.0	14.427	1.608	13.576	2898	942	35.87	0.402	10.4	83.7
	240.0	14.259	1.323	13.400	2872	1015	36.82	0.445	11.6	83.9
	240.0	14.079	1.065	13.234	2842	1081	37.64	0.484	12.7	84.1
	240.0	13.888	0.861	13.087	2812	1143	37.96	0.517	13.7	84.4
	240.0	13.692	0.772	12.955	2779	1201	38.50	0.551	14.8	84.6
	240.0	13.489	0.839	12.859	2745	1255	38.53	0.576	15.6	84.8
	240.0	13.281	1.033	12.777	2708	1304	38.06	0.591	16.3	85.0
	240.0	13.064	1.302	12.716	2667	1351	37.37	0.601	16.8	85.1
	240.0	12.848	1.603	12.690	2625	1393	36.68	0.608	17.3	85.1
	240.0	12.634	1.923	12.683	2582	1433	35.16	0.600	17.3	85.1
	240.0	12.439	2.248	12.774	2543	1469	32.73	0.572	16.8	85.2
	240.0	12.256	2.599	12.882	2503	1502	30.45	0.544	16.2	85.1
	240.0	12.034	2.953	12.970	2454	1533	28.34	0.517	15.7	85.0
	240.0	11.875	3.218	13.095	2422	1562	26.26	0.488	15.0	85.0
	240.0	11.661	3.668	13.346	2364	1588	21.31	0.403	12.7	84.5
	240.0	11.460	4.050	13.564	2318	1613	18.01	0.346	11.1	84.3
	240.0	11.364	4.236	13.648	2289	1637	15.42	0.300	9.8	83.9
	240.0	11.188	4.559	13.868	2243	1659	12.59	0.249	8.3	83.5
	240.0	11.070	4.666	13.954	2216	1680	11.04	0.221	7.4	83.4
	240.0	10.895	4.998	14.185	2173	1698	7.17	0.145	5.0	83.1
	240.0	10.740	5.283	14.370	2133	1716	4.19	0.086	3.0	82.7
	240.0	10.639	5.476	14.597	2098	1735	0.57	0.012	0.4	82.1
	240.0	10.634	5.481	14.615	2094	1736	0.00	0.000	0.0	82.1

DRAWING NO. PAGE 5 of 16 REV.
484H30A -

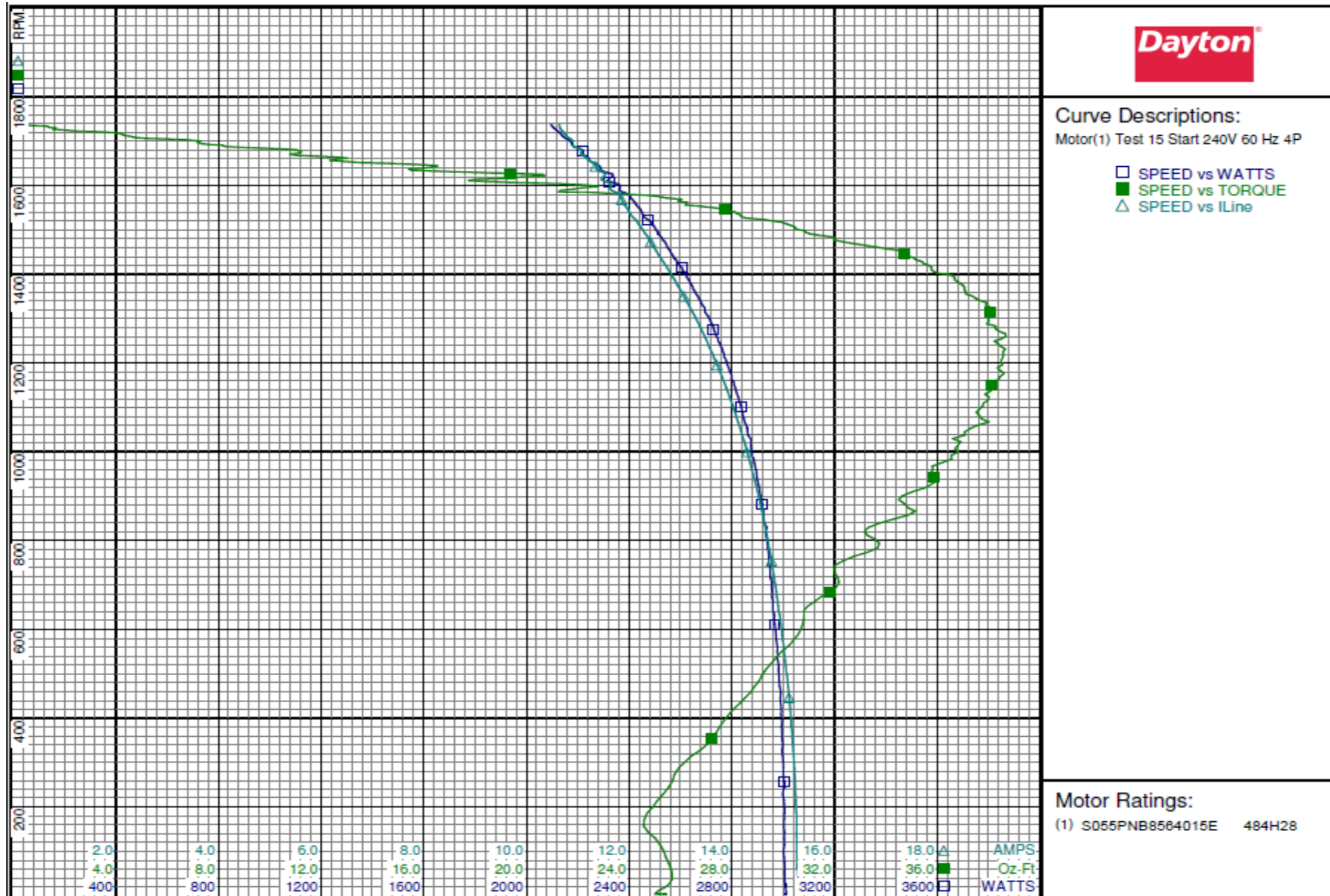
Performance Data



484H30A

REV.

-



DRAWING NO.	PAGE 6 of 16	REV.
484H30A		-

Dayton Electric Mfg. Co. Lake Forest, IL 60045 USA

Performance Data



484H30A	REV. -
----------------	-----------

Dayton Manufacturing Company

Motor Description

Model: S055PNB8564015E 484H28
 Motor ID: 1 of 1
 Poles: 4
 Volts: 100-120/200-240
 Frequency: 50&60
 HP: 1/4
 Speed: 1425&1725
 Phase: 1
 Protector: MEG58AFH

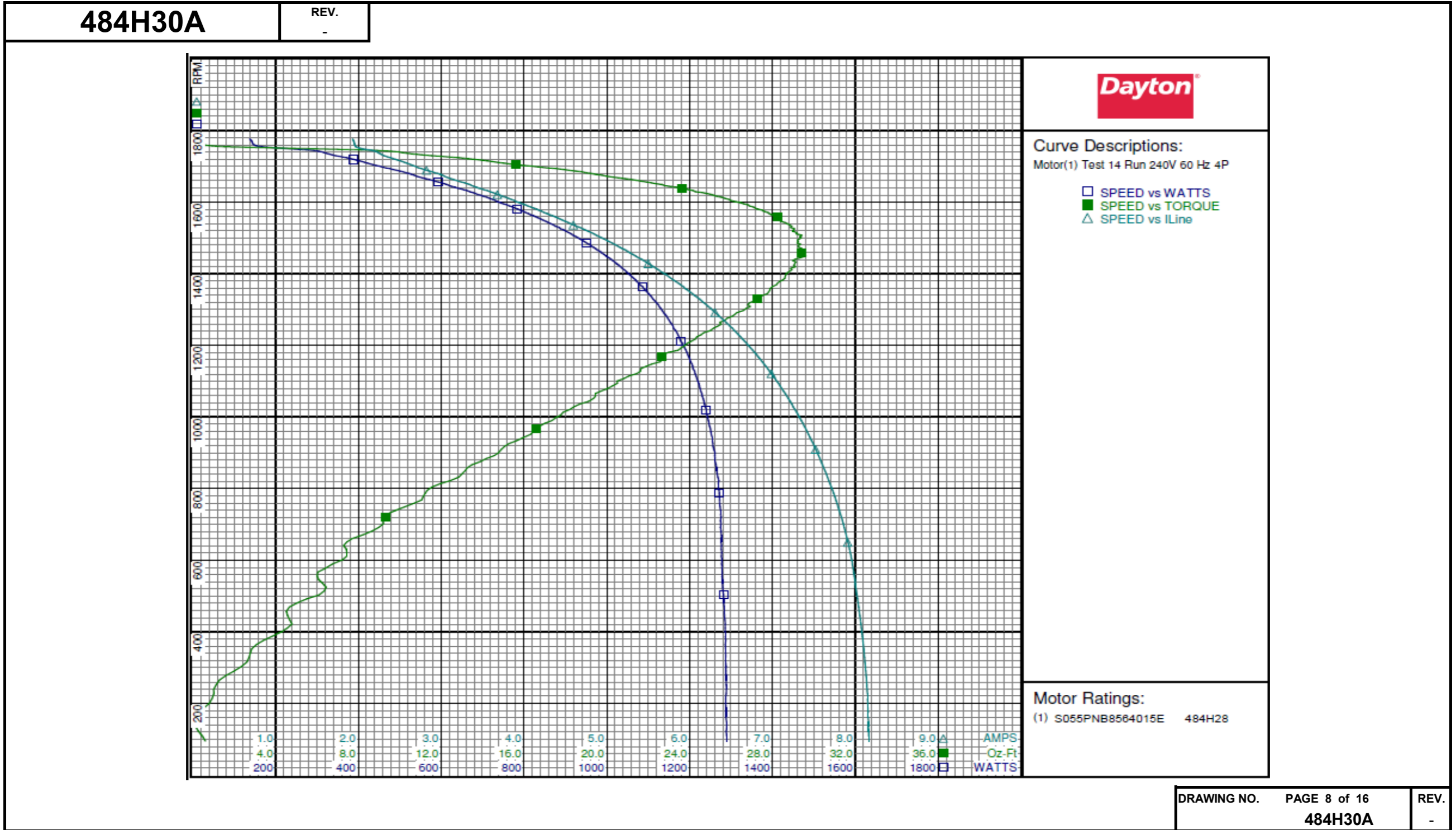
Test Conditions

Test Type: Run
 Test Number: 14
 Poles: 4
 Volts: 240
 Hz: 60
 Rotation:
 Special Cond:
 Speed Conn:
 TestBoard: Amtps Performance Fixture #3
 Run Cap: 0
 Start Cap: 0µfd
 Environment: 19.7 Deg C 19 % RH 1004 hPa
 Tested: 1/15/2018 7:52:28 AM
 Tested By: Sharp, Gerald
 Gear Ratio: 1:1
 Bearing Friction: -1.24 Oz-Ft
 Windage Torque: -3.48 Oz-Ft

Special Points	Vline (V)	Iline (A)	Watts	RPM	Tq (Oz-ft)	HP	Eff (%)	PF (%)
	240.0	1.928	137.6	1776	0.00	0.000	0.0	29.7
	240.0	1.969	165.4	1754	1.58	0.033	14.9	35.0
	240.0	2.253	322.3	1736	10.36	0.214	49.6	59.6
0.25 HP	240.0	2.343	357.5	1727	12.16	0.250	52.2	63.6
12.17 OZ-FT	240.0	2.344	357.7	1727	12.17	0.250	52.2	63.6
	240.0	2.504	402.1	1715	14.23	0.290	53.9	66.9
	240.0	2.760	475.2	1694	17.50	0.353	55.4	71.7
	240.0	3.064	548.2	1669	20.31	0.404	54.9	74.6
	240.0	3.372	620.1	1646	22.80	0.447	53.7	76.6
	240.0	3.680	688.2	1621	25.07	0.484	52.4	77.9
	240.0	4.011	757.9	1593	26.80	0.508	50.0	78.7
	240.0	4.340	822.2	1562	28.08	0.522	47.4	78.9
	240.0	4.676	884.5	1529	28.87	0.526	44.3	78.8
	240.0	5.002	941.3	1493	29.20	0.519	41.1	78.4
	240.0	5.318	993.7	1453	29.49	0.510	38.3	77.9
BDT OZ-FT	240.0	5.350	998.5	1449	29.60	0.510	38.1	77.8
	240.0	5.623	1042.1	1411	28.93	0.486	34.8	77.2
	240.0	5.919	1085.6	1364	28.01	0.455	31.3	76.4
	240.0	6.198	1123.8	1314	26.81	0.419	27.8	75.6
	240.0	6.463	1157.3	1258	25.52	0.382	24.6	74.6
	240.0	6.711	1185.0	1199	23.76	0.339	21.3	73.6
	240.0	6.941	1207.9	1135	21.64	0.292	18.1	72.5
	240.0	7.154	1229.1	1065	19.44	0.246	15.0	71.6
	240.0	7.347	1245.1	990	17.35	0.204	12.2	70.6
	240.0	7.521	1258.1	909	14.91	0.161	9.6	69.7
	240.0	7.679	1270.0	822	12.43	0.122	7.1	68.9
	240.0	7.817	1274.5	730	9.42	0.082	4.8	67.9
	240.0	7.928	1276.1	631	7.42	0.056	3.3	67.1
	240.0	8.004	1279.1	524	6.44	0.040	2.3	66.6
	240.0	8.072	1285.2	410	4.57	0.022	1.3	66.3
	240.0	8.125	1287.7	290	1.99	0.007	0.4	66.0
	240.0	8.155	1287.3	162	0.11	0.000	0.0	65.8

DRAWING NO.	PAGE 7 of 16	REV.
	484H30A	-

Performance Data



DRAWING NO.	PAGE 8 of 16	REV.
	484H30A	-

Dayton Electric Mfg. Co. Lake Forest, IL 60045 USA

Performance Data



484H30A REV.
-

Dayton Manufacturing Company

Motor Description

Model: S055PNB8564015E 484H28
 Motor ID: 1 of 1
 Poles: 4
 Volts: 100-120/200-240
 Frequency: 50&60
 HP: 1/4
 Speed: 1425&1725
 Phase: 1
 Protector: MEG58AFH

Test Conditions

Test Type: Start
 Test Number: 19
 Poles: 4
 Volts: 100
 Hz: 50
 Rotation:
 Special Cond:
 Speed Conn:
 TestBoard: Amtps Performance Fixture #3
 Run Cap: 0
 Start Cap: 0µfd
 Environment: 20.0 Deg C 9 % RH 1015 hPa
 Tested: 1/16/2018 1:03:58 PM
 Tested By: Sharp, Gerald
 Gear Ratio: 1:1
 Bearing Friction: -1.01 Oz-Ft
 Windage Torque: -2.74 Oz-Ft

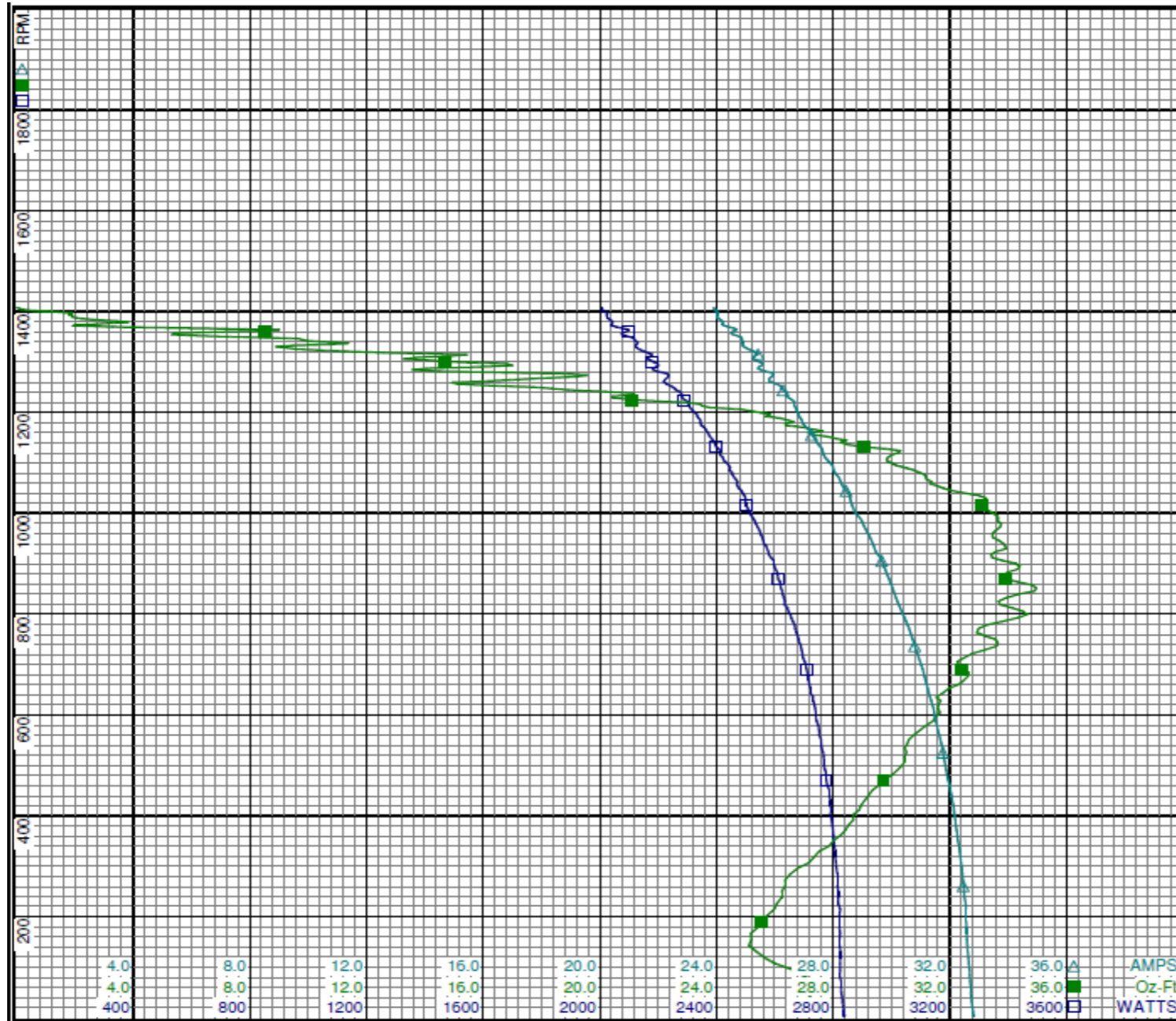
Special Points	Vline (V)	Iline (A)	Imain (A)	Iaux (A)	Watts	RPM	Tq(Oz-ft)	HP	Eff (%)	PF (%)
	100.0	32.83	14.909	18.433	2839	3	27.31	0.001	0.0	86.5
	100.0	32.78	14.929	18.361	2836	16	26.71	0.005	0.1	86.5
	100.0	32.65	14.958	18.138	2823	107	26.01	0.033	0.9	86.5
PUT OZ-FT	100.0	32.60	14.904	18.104	2822	143	25.11	0.043	1.1	86.6
	100.0	32.55	14.950	17.944	2823	214	25.98	0.066	1.8	86.7
	100.0	32.35	14.930	17.676	2806	318	27.34	0.104	2.8	86.7
	100.0	32.14	14.871	17.439	2793	411	28.89	0.141	3.8	86.9
	100.0	31.84	14.801	17.140	2768	499	30.36	0.180	4.9	86.9
	100.0	31.55	14.721	16.863	2749	579	31.18	0.215	5.8	87.1
	100.0	31.24	14.623	16.580	2721	652	31.97	0.248	6.8	87.1
	100.0	30.89	14.495	16.309	2694	721	32.75	0.281	7.8	87.2
	100.0	30.50	14.374	16.018	2662	785	33.81	0.316	8.9	87.3
	100.0	30.07	14.255	15.712	2625	845	34.90	0.351	10.0	87.3
	100.0	29.71	14.046	15.571	2595	900	34.25	0.367	10.6	87.3
	100.0	29.26	13.780	15.451	2556	952	33.46	0.379	11.1	87.4
	100.0	28.78	13.573	15.251	2515	999	33.49	0.398	11.8	87.4
	100.0	28.45	13.346	15.208	2486	1044	32.04	0.398	12.0	87.4
	100.0	28.01	13.067	15.157	2444	1085	30.75	0.397	12.1	87.3
	100.0	27.64	12.905	15.028	2412	1124	30.30	0.405	12.5	87.3
	100.0	27.21	12.541	15.117	2370	1159	27.15	0.375	11.8	87.1
	100.0	26.83	12.280	15.123	2334	1192	25.68	0.364	11.6	87.0
	100.0	26.64	12.075	15.204	2299	1222	21.96	0.320	10.4	86.3
	100.0	26.22	11.647	15.442	2250	1250	17.71	0.263	8.7	85.8
	100.0	25.96	11.591	15.301	2229	1277	18.73	0.285	9.5	85.9
	100.0	25.44	11.103	15.562	2182	1301	14.69	0.228	7.8	85.8
	100.0	25.17	10.765	15.795	2141	1323	10.29	0.162	5.6	85.1
	100.0	24.87	10.628	15.788	2119	1344	9.80	0.157	5.5	85.2
	100.0	24.68	10.559	15.797	2099	1364	9.00	0.146	5.2	85.0
	100.0	24.19	9.980	16.168	2041	1381	3.45	0.057	2.1	84.4
	100.0	24.02	9.748	16.299	2019	1399	1.43	0.024	0.9	84.0
	100.0	23.88	9.689	16.332	2007	1408	0.00	0.000	0.0	84.0

DRAWING NO. PAGE 9 of 16 REV.
484H30A -

Performance Data



484H30A REV. -



Dayton

Curve Descriptions:
Motor(1) Test 19 Start 100V 50 Hz 4P

- SPEED vs WATTS
- SPEED vs TORQUE
- △ SPEED vs ILine

Motor Ratings:
(1) S055PNB8564015E 484H28

DRAWING NO. PAGE 10 of 16 REV. -
484H30A

Dayton Electric Mfg. Co. Lake Forest, IL 60045 USA

Performance Data



484H30A

REV.

-

Dayton Manufacturing Company

Motor Description

Model: S055PNB8564015E 484H28
 Motor ID: 1 of 1
 Poles: 4
 Volts: 100-120/200-240
 Frequency: 50&60
 HP: 1/4
 Speed: 1425&1725
 Phase: 1
 Protector: MEG58AFH

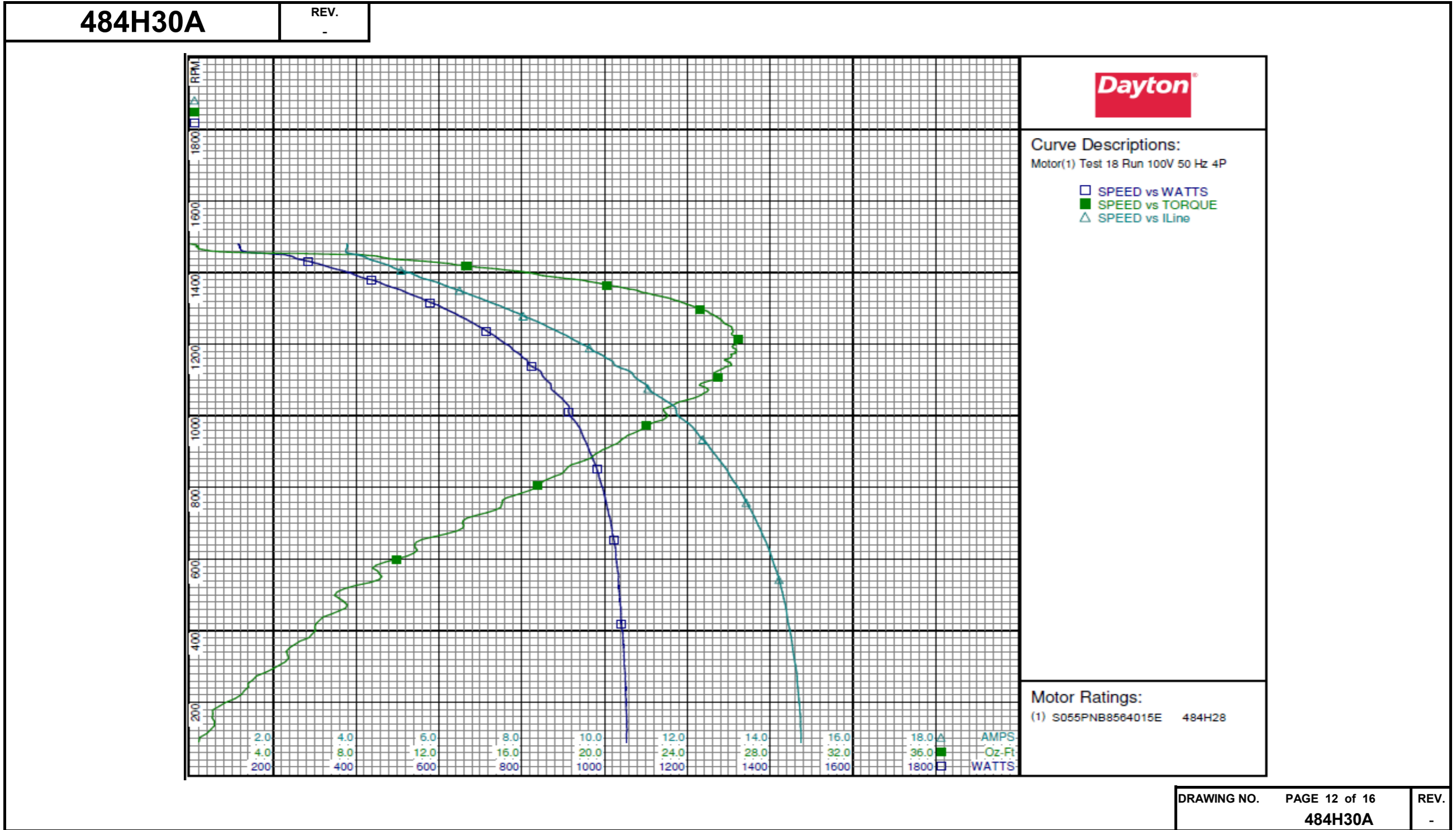
Test Conditions

Test Type: Run
 Test Number: 18
 Poles: 4
 Volts: 100
 Hz: 50
 Rotation:
 Special Cond:
 Speed Conn:
 TestBoard: Aamps Performance Fixture #3
 Run Cap: 0
 Start Cap: 0µfd
 Environment: 18.3 Deg C 8 % RH 1016 hPa
 Tested: 1/16/2018 7:47:56 AM
 Tested By: Sharp, Gerald
 Gear Ratio: 1:1
 Bearing Friction: -1.15 Oz-Ft
 Windage Torque: -2.82 Oz-Ft

Special Points	Vline (V)	Iline (A)	Watts	RPM	Tq (Oz-ft)	HP	Eff (%)	PF (%)
	100.0	3.781	114.7	1480	0.00	0.000	0.0	30.3
	100.0	3.760	121.2	1464	0.57	0.010	6.1	32.2
	100.0	4.031	226.3	1450	8.10	0.140	46.1	56.1
	100.0	4.417	276.7	1433	10.87	0.186	50.0	62.6
	100.0	4.845	329.0	1417	13.59	0.229	52.0	67.9
14.73 OZ-FT	100.0	4.961	348.8	1410	14.73	0.247	52.9	70.3
0.25 HP	100.0	4.987	352.4	1409	14.90	0.250	52.9	70.7
	100.0	5.258	381.9	1400	16.23	0.271	52.9	72.6
	100.0	5.625	423.6	1383	18.20	0.300	52.8	75.3
	100.0	6.117	470.9	1365	20.12	0.327	51.8	77.0
	100.0	6.605	519.3	1345	21.79	0.349	50.1	78.6
	100.0	7.094	565.5	1323	23.36	0.368	48.6	79.7
	100.0	7.599	611.1	1301	24.49	0.379	46.3	80.4
	100.0	8.088	653.7	1276	25.42	0.386	44.1	80.8
	100.0	8.607	695.9	1249	26.10	0.388	41.6	80.9
	100.0	9.128	737.2	1221	26.35	0.383	38.8	80.8
BDT OZ-FT	100.0	9.178	740.8	1217	26.46	0.383	38.6	80.7
	100.0	9.638	775.2	1190	26.22	0.371	35.7	80.4
	100.0	10.135	812.2	1156	25.79	0.355	32.6	80.1
	100.0	10.660	847.6	1120	25.28	0.337	29.7	79.5
	100.0	11.041	870.8	1081	24.79	0.319	27.3	78.9
	100.0	11.519	903.9	1039	23.62	0.292	24.1	78.5
	100.0	11.837	921.1	994	22.95	0.272	22.0	77.8
	100.0	12.282	947.1	945	21.09	0.237	18.7	77.1
	100.0	12.649	966.4	894	19.57	0.208	16.1	76.4
	100.0	13.005	985.5	837	17.90	0.178	13.5	75.8
	100.0	13.335	999.9	778	15.65	0.145	10.8	75.0
	100.0	13.630	1013.4	714	13.35	0.113	8.4	74.3
	100.0	13.900	1023.5	647	10.90	0.084	6.1	73.6
	100.0	14.120	1030.9	574	8.80	0.060	4.4	73.0
	100.0	14.311	1036.2	498	6.96	0.041	3.0	72.4
	100.0	14.438	1040.4	419	6.06	0.030	2.2	72.1
	100.0	14.564	1046.3	332	4.69	0.019	1.3	71.8
	100.0	14.663	1051.1	242	2.80	0.008	0.6	71.7
	100.0	14.733	1053.9	146	1.16	0.002	0.1	71.5

DRAWING NO. PAGE 11 of 16 REV.
 484H30A -

Performance Data



Dayton Electric Mfg. Co. Lake Forest, IL 60045 USA

Performance Data



484H30A REV.
-

Dayton Manufacturing Company

Motor Description

Model: S055PNB8564015E 484H28
 Motor ID: 1 of 1
 Poles: 4
 Volts: 100-120/200-240
 Frequency: 50&60
 HP: 1/4
 Speed: 1425&1725
 Phase: 1
 Protector: MEG58AFH

Test Conditions

Test Type: Start Run Cap: 0
 Test Number: 27 Start Cap: 0µfd
 Poles: 4 Environment: 20.3 Deg C 15 % RH 1006 hPa
 Volts: 200 Tested: 1/15/2018 10:04:50 AM
 Hz: 50 Tested By: Sharp, Gerald
 Rotation: Gear Ratio: 1:1
 Special Cond: Bearing Friction: -0.98 Oz-Ft
 Speed Conn: Windage Torque: -2.40 Oz-Ft
 TestBoard: Amtps Performance Fixture #3

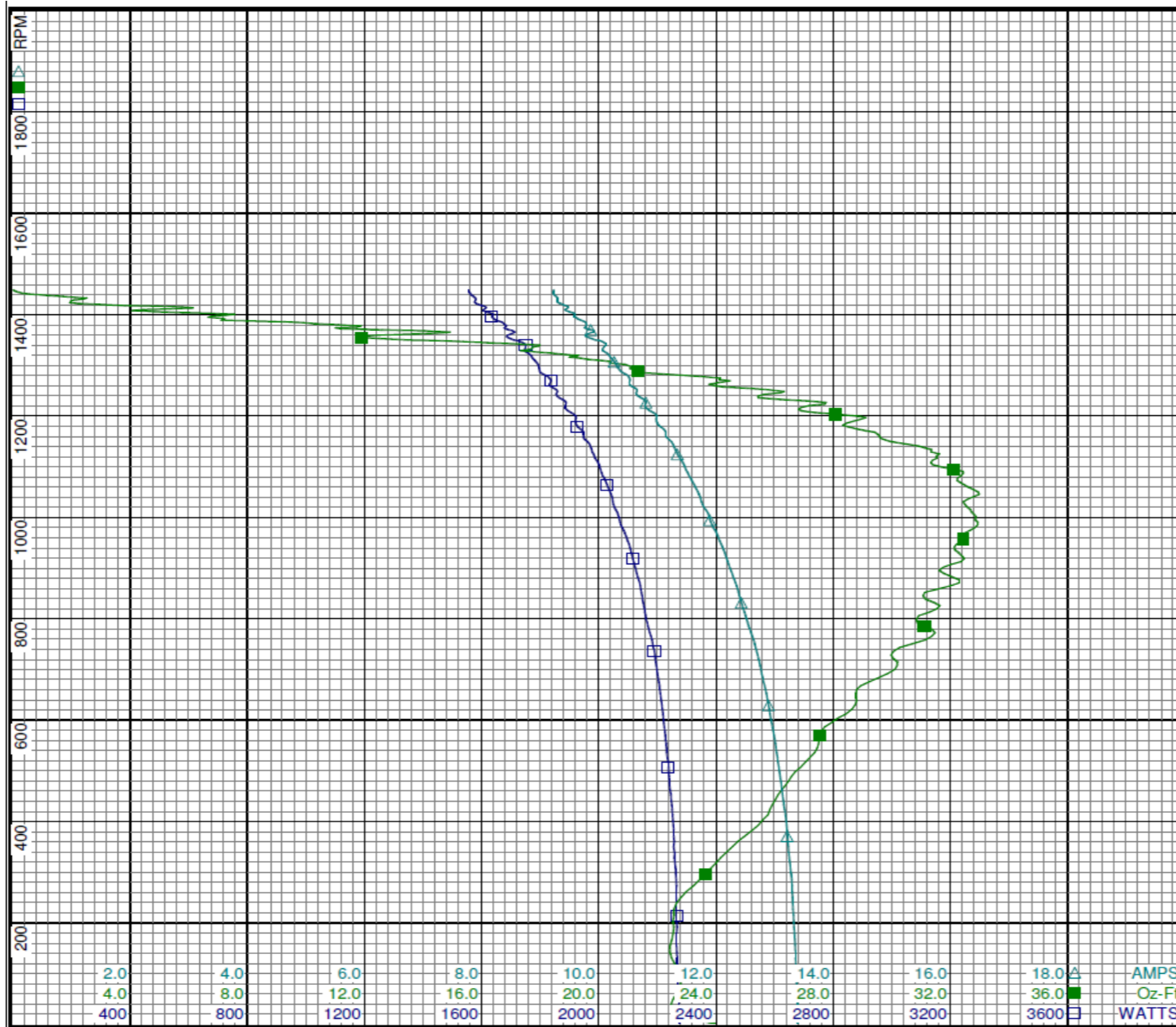
Special Points	Vline (V)	Iline (A)	Imain(A)	Iaux(A)	Watts	RPM	Tq(Oz-ft)	HP	Eff (%)	PF (%)
	200.0	13.401	3.314	12.917	2274	1	23.86	0.000	0.0	84.8
	200.0	13.392	3.295	12.886	2272	15	23.08	0.004	0.1	84.8
	200.0	13.362	3.164	12.743	2267	107	22.71	0.029	1.0	84.8
PUT OZ-FT	200.0	13.352	3.106	12.672	2266	143	22.42	0.038	1.3	84.9
	200.0	13.321	2.958	12.614	2265	215	22.57	0.058	1.9	85.0
	200.0	13.260	2.724	12.478	2260	318	23.99	0.091	3.0	85.2
	200.0	13.183	2.484	12.338	2251	413	25.77	0.127	4.2	85.4
	200.0	13.082	2.286	12.178	2238	498	26.70	0.158	5.3	85.5
	200.0	12.975	2.052	12.021	2225	578	27.59	0.190	6.4	85.7
	200.0	12.859	1.800	11.873	2210	653	28.78	0.224	7.5	85.9
	200.0	12.723	1.556	11.730	2193	722	30.05	0.258	8.8	86.2
	200.0	12.558	1.369	11.544	2168	785	31.11	0.291	10.0	86.3
	200.0	12.398	1.165	11.466	2148	845	31.06	0.312	10.9	86.6
	200.0	12.234	0.978	11.367	2124	901	31.73	0.340	12.0	86.8
	200.0	12.063	0.861	11.281	2098	953	32.34	0.367	13.0	87.0
	200.0	11.881	0.909	11.091	2068	1001	32.88	0.392	14.1	87.0
	200.0	11.711	0.975	11.120	2042	1045	32.98	0.410	15.0	87.2
	200.0	11.522	1.144	11.077	2010	1087	32.44	0.420	15.6	87.2
	200.0	11.342	1.353	11.101	1982	1125	31.62	0.423	15.9	87.4
	200.0	11.145	1.687	11.211	1947	1160	29.58	0.408	15.6	87.4
	200.0	10.978	1.901	11.222	1921	1193	28.92	0.411	16.0	87.5
	200.0	10.794	2.145	11.217	1887	1223	27.72	0.404	16.0	87.4
	200.0	10.653	2.338	11.258	1855	1252	25.74	0.384	15.4	87.1
	200.0	10.508	2.567	11.381	1827	1278	23.58	0.359	14.6	86.9
	200.0	10.295	2.951	11.609	1792	1302	20.88	0.324	13.5	87.0
	200.0	10.138	3.200	11.748	1759	1324	18.38	0.290	12.3	86.7
	200.0	10.094	3.294	11.756	1740	1345	16.22	0.260	11.1	86.2
	200.0	9.867	3.639	11.920	1710	1364	14.78	0.240	10.5	86.7
	200.0	9.783	3.856	12.106	1676	1382	10.30	0.169	7.5	85.7
	200.0	9.583	4.202	12.322	1638	1399	7.28	0.121	5.5	85.5
	200.0	9.480	4.297	12.433	1614	1415	5.76	0.097	4.5	85.1
	200.0	9.292	4.620	12.623	1580	1431	2.37	0.040	1.9	85.0
	200.0	9.220	4.733	12.767	1556	1446	0.11	0.002	0.1	84.4
	200.0	9.225	4.723	12.780	1556	1449	0.00	0.000	0.0	84.3

DRAWING NO. PAGE 13 of 16 REV.
484H30A -

Performance Data



484H30A REV. -



Dayton

Curve Descriptions:
Motor(1) Test 27 Start 200V 50 Hz 4P

- SPEED vs WATTS
- SPEED vs TORQUE
- △ SPEED vs ILine

Motor Ratings:
(1) S055PNB8564015E 484H28

DRAWING NO.	PAGE 14 of 16	REV.
	484H30A	-

Dayton Electric Mfg. Co. Lake Forest, IL 60045 USA

Performance Data



484H30A	REV. -
----------------	-----------

Dayton Manufacturing Company

Motor Description

Model: S055PNB8564015E 484H28
Motor ID: 1 of 1
Poles: 4
Volts: 100-120/200-240
Frequency: 50&60
HP: 1/4
Speed: 1425&1725
Phase: 1
Protector: MEG58AFH

Test Conditions

Test Type: Run
Test Number: 26
Poles: 4
Volts: 200
Hz: 50
Rotation:
Special Cond:
Speed Conn:
TestBoard: Amps Performance Fixture #3
Run Cap: 0
Start Cap: 0µfd
Environment: 19.7 Deg C 19 % RH 1004 hPa
Tested: 1/15/2018 8:06:41 AM
Tested By: Sharp, Gerald
Gear Ratio: 1:1
Bearing Friction: -1.21 Oz-Ft
Windage Torque: -2.93 Oz-Ft

Special Points	Vline (V)	Iline (A)	Watts	RPM	Tq (Oz-ft)	HP	Eff (%)	PF (%)
	200.0	1.892	110.7	1480	0.00	0.000	0.0	29.3
	200.0	1.925	122.1	1463	0.56	0.010	6.0	31.7
	200.0	2.073	226.9	1449	7.98	0.138	45.3	54.7
	200.0	2.216	276.2	1433	10.89	0.186	50.2	62.3
	200.0	2.422	325.9	1417	13.53	0.228	52.3	67.3
14.73 OZ-FT	200.0	2.499	344.8	1409	14.73	0.247	53.5	69.0
0.25 HP	200.0	2.524	352.1	1407	14.93	0.250	53.0	69.7
	200.0	2.602	373.5	1400	16.05	0.268	53.4	71.8
	200.0	2.830	420.3	1383	18.07	0.298	52.8	74.3
	200.0	3.060	469.4	1364	20.20	0.328	52.1	76.7
	200.0	3.291	516.1	1344	22.00	0.352	50.9	78.4
	200.0	3.539	561.9	1323	23.50	0.370	49.1	79.4
	200.0	3.793	607.3	1299	24.64	0.381	46.8	80.1
	200.0	4.048	651.1	1274	25.66	0.389	44.6	80.4
	200.0	4.304	693.8	1247	26.35	0.391	42.1	80.6
	200.0	4.561	734.3	1219	26.65	0.387	39.3	80.5
BDT OZ-FT	200.0	4.713	755.9	1201	26.71	0.382	37.7	80.2
	200.0	4.829	772.8	1187	26.63	0.376	36.3	80.0
	200.0	5.075	809.2	1153	26.24	0.360	33.2	79.7
	200.0	5.317	842.6	1117	25.68	0.341	30.2	79.2
	200.0	5.549	872.6	1077	24.99	0.320	27.4	78.6
	200.0	5.770	901.4	1035	23.78	0.293	24.2	78.1
	200.0	5.980	926.3	989	22.64	0.267	21.5	77.4
	200.0	6.182	949.0	940	20.98	0.235	18.4	76.8
	200.0	6.367	968.8	889	19.43	0.206	15.8	76.1
	200.0	6.542	986.5	832	17.80	0.176	13.3	75.4
	200.0	6.705	1001.9	772	15.48	0.142	10.6	74.7
	200.0	6.853	1014.1	708	13.17	0.111	8.2	74.0
	200.0	6.985	1024.4	639	10.87	0.083	6.0	73.3
	200.0	7.101	1031.2	567	8.67	0.059	4.2	72.6
	200.0	7.191	1036.4	490	7.00	0.041	2.9	72.1
	200.0	7.259	1042.2	410	5.91	0.029	2.1	71.8
	200.0	7.317	1047.5	323	4.39	0.017	1.2	71.6
	200.0	7.365	1050.9	232	2.39	0.007	0.5	71.3
	200.0	7.395	1051.8	135	0.34	0.001	0.0	71.1

DRAWING NO.	PAGE 15 of 16	REV.
	484H30A	-

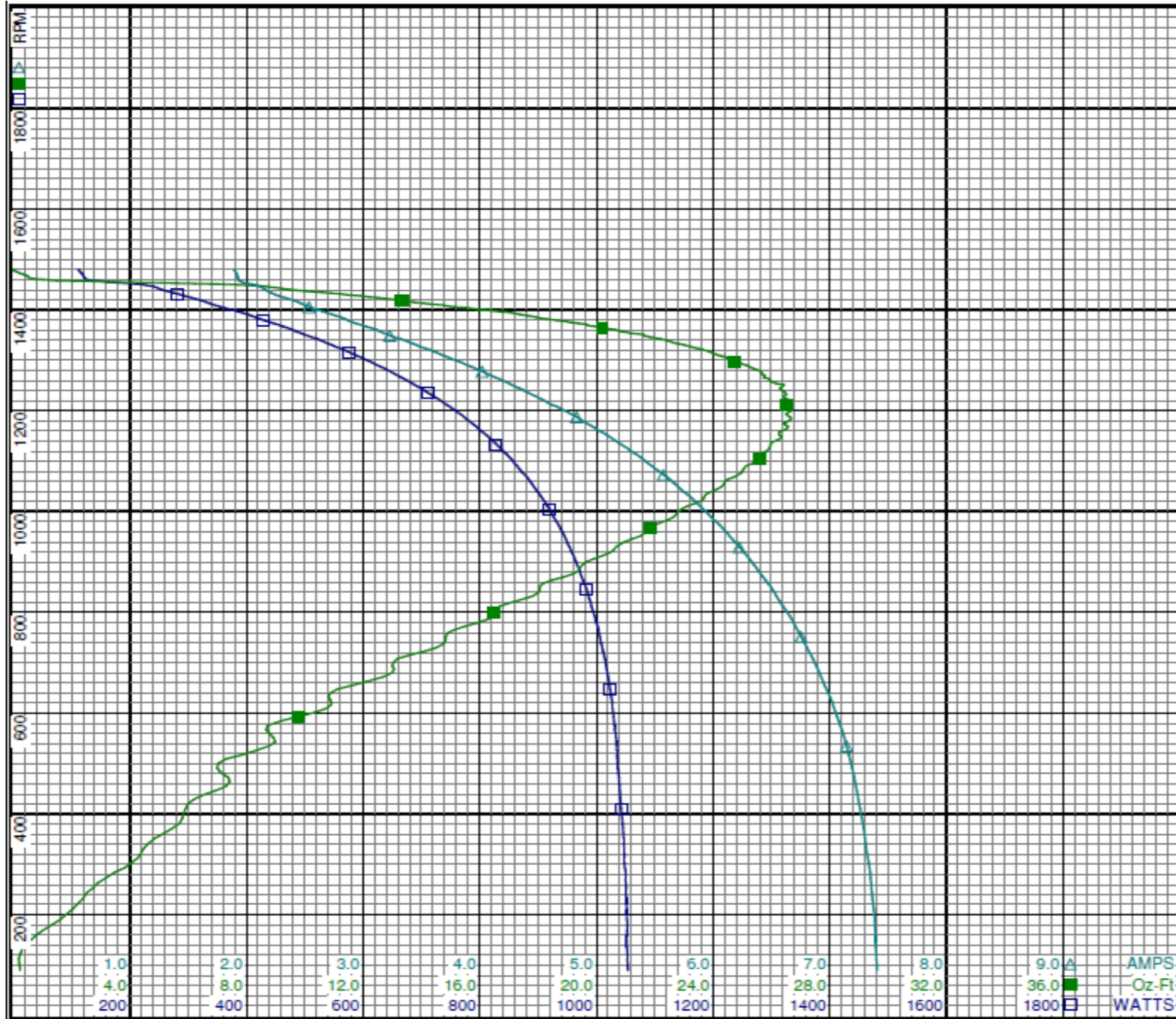
Performance Data



484H30A

REV.

-



Curve Descriptions:
 Motor(1) Test 26 Run 200V 50 Hz 4P

- SPEED vs WATTS
- SPEED vs TORQUE
- △ SPEED vs ILine

Motor Ratings:
 (1) S055PNB8564015E 484H28

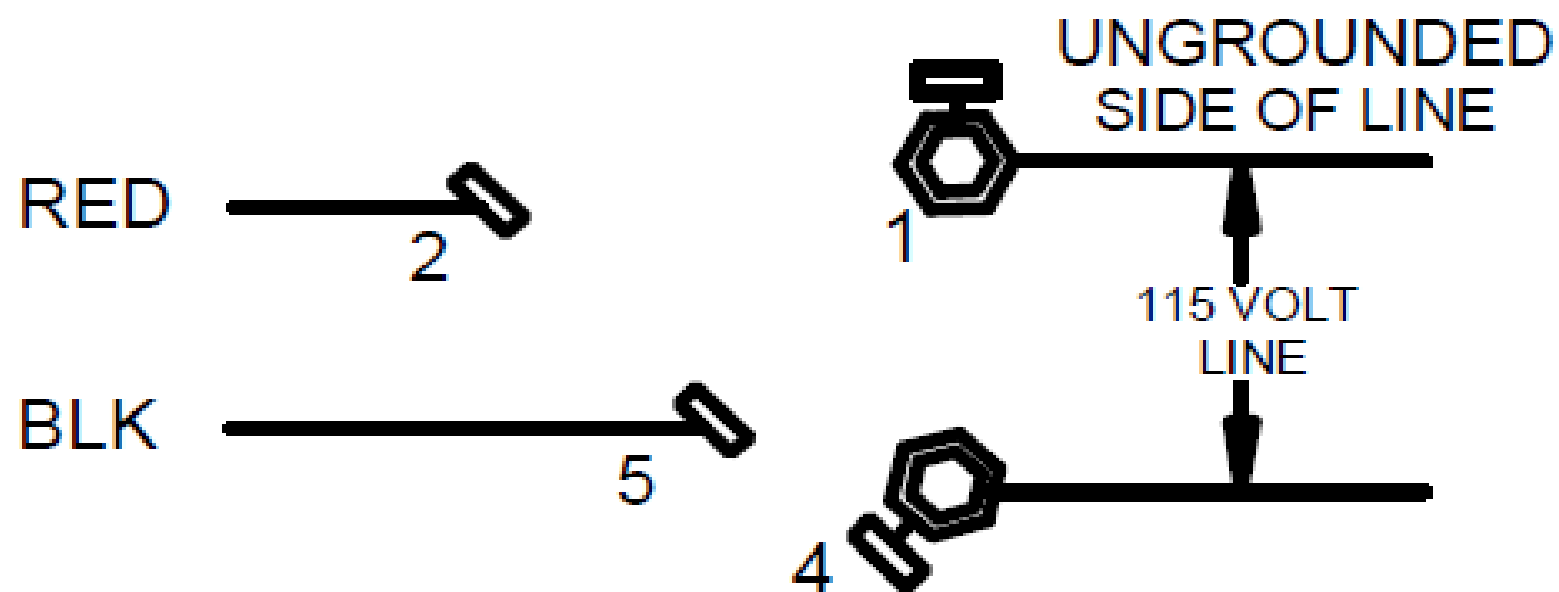
DRAWING NO.	PAGE 16 of 16	REV.
484H30A		-

Dayton Electric Mfg. Co. Lake Forest, IL 60045 USA

484H30A

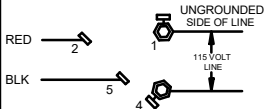
REV.
-

CONNECTIONS



ROTATION CCW LE
TO REVERSE ROTATION
INTERCHANGE RED & BLK LEADS

DRAWING NO.	PAGE 1 of 1	REV.
484H30A		-

Dayton[®]**CARBONATOR PUMP
MOTOR****HP:** 1/3
VOLTS: 115**AMPS:** 6.5
RPM: 1725
DUTY: CONT**SF:** 1.0
KVA CODE: R
ENCL: ODP**THERMALLY PROTECTED:** AUTO
MFG. NO. PROT. CODE: 04120
MTR REF: S55JXRSY-8548**PH:** 1
HZ: 60
FR: 48YZ
INS CL: F
AMB: 40°C
SFA: 6.5AVG. F.L.
EFF.Part
No. **484H30A****Disconnect Power Before Making Any
Electrical Connections or Changes****CONNECTIONS****ROTATION CCW LE
TO REVERSE ROTATION
INTERCHANGE RED & BLK LEADS****CE**[®] **US**
E37403

Mfd for Dayton Electric Mfg. Co., Lake Forest, IL 60045 USA

Made in Mexico