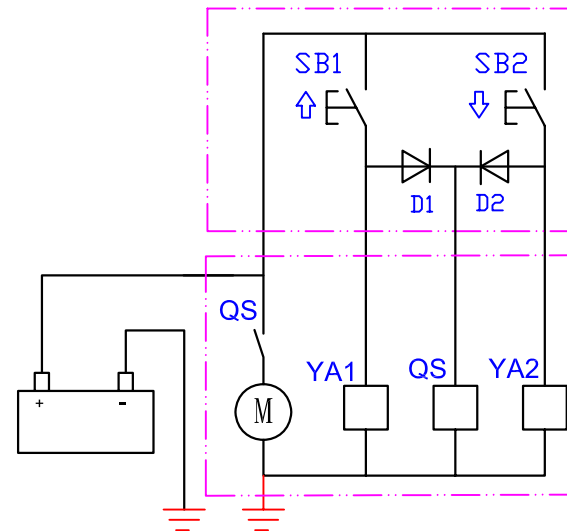


Hydraulic Schematic

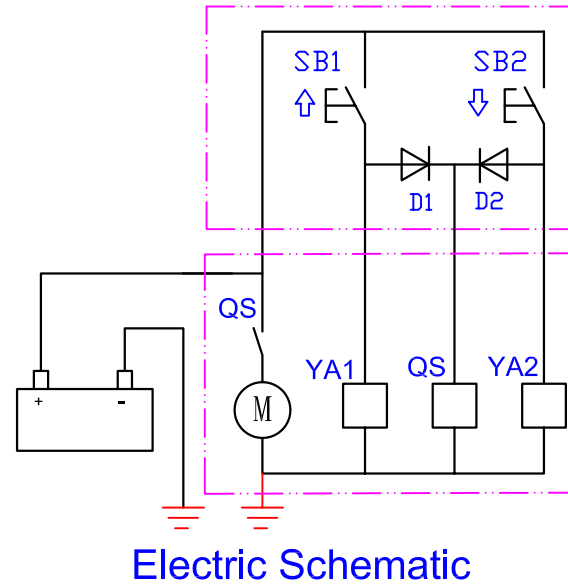
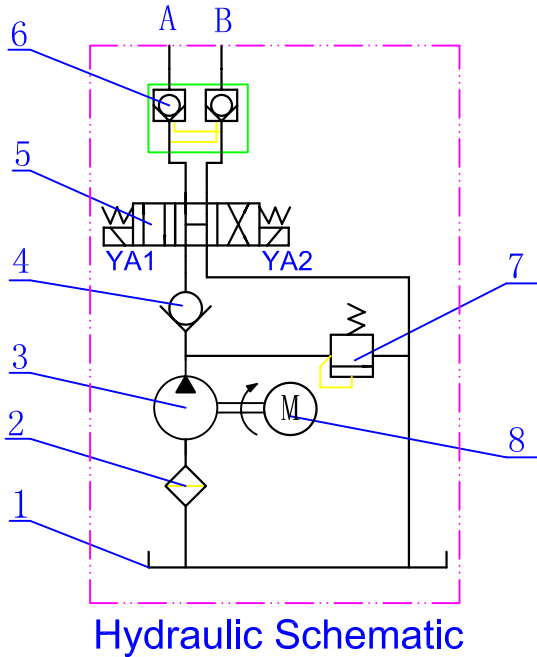
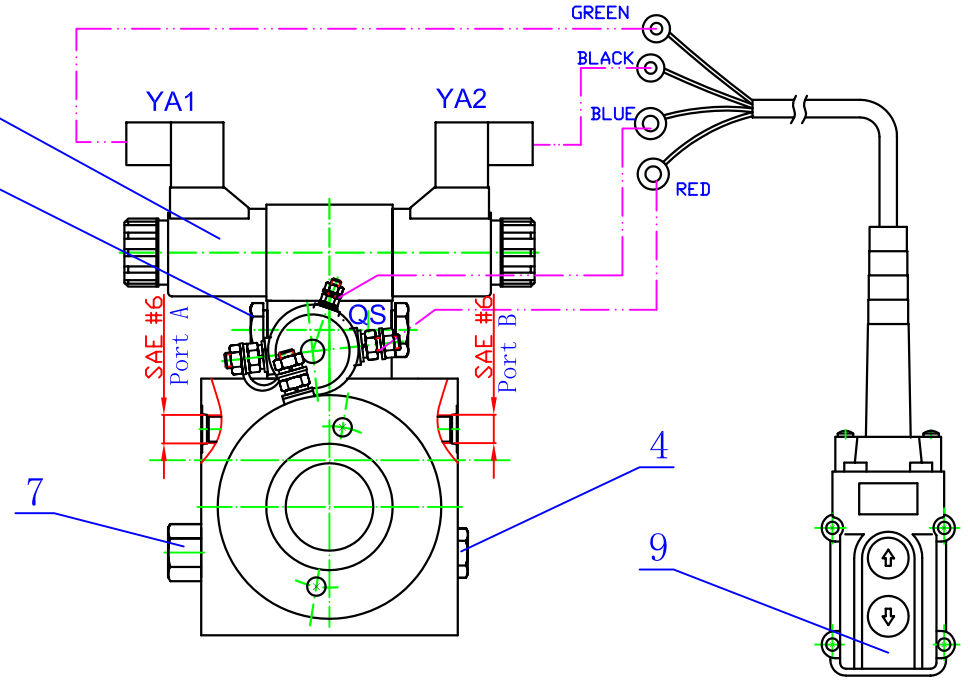
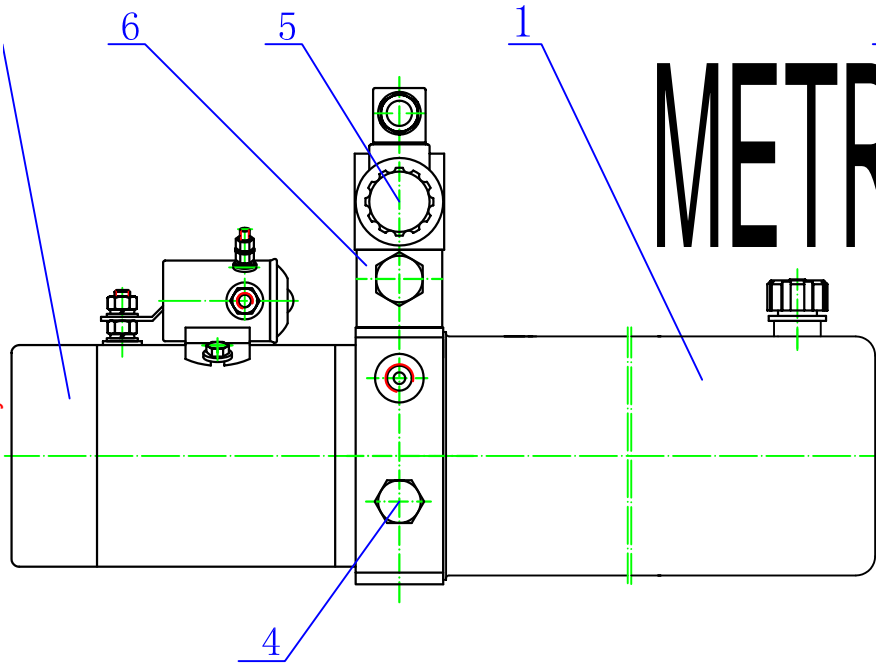


Electric Schematic

NAME: HYDRAULIC POWER UNIT  
PART#: 253-100

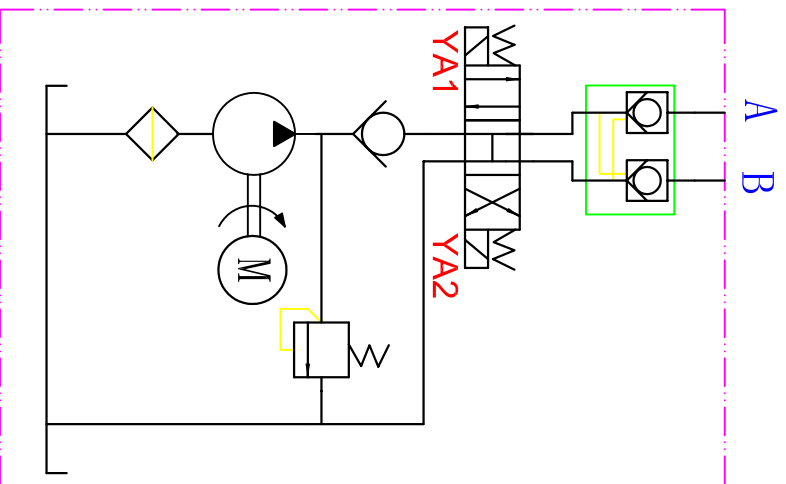
9	Remote Control	2 Botton, 4 Lines, 10 feet long
8	DC Motor	2.0 HP, 12V, 2600RPM, S3 duty
7	Relief Valve	Relief Pressure 2538 PSI
6	Dual-pilot check valve	
5	Solenoid Valve	12VDC, 3P4W, Normally Open
4	Check Valve	
3	pump	CBK-F2.1F, 0.128 Cu.In/Rev
2	Suction filter	
1	Tank	Steel, 3.17 Qt, Horizontal
NO.	Description	Technica data

# METRIC

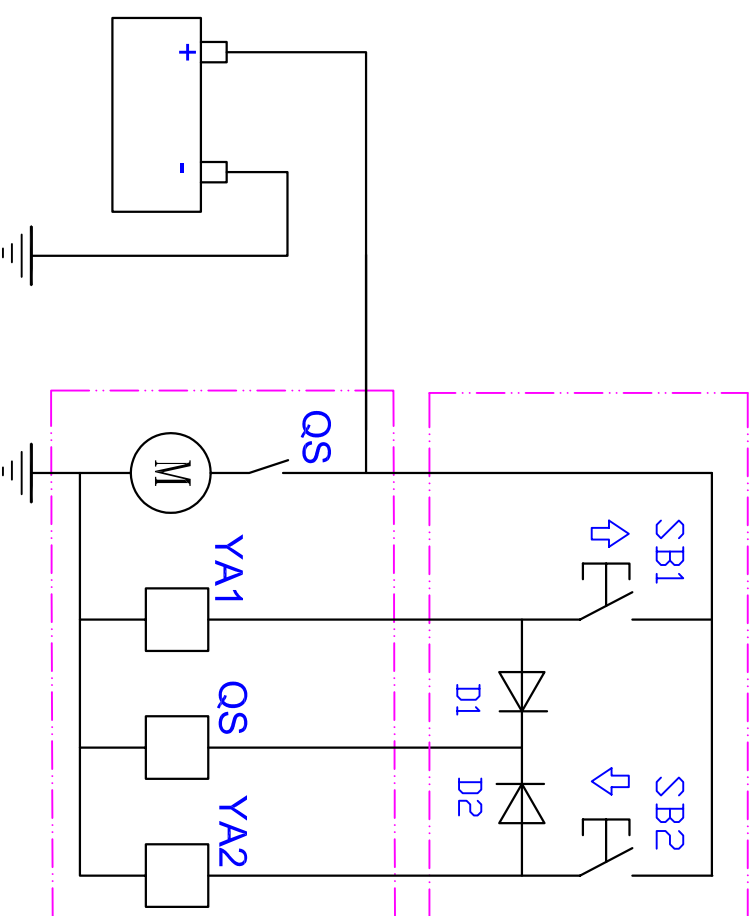


NAME: HYDRAULIC POWER UNIT  
 PART#: 253-100

9	Remote Control	2 Button, 4 Lines, 3 Meter
8	DC Motor	1.5KW, 12V, 2600RPM
7	Relief Valve	Relief Pressure 17.5Mpa
6	Dual-pilot check valve	
5	Solenoid Valve	12VDC, 3P4W, Normally Open
4	Check Valve	
3	pump	CBK-F2.1F, 2.1mL/r
2	Suction filter	
1	Tank	Steel, 3L, Horizontal
NO.	Description	Technica data



Hydraulic Schematic



Electric Schematic

Product Name: Hydraulic Power Unit  
 Part Number: 253-100