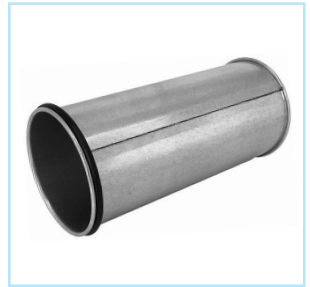


Quick-Fit® Sleeve with O-Ring

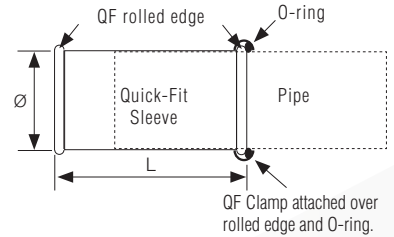
Ordering Information

- Used to provide variable length adjustment of QF System. Each QF pipe section is 5 ft. in length. To accommodate an existing span of less than 5', a sleeve is used to shorten. Formerly known as Adjustable Nipple.
- Solid welded seams prevent leakage.
- Nitrile (black) O-ring included standard.
- Specify Silicone (red) O-ring (high temp rating) if needed (additional cost). Replace on-site.



Construction

Longitudinal seam is laser welded.



Ø in.	ID in.	OD in.	Rolled Edge (nom in.)	L in.	Weight Lbs
3	3.16	3.15	0.2	11.250	0.80
4	3.96	4.03	0.2	11.375	1.05
5	4.96	5.03	0.2	11.375	1.30
6	5.99	6.06	0.2	11.375	1.60
7	7.00	7.07	0.3	11.125	2.40
8	8.00	8.06	0.3	11.125	2.70
9	9.00	9.06	0.3	11.125	3.05
10	10.00	10.07	0.3	11.125	3.40
11	11.12	11.19	0.3	11.125	3.80
12	12.11	12.17	0.4	10.875	4.20
13	13.12	13.20	0.4	10.875	4.70
14	14.10	14.18	0.4	10.875	5.85
15	15.12	15.20	0.4	10.875	6.25
16	16.10	16.18	0.4	10.875	6.65
17	17.07	17.15	0.4	10.875	7.45
18	18.10	18.18	0.4	10.875	7.45
19	19.13	19.21	0.4	10.875	8.10
20	20.10	20.18	0.4	10.875	8.80
21	21.25	21.33	0.4	10.875	9.70
22	22.11	22.19	0.4	10.875	8.10
23	23.13	23.21	0.4	10.875	8.80
24	24.06	24.14	0.4	10.875	9.70

QF Material Options

Galv			SS		
Gauges	Size (inches)		Gauges	Size (inches)	
	Min. Ø	Max. Ø		Min. Ø	Max. Ø
Standard	22	3	12	22	3
	20	13	24	20	13
Optional	18	4	24		

The Quick-Fit Sleeve provides an easy way to adjust in areas where you need straight duct sections shorter than 5'



Measure distance to be spanned.



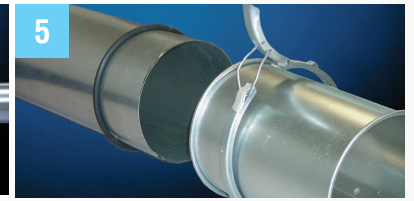
Mark distance to be spanned less 4".



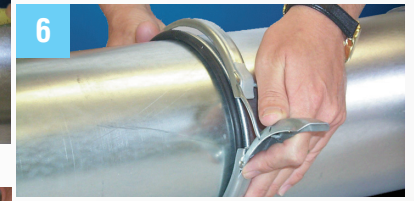
Use O-ring provided and mark for cut.



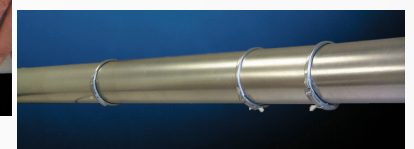
Drill access hole, then cut Pipe with saw.



Place O-ring on the cut pipe and slide a Quick-Fit Sleeve over the cut piece.



Snap clamp over O-ring and one end of nipple.



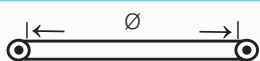
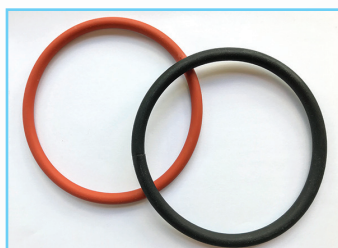
Finished connection with the Quick-Fit Sleeve

NOTE: POSITION CUT PIPE IN THE SAME DIRECTION AS THE AIRFLOW.

O-Ring for Quick-Fit Sleeve

Ordering Information

- Replacement O-ring for use with Quick-Fit Sleeve.
- Specify Black for standard applications.
- Specify Red for high temp material. Higher quantities may require 7 - 10 working days lead time.



Ø ID in.	Cord Ø mm	Weight Lbs
3	7	0.01
4	7	0.02
5	7	0.03
6	7	0.04
7	9	0.08
8	9	0.09
9	9	0.10
10	9	0.11
11	9	0.17
12	11	0.22
13	11	0.23
14	11	0.25
15	11	0.26
16	11	0.27
17	11	0.28
18	11	0.29
20	11	0.30
22	11	0.31
24	11	0.33