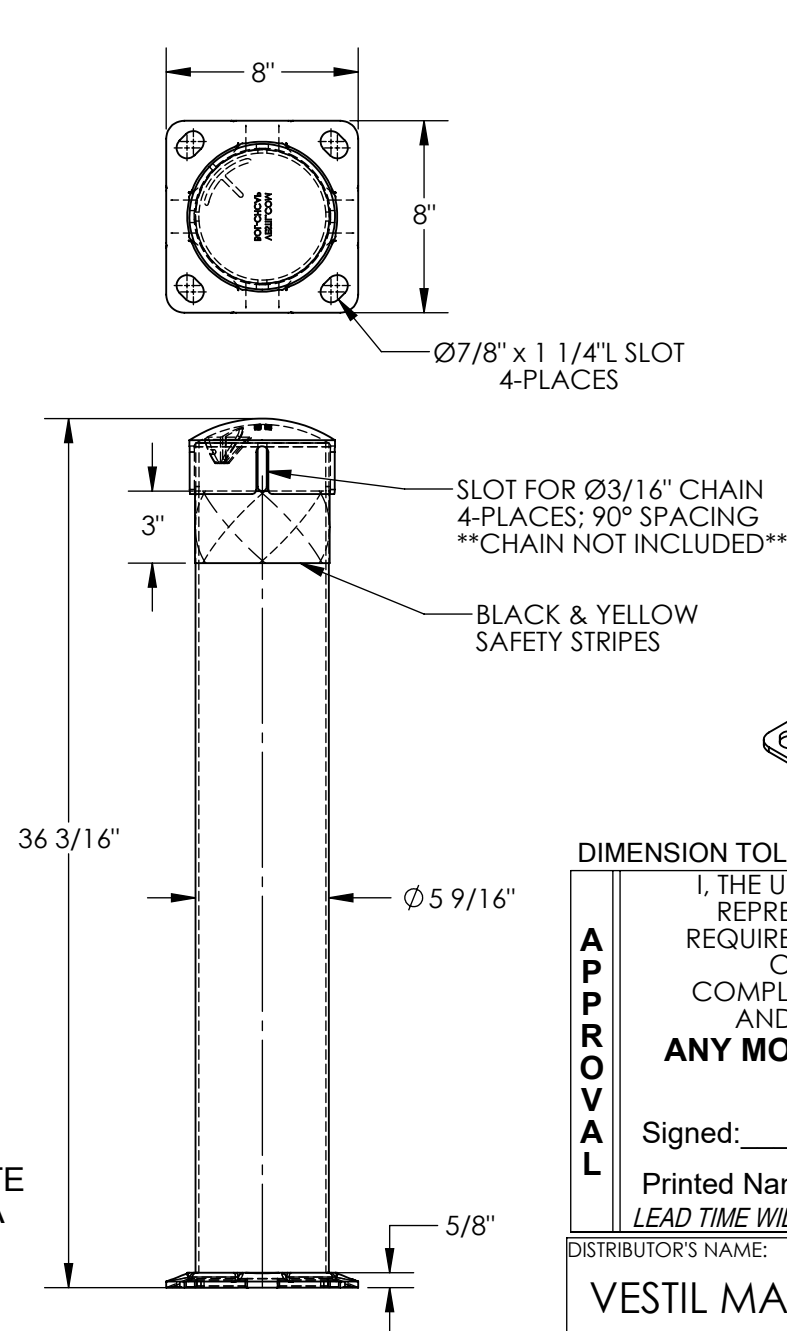


# STEEL BOLLARD WITH CHAIN SLOTS - BOL-JKS-36-5.5

APPROX WEIGHT: 31.47 lbs.  
DOES NOT INCLUDE WEIGHT OF POWER OR PACKAGING!!!

\*\*\* ANY ADDITIONS, DELETIONS, OR OMISSIONS MUST BE CORRECTED ON THIS DRAWING AS THIS DRAWING WILL BE CONSIDERED ALL INCLUSIVE \*\*\*

ALL GRAPHICS PROVIDED ARE FOR REFERENCE ONLY. IF CERTAIN DIMENSIONS ARE CRITICAL PLEASE VERIFY THOSE DIMENSIONS WITH YOUR SALESPERSON



## STANDARD FEATURES

MODEL NUMBER IS BOL-JKS-36-5.5  
HEIGHT: 36 3/16"  
DIAMETER: Ø5 9/16"  
5/8" x 8" x 8" BASEPLATE  
REMOVABLE BOLT-ON STEEL CAP  
(4) SLOTS FOR Ø3/16" CHAIN  
BLACK & YELLOW SAFETY STRIPES  
TOUGH BAKED IN POWDER  
COATED YELLOW FINISH  
ALL STEEL CONSTRUCTION  
(ASTM A-36 MIN.) WITH  
WELDING TO MEET AWS  
WARNING: CHECK APPLICABLE STATE  
& LOCAL LAWS FOR YOUR AREA

## SPECIAL FEATURES

NONE

FOR INTERNAL USE ONLY PROJECT SIGN OFF	
SALES	
ENG.	
FAB.	
POWER	

DIMENSION TOLERANCE  $\pm 1/4"$

APPROVAL

I, THE UNDERSIGNED, AGREE THAT THE PRODUCT AS REPRESENTED SATISFIES DESIGN AND DIMENSION REQUIREMENTS. I ALSO ACKNOWLEDGE MY DUTY TO CONFIRM PRODUCT AND INSTALLATION COMPLIANCE WITH ALL APPLICABLE FEDERAL, STATE AND LOCAL REGULATIONS AND STANDARDS.

**ANY MODIFIED UNITS ARE NON-RETURNABLE**

[ ] As drawn [ ] As marked

Signed: \_\_\_\_\_ Date: \_\_\_\_\_

Printed Name: \_\_\_\_\_

LEAD TIME WILL START UPON RECEIPT OF SIGNED APPROVAL DRAWING

DISTRIBUTOR'S NAME:

VESTIL MANUFACTURING

DRAWN BY: TJM

DATE: 10/6/14

REFERENCE: X

SCALE: 1:8

QUOTED LEAD TIME: X

QUOTE # X

P.O.# X

W.O.# X

SALES: X

FILE NAME:

23-007-538