

AVAILABLE THROUGH

GRAINGER[®]

FOR THE ONES WHO GET IT DONE

GRAINGER.COM[®] | 1.800.GRAINGER



LW-PX900

Rugged • Dependable • Exceptional

LIFETIME
WARRANTY

The Epson LW-PX900 industrial labeling solution represents the flagship of the Epson LABELWORKS PX fleet. Designed with innovative features that save time and tape, the LW-PX900 features high-speed print output so you can print precise labels, barcodes, QR codes and wire identification labels faster and with better detail than competing printer models. Plus we've packed all of this printing power into a rugged body that meets MIL-SPEC drop test specifications and is fully-backed by Epson's industry-leading lifetime warranty.

LABELWORKS PX

Industry-Leading Savings • Industry-Leading Warranty

GRAINGER # 45VZ82

FEATURES AND FUNCTIONS

Save Tape

Say goodbye to unnecessary tape waste! Customize your margins for optimal tape savings. Our auto-rewind technology pulls unused tape back into the machine, giving a tight 4mm lead margin and 1mm margins on printed labels.



Mix-Length Function

Save time by printing various length labels all in a single strip of labels, separated only by Epson's half-cut feature that cuts only the label, not the backing. Print labels the size you need quickly and conveniently.



Automatic Half-Cut

The LW-PX900 comes with an automatic cutter for optimal efficiency. Choose between half and full-cut for your desired project. Half-cut can save you time on label assembly, full-cut can save you time on label distribution. Customize for YOUR needs!



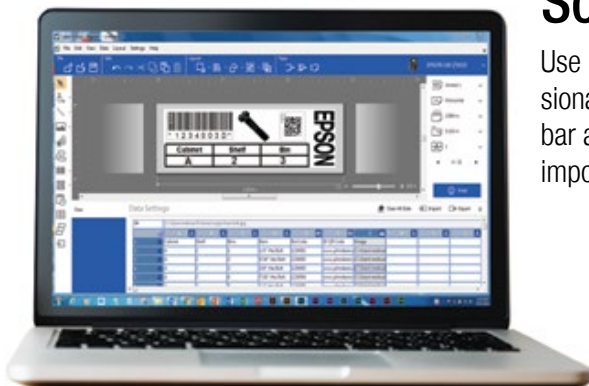
Designed Efficiency

Features like "Pick and Print" and "Drop Stop" are designed for efficient printing in the field. As your labels print, the LW-PX900 holds them in place until you are ready to apply.



Software-Compatible

Use Epson's Label Editor software to create professional labels for your entire workplace. Print images, bar and QR codes, tables and logos. Batch print by importing spreadsheets. It makes printing efficient!



*Screen Content Simulated

**LABELWORKS PX PRINTERS
WITH AN INDUSTRY-LEADING
LIFETIME WARRANTY**

**LIFETIME
WARRANTY**

MORE SIZES, MORE COLORS

For All Your Industrial Labeling Needs



STANDARD INDUSTRIAL TAPES - 30'

| | |
|-------------|--------------------------|
| 1/6" 4mm | BLACK on white |
| Item # | 45WA07 |

| | | | | | | |
|-------------|--------------------------|--------------------------|---------------------------|--------------------------|-------------------------|------------------------|
| 1/4" 6mm | BLACK on clear | BLACK on white | BLACK on yellow | WHITE on black | BLACK on blue | BLACK on red |
| Item # | 45WA08 | 45WA09 | 45WA10 | 45WA11 | 45WA12 | 45WA13 |

| | | | | | | |
|-------------|--------------------------|--------------------------|---------------------------|--------------------------|-------------------------|------------------------|
| 3/8" 9mm | BLACK on clear | BLACK on white | BLACK on yellow | WHITE on black | BLACK on blue | BLACK on red |
| Item # | 45WA14 | 45WA15 | 45WA16 | 45WA17 | 45WA18 | 45WA19 |

| | | | | | | | | | | | | | | |
|--------------|--------------------------|--------------------------|---------------------------|--------------------------|-------------------------|------------------------|--------------------------|------------------------------|--------------------------------|-------------------------------|-------------------------|-------------------------|--------------------------|---|
| 1/2" 12mm | BLACK on clear | BLACK on white | BLACK on yellow | WHITE on black | BLACK on blue | BLACK on red | BLACK on green | WHITE on vivid red | WHITE on vivid green | WHITE on vivid blue | GOLD on clear | GOLD on Black | WHITE on clear | BLACK on White Removable Adhesive |
| Item # | 45WA21 | 45WA20 | 45WA22 | 45WA23 | 45WA24 | 45WA25 | 45WA26 | 45WA27 | 45WA28 | 45WA29 | 45WA30 | 45WA32 | 45WA31 | 45WA33 |

| | | | | | | | | | | | | |
|--------------|--------------------------|--------------------------|---------------------------|--------------------------|-------------------------|------------------------|---------------------------|---------------------------|------------------------------|--|--------------------------------|-------------------------------|
| 3/4" 18mm | BLACK on clear | BLACK on white | BLACK on yellow | WHITE on black | BLACK on blue | BLACK on red | BLACK on orange | BLACK on violet | WHITE on vivid red | WHITE on vivid orange <i>(Limited Supply)</i> | WHITE on vivid green | WHITE on vivid blue |
| Item # | 45WA40 | 45WA41 | 45WA42 | 45WA44 | 45WA45 | 45WA46 | 45WA47 | 45WA48 | 45WA49 | 45WA50 | 45WA51 | 45WA52 |

| | | | | | | | | | |
|------------|--------------------------|--------------------------|---------------------------|--------------------------|-------------------------|------------------------|------------------------------|--------------------------------|-------------------------------|
| 1" 24mm | BLACK on clear | BLACK on white | BLACK on yellow | WHITE on black | BLACK on blue | BLACK on red | WHITE on vivid red | WHITE on vivid green | WHITE on vivid blue |
| Item # | 45WA54 | 45WA55 | 45WA56 | 45WA57 | 45WA58 | 45WA59 | 45WA60 | 45WA62 | 45WA63 |

| | | | | |
|----------------|--------------------------|--------------------------|---------------------------|--------------------------|
| 1 1/2" 36mm | BLACK on clear | BLACK on white | BLACK on yellow | WHITE on black |
| Item # | 45WA65 | 45WA66 | 45WA67 | 45WA69 |

SPECIALTY TAPES

Silver Matte - 30'



| | | |
|------------------------------------|----------------|------------------|
| Black on silver matte | 3/4" (18mm) | 1 1/2" (36mm) |
| Item # | 45WA53 | 45WA70 |

Strong Adhesive - 30'



| | | |
|---------------|--------------------------|---------------------------|
| | Black on white | Black on yellow |
| 1 1/2" (36mm) | 45WA73 | 45WA72 |

Self-Laminating Overwrap



| | |
|--------|---|
| 55MJ66 | 1/4" Vinyl material Black on white 3/4" Clear Tail (26') |
| 55MJ65 | 1/2" Vinyl Material Black on white 1" Clear Tail (26') |

Wire wrap tape prints on white area and has clear tail to overlap printed material.

Die Cut (For Use With LW-PX900 Only) - *Limited Supply*



| Black on White | | |
|--|--|--|
| Circle | Oval | Rectangle |
| 25mm 1" 224CBWPX 180 labels per roll | 25mm x 38mm 1" x 1.5" 224OBWPX 140 labels per roll | 25mm x 38mm 1" x 1.5" 224SBWPX 140 labels per roll |

Magnetic Tape - 11'



| | | | | |
|-------------|---------------------------|------------------------|-------------------------|--------------------------|
| | Black on yellow | Black on red | Black on blue | Black on green |
| 1/2" (12mm) | 45VZ87 | 45VZ88 | 45VZ90 | 45VZ89 |
| 3/4" (18mm) | -- | 45VZ93 | 45VZ95 | -- |
| 1" (24mm) | -- | 45VZ98 | 45WA01 | 45VZ99 |

Shrink Tube - 96"



Compliance Standards: UL Standard 224 (Related Temperature: 125°C, Rated Voltage: 300V, Flame Resistance Grade VW-1)

| | AWG | Black on red | Black on yellow | Black on white | Black on green | Black on blue | White on black |
|-------|--------|------------------------|---------------------------|--------------------------|--------------------------|-------------------------|--------------------------|
| 1/8" | 14-22 | 48GE85 | 48GE81 | | | | |
| 3/16" | 8-12 | 48GE86 | 48GE87 | 48GE88 | | | 48GE84 |
| 3/16" | 10-20 | | | | 48GE82 | 48GE83 | |
| 1/4" | 10-20 | | 48GE90 | 48GE89 | | | |
| 3/8" | 4-12 | | | 48GE91 | | | |
| 1/2" | 2-8 | 48GE94 | 48GE92 | 48GE93 | | | 48GF02 |
| 9/16" | 0-5 | | 48GE96 | 48GE95 | | | |
| 7/8" | 0000-1 | | 48GE98 | 48GE97 | | | |

Polyolefin Shrink Tube Cartridge Color & Sizes (length=96")

Fluorescent - 30'



| | | | | |
|--|---|---|---|--|
| Black on fluorescent red 3/4" (18mm) | Black on fluorescent pink 3/4" (18mm) | Black on fluorescent orange 3/4" (18mm) | Black on fluorescent yellow 3/4" (18mm) | Black on fluorescent green 3/4" (18mm) |
| 45WA35 | 45WA36 | 45WA37 | 45WA38 | 45WA39 |

Reflective Tape - 4' 9"



| | |
|--------|---|
| 45WA78 | 1" Black on Reflective white - <i>Limited Supply</i> |
|--------|---|

AVAILABLE THROUGH

GRAINGER[®]

FOR THE ONES WHO GET IT DONE

GRAINGER.COM[®] | 1.800.GRAINGER

SPECIFICATIONS

LABELWORKS PX LW-PX900

| Model Number | LW-PX900 |
|----------------------------|---|
| Printing | |
| Technology | Thermal Transfer |
| Tape Width | 4-36mm |
| Resolution | 360 dpi |
| Printer head width | 27.1 mm |
| Max Print Speed | 35mm / sec (With AC Adapter) |
| Store and Print Images | No storage, Print from PC |
| Print Settings | |
| Repeat Printing | Yes |
| Auto Increment | Yes |
| Data Import | Yes |
| Number Serialization | Up to 4 alpha-numeric characters |
| Mirror Printing | Yes |
| Vertical Printing | Yes |
| Mix Length | Yes |
| Margins | Minimum 4mm lead on standard industrial tapes. Specialty tape lead margin varies by supply Batch printing settings from 1 to 500mm |
| Fixed Length | Auto / Custom |
| Cable Wrap | Yes |
| Flag | Yes |
| QR Code | Yes |
| Barcodes | Via Printer: 9 types EAN 8, EAN 13, Code 39, Code 128, UPC-A, UPC-E, ITF, CodaBar, QR Code via Label Editor: 15 types EAN 8, EAN 13, Code 39, Code 128, UPC-A, UPC-E, ITF, CodaBar, QR Code, NW-7 (CodaBar), EAN-128(GS1-128), GS1 DataBar, MaxiCode, PDF417, DataMatrix |
| Symbols | 859 industrial and professional symbols pre-loaded |
| Hardware | |
| Cutter | Automatic with full and half-cut function |
| Detection | Cover Open, Battery Level, Tape Detection (Type and size), Tape End |
| Drop-Stop & Pick-and-Print | Prints, cuts and holds tape until it is pulled from printer before printing the next label in the batch automatically |
| LCD | 140 x 80 dot back-lit monochrome LCD, 16 character, 4 line |
| Internal Memory | Up to 100 files |
| Connectivity | |
| Interface | USB |
| Software Download | Epson Label Editor: Windows 7, 8, 8.1, 10 |
| Other Information | |
| AC Adapter | Yes |
| Battery | 6AA (Not Included), Lithium-Ion Battery included |



LW-PX900PCD Kit Item #: 45VZ82

- LW-PX900 printer
- AC Adapter
- 212BWPX tape cartridge
- Lithium-Ion Battery
- Attachable Magnetic Feet
- Label Editor software download
- USB cable
- Owner's manual
- Industrial carrying case

© 2021 Epson LABELWORKS PX. All Rights Reserved. Reproduction in part or in whole, without the written permission from Epson, is strictly prohibited. EPSON and EXCEED YOUR VISION are registered trademarks of Seiko Epson Corporation. All other products names and other company names used herein are for identification purposes only and are the trademarks or registered trademarks of their respective owners. Epson disclaims any and all rights in those marks. Print samples shown are simulations only. Specifications and product availability are subject to change without notice and may vary between countries. Please check with local Epson offices for more information.