

AQUASPEC[®] FAUCETS

MODEL - Z85500-XL SERIES
DOUBLE FOOT PEDAL VALVE



TECHNICAL INFORMATION

MAXIMUM PRESSURE: 125 PSI

MAXIMUM TEMPERATURE: 180° F

CARTRIDGE STYLE: ZURN SELF CLOSING FOOT PEDAL CARTRIDGE

⚠ WARNING: Cancer and Reproductive Harm - www.P65Warnings.ca.gov

⚠ ADVERTENCIA: Cáncer y daño reproductivo - www.P65Warnings.ca.gov

⚠ AVERTISSEMENT: Cancer et effets néfastes sur la reproduction - www.P65Warnings.ca.gov

INSTALLATION INSTRUCTIONS

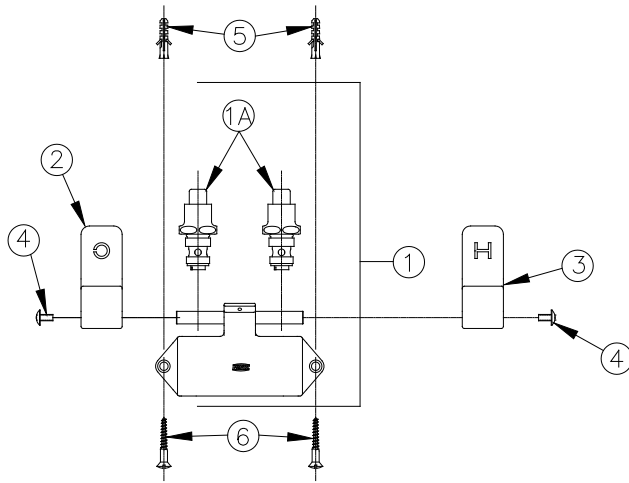
1. BE SURE SUPPLY LINES ARE THOROUGHLY FLUSHED BEFORE INSTALLATION.
 2. REMOVE FOOT PEDAL VALVE FROM CARTON AND MOUNT TO WALL USING WOOD MOUNTING SCREWS.
 3. CONNECT OUTLET PIPING TO 3/8" NPT PORT ON OF VALVE.
 4. CONNECT SUPPLY PIPING TO 1/2" NPT STOPS. (ONLY WALL MOUNT UNIT PROVIDED WITH STOPS)
 5. TURN SUPPLY WATER ON AND OPERATE FOOT PEDAL CHECKING FOR LEAKS.
-

MAINTENANCE

1. YOUR ZURN AQUASPEC FOOT PEDAL VALVE HAS A HIGHLY POLISHED NICKEL CHROME PLATED FINISH. CLEAN WITH SOAP AND WATER OR A MILD CLEANER WHICH IS SAFE FOR CHROME PLATING. DO NOT USE ACIDS OR TOILET BOWL CLEANER AS THEY WILL DAMAGE THE FINISH.
 2. G67948 SELF-CLOSING VALVE ASSEMBLY (ITEM #1A OR #6A) MAINTENANCE
 - 2.1. REMOVE SELF-CLOSING VALVE ASSEMBLY (ITEM #1A OR #6A) USING ADJUSTABLE WRENCH. USE CARE TO AVOID DAMAGING THE POLISHED CHROME FINISH.
 - 2.2. RE-ASSEMBLE SELF-CLOSING VALVE TO FOOT PEDAL VALVE BODY ASSEMBLY
 - 2.3. TURN ON WATER SUPPLY AND TEST FOR FUNCTION AND LEAKS AROUND SELF-CLOSING VALVE ASSEMBLY.
-

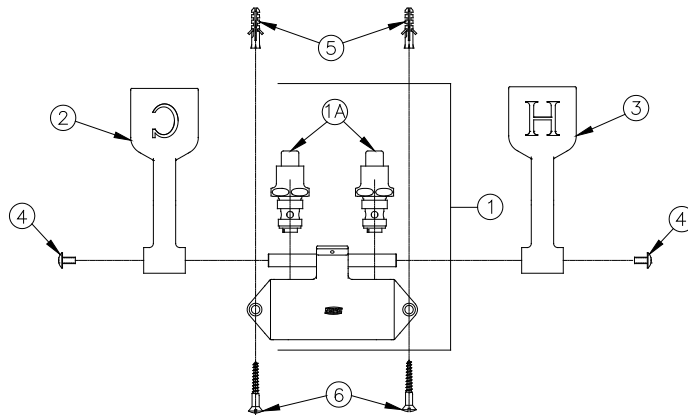
REPLACEMENT PARTS

G67948 SELF CLOSING VALVE ASSEMBLY



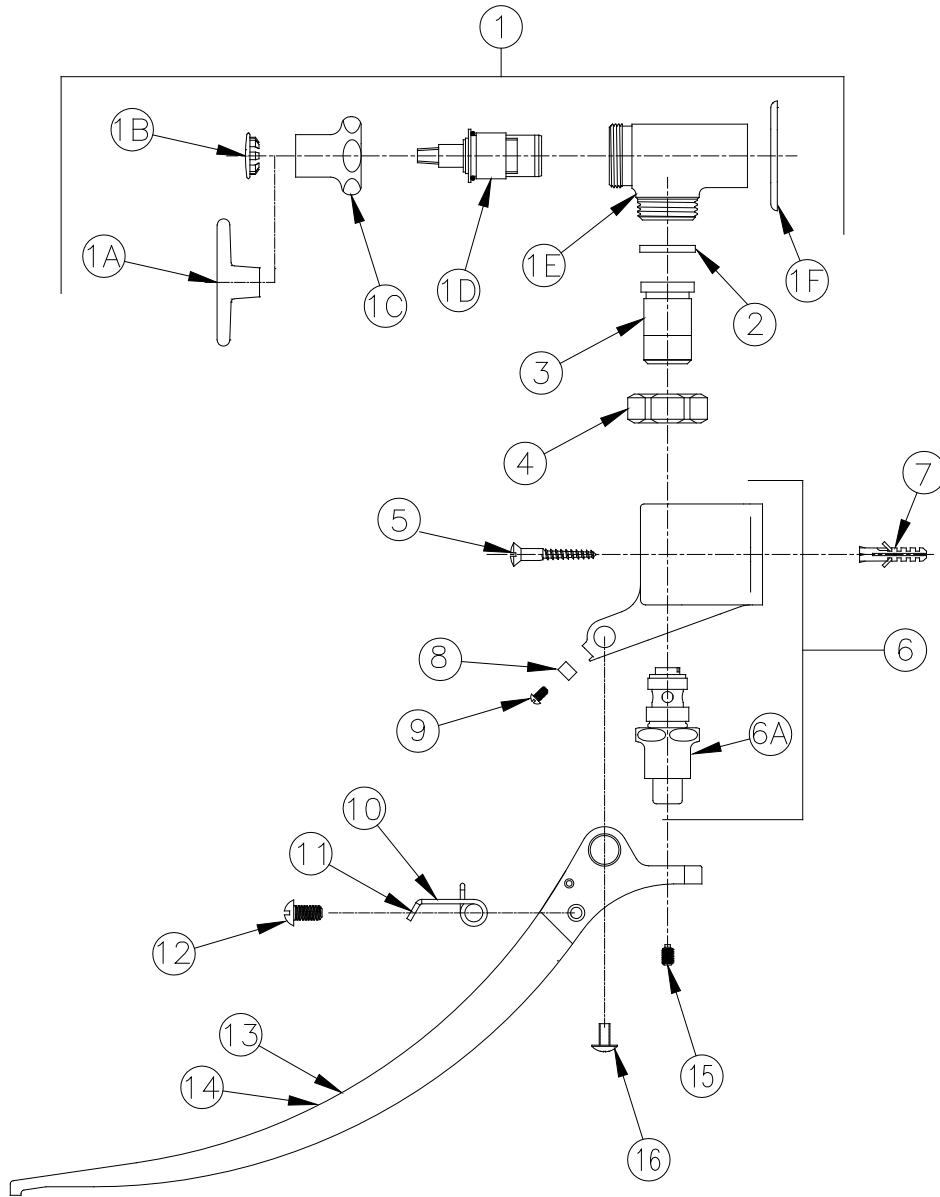
Z85500-XL PICTURED

Item	Part Number	Description	Qty.
1	G67961	Body Assembly	1
1A	G67948	Self Closing Valve Assembly	2
2	80348001	Short Cold Foot Pedal	1
3	80348002	Short Hot Foot Pedal	1
4	92345001	10-32 Screw	2
5	62359001	Wall Anchor	2
6	61817001	#12 1-1/2" Wood Screw	2



Z85500-XL-LM PICTURED

Item	Part Number	Description	Qty.
1	G67961	Body Assembly	1
1A	G67948	Self Closing Valve Assembly	2
2	80499003	Medium Cold Foot Pedal	1
3	80499002	Medium Hot Foot Pedal	1
4	92345001	10-32 Screw	2
5	62359001	Wall Anchor	2
6	61817001	#12 1-1/2" Wood Screw	2



Z85500-XL-WM PICTURED

Item	Part Number	Description	Qty.	Item	Part Number	Description	Qty.
1	G67988	Foot Pedal Stop Assembly	2	6A	G67948	Self-Closing Valve Assembly	2
1A	61551001	Tee Handle	1	7	62359001	Wall Anchor	2
1B	59667001	Plug	1	8	59744002	Plate	1
1C	60807001	Nut	1	9	59742002	Screw	1
1D	59517006	Hot Cartridge	1	10	59738002	Spring (Right)	1
1E	300597001	Stop Body	1	11	59738001	Spring (Left)	1
1F	62334001	Escutcheon	1	12	59742001	Screw	2
2	59748001	Gasket	1	13	80428002	Pedal (Hot)	1
3	60751003	Adaptor	2	14	80428003	Pedal (Cold)	1
4	60752001	Nut	2	15	60749001	Set Screw	2
5	61817001	1-1/2" Flat Head Wood Screw	2	16	92345001	10-32 Screw	2
6	G67961	Body Assembly	1				