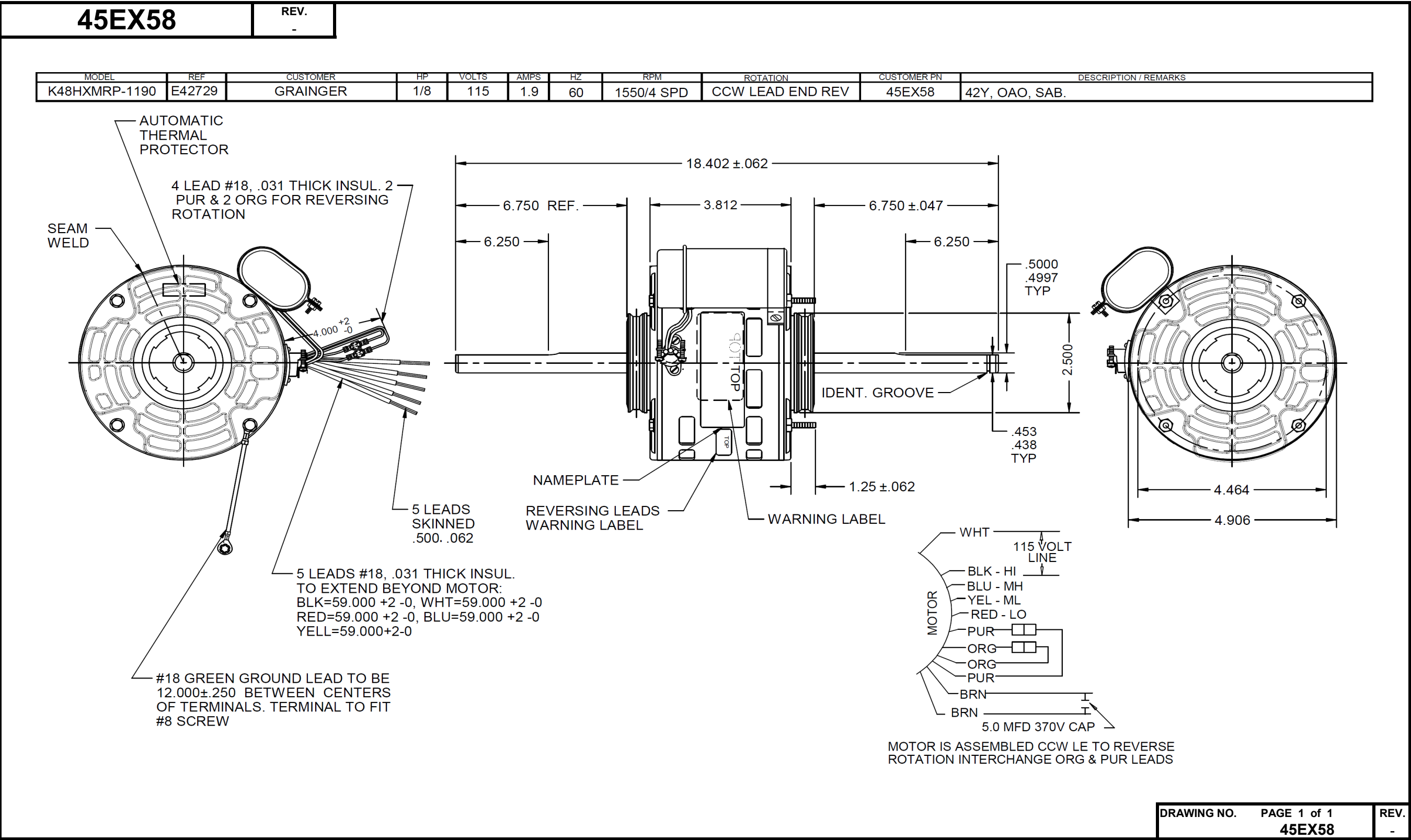


Dimensional Drawing



**45EX58**

 REV.  
-

## SHADED-POLE & PSC MOTOR PERFORMANCE

HP:	1/8							
Poles:	4							
Ambient (°C):	40							
Altitude (FASL):								
No. of Speeds:	4							
HIGH SPEED								
Volts:	115	115	208	230	277	460	100	200
HZ:	60	60	60	60	60	60	50	50
Service Factor:	1							
Efficiency:	@ Rated Load	52.80						
Power Factor:	@ Rated Load	88.50						
Amps:	@ No Load	1.11						
	@ Rated Load	1.74						
	@ Locked Rotor	2.00						
RPM:	@ Rated Load	1545.00						
Torques:	Breakdown	10.72						
	Locked Rotor	2.80						
	Pull-Up	4.00						
	Rated Load	6.80						
	Service Factor	6.80						
Watts:	Rated Load	176.60						
Temperature Rise:	@ Rated Load	N/A						
Thermal Protector:	Trip Temp (°C)	N/A						
Winding Material:	Start (Auxiliary)	Cu						
	Run (Main)	Cu						
Capacitor(s):	Run (MFD / Volts)	5 MFD / 370 V						
	No. of Run Capacitors	N/A						
MEDIUM-HIGH SPEED								
HP:	1/8							
Volts:	115	115	208	230	277	460	100	200
HZ:	60	60	60	60	60	60	50	50
Efficiency:	@ Rated Load	53.00						
Power Factor:	@ Rated Load	89.90						
Amps:	@ No Load	0.75						
	@ Rated Load	1.32						
	@ Locked Rotor	2.00						
Torques: Oz.Ft. / Lb.In. (Circle One)	Breakdown	8.43						
	Locked Rotor	2.80						
	Pull-Up	4.00						
	Rated Load	5.27						
Watts:	@ Rated Load	137.00						
Temperature Rise:	@ Rated Load	N/A						

 DRAWING NO. PAGE 1 of 1 REV.  
**45EX58** -

**Dayton Electric Mfg. Co. Lake Forest, IL 60045 USA**

**45EX58**

 REV.  
-

## SHADED-POLE & PSC MOTOR PERFORMANCE

### MEDIUM-LOW SPEED

<b>HP:</b>	1/8							
<b>Volts:</b>	115	120	208	230	277	460	100	200
<b>HZ:</b>	60	60	60	60	60	60	50	50
<b>Efficiency:</b>	@ Rated Load	53.70						
<b>Power Factor:</b>	@ Rated Load	90.80						
<b>Amps:</b>	@ No Load	0.57						
	@ Rated Load	1.04						
<b>Torques:</b> Oz.Ft. / Lb.In. (Circle One)	Breakdown	6.86						
	Locked Rotor	2.80						
	Pull-Up	4.00						
	Rated Load	4.25						
<b>Watts:</b>	Rated Load	109.00						
<b>Temperature Rise:</b>	@ Rated Load	N/A						
<b>Thermal Protector:</b>	Trip Temp (°C)	N/A						
<b>Winding Material:</b>	Start (Auxiliary)	Cu						
	Run (Main)	Al						

### LOW SPEED

<b>HP:</b>	1/8							
<b>Volts:</b>	115	120	208	230	277	460	100	200
<b>HZ:</b>	60	60	60	60	60	60	50	50
<b>Efficiency:</b>	@ Rated Load	53.50						
<b>Power Factor:</b>	@ Rated Load	91.20						
<b>Amps:</b>	@ No Load	0.45						
	@ Rated Load	0.86						
<b>Torques:</b> Oz.Ft. / Lb.In. (Circle One)	Breakdown	5.71						
	Locked Rotor	2.80						
	Pull-Up	4.00						
	Rated Load	3.50						
<b>Watts:</b>	Rated Load	90.00						
<b>Temperature Rise:</b>	@ Rated Load	N/A						

Notes:

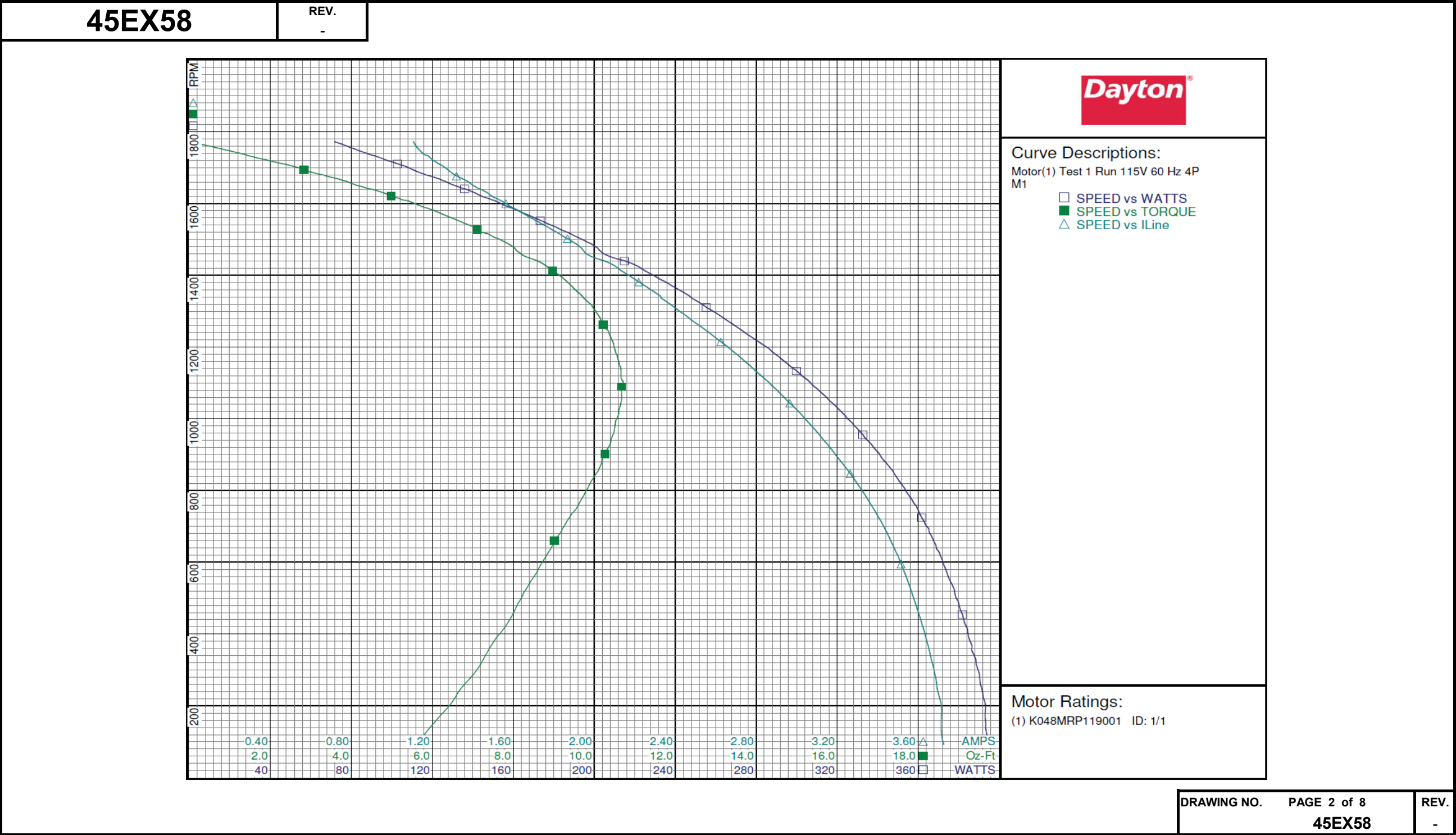
DRAWING NO. 45EX58 PAGE REV. -

# Performance Data



45EX58		REV. -								
Dayton Manufacturing Company										
Motor Description				Test Conditions						
Model: K048MRP119001		Test Type: Run		Run Cap: 0						
Motor ID: 1/1		Test Number: 1		Start Cap: 0µfd						
Poles: 4		Poles: 4		Environment: 22.1 Deg C 46 % RH 982 hPa						
Volts: 115		Volts: 115		Tested: 3/15/2016 9:15:39 AM						
Frequency: 60		Hz: 60		Tested By: Sharp, Gerald						
HP: 1/8		Rotation:		Gear Ratio: 1:1						
Speed: 1550		Special Cond:		Bearing Friction: -0.15 Oz-Ft						
Phase: 1		Speed Conn: M1		Windage Torque: -0.65 Oz-Ft						
Protector: 7AM033-A5		TestBoard: Amtps Performance		Fixture #4						
Special Points	Vline (V)	Vaux (V)	Vcap (V)	Iline (A)	Watts	RPM	Tq (Oz-ft)	HP	Eff (%)	PF (%)
	115.0	248.3	309.2	1.106	71.6	1773	0.000	0.000	0.0	56.3
	115.0	245.3	304.8	1.130	81.1	1753	0.764	0.016	14.7	62.4
	115.0	242.5	300.4	1.179	91.4	1733	1.457	0.030	24.5	67.4
	115.0	239.1	295.0	1.232	102.9	1710	2.321	0.047	34.3	72.7
	115.0	236.3	290.6	1.289	112.8	1688	2.977	0.060	39.6	76.1
	115.0	232.9	285.6	1.364	124.9	1665	3.791	0.075	44.9	79.6
	115.0	229.9	280.8	1.435	136.0	1641	4.446	0.087	47.6	82.4
	115.0	226.2	276.0	1.515	147.6	1614	5.184	0.100	50.4	84.7
	115.0	221.7	270.4	1.609	160.2	1585	5.930	0.112	52.1	86.6
	115.0	216.9	264.4	1.710	173.4	1553	6.630	0.123	52.7	88.2
1550 RPM	115.0	216.5	263.8	1.720	174.7	1550	6.697	0.124	52.8	88.3
0.125 HP	115.0	215.5	263.0	1.735	176.6	1545	6.798	0.125	52.8	88.5
	115.0	211.7	258.5	1.813	186.4	1520	7.196	0.130	52.1	89.4
	115.0	206.0	252.1	1.925	200.2	1481	7.968	0.141	52.4	90.4
	115.0	199.4	244.9	2.048	214.9	1440	8.594	0.147	51.1	91.2
	115.0	193.3	238.7	2.161	228.1	1403	9.099	0.152	49.7	91.8
	115.0	187.0	232.0	2.281	241.9	1359	9.539	0.154	47.6	92.2
	115.0	179.6	225.1	2.396	255.3	1311	9.959	0.155	45.4	92.7
	115.0	170.5	216.6	2.552	272.9	1246	10.337	0.153	41.9	93.0
	115.0	162.6	209.5	2.684	287.5	1189	10.520	0.149	38.6	93.2
	115.0	155.5	203.5	2.796	300.0	1133	10.658	0.144	35.8	93.3
BDT OZ-FT	115.0	151.4	200.2	2.859	306.3	1103	10.718	0.141	34.3	93.2
	115.0	148.0	197.9	2.907	311.3	1077	10.669	0.137	32.8	93.1
	115.0	140.2	192.2	3.018	322.7	1015	10.606	0.128	29.6	93.0
	115.0	133.2	187.4	3.111	332.7	956	10.460	0.119	26.7	93.0
	115.0	124.9	182.1	3.213	342.9	884	10.190	0.107	23.3	92.8
	115.0	116.3	177.3	3.314	353.1	807	9.843	0.095	20.0	92.7
	115.0	107.4	172.9	3.405	361.7	724	9.384	0.081	16.7	92.4
	115.0	98.5	169.4	3.482	369.1	637	8.920	0.068	13.7	92.2
	115.0	89.7	167.0	3.548	375.8	548	8.439	0.055	10.9	92.1
	115.0	81.8	166.1	3.604	381.9	454	7.980	0.043	8.4	92.1
	115.0	74.0	165.9	3.654	386.4	355	7.386	0.031	6.0	91.9
	115.0	66.7	166.1	3.693	391.3	248	6.710	0.020	3.8	92.1
	115.0	58.7	167.1	3.713	393.3	137	5.930	0.010	1.8	92.1

Performance Data





# Performance Data



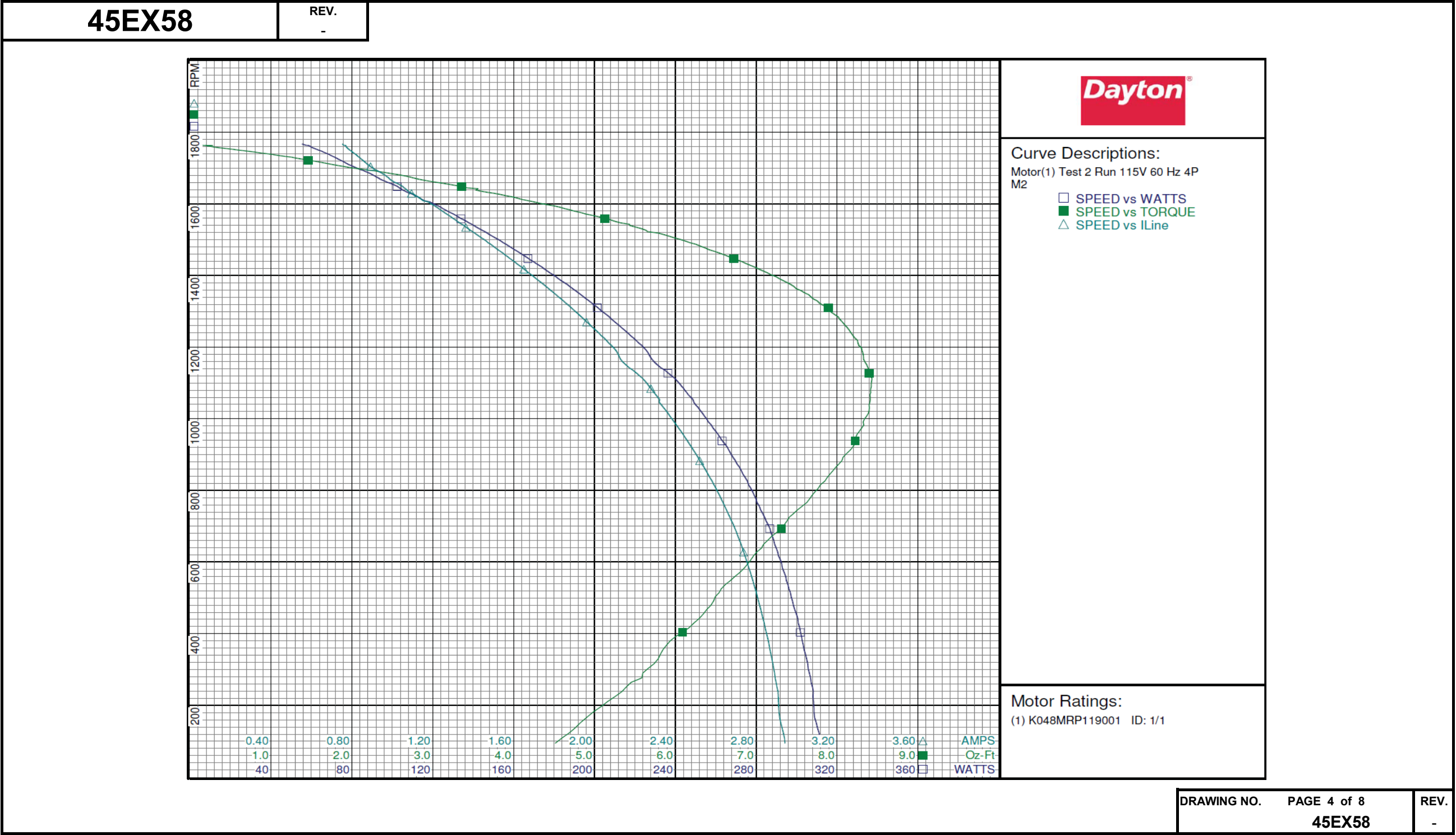
45EX58		REV. -								
Dayton Manufacturing Company										
Motor Description					Test Conditions					
Model: K048MRP119001		Test Type: Run		Run Cap: 0						
Motor ID: 1/1		Test Number: 2		Start Cap: 0µfd						
Poles: 4		Poles: 4		Environment: 22.1 Deg C 46 % RH 982 hPa						
Volts: 115		Volts: 115		Tested: 3/15/2016 9:17:06 AM						
Frequency: 60		Hz: 60		Tested By: Sharp, Gerald						
HP: 1/8		Rotation:		Gear Ratio: 1:1						
Speed: 1550		Special Cond:		Bearing Friction: -0.19 Oz-Ft						
Phase: 1		Speed Conn: M2		Windage Torque: -0.64 Oz-Ft						
Protector: 7AM033-A5		TestBoard: Amtps Performance		Fixture #4						
Special Points	Vline (V)	Vaux (V)	Vcap (V)	Iline (A)	Watts	RPM	Tq (Oz-ft)	HP	Eff (%)	PF (%)
	115.0	227.9	280.1	0.752	55.4	1767	0.000	0.000	0.0	64.1
	115.0	226.3	278.0	0.771	59.3	1761	0.248	0.005	6.5	66.8
	115.0	223.5	274.1	0.803	66.0	1744	0.807	0.017	18.9	71.4
	115.0	220.4	269.6	0.847	73.4	1724	1.399	0.029	29.2	75.3
	115.0	217.5	264.7	0.900	81.9	1701	1.979	0.040	36.5	79.2
	115.0	214.1	259.9	0.968	91.1	1678	2.645	0.053	43.3	81.9
	115.0	211.0	255.3	1.032	100.3	1654	3.206	0.063	47.0	84.5
	115.0	207.7	250.8	1.095	108.7	1629	3.751	0.073	49.9	86.3
	115.0	203.4	245.8	1.186	119.8	1602	4.315	0.082	51.2	87.8
	115.0	199.0	240.5	1.269	130.2	1572	4.892	0.092	52.4	89.2
1550 RPM	115.0	195.8	236.8	1.324	137.0	1550	5.272	0.097	53.0	89.9
	115.0	193.9	235.0	1.354	140.4	1539	5.440	0.100	53.0	90.1
	115.0	188.9	229.4	1.440	150.9	1505	5.988	0.107	53.1	91.1
	115.0	183.4	223.5	1.533	161.8	1467	6.482	0.113	52.2	91.8
	115.0	177.8	217.7	1.626	172.5	1428	6.925	0.118	50.9	92.3
	115.0	171.7	211.7	1.724	183.6	1385	7.336	0.121	49.2	92.6
	115.0	165.6	205.8	1.822	194.6	1340	7.678	0.123	47.0	92.9
	115.0	159.1	199.8	1.921	205.6	1292	7.963	0.122	44.4	93.1
	115.0	151.5	193.1	2.033	217.8	1232	8.195	0.120	41.2	93.2
	115.0	145.1	188.1	2.121	227.3	1175	8.326	0.116	38.2	93.2
BDT OZ-FT	115.0	136.9	181.3	2.238	239.8	1112	8.432	0.112	34.7	93.2
	115.0	136.9	181.3	2.238	239.8	1112	8.432	0.112	34.7	93.2
	115.0	131.0	177.3	2.312	247.5	1061	8.408	0.106	32.0	93.1
	115.0	124.3	172.6	2.384	255.5	999	8.338	0.099	29.0	93.2
	115.0	117.0	167.9	2.469	264.4	930	8.219	0.091	25.7	93.1
	115.0	109.2	163.4	2.551	272.6	855	7.951	0.081	22.1	92.9
	115.0	101.4	159.2	2.627	279.8	776	7.660	0.071	18.9	92.6
	115.0	93.7	155.7	2.694	286.7	694	7.316	0.060	15.7	92.5
	115.0	85.8	152.9	2.751	291.9	606	6.934	0.050	12.8	92.3
	115.0	78.3	151.6	2.800	296.9	514	6.541	0.040	10.1	92.2
	115.0	71.3	151.1	2.844	301.5	416	6.170	0.031	7.6	92.2
	115.0	64.8	151.3	2.882	305.5	316	5.737	0.022	5.3	92.2
	115.0	58.0	151.5	2.910	308.3	211	5.164	0.013	3.1	92.1
	115.0	51.0	152.4	2.942	311.6	94	4.514	0.005	1.2	92.1

DRAWING NO. PAGE 3 of 8

45EX58

REV.  
-

Performance Data



Dayton Electric Mfg. Co. Lake Forest, IL 60045 USA

# Performance Data



45EX58		REV. -								
Dayton Manufacturing Company										
Motor Description				Test Conditions						
Model:		K048MRP119001		Test Type:		Run		Run Cap:		0
Motor ID:		1/1		Test Number:		3		Start Cap:		0µfd
Poles:		4		Poles:		4		Environment:		22.1 Deg C 46 % RH 982 hPa
Volts:		115		Volts:		115		Tested:		3/15/2016 9:18:36 AM
Frequency:		60		Hz:		60		Tested By:		Sharp, Gerald
HP:		1/8		Rotation:				Gear Ratio:		1:1
Speed:		1550		Special Cond:				Bearing Friction:		-0.22 Oz-Ft
Phase:		1		Speed Conn:		M3		Windage Torque:		-0.65 Oz-Ft
Protector:		7AM033-A5		TestBoard:		Amps Performance		Fixture #4		
Special Points		Vline(V)	Vaux(V)	Vcap(V)	Iline(A)	Watts	RPM	Tq(Oz-ft)	HP	Eff (%)
		115.0	209.5	255.6	0.570	45.7	1766	0.000	0.000	0.0
		115.0	206.3	251.3	0.603	51.8	1746	0.499	0.010	14.9
		115.0	203.0	246.5	0.645	58.4	1726	1.002	0.021	26.3
		115.0	199.4	241.2	0.701	65.7	1702	1.561	0.032	35.9
		115.0	196.6	236.6	0.756	73.2	1679	2.062	0.041	42.0
		115.0	193.4	232.7	0.808	79.8	1656	2.497	0.049	46.0
		115.0	189.9	228.2	0.868	87.2	1631	2.968	0.058	49.3
		115.0	186.0	223.7	0.929	94.9	1603	3.444	0.066	51.7
		115.0	181.8	218.8	0.994	102.8	1574	3.907	0.073	53.1
1550 RPM		115.0	178.4	215.2	1.044	109.0	1550	4.250	0.078	53.7
		115.0	176.8	213.5	1.068	111.8	1538	4.396	0.081	53.7
		115.0	171.0	207.2	1.156	122.0	1498	4.895	0.087	53.4
		115.0	167.3	203.4	1.228	130.2	1470	5.203	0.091	52.2
		115.0	162.7	199.0	1.293	137.8	1432	5.520	0.094	51.0
		115.0	156.7	193.0	1.381	147.5	1390	5.899	0.098	49.4
		115.0	151.1	187.9	1.459	156.2	1345	6.218	0.100	47.6
		115.0	144.7	182.1	1.548	166.0	1292	6.447	0.099	44.6
		115.0	137.5	176.2	1.641	175.9	1232	6.655	0.098	41.4
		115.0	131.6	171.3	1.719	184.4	1179	6.777	0.095	38.5
		115.0	124.9	166.2	1.800	193.1	1115	6.832	0.091	35.0
BDT OZ-FT		115.0	122.3	164.3	1.831	196.3	1091	6.863	0.089	33.9
		115.0	118.9	161.9	1.872	200.6	1058	6.828	0.086	32.0
		115.0	113.1	158.0	1.937	207.3	999	6.793	0.081	29.1
		115.0	107.1	154.4	1.999	213.6	938	6.669	0.074	26.0
		115.0	100.5	150.6	2.065	220.4	866	6.519	0.067	22.7
		115.0	93.2	146.9	2.127	226.2	788	6.287	0.059	19.5
		115.0	86.3	143.7	2.183	231.6	705	6.004	0.050	16.2
		115.0	79.1	141.2	2.231	236.2	619	5.696	0.042	13.2
		115.0	72.4	139.8	2.272	240.1	527	5.369	0.034	10.5
		115.0	66.2	139.6	2.310	244.2	429	5.110	0.026	8.0
		115.0	60.3	139.5	2.329	246.7	330	4.769	0.019	5.7
		115.0	54.4	139.7	2.355	249.6	225	4.342	0.012	3.5
		115.0	47.7	140.0	2.377	251.7	111	3.755	0.005	1.5
								DRAWING NO.	PAGE 5 of 8	
								45EX58	REV. -	

Dayton Electric Mfg. Co. Lake Forest, IL 60045 USA



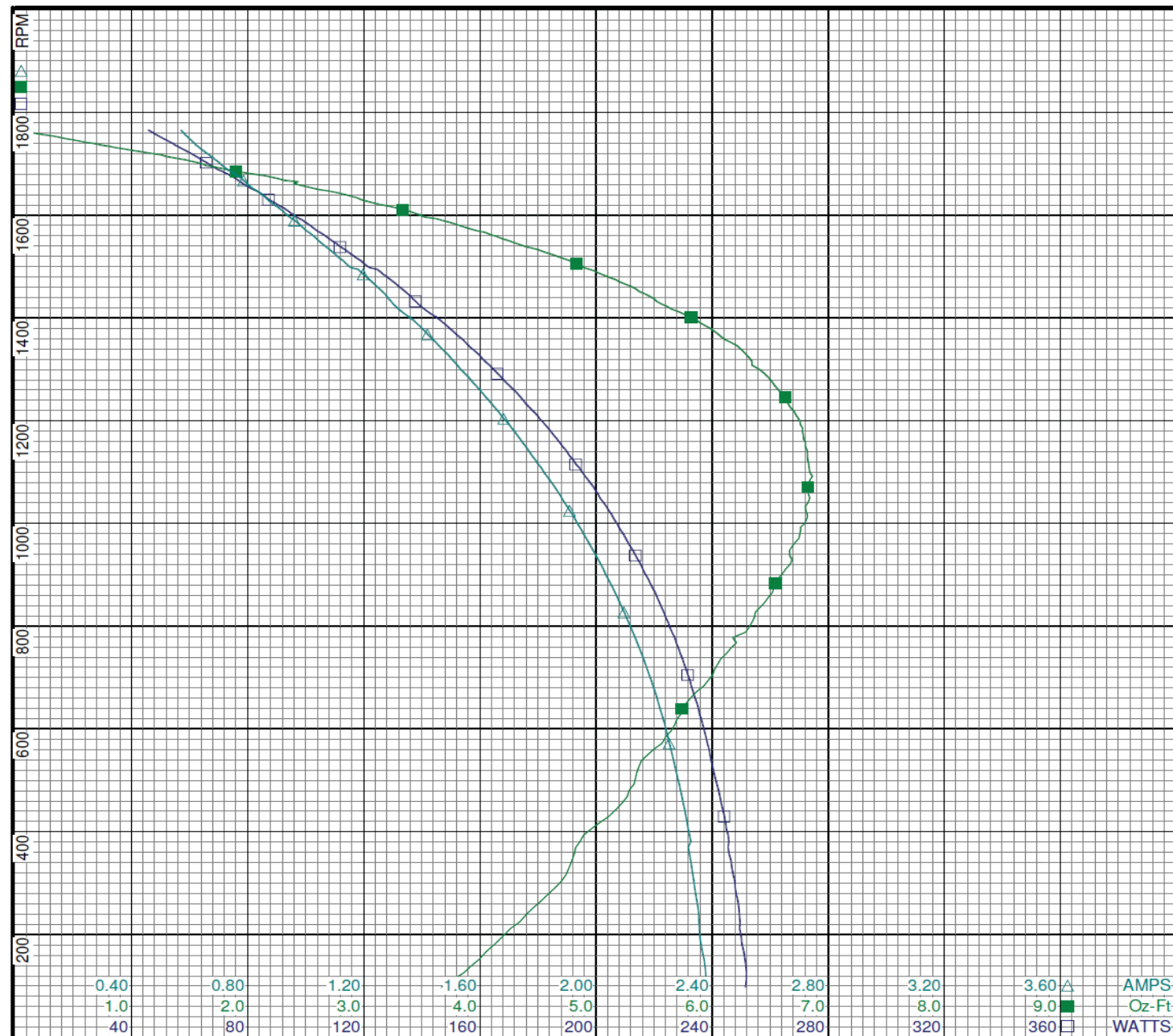
## Performance Data



**45EX58**

REV.

—



### Curve Descriptions:

Motor(1) Test 3 Run 115V 60 Hz 4P  
M3

- SPEED vs WATTS
- SPEED vs TORQUE
- △ SPEED vs ILine

Motor Ratings:

(1) K048MRP119001 ID: 1/1

DRAWING NO.

**PAGE 6 of 8**

**45EX58**

REV.

—

**Dayton Electric Mfg. Co. Lake Forest, IL 60045 USA**

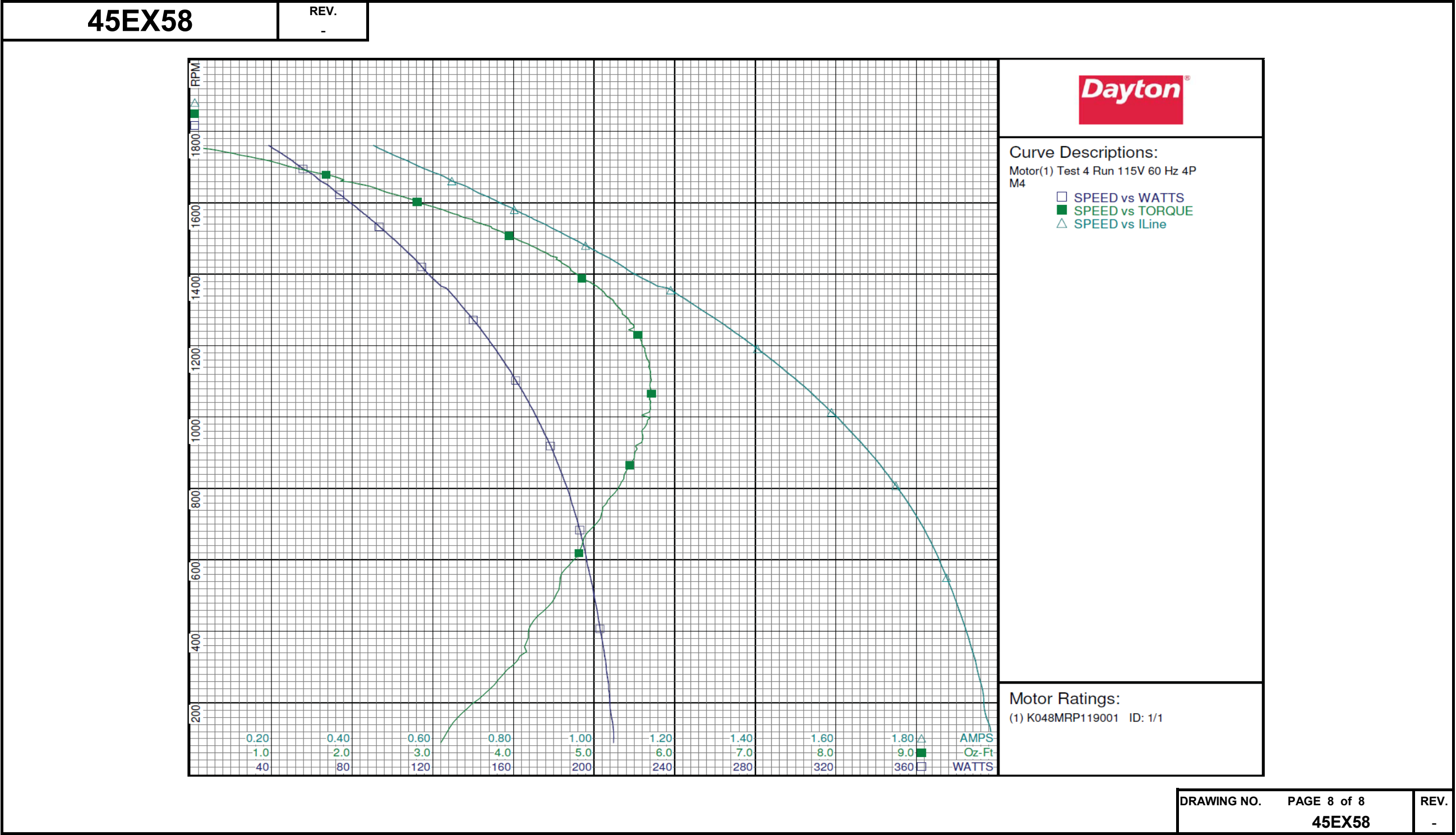
# Performance Data



45EX58		REV. -								
Dayton Manufacturing Company										
Motor Description					Test Conditions					
Model:	K048MRP119001				Test Type:	Run		Run Cap:	0	
Motor ID:	1/1				Test Number:	4		Start Cap:	0µfd	
Poles:	4				Poles:	4		Environment:	22.1 Deg C 46 % RH 982 hPa	
Volts:	115				Volts:	115		Tested:	3/15/2016 9:20:00 AM	
Frequency:	60				Hz:	60		Tested By:	Sharp, Gerald	
HP:	1/8				Rotation:			Gear Ratio:	1:1	
Speed:	1550				Special Cond:			Bearing Friction:	-0.20 Oz-Ft	
Phase:	1				Speed Conn:	M4		Windage Torque:	-0.62 Oz-Ft	
Protector:	7AM033-A5				TestBoard:	Amps Performance Fixture #4				
Special Points	Vline(V)	Vaux(V)	Vcap(V)	Iline(A)	Watts	RPM	Tq(Oz-ft)	HP	Eff(%)	PF(%)
	115.0	193.3	234.9	0.453	38.5	1761	0.000	0.000	0.0	74.0
	115.0	189.8	230.2	0.489	44.2	1740	0.466	0.010	16.3	78.5
	115.0	186.1	225.0	0.533	49.9	1719	0.935	0.019	28.6	81.3
	115.0	183.3	220.3	0.578	55.7	1695	1.329	0.027	35.9	83.7
	115.0	180.2	216.0	0.628	61.8	1673	1.779	0.035	42.8	85.5
	115.0	177.1	212.0	0.675	67.9	1649	2.158	0.042	46.6	87.4
	115.0	173.8	208.1	0.723	73.8	1623	2.533	0.049	49.5	88.8
	115.0	170.2	203.8	0.775	80.2	1595	2.906	0.055	51.3	90.0
	115.0	166.1	199.5	0.830	86.7	1566	3.311	0.062	53.1	90.8
1550 RPM	115.0	164.0	197.3	0.858	90.0	1550	3.501	0.065	53.5	91.2
	115.0	161.8	195.0	0.888	93.5	1533	3.722	0.068	54.2	91.5
	115.0	157.2	190.4	0.949	100.5	1498	4.034	0.072	53.4	92.1
	115.0	152.6	185.6	1.011	107.7	1460	4.405	0.077	53.0	92.6
	115.0	147.6	181.0	1.072	114.6	1421	4.682	0.079	51.6	92.9
	115.0	142.5	176.1	1.139	122.0	1378	4.948	0.081	49.6	93.1
	115.0	137.3	171.4	1.223	131.2	1333	5.200	0.083	46.9	93.3
	115.0	130.7	165.7	1.305	140.1	1272	5.434	0.082	43.8	93.4
	115.0	124.9	161.0	1.375	147.7	1217	5.577	0.081	40.8	93.4
	115.0	119.5	156.9	1.436	154.2	1164	5.655	0.078	37.9	93.4
BDT OZ-FT	115.0	113.5	152.6	1.503	161.2	1103	5.710	0.075	34.7	93.2
	115.0	113.5	152.6	1.503	161.2	1103	5.710	0.075	34.7	93.2
	115.0	108.8	149.4	1.553	166.5	1052	5.686	0.071	31.9	93.2
	115.0	102.5	145.4	1.616	172.8	984	5.659	0.066	28.6	93.0
	115.0	97.2	142.2	1.669	178.4	919	5.512	0.060	25.2	93.0
	115.0	90.8	138.7	1.723	183.6	846	5.391	0.054	22.1	92.7
	115.0	84.3	135.7	1.774	188.6	767	5.170	0.047	18.7	92.4
	115.0	77.9	132.7	1.820	193.0	684	4.949	0.040	15.6	92.2
	115.0	71.4	130.8	1.857	196.4	596	4.733	0.034	12.8	92.0
	115.0	65.5	129.9	1.891	199.9	504	4.531	0.027	10.2	91.9
	115.0	59.9	129.7	1.922	203.0	407	4.193	0.020	7.5	91.8
	115.0	54.7	129.8	1.948	206.0	305	3.994	0.015	5.3	91.9
	115.0	49.0	130.1	1.967	207.8	197	3.485	0.008	2.9	91.9
	115.0	43.2	130.4	1.985	209.6	88	3.099	0.003	1.2	91.8
					DRAWING NO. PAGE 7 of 8					
					45EX58					
					REV. -					

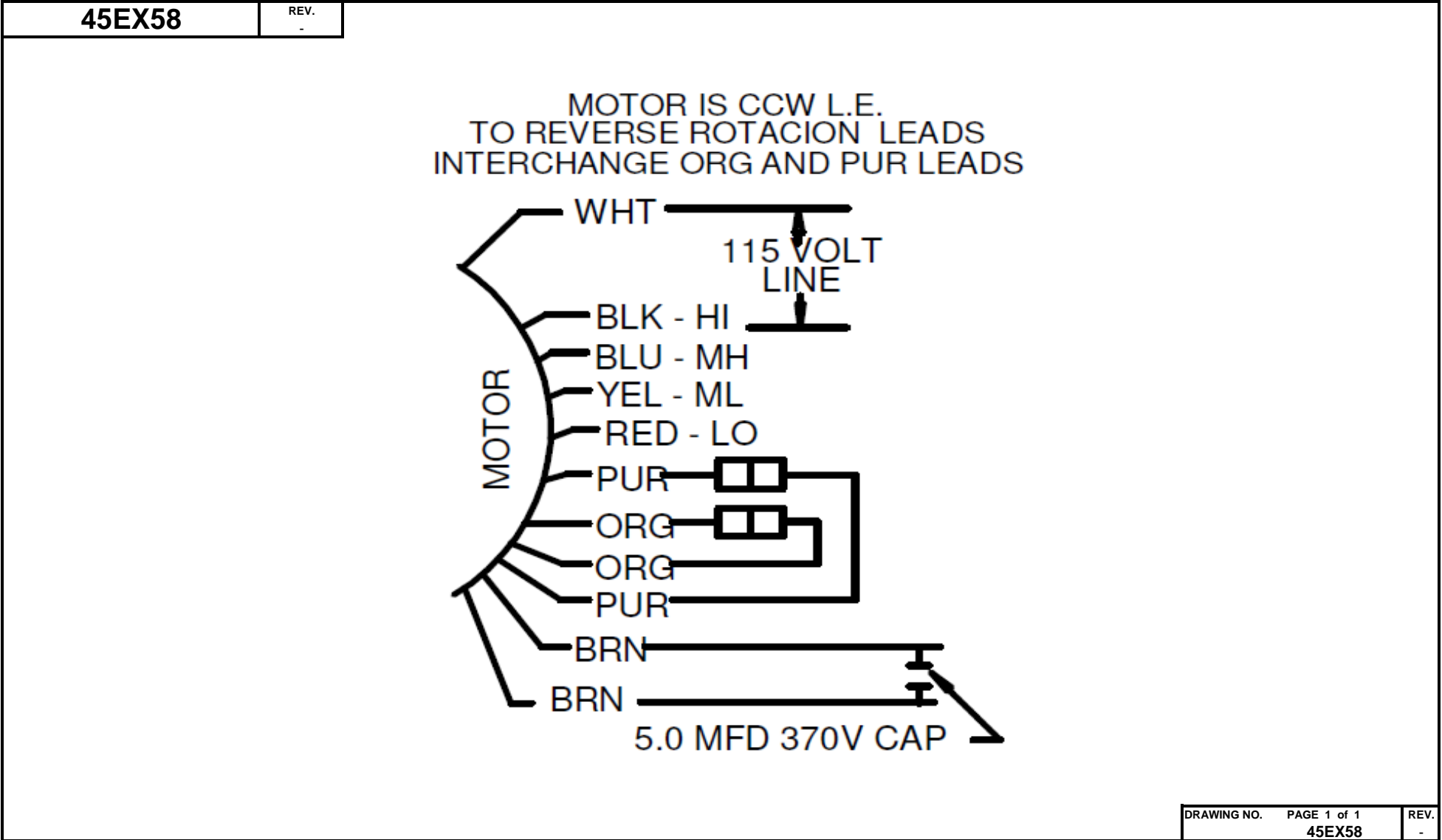
Dayton Electric Mfg. Co. Lake Forest, IL 60045 USA

Performance Data



Dayton Electric Mfg. Co. Lake Forest, IL 60045 USA

Wiring Diagram



Dayton Electric Mfg. Co. Lake Forest, IL 60045 USA

# Dayton®

®

## ROOM AIR CONDITIONER MOTOR

Part No  
45EX58



**HP:** 1/8

**VOLTS:** 115


**AMPS:** 1.9

**RPM:** 1550 / 4SPD

**DUTY:** CONT

**ENCL:** OAO

**THERMALLY PROTECTED:** AUTO

MFG. NO.  PROT. CODE : 7A000 AVG.F.L

MTR REF: K48HXMRP-1190

**PH:** 1

**HZ:** 60

**FR:** 42Y

**INS CL:** B

**AMB:** 40 °C

**Disconnect Power Before Making Any  
Electrical Connections or Changes**

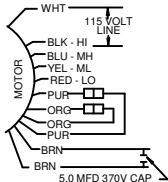


E37403



258501

MOTOR IS CCW L.E.  
TO REVERSE ROTATION LEADS  
INTERCHANGE ORG AND PUR LEADS



Mfd for Dayton Electric Mfg. Co., Lake Forest, IL 60045 USA

MADE IN MEXICO