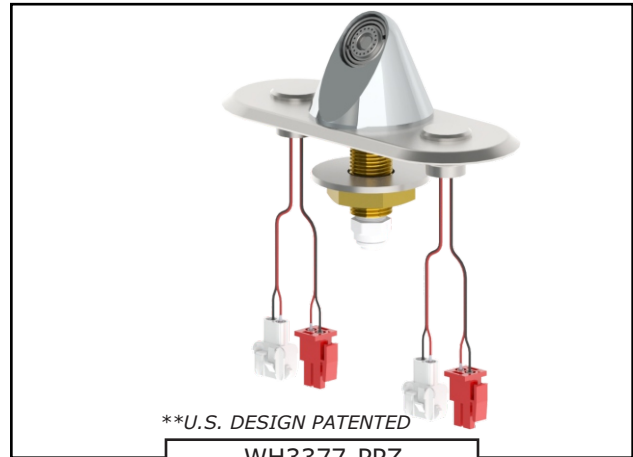




## Whitehall Ligature Resistant Faucet with Piezo Buttons and Valve

Model WH3376-PPZ  
 & WH3377-PPZ



\*\*U.S. DESIGN PATENTED

WH3377-PPZ

Fixture May Show Some Available Options

### Ligature Resistant Faucet

**The Ligature Resistant Faucet** is designed and developed to retrofit existing lavatories or it can be specified for new design. The Ligature Resistant Faucet is arranged to be mounted to the deck of the lavatory. Faucet assembly requires (3) 1-5/16" to 1-1/2" diameter holes on 4" or optional 8" centerset. Conical faucet is 303 stainless steel and provides vandal and suicide resistance. Includes a 0.35 GPM vandal resistant flow nozzle.

**Valve** is a Electronic valve with Piezo button(s) which require less than 5 pounds of force to activate valve. Valve is metering with non-hold open feature. Metering valve factory set for 8 second run time and has a timing range of 0-100 seconds. Valve can be remotely located up to 10 feet from the operating pushbutton. 120VAC/9VDC plug-in transformer is provided.

**Fixture is ADA Compliant.** Unit conforms with ADA requirements for accessibility when installed correctly. Compliance is subject to the interpretation and requirements of the local code authority.

**Optional WHST70-12 Mixing Valve** option delivers tempered water flow by compensating for pressure and temperature fluctuations. Valve is to be field set to 105 Fahrenheit and includes strainers and integral checks. Operating range is 30 to 100 PSI.

### GUIDE SPECIFICATION

Provide and install Ligature Resistant Faucet Assembly (specify model number and options). Faucet valve shall be electronic, metering, non-hold open type. Assembly shall include 0.35 GPM vandal resistant flow control nozzle, hot and cold Piezo button and faucet connections.

Please visit [www.whitehallmfg.com](http://www.whitehallmfg.com) for most current specifications.



Complies with the following standards:





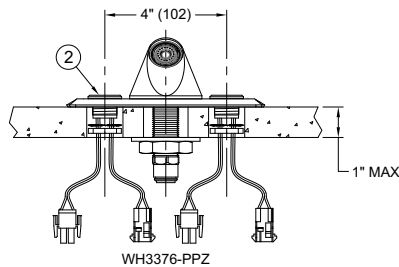
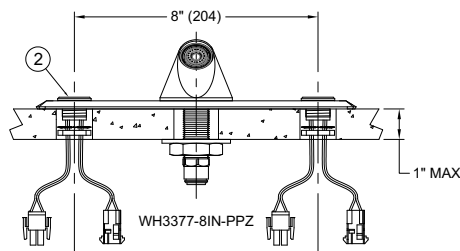
**MODEL NUMBER AND OPTIONS SELECTION:**

**BASE MODEL NUMBER**

- WH3376-PPZ      Ligature Resistant Faucet with Electronic Valve and Piezo Pushbutton, Single Temp. with 4" Centerset
- WH3376-PPZ-BAT      Ligature Resistant Faucet with Battery Operated Electronic Valve and Piezo Pushbutton, Single Temp. with 4" Centerset
- WH3377-PPZ      Ligature Resistant Faucet with Electronic Valve and Piezo Pushbuttons, Hot & Cold with 4" Centerset
- WH3377-PPZ-BAT      Ligature Resistant Faucet with Battery Operated Valve and Piezo Pushbutton, Hot & Cold with 4" Centerset
- WH3376-8IN-PPZ      Ligature Resistant Faucet with Electronic Valve and Piezo Pushbutton, Single Temp. with 8" Centerset
- WH3376-8IN-PPZ-BAT      Ligature Resistant Faucet with Battery Operated Valve and Piezo Pushbutton, Single Temp. with 8" Centerset
- WH3377-8IN-PPZ      Ligature Resistant Faucet with Electronic Valve and Piezo Pushbuttons, Hot & Cold with 8" Centerset
- WH3377-8IN-PPZ-BAT      Ligature Resistant Faucet with Battery Operated Valve and Piezo Pushbutton, Hot & Cold with 8" Centerset

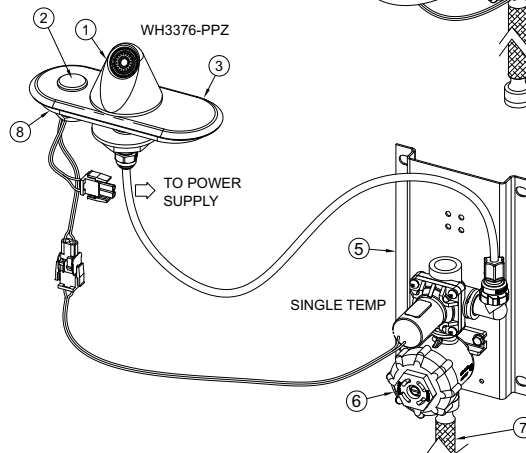
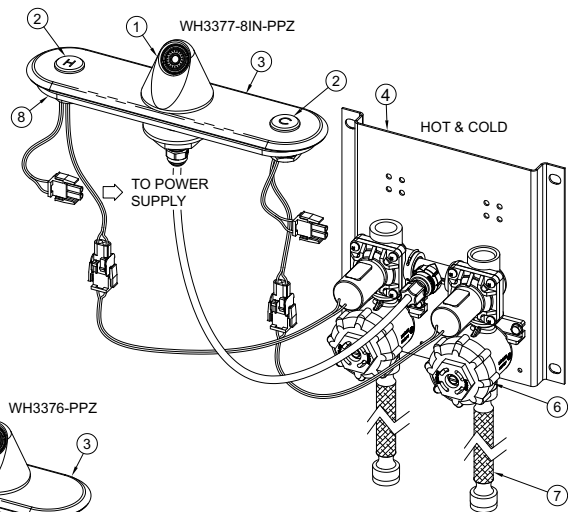
**OPTIONS:**

- WHST70-12      ASSE 1070 Compliant Hot & Cold, Temperature / Pressure Balancing Mixing Valve



**NOTES:**

1. CONICAL LIGATURE RESISTANT SPOUT WITH A 0.35 GPM VANDEL RESISTANT NOZZLE
2. LIGATURE RESISTANT PIEZO PUSHBUTTONS
3. ESCUTCHEON PLATE
4. AIR-CONTROL VALVE ASSEMBLY, HOT AND COLD
5. AIR-CONTROL VALVE ASSEMBLY, SINGLE TEMPERATURE
6. CHECKSTOP/STRAINER ASSEMBLY
7. 1/2" NPS INLET FLEX HOSE
8. GASKET



**DISCLAIMER:**

This product is designed to decrease the probability that it may be utilized as an apparatus for ligature. It is not a replacement for professionals who are trained in the proper evaluation, management and supervision of persons at risk of suicide.

**SELECTION SUMMARY & APPROVAL FOR MANUFACTURING**

Model Number & Options \_\_\_\_\_ Quantity \_\_\_\_\_  
 Company \_\_\_\_\_ Date \_\_\_\_\_  
 Contact \_\_\_\_\_ Title \_\_\_\_\_  
 Approval for Manufacturing/Signature \_\_\_\_\_

All dimensions are nominal and subject to manufacturer's change without notice. Whitehall assumes no responsibility for use of void or superseded data. Whitehall Manufacturing®, Member of Morris Group International. Please visit [www.whitehallmfg.com](http://www.whitehallmfg.com) for most current specifications.