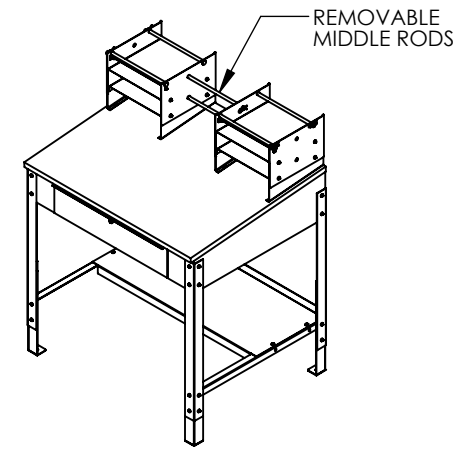
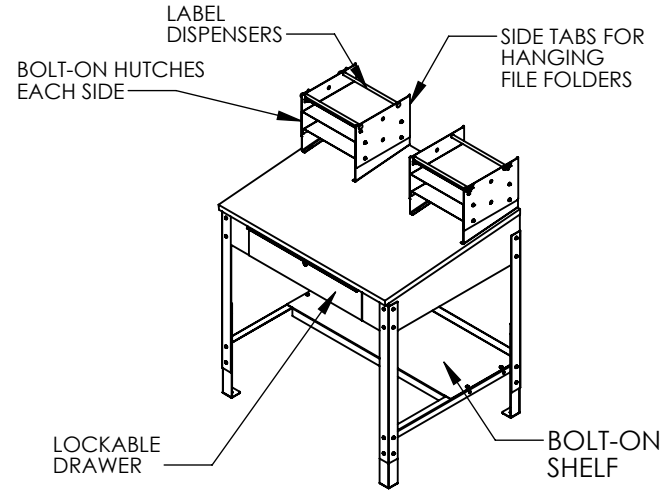
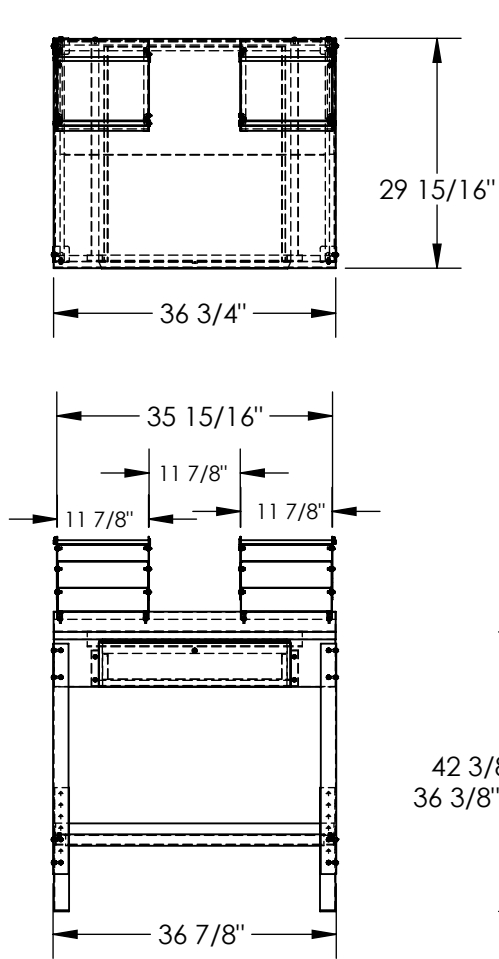


OPEN SHOP DESK - SHOP-DO

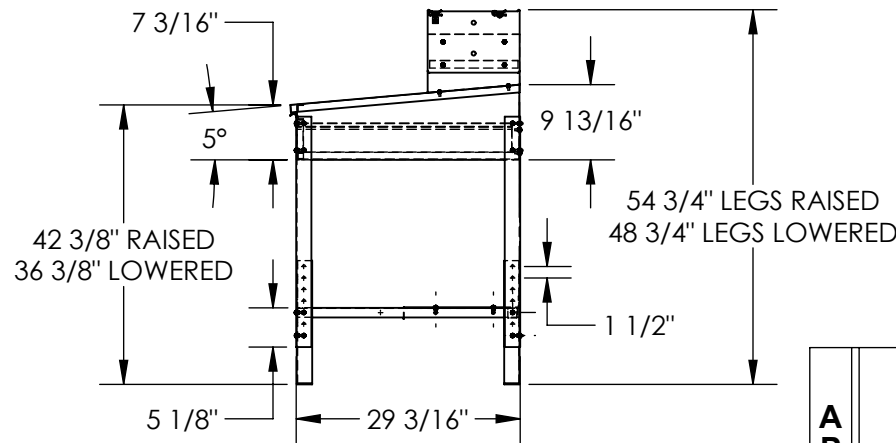
APPROX WEIGHT: 109.35 lbs.
DOES NOT INCLUDE WEIGHT OF POWER OR PACKAGING!!!

*** ANY ADDITIONS, DELETIONS, OR OMISSIONS MUST BE CORRECTED ON THIS DRAWING AS THIS DRAWING WILL BE CONSIDERED ALL INCLUSIVE ***

ALL GRAPHICS PROVIDED ARE FOR REFERENCE ONLY. IF CERTAIN DIMENSIONS ARE CRITICAL PLEASE VERIFY THOSE DIMENSIONS WITH YOUR SALESPERSON



3D VIEWS
SCALE 1:30



NOTE - MATERIAL - LEGS: 14 GAGE
- ALL OTHERS: 20 GAGE

DIMENSION TOLERANCE $\pm 1/4"$

I, THE UNDERSIGNED, AGREE THAT THE PRODUCT AS REPRESENTED SATISFIES DESIGN AND DIMENSION REQUIREMENTS. I ALSO ACKNOWLEDGE MY DUTY TO CONFIRM PRODUCT AND INSTALLATION COMPLIANCE WITH ALL APPLICABLE FEDERAL, STATE AND LOCAL REGULATIONS AND STANDARDS.

ANY MODIFIED UNITS ARE NON-RETURNABLE

As drawn As marked

Signed: _____ Date: _____

Printed Name: _____

LEAD TIME WILL START UPON RECEIPT OF SIGNED APPROVAL DRAWING

APPROVAL

DISTRIBUTOR'S NAME: _____ P.O.# X

VESTIL MANUFACTURING

W.O.# X

DRAWN BY: TJM

DATE: 02/13/12

SALES: X

REFERENCE: X

SCALE: 1:25

FILE NAME:

QUOTED LEAD TIME: X

QUOTE # X

30-007-234

FOR INTERNAL USE ONLY
PROJECT SIGN OFF

SALES	
ENG.	
FAB.	
POWER	

SPECIAL FEATURES

NONE

STANDARD FEATURES

- MODEL NUMBER IS SHOP-DO
- OVERALL WIDTH IS: 36 7/8"
- OVERALL DEPTH IS: 29 15/16"
- OVERALL RAISED HEIGHT IS: 54 3/4"
- OVERALL LOWERED HEIGHT IS: 48 3/4"
- ADJUSTABLE LEGS IN 1 1/2" INCREMENTS
- SLOPED TOP FOR ERGONOMIC COMFORT
- 24"W x 16"D x 3 1/2"H LOCKABLE DRAWER
- REMOVABLE RODS FOR TOP MIDDLE SECTION
- MIDDLE SECTION TABS CAN BE USED FOR HANGING FILE FOLDERS
- TOP END SECTIONS FEATURE LABEL DISPENSERS
- BOLT-ON TOP HUTCHES AND BOLT-ON LOWER SHELF
- TOUGH BAKED IN POWDER COATED GREY FINISH