



10192 10193

Two Handle Lavatory Faucet

FEATURES:

- *Metal Lever Handle*
- *Ceramic Cartridge*
- *100% Factory Pressure Tested*



APPLICABLE STANDARDS/CODES:

Specified model meets or exceeds the following:

- *ANSI/ASME A112.18.1*
- *ANSI/NSF 61 – Sec. 9*
- *cUPC*
- *ADA*



AVAILABLE FINISHES:

CP = Polished Chrome Finish
NP = Brushed Nickel Finish

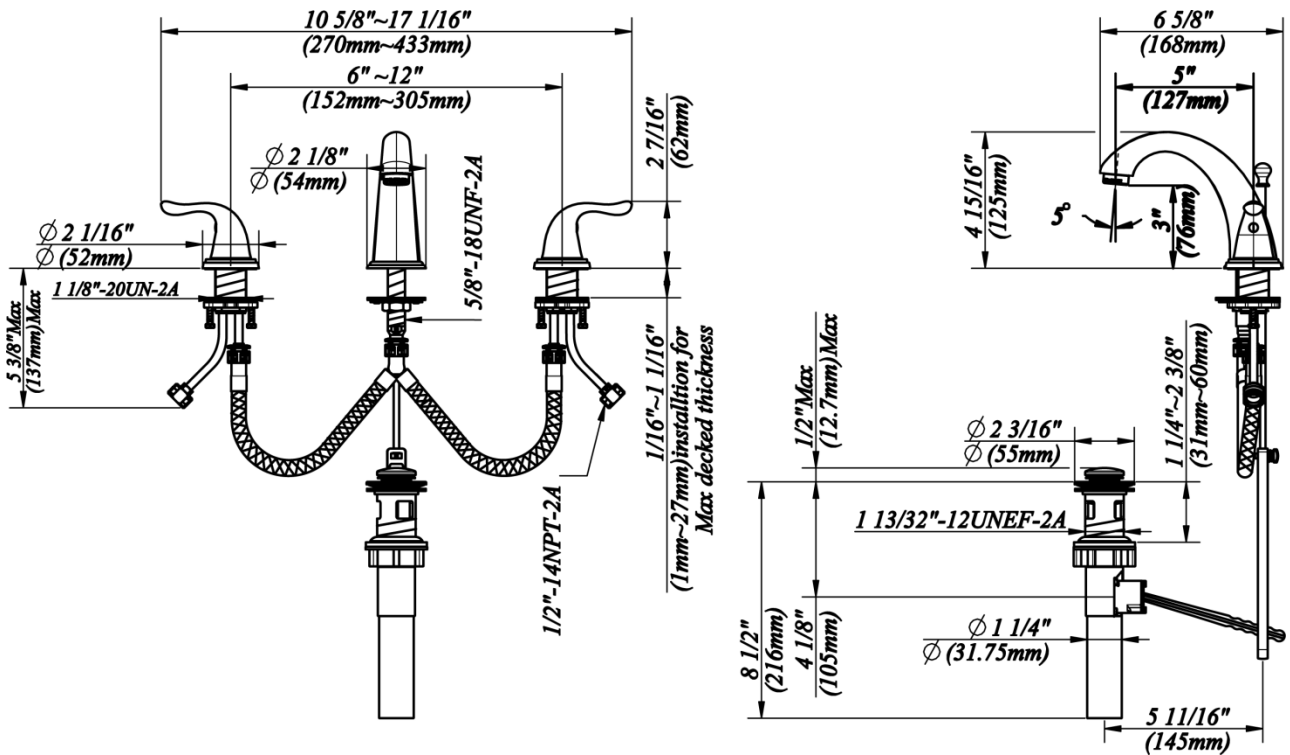
SPECIFIED MODEL:

Model	Description	Finish
10192	Two handle lavatory faucet	CP
10192	Two handle lavatory faucet	NP

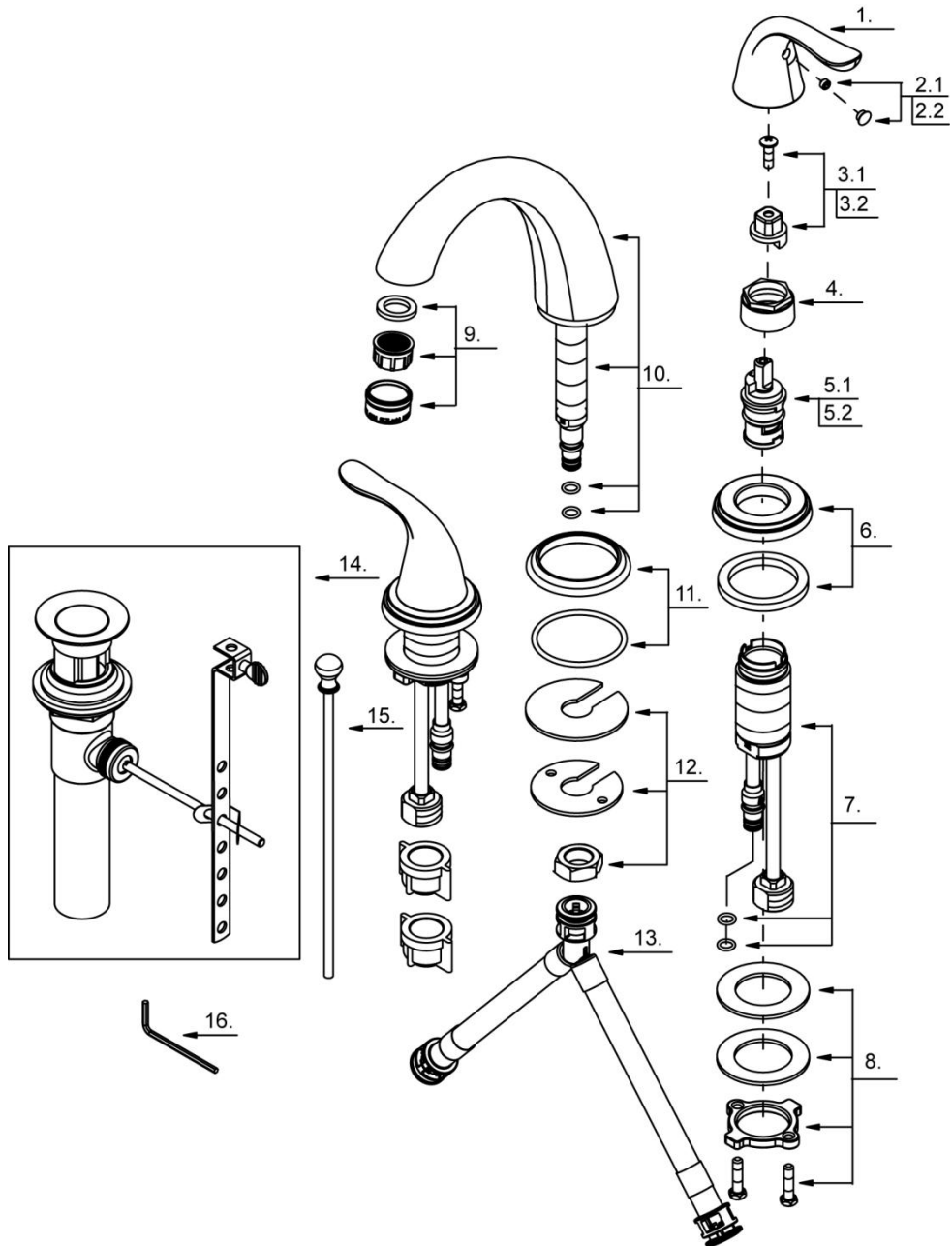


10192 10193

PRODUCT SPECIFICATION DIAGRAM



EXPLODED DRAWING





10192 10193

PARTS LISTING

No.	Part Name	Part No.
1	Metal Handle	A069115
2.1	Index Button-Cold	A603844C
2.2	Index Button-Hot	A603844H
3.1	Handle Adaptor-Cold	A66D574C
3.2	Handle Adaptor-Hot	A66D574H
4	Retainer Nut	A016003
5.1	Ceramic Disc Cartridge-Cold	A507104N
5.2	Ceramic Disc Cartridge - Hot	A507103N
6	Handle Trim Ring	A667826
7	Handle Valve Body	A661002W
8	Mounting Hardware Assembly	A663951
9	Aerator	A500872N-51
10	Spout Assembly	A666779W
11	Spout Trim Ring	A667565
12	Mounting Hardware	A603233
13	Supply Hose	A135141N
14	Pop-up Assembly	A025463
15	Lift Rod	A025463
16	Hex Wrench (H2.5 * L * L)	A031000NI