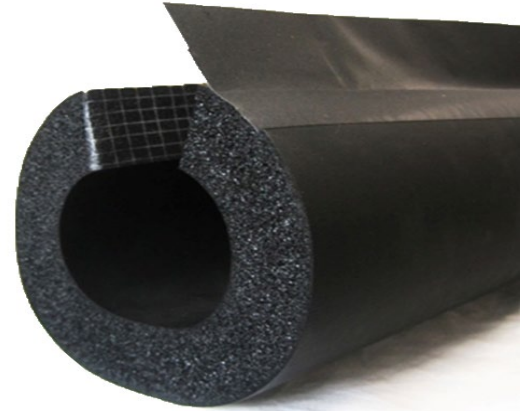


INSUL-LOCK® DS Flexible Closed Cell Pipe Insulation

Product Highlights

- ✓ Easy-to-install with precise fit
- ✓ Double-seal technology
 - Built-in pressure sensitive adhesive
 - Built-in PVC overlap tape with acrylic adhesive
- ✓ Scrim reinforcement on the seam surface
- ✓ Environmentally-friendly, CFC-free, flexible elastomeric thermal insulation
- ✓ Non-porous, fiber-free, and resistant to mold growth
- ✓ Resistant to moisture vapor flow
- ✓ Compatible with heating cable and tapes



Specifications:

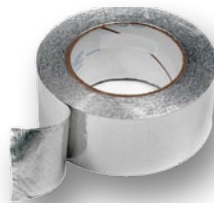
- Operating temperature range: -70°F (-57°C) to 220°F (104°C)
- R-value: 3
- Color: Black
- Length: 6.0' (1.8m)
- Thickness: 0.5" (1.3cm)
- Density: 3 to 6 PCF
- Water vapor permeability:
 - Dry cup (Elastomeric insulation): 0.03 perm - in
 - Wet cup (Glued seam with overlap): 0.12 perm - in
- Water absorption % (Volume change): 0

Applications:

- Freeze protection
- Prevent condensation on refrigerant lines, cold water plumbing, roof drains, and chilled water systems
- Many other outdoor and indoor applications

Ordering Information:

| Part Number | Pipe Diameter |
|-------------|---------------|
| INSUL78 | 1/2" |
| INSUL118 | 3/4" |
| INSUL138 | 1" |
| INSUL158 | 1-1/4" |
| INSUL2 | 1-1/2" |
| INSUL2 | 1-3/4" |
| INSUL238 | 2" |
| INSUL258 | 2-1/4" |
| INSUL278 | 2-1/2" |
| INSUL318 | 2-3/4" |
| INSUL312 | 3" |



Recommended Accessories:

Adhesive aluminum tape

For extra environmental protection.

| Part # | Width | Length |
|-----------|-----------|------------|
| INSFOIL-3 | 3" (76mm) | 150' (46m) |



DUCK® Duckling Duct Tape

Seal spaces between multiple pieces of insulation and prevent heat loss.

| Part # | Width | Length |
|--------|--------------|-------------|
| 282309 | 0.75" (19mm) | 180" (4.5m) |