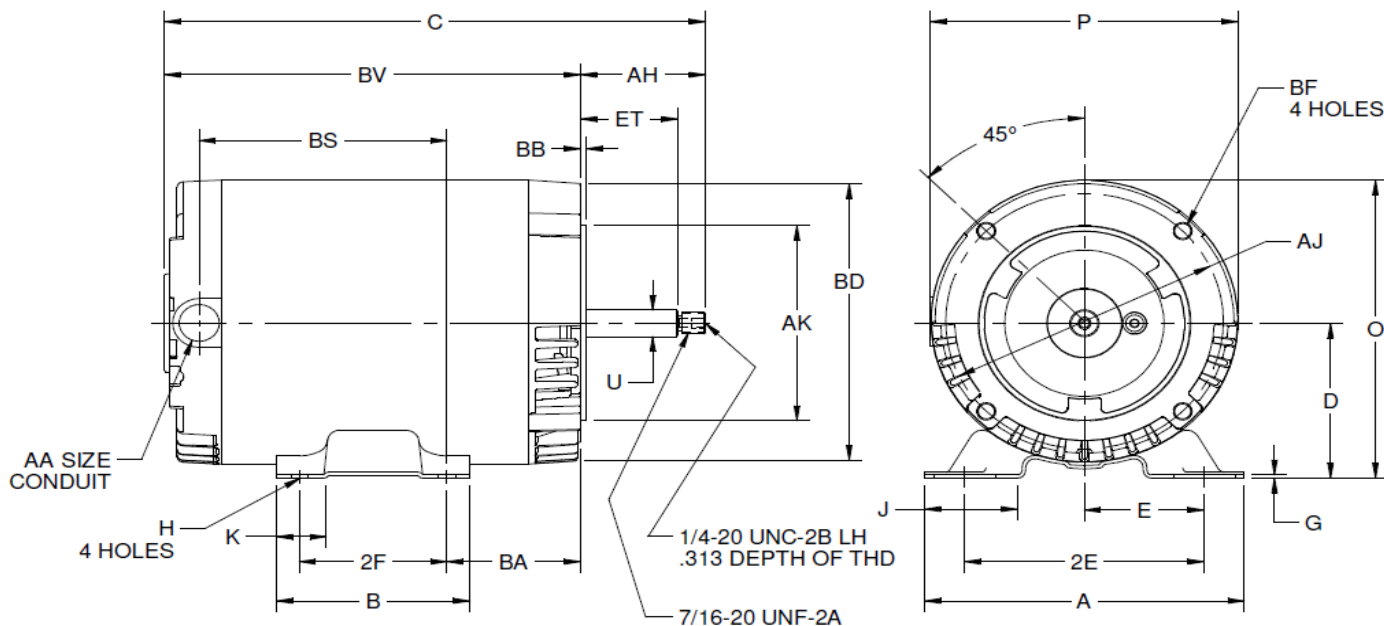


3N088BG

REV.

-



ALL DIMENSIONS ARE IN INCHES AND MILLIMETERS

UNITS	A	B	C	D -.03	E	2E	2F	G	H	J	K
IN	6.50	4.00	11.63	3.50	2.44	4.875	3.00	.104	.344 X 1.25	2.00	1.00
MM	165	102	295	89	62	123.83	76	2.64		51	25

UNITS	O	P ⁴	U -.0005	AA	AH	AJ	AK -.003	BA	BB MIN	BD MAX	BF ³
IN	6.75	6.50	.6250	1/2 NPT	2.56	5.875	4.500	2.56	.13	6.50	3/8-16 X .75
MM	171	165	15.875		65	149.23	114.30	65	3	165	

UNITS	BS	BV	ET ±.015
IN	5.75	9.05	1.875
MM	146	230	47.62

- DIMENSIONS MAY VARY .25" DUE TO CASTING AND/OR FABRICATION VARIATIONS.
- "BF" TAPPED HOLES ARE UNIFIED NATIONAL COARSE, RIGHT HAND THREAD.
- TAP SIZE AND BOLT PENETRATION ALLOWANCE.
- LARGEST MOTOR WIDTH.
- TOLERANCES ARE ALL IN INCHES.
- FRAME REFERENCE: 6.750/56

TOLERANCES

FACE RUNOUT	.004 T.I.R
PERMISSIBLE ECCENTRICITY OF MOUNTING RABBIT	.004 T.I.R
PERMISSIBLE SHAFT RUNOUT	.002 T.I.R

 DRAWING NO. PAGE 1 of 1
3N088BG

 REV.
 -

3N088BG

REV.

-

MOTOR PERFORMANCE

MODEL NO.	CATALOG NO.	PHASE	TYPE	FRAME
3N088BG	3N088BG	3	DE	56J

ORDER NO.	NA	LINE NO.
-----------	----	----------

MPI:	213783	213784	213785	213786	213787
HP:	0.75	0.75	0.75	0.75	0.75
POLES:	2	2	2	2	2
VOLTS:	460	230	208	380	190
HZ:	60	60	60	50	50
SERVICE FACTOR:	1.15	1.15	1.15	1	1
EFFICIENCY (%):					
S.F.	81.5	81.5	80.7		
FULL	80	80	80	81.2	81.2
3/4	78.7	78.7	79.1	80.7	80.7
1/2	73.5	73.5	74.7	77.4	77.4
1/4	60.1	60.1	62.4	66.6	66.6
POWER FACTOR (%):					
S.F.	82.9	82.9	86.5		
FULL	80.2	80.2	84.8	84.6	84.6
3/4	73.5	73.5	79.8	78.9	78.9
1/2	62.2	62.2	70.3	68.1	68.1
1/4	44	44	52.4	48.3	48.3
NO LOAD	17.2	17.2	20.3	15.6	15.6
LOCKED ROTOR	67.1	67.1	66.2	72.5	72.5
AMPS:					
S.F.	1.2	2.4	2.6		
FULL	1.1	2.2	2.3	1.2	2.5
3/4	0.9	1.8	1.8	1	2
1/2	0.8	1.5	1.5	0.8	1.6
1/4	0.7	1.3	1.2	0.7	1.3
NO LOAD	0.6	1.3	1.1	0.6	1.2
LOCKED ROTOR	10	20.1	17.9	9	18
NEMA CODE LETTER	M	M	K	J	J
NEMA DESIGN LETTER	B	B	B	B	B
FULL LOAD RPM	3530	3530	3510	2910	2910
NEMA NOMINAL / EFFICIENCY (%)	80	80	80	81.2	81.2
GUARANTEED EFFICIENCY (%)	77	77	77	77	77
MAX KVAR	0.4	0.4	0.3	0.3	0.3
AMBIENT (°C)	40	40	40	40	40
ALTITUDE (FASL)	3300	3300	3300	3300	3300
SAFE STALL TIME-HOT (SEC)	19	19	25	24	24
SOUND PRESSURE (DBA @ 1M)	0	0	0	0	0
TORQUES:					
BREAKDOWN(% F.L.)	443	443	356	334	334
LOCKED ROTOR(% F.L.)	312	312	248	247	247
FULL LOAD(LB-FT)	1.1	1.1	1.1	1.4	1.4

NEMA Nominal and Guaranteed Efficiencies are up to 3,300 feet above sea level and 25 ° C ambient

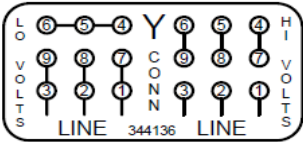
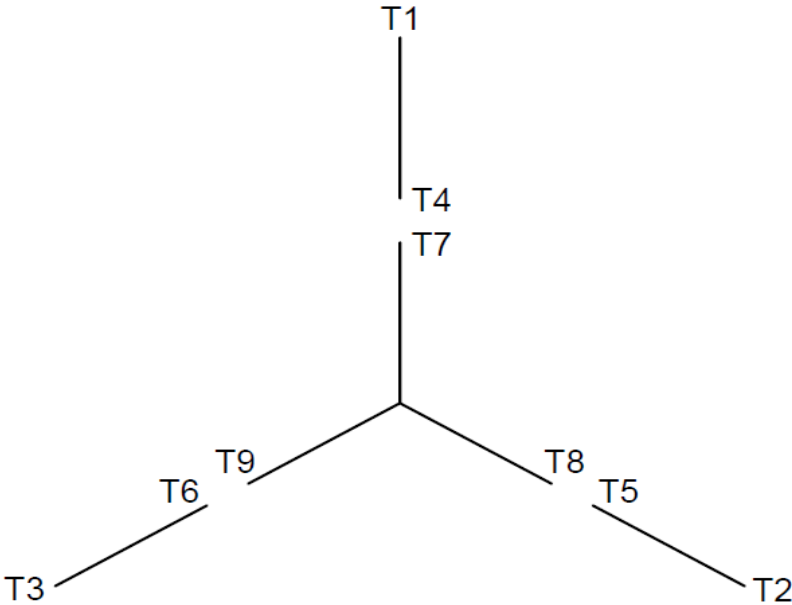
DRAWING NO. PAGE 1 of 1
3N088BG

REV.
-

3N088BG

REV.
0

Motor Wiring Diagram
9 Lead, Dual Voltage (WYE Conn.)



To reverse direction of rotation, interchange leads L1 & L2.
Each lead may have one or more cables comprising that lead.
In such case, cable will be marked with the appropriate lead number.

Dayton[®]Part
No. **3N088BG****JET PUMP
MOTOR**

CC 030A

NEMA
Premium[™]SHAFT
END BRG **6203-2RS-J/C3**OPP
END BRG **6203-2RS-J/C3**FR **56J**TYPE **DE**ENCL **ODP**PH **3** MAX
AMB **40 °C** ID#INSUL
CLASS **F** DUTY **CONT** WT **27 LB** BALHZ **60** HP **.75** RPM **3530**SF **1.5** DESIGN **B** CODE **M**GUARANTEED
EFFICIENCY **77.0** MAX
KVAR **.4**NEMA NOM
EFFICIENCY **80.0** NOM
PF **80.2**VOLTS **208-230/460**FL AMPS **2.3-2.2/1.1**SF AMPS **3.0/1.5**HZ **50** HP **.75** RPM **2910**SF **1.00** DESIGN **B** CODE **J**GUARANTEED
EFFICIENCY **77.0** MAX
KVAR **.3**NEMA NOM
EFFICIENCY **81.2** NOM
PF **84.6**VOLTS **190/380**FL AMPS **2.5/1.2**

SF AMPS

2056640-007 MADE IN MEXICO OF IMPORTED AND DOMESTIC COMPONENTS**Mfd. for Dayton Electric Mfg. Co.**
Lake Forest, IL 60045 USA**ENERGY**
PA[®] **US**
E47479**CSA**[®]
258525