

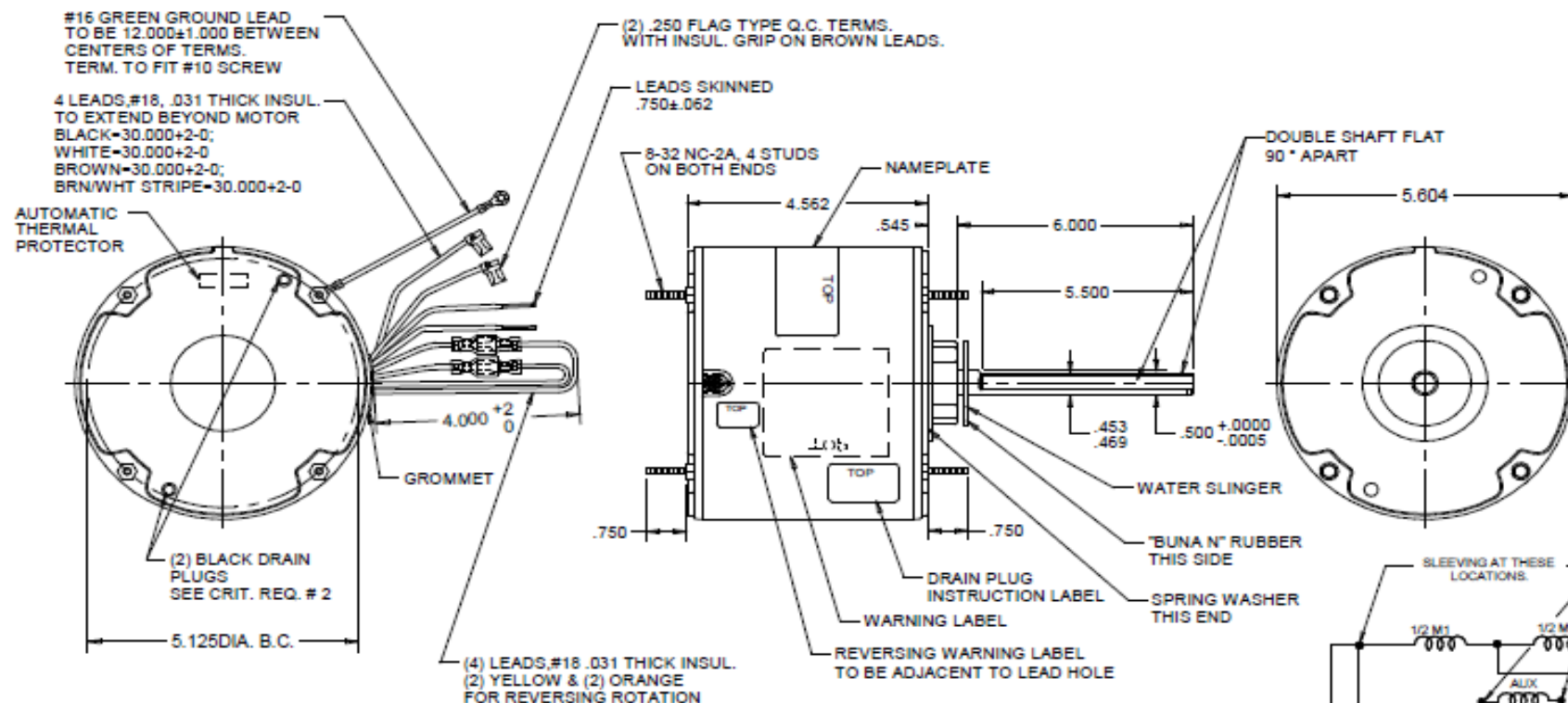
Dimensional Drawing

Dayton[®]

3LU94BJ

REV.
-

MODEL	REF	CUSTOMER	HP	VOLTS	AMPS	HZ	RPM	ROTATION	CUSTOMER PN	DESCRIPTION / REMARKS
K55HXTDS-2318		DAYTON	1/4	480	0.8	60	1075	C.W. LEAD END REV	3LU94BJ	BALL BEARING



DRAWING NO. PAGE 1 of 1
3LU94BJ REV.
-

Dayton Electric Mfg. Co. Lake Forest, IL 60045 USA

3LU94BJ

 REV.
-

SHADED-POLE & PSC MOTOR PERFORMANCE

HP:	1/4							
Poles:	6							
Ambient (°C):	40							
Altitude (FASL):	1000							
No. of Speeds:	1							
HIGH SPEED								
Volts:	460	115	208	230	277	460	100	200
HZ:	60	60	60	60	60	60	50	50
Service Factor:	1.0							
Efficiency:	@ Rated Load					60.6		
Power Factor:	@ Rated Load					96.6		
Amps:	@ No Load							
	@ Rated Load					0.83		
	@ Locked Rotor					1.6		
RPM:	@ Rated Load					1075		
Torques: Oz.Ft.	Breakdown					27.1		
	Locked Rotor					7.6		
	Pull-Up							
	Rated Load					23.4		
	Service Factor					1.0		
Watts:	Rated Load					369		
Temperature Rise:	@ Rated Load							
Thermal Protector:	Trip Temp (°C)					140~150		
Winding Material:	Start (Auxiliary)					Copper		
	Run (Main)					Copper		
Capacitor:	Run (MFD / Volts)	7.5 MFD 370V						
	No. of Run Capacitors	1						

MEDIUM-HIGH SPEED

HP:	1/4							
Volts:	460	115	208	230	277	460	100	200
HZ:	60	60	60	60	60	60	50	50
Efficiency:	@ Rated Load							
Power Factor:	@ Rated Load							
Amps:	@ No Load							
	@ Rated Load							
	@ Locked Rotor							
Torques: Oz.Ft.	Breakdown							
	Locked Rotor							
	Pull-Up							
	Rated Load							
Watts:	Rated Load							
Temperature Rise:	@ Rated Load							

 DRAWING NO. PAGE 1 REV.
 3LU94BJ -

3LU94BJ

REV.

-

SHADED-POLE & PSC MOTOR PERFORMANCE

MEDIUM-LOW SPEED

HP:	1/4							
Volts:	460	115	208	230	277	460	100	200
HZ:	60	60	60	60	60	60	50	50
Efficiency:	@ Rated Load							
Power Factor:	@ Rated Load							
Amps:	@ No Load							
	@ Rated Load							
Torques: Oz.Ft.	Breakdown							
	Locked Rotor							
	Pull-Up							
	Rated Load							
Watts:	Rated Load							
Temperature Rise:	@ Rated Load							
Watts:	Rated Load							
Temperature Rise:	@ Rated Load							
Thermal Protector:	Trip Temp (°C)							
Winding Material:	Start (Auxiliary)							
	Run (Main)							

LOW SPEED

HP:	1/4							
Volts:	460	120	208	230	277	460	100	200
HZ:	60	60	60	60	60	60	50	50
Efficiency:	@ Rated Load							
Power Factor:	@ Rated Load							
Amps:	@ No Load							
	@ Rated Load							
Torques: Oz.Ft.	Breakdown							
	Locked Rotor							
	Pull-Up							
	Rated Load							
Watts:	Rated Load							
Temperature Rise:	@ Rated Load							

Notes:

DRAWING NO.	PAGE	REV.
3LU94BJ	-	-

Dayton Electric Mfg. Co. Lake Forest, IL 60045 USA

Performance Data



3LU94BJ

REV.

-

Dayton Manufacturing Company

Motor Description

Model: 3LU94BJ
Motor ID: 1 OF 1
Poles: 6
Volts: 460
Frequency: 60
HP: 1/4
Speed: 1075
Phase: 1
Protector:

Test Conditions

Test Type: Run
Test Number: 2
Poles: 6
Volts: 460
Hz: 60
Rotation:
Special Cond:
Speed Conn: MI
TestBoard: Amtps Performance Fixture #4
Run Cap: 7.5
Start Cap: 0µfd
Environment:
Tested: 2/3/2007 5:01:58 PM
Tested By: Sharp, Gerald
Gear Ratio: 1:1
Bearing Friction: -0.18 Oz-Ft
Windage Torque: -1.26 Oz-Ft

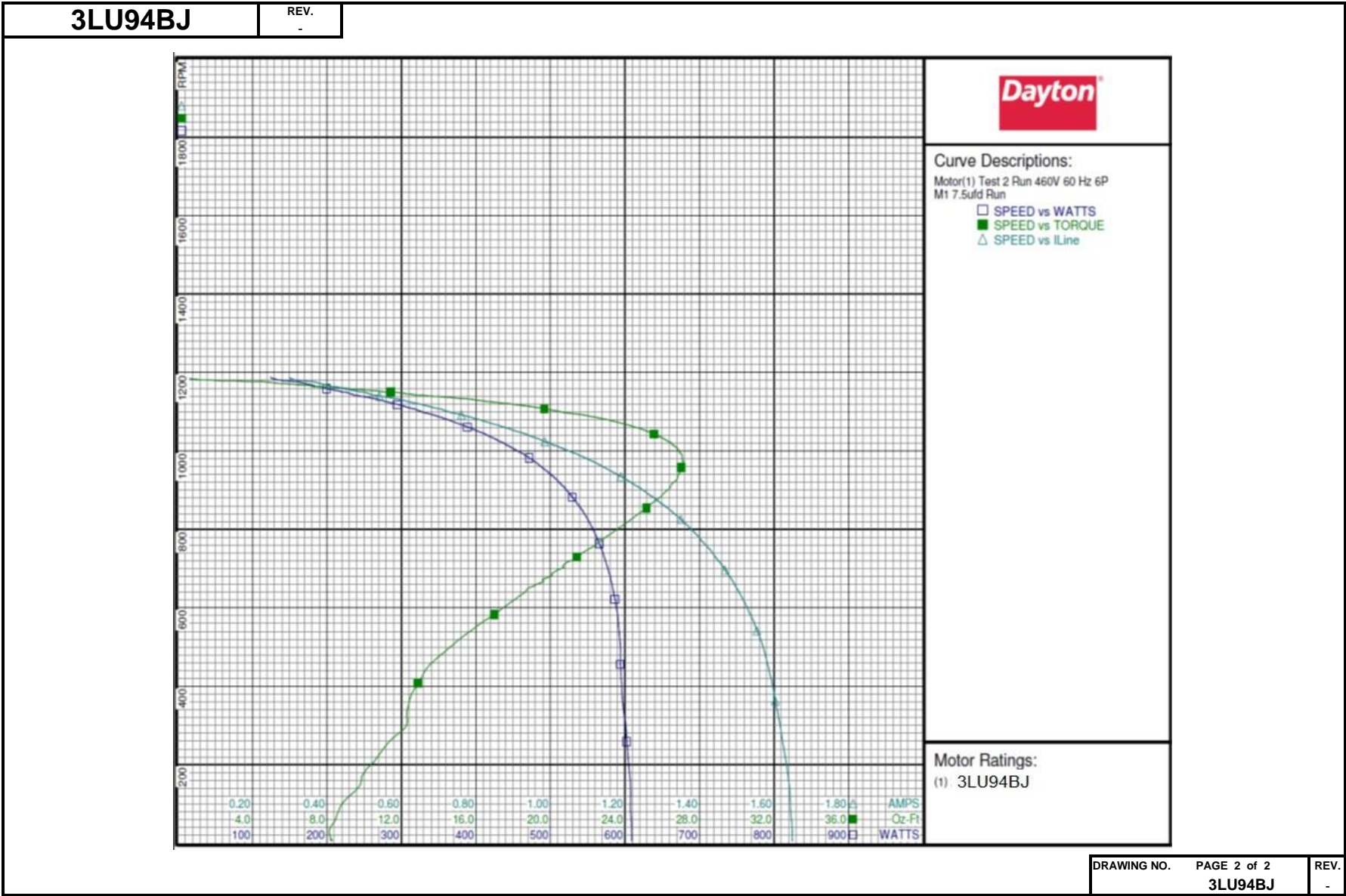
Special Points	Vline (V)	Vaux (V)	Vcap (V)	Iline (A)	Imain (A)	Iaux (A)	Watts	RPM	Tq (Oz-ft)	HP	Eff (%)	PF (%)	Cap
	460.0	313.1	369.0	0.299	0.980	1.058	124.6	1188	0.00	0.000	0.0	90.5	7.6
	460.0	316.3	361.8	0.344	0.909	1.039	151.5	1178	3.49	0.049	24.1	95.7	7.6
	460.0	319.5	353.8	0.392	0.861	1.018	175.1	1170	6.24	0.087	37.0	97.1	7.6
	460.0	322.9	345.1	0.439	0.824	0.992	197.0	1161	8.74	0.121	45.7	97.6	7.6
	460.0	324.2	335.7	0.503	0.791	0.962	226.6	1149	11.77	0.161	53.0	98.0	7.6
	460.0	325.1	326.6	0.571	0.770	0.934	257.6	1135	14.75	0.199	57.7	98.0	7.6
	460.0	323.1	319.3	0.636	0.767	0.915	287.0	1121	17.39	0.232	60.4	98.2	7.6
0.25 HP	460.0	321.4	314.9	0.673	0.772	0.901	303.9	1114	18.86	0.250	61.4	98.1	7.6
	460.0	319.4	311.0	0.705	0.782	0.890	317.8	1107	19.68	0.259	60.9	97.9	7.6
	460.0	315.4	302.3	0.778	0.818	0.866	349.4	1087	22.19	0.287	61.3	97.6	7.6
1075 RPM	460.0	312.4	296.7	0.826	0.853	0.851	369.0	1075	23.44	0.300	60.6	97.2	7.6
	460.0	310.8	294.1	0.849	0.872	0.844	378.9	1068	24.01	0.305	60.1	97.0	7.6
	460.0	305.7	286.0	0.923	0.943	0.822	408.2	1046	25.42	0.317	57.8	96.1	7.6
	460.0	300.3	278.9	0.993	1.020	0.803	435.0	1022	26.43	0.322	55.1	95.3	7.6
	460.0	294.7	272.4	1.062	1.106	0.787	460.5	994	26.96	0.319	51.7	94.3	7.7
BDT OZ-FT	460.0	289.4	267.4	1.122	1.186	0.774	481.4	969	27.14	0.313	48.5	93.2	7.7
	460.0	288.7	266.8	1.129	1.195	0.772	483.6	966	27.11	0.312	48.1	93.1	7.7
	460.0	282.8	262.5	1.189	1.281	0.761	503.7	935	26.83	0.299	44.2	92.1	7.7
	460.0	277.0	259.2	1.246	1.364	0.752	521.0	901	26.32	0.282	40.4	90.9	7.7
	460.0	271.0	256.8	1.298	1.443	0.745	535.6	865	25.41	0.262	36.5	89.7	7.7
	460.0	265.6	255.2	1.345	1.518	0.741	548.7	830	24.46	0.242	32.8	88.7	7.7
	460.0	260.3	254.2	1.388	1.586	0.739	559.5	790	23.29	0.219	29.2	87.6	7.7
	460.0	255.2	253.9	1.427	1.650	0.738	568.5	750	22.08	0.197	25.9	86.6	7.7
	460.0	250.3	253.8	1.462	1.709	0.737	576.1	706	20.65	0.174	22.5	85.7	7.7
	460.0	245.8	254.2	1.494	1.763	0.738	582.7	661	19.30	0.152	19.4	84.8	7.7
	460.0	241.0	255.2	1.522	1.814	0.740	587.5	612	17.81	0.130	16.5	83.9	7.7
	460.0	236.8	255.9	1.547	1.861	0.743	591.2	561	16.28	0.109	13.7	83.1	7.7
	460.0	232.5	256.8	1.569	1.902	0.745	593.7	505	14.77	0.089	11.2	82.3	7.7
	460.0	229.2	257.6	1.585	1.936	0.746	594.3	449	13.42	0.072	9.0	81.5	7.7
	460.0	225.0	259.5	1.599	1.966	0.750	595.9	389	12.65	0.059	7.3	81.0	7.7
	460.0	221.2	261.7	1.611	1.990	0.756	599.1	326	12.29	0.048	5.9	80.8	7.7
	460.0	217.7	264.1	1.623	2.013	0.763	602.3	259	11.35	0.035	4.3	80.7	7.7
	460.0	213.6	266.6	1.635	2.038	0.771	605.6	189	10.12	0.023	2.8	80.5	7.7
	460.0	209.0	269.6	1.644	2.062	0.781	607.3	103	8.87	0.011	1.3	80.3	7.7
	460.0	205.0	272.3	1.649	2.079	0.789	608.8	27	8.11	0.003	0.3	80.3	7.7

DRAWING NO. PAGE 1 of 2
3LU94BJ

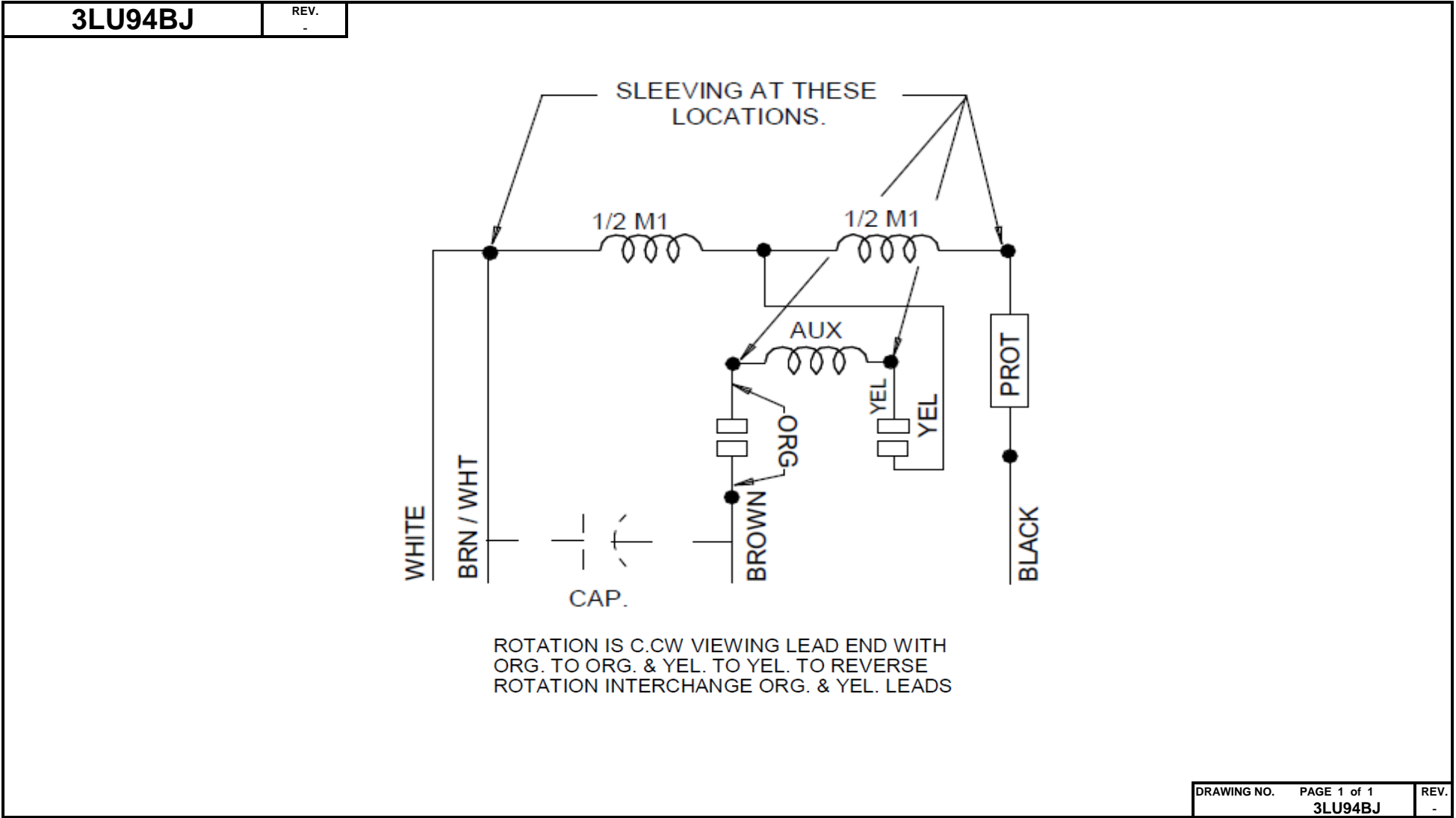
REV.
-

Dayton Electric Mfg. Co. Lake Forest, IL 60045 USA

Performance Data



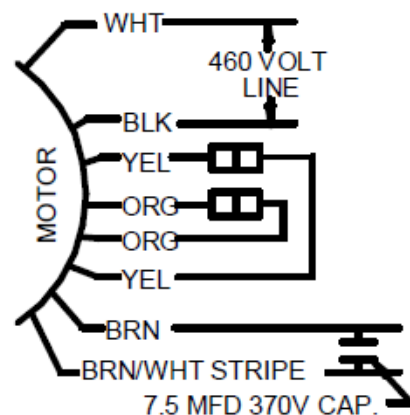
Wiring Diagram



Dayton Electric Mfg. Co. Lake Forest, IL 60045 USA

Dayton®

CONDENSER FAN MOTOR

HP: 1/4**VOLTS:** 460**AMPS:** 0.8**RPM:** 1075**DUTY:** CONT**SF:** 1.0**KVA CODE:****ENCL:** TEAO**THERMALLY PROTECTED:** AUTO**MFG. NO.** **PROT. CODE:** 7A010**MTR REF:** K55HXTDS-2318**BAR CODE****Part
No** 3LU94BJ**PH:** 1**HZ:** 60**FR:** 48YZ**INS CL:** B**AMB:** 60 °C**SFA:****AVG.F.L
EFF.****Disconnect Power Before Making Any
Electrical Connections or Changes**TO REVERSE ROTATION
INTERCHANGE ORG
AND YEL LEADS

E37403



258501

Mfd for Dayton Electric Mfg. Co., Lake Forest, IL 60045 USA

Made In China