

Dayton®

REV.

NOTE:
- KIT 2 1/2 RING CONVERSION
SHIPPED IN CARTON



Performance Data



3LU81BG

REV.
-

MOTOR PERFORMANCE

HP:	1/2HP						
Poles:	4P						
No. of Speeds:	3	High	Medium	Low			
Volts:	115	115	115	115			
HZ:	60	60	60	60			
Service Factor:							
Efficiency:	@ Rated Load	75	64.7				
Power Factor:	@ Rated Load	84.1	89.7				
Amps:	@ No Load						
	@ Rated Load	5.42	5.52	5.52			
	@ Service Factor	5.42	5.52	3.47			
	@ Locked Rotor	23.8	14.1	8.7			
RPM:	@ Rated Load	1713	1608	1625			
Ambient (°C):	40						
Altitude (FASL):							
Torques:	Breakdown	60.5	34.05	23			
	Locked Rotor	9.4	4.1	2.1			
	Pull-Up	4.77	1.86	2			
	Rated Load	25.84	25.84	16.07			
	Service Factor	25.84	25.84	16.07			
Watts:	Rated Load	524.0	570.0	355.0			
KVA Code:							
Temperature Rise:	@ Rated Load	OAO	OAO	OAO			
	@ Service Factor						
Thermal Protector:	Trip Temp (°C)						
Winding Material:	Start (Auxiliary)	Cu					
	Run (Main)	Cu					
Capacitor(s):	Start (MFD / Volts)	N/A					
	No. of Start Capacitors						
	Run (MFD / Volts)	15/370V					
	No. of Run Capacitors						

PERFORMANCE DATA:

HP:							
Poles:							
Volts:							
HZ:							
Efficiency:	@ Rated Load						
Power Factor:	@ Rated Load						
Amps:	@ No Load						
	@ Rated Load						
	@ Service Factor						
	@ Locked Rotor						
Torques:	@ Rated Load						
	Locked Rotor						
	Pull-Up						
	Rated Load						
	Service Factor						
Watts:	@ Rated Load						
Temperature Rise:	@ Rated Load						
	@ Service Factor						

DRAWING NO. PAGE 1 of 1
3LU81BG

REV.
-

Dayton Electric Mfg. Co. Lake Forest, IL 60045 USA

Performance Data



3LU81BG

REV.
-

Dayton Manufacturing Company

Motor Description

Model: K055KDC225101 3LU81BG
Motor ID: 1 OF 2
Poles: 4
Volts: 115
Frequency: 60
HP: 1/2
Speed: 1625
Phase: 1
Protector: 7AM033 A5

Test Conditions

Test Type: Start
Test Number: 2
Poles: 4
Volts: 115
Hz: 60
Rotation:
Special Cond:
Speed Conn: H
TestBoard: CMD InLine Three Phase #1 Fixture #1
Run Cap: 0
Start Cap: 0µfd
Environment:
Tested: 10/12/2015 8:49:54 AM
Tested By: Bribiesca, Griselda
Gear Ratio: 1:1
Bearing Friction: -0.47 Oz-Ft
Windage Torque: -0.83 Oz-Ft

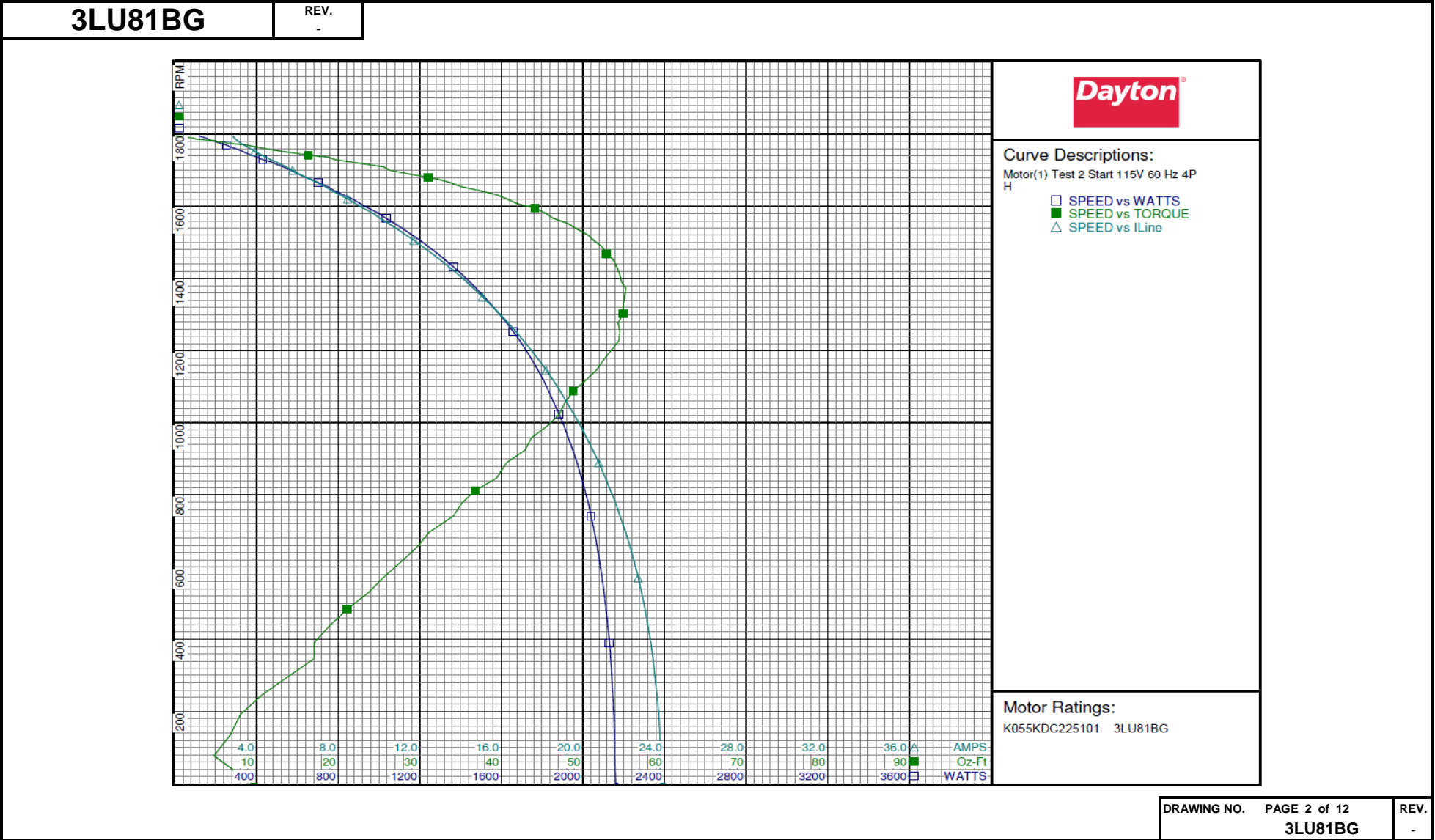
Special Points	Vline(V)	Vaux(V)	Vcap(V)	Iline(A)	Watts	RPM	Tq(Oz-ft)	HP	Eff (%)	PF (%)
PUT OZ-FT	115.0	25.4	32.8	23.78	2156	77	4.77	0.004	0.2	78.8
	115.0	29.6	29.9	23.72	2151	191	8.00	0.018	0.6	78.9
	115.0	38.0	29.3	23.44	2136	346	17.03	0.070	2.4	79.3
	115.0	46.6	30.1	23.05	2114	483	21.09	0.121	4.3	79.8
	115.0	56.5	33.1	22.51	2082	616	27.78	0.204	7.3	80.4
	115.0	67.3	38.3	21.82	2040	741	34.12	0.301	11.0	81.3
	115.0	77.2	44.1	21.11	1993	847	39.44	0.398	14.9	82.1
	115.0	89.2	51.6	20.17	1928	959	43.70	0.499	19.3	83.1
	115.0	100.7	59.4	19.21	1857	1056	47.81	0.601	24.1	84.1
	115.0	111.9	67.4	18.21	1780	1146	51.67	0.705	29.5	85.0
	115.0	123.7	76.1	17.09	1690	1227	54.42	0.795	35.1	86.0
	115.0	135.9	85.2	15.90	1588	1303	54.92	0.852	40.0	86.9
	115.0	148.1	94.5	14.64	1477	1372	55.26	0.903	45.6	87.7
	115.0	159.4	103.3	13.43	1366	1432	54.16	0.923	50.4	88.4
	115.0	170.9	112.2	12.15	1244	1488	52.37	0.927	55.6	89.0
	115.0	182.2	121.1	10.85	1115	1538	49.13	0.900	60.2	89.3
	115.0	192.3	129.1	9.67	994	1582	45.32	0.853	64.1	89.4
	115.0	202.0	137.0	8.47	869	1620	40.68	0.785	67.4	89.1
	115.0	210.9	144.1	7.36	748	1655	35.06	0.691	68.9	88.3
	115.0	218.4	150.5	6.41	641	1680	31.08	0.622	72.4	86.9
	115.0	226.8	157.6	5.45	530	1709	25.57	0.520	73.2	84.5
	115.0	233.6	163.4	4.68	431	1729	19.61	0.404	69.9	80.0
	115.0	237.5	166.8	4.09	351	1747	14.91	0.310	65.8	74.8
	115.0	242.5	171.4	3.63	286	1762	10.57	0.222	57.9	68.4
	115.0	247.5	175.8	3.25	228	1773	7.26	0.153	50.0	61.0
	115.0	250.0	178.6	3.06	180	1782	4.74	0.101	41.8	50.9
	115.0	251.5	180.5	2.92	154	1788	2.32	0.049	24.0	45.7
	115.0	253.6	182.2	2.86	128	1793	0.73	0.016	9.1	38.8
	115.0	253.7	182.4	2.85	117	1795	0.10	0.002	1.4	35.7

DRAWING NO. PAGE 1 of 12
3LU81BG

REV.
-

Dayton Electric Mfg. Co. Lake Forest, IL 60045 USA

Performance Data



Performance Data



3LU81BG

REV.
-

Dayton Manufacturing Company

Motor Description

Model: K055KDC225101 3LU81BG
Motor ID: 1 OF 2
Poles: 4
Volts: 115
Frequency: 60
HP: 1/2
Speed: 1625
Phase: 1
Protector: 7AM033 A5

Test Conditions

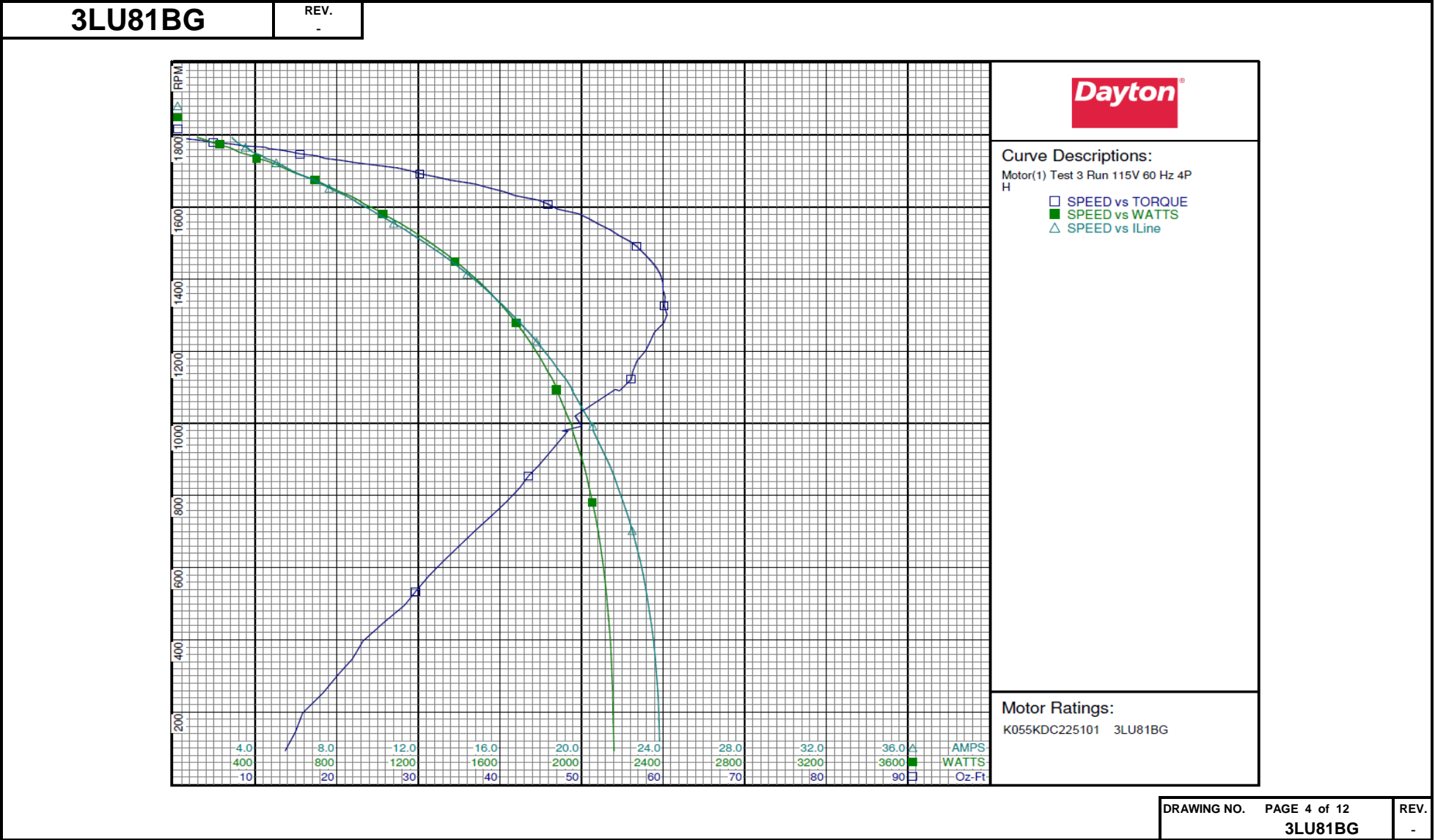
Test Type: Run
Test Number: 3
Poles: 4
Volts: 115
Hz: 60
Rotation:
Special Cond:
Speed Conn: H
TestBoard: CMD InLine Three Phase #1 Fixture #1
Run Cap: 0
Start Cap: 0µfd
Environment:
Tested: 10/12/2015 8:48:40 AM
Tested By: Bribiesca, Griselda
Gear Ratio: 1:1
Bearing Friction: -0.43 Oz-Ft
Windage Torque: -0.96 Oz-Ft

Special Points	Vline (V)	Vaux (V)	Vcap (V)	Iline (A)	Watts	RPM	Tq (oz-ft)	HP	Eff (%)	PF (%)
	115.0	253.3	184.9	2.86	115	1794	0.00	0.000	0.0	35.1
	115.0	252.3	184.0	2.91	135	1790	1.28	0.027	15.2	40.3
	115.0	250.5	182.3	3.02	166	1785	3.53	0.075	33.8	47.7
	115.0	248.4	179.8	3.19	208	1777	6.22	0.132	47.2	56.7
	115.0	244.5	176.2	3.53	269	1766	11.19	0.235	65.2	66.2
	115.0	241.1	173.2	3.87	321	1752	14.56	0.304	70.5	72.1
	115.0	235.0	167.7	4.52	408	1735	18.59	0.384	70.2	78.6
0.5 HP	115.0	228.7	162.6	5.29	509	1717	24.46	0.500	73.3	83.6
	115.0	228.3	162.3	5.33	514	1716	24.89	0.508	73.7	83.8
25.84 OZ-FT	115.0	227.6	161.8	5.42	524	1713	25.84	0.527	75.0	84.1
	115.0	221.7	156.7	6.11	604	1693	30.19	0.608	75.1	86.0
	115.0	213.0	149.4	7.23	733	1664	36.85	0.730	74.3	88.1
	115.0	204.1	141.9	8.44	864	1632	41.88	0.813	70.2	89.1
1625 RPM	115.0	202.4	140.6	8.65	886	1625	43.39	0.839	70.6	89.2
	115.0	194.8	134.4	9.61	988	1594	47.09	0.894	67.5	89.4
	115.0	185.2	126.8	10.80	1110	1555	51.90	0.961	64.6	89.4
	115.0	173.4	117.4	12.24	1251	1504	55.98	1.002	59.8	88.9
	115.0	161.7	108.3	13.60	1381	1450	58.54	1.010	54.6	88.3
	115.0	150.0	99.4	14.92	1502	1391	59.99	0.993	49.4	87.5
	115.0	138.1	90.4	16.19	1613	1325	60.14	0.949	43.9	86.6
BDT OZ-FT	115.0	134.2	87.6	16.59	1647	1302	60.50	0.938	42.5	86.3
	115.0	125.9	81.6	17.42	1715	1253	58.94	0.879	38.2	85.6
	115.0	114.0	73.2	18.56	1807	1173	56.79	0.793	32.7	84.6
	115.0	102.7	65.6	19.60	1885	1090	54.66	0.709	28.1	83.6
	115.0	91.2	58.3	20.56	1954	993	50.05	0.591	22.6	82.6
	115.0	79.6	51.4	21.38	2011	885	44.82	0.472	17.5	81.8
	115.0	69.6	46.5	22.05	2054	781	40.74	0.379	13.8	81.0
	115.0	59.2	42.3	22.69	2093	662	35.09	0.277	9.9	80.2
	115.0	49.5	39.7	23.18	2121	534	29.69	0.189	6.6	79.6
	115.0	40.2	38.6	23.54	2142	396	23.19	0.109	3.8	79.1
	115.0	32.4	38.7	23.75	2153	252	18.32	0.055	1.9	78.8
	115.0	25.2	41.0	23.84	2160	92	13.68	0.015	0.5	78.8

DRAWING NO. PAGE 3 of 12
3LU81BG

REV.
-

Performance Data



Performance Data



3LU81BG

REV.
-

Dayton Manufacturing Company

Motor Description

Model: K055KDC225101 3LU81BG
Motor ID: 1 OF 2
Poles: 4
Volts: 115
Frequency: 60
HP: 1/2
Speed: 1625
Phase: 1
Protector: 7AM033 A5

Test Conditions

Test Type: Start
Test Number: 9
Poles: 4
Volts: 115
Hz: 60
Rotation:
Special Cond:
Speed Conn: M
TestBoard: CMD InLine Three Phase #1
Run Cap: 0
Start Cap: 0µfd
Environment:
Tested: 10/12/2015 8:44:54 AM
Tested By: Bribiesca, Griselda
Gear Ratio: 1:1
Bearing Friction: -0.43 Oz-Ft
Windage Torque: -1.09 Oz-Ft

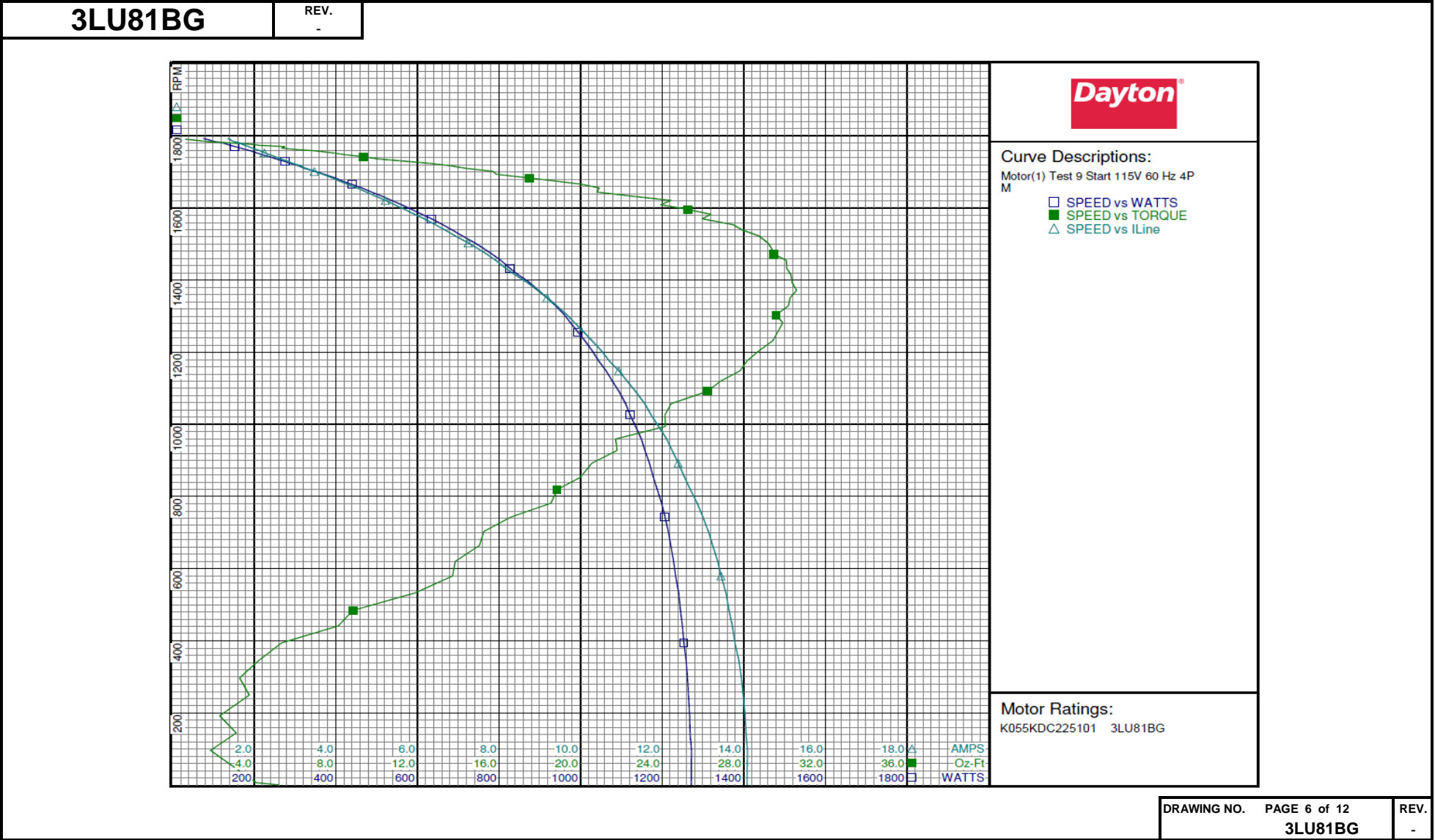
Special Points	Vline(V)	Vaux(V)	Vcap(V)	Iline(A)	Watts	RPM	Tq(Oz-ft)	HP	Eff (%)	PF (%)
	115.0	17.8	25.8	14.079	1271.4	6	4.09	0.000	0.0	78.5
PUT OZ-FT	115.0	19.8	24.0	14.091	1271.9	95	1.86	0.002	0.1	78.5
	115.0	21.3	21.9	14.034	1267.4	192	2.30	0.005	0.3	78.5
	115.0	26.3	21.0	13.885	1258.8	343	4.17	0.017	1.0	78.8
	115.0	33.2	21.6	13.639	1244.7	484	8.84	0.051	3.1	79.4
	115.0	39.8	23.3	13.362	1228.1	620	13.85	0.102	6.2	79.9
	115.0	47.3	26.8	12.999	1207.0	743	16.58	0.147	9.1	80.7
	115.0	55.5	31.4	12.551	1178.5	853	19.99	0.203	12.8	81.6
	115.0	62.8	35.9	12.110	1148.8	959	21.72	0.248	16.1	82.5
	115.0	71.2	41.5	11.571	1110.4	1057	24.44	0.308	20.7	83.4
	115.0	80.5	48.1	10.939	1062.5	1148	27.82	0.380	26.7	84.5
	115.0	89.6	54.8	10.281	1010.2	1232	29.43	0.432	31.9	85.4
	115.0	97.9	60.9	9.663	959.8	1304	29.59	0.459	35.7	86.4
	115.0	107.3	68.0	8.948	896.9	1371	30.59	0.499	41.5	87.2
	115.0	117.0	75.5	8.167	826.8	1433	30.10	0.513	46.3	88.0
	115.0	125.8	82.3	7.447	759.7	1489	29.34	0.520	51.1	88.7
	115.0	134.7	89.4	6.683	685.7	1538	27.94	0.512	55.7	89.2
	115.0	143.2	96.1	5.936	610.9	1582	26.39	0.497	60.7	89.5
	115.0	151.3	102.6	5.217	537.1	1621	24.44	0.471	65.5	89.5
	115.0	158.8	108.7	4.527	464.4	1655	20.91	0.412	66.2	89.2
	115.0	165.7	114.2	3.915	398.7	1683	17.50	0.351	65.6	88.6
	115.0	172.8	120.1	3.262	323.2	1710	14.39	0.293	67.6	86.1
	115.0	177.6	123.9	2.830	274.9	1729	11.52	0.237	64.3	84.5
	115.0	183.1	128.6	2.380	219.8	1748	8.45	0.176	59.6	80.3
	115.0	187.6	132.5	2.057	179.0	1762	6.08	0.128	53.2	75.6
	115.0	192.8	136.8	1.773	142.0	1773	4.30	0.091	47.7	69.7
	115.0	198.0	141.3	1.581	113.8	1782	2.26	0.048	31.5	62.6
	115.0	201.5	144.4	1.428	91.1	1788	1.07	0.023	18.6	55.5
	115.0	202.0	145.3	1.357	76.1	1793	0.12	0.003	2.5	48.8

DRAWING NO. PAGE 5 of 12
3LU81BG

REV.
-

Dayton Electric Mfg. Co. Lake Forest, IL 60045 USA

Performance Data



Performance Data



3LU81BG

REV.
-

Dayton Manufacturing Company

Motor Description

Model: K055KDC225101 3LU81BG
Motor ID: 1 OF 2
Poles: 4
Volts: 115
Frequency: 60
HP: 1/2
Speed: 1625
Phase: 1
Protector: 7AM033 A5

Test Conditions

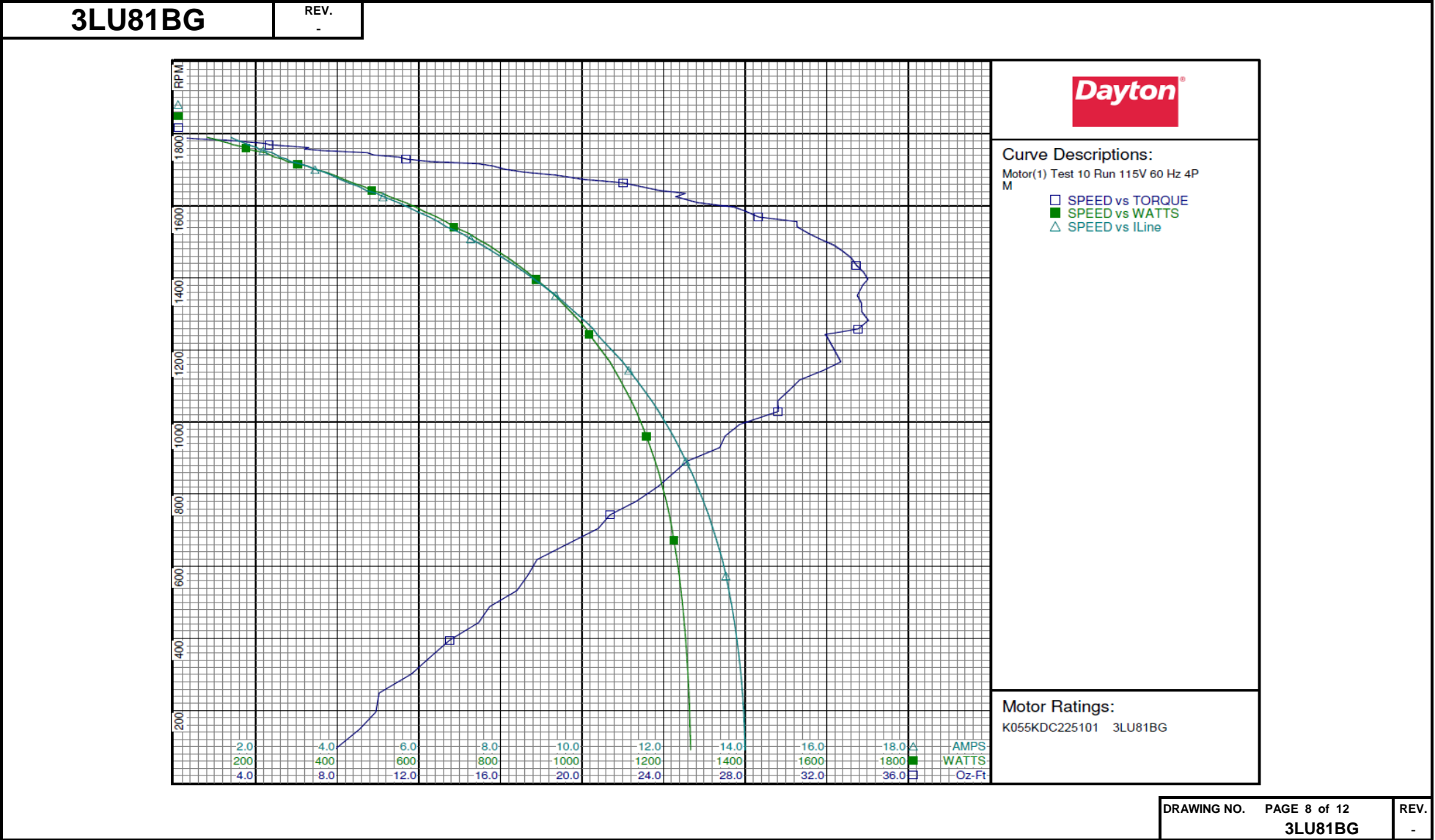
Test Type: Run
Test Number: 10
Poles: 4
Volts: 115
Hz: 60
Rotation:
Special Cond:
Speed Conn: M
TestBoard: CMD InLine Three Phase #1 Fixture #1
Run Cap: 0
Start Cap: 0µfd
Environment:
Tested: 10/12/2015 8:43:44 AM
Tested By: Bribiesca, Griselda
Gear Ratio: 1:1
Bearing Friction: -0.44 Oz-Ft
Windage Torque: -1.13 Oz-Ft

Special Points	Vline(V)	Vaux(V)	Vcap(V)	Iline(A)	Watts	RPM	Tq(Oz-ft)	HP	Eff (%)	PF (%)
	115.0	201.7	143.5	1.395	81.4	1790	0.00	0.000	0.0	50.7
	115.0	200.2	142.1	1.485	99.2	1784	1.45	0.031	23.1	58.1
	115.0	196.2	138.7	1.644	121.1	1777	3.46	0.073	45.1	64.1
	115.0	190.9	134.5	1.898	158.8	1766	5.45	0.115	53.8	72.7
	115.0	186.2	130.6	2.189	195.4	1753	7.29	0.152	58.1	77.6
	115.0	181.4	127.1	2.580	244.8	1735	10.98	0.227	69.1	82.5
	115.0	175.2	122.1	3.077	302.8	1717	14.88	0.304	74.9	85.6
	115.0	168.8	116.9	3.670	371.3	1694	17.13	0.345	69.4	88.0
	115.0	162.2	111.8	4.273	437.1	1664	22.01	0.436	74.4	88.9
	115.0	154.7	106.0	4.964	511.7	1634	25.08	0.488	71.1	89.6
1625 RPM	115.0	153.3	104.8	5.129	528.4	1625	24.60	0.476	67.2	89.6
0.5 HP	115.0	148.6	101.2	5.567	574.4	1605	26.17	0.500	64.9	89.7
25.84 OZ-FT	115.0	149.1	101.6	5.525	570.0	1608	25.84	0.494	64.7	89.7
	115.0	146.5	99.6	5.734	592.1	1596	27.45	0.522	65.7	89.8
	115.0	138.2	93.3	6.476	666.1	1556	30.53	0.566	63.3	89.4
	115.0	129.2	86.4	7.276	743.7	1508	31.67	0.569	57.0	88.9
	115.0	120.1	79.4	8.066	818.7	1455	33.20	0.575	52.4	88.3
	115.0	110.8	72.4	8.827	887.3	1396	34.01	0.565	47.5	87.4
	115.0	101.3	65.3	9.581	952.4	1330	33.71	0.534	41.8	86.4
BDT OZ-FT	115.0	95.1	60.7	10.057	992.1	1282	34.05	0.520	39.1	85.8
	115.0	92.3	58.7	10.276	1010.4	1258	33.54	0.502	37.1	85.5
	115.0	81.7	50.9	11.000	1068.5	1167	32.69	0.454	31.7	84.5
	115.0	74.2	45.5	11.522	1107.0	1089	30.17	0.391	26.3	83.6
	115.0	65.8	39.5	12.069	1146.5	994	27.73	0.328	21.3	82.6
	115.0	57.7	34.0	12.551	1179.1	892	25.16	0.267	16.9	81.7
	115.0	49.7	28.7	12.979	1206.7	780	22.67	0.211	13.0	80.8
	115.0	42.8	24.4	13.298	1225.3	673	19.70	0.158	9.6	80.1
	115.0	35.0	20.2	13.603	1242.6	532	16.81	0.107	6.4	79.4
	115.0	28.9	17.8	13.800	1254.5	395	13.51	0.063	3.8	79.0
	115.0	23.6	16.7	13.936	1262.4	248	10.05	0.030	1.8	78.8
	115.0	19.3	17.7	13.997	1266.3	90	7.85	0.008	0.5	78.7

DRAWING NO. PAGE 7 of 12
3LU81BG

REV.
-

Dayton Electric Mfg. Co. Lake Forest, IL 60045 USA



Performance Data



3LU81BG

REV.
-

Dayton Manufacturing Company

Motor Description

Model: K055KDC225101 3LU81BG
Motor ID: 1 OF 2
Poles: 4
Volts: 115
Frequency: 60
HP: 1/2
Speed: 1625
Phase: 1
Protector: 7AM033 A5

Test Conditions

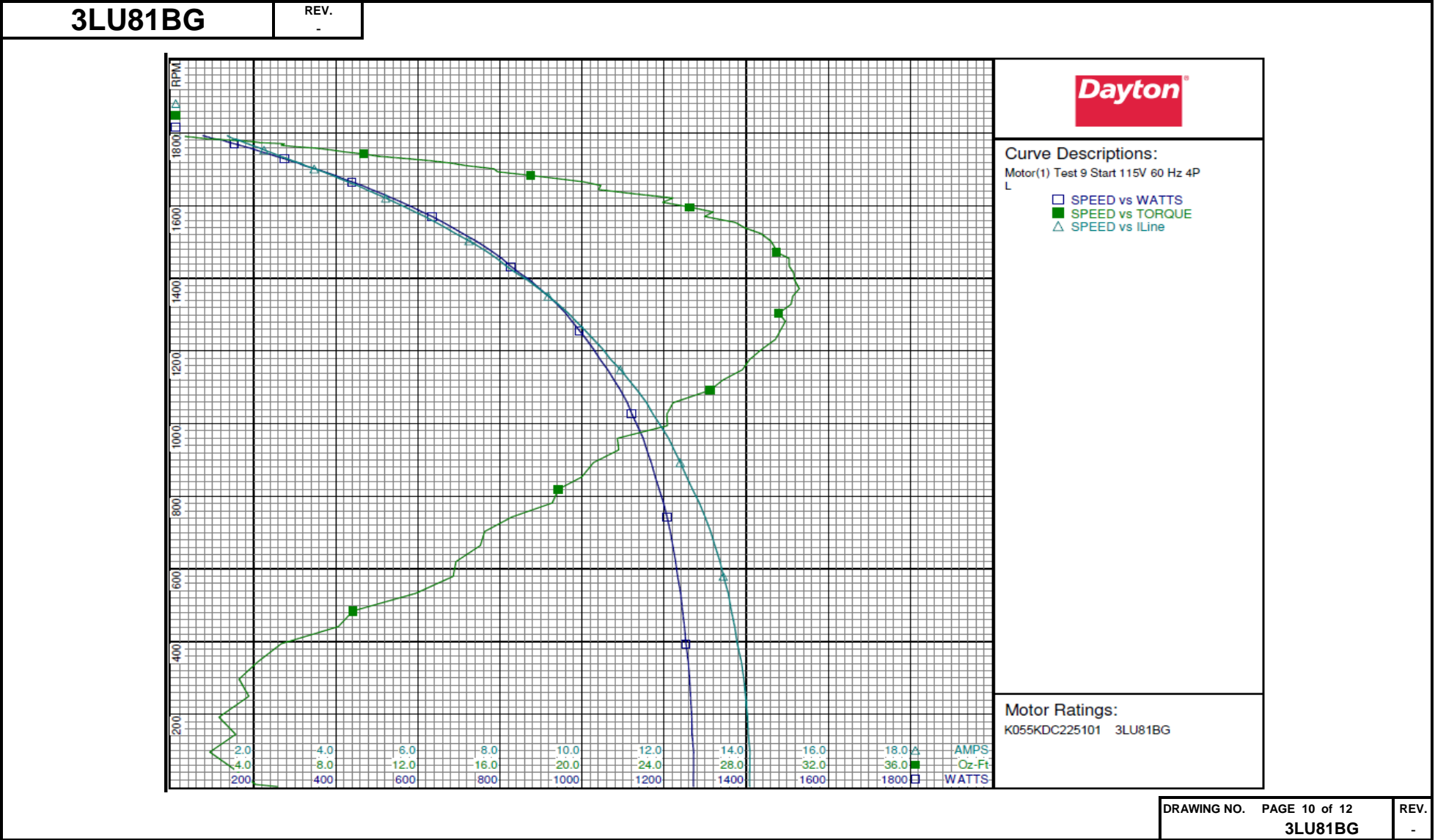
Test Type: Start
Test Number: 9
Poles: 4
Volts: 115
Hz: 60
Rotation:
Special Cond:
Speed Conn: L
TestBoard: CMD InLine Three Phase #1 Fixture #1
Run Cap: 0
Start Cap: 0µfd
Environment:
Tested: 10/12/2015 8:44:54 AM
Tested By: Bribiesca, Griselda
Gear Ratio: 1:1
Bearing Friction: -0.43 Oz-Ft
Windage Torque: -1.09 Oz-Ft

Special Points	Vline (V)	Vaux (V)	Vcap (V)	Iline (A)	Watts	RPM	Tq (Oz-ft)	HP	Eff (%)	PF (%)
	115.0	17.8	25.8	14.079	1271.4	6	4.09	0.000	0.0	78.5
PUT OZ-FT	115.0	19.8	24.0	14.091	1271.9	95	1.86	0.002	0.1	78.5
	115.0	21.3	21.9	14.034	1267.4	192	2.30	0.005	0.3	78.5
	115.0	26.3	21.0	13.885	1258.8	343	4.17	0.017	1.0	78.8
	115.0	33.2	21.6	13.639	1244.7	484	8.84	0.051	3.1	79.4
	115.0	39.8	23.3	13.362	1228.1	620	13.85	0.102	6.2	79.9
	115.0	47.3	26.8	12.999	1207.0	743	16.58	0.147	9.1	80.7
	115.0	55.5	31.4	12.551	1178.5	853	19.99	0.203	12.8	81.6
	115.0	62.8	35.9	12.110	1148.8	959	21.72	0.248	16.1	82.5
	115.0	71.2	41.5	11.571	1110.4	1057	24.44	0.308	20.7	83.4
	115.0	80.5	48.1	10.939	1062.5	1148	27.82	0.380	26.7	84.5
	115.0	89.6	54.8	10.281	1010.2	1232	29.43	0.432	31.9	85.4
	115.0	97.9	60.9	9.663	959.8	1304	29.59	0.459	35.7	86.4
	115.0	107.3	68.0	8.948	896.9	1371	30.59	0.499	41.5	87.2
	115.0	117.0	75.5	8.167	826.8	1433	30.10	0.513	46.3	88.0
	115.0	125.8	82.3	7.447	759.7	1489	29.34	0.520	51.1	88.7
	115.0	134.7	89.4	6.683	685.7	1538	27.94	0.512	55.7	89.2
	115.0	143.2	96.1	5.936	610.9	1582	26.39	0.497	60.7	89.5
	115.0	151.3	102.6	5.217	537.1	1621	24.44	0.471	65.5	89.5
	115.0	158.8	108.7	4.527	464.4	1655	20.91	0.412	66.2	89.2
	115.0	165.7	114.2	3.915	398.7	1683	17.50	0.351	65.6	88.6
	115.0	172.8	120.1	3.262	323.2	1710	14.39	0.293	67.6	86.1
	115.0	177.6	123.9	2.830	274.9	1729	11.52	0.237	64.3	84.5
	115.0	183.1	128.6	2.380	219.8	1748	8.45	0.176	59.6	80.3
	115.0	187.6	132.5	2.057	179.0	1762	6.08	0.128	53.2	75.6
	115.0	192.8	136.8	1.773	142.0	1773	4.30	0.091	47.7	69.7
	115.0	198.0	141.3	1.581	113.8	1782	2.26	0.048	31.5	62.6
	115.0	201.5	144.4	1.428	91.1	1788	1.07	0.023	18.6	55.5
	115.0	202.0	145.3	1.357	76.1	1793	0.12	0.003	2.5	48.8

DRAWING NO. PAGE 9 of 12
3LU81BG

REV.
-

Performance Data



Performance Data



3LU81BG

REV.
-

Dayton Manufacturing Company

Motor Description

Model: K055KDC225101 3LU81BG
Motor ID: 1 OF 2
Poles: 4
Volts: 115
Frequency: 60
HP: 1/2
Speed: 1625
Phase: 1
Protector: 7AM033 A5

Test Conditions

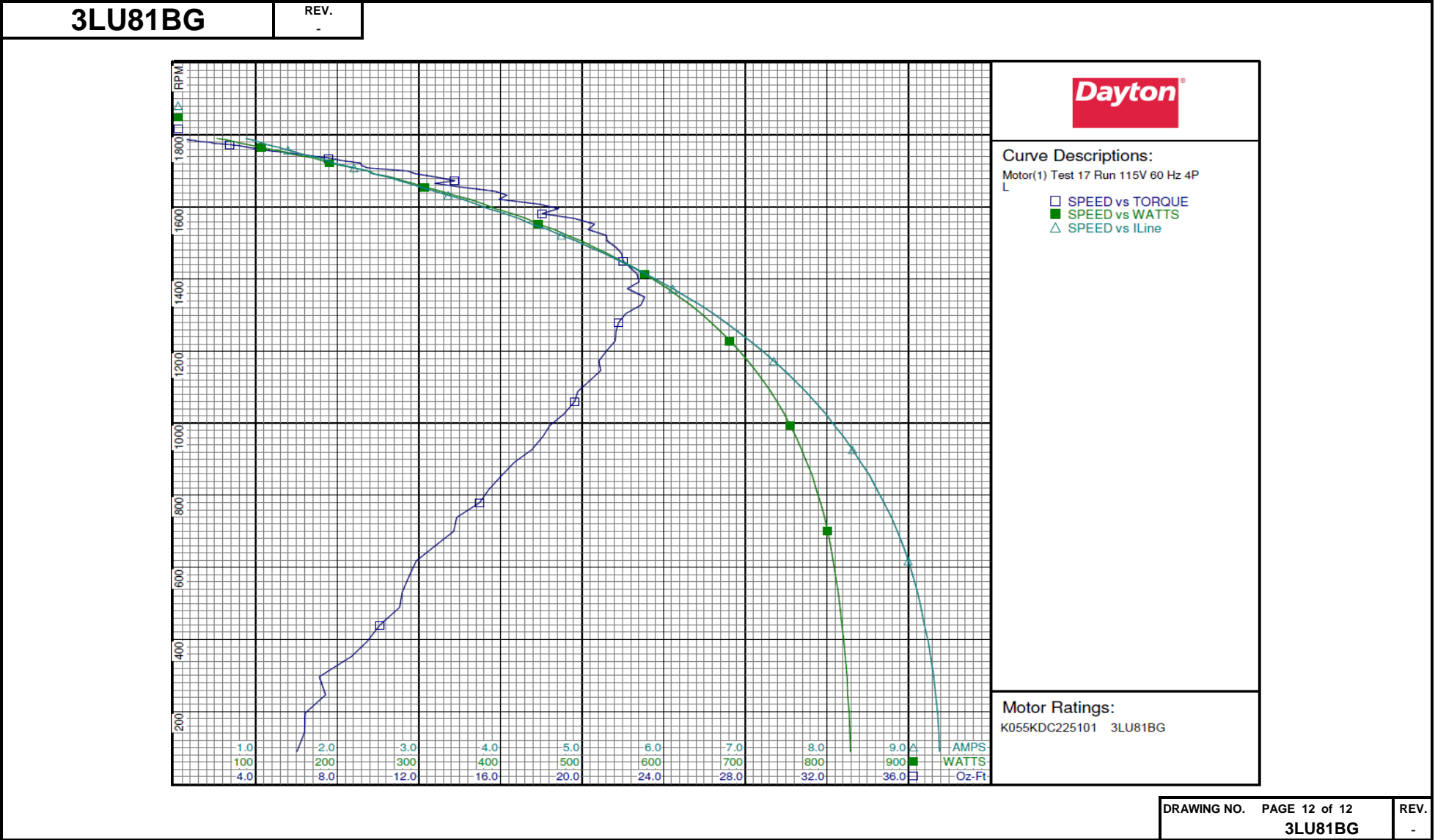
Test Type: Run
Test Number: 17
Poles: 4
Volts: 115
Hz: 60
Rotation:
Special Cond:
Speed Conn: L
TestBoard: CMD InLine Three Phase #1
Run Cap: 0
Start Cap: 0µfd
Environment:
Tested: 10/12/2015 8:39:23 AM
Tested By: Bribiesca, Griselda
Gear Ratio: 1:1
Bearing Friction: -0.47 Oz-Ft
Windage Torque: -1.16 Oz-Ft

Special Points	Vline(V)	Vaux(V)	Vcap(V)	Iline(A)	Watts	RPM	Tq(Oz-ft)	HP	Eff(%)	PF(%)
	115.0	166.0	117.9	0.879	52.3	1790	0.00	0.000	0.0	51.7
	115.0	164.4	116.6	0.961	65.3	1786	0.74	0.016	18.0	59.1
	115.0	161.1	114.0	1.051	77.6	1779	1.81	0.038	36.8	64.2
	115.0	156.4	110.2	1.202	98.1	1769	3.27	0.069	52.4	70.9
	115.0	152.3	107.1	1.397	123.1	1758	4.39	0.092	55.6	76.6
	115.0	148.1	103.9	1.662	155.6	1742	6.76	0.140	67.2	81.4
	115.0	143.7	100.5	1.952	190.1	1722	9.14	0.187	73.5	84.7
	115.0	137.8	95.9	2.372	238.9	1700	11.44	0.231	72.3	87.6
	115.0	132.7	92.0	2.761	280.3	1673	13.76	0.274	73.0	88.3
	115.0	127.0	87.6	3.194	326.8	1644	15.73	0.308	70.2	89.0
1625 RPM	115.0	123.5	84.9	3.473	355.5	1625	16.07	0.311	65.3	89.0
	115.0	120.3	82.5	3.703	379.6	1608	17.87	0.342	67.2	89.1
	115.0	113.4	77.1	4.226	432.0	1568	19.65	0.367	63.3	88.9
	115.0	106.2	71.7	4.749	482.1	1521	21.19	0.384	59.4	88.3
	115.0	98.7	66.0	5.276	531.4	1470	21.94	0.384	53.9	87.6
	115.0	91.3	60.4	5.787	577.1	1413	22.70	0.382	49.4	86.7
BDT OZ-FT	115.0	83.7	54.7	6.283	619.3	1350	23.07	0.371	44.7	85.7
	115.0	83.7	54.7	6.283	619.3	1350	23.07	0.371	44.7	85.7
	115.0	76.2	49.0	6.763	658.4	1279	21.79	0.332	37.6	84.7
	115.0	68.7	43.4	7.215	693.1	1200	21.19	0.303	32.6	83.5
	115.0	61.7	38.3	7.610	721.9	1118	20.37	0.271	28.0	82.5
	115.0	54.6	33.2	7.988	748.0	1026	19.11	0.233	23.3	81.4
	115.0	48.1	28.5	8.317	769.2	926	17.53	0.193	18.7	80.4
	115.0	41.7	24.0	8.614	787.3	815	15.42	0.150	14.2	79.5
	115.0	35.4	19.8	8.864	801.2	700	13.72	0.114	10.6	78.6
	115.0	29.5	15.9	9.056	810.6	575	11.52	0.079	7.3	77.8
	115.0	24.9	13.4	9.195	818.5	440	10.09	0.053	4.8	77.4
	115.0	20.5	11.5	9.310	824.9	296	7.11	0.025	2.3	77.0
	115.0	17.0	11.3	9.373	828.3	143	6.40	0.011	1.0	76.8

DRAWING NO. PAGE 11 of 12
3LU81BG

REV.
-

Performance Data



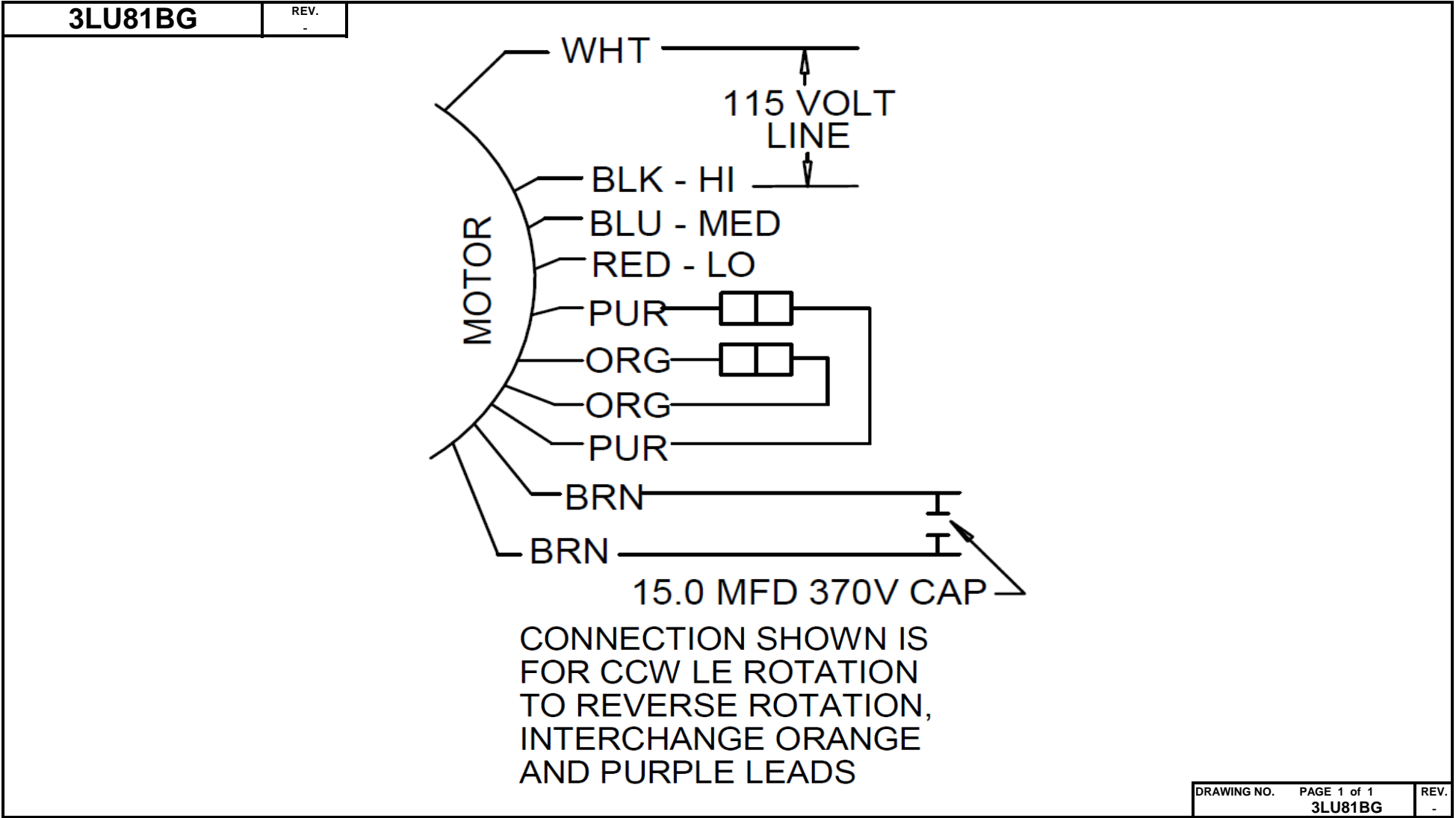
DRAWING NO.

PAGE 12 of 12

REV.

3LU81BG

-



Dayton®

DIRECT DRIVE BLOWER MOTOR

HP: 1/2
VOLTS: 115

AMPS: 5.5
RPM: 1625/3 SPD
DUTY: CONT
SF: 1.0
KVA CODE:
ENCL: OAO

THERMALLY PROTECTED: AUTO

MFG. NO. PROT. CODE: 7A000

MTR REF: K55HXKDC-2251



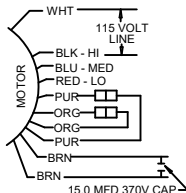
Part No 3LU81BG

PH: 1
HZ: 60
FR: 48YZ
INS CL: B
AMB: 40 °C
SFA: 5.5

AVG. F.L.
EFF.

**Disconnect Power Before Making Any
Electrical Connections or Changes**

TO REVERSE ROTATION
INTERCHANGE ORG
AND PUR LEADS



UL®
E37403

CSA®
258501

Mfd for Dayton Electric Mfg. Co., Lake Forest, IL 60045 USA

Made in Mexico