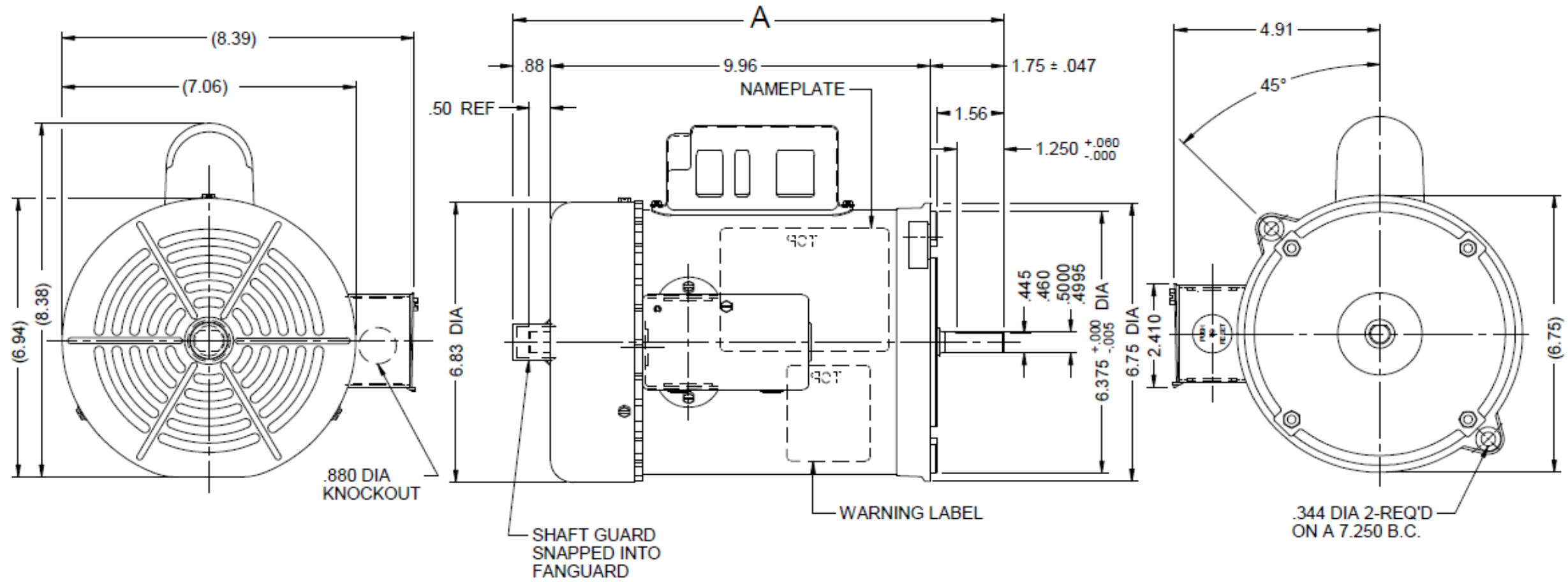


Dimensional Drawing

3K996BG REV.
-

| VAR | MODEL | CUST. PT. NO. | A | B | C | D | HP | VOLTS | SF | AMPS | HZ | RPM | CONN VOLTS | PROT. | DESCRIPTION / REMARKS |
|-----|---------------|---------------|-------|-------|-------|-------|-----|---------|-----|---------------------|-------|-----------|------------|--------|------------------------|
| 001 | C63BXGJH-1308 | 3K996BG | 12.59 | ----- | ----- | ----- | 3/4 | 115/230 | 1.0 | 10.6/5.3 & 11.8/5.9 | 50/60 | 1425/1725 | --- | MANUAL | N56, TEFC, AUGER MOTOR |



DRAWING NO. PAGE 1 of 1 REV.
3K996BG -

Performance Data



3K996BG

REV.
-

MOTOR PERFORMANCE

| | | | | | | | | |
|---------------------------|--|-------------|------------|------------|------------|--|--|--|
| HP: | 3/4 | | | | | | | |
| Poles: | 4 | | | | | | | |
| No. of Speeds: | Note - If two-speed, complete lower portion of form for low speed. | | | | | | | |
| Volts: | 115/230 | 115 | 230 | 115 | 230 | | | |
| HZ: | 60/50 | 60 | 60 | 50 | 50 | | | |
| Service Factor: | 1 | | | | | | | |
| Efficiency: | @ Rated Load | 70.9 | 72.1 | 68.7 | 69.7 | | | |
| Power Factor: | @ Rated Load | 69.3 | 68.4 | 64.4 | 63.7 | | | |
| Amps: | @ No Load | 6.833 | 3.417 | 8.597 | 4.283 | | | |
| | @ Rated Load | 9.91 | 4.94 | 10.99 | 5.47 | | | |
| | @ Service Factor | - | - | - | - | | | |
| | @ Locked Rotor | 61.24 | 30.12 | 61.12 | 30.85 | | | |
| RPM: | @ Rated Load | 1727 | 1730 | 1439 | 1441 | | | |
| Ambient (°C): | | | | | | | | |
| Altitude (FASL): | | | | | | | | |
| Torques: | Breakdown | 88.68 | 90.25 | 117.6 | 119.6 | | | |
| | Locked Rotor | 153.68 | 128.34 | 192.6 | 167.4 | | | |
| | Pull-Up | 152.64 | 126.3 | 191.3 | 165.6 | | | |
| | Rated Load | 36.5 | 36.5 | 43.8 | 43.7 | | | |
| | Service Factor | - | - | - | - | | | |
| Watts: | Rated Load | 790 | 778 | 814 | 803 | | | |
| KVA Code: | | | | | | | | |
| Temperature Rise: | @ Rated Load | 62.6 | 63.1 | 81.2 | 81.3 | | | |
| | @ Service Factor | - | - | - | - | | | |
| Thermal Protector: | Trip Temp (°C) | 145.5 | 166.1 | 147.4 | 165.6 | | | |
| Winding Material: | Start (Auxiliary) | Cu | | | | | | |
| | Run (Main) | Cu | | | | | | |
| Capacitor(s): | Start (MFD / Volts) | 677Mfd/125V | | | | | | |
| | No. of Start Capacitors | 1 | | | | | | |
| | Run (MFD / Volts) | N/A | | | | | | |
| | No. of Run Capacitors | - | | | | | | |

LOW SPEED PERFORMANCE DATA:

| | | | | | | | | |
|--------------------------|------------------|------------|------------|------------|------------|--|--|--|
| HP: | | | | | | | | |
| Poles: | | | | | | | | |
| Volts: | | 115 | 230 | 115 | 230 | | | |
| HZ: | | 60 | 60 | 50 | 50 | | | |
| Efficiency: | @ Rated Load | - | - | - | - | | | |
| Power Factor: | @ Rated Load | - | - | - | - | | | |
| Amps: | @ No Load | - | - | - | - | | | |
| | @ Rated Load | - | - | - | - | | | |
| | @ Service Factor | - | - | - | - | | | |
| | @ Locked Rotor | - | - | - | - | | | |
| Torques: | @ Rated Load | - | - | - | - | | | |
| | Locked Rotor | - | - | - | - | | | |
| | Pull-Up | - | - | - | - | | | |
| | Rated Load | - | - | - | - | | | |
| | Service Factor | - | - | - | - | | | |
| Watts: | @ Rated Load | - | - | - | - | | | |
| Temperature Rise: | @ Rated Load | - | - | - | - | | | |
| | @ Service Factor | - | - | - | - | | | |

DRAWING NO. PAGE 1 of 1 REV.
3K996BG -

Performance Data



3K996BG REV.
-

Dayton Manufacturing Company

Motor Description

Model: C063GJH1306 3K996BG
 Motor ID: 1
 Poles: 4
 Volts: 115/230
 Frequency: 60/50
 HP: 3/4
 Speed: 1725/1425
 Phase: 1
 Protector: CED3723

Test Conditions

Test Type: Start Run Cap: 0
 Test Number: 5 Start Cap: 677 µF
 Poles: 4 Environment:
 Volts: 115 Tested: 2/8/2003 1:37:19 PM
 Hz: 60 Tested By: Sharp, Gerald
 Rotation: Gear Ratio: 1:1
 Special Cond: Bearing Friction: -0.61 Oz-Ft
 Speed Conn: Windage Torque: -1.35 Oz-Ft
 TestBoard: Amps Performance Fixture #1

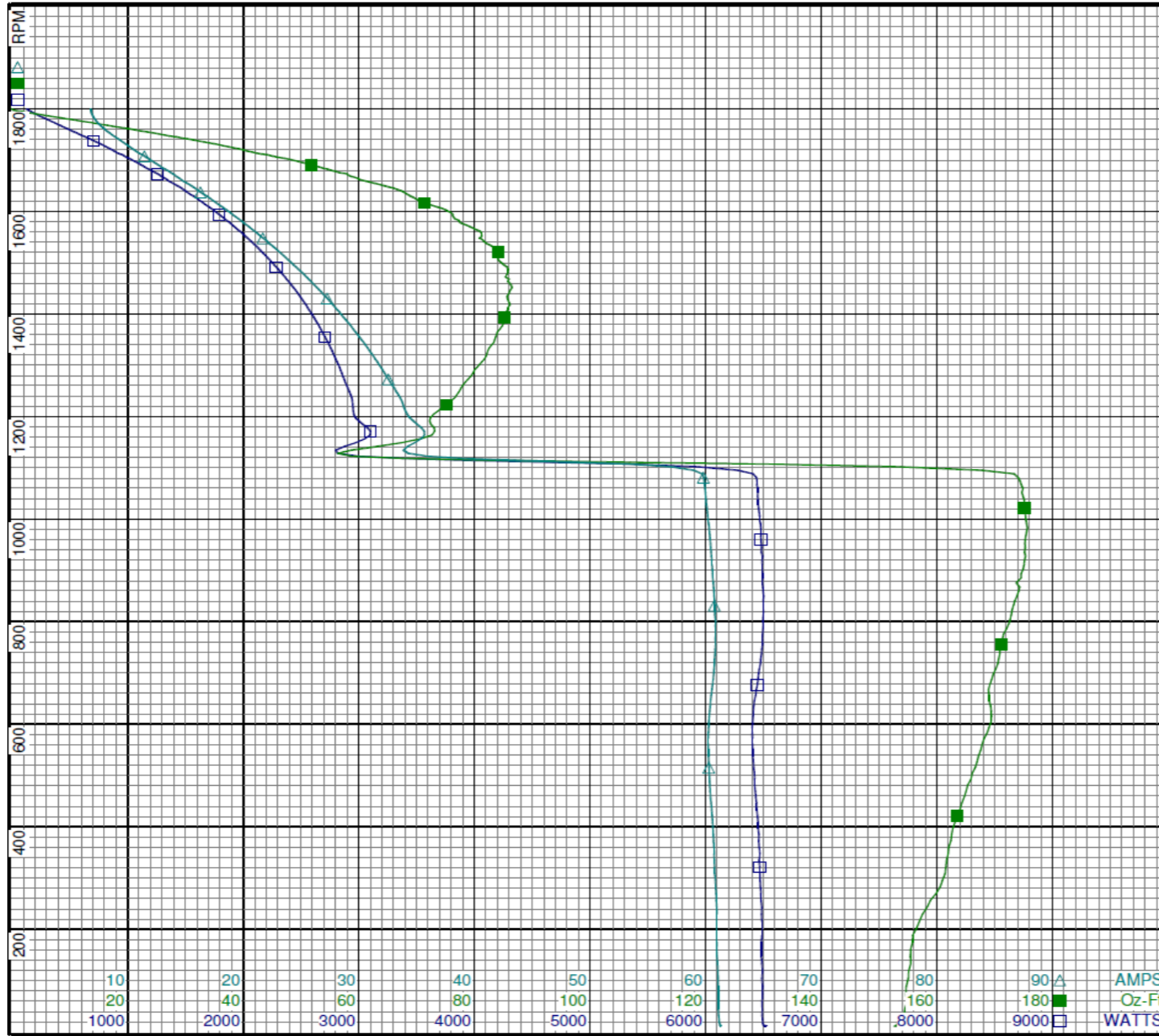
| Special Points | Vline (V) | Iline (A) | Watts | RPM | Tq(Oz-ft) | HP | Eff (%) | PF (%) |
|-------------------|--------------|--------------|-------------|-------------|---------------|--------------|-------------|-------------|
| | 115.0 | 61.24 | 6508 | 12 | 153.68 | 0.023 | 0.3 | 92.4 |
| PUT OZ-FT | 115.0 | 61.28 | 6507 | 11 | 152.64 | 0.021 | 0.2 | 92.3 |
| | 115.0 | 61.07 | 6488 | 44 | 154.41 | 0.081 | 0.9 | 92.4 |
| | 115.0 | 60.95 | 6485 | 188 | 155.78 | 0.349 | 4.0 | 92.5 |
| | 115.0 | 60.76 | 6466 | 322 | 161.54 | 0.618 | 7.1 | 92.5 |
| | 115.0 | 60.45 | 6439 | 445 | 164.26 | 0.871 | 10.1 | 92.6 |
| | 115.0 | 60.20 | 6404 | 561 | 167.81 | 1.120 | 13.0 | 92.5 |
| | 115.0 | 60.53 | 6436 | 667 | 168.90 | 1.341 | 15.5 | 92.5 |
| | 115.0 | 60.84 | 6488 | 766 | 171.31 | 1.562 | 18.0 | 92.7 |
| | 115.0 | 60.70 | 6496 | 858 | 174.06 | 1.778 | 20.4 | 93.1 |
| | 115.0 | 60.43 | 6483 | 944 | 175.23 | 1.969 | 22.7 | 93.3 |
| | 115.0 | 60.10 | 6457 | 1021 | 175.14 | 2.129 | 24.6 | 93.4 |
| | 115.0 | 58.96 | 6277 | 1095 | 167.82 | 2.187 | 26.0 | 92.6 |
| | 115.0 | 34.83 | 2973 | 1149 | 67.45 | 0.922 | 23.1 | 74.2 |
| | 115.0 | 33.90 | 2948 | 1217 | 74.37 | 1.078 | 27.3 | 75.6 |
| | 115.0 | 32.38 | 2861 | 1278 | 79.36 | 1.208 | 31.5 | 76.8 |
| | 115.0 | 30.74 | 2754 | 1334 | 82.56 | 1.311 | 35.5 | 77.9 |
| | 115.0 | 29.01 | 2635 | 1383 | 85.13 | 1.402 | 39.7 | 79.0 |
| | 115.0 | 27.26 | 2502 | 1430 | 85.67 | 1.459 | 43.5 | 79.8 |
| | 115.0 | 25.47 | 2360 | 1471 | 85.35 | 1.495 | 47.2 | 80.6 |
| | 115.0 | 23.68 | 2209 | 1509 | 84.00 | 1.509 | 51.0 | 81.1 |
| | 115.0 | 21.89 | 2053 | 1544 | 81.42 | 1.497 | 54.4 | 81.6 |
| | 115.0 | 20.11 | 1889 | 1576 | 77.79 | 1.460 | 57.6 | 81.7 |
| | 115.0 | 18.37 | 1722 | 1605 | 74.39 | 1.422 | 61.6 | 81.5 |
| | 115.0 | 16.65 | 1549 | 1632 | 68.57 | 1.332 | 64.2 | 80.9 |
| | 115.0 | 14.98 | 1374 | 1657 | 61.92 | 1.221 | 66.3 | 79.7 |
| | 115.0 | 13.41 | 1200 | 1680 | 55.20 | 1.104 | 68.6 | 77.8 |
| | 115.0 | 11.92 | 1030 | 1701 | 48.05 | 0.973 | 70.4 | 75.2 |
| | 115.0 | 10.42 | 848 | 1721 | 39.32 | 0.806 | 70.9 | 70.8 |
| 1725 RPM | 115.0 | 10.18 | 816 | 1725 | 37.58 | 0.772 | 70.5 | 69.7 |
| 36.5 OZ-FT | 115.0 | 10.02 | 796 | 1728 | 36.50 | 0.751 | 70.4 | 69.0 |
| 0.75 HP | 115.0 | 10.02 | 795 | 1728 | 36.47 | 0.750 | 70.4 | 69.0 |
| | 115.0 | 9.17 | 672 | 1741 | 30.30 | 0.628 | 69.7 | 63.7 |
| | 115.0 | 7.99 | 482 | 1760 | 20.38 | 0.427 | 66.1 | 52.5 |
| | 115.0 | 7.18 | 304 | 1779 | 10.28 | 0.218 | 53.4 | 36.9 |
| | 115.0 | 6.79 | 138 | 1797 | 0.11 | 0.002 | 1.3 | 17.6 |
| | 115.0 | 6.78 | 126 | 1799 | 0.00 | 0.000 | 0.0 | 16.1 |

DRAWING NO. PAGE 1 of 8 REV.
3K996BG -

Performance Data



3K996BG REV. -



Dayton

Curve Descriptions:
Motor(1) Test 5 Start 115V 60 Hz 4P

- SPEED vs WATTS
- SPEED vs TORQUE
- △ SPEED vs ILine

Motor Ratings:
(1) C063GJH1306 3K996BG

DRAWING NO. PAGE 2 of 8 REV. -
3K996BG

Dayton Electric Mfg. Co. Lake Forest, IL 60045 USA

Performance Data

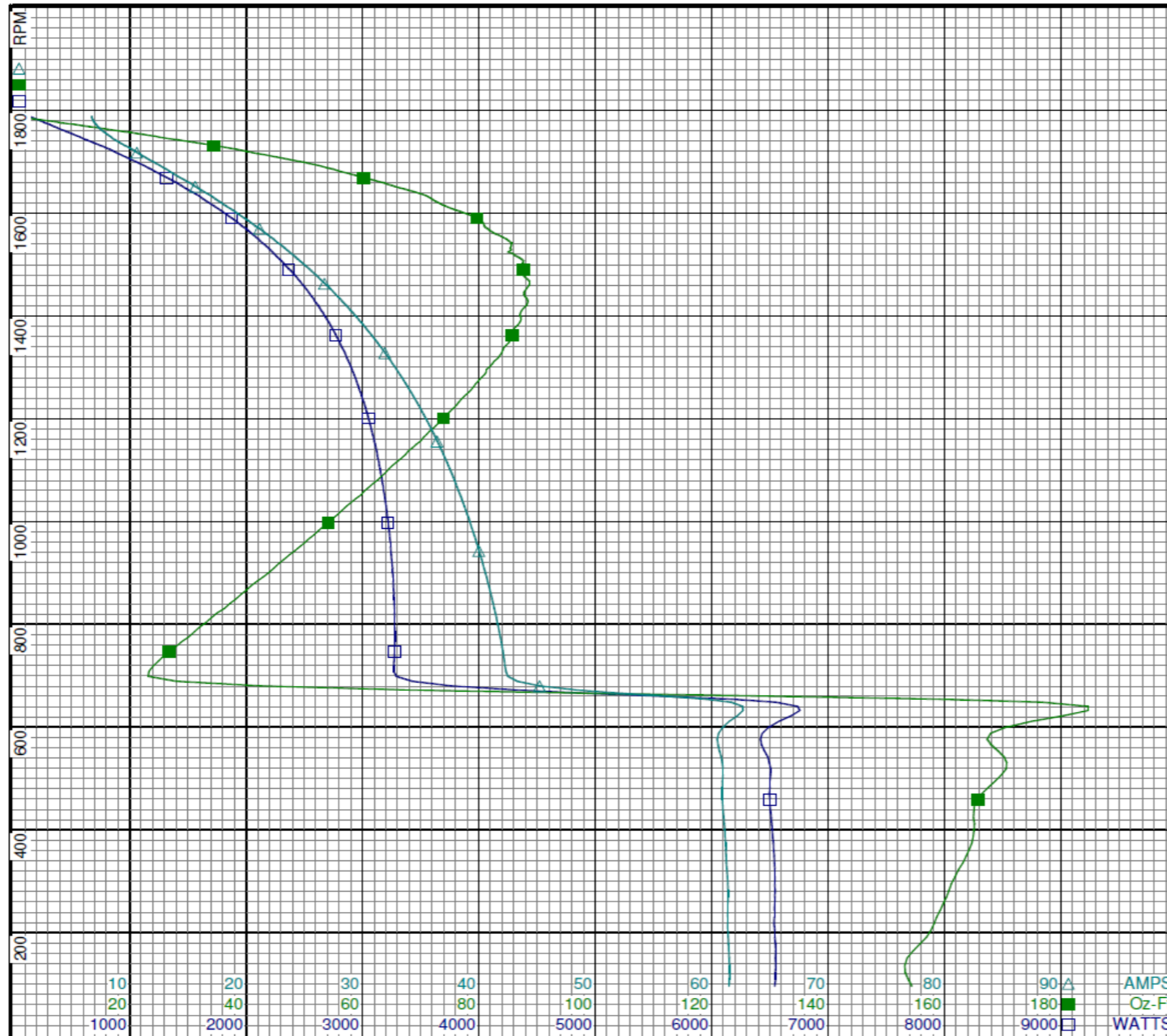


| 3K996BG | | REV. |
|-------------------------------------|------------------|---|
| Dayton Manufacturing Company | | |
| Motor Description | | Test Conditions |
| Model: | C063GJH1306 | 3K996BG |
| Motor ID: | 1 | Test Type: Run |
| Poles: | 4 | Test Number: 9 |
| Volts: | 115/230 | Poles: 4 |
| Frequency: | 60/50 | Volts: 115 |
| HP: | 3/4 | Hz: 60 |
| Speed: | 1725/1425 | Rotation: |
| Phase: | 1 | Special Cond: |
| Protector: | CED3723 | Speed Conn: |
| | | TestBoard: Amtps Performance Fixture #1 |
| | | Run Cap: 0 |
| | | Start Cap: 677 µFd |
| | | Environment: |
| | | Tested: 2/8/2003 2:03:39 PM |
| | | Tested By: Sharp, Gerald |
| | | Gear Ratio: 1:1 |
| | | Bearing Friction: -0.66 Oz-Ft |
| | | Windage Torque: -1.45 Oz-Ft |
| Special Points | Vline (V) | Iline (A) |
| | 115.0 | 6.71 |
| | 115.0 | 7.18 |
| | 115.0 | 8.17 |
| | 115.0 | 9.74 |
| 36.5 OZ-FT | 115.0 | 9.91 |
| 0.75 HP | 115.0 | 9.90 |
| 1725 RPM | 115.0 | 10.07 |
| | 115.0 | 11.24 |
| | 115.0 | 12.94 |
| | 115.0 | 14.74 |
| | 115.0 | 16.58 |
| | 115.0 | 18.45 |
| | 115.0 | 20.41 |
| | 115.0 | 22.32 |
| | 115.0 | 24.25 |
| | 115.0 | 26.17 |
| BDT OZ-FT | 115.0 | 26.56 |
| | 115.0 | 28.04 |
| | 115.0 | 29.86 |
| | 115.0 | 31.59 |
| | 115.0 | 33.25 |
| | 115.0 | 34.80 |
| | 115.0 | 36.26 |
| | 115.0 | 37.62 |
| | 115.0 | 38.86 |
| | 115.0 | 40.00 |
| | 115.0 | 41.03 |
| | 115.0 | 41.90 |
| | 115.0 | 48.40 |
| | 115.0 | 60.57 |
| | 115.0 | 60.88 |
| | 115.0 | 61.22 |
| | 115.0 | 61.37 |
| | | Watts |
| | | 129 |
| | | 332 |
| | | 535 |
| | | 769 |
| | | 790 |
| | | 790 |
| | | 810 |
| | | 959 |
| | | 1161 |
| | | 1362 |
| | | 1553 |
| | | 1739 |
| | | 1927 |
| | | 2103 |
| | | 2271 |
| | | 2432 |
| | | 2464 |
| | | 2576 |
| | | 2709 |
| | | 2823 |
| | | 2929 |
| | | 3018 |
| | | 3094 |
| | | 3154 |
| | | 3206 |
| | | 3243 |
| | | 3268 |
| | | 3275 |
| | | 4328 |
| | | 6432 |
| | | 6494 |
| | | 6535 |
| | | 6534 |
| | | RPM |
| | | 1788 |
| | | 1770 |
| | | 1751 |
| | | 1729 |
| | | 1727 |
| | | 1727 |
| | | 1725 |
| | | 1709 |
| | | 1687 |
| | | 1663 |
| | | 1638 |
| | | 1611 |
| | | 1581 |
| | | 1549 |
| | | 1514 |
| | | 1475 |
| | | 1467 |
| | | 1433 |
| | | 1387 |
| | | 1338 |
| | | 1284 |
| | | 1226 |
| | | 1162 |
| | | 1094 |
| | | 1021 |
| | | 942 |
| | | 857 |
| | | 766 |
| | | 672 |
| | | 588 |
| | | 471 |
| | | 349 |
| | | 218 |
| | | Tq (Oz-ft) |
| | | 0.00 |
| | | 11.78 |
| | | 23.27 |
| | | 35.39 |
| | | 36.50 |
| | | 36.47 |
| | | 37.50 |
| | | 44.91 |
| | | 54.00 |
| | | 61.94 |
| | | 69.58 |
| | | 74.72 |
| | | 80.63 |
| | | 84.64 |
| | | 86.78 |
| | | 87.86 |
| | | 88.68 |
| | | 88.19 |
| | | 87.00 |
| | | 84.23 |
| | | 80.80 |
| | | 76.10 |
| | | 70.38 |
| | | 63.90 |
| | | 56.47 |
| | | 48.33 |
| | | 39.08 |
| | | 28.93 |
| | | 68.00 |
| | | 167.86 |
| | | 166.49 |
| | | 163.71 |
| | | 158.18 |
| | | HP |
| | | 0.000 |
| | | 0.248 |
| | | 0.485 |
| | | 0.729 |
| | | 0.751 |
| | | 0.750 |
| | | 0.770 |
| | | 0.914 |
| | | 1.085 |
| | | 1.227 |
| | | 1.357 |
| | | 1.433 |
| | | 1.517 |
| | | 1.561 |
| | | 1.564 |
| | | 1.543 |
| | | 1.549 |
| | | 1.505 |
| | | 1.437 |
| | | 1.341 |
| | | 1.235 |
| | | 1.110 |
| | | 0.974 |
| | | 0.833 |
| | | 0.687 |
| | | 0.542 |
| | | 0.399 |
| | | 0.264 |
| | | 0.544 |
| | | 1.175 |
| | | 0.934 |
| | | 0.681 |
| | | 0.410 |
| | | Eff (%) |
| | | 0.0 |
| | | 55.7 |
| | | 67.6 |
| | | 70.7 |
| | | 70.9 |
| | | 70.9 |
| | | 70.9 |
| | | 71.1 |
| | | 69.7 |
| | | 67.2 |
| | | 65.2 |
| | | 61.5 |
| | | 58.7 |
| | | 55.4 |
| | | 51.4 |
| | | 47.3 |
| | | 46.9 |
| | | 43.6 |
| | | 39.6 |
| | | 35.4 |
| | | 31.5 |
| | | 27.4 |
| | | 23.5 |
| | | 19.7 |
| | | 16.0 |
| | | 12.5 |
| | | 9.1 |
| | | 6.0 |
| | | 9.4 |
| | | 13.6 |
| | | 10.7 |
| | | 7.8 |
| | | 4.7 |
| | | PF (%) |
| | | 16.7 |
| | | 40.2 |
| | | 56.9 |
| | | 68.6 |
| | | 69.4 |
| | | 69.3 |
| | | 70.0 |
| | | 74.2 |
| | | 78.0 |
| | | 80.4 |
| | | 81.5 |
| | | 82.0 |
| | | 82.1 |
| | | 81.9 |
| | | 81.4 |
| | | 80.8 |
| | | 80.7 |
| | | 79.9 |
| | | 78.9 |
| | | 77.7 |
| | | 76.6 |
| | | 75.4 |
| | | 74.2 |
| | | 72.9 |
| | | 71.7 |
| | | 70.5 |
| | | 69.3 |
| | | 68.0 |
| | | 77.8 |
| | | 92.3 |
| | | 92.8 |
| | | 92.8 |
| | | 92.6 |
| DRAWING NO. | | PAGE 3 of 8 |
| 3K996BG | | REV. |
| - | | - |

Performance Data



3K996BG REV. -



Dayton

Curve Descriptions:
Motor(1) Test 9 Run 115V 60 Hz 4P

- SPEED vs WATTS
- SPEED vs TORQUE
- △ SPEED vs ILine

Motor Ratings:
(1) C063GJH1306 3K996BG

DRAWING NO. PAGE 4 of 8 REV.
3K996BG -

Dayton Electric Mfg. Co. Lake Forest, IL 60045 USA

Performance Data



3K996BG REV.
-

Dayton Manufacturing Company

Motor Description

Model: C063GJH1306 3K996BG
 Motor ID: 1
 Poles: 4
 Volts: 115/230
 Frequency: 60/50
 HP: 3/4
 Speed: 1725/1425
 Phase: 1
 Protector: CED3723

Test Conditions

Test Type: Start Run Cap: 0
 Test Number: 7 Start Cap: 677 µFd
 Poles: 4 Environment:
 Volts: 230 Tested: 2/8/2003 12:18:13 PM
 Hz: 60 Tested By: Sharp, Gerald
 Rotation:
 Special Cond: Gear Ratio: 1:1
 Speed Conn: Bearing Friction: -0.60 Oz-Ft
 TestBoard: Windage Torque: -1.39 Oz-Ft
 Amps Performance Fixture #1

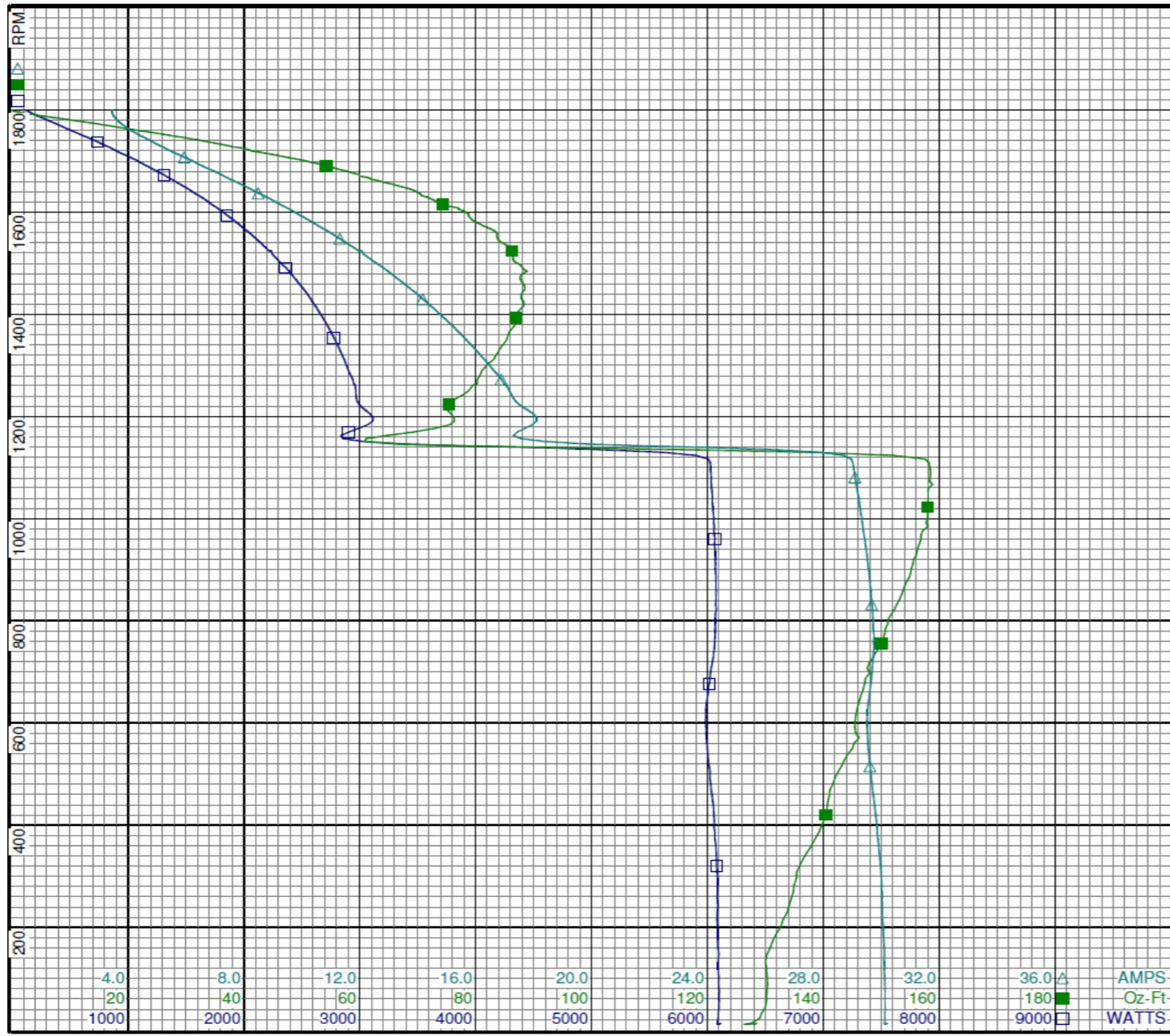
| Special Points | Vline (V) | Iline (A) | Watts | RPM | Tq (Oz-ft) | HP | Eff (%) | PF (%) |
|----------------|-----------|-----------|-------|------|------------|-------|---------|--------|
| | 230.0 | 30.19 | 6108 | 11 | 128.34 | 0.017 | 0.2 | 88.0 |
| PUT OZ-FT | 230.0 | 30.12 | 6089 | 10 | 126.30 | 0.015 | 0.2 | 87.9 |
| | 230.0 | 30.12 | 6097 | 43 | 129.93 | 0.067 | 0.8 | 88.0 |
| | 230.0 | 30.07 | 6085 | 187 | 131.85 | 0.294 | 3.6 | 88.0 |
| | 230.0 | 29.97 | 6078 | 321 | 135.91 | 0.520 | 6.4 | 88.2 |
| | 230.0 | 29.74 | 6044 | 445 | 140.74 | 0.746 | 9.2 | 88.4 |
| | 230.0 | 29.54 | 5994 | 560 | 145.26 | 0.969 | 12.1 | 88.2 |
| | 230.0 | 29.60 | 6005 | 666 | 146.87 | 1.165 | 14.5 | 88.2 |
| | 230.0 | 29.73 | 6062 | 766 | 150.33 | 1.370 | 16.9 | 88.7 |
| | 230.0 | 29.63 | 6073 | 859 | 153.71 | 1.571 | 19.3 | 89.1 |
| | 230.0 | 29.46 | 6061 | 944 | 156.29 | 1.757 | 21.6 | 89.5 |
| | 230.0 | 29.25 | 6044 | 1023 | 157.93 | 1.924 | 23.7 | 89.8 |
| | 230.0 | 29.04 | 6024 | 1096 | 158.39 | 2.066 | 25.6 | 90.2 |
| | 230.0 | 18.39 | 3025 | 1151 | 60.86 | 0.834 | 20.6 | 71.5 |
| | 230.0 | 17.63 | 3017 | 1218 | 75.09 | 1.089 | 26.9 | 74.4 |
| | 230.0 | 16.79 | 2925 | 1278 | 80.64 | 1.227 | 31.3 | 75.7 |
| | 230.0 | 15.94 | 2819 | 1334 | 84.26 | 1.338 | 35.4 | 76.9 |
| | 230.0 | 15.06 | 2703 | 1384 | 86.95 | 1.432 | 39.5 | 78.0 |
| | 230.0 | 14.17 | 2576 | 1430 | 87.90 | 1.496 | 43.3 | 79.0 |
| | 230.0 | 13.25 | 2434 | 1471 | 87.61 | 1.535 | 47.0 | 79.9 |
| | 230.0 | 12.32 | 2277 | 1510 | 86.39 | 1.552 | 50.9 | 80.4 |
| | 230.0 | 11.41 | 2122 | 1544 | 83.98 | 1.544 | 54.3 | 80.9 |
| | 230.0 | 10.48 | 1956 | 1576 | 80.76 | 1.515 | 57.8 | 81.2 |
| | 230.0 | 9.57 | 1785 | 1605 | 77.08 | 1.473 | 61.5 | 81.1 |
| | 230.0 | 8.69 | 1612 | 1632 | 70.54 | 1.370 | 63.4 | 80.7 |
| | 230.0 | 7.81 | 1430 | 1657 | 64.74 | 1.277 | 66.6 | 79.6 |
| | 230.0 | 6.97 | 1249 | 1680 | 57.69 | 1.154 | 68.9 | 77.9 |
| | 230.0 | 6.18 | 1073 | 1701 | 50.15 | 1.016 | 70.6 | 75.5 |
| | 230.0 | 5.40 | 886 | 1721 | 41.08 | 0.842 | 70.9 | 71.3 |
| 1725 RPM | 230.0 | 5.27 | 852 | 1725 | 39.52 | 0.812 | 71.1 | 70.3 |
| 36.5 OZ-FT | 230.0 | 5.04 | 791 | 1731 | 36.50 | 0.752 | 71.0 | 68.2 |
| 0.75 HP | 230.0 | 5.03 | 788 | 1732 | 36.38 | 0.750 | 71.0 | 68.1 |
| | 230.0 | 4.72 | 700 | 1741 | 32.13 | 0.666 | 71.0 | 64.5 |
| | 230.0 | 4.11 | 511 | 1759 | 21.86 | 0.458 | 66.8 | 54.0 |
| | 230.0 | 3.65 | 318 | 1778 | 11.02 | 0.233 | 54.8 | 37.8 |
| | 230.0 | 3.44 | 136 | 1797 | 0.19 | 0.004 | 2.2 | 17.2 |
| | 230.0 | 3.43 | 119 | 1799 | 0.00 | 0.000 | 0.0 | 15.1 |

DRAWING NO. PAGE 5 of 8 REV.
 3K996BG -

Performance Data



3K996BG REV. -



Dayton

Curve Descriptions:
Motor(1) Test 7 Start 230V 60 Hz 4P

- SPEED vs WATTS
- SPEED vs TORQUE
- △ SPEED vs ILine

Motor Ratings:
(1) C063GJH1306 3K996BG

| | | |
|----------------|-------------|------|
| DRAWING NO. | PAGE 6 of 8 | REV. |
| 3K996BG | | - |

Dayton Electric Mfg. Co. Lake Forest, IL 60045 USA

Performance Data



| | |
|----------------|-----------|
| 3K996BG | REV. - |
|----------------|-----------|

Dayton Manufacturing Company

Motor Description

Model: C063GJH1306 3K996BG
 Motor ID: 1
 Poles: 4
 Volts: 115/230
 Frequency: 60/50
 HP: 3/4
 Speed: 1725/1425
 Phase: 1
 Protector: CED3723

Test Conditions

Test Type: Run
 Test Number: 11
 Poles: 4
 Volts: 230
 Hz: 60
 Rotation:
 Special Cond:
 Speed Conn:
 TestBoard: Amtps Performance Fixture #1
 Run Cap: 0
 Start Cap: 677 µFd
 Environment:
 Tested: 2/8/2003 12:39:33 PM
 Tested By: Sharp, Gerald
 Gear Ratio: 1:1
 Bearing Friction: -0.64 Oz-Ft
 Windage Torque: -1.46 Oz-Ft

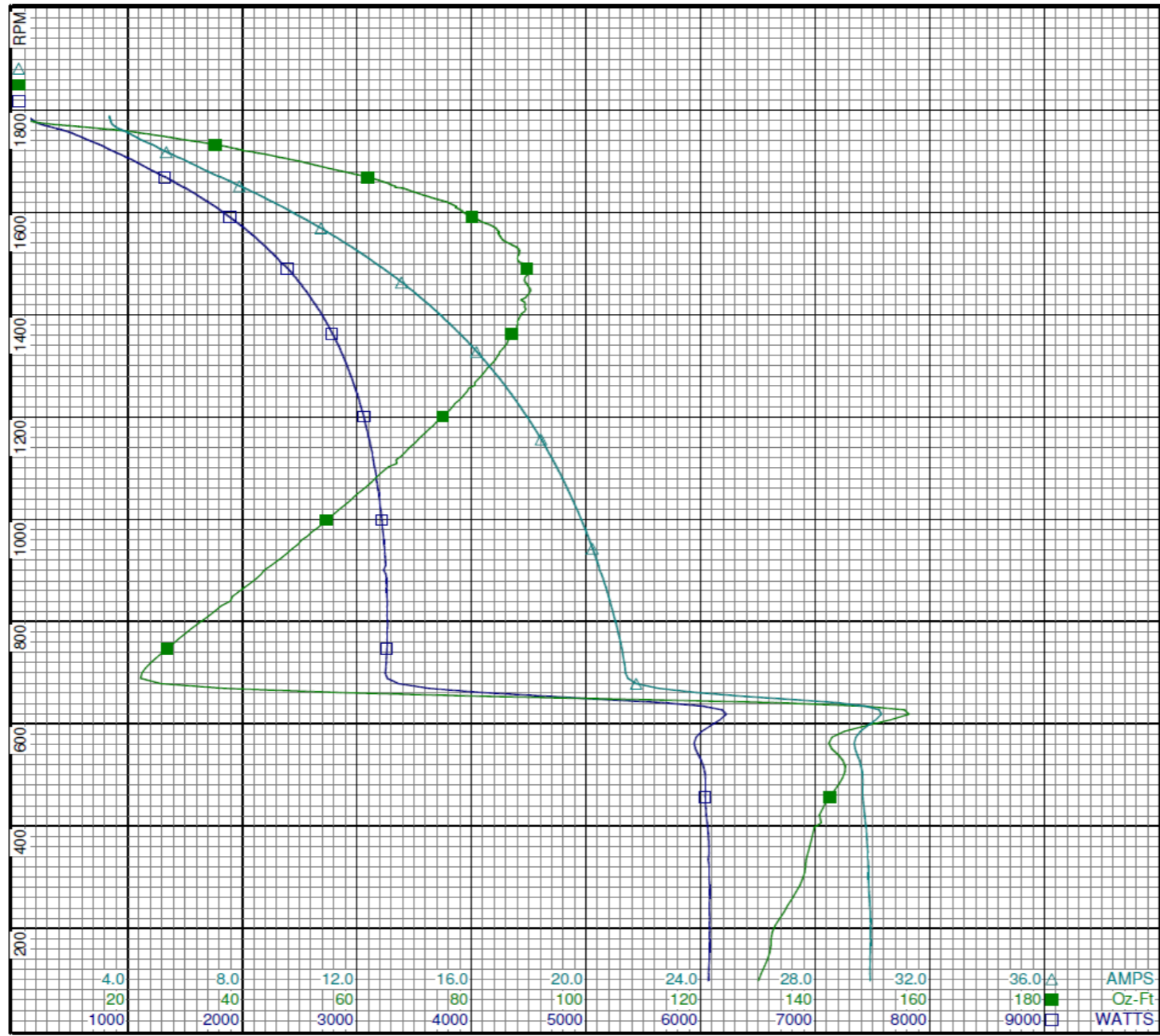
| Special Points | Vline (V) | Iline (A) | Watts | RPM | Tq(Oz-ft) | HP | Eff (%) | PF (%) |
|-------------------|--------------|--------------|-------------|-------------|--------------|--------------|-------------|-------------|
| | 230.0 | 3.35 | 115 | 1788 | 0.00 | 0.000 | 0.0 | 14.9 |
| | 230.0 | 3.51 | 283 | 1769 | 9.68 | 0.204 | 53.7 | 35.1 |
| | 230.0 | 4.16 | 553 | 1751 | 24.75 | 0.516 | 69.6 | 57.8 |
| | 230.0 | 4.92 | 773 | 1730 | 36.26 | 0.747 | 72.1 | 68.3 |
| 36.5 OZ-FT | 230.0 | 4.94 | 778 | 1730 | 36.50 | 0.752 | 72.1 | 68.4 |
| 0.75 HP | 230.0 | 4.93 | 776 | 1730 | 36.42 | 0.750 | 72.1 | 68.4 |
| 1725 RPM | 230.0 | 5.09 | 817 | 1725 | 38.45 | 0.790 | 72.1 | 69.8 |
| | 230.0 | 5.67 | 968 | 1709 | 45.69 | 0.930 | 71.7 | 74.2 |
| | 230.0 | 6.51 | 1160 | 1688 | 54.38 | 1.092 | 70.3 | 77.5 |
| | 230.0 | 7.43 | 1366 | 1664 | 63.41 | 1.256 | 68.6 | 79.9 |
| | 230.0 | 8.40 | 1569 | 1638 | 70.28 | 1.371 | 65.2 | 81.2 |
| | 230.0 | 9.37 | 1761 | 1611 | 77.31 | 1.483 | 62.8 | 81.7 |
| | 230.0 | 10.34 | 1942 | 1581 | 81.71 | 1.538 | 59.1 | 81.6 |
| | 230.0 | 11.33 | 2122 | 1549 | 85.19 | 1.571 | 55.2 | 81.4 |
| | 230.0 | 12.31 | 2290 | 1514 | 88.06 | 1.587 | 51.7 | 80.9 |
| | 230.0 | 13.28 | 2451 | 1475 | 89.51 | 1.572 | 47.8 | 80.3 |
| BDT OZ-FT | 230.0 | 13.94 | 2553 | 1446 | 90.26 | 1.554 | 45.4 | 79.7 |
| | 230.0 | 14.22 | 2596 | 1433 | 89.42 | 1.525 | 43.8 | 79.4 |
| | 230.0 | 15.13 | 2726 | 1387 | 88.06 | 1.454 | 39.8 | 78.3 |
| | 230.0 | 16.01 | 2841 | 1338 | 85.80 | 1.367 | 35.9 | 77.2 |
| | 230.0 | 16.84 | 2940 | 1284 | 81.96 | 1.252 | 31.8 | 75.9 |
| | 230.0 | 17.62 | 3025 | 1226 | 77.11 | 1.125 | 27.7 | 74.7 |
| | 230.0 | 18.35 | 3097 | 1163 | 71.30 | 0.987 | 23.8 | 73.4 |
| | 230.0 | 19.03 | 3160 | 1095 | 64.65 | 0.843 | 19.9 | 72.2 |
| | 230.0 | 19.65 | 3203 | 1022 | 57.19 | 0.696 | 16.2 | 70.9 |
| | 230.0 | 20.22 | 3241 | 942 | 48.76 | 0.547 | 12.6 | 69.7 |
| | 230.0 | 20.73 | 3260 | 857 | 39.31 | 0.401 | 9.2 | 68.4 |
| | 230.0 | 21.17 | 3264 | 766 | 28.91 | 0.264 | 6.0 | 67.0 |
| | 230.0 | 22.54 | 3633 | 669 | 36.93 | 0.294 | 6.0 | 70.1 |
| | 230.0 | 29.57 | 6009 | 585 | 145.07 | 1.011 | 12.5 | 88.4 |
| | 230.0 | 29.65 | 6041 | 469 | 143.31 | 0.801 | 9.9 | 88.6 |
| | 230.0 | 29.83 | 6072 | 348 | 138.68 | 0.574 | 7.1 | 88.5 |
| | 230.0 | 29.92 | 6077 | 219 | 133.75 | 0.349 | 4.3 | 88.3 |

| | | |
|-------------|----------------|------|
| DRAWING NO. | PAGE 7 of 8 | REV. |
| | 3K996BG | - |

Performance Data



3K996BG REV. -



Dayton

Curve Descriptions:
Motor(1) Test 11 Run 230V 60 Hz 4P

- SPEED vs WATTS
- SPEED vs TORQUE
- △ SPEED vs ILine

Motor Ratings:
(1) C063GJH1306 3K996BG

DRAWING NO. PAGE 8 of 8 REV. -
3K996BG

Dayton Electric Mfg. Co. Lake Forest, IL 60045 USA

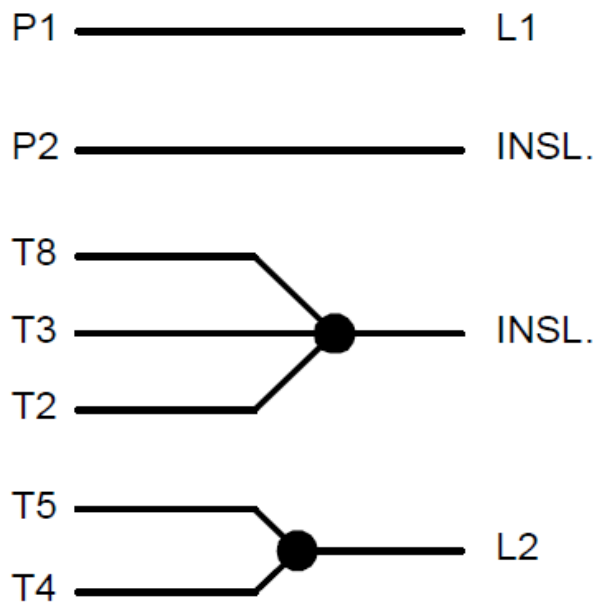
©2019 W.W. Grainger, Inc. This design may not be reproduced, modified or redistributed without written permission from W.W. Grainger, Inc.

3K996BG

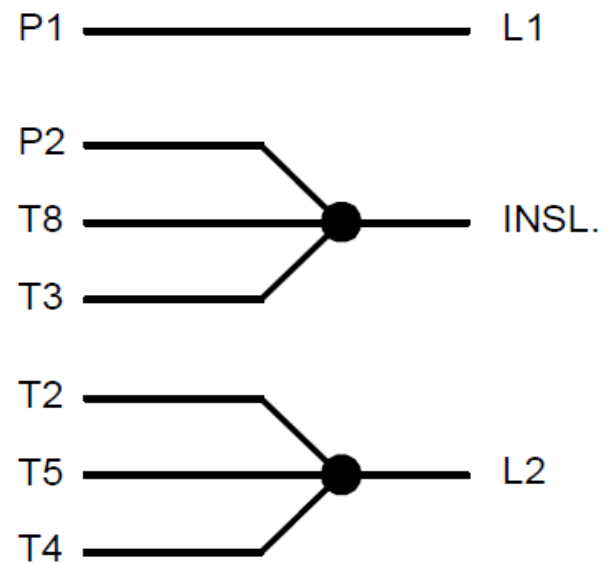
REV.
0

CONNECTION INFORMATION

HIGH VOLTAGE



LOW VOLTAGE



ROTATION: CCW L.E.
TO REVERSE ROTATION: INTERCHANGE
LEADS T5 AND T8

| | | |
|-------------|-------------|------|
| DRAWING NO. | PAGE 1 of 1 | REV. |
| 3K996BG | | 0 |

Dayton[®]**AUGER DRIVE MOTOR**

HP: 3/4

VOLTS: 115/230

AMPS: 10.6/5.3

RPM: 1425/1725

DUTY: CONT

SF: 1.0

KVA CODE: L

ENCL: TEFC

THERMALLY PROTECTED: MANUAL

MFG. NO. PROT. CODE: AVG. F.L.
EFF.

MTR REF: C63BXGJH-1306

FOR 50 HZ FLA 11.8/5.9 & SFA 11.8/5.9

[BAR CODE]Part
No 3K996BG

PH: 1

HZ: 50/60

FR: 56YZ

INS CL: B

AMB: 40 °C

SFA: 10.6/5.3

**Disconnect Power Before Making Any
Electrical Connections or Changes**CONNECTION INFORMATIONHIGH VOLTAGELOW VOLTAGE

P1 ——— L1

P1 ——— L1

P2 ——— INSL.

P2 ——— INSL.

T8 ——— INSL.

T8 ——— INSL.

T3 ——— INSL.

T3 ——— INSL.

T2 ——— INSL.

T2 ——— INSL.

T5 ——— L2

T5 ——— L2

T4 ——— L2

T4 ——— L2

ROTATION: CCW L.E.
TO REVERSE ROTATION: INTERCHANGE
LEADS T5 AND T8

E37403



258501

Mfd for Dayton Electric Mfg. Co., Lake Forest, IL 60045 USA

Made in Mexico