

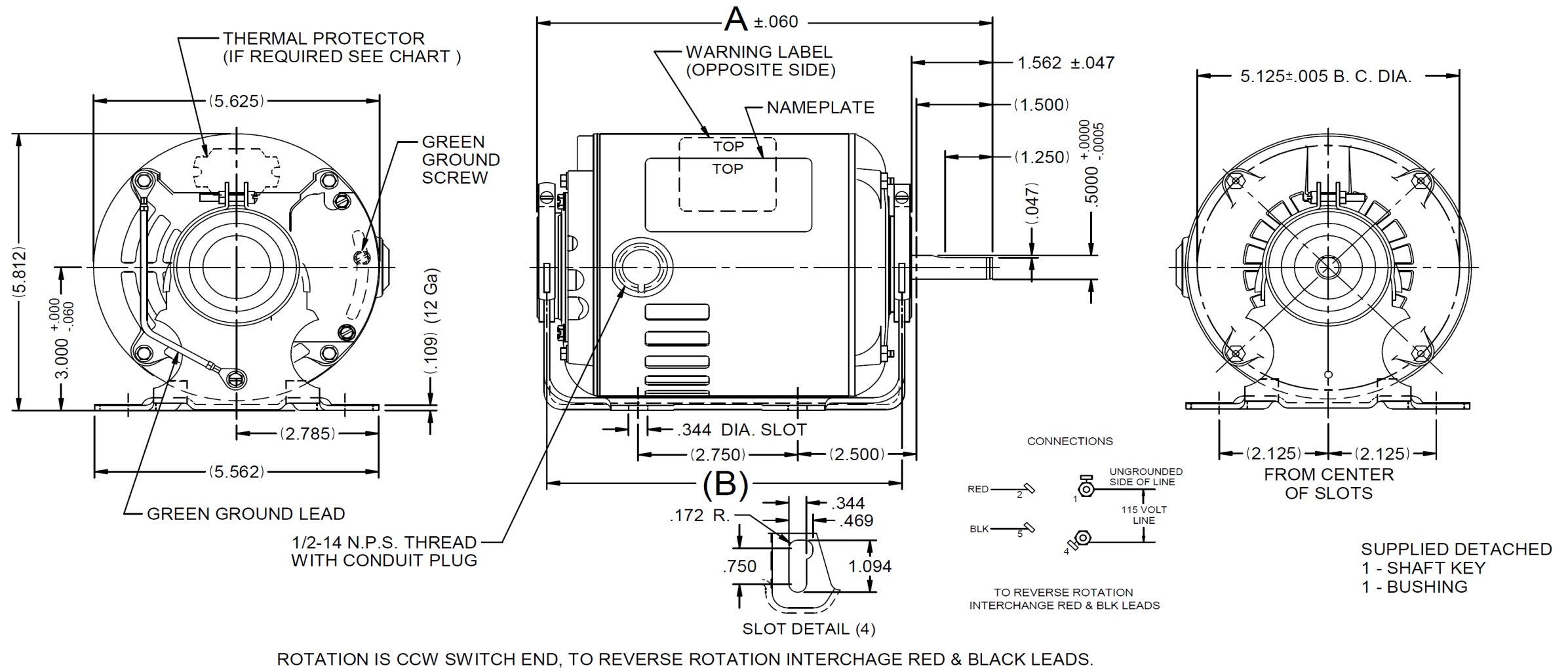
Dimensional Drawing



3K772BG

REV.
-

VAR	MODEL	CUST. PT. NO.	A	B	C	D	HP	VOLTS	SF	AMPS	HZ	RPM	CONN VOLTS	PROT.	DESCRIPTION / REMARKS
001	S55JXSFC-8462	3K772BG	9.933	7.578	--	--	1/2	115	1.25	8.0	60	1725	---	AUTO	48, ODP, AUTO



DRAWING NO.	PAGE 1 of 1	REV.
	3K772BG	-

Dayton Electric Mfg. Co. Lake Forest, IL 60045 USA

Performance Data



3K772BG

REV.
-

SPLIT-PHASE & CAPACITOR START MOTOR PERFORMANCE

HP:	1/2							
Poles:	4							
Ambient (°C):	40							
Altitude (FASL):								
No. of Speeds:	1							
Volts:	115	115						
HZ:	60	60						
Service Factor:	1.25							
Efficiency:	@ Rated Load	50.3						
Power Factor:	@ Rated Load	70.7						
Amps:	@ No Load							
	@ Rated Load	9.1						
	@ Service Factor	10.1						
	@ Locked Rotor		43.4					
RPM:	@ Rated Load		1716					
Torques:	Breakdown	48.3						
	Locked Rotor	27.6						
	Pull-Up	21.1						
	Rated Load	24.3						
	Service Factor	30.4						
Watts:	Rated Load	736						
KVA Code:	L	L						
Temperature Rise:	@ Rated Load	60.6						
	@ Service Factor	65.6						
Thermal Protector:	Trip Temp (°C)	127						
Winding Material:	Start (Auxiliary)	Cu						
	Run (Main)	Al						
Capacitor(s):	Start (MFD / Volts)		NA					
	No. of Start Capacitors							
	Run (MFD / Volts)		NA					
	No. of Run Capacitors							
LOW SPEED PERFORMANCE DATA:								
HP:								
Poles:								
Volts:								
HZ:								
Efficiency:	@ Rated Load							
Power Factor:	@ Rated Load							
Amps:	@ No Load							
	@ Rated Load							
	@ Service Factor							
	@ Locked Rotor							
Torques:	BreakDown							
	Locked Rotor							
	Pull-Up							
	Rated Load							
	Service Factor							
Watts:	@ Rated Load							
Temperature Rise:	@ Rated Load							
	@ Service Factor							

DRAWING NO. PAGE 1 of 1 REV.
3K772BG -

Dayton Electric Mfg. Co. Lake Forest, IL 60045 USA

Performance Data



3K772BG REV.
-

Dayton Manufacturing Company

Motor Description

Model: S055SFC8462 3K772BG
 Motor ID: CAT 8200
 Poles: 4
 Volts: 115
 Frequency: 60
 HP: 1/2
 Speed: 1725
 Phase: 1
 Protector: 20MAO6PF

Test Conditions

Test Type: Start Run Cap: 0
 Test Number: 2 Start Cap: 0µfd
 Poles: 4 Environment:
 Volts: 115 Tested: 9/9/2010 2:51:40 PM
 Hz: 60 Tested By: Sharp, Gerald
 Rotation: Gear Ratio: 1:1
 Special Cond: 2 line start Bearing Friction: -1.69 Oz-Ft
 Speed Conn: Windage Torque: -5.77 Oz-Ft
 TestBoard: Aamps Performance Fixture #3

Special Points	Vline(V)	Iline(A)	Watts	RPM	Tq(Oz-ft)	HP	Eff(%)	PF(%)
	115.0	43.43	4055	0	27.61	0.000	0.0	81.2
	115.0	43.35	4048	23	27.42	0.007	0.1	81.2
	115.0	43.22	4028	152	23.41	0.042	0.8	81.0
PUT OZ-FT	115.0	43.17	4028	211	21.13	0.053	1.0	81.1
	115.0	43.04	4022	294	23.62	0.083	1.5	81.3
	115.0	42.74	4000	429	28.67	0.146	2.7	81.4
	115.0	42.38	3976	549	31.76	0.208	3.9	81.6
	115.0	42.00	3954	659	32.49	0.255	4.8	81.8
	115.0	41.49	3924	759	34.35	0.311	5.9	82.2
	115.0	40.91	3883	852	35.73	0.362	7.0	82.5
	115.0	40.25	3839	938	36.97	0.413	8.0	82.9
	115.0	39.58	3790	1017	38.30	0.463	9.1	83.3
	115.0	38.87	3740	1090	39.75	0.516	10.3	83.7
	115.0	38.13	3682	1157	41.17	0.567	11.5	84.0
	115.0	37.35	3619	1220	41.87	0.608	12.5	84.3
	115.0	36.54	3552	1277	41.93	0.637	13.4	84.5
	115.0	35.71	3483	1329	41.75	0.660	14.1	84.8
	115.0	34.86	3410	1378	41.04	0.673	14.7	85.1
	115.0	34.02	3333	1421	39.73	0.672	15.0	85.2
	115.0	33.17	3253	1462	38.14	0.664	15.2	85.3
	115.0	32.32	3174	1499	35.70	0.637	15.0	85.4
	115.0	18.71	1773	1535	44.05	0.805	33.9	82.4
	115.0	16.05	1530	1569	45.94	0.858	41.8	82.9
	115.0	14.74	1401	1598	45.02	0.856	45.6	82.7
	115.0	13.66	1290	1623	42.47	0.820	47.4	82.2
	115.0	12.54	1166	1647	39.39	0.772	49.4	80.9
	115.0	11.45	1041	1670	35.72	0.710	50.9	79.1
	115.0	10.45	926	1690	31.92	0.642	51.7	77.0
	115.0	9.46	788	1710	26.59	0.541	51.2	72.5
	115.0	8.66	667	1730	21.19	0.436	48.8	67.0
	115.0	7.83	524	1747	14.28	0.297	42.3	58.2
	115.0	7.24	400	1766	7.83	0.165	30.7	48.0
	115.0	7.01	272	1783	0.21	0.004	1.2	33.8
	115.0	7.00	259	1785	0.00	0.000	0.0	32.2

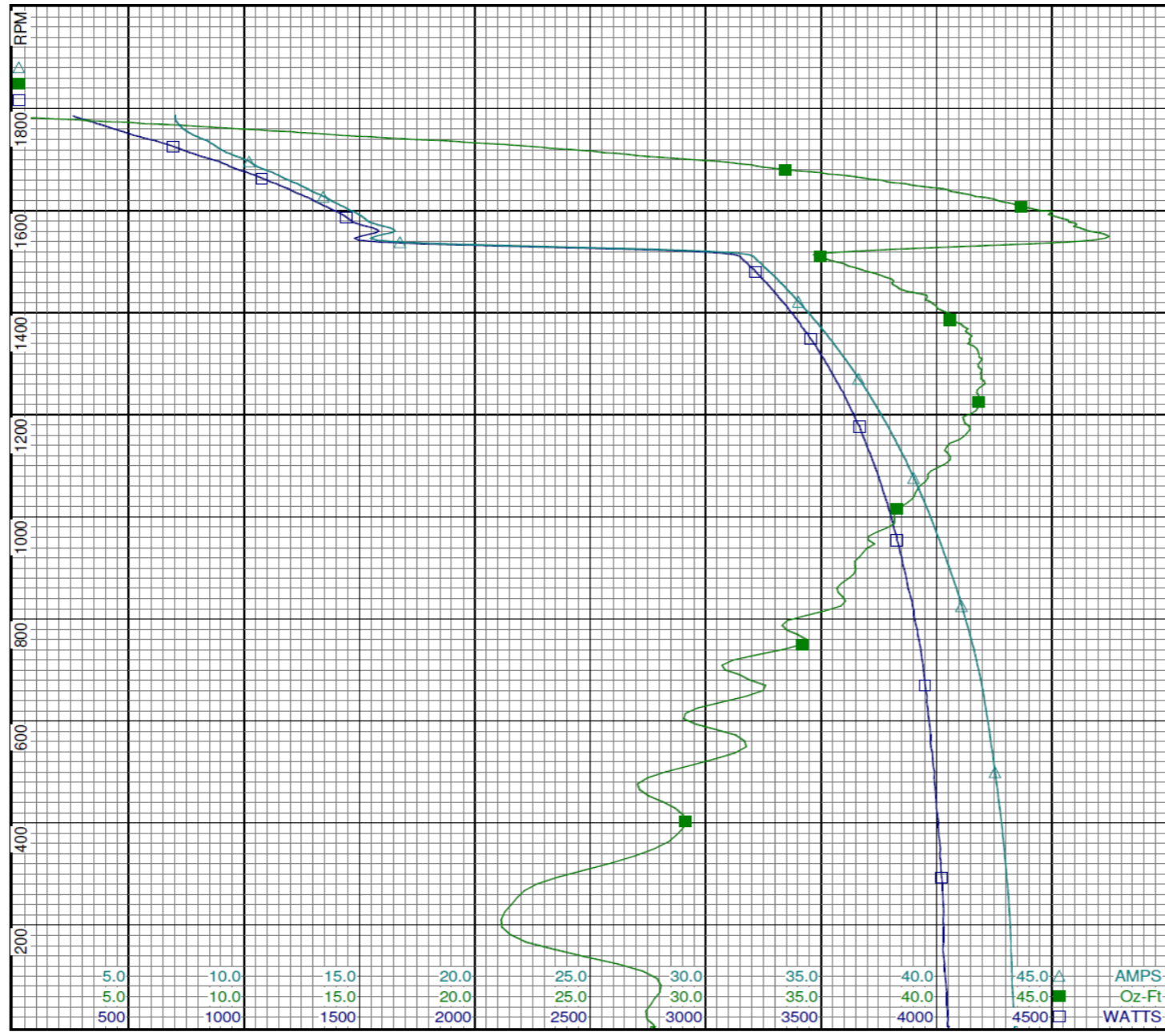
DRAWING NO. PAGE 1 of 4 REV.
 3K772BG -

Dayton Electric Mfg. Co. Lake Forest, IL 60045 USA

Performance Data



3K772BG REV. -



Dayton

Curve Descriptions:
 Motor(1) Test 2 Start 115V 60 Hz 4P
 2 line start

- SPEED vs WATTS
- SPEED vs TORQUE
- △ SPEED vs ILine

Motor Ratings:
 (1) S055SFC8462 3K772BG

DRAWING NO.	PAGE 2 of 4	REV.
	3K772BG	-

Dayton Electric Mfg. Co. Lake Forest, IL 60045 USA

Performance Data



3K772BG	REV. -
----------------	-----------

Dayton Manufacturing Company

Motor Description

Model: S055SFC8462 3K772BG
 Motor ID: CAT 8200
 Poles: 4
 Volts: 115
 Frequency: 60
 HP: 1/2
 Speed: 1725
 Phase: 1
 Protector: 20MAO6PF

Test Conditions

Test Type: Run
 Test Number: 3
 Poles: 4
 Volts: 115
 Hz: 60
 Rotation:
 Special Cond:
 Speed Conn:
 TestBoard: Amps Performance Fixture #3
 Run Cap: 0
 Start Cap: 0µfd
 Environment:
 Tested: 9/9/2010 2:50:47 PM
 Tested By: Sharp, Gerald
 Gear Ratio: 1:1
 Bearing Friction: -1.51 Oz-Ft
 Windage Torque: -4.92 Oz-Ft

Comments: 1

Special Points	Vline (V)	Iline (A)	Watts	RPM	Tq (Oz-ft)	HP	Eff (%)	PF (%)
	115.0	6.87	261	1777	0.00	0.000	0.0	33.1
	115.0	7.20	420	1757	9.24	0.193	34.3	50.7
	115.0	8.06	588	1737	17.73	0.367	46.5	63.5
1725 RPM	115.0	8.66	677	1725	21.62	0.444	48.9	67.9
24.3 OZ-FT	115.0	9.05	736	1716	24.30	0.496	50.3	70.7
0.5 HP	115.0	9.07	739	1716	24.48	0.500	50.5	70.9
	115.0	9.08	741	1716	24.58	0.502	50.6	70.9
30.4 OZ-FT	115.0	10.06	882	1696	30.40	0.614	51.9	76.2
	115.0	10.18	896	1694	30.99	0.625	52.0	76.6
	115.0	11.25	1029	1672	35.64	0.710	51.4	79.6
	115.0	12.51	1170	1648	39.69	0.779	49.6	81.4
	115.0	13.73	1302	1623	43.11	0.833	47.7	82.4
	115.0	14.96	1430	1596	45.56	0.865	45.2	83.1
	115.0	16.28	1560	1564	47.14	0.878	42.0	83.3
	115.0	17.49	1673	1533	48.02	0.876	39.1	83.2
BDT OZ-FT	115.0	18.48	1763	1505	48.29	0.865	36.6	83.0
	115.0	18.72	1786	1496	48.09	0.857	35.8	82.9
	115.0	19.89	1887	1458	47.40	0.823	32.5	82.5
	115.0	21.04	1979	1416	46.16	0.778	29.3	81.8
	115.0	22.12	2065	1371	44.19	0.721	26.1	81.2
	115.0	23.15	2140	1322	41.99	0.661	23.0	80.4
	115.0	24.12	2209	1268	39.23	0.592	20.0	79.6
	115.0	25.03	2269	1210	36.04	0.519	17.1	78.8
	115.0	25.87	2322	1148	32.63	0.446	14.3	78.0
	115.0	26.64	2365	1079	29.07	0.373	11.8	77.2
	115.0	27.34	2405	1006	25.50	0.305	9.5	76.5
	115.0	27.97	2438	927	22.76	0.251	7.7	75.8
	115.0	28.83	2506	843	19.02	0.191	5.7	75.6
	115.0	42.95	4054	756	32.98	0.297	5.5	82.1
	115.0	42.89	4034	660	32.08	0.252	4.7	81.8
	115.0	43.06	4037	555	31.89	0.211	3.9	81.5
	115.0	43.21	4044	443	29.83	0.157	2.9	81.4
	115.0	43.35	4052	323	22.96	0.088	1.6	81.3
	115.0	43.38	4051	199	24.64	0.058	1.1	81.2
	115.0	43.31	4044	60	27.17	0.019	0.4	81.2

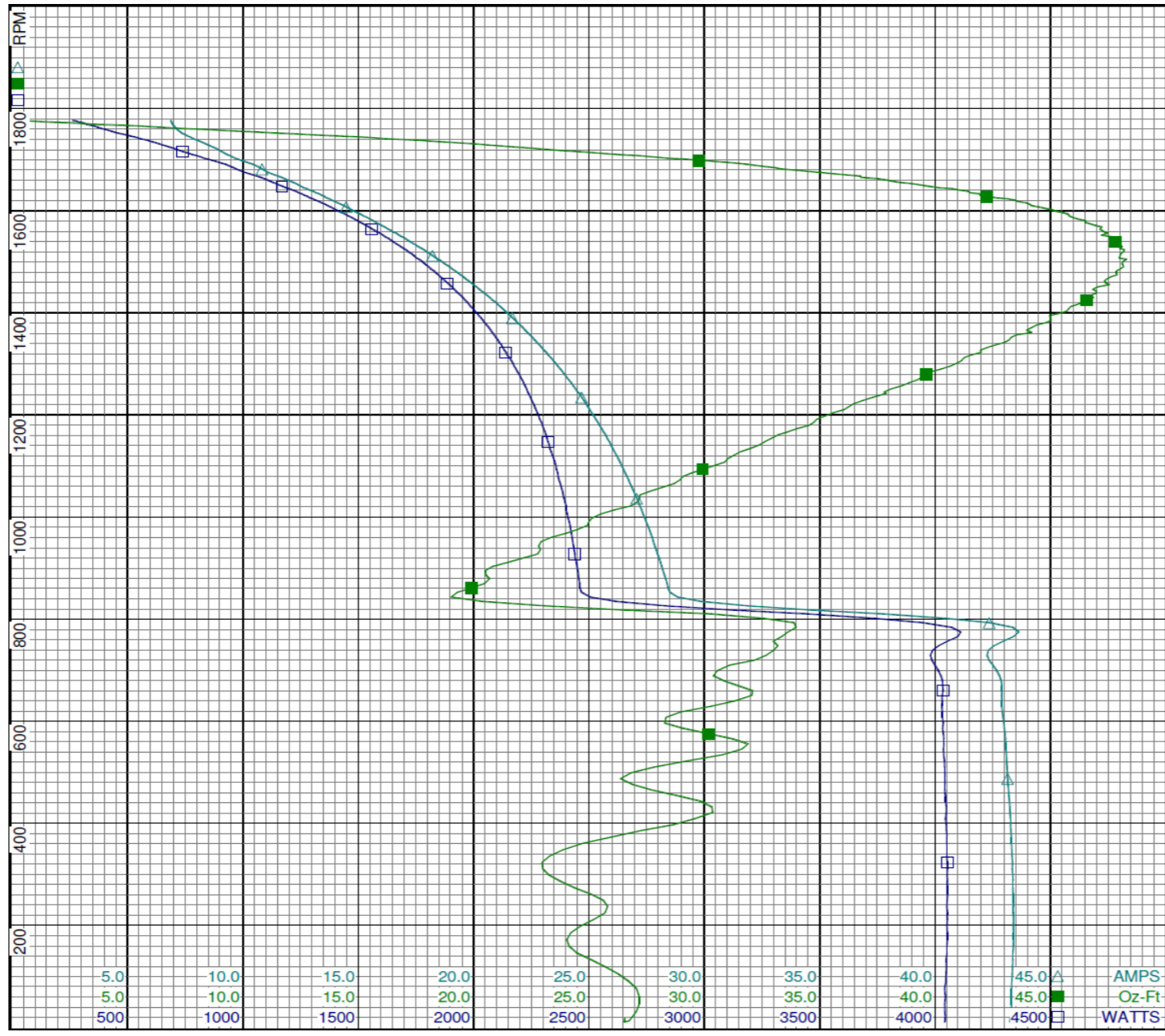
DRAWING NO.	PAGE 3 of 4	REV.
	3K772BG	-

Dayton Electric Mfg. Co. Lake Forest, IL 60045 USA

Performance Data



3K772BG REV. -



Dayton

Curve Descriptions:
Motor(1) Test 3 Run 115V 60 Hz 4P

- SPEED vs WATTS
- SPEED vs TORQUE
- △ SPEED vs ILine

Motor Ratings:
(1) S055SFC8462 3K772BG

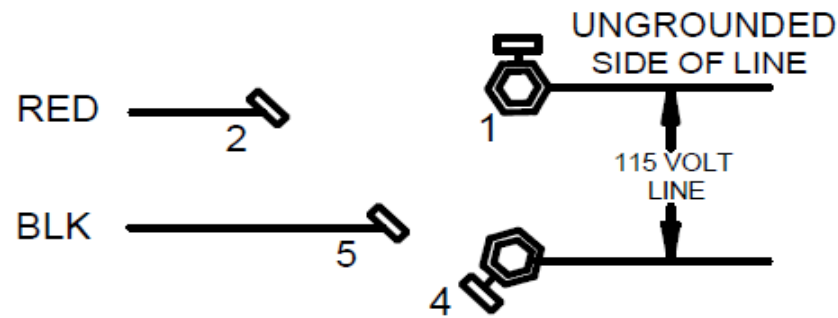
DRAWING NO. PAGE 4 of 4 REV.
3K772BG -

Dayton Electric Mfg. Co. Lake Forest, IL 60045 USA

3K772BG

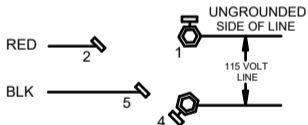
REV.
-

CONNECTIONS



ROTATION CCW LE
TO REVERSE ROTATION
INTERCHANGE RED & BLK LEADS

DRAWING NO.	PAGE 1 of 1	REV.
3K772BG		-

Dayton[®]**BELT DRIVE FAN &
BLOWER MOTOR****HP:** 1/2**VOLTS:** 115**AMPS:** 8.0**RPM:** 1725**DUTY:** CONT**SF:** 1.25**KVA CODE:** K**ENCL:** ODP**THERMALLY PROTECTED:** AUTOMFG. NO. PROT. CODE: 04030 **MTR REF:** S55JXSFC-8462Part
No **3K772BG****PH:** 1**HZ:** 60**FR:** 48**INS CL:** B**AMB:** 40 °C**SFA:** 9.0AVG. F.L.
EFF.**Disconnect Power Before Making Any
Electrical Connections or Changes****CONNECTIONS****ROTATION CCW LE
TO REVERSE ROTATION
INTERCHANGE RED & BLK LEADS**

Mfd for Dayton Electric Mfg. Co., Lake Forest, IL 60045 USA

Made in Mexico