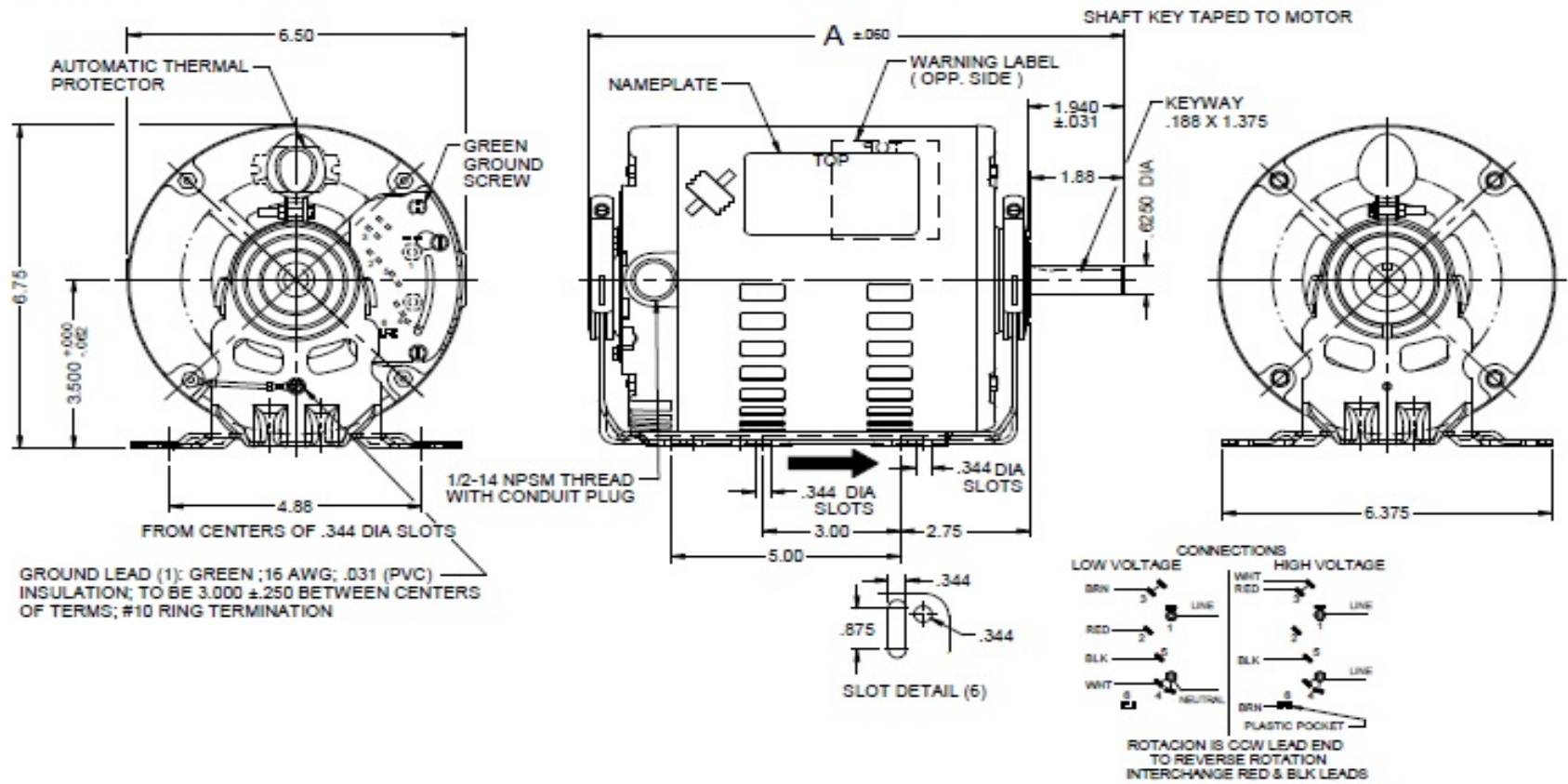


Dimensional Drawing

3K617BG

REV.

VAR	MODEL	CUST. PT. NO.	A	B	C	D	HP	VOLTS	SP	AMPS	HZ	RPM	CONN VOLTS	PROT	DESCRIPTION / REMARKS
001	863CXSJB-8179	3K617BG	11.25	—	—	—	3/4	115/208-230	1.25	11.2/5.6-5.6	60	1725	—	AUTO	56H BALL BEARING, OOP.



DRAWING NO. PAGE 1 of 1 REV.
3K617BG -

3K617BG

REV.

-

SPLIT-PHASE & CAPACITOR START MOTOR PERFORMANCE

HP:	3/4						
Poles:	4						
Ambient (°C):	40						
Altitude (FASL):							
No. of Speeds:	1						
Volts:	115/230	115	208	230			
HZ:	60	60	60	60			
Service Factor:	1.25						
Efficiency:	@ Rated Load	66.0	66.8				
Power Factor:	@ Rated Load	67.7	67.4				
Amps:	@ No Load						
	@ Rated Load	11	5.4	5.4			
	@ Service Factor	12.3	6.4	6.1			
	@ Locked Rotor				60.3		
RPM:	@ Rated Load				1737		
Torques:	Breakdown	83.8	72.4	85.4			
	Locked Rotor	37.8	27.1	36.2			
	Pull-Up	36.5	27	34.1			
	Rated Load	36.5	36.5	36.5			
	Service Factor	45.7	47.5	45.7			
Watts:	Rated Load	853	832	842			
KVA Code:	A		L				
Temperature Rise:	@ Rated Load	49.9	49.3	50.7			
	@ Service Factor	63	73.3	62.5			
Thermal Protector:	Trip Temp (°C)	129.3	131	131.7			
Winding Material:	Start (Auxiliary)	Cu	Cu	Cu			
	Run (Main)	Cu	Cu	Cu			
Capacitor(s):	Start (MFD / Volts)				NA		
	No. of Start Capacitors						
	Run (MFD / Volts)				NA		
	No. of Run Capacitors						

LOW SPEED PERFORMANCE DATA:

HP:							
Poles:							
Volts:							
HZ:							
Efficiency:	@ Rated Load						
Power Factor:	@ Rated Load						
Amps:	@ No Load						
	@ Rated Load						
	@ Service Factor						
	@ Locked Rotor						
Torques:	BreakDown						
	Locked Rotor						
	Pull-Up						
	Rated Load						
	Service Factor						
Watts:	@ Rated Load						
Temperature Rise:	@ Rated Load						
	@ Service Factor						

DRAWING NO. PAGE 1 of 1 REV.
3K617BG -

Performance Data



3K617BG

REV.

-

Dayton Manufacturing Company

Motor Description

Test Conditions

Model:	S063SJB8197	3K617BG	Test Type:	Start	Run Cap:	0
Motor ID:			Test Number:	4	Start Cap:	0µfd
Poles:	4		Poles:	4	Environment:	21.0 Deg C 13 % RH 1003 hPa
Volts:	115/230		Volts:	115	Tested:	1/23/2013 10:37:11 AM
Frequency:	60		Hz:	60	Tested By:	Sharp, Gerald
HP:	3/4		Rotation:		Gear Ratio:	1:1
Speed:	1725		Special Cond:		Bearing Friction:	-0.65 Oz-Ft
Phase:	1		Speed Conn:		Windage Torque:	-2.68 Oz-Ft
Protector:			TestBoard:	Amps Performance	Fixture #1	

Special Points	Vline (V)	Iline (A)	Imain (A)	Iaux (A)	Watts	RPM	Tq (Oz-ft)	HP	Eff (%)	PF (%)
	115.0	60.27	48.54	12.484	5388	7	37.75	0.003	0.0	77.7
	115.0	60.16	48.48	12.393	5374	29	37.99	0.013	0.2	77.7
PUT OZ-FT	115.0	60.07	48.61	12.031	5356	158	36.47	0.069	1.0	77.5
	115.0	60.07	48.61	12.031	5356	158	36.47	0.069	1.0	77.5
	115.0	59.72	48.43	11.739	5344	280	41.19	0.137	1.9	77.8
	115.0	59.21	48.13	11.429	5307	395	47.11	0.222	3.1	77.9
	115.0	58.62	47.83	11.051	5252	502	51.13	0.306	4.3	77.9
	115.0	58.21	47.74	10.615	5202	602	49.52	0.355	5.1	77.7
	115.0	58.03	47.70	10.362	5206	694	43.47	0.359	5.1	78.0
	115.0	57.44	47.16	10.215	5191	782	45.29	0.422	6.1	78.6
	115.0	56.55	46.39	10.052	5152	865	50.02	0.515	7.5	79.2
	115.0	55.57	45.57	9.880	5093	943	54.61	0.613	9.0	79.7
	115.0	54.51	44.68	9.726	5026	1014	58.47	0.706	10.5	80.2
	115.0	53.42	43.76	9.605	4959	1081	61.30	0.789	11.9	80.7
	115.0	52.23	42.74	9.505	4876	1144	63.54	0.865	13.2	81.2
	115.0	51.04	41.65	9.496	4791	1201	63.42	0.907	14.1	81.6
	115.0	49.81	40.50	9.531	4714	1254	62.27	0.930	14.7	82.3
	115.0	48.60	39.30	9.665	4632	1304	60.19	0.934	15.0	82.9
	115.0	47.49	38.13	9.821	4529	1350	58.88	0.946	15.6	82.9
	115.0	46.29	36.95	9.992	4433	1392	57.12	0.947	15.9	83.3
	115.0	45.06	35.76	10.175	4330	1432	54.80	0.935	16.1	83.6
	115.0	43.86	34.59	10.383	4229	1469	52.84	0.924	16.3	83.8
	115.0	42.66	33.40	10.616	4123	1502	49.17	0.879	15.9	84.0
	115.0	41.45	32.20	10.863	4011	1534	45.77	0.836	15.5	84.1
	115.0	40.29	31.04	11.114	3902	1563	42.02	0.782	14.9	84.2
	115.0	39.14	29.87	11.379	3791	1590	37.47	0.709	14.0	84.2
	115.0	38.02	28.72	11.646	3679	1615	32.74	0.629	12.8	84.1
	115.0	36.93	27.59	11.913	3567	1637	28.17	0.549	11.5	84.0
	115.0	35.85	26.46	12.178	3457	1660	22.81	0.451	9.7	83.9
	115.0	34.79	25.34	12.447	3346	1680	16.89	0.338	7.5	83.6
	115.0	33.78	24.25	12.725	3234	1699	11.06	0.224	5.2	83.3
	115.0	32.75	23.13	13.004	3122	1718	4.84	0.099	2.4	82.9
	115.0	31.87	22.15	13.251	3020	1733	0.00	0.000	0.0	82.4

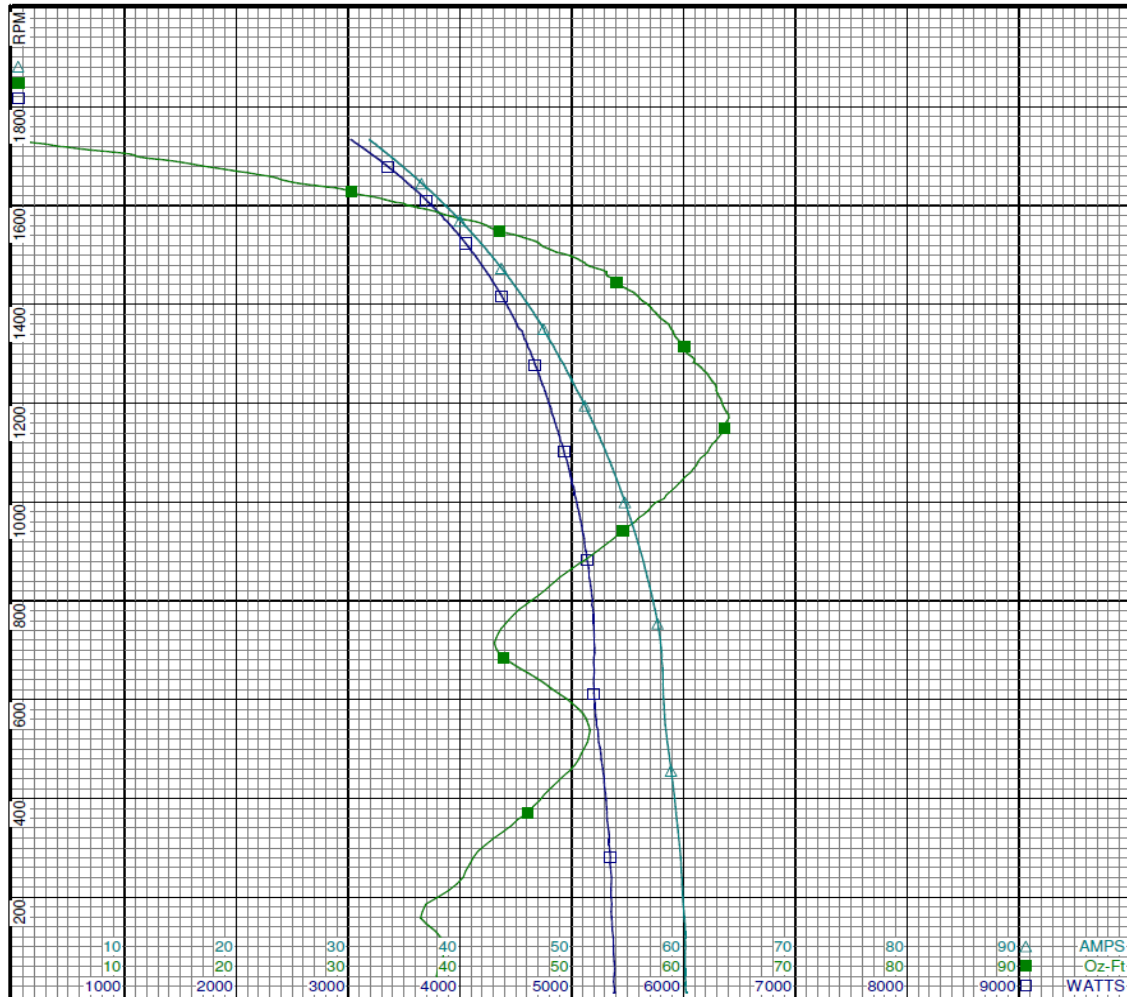
DRAWING NO.	PAGE 1 of 8	REV.
	3K617BG	-

Performance Data



3K617BG

REV.
-



Curve Descriptions:
Motor(1) Test 4 Start 115V 60 Hz 4P

- SPEED vs WATTS
- SPEED vs TORQUE
- △ SPEED vs ILine

Motor Ratings:
(1) S063SJB8197 3K617BG

10 20 30 40 50 60 70 80 90 A AMPS
10 20 30 40 50 60 70 80 90 Oz-Ft
1000 2000 3000 4000 5000 6000 7000 8000 9000 WATTS

DRAWING NO. PAGE 2 of 8 REV.
3K617BG -

Performance Data



3K617BG

REV.

-

Dayton Manufacturing Company

Motor Description

Model: S063SJB8197 3K617BG
 Motor ID:
 Poles: 4
 Volts: 115/230
 Frequency: 60
 HP: 3/4
 Speed: 1725
 Phase: 1
 Protector:

Test Conditions

Test Type: Run Run Cap: 0
 Test Number: 1 Start Cap: 0µfd
 Poles: 4 Environment: 21.0 Deg C 13 % RH 1003 hPa
 Volts: 115 Tested: 1/23/2013 10:35:53 AM
 Hz: 60 Tested By: Sharp, Gerald
 Rotation: Gear Ratio: 1:1
 Special Cond: Bearing Friction: -0.63 Oz-Ft
 Speed Conn: Windage Torque: -2.73 Oz-Ft
 TestBoard: Amtps Performance Fixture #1

Special Points	Vline (V)	Iline (A)	Watts	RPM	Tq (Oz-ft)	HP	Eff (%)	PF (%)
	115.0	8.13	180	1794	0.00	0.000	0.0	19.3
	115.0	8.55	407	1776	12.88	0.272	49.9	41.4
	115.0	9.65	651	1756	26.30	0.550	63.0	58.7
0.75 HP	115.0	10.93	848	1738	36.26	0.750	65.9	67.5
36.5 OZ-FT	115.0	10.97	853	1737	36.50	0.755	66.0	67.7
	115.0	11.02	861	1736	36.86	0.762	66.0	67.9
1725 RPM	115.0	11.90	987	1725	43.07	0.884	66.9	72.1
45.7 OZ-FT	115.0	12.30	1043	1719	45.70	0.935	66.9	73.7
	115.0	12.53	1074	1716	47.04	0.961	66.8	74.5
	115.0	14.31	1292	1696	56.37	1.138	65.7	78.5
	115.0	16.20	1514	1672	64.29	1.280	63.1	81.2
	115.0	18.18	1739	1647	70.99	1.392	59.7	83.2
	115.0	20.20	1954	1621	74.86	1.444	55.1	84.1
	115.0	22.28	2164	1592	78.56	1.489	51.3	84.4
	115.0	24.39	2364	1561	81.14	1.508	47.6	84.3
	115.0	26.45	2554	1527	82.25	1.495	43.7	84.0
	115.0	28.51	2738	1491	83.57	1.483	40.4	83.5
BDT OZ-FT	115.0	29.68	2843	1467	83.79	1.463	38.4	83.3
	115.0	30.49	2909	1451	82.74	1.429	36.6	83.0
	115.0	32.43	3069	1407	81.51	1.366	33.2	82.3
	115.0	34.30	3209	1360	79.53	1.287	29.9	81.4
	115.0	36.09	3341	1308	76.49	1.191	26.6	80.5
	115.0	37.78	3456	1253	73.30	1.093	23.6	79.5
	115.0	39.41	3556	1193	70.16	0.996	20.9	78.5
	115.0	40.93	3650	1128	65.22	0.876	17.9	77.5
	115.0	42.36	3727	1058	58.38	0.735	14.7	76.5
	115.0	43.65	3793	981	50.68	0.592	11.6	75.6
	115.0	44.83	3848	899	41.91	0.449	8.7	74.6
	115.0	45.91	3883	812	32.72	0.316	6.1	73.6
	115.0	46.79	3903	718	23.70	0.203	3.9	72.5
	115.0	47.25	3906	619	20.58	0.152	2.9	71.9
	115.0	47.42	3922	513	24.73	0.151	2.9	71.9
	115.0	47.89	3969	399	19.99	0.095	1.8	72.1
	115.0	48.31	3992	277	13.29	0.044	0.8	71.9
	115.0	48.61	4015	147	5.27	0.009	0.2	71.8

DRAWING NO. PAGE 3 of 8
3K617BG

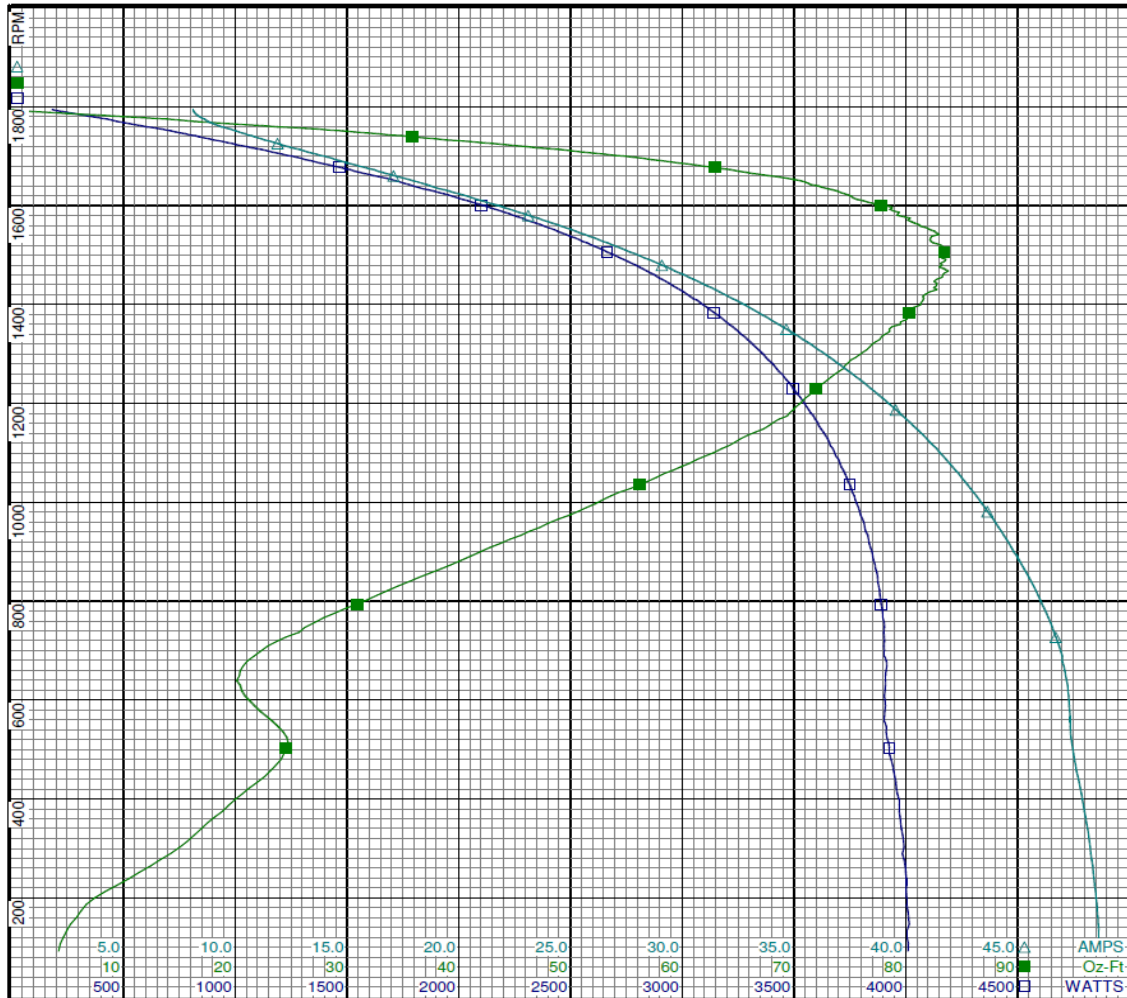
REV.
 -

Performance Data



3K617BG

REV.
-



Curve Descriptions:
Motor(1) Test 1 Run 115V 60 Hz 4P

- SPEED vs WATTS
- SPEED vs TORQUE
- △ SPEED vs ILine

Motor Ratings:
(1) S063SJB8197 3K617BG

DRAWING NO. PAGE 4 of 8 REV.
3K617BG -

Performance Data



3K617BG

REV.

-

Dayton Manufacturing Company

Motor Description

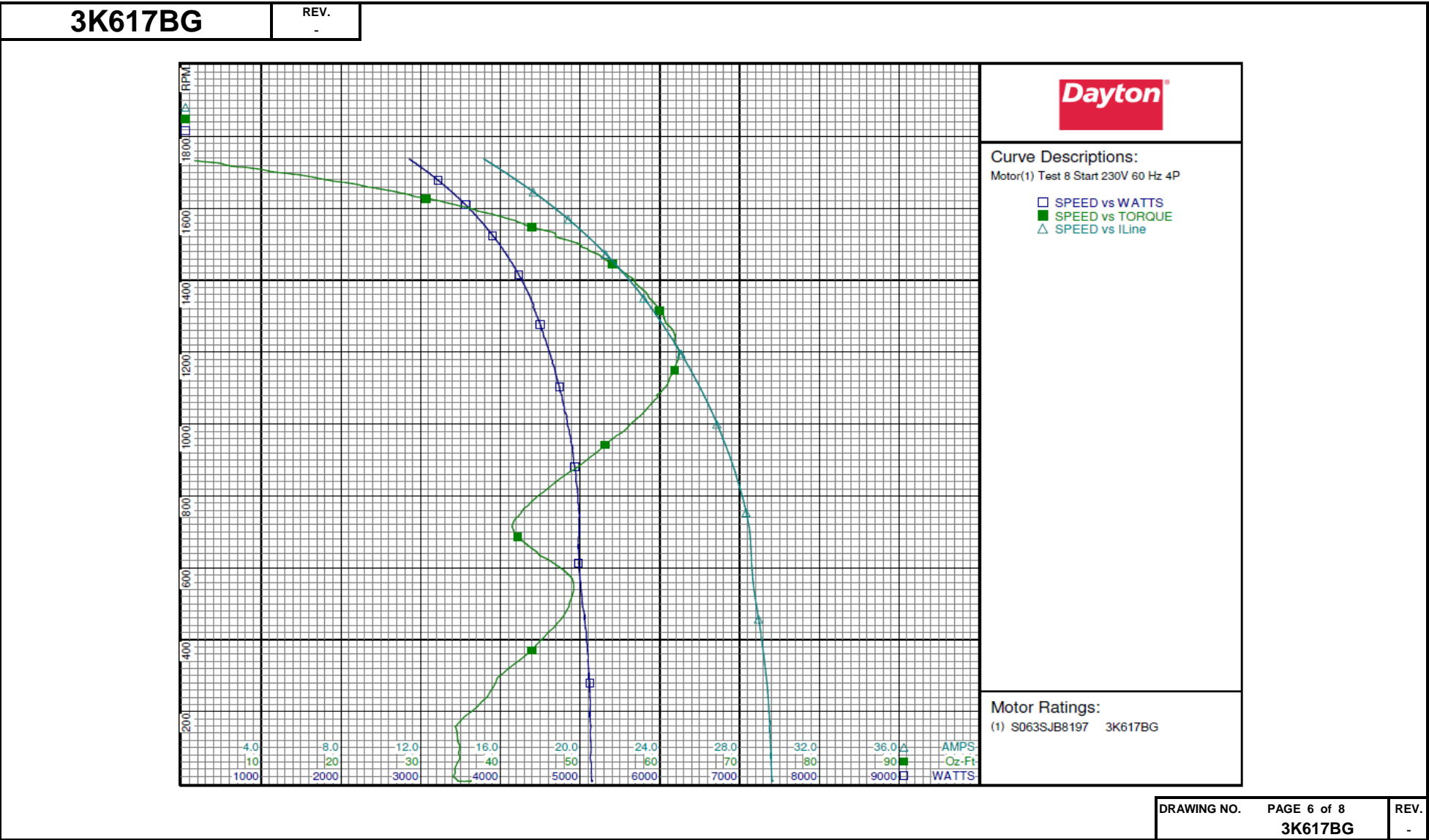
Model: S063SJB8197 3K617BG
 Motor ID:
 Poles: 4
 Volts: 115/230
 Frequency: 60
 HP: 3/4
 Speed: 1725
 Phase: 1
 Protector:

Test Conditions

Test Type: Start
 Test Number: 8
 Poles: 4
 Volts: 230
 Hz: 60
 Rotation:
 Special Cond:
 Speed Conn:
 TestBoard: Amps Performance Fixture #1
 Run Cap: 0
 Start Cap: 0µfd
 Environment: 21.0 Deg C 13 % RH 1003 hPa
 Tested: 1/23/2013 10:47:00 AM
 Tested By: Sharp, Gerald
 Gear Ratio: 1:1
 Bearing Friction: -0.59 Oz-Ft
 Windage Torque: -2.46 Oz-Ft

Special Points	Vline (V)	Iline (A)	Imain(A)	Iaux(A)	Watts	RPM	Tq(Oz-ft)	HP	Eff(%)	PF(%)
	230.0	29.66	19.298	11.294	5153	7	36.22	0.003	0.0	75.5
PUT OZ-FT	230.0	29.61	19.267	11.246	5142	19	34.05	0.008	0.1	75.5
	230.0	29.60	19.267	11.231	5139	28	34.32	0.012	0.2	75.5
	230.0	29.52	19.310	10.953	5135	159	34.36	0.065	0.9	75.6
	230.0	29.37	19.261	10.685	5122	280	39.39	0.131	1.9	75.8
	230.0	29.12	19.156	10.409	5078	395	44.95	0.212	3.1	75.8
	230.0	28.82	19.079	10.069	5025	502	48.64	0.291	4.3	75.8
	230.0	28.61	19.121	9.688	4986	602	47.34	0.340	5.1	75.8
	230.0	28.51	19.084	9.480	4989	695	41.82	0.346	5.2	76.1
	230.0	28.22	18.801	9.372	4971	782	43.85	0.408	6.1	76.6
	230.0	27.78	18.447	9.259	4944	865	48.61	0.501	7.6	77.4
	230.0	27.28	18.076	9.143	4893	942	53.13	0.596	9.1	78.0
	230.0	26.76	17.688	9.032	4830	1015	57.11	0.690	10.7	78.5
	230.0	26.19	17.276	8.959	4768	1081	59.62	0.767	12.0	79.2
	230.0	25.61	16.836	8.916	4689	1143	61.77	0.840	13.4	79.6
	230.0	25.01	16.345	8.936	4616	1201	62.39	0.892	14.4	80.2
	230.0	24.40	15.815	9.015	4534	1255	61.73	0.922	15.2	80.8
	230.0	23.80	15.259	9.149	4447	1304	60.35	0.937	15.7	81.2
	230.0	23.19	14.701	9.313	4378	1350	58.64	0.942	16.1	82.1
	230.0	22.58	14.164	9.497	4284	1393	56.90	0.943	16.4	82.5
	230.0	21.97	13.641	9.693	4183	1432	54.86	0.935	16.7	82.8
	230.0	21.35	13.129	9.901	4082	1469	52.49	0.918	16.8	83.1
	230.0	20.74	12.629	10.129	3978	1503	49.63	0.888	16.7	83.4
	230.0	20.13	12.142	10.365	3867	1534	46.52	0.849	16.4	83.5
	230.0	19.54	11.666	10.608	3763	1562	42.16	0.784	15.5	83.7
	230.0	18.97	11.219	10.858	3654	1590	37.75	0.714	14.6	83.8
	230.0	18.39	10.781	11.105	3538	1614	33.40	0.642	13.5	83.6
	230.0	17.83	10.365	11.352	3424	1638	28.54	0.556	12.1	83.5
	230.0	17.29	9.969	11.615	3317	1659	23.27	0.460	10.3	83.4
	230.0	16.77	9.590	11.868	3205	1680	18.10	0.362	8.4	83.1
	230.0	16.24	9.220	12.107	3093	1700	12.02	0.243	5.9	82.8
	230.0	15.73	8.888	12.363	2981	1717	6.26	0.128	3.2	82.4
	230.0	15.22	8.534	12.625	2866	1735	0.11	0.002	0.1	81.9
	230.0	15.16	8.497	12.658	2855	1737	0.00	0.000	0.0	81.9

DRAWING NO. PAGE 5 of 8 REV.
 3K617BG -



Performance Data



3K617BG

REV.

-

Dayton Manufacturing Company

Motor Description

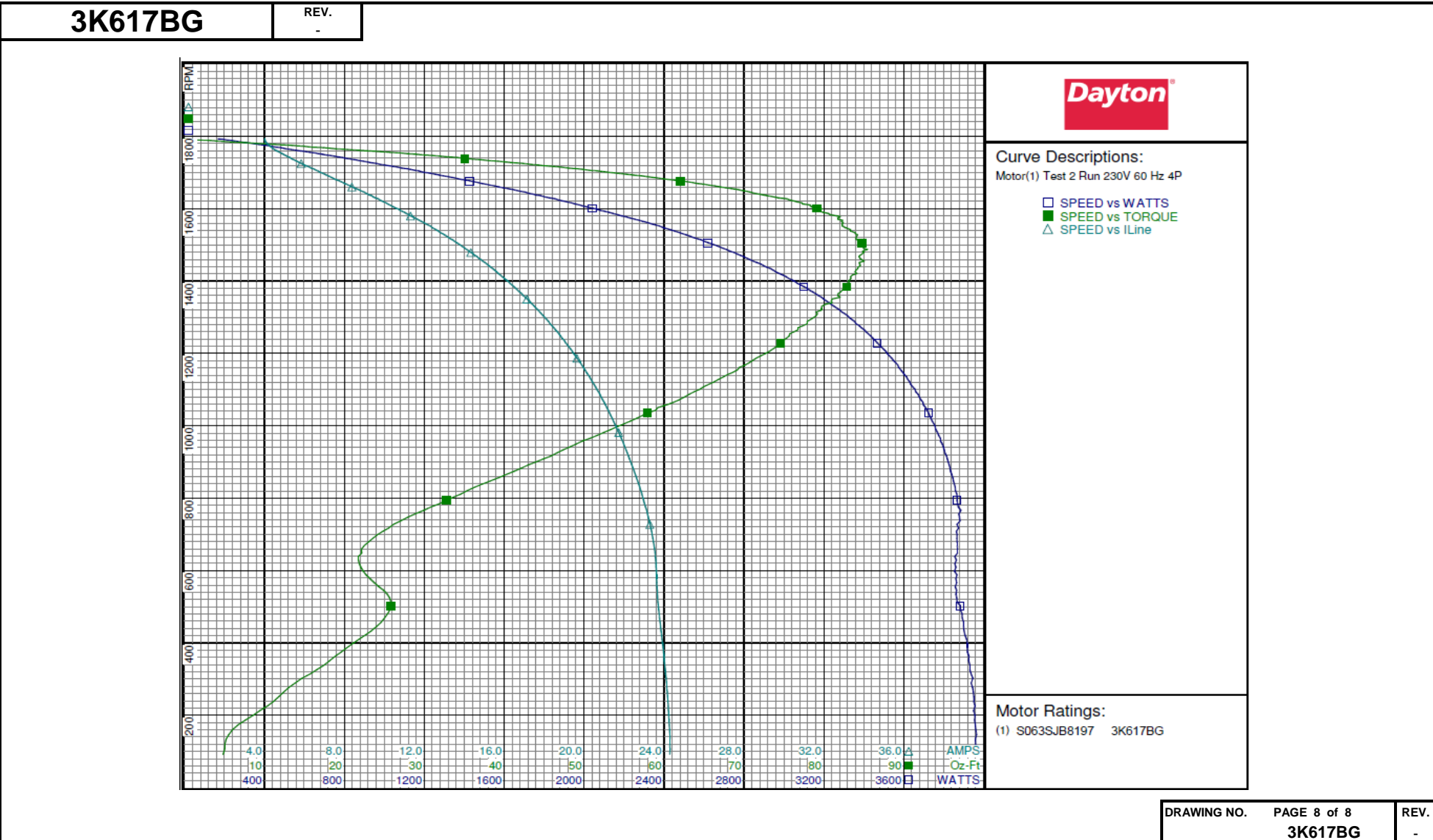
Model: S063SJB8197 3K617BG
 Motor ID:
 Poles: 4
 Volts: 115/230
 Frequency: 60
 HP: 3/4
 Speed: 1725
 Phase: 1
 Protector:

Test Conditions

Test Type: Run Run Cap: 0
 Test Number: 2 Start Cap: 0µfd
 Poles: 4 Environment: 21.0 Deg C 13 % RH 1003 hPa
 Volts: 230 Tested: 1/23/2013 10:45:58 AM
 Hz: 60 Tested By: Sharp, Gerald
 Rotation: Gear Ratio: 1:1
 Special Cond: Bearing Friction: -0.58 Oz-Ft
 Speed Conn: Windage Torque: -2.44 Oz-Ft
 TestBoard: Amps Performance Fixture #1

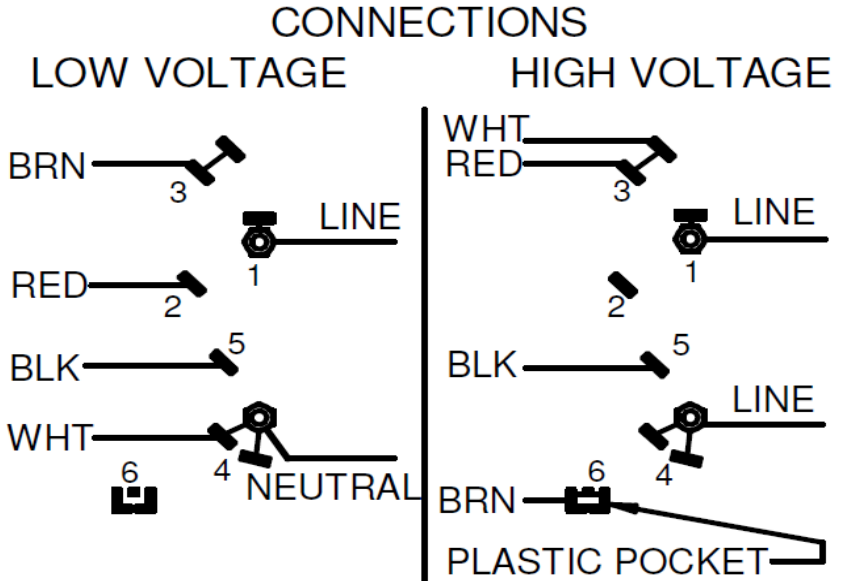
Special Points	Vline (V)	Iline (A)	Watts	RPM	Tq(Oz-Ft)	HP	Eff (%)	PF (%)
	230.0	4.01	168	1793	0.00	0.000	0.0	18.2
	230.0	4.22	392	1776	12.45	0.263	50.1	40.4
	230.0	4.76	629	1755	25.69	0.537	63.7	57.5
	230.0	5.40	834	1736	36.05	0.745	66.7	67.1
0.75 HP	230.0	5.42	838	1736	36.29	0.750	66.7	67.3
36.5 OZ-FT	230.0	5.43	842	1736	36.50	0.754	66.8	67.4
1725 RPM	230.0	5.83	953	1725	42.06	0.864	67.6	71.1
45.7 OZ-FT	230.0	6.13	1036	1717	45.70	0.934	67.3	73.4
	230.0	6.17	1045	1716	46.21	0.944	67.4	73.6
	230.0	7.02	1255	1695	55.30	1.116	66.3	77.7
	230.0	7.93	1470	1672	63.60	1.266	64.2	80.6
	230.0	8.89	1684	1647	70.38	1.380	61.2	82.3
	230.0	9.89	1897	1621	76.34	1.473	57.9	83.4
	230.0	10.90	2104	1592	79.56	1.508	53.5	83.9
	230.0	11.97	2319	1561	82.41	1.531	49.3	84.2
	230.0	13.01	2511	1527	84.21	1.531	45.5	83.9
	230.0	14.03	2694	1491	84.95	1.508	41.8	83.5
BDT OZ-FT	230.0	14.13	2713	1487	85.44	1.512	41.6	83.5
	230.0	15.03	2863	1451	84.44	1.459	38.0	82.8
	230.0	16.01	3023	1407	83.38	1.397	34.5	82.1
	230.0	16.96	3173	1359	81.77	1.323	31.1	81.4
	230.0	17.87	3307	1309	79.19	1.234	27.8	80.4
	230.0	18.73	3422	1254	75.74	1.131	24.7	79.4
	230.0	19.56	3527	1193	72.11	1.024	21.7	78.4
	230.0	20.34	3620	1128	66.82	0.897	18.5	77.4
	230.0	21.07	3698	1058	60.36	0.760	15.3	76.3
	230.0	21.73	3768	981	52.50	0.613	12.1	75.4
	230.0	22.33	3822	900	43.97	0.471	9.2	74.4
	230.0	22.88	3865	811	34.61	0.334	6.5	73.4
	230.0	23.34	3874	717	25.54	0.218	4.2	72.2
	230.0	23.59	3855	618	21.87	0.161	3.1	71.1
	230.0	23.69	3867	513	25.82	0.158	3.0	71.0
	230.0	23.93	3917	398	21.06	0.100	1.9	71.2
	230.0	24.13	3944	277	13.05	0.043	0.8	71.1
	230.0	24.29	3964	146	5.53	0.010	0.2	71.0

DRAWING NO. PAGE 7 of 8 REV.
3K617BG -



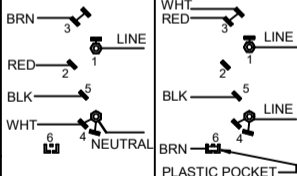
DRAWING NO.	PAGE 8 of 8	REV.
	3K617BG	-

3K617BG REV.
-



ROTACION IS CCW LEAD END
TO REVERSE ROTATION
INTERCHANGE RED & BLK LEADS

DRAWING NO.	PAGE 1 of 1	REV.
3K617BG		-

Dayton[®]**BELT DRIVE FAN &
BLOWER MOTOR****HP:** 3/4
VOLTS: 115/208-230**[BAR CODE]****Part No** 3K617BG**AMPS:** 11.2/5.6-5.6**PH:** 1**RPM:** 1725**HZ:** 60**DUTY:** CONT**FR:** 56H**SF:** 1.25**INS CL:** F**KVA CODE:** L**AMB:** 40 °C**ENCL:** ODP**SFA:** 12.3/6.4-6.1**THERMALLY PROTECTED:** AUTO**MFG. NO.** [] [] **PROT. CODE:** [00560]**AVG. F.L.
EFF.****MTR REF:** S63CXSJB-8179**Disconnect Power Before Making
Any Electrical Connections or Changes****CONNECTIONS****LOW VOLTAGE****HIGH VOLTAGE****ROTATION IS CCW LEAD END
TO REVERSE ROTATION
INTERCHANGE RED & BLK LEADS****Mfd for Dayton Electric Mfg. Co., Lake Forest, IL 60045 USA****[Made in Mexico]**