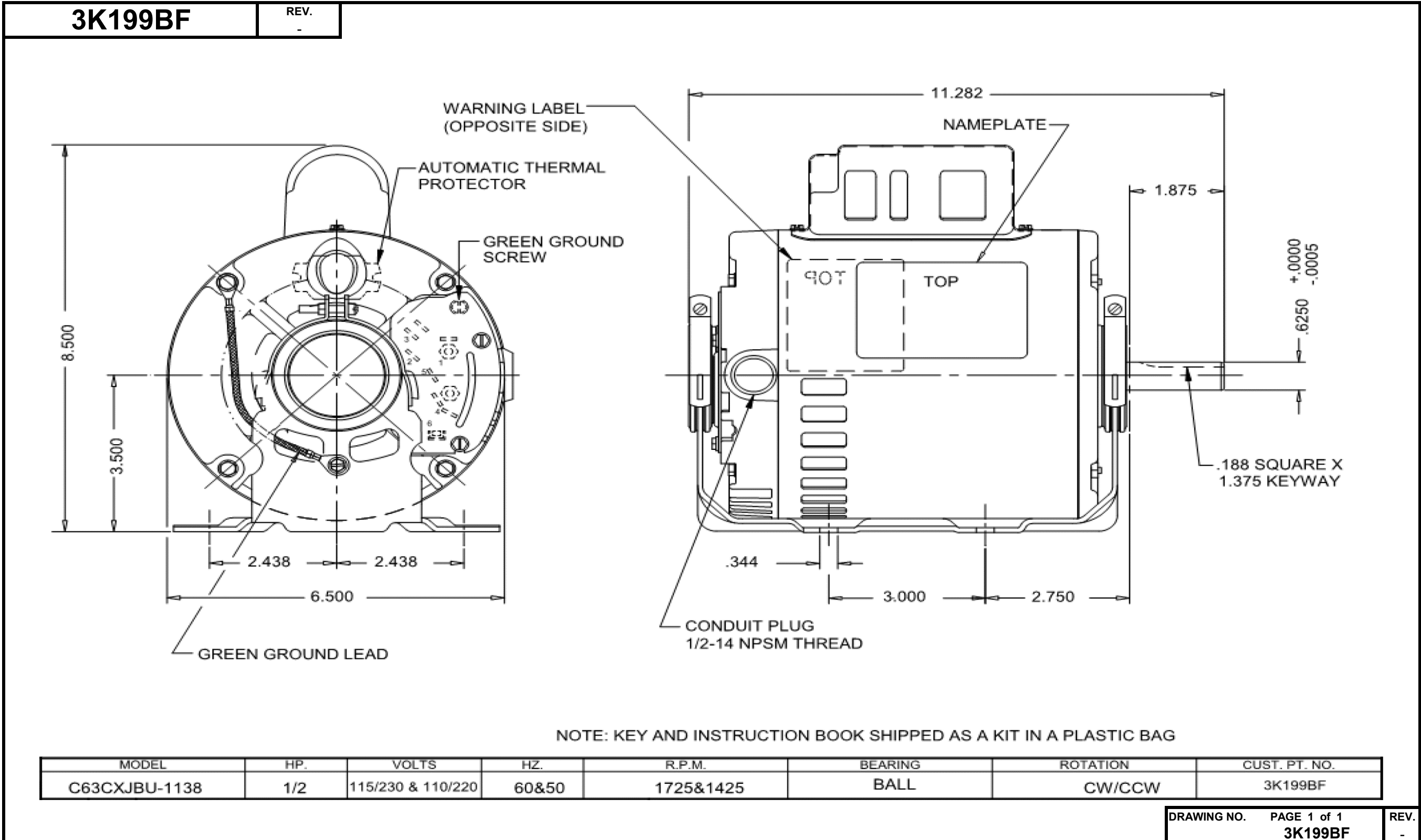


Dimensional Drawing



Dayton Electric Mfg. Co. Lake Forest, IL 60045 USA



3K199BF

REV.

-

SPLIT-PHASE & CAPACITOR START MOTOR PERFORMANCE

| | | | | | | | | |
|---------------------------|-------------------------|-----------------|------------|------------|------------|--|--|--|
| HP: | 1/2 | | | | | | | |
| Poles: | 4 | | | | | | | |
| Ambient (°C): | 40 | | | | | | | |
| Altitude (FASL): | NA | | | | | | | |
| No. of Speeds: | 1 | | | | | | | |
| Volts: | 115/230 & 110/220 | 115 | 230 | 110 | 220 | | | |
| HZ: | 60 | 60 | 60 | 50 | 50 | | | |
| Service Factor: | 1.25 | | | | | | | |
| Efficiency: | @ Rated Load | 64.70 | 63.60 | 63.20 | 61.30 | | | |
| Power Factor: | @ Rated Load | 70.20 | 69.90 | 65.80 | 66.80 | | | |
| Amps: | @ No Load | 5.27 | 2.63 | 7.14 | 3.44 | | | |
| | @ Rated Load | 7.15 | 3.65 | 8.15 | 4.14 | | | |
| | @ Service Factor | 8.14 | 4.14 | 9.05 | 4.61 | | | |
| | @ Locked Rotor | 40.56 | 20.65 | 38.68 | 20.24 | | | |
| RPM: | @ Rated Load | 1745 | 1744 | 1450 | 1449 | | | |
| Torques: | Breakdown | 60.1 | 61.7 | 76.7 | 73.7 | | | |
| | Locked Rotor | 81.20 | 73.23 | 80.63 | 75.18 | | | |
| | Pull-Up | 77.19 | 72.30 | 80.43 | 73.75 | | | |
| | Rated Load | 24.07 | 24.08 | 28.96 | 28.98 | | | |
| | Service Factor | 30.34 | 30.35 | 36.52 | 36.57 | | | |
| Watts: | Rated Load | 577 | 586 | 590 | 608 | | | |
| KVA Code: | | | | | | | | |
| Temperature Rise: | @ Rated Load | 32.40 | 34.80 | 65.50 | 68.20 | | | |
| | @ Service Factor | 39.90 | 40.40 | 72.00 | 74.10 | | | |
| Thermal Protector: | Trip Temp (°C) | 130.50 | 127.80 | 129.50 | 128.60 | | | |
| Winding Material: | Start (Auxiliary) | AL | | | | | | |
| | Run (Main) | AL | | | | | | |
| Capacitor(s): | Start (MFD / Volts) | 594 mFD / 125 V | | | | | | |
| | No. of Start Capacitors | | | | | | | |
| | Run (MFD / Volts) | | | | | | | |
| | No. of Run Capacitors | | | | | | | |

LOW SPEED PERFORMANCE DATA:

| | | | | | | | | |
|--------------------------|------------------|--|--|--|--|--|--|--|
| HP: | | | | | | | | |
| Poles: | | | | | | | | |
| Volts: | | | | | | | | |
| HZ: | | | | | | | | |
| Efficiency: | @ Rated Load | | | | | | | |
| Power Factor: | @ Rated Load | | | | | | | |
| Amps: | @ No Load | | | | | | | |
| | @ Rated Load | | | | | | | |
| | @ Service Factor | | | | | | | |
| | @ Locked Rotor | | | | | | | |
| Torques: | BreakDown | | | | | | | |
| | Locked Rotor | | | | | | | |
| | Pull-Up | | | | | | | |
| | Rated Load | | | | | | | |
| | Service Factor | | | | | | | |
| Watts: | @ Rated Load | | | | | | | |
| Temperature Rise: | @ Rated Load | | | | | | | |
| | @ Service Factor | | | | | | | |

DRAWING NO. PAGE 1 of 1
3K199BF

REV.

-

Performance Data



3K199BF REV.
-

Dayton Manufacturing Company

Motor Description

Model: C063CXJBU113801
 Motor ID: Motor #1
 Poles: 4
 Volts: 115/230
 Frequency: 60&50
 HP: 1/2
 Speed: 1725&1425
 Phase: 1
 Protector: CEJ68CY

Test Conditions

Test Type: Start Run Cap: 0
 Test Number: 1 Start Cap: 0µfd
 Poles: 4
 Volts: 115 Tested: 3/2/2012 2:09:18 PM
 Hz: 60
 Rotation:
 Special Cond: 2 Line Gear Ratio: 1:1
 Speed Conn: Bearing Friction: -0.59 Oz-Ft
 TestBoard: Amps Performance Fixture #3 Windage Torque: -1.73 Oz-Ft

| Special Points | Vline | Iline | Watts | Speed | Tq (Oz-ft) | HP | Eff (%) | PF (%) |
|----------------|-------|-------|-------|-------|------------|-------|---------|--------|
| PUT OZ-FT | 115.0 | 46.05 | 5181 | 11 | 105.46 | 0.013 | 0.2 | 97.8 |
| | 115.0 | 46.27 | 5206 | 11 | 100.84 | 0.014 | 0.2 | 97.8 |
| | 115.0 | 46.12 | 5190 | 39 | 104.26 | 0.048 | 0.7 | 97.9 |
| | 115.0 | 46.00 | 5183 | 188 | 108.72 | 0.243 | 3.5 | 98.0 |
| | 115.0 | 45.77 | 5160 | 344 | 114.11 | 0.467 | 6.8 | 98.0 |
| | 115.0 | 45.27 | 5109 | 483 | 119.06 | 0.685 | 10.0 | 98.1 |
| | 115.0 | 44.87 | 5061 | 611 | 122.99 | 0.894 | 13.2 | 98.1 |
| | 115.0 | 45.35 | 5119 | 726 | 128.82 | 1.114 | 16.2 | 98.1 |
| | 115.0 | 45.62 | 5167 | 832 | 137.91 | 1.366 | 19.7 | 98.5 |
| | 115.0 | 45.64 | 5181 | 929 | 145.33 | 1.607 | 23.1 | 98.7 |
| | 115.0 | 45.57 | 5185 | 1016 | 152.28 | 1.842 | 26.5 | 98.9 |
| | 115.0 | 45.28 | 5167 | 1096 | 156.96 | 2.048 | 29.6 | 99.2 |
| | 115.0 | 45.14 | 5162 | 1170 | 160.80 | 2.239 | 32.4 | 99.4 |
| | 115.0 | 39.04 | 4073 | 1232 | 101.28 | 1.486 | 27.2 | 90.7 |
| | 115.0 | 29.80 | 2687 | 1270 | 58.43 | 0.883 | 24.5 | 78.4 |
| | 115.0 | 27.94 | 2540 | 1336 | 60.93 | 0.969 | 28.5 | 79.0 |
| | 115.0 | 26.25 | 2419 | 1395 | 64.30 | 1.068 | 32.9 | 80.1 |
| | 115.0 | 24.58 | 2290 | 1446 | 66.59 | 1.147 | 37.4 | 81.0 |
| | 115.0 | 22.87 | 2156 | 1492 | 67.47 | 1.198 | 41.5 | 82.0 |
| | 115.0 | 21.17 | 2012 | 1531 | 67.75 | 1.235 | 45.8 | 82.6 |
| | 115.0 | 19.51 | 1864 | 1567 | 66.40 | 1.239 | 49.6 | 83.1 |
| | 115.0 | 17.88 | 1713 | 1599 | 64.13 | 1.221 | 53.1 | 83.3 |
| | 115.0 | 16.22 | 1551 | 1628 | 60.75 | 1.177 | 56.6 | 83.2 |
| | 115.0 | 14.61 | 1388 | 1654 | 56.43 | 1.111 | 59.7 | 82.6 |
| | 115.0 | 12.99 | 1217 | 1678 | 51.11 | 1.021 | 62.6 | 81.4 |
| | 115.0 | 11.45 | 1044 | 1701 | 44.59 | 0.903 | 64.5 | 79.3 |
| | 115.0 | 9.94 | 864 | 1723 | 37.17 | 0.762 | 65.8 | 75.6 |
| | 115.0 | 8.55 | 683 | 1743 | 28.77 | 0.597 | 65.2 | 69.4 |
| | 115.0 | 7.38 | 500 | 1762 | 19.48 | 0.409 | 61.0 | 58.9 |
| | 115.0 | 6.53 | 310 | 1781 | 8.89 | 0.189 | 45.4 | 41.2 |
| | 115.0 | 6.29 | 147 | 1798 | 0.00 | 0.000 | 0.0 | 20.3 |

DRAWING NO. PAGE 1 of 8 REV.
3K199BF -

Dayton Electric Mfg. Co. Lake Forest, IL 60045 USA

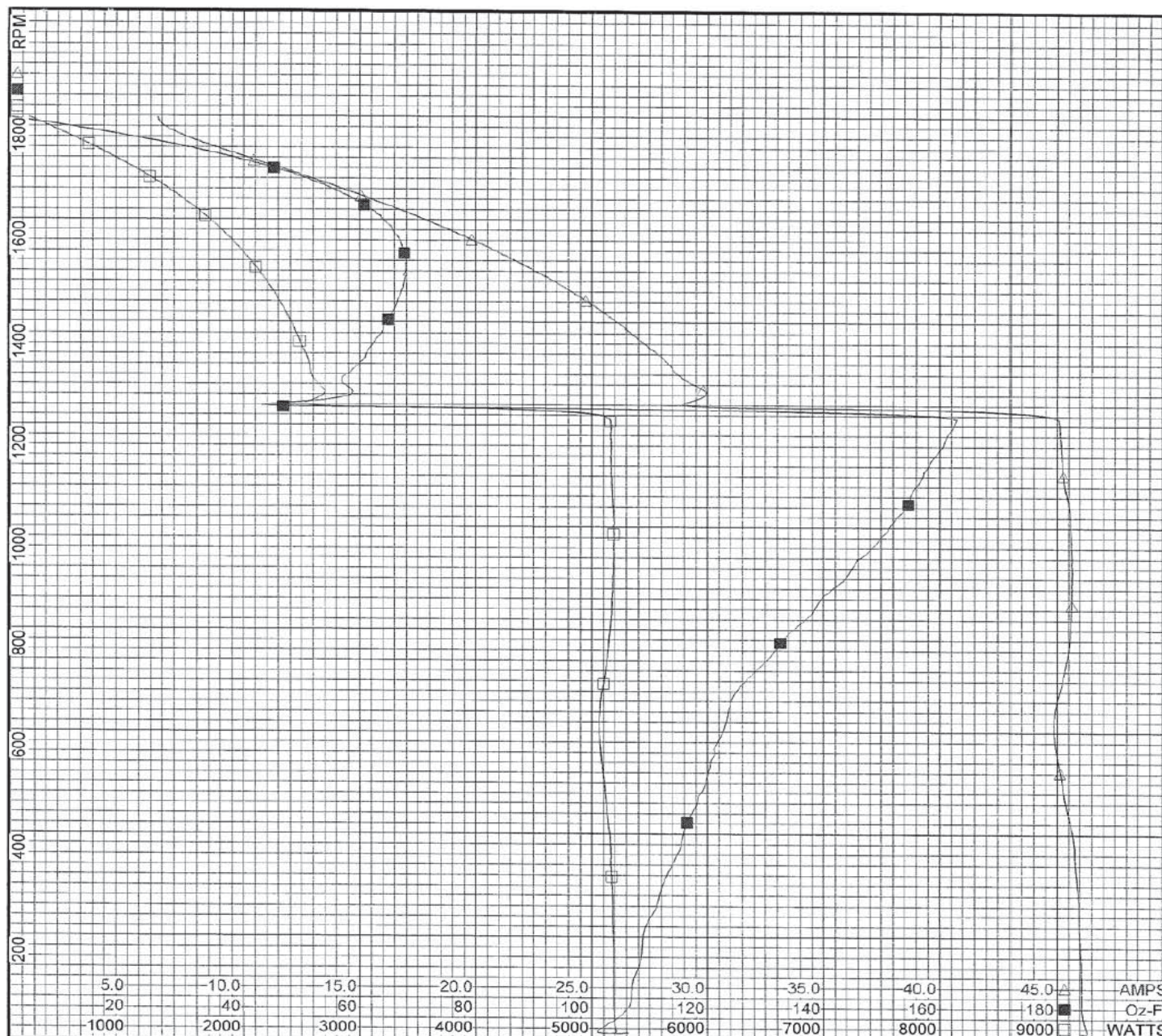
Performance Data



3K199BF

REV.

-



| | | |
|-------------|-------------|------|
| DRAWING NO. | PAGE 2 of 8 | REV. |
| 3K199BF | | - |

Dayton Electric Mfg. Co. Lake Forest, IL 60045 USA

Performance Data



3K199BF REV.
-

Dayton Manufacturing Company

Motor Description

Model: C063CXJBU113801
 Motor ID: Motor #1
 Poles: 4
 Volts: 115/230
 Frequency: 60&50
 HP: 1/2
 Speed: 1725&1425
 Phase: 1
 Protector: CEJ68CY

Test Conditions

Test Type: Run Run Cap: 0
 Test Number: 3 Start Cap: 0µfd
 Poles: 4
 Volts: 115 Tested: 3/2/2012 1:45:46 PM
 Hz: 60
 Rotation:
 Special Cond: 2 Line Gear Ratio: 1:1
 Speed Conn: Bearing Friction: -0.63 Oz-Ft
 TestBoard: Windage Torque: -1.83 Oz-Ft
 Amtps Performance Fixture #3

| Special Points | Vline | Iline | Watts | Speed | Tq (Oz-ft) | HP | Eff (%) | PF (%) |
|----------------|-------|-------|-------|-------|------------|-------|---------|--------|
| | 115.0 | 5.95 | 149 | 1790 | 0.00 | 0.000 | 0.0 | 21.8 |
| | 115.0 | 6.18 | 282 | 1769 | 8.01 | 0.169 | 44.6 | 39.7 |
| 16.4 OZ-FT | 115.0 | 6.70 | 425 | 1764 | 16.40 | 0.344 | 60.4 | 55.1 |
| 0.5 HP | 115.0 | 7.65 | 572 | 1753 | 23.97 | 0.500 | 65.2 | 65.1 |
| 24.3 OZ-FT | 115.0 | 7.69 | 578 | 1752 | 24.30 | 0.507 | 65.4 | 65.4 |
| | 115.0 | 7.71 | 580 | 1752 | 24.42 | 0.509 | 65.4 | 65.5 |
| 0.625 HP | 115.0 | 8.50 | 695 | 1740 | 30.17 | 0.625 | 67.1 | 71.1 |
| | 115.0 | 9.16 | 781 | 1732 | 34.47 | 0.711 | 67.8 | 74.2 |
| 1725 RPM | 115.0 | 9.60 | 838 | 1725 | 36.76 | 0.755 | 67.2 | 75.9 |
| | 115.0 | 10.68 | 971 | 1711 | 42.59 | 0.867 | 66.6 | 79.0 |
| | 115.0 | 12.36 | 1157 | 1688 | 49.86 | 1.002 | 64.6 | 81.4 |
| | 115.0 | 14.05 | 1337 | 1665 | 55.84 | 1.107 | 61.7 | 82.8 |
| | 115.0 | 15.69 | 1506 | 1640 | 60.87 | 1.188 | 58.9 | 83.5 |
| | 115.0 | 17.33 | 1666 | 1613 | 64.84 | 1.245 | 55.7 | 83.6 |
| | 115.0 | 19.03 | 1827 | 1583 | 67.74 | 1.276 | 52.1 | 83.5 |
| | 115.0 | 20.64 | 1971 | 1551 | 69.38 | 1.281 | 48.5 | 83.0 |
| BDT OZ-FT | 115.0 | 22.07 | 2095 | 1520 | 70.03 | 1.267 | 45.1 | 82.5 |
| | 115.0 | 22.23 | 2108 | 1516 | 70.00 | 1.264 | 44.7 | 82.5 |
| | 115.0 | 23.81 | 2234 | 1479 | 69.43 | 1.223 | 40.8 | 81.6 |
| | 115.0 | 25.30 | 2349 | 1438 | 68.18 | 1.167 | 37.1 | 80.7 |
| | 115.0 | 26.72 | 2451 | 1394 | 65.87 | 1.093 | 33.3 | 79.8 |
| | 115.0 | 28.08 | 2549 | 1346 | 62.55 | 1.002 | 29.3 | 78.9 |
| | 115.0 | 29.36 | 2630 | 1294 | 58.73 | 0.905 | 25.7 | 77.9 |
| | 115.0 | 30.57 | 2704 | 1237 | 54.14 | 0.797 | 22.0 | 76.9 |
| | 115.0 | 31.69 | 2766 | 1175 | 48.95 | 0.685 | 18.5 | 75.9 |
| | 115.0 | 32.73 | 2818 | 1110 | 43.17 | 0.571 | 15.1 | 74.9 |
| | 115.0 | 33.67 | 2863 | 1038 | 36.73 | 0.454 | 11.8 | 73.9 |
| | 115.0 | 34.55 | 2894 | 961 | 29.73 | 0.340 | 8.8 | 72.8 |
| | 115.0 | 35.34 | 2921 | 879 | 21.57 | 0.226 | 5.8 | 71.9 |
| | 115.0 | 36.04 | 2930 | 789 | 13.00 | 0.122 | 3.1 | 70.7 |
| | 115.0 | 36.48 | 2910 | 694 | 5.50 | 0.045 | 1.2 | 69.4 |
| | 115.0 | 39.27 | 3440 | 596 | 34.49 | 0.245 | 5.3 | 76.2 |
| | 115.0 | 44.60 | 5031 | 512 | 114.88 | 0.701 | 10.4 | 98.1 |
| | 115.0 | 45.32 | 5120 | 399 | 113.82 | 0.541 | 7.9 | 98.2 |
| | 115.0 | 45.67 | 5145 | 268 | 109.51 | 0.350 | 5.1 | 98.0 |
| | 115.0 | 45.86 | 5166 | 131 | 107.42 | 0.167 | 2.4 | 97.9 |

DRAWING NO. PAGE 3 of 8 REV.
 3K199BF -

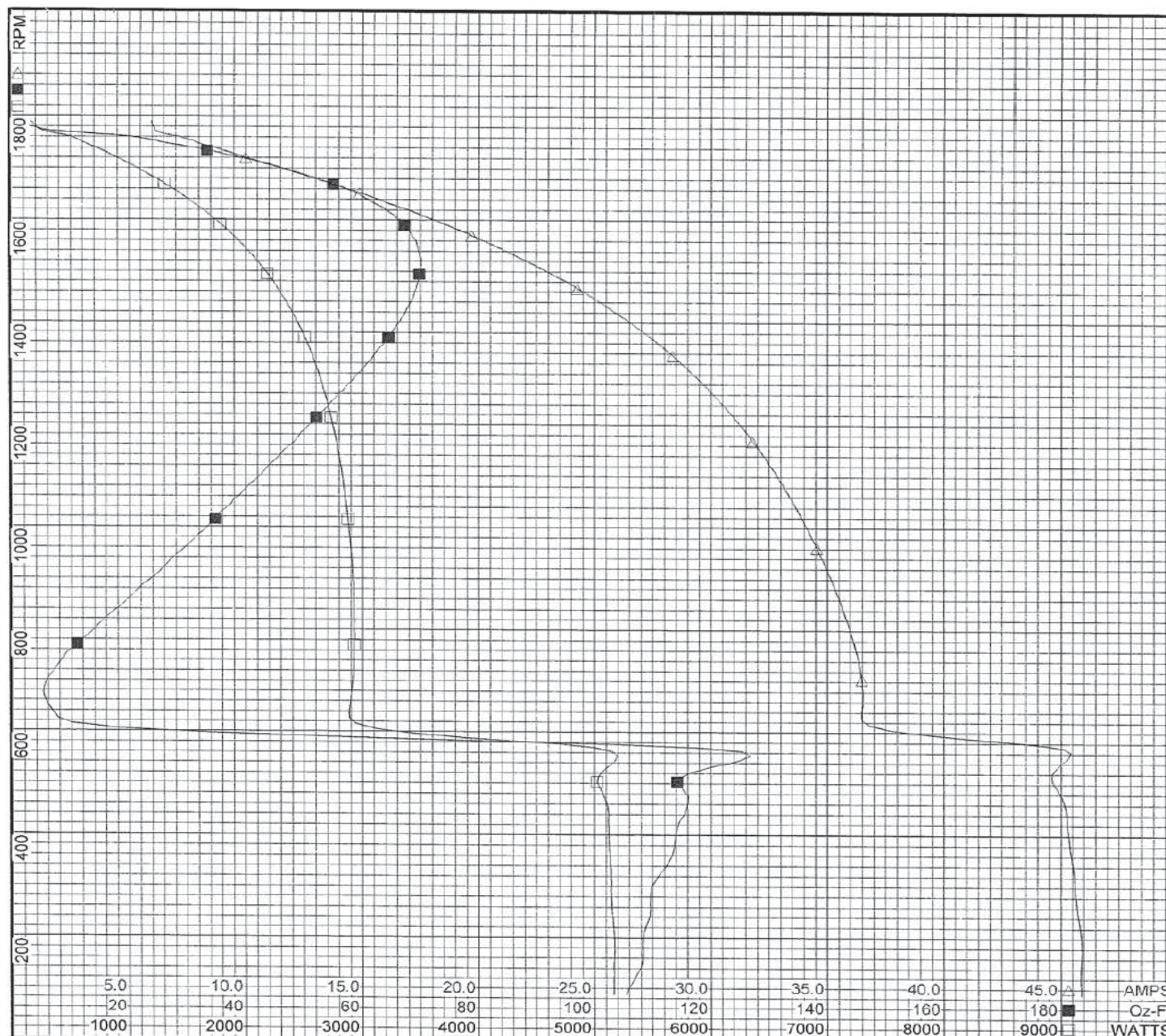
Performance Data



3K199BF

REV.

-



| | | |
|-------------|-------------|------|
| DRAWING NO. | PAGE 4 of 8 | REV. |
| 3K199BF | | - |

Dayton Electric Mfg. Co. Lake Forest, IL 60045 USA

Performance Data



3K199BF REV.
-

Dayton Manufacturing Company

Motor Description

Model: C063CXJBU113801
 Motor ID: Motor #1
 Poles: 4
 Volts: 115/230
 Frequency: 60&50
 HP: 1/2
 Speed: 1725&1425
 Phase: 1
 Protector: CEJ68CY

Test Conditions

Test Type: Start Run Cap: 0
 Test Number: 11 Start Cap: 0µfd
 Poles: 4
 Volts: 230 Tested: 3/2/2012 12:36:06 PM
 Hz: 60
 Rotation:
 Special Cond: 2 line Gear Ratio: 1:1
 Speed Conn: Bearing Friction: -0.56 Oz-Ft
 TestBoard: Amtps Performance Fixture #3 Windage Torque: -1.70 Oz-Ft

| Special Points | Vline | Iline | Watts | Speed | Tq (Oz-ft) | HP | Eff (%) | PF (%) |
|----------------|-------|-------|-------|-------|------------|-------|---------|--------|
| PUT OZ-FT | 230.0 | 23.82 | 5137 | 8 | 89.71 | 0.009 | 0.1 | 93.8 |
| | 230.0 | 23.82 | 5137 | 8 | 89.71 | 0.009 | 0.1 | 93.8 |
| | 230.0 | 23.86 | 5152 | 38 | 90.24 | 0.040 | 0.6 | 93.9 |
| | 230.0 | 23.75 | 5123 | 189 | 93.70 | 0.211 | 3.1 | 93.8 |
| | 230.0 | 23.59 | 5102 | 344 | 99.91 | 0.409 | 6.0 | 94.0 |
| | 230.0 | 23.31 | 5058 | 483 | 104.31 | 0.600 | 8.9 | 94.3 |
| | 230.0 | 23.04 | 5009 | 609 | 105.82 | 0.768 | 11.4 | 94.5 |
| | 230.0 | 23.18 | 5040 | 725 | 109.82 | 0.948 | 14.0 | 94.6 |
| | 230.0 | 23.23 | 5081 | 832 | 118.61 | 1.174 | 17.2 | 95.1 |
| | 230.0 | 23.13 | 5085 | 929 | 125.40 | 1.387 | 20.3 | 95.6 |
| | 230.0 | 23.01 | 5088 | 1017 | 131.92 | 1.597 | 23.4 | 96.2 |
| | 230.0 | 22.86 | 5084 | 1096 | 137.95 | 1.801 | 26.4 | 96.7 |
| | 230.0 | 22.69 | 5071 | 1169 | 141.92 | 1.975 | 29.1 | 97.1 |
| | 230.0 | 18.92 | 3797 | 1232 | 83.97 | 1.231 | 24.2 | 87.3 |
| | 230.0 | 14.87 | 2667 | 1276 | 58.58 | 0.890 | 24.9 | 78.0 |
| | 230.0 | 13.97 | 2535 | 1339 | 61.87 | 0.986 | 29.0 | 78.9 |
| | 230.0 | 13.13 | 2411 | 1397 | 65.14 | 1.084 | 33.5 | 79.8 |
| | 230.0 | 12.30 | 2285 | 1448 | 67.39 | 1.161 | 37.9 | 80.8 |
| | 230.0 | 11.43 | 2143 | 1493 | 68.46 | 1.217 | 42.4 | 81.5 |
| | 230.0 | 10.60 | 1999 | 1532 | 68.19 | 1.244 | 46.4 | 82.0 |
| | 230.0 | 9.77 | 1857 | 1567 | 67.01 | 1.250 | 50.2 | 82.6 |
| | 230.0 | 8.93 | 1703 | 1599 | 64.40 | 1.226 | 53.7 | 82.9 |
| | 230.0 | 8.11 | 1542 | 1629 | 61.06 | 1.184 | 57.3 | 82.6 |
| | 230.0 | 7.30 | 1379 | 1654 | 56.60 | 1.115 | 60.3 | 82.2 |
| | 230.0 | 6.49 | 1208 | 1679 | 51.27 | 1.025 | 63.3 | 80.9 |
| | 230.0 | 5.72 | 1035 | 1703 | 44.74 | 0.907 | 65.4 | 78.6 |
| | 230.0 | 4.98 | 865 | 1722 | 37.68 | 0.772 | 66.6 | 75.5 |
| | 230.0 | 4.30 | 686 | 1742 | 29.41 | 0.610 | 66.4 | 69.4 |
| | 230.0 | 3.64 | 487 | 1764 | 19.21 | 0.403 | 61.8 | 58.2 |
| | 230.0 | 3.20 | 289 | 1783 | 8.13 | 0.173 | 44.5 | 39.3 |
| | 230.0 | 3.07 | 153 | 1798 | 0.00 | 0.000 | 0.0 | 21.6 |

DRAWING NO. PAGE 5 of 8 REV.
 3K199BF -

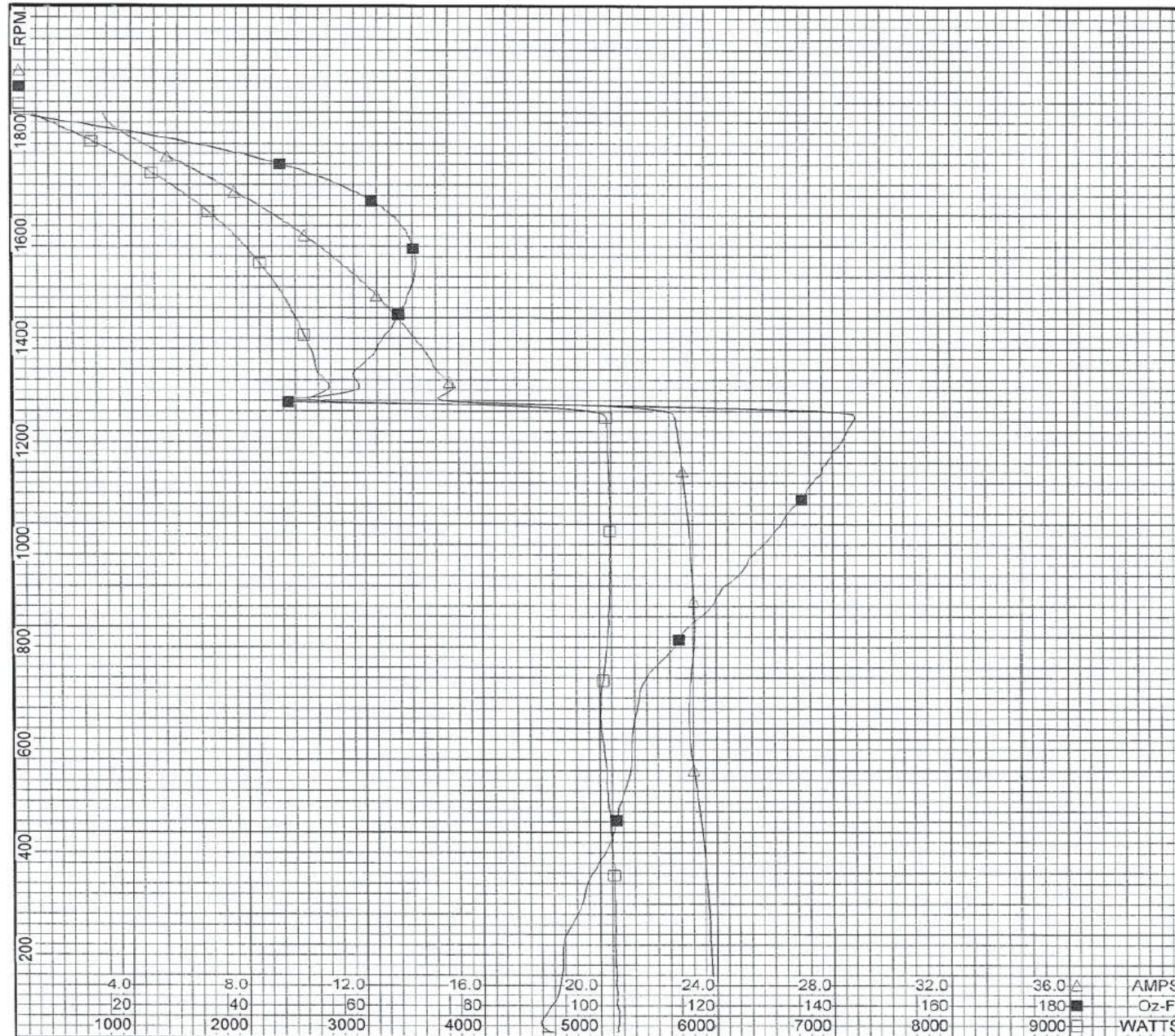
Performance Data



3K199BF

REV.

-



| | | |
|-------------|-------------|------|
| DRAWING NO. | PAGE 6 of 8 | REV. |
| 3K199BF | | - |

Dayton Electric Mfg. Co. Lake Forest, IL 60045 USA

Performance Data



3K199BF REV.
-

Dayton Manufacturing Company

Motor Description

Model: C063CXJBU113801
 Motor ID: Motor #1
 Poles: 4
 Volts: 115/230
 Frequency: 60&50
 HP: 1/2
 Speed: 1725&1425
 Phase: 1
 Protector: CEJ68CY

Test Conditions

Test Type: Run Run Cap: 0
 Test Number: 13 Start Cap: 0µfd
 Poles: 4
 Volts: 230 Tested: 3/2/2012 10:46:44 AM
 Hz: 60
 Rotation:
 Special Cond: 2 Line Gear Ratio: 1:1
 Speed Conn: Bearing Friction: -0.55 Oz-Ft
 TestBoard: Windage Torque: -1.64 Oz-Ft
 Amtps Performance Fixture #3

| Special Points | Vline | Iline | Watts | Speed | Tq(Oz-ft) | HP | Eff (%) | PF (%) |
|----------------|-------|-------|-------|-------|-----------|-------|---------|--------|
| | 230.0 | 2.97 | 129 | 1792 | 0.00 | 0.000 | 0.0 | 18.9 |
| | 230.0 | 3.18 | 333 | 1771 | 10.95 | 0.231 | 51.8 | 45.5 |
| 16.4 OZ-FT | 230.0 | 3.41 | 427 | 1761 | 16.40 | 0.344 | 60.1 | 54.4 |
| | 230.0 | 3.59 | 498 | 1753 | 20.42 | 0.426 | 63.8 | 60.3 |
| 0.5 HP | 230.0 | 3.79 | 566 | 1748 | 24.03 | 0.500 | 65.9 | 64.9 |
| 24.3 OZ-FT | 230.0 | 3.80 | 571 | 1748 | 24.30 | 0.506 | 66.0 | 65.2 |
| 0.625 HP | 230.0 | 4.24 | 690 | 1738 | 30.21 | 0.625 | 67.6 | 70.8 |
| | 230.0 | 4.40 | 730 | 1734 | 32.03 | 0.661 | 67.6 | 72.2 |
| 1725 RPM | 230.0 | 4.70 | 811 | 1725 | 35.67 | 0.732 | 67.4 | 75.0 |
| | 230.0 | 5.14 | 915 | 1713 | 40.39 | 0.824 | 67.1 | 77.5 |
| | 230.0 | 5.97 | 1110 | 1691 | 48.24 | 0.971 | 65.3 | 80.8 |
| | 230.0 | 6.79 | 1287 | 1667 | 54.48 | 1.081 | 62.6 | 82.4 |
| | 230.0 | 7.60 | 1453 | 1642 | 59.47 | 1.163 | 59.7 | 83.1 |
| | 230.0 | 8.42 | 1615 | 1616 | 63.64 | 1.224 | 56.5 | 83.4 |
| | 230.0 | 9.27 | 1774 | 1586 | 66.43 | 1.254 | 52.7 | 83.2 |
| | 230.0 | 10.06 | 1919 | 1556 | 68.54 | 1.269 | 49.3 | 82.9 |
| | 230.0 | 10.87 | 2059 | 1520 | 69.50 | 1.258 | 45.6 | 82.4 |
| BDT OZ-FT | 230.0 | 11.26 | 2125 | 1502 | 69.63 | 1.245 | 43.7 | 82.0 |
| | 230.0 | 11.66 | 2192 | 1484 | 69.39 | 1.226 | 41.7 | 81.8 |
| | 230.0 | 12.42 | 2312 | 1442 | 68.23 | 1.172 | 37.8 | 80.9 |
| | 230.0 | 13.13 | 2420 | 1399 | 66.22 | 1.102 | 34.0 | 80.2 |
| | 230.0 | 13.82 | 2514 | 1351 | 63.22 | 1.017 | 30.2 | 79.1 |
| | 230.0 | 14.47 | 2599 | 1299 | 59.42 | 0.919 | 26.4 | 78.1 |
| | 230.0 | 15.09 | 2676 | 1243 | 54.98 | 0.813 | 22.7 | 77.1 |
| | 230.0 | 15.66 | 2741 | 1182 | 49.86 | 0.702 | 19.1 | 76.1 |
| | 230.0 | 16.19 | 2793 | 1117 | 44.11 | 0.586 | 15.7 | 75.0 |
| | 230.0 | 16.67 | 2839 | 1046 | 37.94 | 0.472 | 12.4 | 74.0 |
| | 230.0 | 17.12 | 2876 | 969 | 31.03 | 0.358 | 9.3 | 73.0 |
| | 230.0 | 17.53 | 2903 | 888 | 22.99 | 0.243 | 6.2 | 72.0 |
| | 230.0 | 17.89 | 2914 | 799 | 14.59 | 0.139 | 3.6 | 70.8 |
| | 230.0 | 18.13 | 2900 | 704 | 6.79 | 0.057 | 1.5 | 69.5 |
| | 230.0 | 18.65 | 3091 | 605 | 18.26 | 0.132 | 3.2 | 72.1 |
| | 230.0 | 23.04 | 5028 | 517 | 103.38 | 0.637 | 9.4 | 94.9 |
| | 230.0 | 23.32 | 5084 | 413 | 101.44 | 0.498 | 7.3 | 94.8 |
| | 230.0 | 23.54 | 5093 | 282 | 99.28 | 0.334 | 4.9 | 94.1 |
| | 230.0 | 23.62 | 5103 | 144 | 93.97 | 0.161 | 2.4 | 93.9 |

DRAWING NO. PAGE 7 of 8 REV.
 3K199BF -

©2020 W.W. Grainger, Inc. This design may not be reproduced, modified or redistributed without written permission from W.W. Grainger, Inc.

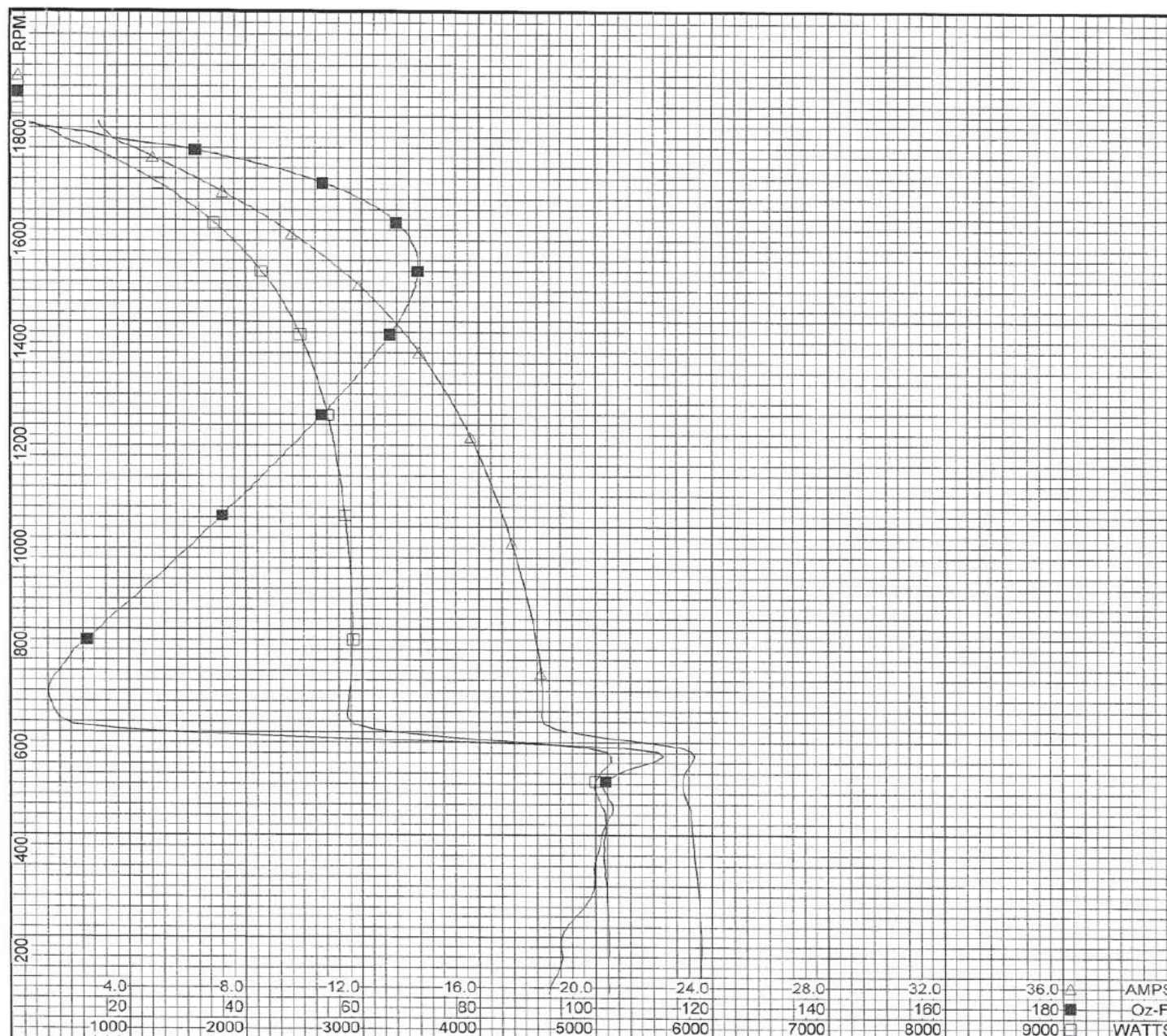
Performance Data



3K199BF

REV.

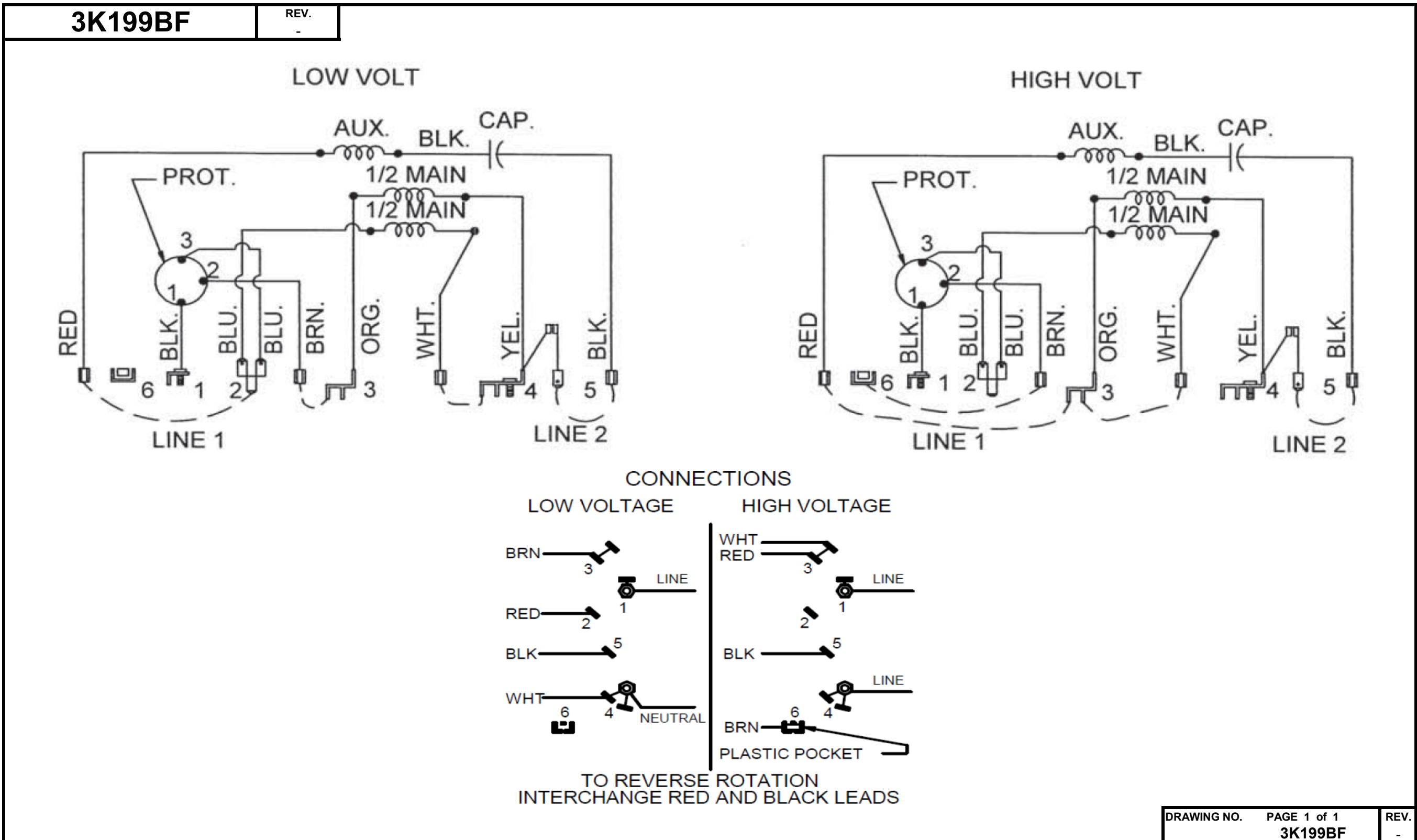
-



| | | |
|-------------|-------------|------|
| DRAWING NO. | PAGE 8 of 8 | REV. |
| 3K199BF | | - |

Dayton Electric Mfg. Co. Lake Forest, IL 60045 USA

Wiring Diagram



Dayton Electric Mfg. Co. Lake Forest, IL 60045 USA

Dayton[®]

BELT DRIVE FAN & BLOWER MOTOR

HP: 1/2

Part No 3K199BF



VOLTS: 115/230 & 110/220

AMPS: 7.7/3.8 & 9.1/4.6

PH: 1

RPM: 1725 & 1425

HZ: 60 & 50

DUTY: CONT

FR: 56

SF: 1.25

INS CL: B

KVA CODE: M

AMB: 40 °C

ENCL: ODP

SFA: 8.5/4.2 & 9.9/5.0

THERMALLY PROTECTED: AUTO

MFG. NO. PROT. CODE: AVG. F.L.
EFF.

MTR REF: C63CXJBU-1138

TO SAVE ENERGY REPLACE WITH: 30PT62



E37403

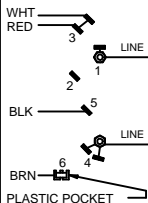
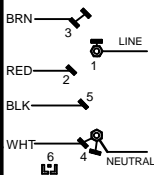


258501

**Disconnect Power Before Making Any
Electrical Connections or Changes****CONNECTIONS**

LOW VOLTAGE

HIGH VOLTAGE

TO REVERSE ROTATION
INTERCHANGE RED AND BLACK LEADS

Mfd for Dayton Electric Mfg. Co., Lake Forest, IL 60045 USA

Made in Mexico