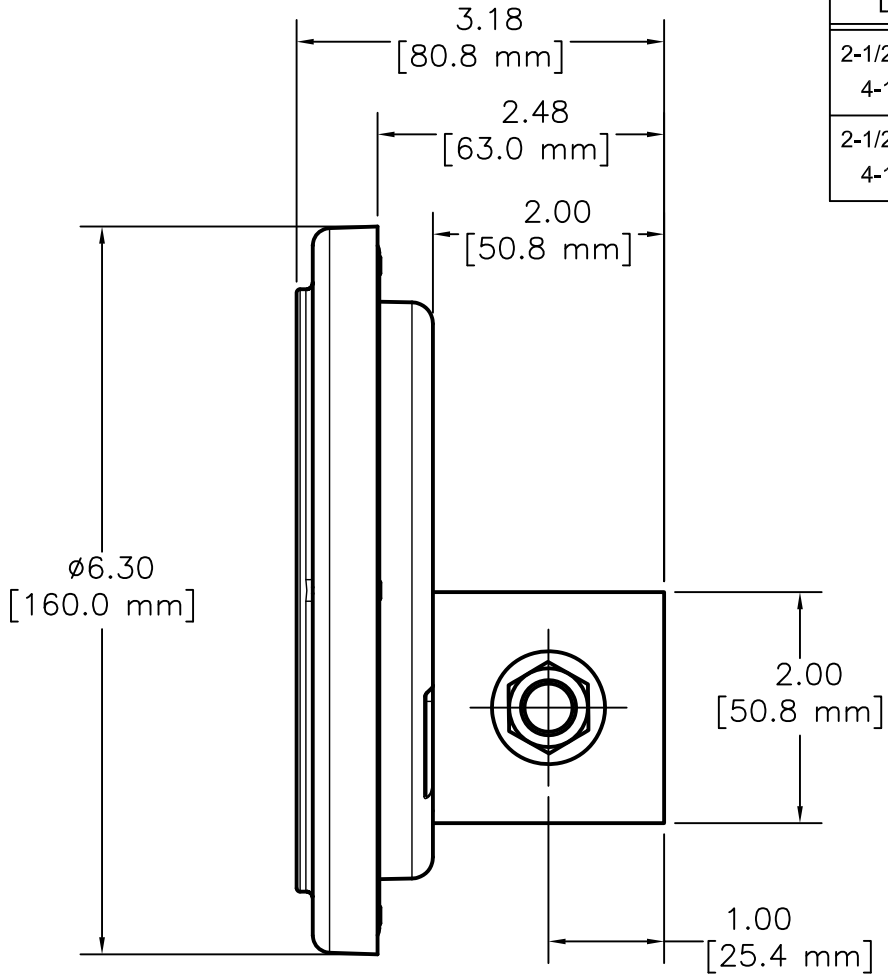
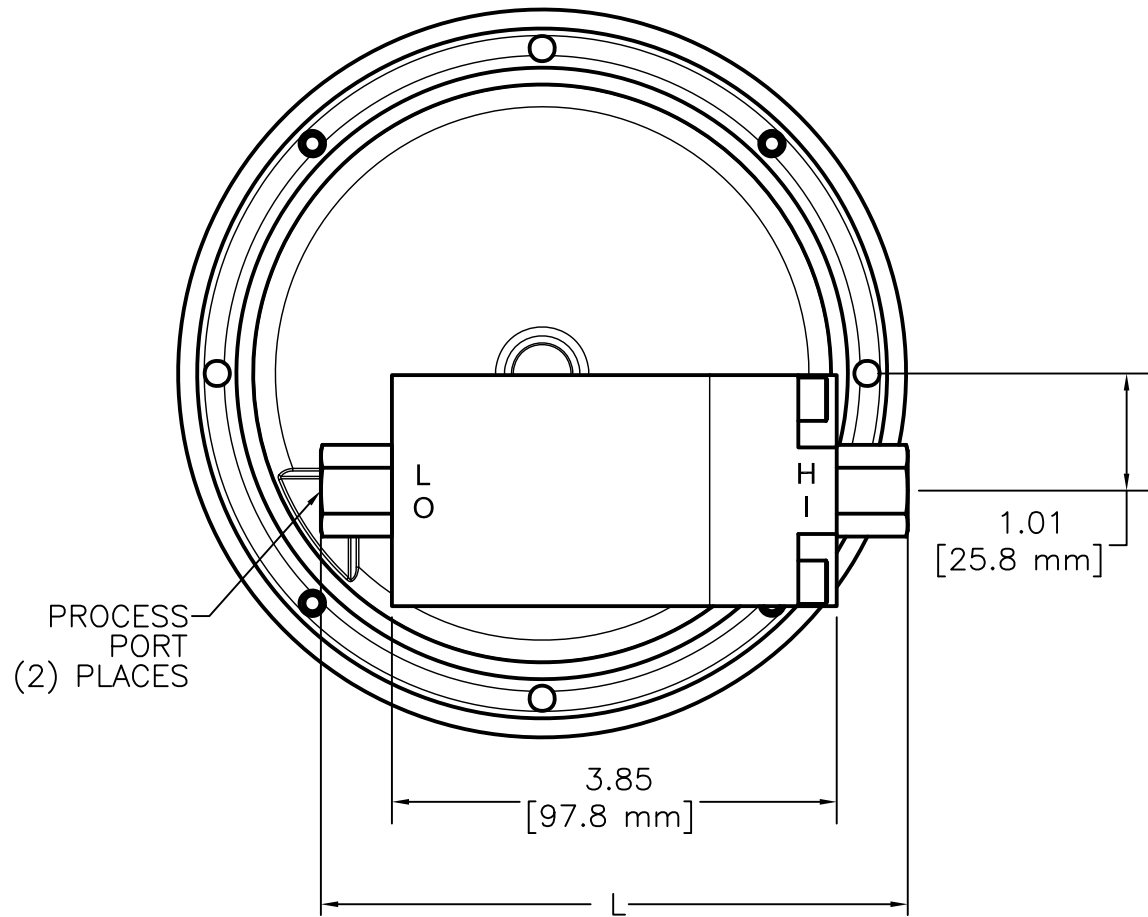


END CONNECTED PROCESS PORTS

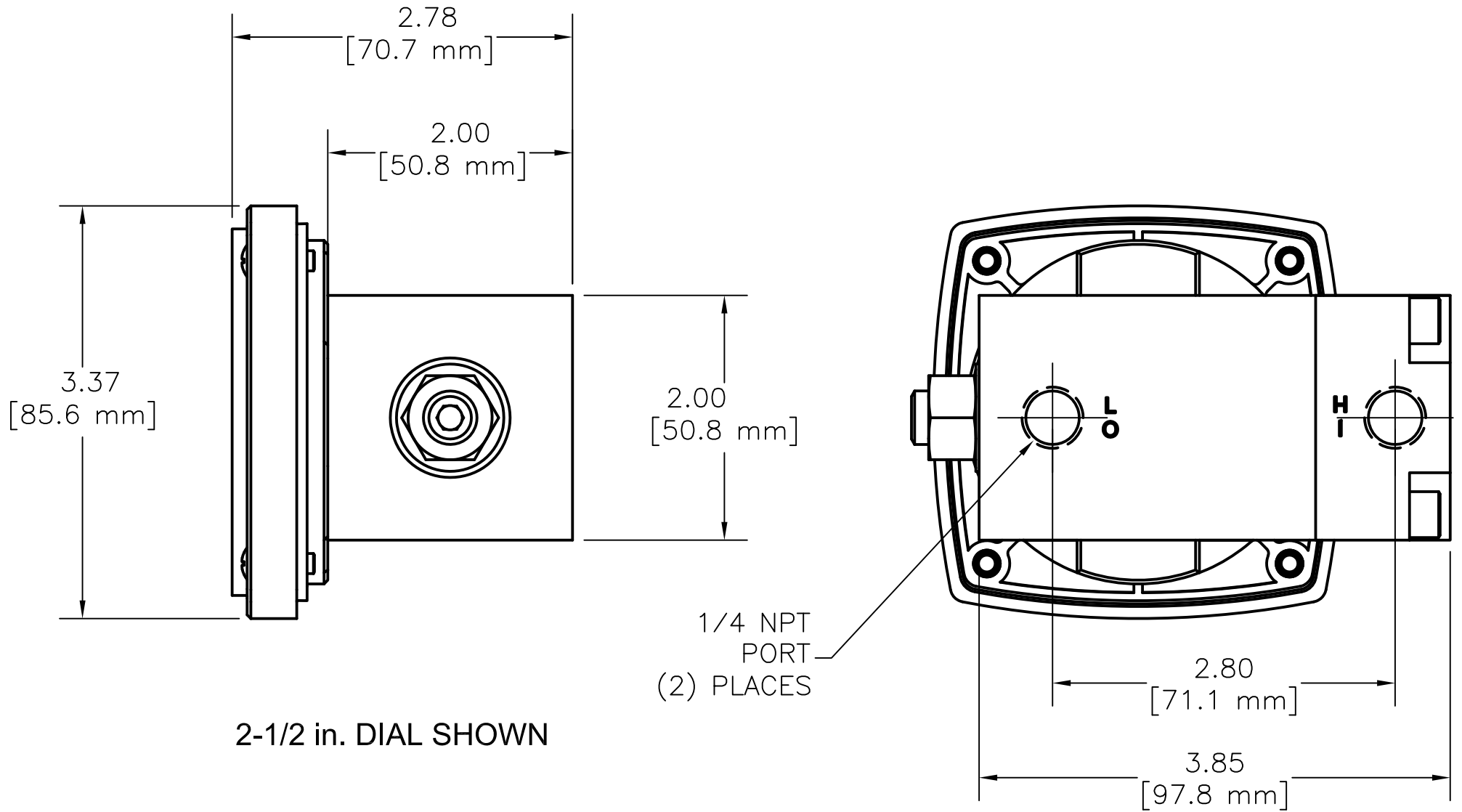
DIAL SIZE	END PORT PIPE THREAD	DIMENSION L Inch (mm)
2-1/2 in, 3-1/2 in, 4-1/2 in, 6 in.	1/4 NPT	5.07 (128.8)
2-1/2 in, 3-1/2 in, 4-1/2 in, 6 in.	1/2 NPT	6.82 (173.1)



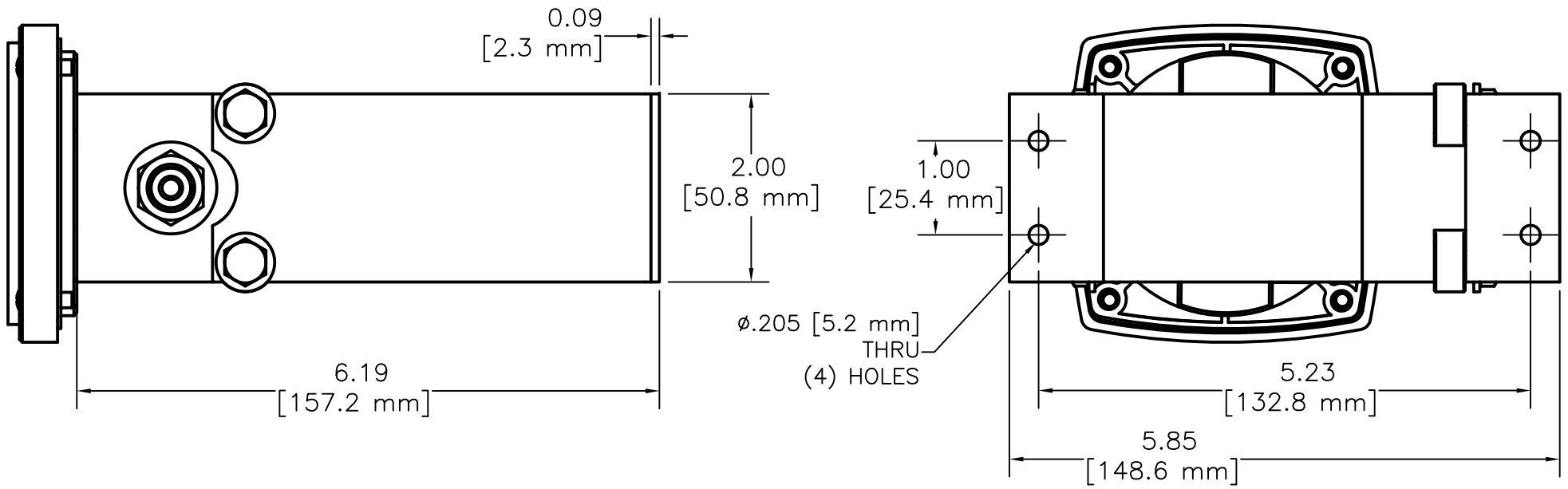
4-1/2 in. DIAL SHOWN



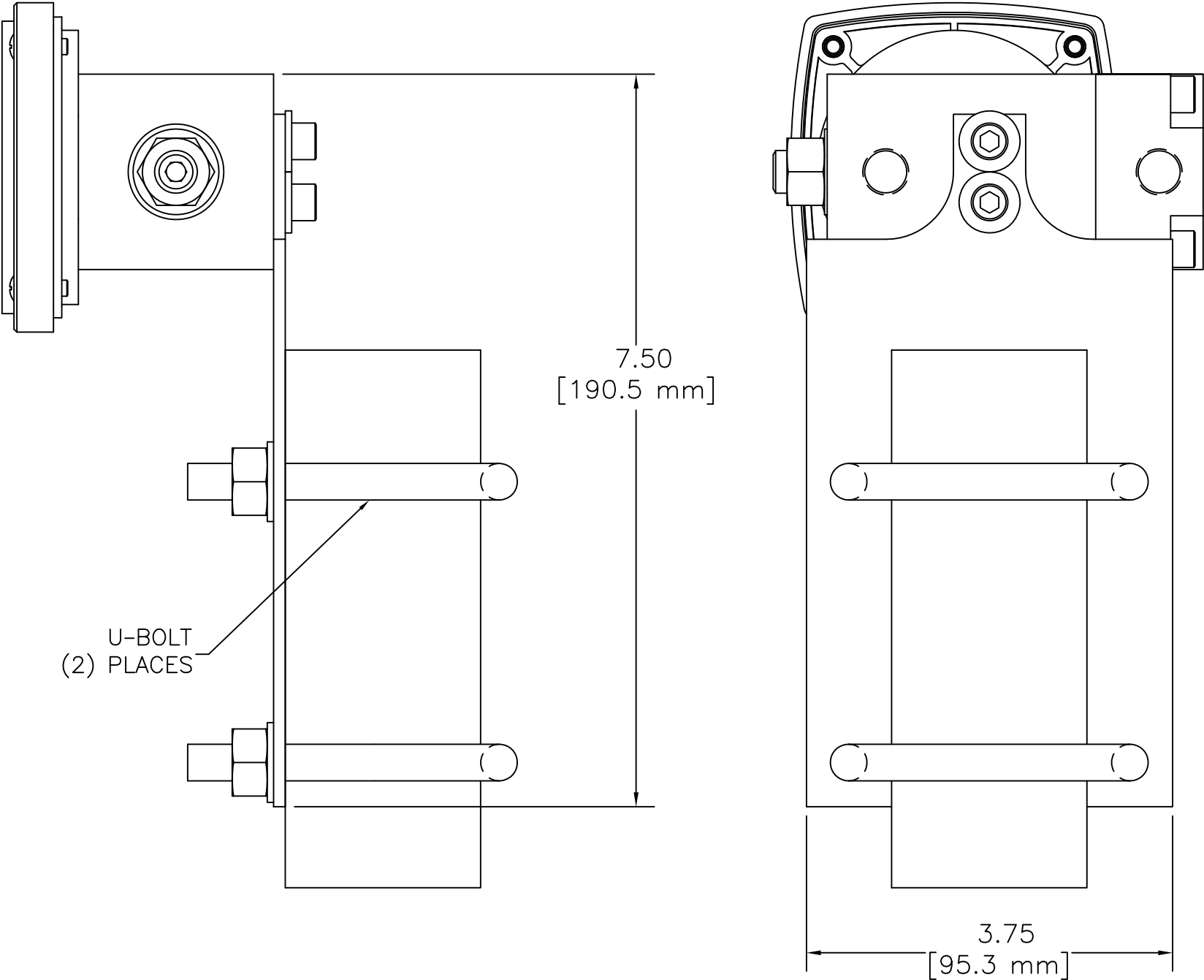
BACK CONNECTED PROCESS PORTS



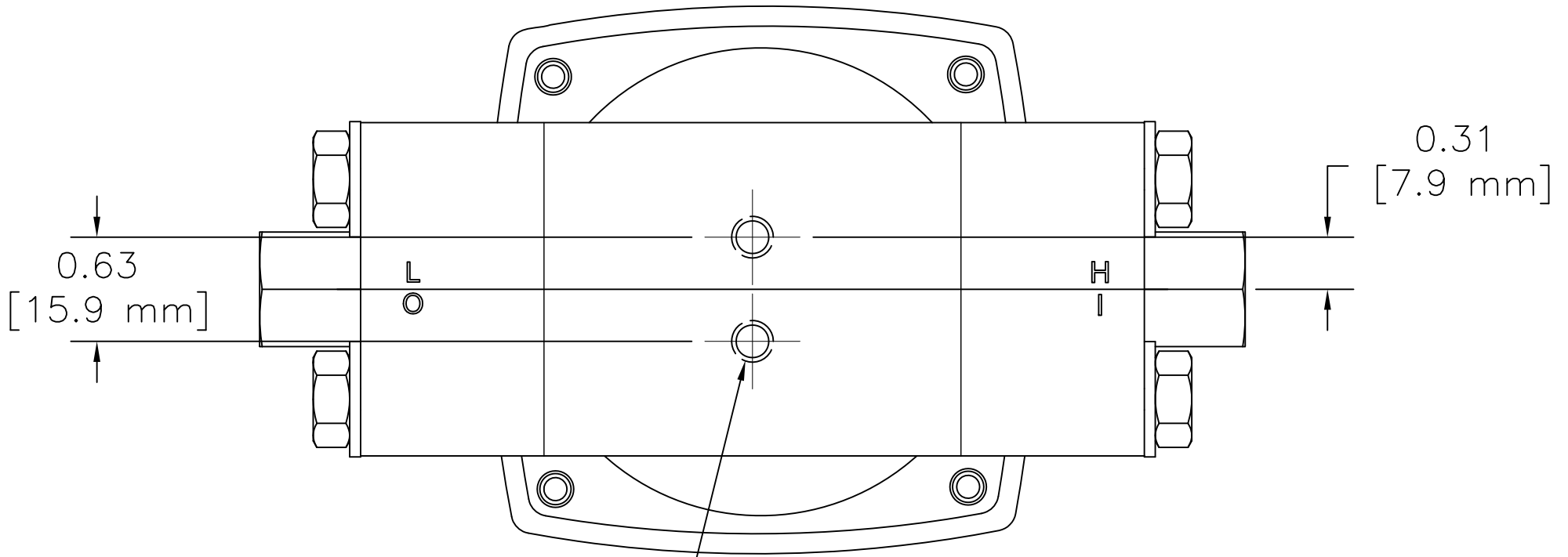
WALL MOUNT BRACKET



2 INCH PIPE MOUNT (FOR VERTICAL OR HORIZONTAL PIPE)



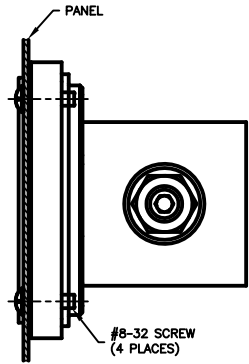
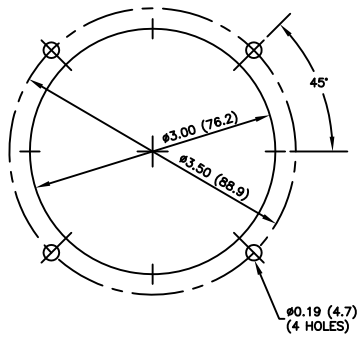
1/4-20 UNC BACK MOUNTING HOLES



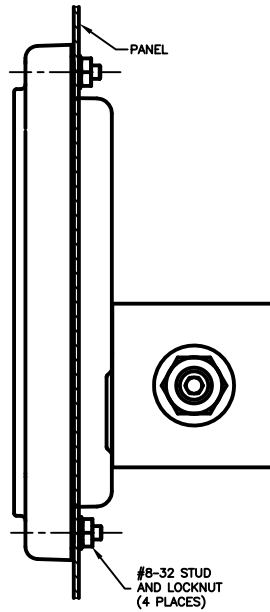
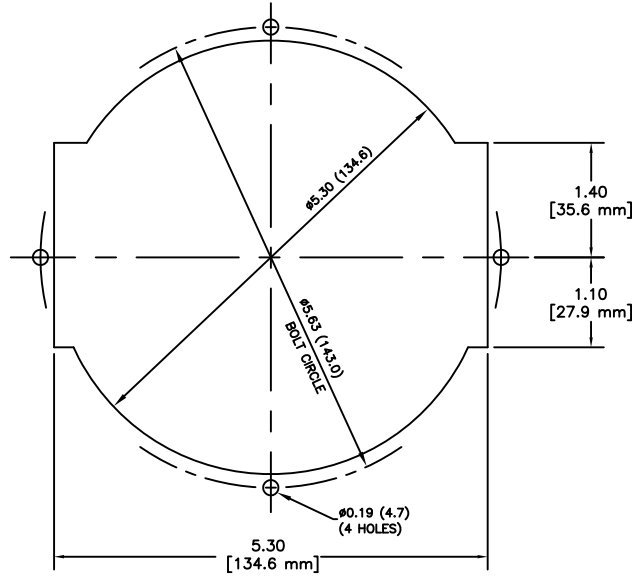
1/4-20 UNC
(5) THREADS
(2) HOLES

MODEL 140 AND 142 PANEL CUT-OUT DIMENSIONS

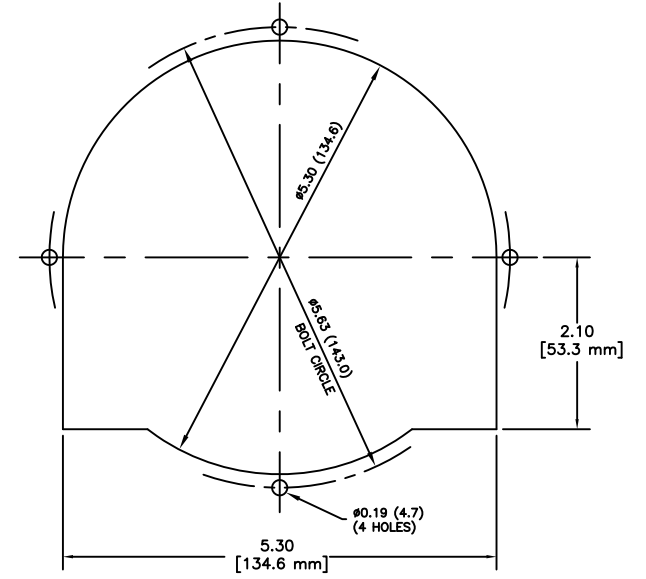
MODEL 140 AND 142
2-1/2 in. DIAL PANEL CUT-OUT



MODEL 140
4-1/2 in. DIAL PANEL CUT-OUT



MODEL 142
4-1/2 in. DIAL PANEL CUT-OUT



MODEL 140 AND 142
6 in. DIAL PANEL CUT-OUT

