

## Straight Blade Devices

15A, 250V, 2 Pole, 3 Wire Grounding

# HBL<sup>®</sup> Extra Heavy Duty MAX, Specification Grade, Duplex Receptacle

# HUBBELL

## Features

- Deep nylon body design delivers increased impact resistance
- One-piece brass integral ground strap
- Finder Groove Face
- Deep body design with circuit ID face

## Ordering Information

Description	Device Color	UPC Number	Catalog Number
Deep body design with circuit ID face. Back and side wired.	Ivory	783585435589	HBL5662I

## Listings

UL Listed to UL498 File No. E2186  
Certified to CSA 22.2, No. 42 File 285  
NEMA<sup>®</sup> WD-6 Compliant  
NEMA<sup>®</sup> WD-6 Compliant

## Specifications

Face	Nylon
Base	PBT
Power Contacts	.036 in. (.9) Brass
Wire Clamps	.031 in. (.8) Brass
Clamping Plate	Nickel plated brass
Terminal Screws	Plated brass
Mounting Strap	.050 in. (1.3) Brass
Automatic Self-grounding Clip	Stainless steel
Mounting Screws	Zinc plated steel

## Performance

### Electrical

Current Interrupting	Certified for current interrupting at full rated current
Dielectric Voltage	Withstands 2,000V minimum

### Mechanical

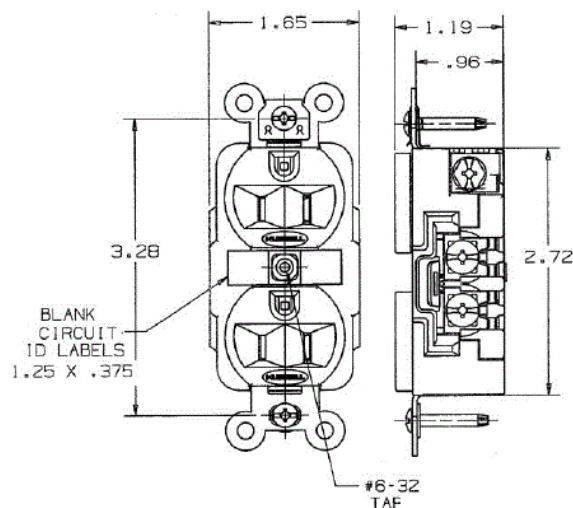
Product Identification	Ratings are a permanent part of the device
Terminal Accommodation	#14-#10 AWG copper stranded or solid conductor only
Terminal Identification	Terminals identified in accordance with UL 498 and CSA

### Environmental

Flammability	Top: UL 94V-2, Base: UL 94V-0
Operating Temperatures	Maximum continuous 75°C; minimum -40°C (w/o impact)



15A 250V  
NEMA 6-15R  
UL CSA  
1.5 HP



## Complementary Products

Wallplate or Weatherproof Cover      Duplex Opening

## Online Resources

Customer Sales Drawings  
eCatalog  
Installation Instructions

Dimensions in Inches (mm)

Hubbell Wiring Device-Kellems • Hubbell Incorporated (Delaware) • 40 Waterview Drive • Shelton, CT 06484

Phone (800) 288-6000 • Fax (800) 255-1031 • Specifications subject to change without notice.

