



INSTALLATION INSTRUCTIONS

• Large Pipe Ladder Safety Gate Adapter Brackets



To Contact PS DOORS:

By Mail: PS DOORS
Safety Products Group
1150 S. 48th Street
Grand Forks, ND 58201

By Fax: 1-701-746-8340

Website: www.psdors.com

By Phone: Phone 1-701-746-4519
Toll Free 1-877-446-1519

By Email: 4psinfo@psdoors.com

NOTICE This product is designed to work with the Ladder Safety Gate for various mounting applications. Once adapter brackets are installed refer to the Ladder Safety Gate O&M Manual for proper installation of the Ladder Safety Gate. Failure to do so may result in product failure.

Adapter Bracket Kit Includes:

LSG-LP2-2204GAL and LSG-LP2-2204PCY
The LSG;Rail Adapt Clamp is the only part different between the GAL and PCY Kit

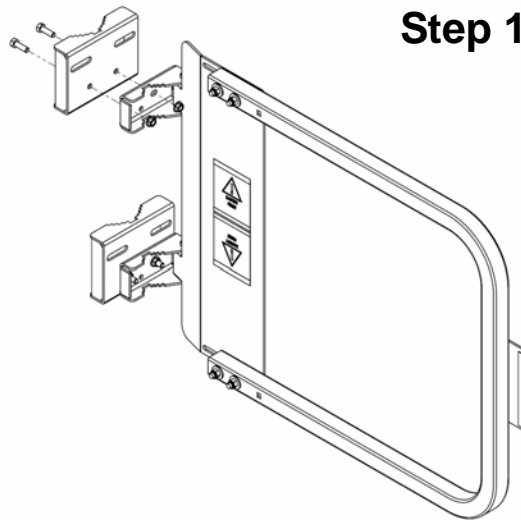
Item #	Part #	DESCRIPTION	QTY.
501001	LSG; Rail Adapt Clamp-GAL	4	
501003	or LSG; Rail Adapt Clamp-PCY	4	
501087	Nut;Flange 5/16"18Gr2Zn	4	
500422	Bolt;Hex5/16"18X1Gr5Zn	4	
501947	Washer; Flat 3/8"Zn	8	
500456	Bolt;Tap3/8"16x6Gr5Zn	4	
501120	Nut;Nylock 3/8"16 Zn	4	

LSG-LP2-2204SST

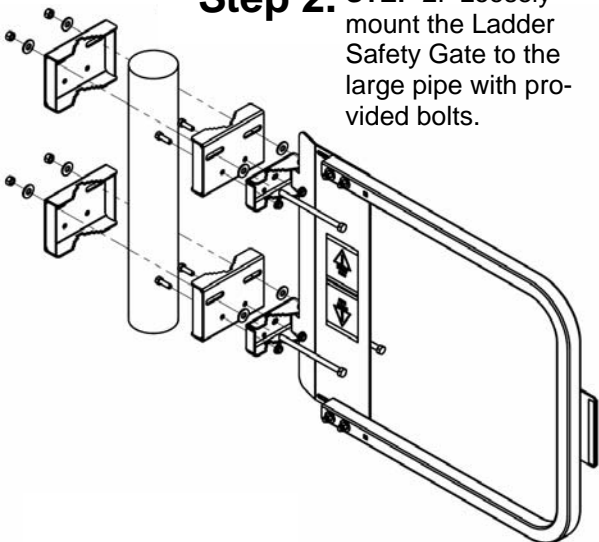
502127	LSG; Rail Adapt Clamp-SST	4	
501088	Nut;Flange 5/16"18 SS	4	
500423	Bolt;Hex5/16"18X1SS	4	
501945	Washer; Flat 3/8"SS	8	
502152	Bolt;Tap3/8"16x6SST	4	
501121	Nut;Nylock 3/8"16 SS	4	

*Quantities for Large Gates (LSG-LP3-2204XXX) will include a total of three (3) Large Pipe connections (drawing shows two).

Step 1. STEP 1. Attach Large Pipe adapter bracket to the Ladder Safety Gate mounting bracket with provided bolts.



Step 2. STEP 2. Loosely mount the Ladder Safety Gate to the large pipe with provided bolts.



Step 3. STEP 3. Adjust the Ladder Safety Gate so the top of the gate is 42' above platform/walking surface. Tighten all bolts. If more than 1/4" of thread extends past the nylock nut, trim to 1/4".

