



# Mobile-SHOP

MOBILE MAINTENANCE SYSTEM

In use by Fortune 500 Companies in multiple industries the Mobile-Shop system is proven to:



- Increase productivity by 36%\*
- Save an average of \$17,490\*
- Recapture 148 labor hours\*
- Return your investment in an average of 2.5 months\*

per employee, per year



## Work SMARTER. Not HARDER.

\*Based on general maintenance wage data from Salary.com and results of The Ohio State University Department of Integrated Systems Engineering Study of the Mobile-Shop System in use Feb-July 2009.

# ONE SYSTEM. ONE STANDARD.



**PM Cart**  
Mfr. Model #MS-CPMC  
Grainger No. 4HFZ3  
Mfr. Model #MS-CPMC-ND  
Grainger No. 4HFZ9



**HT Engineering Cart**  
Mfr. Model #MS-CEC  
Grainger No. 4HFZ2  
Mfr. Model #MS-CEC-ND  
Grainger No. 4HFZ8



**SD Express Cart**  
Mfr. Model #MS-SD-CEC  
Grainger No. 53PC90  
Mfr. Model #MS-SD-CEC-VSE  
Grainger No. 53PC89



**Capacity Cart**  
Mfr. Model #MS-Capacity  
Grainger No. 53PC97



**H30 Cart**  
Mfr. Model #MS-H30  
Grainger No. 53PC93  
Mfr. Model #MS-H30-ND  
Grainger No. 53PC94



**Tool Bag**  
Mfr. Model #MS-CTB  
Grainger No. 4HFZ4

## THE **Mobile-SHOP** ADVANTAGE MOBILE MAINTENANCE SYSTEM

### Increased Asset Value

- Superior repairs and less deferred maintenance
- Lower operating costs through increased efficiency
- Enhanced professionalism and company image

### Increased productivity

- Technicians/engineers will each achieve a 36% productivity increase\*

### Reduced costs in hiring and retaining great technicians/engineers

- Attract and retain the best technicians/engineers
- Increase the effectiveness of your maintenance team
- Reduce cost of hiring and training

### Customer service

- Bring a new and impressive level of professionalism to your maintenance operations
- Increase your company's value in the eyes of your customers, employees, and owners



**3-Drawer Clip-On Unit**  
\*MS-SD-CLPDR (No Vise)  
\*MS-SD-CLPDR-VSE  
(With Vise)



**Light Bulb Accessory Kit**  
\*MS-HT/SD-BAK



**Parts Resupply Center**  
Mfr. Model #MS-PRC  
Grainger No. 4HFZ5



**Cart Locker**  
Mfr. Model #MS-PMCL  
Grainger No. 39CE51  
Mfr. Model #MS-ECL  
Grainger No. 4HFZ7



**Golf Car Utility Bed**  
Mfr. Model #MS-GCUB  
Grainger No. 4HFZ6

\*Items available through Grainger Sourcing only.

\*Based on general maintenance wage data from Salary.com and results of The Ohio State University Department of Integrated Systems Engineering Study of the Mobile-Shop System in use Feb-July 2009.

# COMPANY WIDE.



## THE **Mobile-SHOP** ADVANTAGE MOBILE MAINTENANCE SYSTEM

### Better Inventory Control

- Simple accountability creates clear responsibility, which means tools no longer “disappear”
- Stop paying your technicians/engineers to look for their tools (far more expensive than the tool itself).

### The Power of Company-Wide Standardization

Imagine the rewards to your company when every tech at every property is using the same highly efficient, standardized maintenance system

### Improved Safety and Security

The superior organization, accountability and anti-theft features of the Mobile-Shop System promote a safer and more secure environment for your employees and customers

### More Effective Management and Training

The Mobile-Shop System provides your managers with effective new tools and methods that promote high employee morale, company loyalty and success

# A LETTER FROM THE CEO

---

As CEO of Mobile-Shop Company, it is extremely important to me that we have been on the cutting edge of maintenance productivity and efficiency for over 14 years. We were the first to present a full-service maintenance cart that truly addressed a sore spot- unprepared workers wasting time looking for and retrieving tools and parts. Our maintenance tool carts have provided maintenance departments across the nation a remarkable and sound means to increase productivity, efficiency and professionalism. I am proud to say our products are constructed from quality US steel in our Columbus, Ohio factory. Through partnering with seasoned professionals and collaborating with progressive newcomers to the industry, we continually expand our product line in order to meet the needs of our ever-growing customer base.

I am deeply appreciative of the thousands of customers that have come to expect quality, innovation, and real solutions to their maintenance concerns from our team. Mobile-Shop offers the option of purchasing your cart complete (fully loaded with tools ) or empty. We listen to our customers, pride ourselves in unbeatable customer service, quality products, and a warranty that sets us apart from our competition. The Mobile-Shop System has often been replicated but never duplicated.

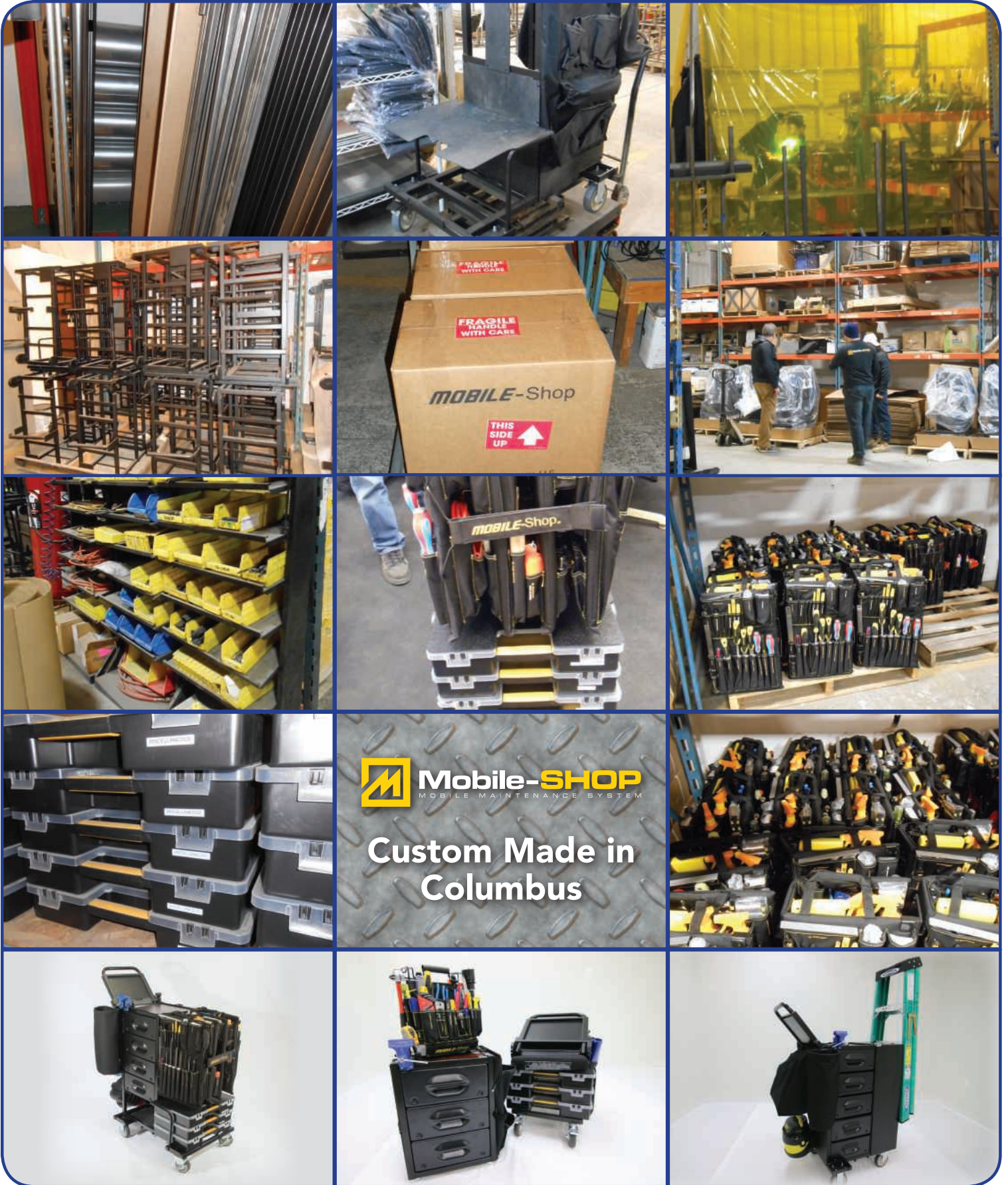
As this industry is forever changing with different challenges, my vision is to have Mobile-Shop continue to set the industry standard in mobile maintenance systems. Our quality, integrity, and innovation has come to be expected by our customers. I invite you to see why.

I hope that you become a Mobile-Shop customer soon.

Thanks,



**Angelo Mazzella**  
CEO, Mobile-Shop Company



**Mobile-SHOP**  
MOBILE MAINTENANCE SYSTEM

Custom Made in  
Columbus

**Mobile-SHOP**  
MOBILE MAINTENANCE SYSTEM

# COMPLETE HT ENGINEERING CART

The first system in the world designed specifically for professional maintenance engineers and technicians.



Mfr. Model #MS-CEC  
Grainger No. 4HFZ2

Mfr. Model #MS-CEC-ND  
Grainger No. 4HFZ8

- In use by Fortune 500 companies in multiple industries, the Mobile-Shop System delivers proven benefits to your maintenance operations
- Customizable to almost **any** application
- Creates a powerful new standard that brings maintenance operations to new levels of efficiency and professionalism. 5S and Lean Sigma compliant
- Compact and maneuverable. Breaks down into 4 manageable pieces in 30 seconds.  
Dimensions 20" W x 26" D x 39" H

\*Based on general maintenance wage data from Salary.com and results of The Ohio State University Department of Integrated Systems Engineering Study of the Mobile-Shop System in use Feb-July 2009.

## Productivity

- Increase productivity by 36%\*
  - Save an average of \$17,490\*
  - Recapture 148 labor hours\*
  - Return on your investment in an average of 2.5 months\*
- } per employee, per year

## Customer Satisfaction

- Proven to increase guest and tenant satisfaction scores

## Control

- Simple accountability for every tool and part means no more lost tools.



**COMPLETE AND ACCOUNTABLE**

Over 230 professional quality tools & 160 critical parts, all inventoried in 60 seconds.

**Get up to 40% more work done in the same amount of time.**



Each pocket is numbered and labeled

Over 160 critical parts

**CUSTOMER SATISFACTION**

Award-winning tool & parts organizational system for all aspects of maintenance



Bring your maintenance operations to unprecedented levels of efficiency and professionalism.

**TRANSPORTABLE**

Mobile-Shop goes anywhere you need it to go.



On smooth surfaces



Up steps



Over rough terrain



Folds down to 4 pieces and into a vehicle in 30 seconds.

**SAFE AND SECURE.**

Mobile-Shop locks up and has an alarm.





# COMPLETE PM CART

The first system in the world designed to improve efficiency & increase productivity for maintenance technicians & engineers.

**YOUR 5S SOLUTION FOR MAINTENANCE**



Mfr. Model #MS-CPMC

Grainger No. 4HFZ3

Mfr. Model #MS-CPMC-ND

Grainger No. 4HFZ9

## Productivity

- Increase productivity by 36%\*
  - Save an average of \$17,490\*
  - Recapture 148 labor hours\*
  - Return your investment in an average of 2.5 months\*
- } per employee, per year

## Control

- Lockable 4 drawer cabinet system
- Removable soft cover
- Motion sensing alarm

## Complete System

- Includes over 230 professional quality tools & 160 critical parts

- Developed by industry professionals in hospitality, manufacturing, education and government facilities
- Customizable to almost any application
- Creates a powerful new standard that brings maintenance operations to new levels of efficiency and professionalism. 5S and Lean Sigma compliant
- Compact and maneuverable. Dimensions: 22" W x 39" D x 39" H. Top of vise 42" H.

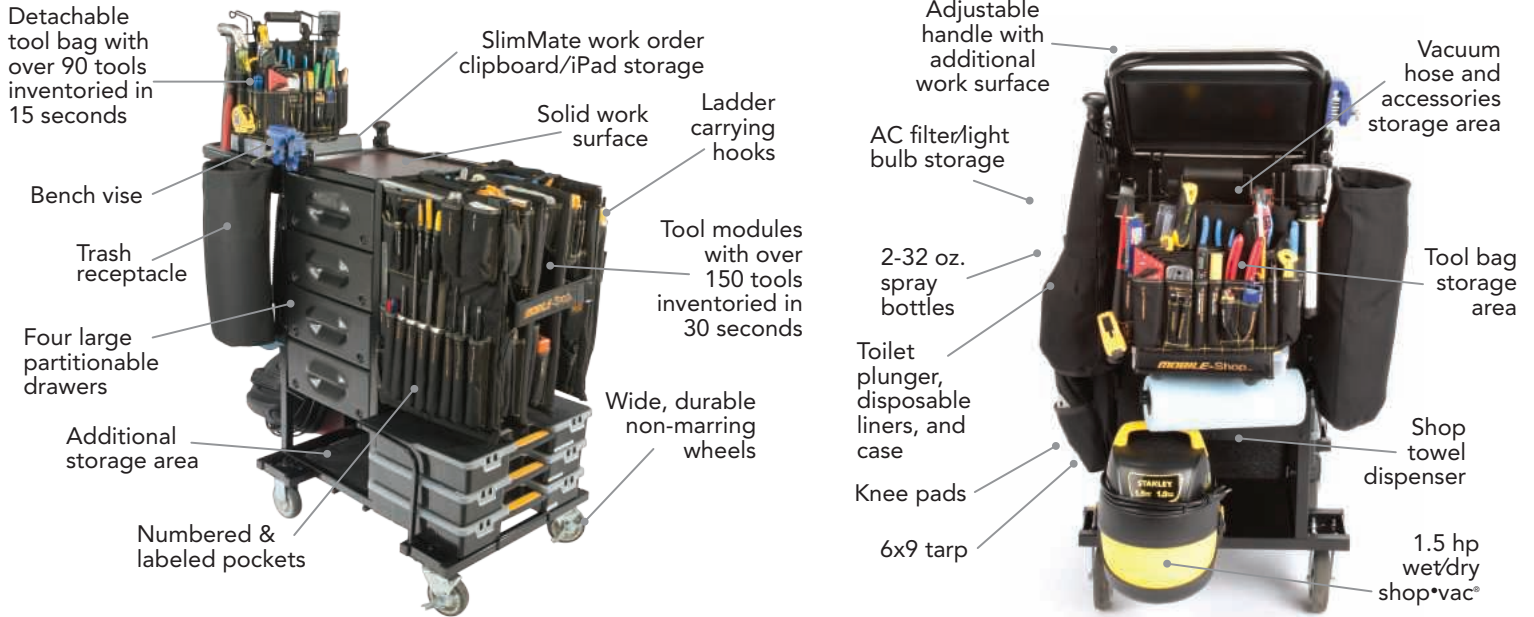
\*Based on general maintenance wage data from Salary.com and results of The Ohio State University Department of Integrated Systems Engineering Study of the Mobile-Shop System in use Feb-July 2009.





# COMPLETE PM (PREVENTATIVE MAINTENANCE) CART

**Packed with features that will boost the productivity and professionalism of your maintenance operations.**



# SD EXPRESS CART

This highly versatile hybrid cart was developed by industry professionals capturing the best features of our award winning PM & HT Engineering Carts.

## Productivity

- Increase productivity by 36%\*
  - Save an average of \$17,490\*
  - Recapture 148 labor hours\*
  - Return your investment in an average of 2.5 months\*
- } per employee, per year

## Customer Satisfaction

- Proven to increase guest and tenant satisfaction scores
- Same mobility as HT Engineering cart with large storage capacity & work surface of PM Cart

## Control

- Simple accountability for every tool and part means no more lost tools.
- Locking system, cover and motion sensing alarm to secure your items

## Complete System

- Includes award winning Tool Bag & 5 year warranty



**VERSATILE**

Mfr. model #MS-SD-CEC-VSE

Grainger No. 53PC89

Mfr. Model #MS-SD-EMPTY-VSE

Grainger No. 53PC91

Mfr. Model #MS-CTB

Grainger No. 4HFZ4

- Developed by industry professionals in conjunction with one of the largest and most respected hotel chains in the US
- Customizable to almost **any** application
- Add on an optional Light Bulb Accessory Kit, PM Accessory Kit or Cart Storage Locker
- Compact and maneuverable. Dimensions: 22" W x 26" D x 39" H. Top of Vise 42" H.

\*Based on general maintenance wage data from Salary.com and results of The Ohio State University Department of Integrated Systems Engineering Study of the Mobile-Shop System in use Feb-July 2009.

# SD EXPRESS CART

**FLEXIBLE – LIGHTWEIGHT – EASY TO USE**

**Packed with features that will boost the productivity and professionalism of your maintenance operations.**



# H3O CART

High-Rise • Healthcare • Hospitality • Office



Mfr. Model #MS-H3O-Cart  
Grainger No. 53PC93  
Mfr. Model #MS-H3O-ND  
Grainger No. 53PC94

**IDEAL FOR  
HEALTHCARE  
FACILITIES**

## PRODUCTIVITY

- Increase productivity by 36%\*
  - Save an average of \$17,490\*
  - Recapture 148 labor hours\*
  - Return your investment in an average of 2.5 months\*\*
- } per employee, per year

## CUSTOMER SATISFACTION

- Includes award winning Tool Bag and the most commonly needed tools

## CONTROL

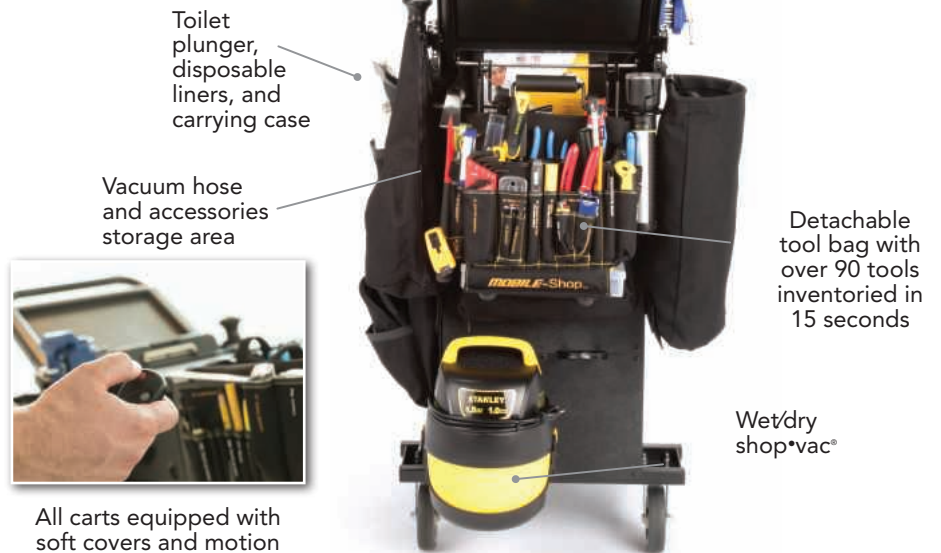
- 5 lockable storage drawers
- Lockable cover & motion sensing alarm
- Lockable front cabinet for tool module

- Developed by industry professionals in conjunction with several healthcare systems and one of the largest and most respected hotel chains in the US
- Customizable to almost **any** application
- Compact and maneuverable
- Dimensions: 39 ½" H x 36" D x 16" W. Top of vise 43" H.

\*Based on general maintenance wage data from Salary.com and results of The Ohio State University Department of Integrated Systems Engineering Study of the Mobile-Shop System in use Feb-July 2009.

# COMPLETE H30 CART

This fully lockable cart will boost the productivity & efficiency of your maintenance operations.



All carts equipped with soft covers and motion sensing alarms.

# CAPACITY CART

**Durable, heavy duty, extremely versatile**  
**Created for professional maintenance technicians & engineers**

**IDEAL FOR  
MANUFACTURING  
FACILITIES**



**Manf. Model #MS-Capacity**  
**Grainger No. 53PC94**

- Customizable to almost **any** application
- Comes with most commonly needed tools
- Ideal for manufacturing facilities
- Dimensions: 21" W x 40" D x 40 ½" H. Top of Vise 44" H.

## PRODUCTIVITY

- Increase productivity by 36%\*
  - Save an average of \$17,490\*
  - Recapture 148 labor hours\*
  - Return your investment in an average of 2.5 months\*
- } per employee, per year

## CUSTOMER SATISFACTION

- Includes award winning Tool Bag & 5 year warranty
- Large open area to carry lockout- tagout kits & arc flash suits.



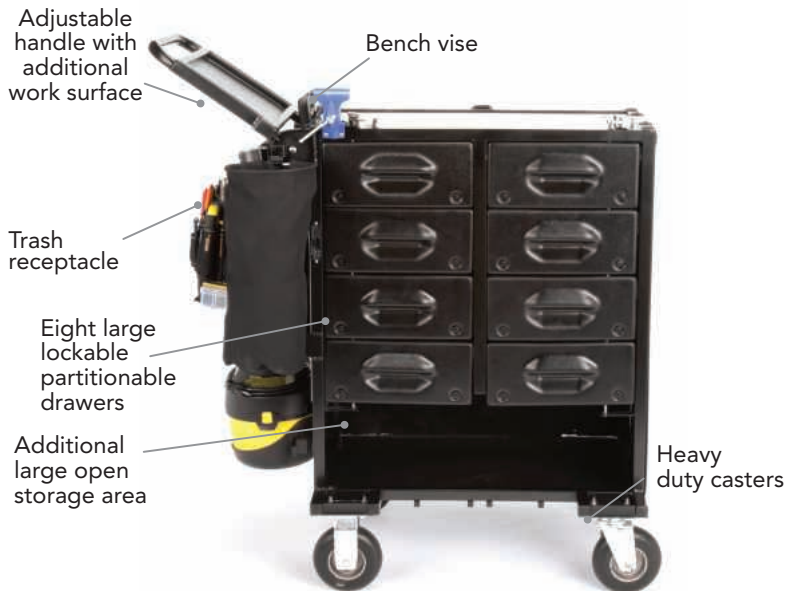
## CONTROL

- Simple accountability for every tool and part means no more lost tools.
- Motion sensing alarm
- Lockable 8 drawer storage

\*Based on general maintenance wage data from Salary.com and results of The Ohio State University Department of Integrated Systems Engineering Study of the Mobile-Shop System in use Feb-July 2009.

# CAPACITY CART

**Packed with features that will boost productivity  
& professionalism in any manufacturing facility**



# PARTS RE-SUPPLY CENTER

The restocking solution for your Mobile-Shop Carts.



- Comes out of its boxes and into use in 10 minutes
- Space for 160+ parts organized in numerical order by Mobile-Shop part number (matches pockets, labels in carts)
- Incredibly efficient re-supply of every part carried in the Mobile-Shop
- Parts to fill bins not included
- Welded steel construction
- 5 year limited warranty
- Approx. Dimensions: 42" W x 14" D x 60" H
- Parts not included

Mfr. Model #MS-PRC  
Grainger No. 4HFZ5



# GOLF CAR UTILITY BED

**Turn your golf car into a productivity machine. Super-efficient, professional transportation and protection for your Mobile-Shop.**



**Mfr. Model #MS-GCUB**  
**Grainger No. 4HFZ6**

- Fits Mobile-Shop HT Engineering Cart or SD Express Cart
- Perfect for garden style or resort properties, country clubs, and golf course properties
- Fits on all standard golf carts
- Can be used to transport and protect many types of equipment
- Weather tight
- Locks quickly & securely
- Large misc. bin with retractable rain cover
- Durable aluminum and stainless steel construction
- Includes universal mounting frame
- 5 year limited warranty
- Trailer hitch kit optional
- Approx. Dimensions: 45" W x 40" D x 28" H
- Cart not included



**Mfr. Model #MS-GCUB**  
**Grainger No. 4HFZ6**

# SECURITY LOCKERS

**Secure, worry-free storage for your Mobile-Shop.  
Perfect for properties with multiple Mobile-Shops in use.**

- Quickly fastens to the floor or wall
- Strong double bolt door lock
- ID label holder on outside of door
- Durable ¾" panel construction
- Mobile-Shop Carts not included
- Not for use in damp or wet areas
- Locks with padlock (included)

**Engineering Cart Locker**



27.68" L x 28" W x 48.45" H

Mfr. Model #MS-ECL

**Grainger No. 4HFZ7**

Also fits the SD Express Cart

**PM Cart Locker**



41.81" L x 34" W x 54.44" H

Mfr. Model #MS-PMCL

**Grainger No. 39CE51**

Also fits the H30 Cart and the Capacity Cart

# ACCESSORIES

**LIGHT BULB CARRIER:  
MOUNTS TO ANY EXISTING  
MOBILE-SHOP CART FRAME**



\*MS-HT/SD-BAK

Ideal for transporting T4 & T8 fluorescent light bulbs. Best fit with HT Engineering or SD Express Cart.

**3-DRAWER CLIP-ON ACCESSORY UNIT:  
CLIPS ONTO ANY EXISTING  
MOBILE-SHOP FRAME**



\*MS-SD-CLPDR (no vise)

\*MS-SD-CLPDR-VSE (with vise)

- 3 lockable, partitionable drawers
- Velcro carrying handle/shoulder strap
- Clips onto your HT and PM Carts
- Optional vise



## PM ACCESSORY KIT

Adds two valuable features to your Mobile-Shop Cart: a toilet plunger storage compartment with disposable liners, and a trash receptacle that accepts standard trash bags.

Mfr. Model #MS-PMAK  
Grainger No. 4HGA1

\*Items available through Grainger Sourcing only.

# COMPLETE TOOL BAG

**The ultimate grab and go tool bag. Over 90 of the most commonly needed tools & parts, inventoried in 15 seconds.**

- Included with most carts or sold separately
- High quality tools carried in their own numbered and labeled pocket
- Special hooks allow the bag to hang from ladders, railings, cabinets, shelving and the carts. See cart pictures for details.
- Includes an empty parts box carried in the bottom
- Clear window ID holder
- Two large misc. areas for carrying your extra equipment
- Integrates with the Mobile-Shop carts and Resupply Center
- Comfortable and durable shoulder strap
- Approx. Dimensions:  
13" W x 11" D x 15" H



Mfr. Model #MS-CTB  
Grainger No. 4HFZ4



# DETAILED TOOL LIST – TOOL BAG

Pocket	
Tool #	Tool Description
2	Scissors
3	6" Phillips driver bit
4	Magnetic pick-up
5	Inspection mirror
6	Pick tool
7	1/2" Wood chisel
8	Mini pry bar
9	Magnetized LED Carry light
10	16' tape measure
11	SAE hex wrench set
11a	0.050"
11b	1/16"
11c	5/64"
11d	3/32"
11e	7/64"
11f	1/8"
11g	9/64"
11h	5/32"
11i	3/16"
11j	7/32"
11k	1/4"
11l	5/16"
11m	3/8"
12	Razor blade scraper
13	Tweezers
14	3/32" Nail set punch
15	Electronic temperature probe
16	Voltage sensor
17	Tekton wire stripper
18	Diamond sharpening stone
19	Quick blade utility knife

Pocket	
Tool #	Tool Description
20	Multi-bit mini-screwdriver
20a	5/64" slotted
20b	1/8" Slotted
20c	1/16" Slotted
20d	3/32" Slotted
20e	#000 Phillips
20f	#00 Phillips
20g	#0 Phillips
20h	#1 Phillips
21	Channellock needle nose pliers
22	9" Needle nose locking pliers
23	6" Adjustable wrench
24	Saw handle
25	6" round file
26	4 in 1 file
27	Channellock 8" groove joint pliers
28	Channellock lineman's pliers
29	1/4" x 4 Flat head screwdriver
30	Klein 11 in 1 multi bit-screwdriver
30a	PH-1 phillips
30b	PH-2 phillips
30c	3/16" slotted
30d	1/4" slotted
30e	T-10 torx
30f	T-15 torx
30g	3/8" Nut driver
30h	5/16" Nut drive
30i	1/4" Nut driver
30j	#1 Square recess tip
30k	#2 Square recess tip
31	Torpedo level

Pocket	
Tool #	Tool Description
32	Hyde 6 in painters tool
33	SAE socket set with rack
33a	SAE 1/4" socket
33b	SAE 5/16" socket
33c	SAE 3/8" socket
33d	SAE 7/16" socket
33e	SAE 1/2" socket
33f	SAE 9/16" socket
33g	SAE 5/8" socket
33h	SAE 11/16" socket
33i	SAE 3/4" socket
33j	SAE 13/16" socket
33K	Socket rack
34	3/8" ratchet
35	Small wire brush
36	Tooth brush
37	Calculator
38	Small tubing cutter
39	Stubby screwdriver
39a	#2 phillips
39b	1/4" slotted
40	Nut driver bit set with holder
40a	1/4" Magnetic nut driver
40b	5/16" Magnetic nut driver
40c	3/8" Magnetic nut driver
40d	7/16" Magnetic nut driver
40e	3/8" Socket bit
40f	Nut driver bit holder
41	3" Socket extension
42	Stanley tripod LED flashlight
43	Tekton hammer
44	Tool bag parts box

Pocket	
Part #	Part Description
P85	Electrical tape
P77	Pencil
P78	Marker
P79	Saw blade
P79	Saw blade box
P80	Lubricant #1
P81	Lubricant #2
P82	Handiwipes
P83	Antibiotic ointment
P84	Bandages
P86	Pen
P87	Note pad



Mfr. Model #MS-CTB  
Grainger No. 4HFZ4

# DETAILED TOOL LIST – LEFT MODULE

Pocket	Tool #	Tool Description
	45	Aluminum speed square
	46	Compass
	47	Safety glasses
	48	Screen Tool
	49	Ruler with conversion table
	50	Angle screwdriver
	Bits 50a - 50p found in driver bits box # 101	
	51	Awl
	52	Triangle file with handle
	53	10" Round file with handle
	54	Metal file-flat/round with handle
	55	Wood file-flat/round with handle
	56	3/16" x 8" Flat head screwdriver
	57	3/8" x 6" Phillips screwdriver
	58	#3 x 6" Phillips screwdriver
	59	2x Spray bottle
	60	Staple gun
	61	Extension cord
	62	Funnel
	63	Caulk gun
	64	Self lighting swivel head torch
	65	Combination wrench set with roll-up
	65a	1/4" Combo wrench
	65b	5/16" Combo wrench
	65c	3/8" Combo wrench
	65d	7/16" Combo wrench
	65e	1/2" Combo wrench
	65f	9/16" Combo wrench

Pocket	Tool #	Tool Description
	65g	5/8" Combo wrench
	65h	11/16" Combo wrench
	66	Channellock wire cutters
	67	Large Tubing Cutters
	68	6" Socket extension
	69	Metric socket set with rack
	69a	8 mm Socket
	69b	9 mm Socket
	69c	10 mm Socket
	69d	11 mm Socket
	69e	12 mm Socket
	69f	13 mm Socket
	69g	14 mm Socket
	69h	15 mm Socket
	69i	17 mm Socket
	69j	19 mm Socket
	69k	Metric socket rack

Pocket	Tool #	Tool Description
	70	Deep-well socket set w/rack
	70a	5/16" DW socket
	70b	3/8" DW socket
	70c	7/16" DW socket
	70d	1/2" DW socket
	70e	9/16" DW socket
	70f	5/8" DW socket
	70g	1 1/16" DW socket
	70h	3/4" DW socket
	70i	13/16" DW socket
	70j	DW Socket rack
	71	10" Adjustable wrench
	72	12" aluminum pipe wrench
	73	Channellock 12" groove joint pliers
	75	10" Locking pliers
	76	1" Wood chisel
	77	1 1/2" Hyde putty knife
	78	8" Hyde mud knife
	79	3" Hyde putty knife
	80	3/4" Concrete chisel
	71	3" Adhesive spreader
	82	Large wire brush
	83	1 1/2" Cut paint brush
	84	Cleaning brush
	85	All purpose cutter
	86	Cable cutter/pruner

## Detailed Part List-Left Module

Pocket	Part #	Part Description
	P88	Touch up marker
	P89	Touch up stick
	P77	Pencil
	P90	Tool marker
	P91	Staples
	P92	Art brush 1/8"



# DETAILED TOOL LIST – RIGHT MODULE

## Pocket

Tool #	Tool Description
87	Outlet tester
88	Metric Hex Wrenches
88a	1.5 mm
88b	2 mm
88c	2.5 mm
88d	3 mm
88e	4 mm
88f	5 mm
88g	6 mm
88h	8 mm
88i	10 mm
89	3 to 1 multi plug
90	Work gloves
91	Siphon pump
92	Voltage tester
93	Continuity tester
94	HW tank element tool
95	Irwin quick clamp
96	Electronic multi meter
98	Center punch
99	1/8" Pin punch
100	Dewalt metal drill bit set
P66a	1/16"
P66b	5/64"
P66c	3/32"
P66d	7/64"
P66e	1/8"
P66f	9/64"
P66g	5/32"
P66h	1 1/64"
P66i	3/16"
100a	13/64" (2)
100b	7/32"
100c	15/64"
100d	1/4"
100e	5/16"
100f	3/8"
100g	1/2"
101	Driver bits box with bits
101box	Driver bits box
50a	PH1
50b	PV1
50c	PH2
50d	PV2
50e	V 3/16"
50f	V 1/4"
50g	T-10
50h	T-15
50i	T-20
50j	T-25

## Pocket

Tool #	Tool Description
50k	1/4 Socket
50l	5/16 Socket
50m	11/32 Socket
50n	3/8 Socket
50o	7/16 Socket
50p	1/2 Socket
101a	#2 Phillips/P2SL8
101b	2" Phillips #1
101c	2" Phillips # 2
101d	2" Phillips #3
101e	2" Robertson S-1
101f	2" Robertson S-2
101g	2" Robertson S-3
124	Assorted security bits*
124a	Magnetic insertion bit holder*
124b	Torq # 6*
124c	Torq # 8*
124d	Torq # 10*
124e	Spanner # 4*
124f	Spanner # 6*
124g	Spanner # 8*
124h	Spanner # 10*
124i	Tri-wing #1*
124j	Tri-wing #2*
124k	Tri-wing # 3*
124l	Tri-wing # 4*
124m	Hex 2 mm*
124n	Hex 2.5 mm*
124o	Hex 3 mm*
124p	Hex 4 mm*
124q	Hex 5 mm*
124r	Hex 6 mm*
124s	Hex 5/32*
124t	Hex 9/64*
124u	Hex 1/8*
124v	Hex 7/64*
124w	Hex 3/32*
124x	Hex 5/64*
124y	Torx T-8H*
124z	Torx T - 10H*
124aa	Torx T - 15H*
124bb	Torx T - 12H*
124cc	Torx T - 25H*
124dd	Torx T-27H*

## Pocket

Tool #	Tool Description
124ee*	Torx T - 30H
124ff*	Torx T- 35H
124gg*	Torx T- 40H
102	Metabo 18V hammer drill
103	1/4 x 12 Metal drill bit
104	1/2 x 12 Masonry drill bit
105	1/2 x 16 Wood drill bit
106	1" Hole saw
107	2 1/8" Hole saw with arbor
108	Wood drill bit set
108 roll up	wood drill bit roll up
108a	3/8"
108b	7/16"
108c	1/2"
108d	9/16"
108e	5/8"
108f	11/16"
108g	3/4"
108h	13/16"
108i	7/8"
108j	1"
108k	1 1/8"
108l	1 1/4"
109	Large level
110	Large pry bar
111	Chalk line
112	Stud finder
113	Masonry drill bit set
113a	1/8" (3)
113b	5/32" (2)
113c	3/16" (3)
113d	1/4" (3)
113e	5/16"
113f	3/8"
113g	1/2"
114	LED Headbank flashlight
116	15" wood saw
117	12" hacksaw
123	118 Paint mixer
124	119 Flex saw
125	120 6" Coping saw
126	121 Dust pan



**Mobile-SHOP**  
MOBILE MAINTENANCE SYSTEM

\* Bits 124-124gg found in driver bits box #101

# DETAILED PARTS LIST

## Detailed List-Fasteners Box

Part #	Part Description
P18	3/16" x 1 Bolt
P19	3/16" x 2" Bolt
P22	3/16" Nut
P27	1/4" x 1 Fender washer
P28	3/16" x 1 1/4" Fender washer
P8	32 x 1 1/4" Knob screw
P9	32 x 2" Knob screw
P10	#10 x 3/4" Pan head SM screw
P13	#8 x 3/4", Truss hd screw
P16	1/4" x 1" Bolt
P174	1/4" x 2" Bolt
P20	1/4" Nut
P14	#8 x 1/2" Self-drilling truss head screw
P15	#8 x 3/4" Self drilling truss head screw
P108	#8 x 5/8" Self drill truss hd screw
P109	#8 x 1- 5/8" Self drill, truss hd screw
P100	1" Exterior screw

Part #	Part Description
P102	1 5/8" Exterior screw
P104	2 1/2" Exterior screw
P106	3 1/2" Exterior screw
P6	1/4" x 2 1/4" Concrete screw
P7	1/4" - 2 3/4" Concrete
P4	1/4" - 1 1/4" Concrete
P5	1/4" x 1 3/4" Concrete screw
P11	1/2" Eye screw
P12	#8 Truss head
P1	1 1/2" Corner brace
P2	2 1/2" Flat corner brace
P3	3" Flat mndg plate
P101	1 1/4" Exterior screw
P103	2" Exterior screw
P105	3" Exterior screw
P107	4" Exterior screw
P110	#8 Screw-in drywall anchors w/ screw

## Detailed List-Miscellaneous Box

Part #	Part Description
P149	Dust mask
P148	Shoe covers
P142	Hangar strap
P145	Galvanized bailing wire
P150	Sanding sponge - coarse
P151	Sanding sponge -fine
P146	Masons string
P152	Polyurethane wood glue
P153	Cutting oil
P158	Epoxy putty
P159	Cable ties
P62	Super glue
P157	Wallpaper seam glue
P164	Trash bags
P63	Thread locker
P147	Rubber gloves
P160	Plastic shim
P155	Popsicle stick
P156	Glue mixing cup
P162	Spackling, small tube
P154	Epoxy glue
P161	Mesh drywall tape
P163	Goof off

## Detailed List-Plumbing and Electrical Box

Part #	Part Description
P60	Flux brush
P129	Solder
P130	Flux
P97	Blue Painters Tape
P136	Pipe joint compound
P58	Dual thread aerator
P59	Hose washer
P57	1 1/2" tail piece
P139	Plumbers grease
P174	Plumbers putty
P133	Water stop for soldering
P137	Steel wool

Part #	Part Description
P138	Plumbers sand cloth
P135	All purpose plastic pipe cement
P119	Cable staple
P37	Ex small wire nut - grey
P121	Medium wire nuts, yellow
P71	AA batteries
P74	9 Volt batteries
P75	AAA batteries
P143	1 1/4" Slip joint nut
P144	1 1/2" Slip joint nut
P54	1 1/4" Slip joint washer
P55	1 1/2" - 1 1/4" Slip joint washer

Part #	Part Description
P140	Toilet tissue roller
P134	Teflon tape
P123	3/4" Wire connector
P124	3/4" Wire connector
P120	Pull switch
P118	1/2" Wire staples
P38	Small wire nut - orange
P122	Large wire nut- red
P125	Elec. Connection grease
P126	12 ga. Wire - red ( feet)
P114	10d Finish nail

## Detailed List-Small Parts Box

Part #	Part Description
P92	Art brush 3/8" Detailed Parts List
P21	1/4" Locknut
P23	3/16" Locknut
P24	# 10 Flat washer
P25	1/4" Flat washer
P26	5/16" Flat washer
P29	4d Finish nail
P31	Carpet strip nails
P32	5/16" Flat washer

Part #	Part Description
P33	Push pins
P34	1/16" x 1 Cotter pin
P35	3/32" x 1 1/4" Cotter pin
P39a	Wallplate screws, white
P39b	Wallplate screws, ivory
P40	Plug/switch mounting screw
P41	Light globe screw
P42	Light glass nut
P45	Light pull chain( 3ft. Lengths)

Part #	Part Description
P46	Pull chain connector
P47	1/4" Female disconnect
P48	Spade terminal
P49	1/4" female- dbl male disconnect
P50	RG6 screw on terminal
P51	Double male coax connector
P43	1 1/2" Light nipple
P44	Light nipple lock nut





# MOBILE-SHOP H30 CART TOOL LIST

Tool #	Tool Name	Brand Name	Location
1	Scissors	Mobile-Shop	Tool Bag
2	6" Phillips Driver Bit	Mobile-Shop	Tool Bag
3	Magnetic Pick-Up	Mobile-Shop	Tool Bag
4	Inspection Mirror	Mobile-Shop	Tool Bag
5	Pick Tool	Mobile-Shop	Tool Bag
6	½" Wood Chisel	Mobile-Shop	Tool Bag
7	Mini Pry Bar	Stanley	Tool Bag
8	Mini LED Flashlight (Larry Light)	NEBO Tools	Tool Bag
9	16" Tape Measure	Mobile-Shop	Tool Bag
10	SAE Hex Wrench Set	Eklind	Tool Bag
11	Razor Blade Scraper	Mobile-Shop	Tool Bag
12	Tweezers	Mobile-Shop	Tool Bag
13	⅜" Nail Set Punch	Mobile-Shop	Tool Bag
14	Electronic Temperature Probe	Mobile-Shop	Tool Bag
15	Voltage Sensor	Mobile-Shop	Tool Bag
16	Wire Stripper	Tekton	Tool Bag
17	Diamond Sharpening Stone	Mobile-Shop	Tool Bag
18	Quick Change Utility Knife	Quickblade	Tool Bag
19	Multi-bit Mini Screwdriver	Great Neck	Tool Bag
20	Needle Nose Pliers	Channellock	Tool Bag
21	9" Needle Nose Locking Pliers	Pittsburgh	Tool Bag
22	6" Adjustable Wrench	Mobile-Shop	Tool Bag
23	Saw Handle	General Tools	Tool Bag
24	6" Round File	Stanley	Tool Bag
25	8" 4-in-1 File	Stanley	Tool Bag
26	8" Groove Joint Pliers	Channellock	Tool Bag

Tool #	Tool Name	Brand Name	Location
27	Lineman's Pliers	Channellock	Tool Bag
28	¼" x 4 Flat Head Screwdriver	Channellock	Tool Bag
29	11 in 1 Multi-bit Screwdriver	Klein Tools	Tool Bag
30	Torpedo Level	Johnson	Tool Bag
31	6 in 1 Painter's Tool	Hyde	Tool Bag
32	SAE Socket Set with Rack	Mobile-Shop	Tool Bag
33	⅜" Ratchet	Stanley	Tool Bag
34	Small Wire Brush	Mobile-Shop	Tool Bag
35	Tooth Brush	Mobile-Shop	Tool Bag
36	Calculator	Sharp	Tool Bag
37	Small Tubing Cutter	Mobile-Shop	Tool Bag
38	Stubby Screwdriver	Great Neck	Tool Bag
39	Nut Driver Bit Set with Holder	Mobile-Shop	Tool Bag
40	3" Socket Extension	Tekton	Tool Bag
41	Tripod Flashlight	Stanley	Tool Bag
42	Straight Claw Hammer	Tekton	Tool Bag
43	Tool Bag Parts Box	Mobile-Shop	Tool Bag
44	Awl	Great Neck	Tool Mod
45	Triangle File with Handle	Stanley	Tool Mod
46	10" Round File with Handle	Stanley	Tool Mod
47	Metal File- Flat/Round with Handle	Stanley	Tool Mod
48	Wood file- Flat/Round with Handle	Stanley	Tool Mod
49	⅜" x 8" Flat-Head Screwdriver	Channellock	Tool Mod
50	⅜" x 6" Flat-Head Screwdriver	Channellock	Tool Mod

Tool #	Tool Name	Brand Name	Location
51	#3 x 6" Phillips Screwdriver	Channellock	Tool Mod
52	25' Extension Cord	Cooper	Tool Mod
53	Caulk Gun	Irwin	Tool Mod
54	Combination Wrench Set w/Roll-Up	Mobile-Shop	Tool Mod
55	Wire Cutters	Channellock	Tool Mod
56	Metric Hex Wrenches	Eklind	Tool Mod
57	6" Socket Extension	Fuller	Tool Mod
58	Metric Socket Set with Rack	Fuller	Tool Mod
59	Deep-Well Socket Set with Rack	Fuller	Tool Mod
60	10" Adjustable Wrench	Mobile-Shop	Tool Mod
61	12" Aluminum Pipe Wrench	Mobile-Shop	Tool Mod
62	12" Groove Joint Pliers	Channellock	Tool Mod
63	10" Locking Pliers	Mobile-Shop	Tool Mod
64	1 ½" Putty Knife	Hyde	Tool Mod
65	3" Putty Knife	Hyde	Tool Mod
66	All Purpose Cutters	Mobile-Shop	Tool Mod
67	3-to-1 Multi-Plug	Cooper Wiring	Tool Mod
68	Electronic Multi-Meter	Klein Tools	Tool Mod
69	Driver Bits Box with Bits	GreatNeck	Tool Mod
70	18v Hammer Drill	Metabo	Tool Mod
71	Wood Drill Bit Set	Mobile-Shop	Tool Mod
72	12" Hacksaw	Stanley	Tool Mod
73	Knee Pads	Mobile-Shop	Tool Mod
74	Tarp	Mobile-Shop	Tool Mod
75	Infrared Thermometer	Cen-Tech	Tool Mod



"When I heard our company was buying us Mobile-Shop, I told all my family and friends to go to their web site and see what we are getting. I always tell people that we're so lucky to have a company like Waterton who gives us the right tools to work with."

– **Justin North, Service Technician**  
**Waterton Residential**  
**Atlanta, GA**

"In the process of researching products for our main facility activation, I came across a great solution for our Engineering Technicians. This one cart has everything a facility maintenance worker could need for any repair all on one cart. The product is already on GSA. The Engineering shops bought 5 of them and our logistics group bought 3. Everyone has been very happy with them. If you compare the cost of purchasing separate tool kits to equal what this cart offers, you'll spend 2-3 times as much and still not have the convenience of the cart."

– **Nathan Lahr**  
**Chalmers P. Wylie**  
**VA Clinic, Columbus, OH**

"I try to have prospective tenants 'bump into' a technician using the Mobile-Shop during a leasing situation, (so that they will) see that we're a step above our competition in our practice of maintenance and our professionalism."

– **Bill Greenough**  
**Regional Property**  
**Manager, Highland**  
**Management Group**

"Carrying the Mobile Shop tool bags, our maintenance technicians are more confident in their abilities. Their presentation is much more professional. And the credibility that's given to them by the customers is increased. They're also more properly prepared to be able to cross the threshold of an apartment, complete all the required tasks in that apartment, and leave in one trip as opposed to having to go back and forth. It will help you do what you do in a more efficient and professional manner."

– **Ed Groleau, Senior**  
**Director of Maintenance**  
**Operations**

"The Mobile-Shop is so much more organized than our previous tool carts and much more mobile. The selection of tools is sufficient for almost any task, cutting down the trips back to the shop for items they forgot or did not happen to have."

– **David Paul, CHS, CHDT**  
**Asst. Dir. of Engineering**  
**Hershey Lodge**

"Mobile-Shop has figured out what engineers really need in order to do their jobs more efficiently; and they've come up with the perfect solution – not only the types of tools but also how to be accountable for your tools. And this works."

– **Marty Quick**  
**Senior Maintenance Mgr.**  
**BECO Management, Inc.**

"The professional image that Mobile-Shop brings helps us to get referrals. It is very important that our customers see us on the job working, not out chasing down parts and tools that we should have had."

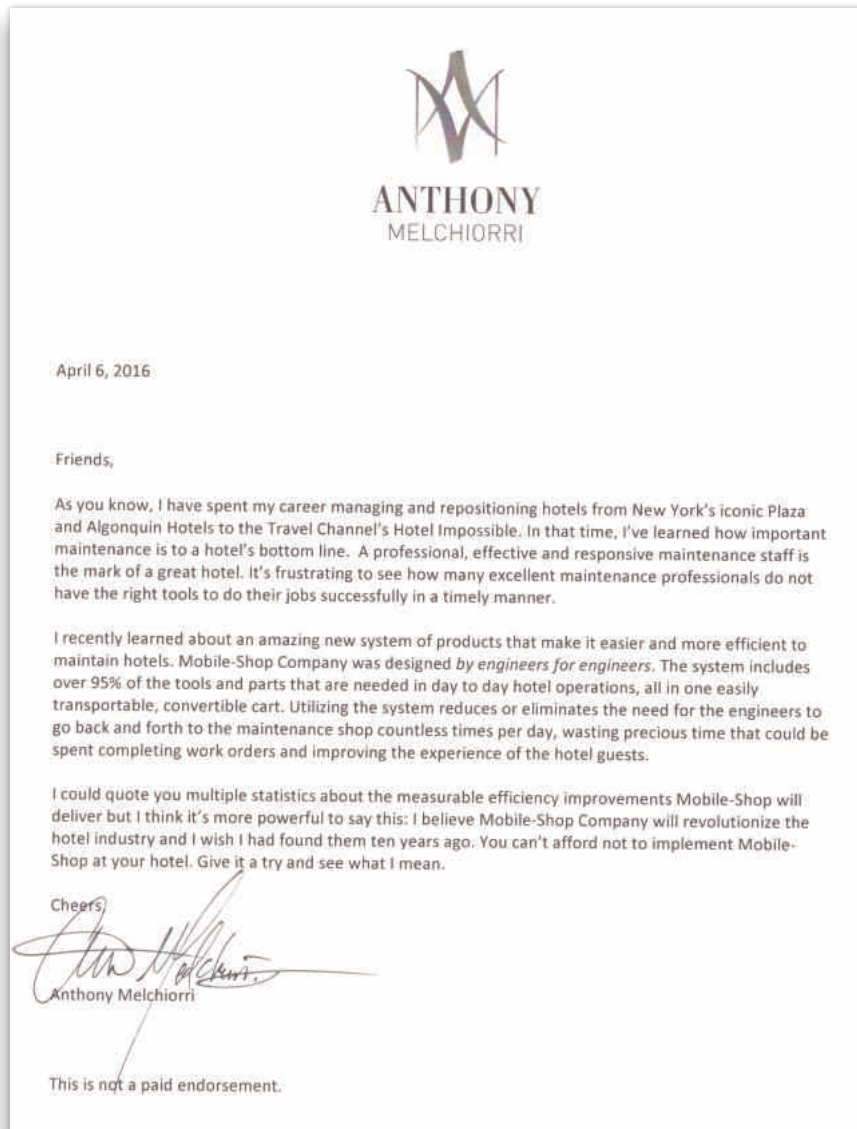
– **Ted Sparrow**  
**Field Service Manager**  
**Handyman Matters**  
**Chicago, IL**

"Before using Mobile-Shop, we had four pages of open work orders at the end of the day. We could never get caught up. Six months later we have zero open tickets and now get to our deferred maintenance."

– **John Johns**  
**Maintenance Supervisor**  
**Balmoral Village**  
**Apartments**  
**Peachtree City, GA**

"The level of professionalism and organization has definitely been noticed by my clients. I honestly don't know how I did business before the Mobile-Shop. Thank you."

– **Todd Perkins**  
**THP Contractors**



"If the work order calls for one thing to be done, and the tenant tells me there are two other things that need fixed, I can do it with the Mobile-Shop. It is important for me and my relationship with my tenants that I care about what they need."

– **Jeff Negron**  
**Maintenance Manager**  
**Lake View Apts.**  
**Tarragon Development**

"Mobile-Shop gives our engineers a higher level of professionalism; it's less interruptive to the tenants because the technicians don't have to keep going back and forth to the shop to get tools."

– **Madeline Abel**  
**VP of Property Management**  
**BECO Management, Inc.**  
**Rockville, MD**

"You have to incorporate the Mobile-Shop System in your operations in bad times as well as good times"

– **Marc Fischer, Senior Vice President**  
**Transwestern Commercial Services**



# OUR CUSTOMERS INCLUDE:

## HOSPITALITY:

AHL – Desmond Tutu Center  
 Bellagio Resort & Casino  
 Best Western Hotels  
 Courtyard by Marriott Hotels  
 Disney World Swan & Dolphin Resort  
 FLG Hospitality  
 Foxwoods Resort & Casino  
 Gaylord National Resort & Convention Center  
 Hershey Lodge – Hershey Resorts  
 Hilton Hotels  
 Holiday Inn  
 Marriott Hotels  
 Mission Inn Resort  
 Silverleaf Resorts, Inc.  
 Sound View Inn  
 Tidewater Hotels & Resorts  
 Westin Hotels  
 Bellasera Resort  
 Wyndham Hotels  
 Sheraton Hotels  
 Residence Inn  
 Aloft Hotel  
 Hotel Williamsburg  
 Black Bear Inn  
 Crowne Plaza  
 Good Hospitality  
 Fairfield Inn  
 Spring Hill Suites  
 Hampton Inn  
 Holiday Inn Express  
 Homewood Suites  
 Hyatt Regency  
 Pinnacle Hospitality  
 Benchmark Hospitality  
 JW Marriott  
 True North Hotel Group  
 TownPlace Suites  
 Starwood Hotels

## SENIOR/ASSISTED LIVING:

Spectrum  
 BrandyWine  
 Brookdale  
 Presbyterian Retirement Communities  
 Trinity  
 HarborChase  
 Atria  
 Fivestar Senior Living  
 Morningstar Senior Living  
 Messiah Lifeways

## MULTI-FAMILY:

1212 Fifth Avenue  
 Aimco  
 BH Management  
 Brentwood Enterprises  
 Bozzuto Management  
 CAPREIT  
 Central Management Company  
 Charles H. Greenthal Management  
 Corcoran Management  
 Drayton Tower Apartments  
 Duke University  
 Elan Uptown Luxury Apartments  
 Equity Residential  
 Erickson Living  
 Forest City Properties  
 Greystar  
 Highgrove Apartments  
 Fortis Property Group  
 KDF Communities  
 Lincoln Property Company  
 Madigan Development  
 Madison Apartment Management  
 Chicago Public Schools  
 Highland Properties  
 Irvine Companies  
 Campus Advantage  
 Philadelphia Housing Authority  
 Pinnacle  
 The Reserve at Marina Bay  
 Timbercreek Management  
 Rockworth Companies  
 Rose Associates  
 Roseland Properties  
 University of Utah  
 Waterton Residential  
 Worldgate Condominiums  
 Yale West Luxury Apartments

## HOSPITALS

John Hopkins University & Health System  
 Barnes Jewish St. Peters Hospital  
 OSU James Cancer Hospital  
 Thomas Jefferson Methodist Hospital  
 St. Anthony Hospital

## FACILITIES:

21st Signal Brigade  
 Abbott Laboratories  
 AIG  
 Amazon  
 AT&T Center  
 BECO Management, Inc.  
 Blue Cross of LA  
 Boeing  
 Cabela's  
 Cassidy Turley  
 CBRE  
 Chesapeake Energy  
 U.S. Department of Defense  
 Discover Bank, DE  
 Colliers International  
 Exxon Mobil Corp  
 FBI  
 Fidelity Investments  
 Fort Riley, Kansas  
 Frontgate  
 General Service Administration  
 Google  
 LBA Realty  
 Lockheed Martin  
 Microsoft  
 JP Morgan Chase Bank, N.A.  
 Neiman Marcus  
 Netflix  
 The Ohio State University  
 Oklahoma Energy  
 Protective Life  
 Rack Space  
 Raytheon Company  
 Smithsonian National Zoo  
 Target  
 Tiffany & Co.  
 Tinker Air Force Base  
 Transwestern  
 University of Colorado  
 U.S. Capitol Building  
 U.S. Federal Reserve  
 U.S. Veterans Administration  
 Wright Patterson Air Force Base  
 Lifetime Fitness

## HT Engineering Cart

Complete HT Cart  
Mfr. Model #MS-CEC  
Grainger No. 4HFZ2

HT Cart – No Drill  
Mfr. Model #MS-CEC-ND  
Grainger No. 4HFZ2

HT Cart – Pro Model  
Mfr. Model #MS-CEC-PRO  
Grainger No. 6ETU9

HT Cart – Base Model Mfr.  
Model #MS-CEC-B  
Grainger No. 6ETV1

HT Cart – Empty  
Mfr. Model #MS-CEC-EMTY  
Grainger No. 39CE50



## PM Preventative Maintenance Cart

Complete PM Cart  
Mfr. Model #MS-CPMC  
Grainger No. 4HFZ3

PM Cart – No Drill  
Mfr. Model #MS-CPMC-ND  
Grainger No. 4HFZ9

PM Cart – Pro Model  
Mfr. Model #MS-CPMC-PRO  
Grainger No. 6ETU8

PM Cart – Base Model  
Mfr. Model #MS-CPMC-B  
Grainger No. 6ETV0

PM Cart – Empty  
Mfr. Model #MS-CPMC-EMTY  
Grainger No. 39CE49



## H3O Cart

Complete H3O Cart  
Mfr. Model #MS-H3O  
Grainger No. 53PC93

H3O Cart – No Drill  
Mfr. Model #MS-H3O-ND  
Grainger No. 53PC94

H3O Cart Base Model  
Mfr. Model #MS-H3O-B  
Grainger No. 53PC95

H3O Cart Empty  
Mfr. Model #MS-H3O-EMTY  
Grainger No. 53PC96



## SD Express Cart

Complete SD Cart  
Mfr. Model #MS-SD-CEC  
Grainger No. 53PC90

SD Cart with Vise  
Mfr. Model #MS-SD-CEC-VSE  
Grainger No. 53PC89

SD Cart Base Model  
Mfr. Model #MS-SD-B

SD Cart Empty  
Mfr. Model #MS-SD-EMTY  
Grainger No. 53PC92

SD Cart Base Model w/Vise  
Mfr. Model #MS-SD-B-VSE

SD Cart Empty w/Vise  
Mfr. Model #MS-SD-EMTY-VSE  
Grainger No. 53PC91



## Capacity Cart

Capacity Cart Complete  
Mfr. Model #MS-CAPACITY  
Grainger No. 53PC97

Capacity Cart Base Model  
Mfr. Model #MS-CAPACITY-B  
Grainger No. 53PC98

Capacity Cart Empty  
#MS-CAPACITY-EMTY  
Grainger No. 53PC99



Complete Tool Bag  
Mfr. Model #MS-CTB  
Grainger No. 4HFZ4



\*Items available through Grainger Sourcing only.

**Golf Car Utility Bed**  
Mfr. Model #MS-GCUB  
Grainger No. 4HFZ6



**PM Cart  
Accessory Kit**  
Mfr. Model  
#MS-PMAK  
Grainger No.  
4HGA1



**HT Engineering Cart  
& PM Cart Lockers**



**Parts Center**  
Mfr. Model #MS-PRC  
Grainger No. 4HFZ5



**HT Engineering Cart Locker**  
Mfr. Model #MS-ECL Grainger No. 4HFZ7  
The HT Engineering Cart Locker also houses the SD Express Cart.



**PM Cart Locker**  
Mfr. Model #MS-PMCL Grainger No. 39CE51  
The PM Cart Locker also houses the H3O and Capacity Carts.





# NO MORE LOST TIME LOOKING FOR TOOLS OR PARTS.

To the uninformed, our systems appear to be a smartly engineered set of tools. close examination you'll discover that our professional maintenance systems save money and time, and create value.



HT  
Grainger No. 4HFZ2



CTB  
Grainger No. 4HFZ4



PM  
Grainger No. 6ETV0



H30  
Grainger No. 53PC96



Capacity  
Grainger No. 53PC97



SD  
Grainger No. 53PC89