

**INSTALLATION INSTRUCTIONS:**

A- PRIOR TO INSTALLING, REMOVE HEX NUT (1), WASHER (2) AND SPACER (3) FROM THE SENSOR ASSEMBLY SLEEVE.

B- FIX THE SENSOR ASSEMBLY TO THE BASIN BY PASSING WIRES THRU HOLE AND FASTEN USING THE HEX NUT (1), WASHER (2) AND SPACER (3).

C- REMOVE THE 1/4" OD X 1/4" NPT PUSH-IN FITTING (4), LOCKNUT (5) AND WASHER (6) FROM THE CONICAL FAUCET (7).

D- MOUNT THE FAUCET (7) TO THE BASIN. INSTALL WASHER (6) AND NUT (5) TO FAUCET (7) FROM THE DECK UNDERSIDE TO SECURE. ASSEMBLE 1/4" NPT PUSH-IN FITTING (4) TO THE FAUCET ADAPTER (8).


E- CONNECT WHITE SENSOR CAP (9) TO WHITE VALVE PLUG (10). CONNECT RED SENSOR PLUG (11) TO RED POWER SUPPLY CAP (12).

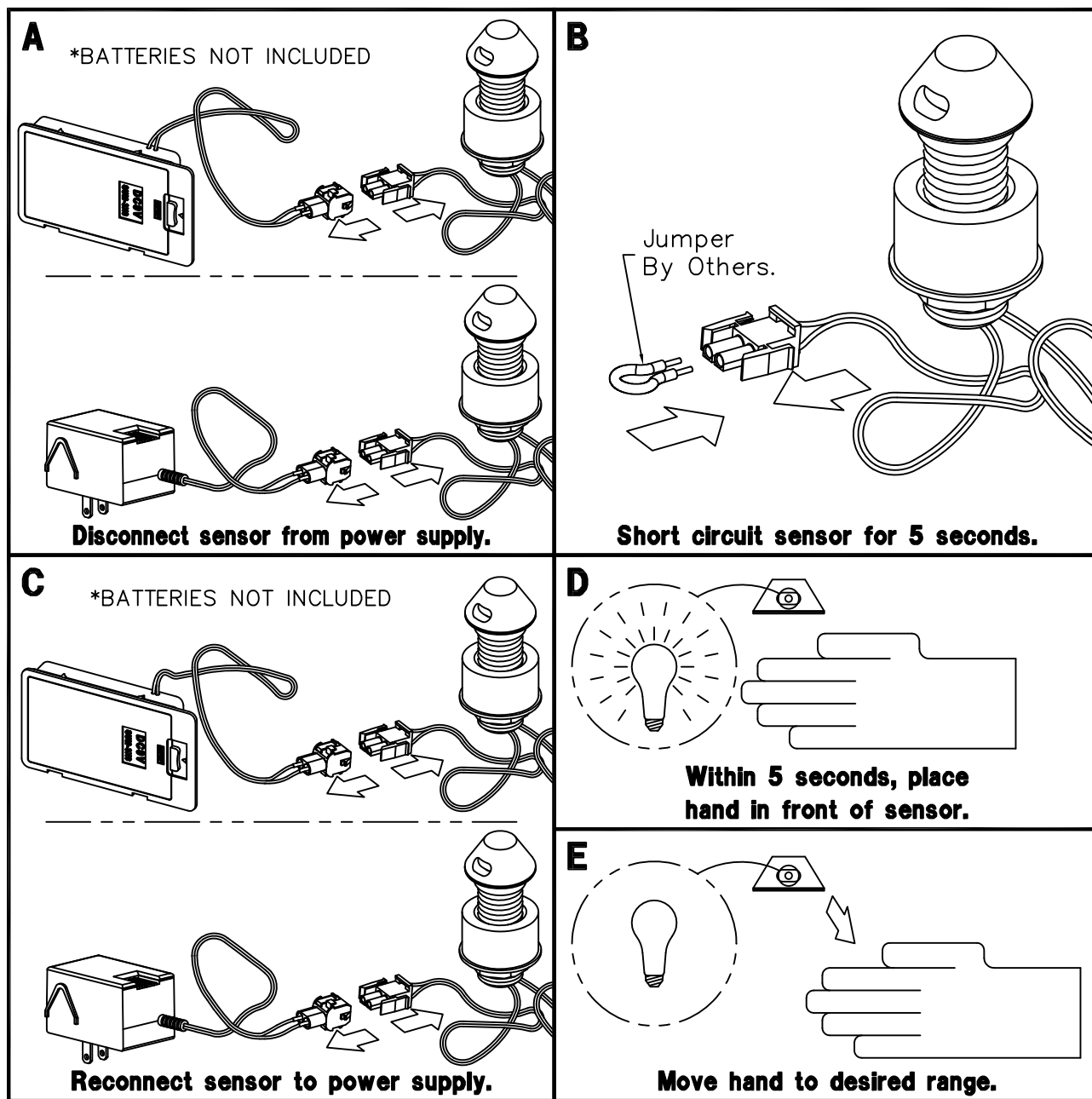
F- CONNECT 1/4" O.D. POLYETHYLENE WATER LINE TO PUSH-IN FITTING AT FAUCET AND VALVE. HAND TIGHTEN FERRULE NUT PROVIDED.

G- AFTER THOROUGHLY FLUSHING SUPPLY LINES MAKE-UP CONNECTIONS TO VALVE ASSEMBLY INLET(S) 1/2" NPT OR 1/2" NPS FLEX HOSE AS REQUIRED.

**NOTE:**

- 1- PLUG-IN TRANSFORMER INCLUDES BUILT-IN SECONDARY FUSE. IN THE EVENT OF POWER SURGE TRANSFORMER MAY REQUIRE REPLACEMENT.
- 2- ELECTRICAL RECEPTACLE MUST BE WIRED TO A GFI PROTECTED CIRCUIT. FIXTURE MUST BE EARTH GROUNDED PER N.E.C. (NATIONAL ELECTRICAL CODE).

 <p>WHITEHALL MANUFACTURING P.O. BOX 3527 Industry, CA 91744 15125 Proctor Ave Industry, CA 91746 (626) 968-6681 FAX (626) 855-4862</p>	<p>TITLE <b>LIGATURE RESISTANT FAUCET *WH3373-WSF-SO &amp; WH3373-WSF-SO-BAT</b></p>		
	<p>MANUFACTURE DATE</p> <p><b>SEPTEMBER 2014</b></p> <p><b>TO PRESENT</b></p>	<p>DATE ISSUED</p> <p><b>04/09/15</b></p>	<p>DRAWING NUMBER</p> <p><b>9918-070-001</b></p>
	<p>DATE REVISED</p>		



**INSTRUCTIONS:**

A- Disconnect sensor from power supply.


B- Create a short circuit between the positive and negative connections on the sensor for five seconds. **WARNING:** Do not create a short circuit on the power supply or while the sensor is connected to the power supply.

C- Reconnect the sensor to the power supply.

D- Within 5 seconds of making the connection, place hand 2 to 4 inches from the sensor.

E- Once red light begins flashing quickly, move hand to preferred distance and wait for light to stop flashing.

F- Check distance. If unsatisfactory, repeat steps A through E.

 WHITEHALL MANUFACTURING P.O. BOX 3527 Industry, CA 91744 15125 Proctor Ave Industry, CA 91746 (626) 968-6681 FAX (626) 855-4862	TITLE <b>9 VOLT DC SENSOR RANGE ADJUSTMENT</b>	
	MANUFACTURE DATE <b>NOVEMBER, 2014 TO PRESENT</b>	DATE ISSUED <b>05/19/15</b> DATE REVISED