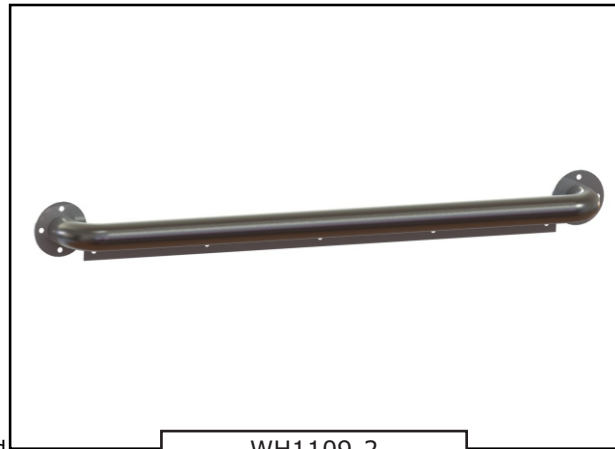




Ligature Resistant Grab Bars

Grab Bars are designed to help meet the needs of the disabled. Grab bars are constructed of 1-1/2" outer diameter type 304 stainless steel tubing with a 14 gage closure plate welded to the bottom of the bar and includes 3" diameter wall flanges. Bottom closure includes intermittent welds along the grab bar with small holes opposite the grab bar to prevent pooling of water and allow water to drain. Flanges have countersunk holes for furnished 2" long stainless steel vandal-resistant screws. Exposed surfaces are polished to a satin finish. Grab bars meet or exceed ANSI, UFAS and ADA requirements for structural strength and have a 1-1/2" space between the grab bar and the mounting surface. Selection of appropriate length, configuration, adequate wall backing and installation dependent on application will determine compliance for accessibility. Consult applicable codes for complete requirements. Compliance is subject to the interpretation and requirements of the local code authority. Grab bars are not recommended for installation in areas of high security.



WH1109-2

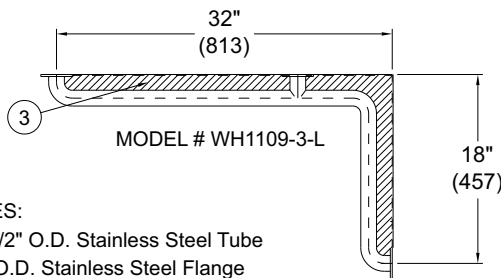
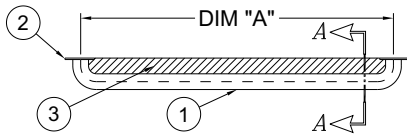
MODEL NUMBER AND OPTIONS SELECTION:

BASE MODEL NUMBER

- WH1109-1 Grab Bar with Closure Plate, 24" Long
- WH1109-2 Grab Bar with Closure Plate, 30" Long
- WH1109-3-L Left Orientation Two-Wall Grab Bar with Closure Plate, 32" x 18" Long
- WH1109-3-R Right Orientation Two-Wall Grab Bar with Closure Plate, 18" x 32" Long
- WH1109-4 Grab Bar with Closure Plate, 36" Long
- WH1109-5 Grab Bar with Closure Plate, 42" Long
- WH1109-6 Grab Bar with Closure Plate, 48" Long
- WH1109-7 Grab Bar with Closure Plate, 18" Long

OPTIONS

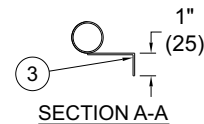
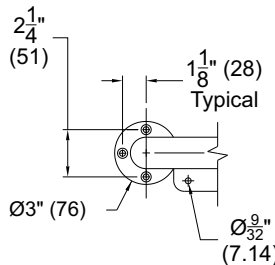
- EG10 "Snow White" Enviro-Glaze Powder Coating



NOTES:

1. 1-1/2" O.D. Stainless Steel Tube
2. 3" O.D. Stainless Steel Flange
3. Intermittent Welded Closure Strip w/ Anchoring Flange

MODEL NO.	DIM "A"
WH1109-1	24" (610)
WH1109-2	30" (762)
WH1109-4	36" (914)
WH1109-5	42" (1067)
WH1109-6	48" (1219)
WH1109-7	18" (457)



DISCLAIMER:

This product is designed to decrease the probability that it may be utilized as an apparatus for ligature. It is not a replacement for professionals who are trained in the proper evaluation, management and supervision of persons at risk of suicide.

WARNING: Cancer and Reproductive Harm - www.P65Warnings.ca.gov

SELECTION SUMMARY & APPROVAL FOR MANUFACTURING

Model Number & Options _____ Quantity _____
 Company _____ Date _____
 Contact _____ Title _____
 Approval for Manufacturing/Signature _____



All dimensions are nominal and subject to manufacturer's change without notice. Whitehall assumes no responsibility for use of void or superseded data © Whitehall Manufacturing, Member of Morris Group International. Please visit www.whitehallmfg.com for most current specifications.