



Whitehall Manufacturing®
 Manufacturer of Healthcare and Rehabilitation Products since 1946

BestCare®
 Patients, Not Prisoners®

**Healthcare and Ligature
 Resistant Products**

Division of
 Acorn Engineering Company®



A MEMBER OF



Whitehall Ligature Resistant High Efficiency Urinal

Model WH2158-W-SLPT-EB-EG10
 (Wall Supply)



WH2158-W-SLPT-EB-EG10

Ligature Resistant High Efficiency Urinal

High Efficiency Urinal is engineered to combine attractive looks, versatility and intended for mounting onto a finished wall from the front side.

Fixture housing is fabricated of 18 gage, with bowl of 16 gage, type 304 stainless steel. All exposed surfaces are powder coated white.

Urinal is a high efficiency type requiring a 0.125 GPF (0.47 Liters per flush) to 0.5 GPF (1.8 Liters per flush) flush valve and supplied with 3/4" NPT flushing inlet connection and stainless steel bee hive dome strainer with 1-1/2" O.D. P-Trap assembly.

Optional Flush Valve is concealed type with cast bronze body. Flush valve supply is available in 0.125 GPF and 0.5 GPF.

Installation is front mount and the fixture includes an enclosed bottom with access panel that can be removed to facilitate mounting directly to a reinforced wall from within the housing.

GUIDE SPECIFICATION

Provide Ligature Resistant Stainless Steel High Efficiency Urinal (specify model number and options). Interior to have a contoured surface to facilitate cleaning. Unit has an enclosed bottom with removable access panel. Fixture shall be fabricated of 18 gage, with 16 gage bowl, type 304 stainless steel. All exposed surfaces are powder coated white.

Please visit www.whitehallmfg.com for most current specifications.



Member of
 U.S. Green
 Building
 Council



Recyclable
 Product



Water
 Conserving
 Product

Complies
 with the
 following
 standards:



Whitehall Mfg. • P.O. Box 3527 • City of Industry, CA 91744 • (800) 782-7706 • (626) 968-6681 • Fax (626) 855-4862

WH2158-W-SLPT

Updated: 08/30/18



MODEL AND OPTIONS SELECTION:

BASE MODEL NUMBER

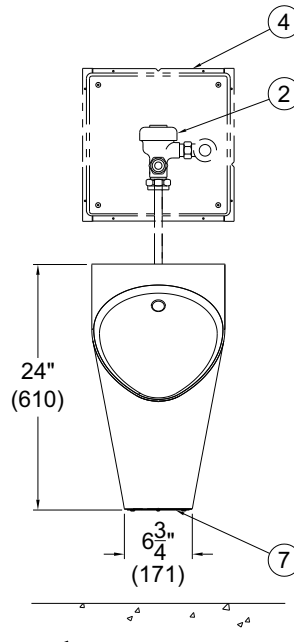
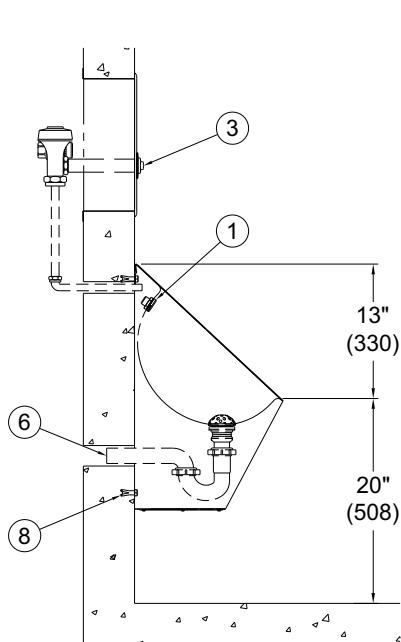
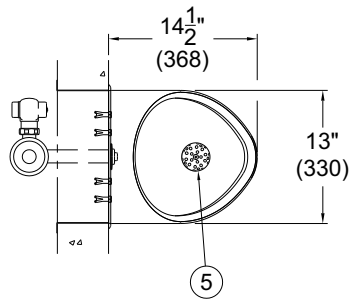
WH2158-W-SLPT-EB-EG10 Ligature Resistant Urinal (White)

With Optional Flush Valve (Must Specify):

- WH2158-W-SLPT-EB-EG10-0.125 Ligature Resistant Urinal with 0.125 GPF Flush Valve (White)
- WH2158-W-SLPT-EB-EG10-0.5 Ligature Resistant Urinal with 0.5 GPF Flush Valve (White)

NOTES:

1. Flush Nozzle
2. Flush Valve
3. Pushbutton
4. 2898 Flush Valve Access Panel
(Shown For Reference)
5. Removable Strainer Assembly
6. 1-1/2" O.D. P-Trap Assembly
7. Removable Access Panel
8. Wall Mounting Anchors
(By Others)



MODEL #WH2158W-SLPT-EB

DISCLAIMER:

This product is designed to decrease the probability that it may be utilized as an apparatus for ligature. It is not a replacement for professionals who are trained in the proper evaluation, management and supervision of persons at risk of suicide.

⚠ WARNING: Cancer and Reproductive Harm - www.P65Warnings.ca.gov

SELECTION SUMMARY & APPROVAL FOR MANUFACTURING

Model Number & Options _____ Quantity _____
 Company _____ Date _____
 Contact _____ Title _____
 Approval for Manufacturing/Signature _____

All dimensions are nominal and subject to manufacturer's change without notice. Whitehall assumes no responsibility for use of void or superseded data © Whitehall Manufacturing, Member of Morris Group International. Please visit www.whitehallmfg.com for most current specifications.