



**MEGA**  
**COMFORT**™  
WORK-LIFE WELLNESS SOLUTIONS

**UNLOCK.**  
**POTENTIAL.**

# IS YOUR COMPANY AT RISK?

**1** INCREASING INJURY INCIDENTS



## 32.2% OF ALL INJURY INCIDENTS

Listed and accounted as **MUSCULOSKELETAL DISORDERS (MSD'S)**



**MSD'S (OVEREXERTION)**  
**\$15.08 BILLION**  
 IN DIRECT COSTS <sup>1</sup>

**SLIPS, TRIPS & FALLS**  
**\$10.17 BILLION**  
 IN DIRECT COSTS <sup>1</sup>

**2** AGING WORKFORCE

**42.1 MILLION**  
 WORKERS OVER THE AGE 55 BY 2026 <sup>2</sup>  
 Projected INCREASE from 35.7 million in 2016



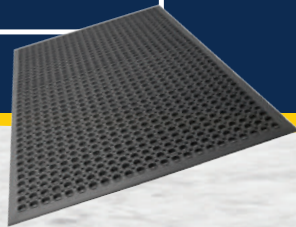
AGING WORKERS WILL MAKE UP NEARLY **ONE QUARTER** OF THE LABOR FORCE <sup>2</sup>

AGING WORKERS ARE **19.8%** MORE PRONE TO MSD

<sup>3</sup> AGE: 25-34  
 INCIDENCE RATE: 92.9

<sup>3</sup> AGE: 55-64  
 INCIDENCE RATE: 115.8

**3** INEFFECTIVE ANTI-FATIGUE SOLUTIONS



### ANTI-FATIGUE MATTING

Doesn't cover the 360-degree work area

Movement and gradual wear & tear causes the matting to curl

Regular cleaning and maintenance

### EFFECTS

➤ More unprotected area's in the facility, increasing the chances of injuries

➤ Increasing risk of slips trips and falls

➤ Causes inefficiency and decrease in productivity

Source:  
 1. 2016 Liberty Mutual Workplace Safety Index, America's Aging Workforce: Opportunities and Challenges.  
 2. Special Committee on Aging United States Senate, December, 2017  
 3. <https://www.bls.gov/news.release/osh2.htm>

# UNLOCK. SOLUTIONS.

MEGAComfort's work-life wellness safety solutions are created to maximize employee engagement, motivation, and productivity in a cost effective way.



Ergonomically Designed by a Doctor



\*Patented Dual Layer 100% Memory Foam



Over 15 Years of Research and Development



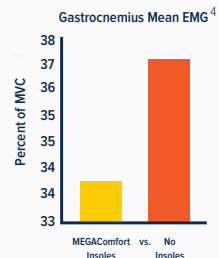
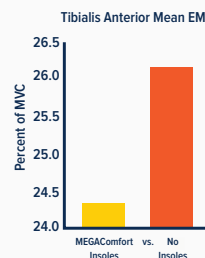
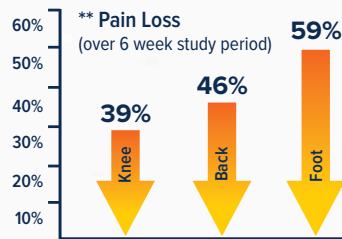
Clinically Proven & Field Tested to Reduce Pain & Fatigue

## WHY CHOOSE MEGAComfort?



### CLINICALLY PROVEN & FIELD TESTED

- To Reduce Foot, Knee & Back Pain by 35% on Average.
- To Reduce Muscle Fatigue - *EMG data revealed an overall reduction in lower extremity muscle activity by 9.6%.<sup>4</sup>*



### RISK AVOIDANCE AND REDUCTIONS

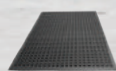
- ⓘ Assist in ESD initiatives - reduce static charges from the employees
- ⓘ Protects from sharp objects such as shards of glass, metal & nails
- ⓘ Temporary protection where there is a risk of toe damage
- ⓘ Protection from extreme temperature

### MEGAComfort INSOLES VS ANTI-FATIGUE MATTING

- Decreases - safety hazards such as slips, trips, & falls that cause sprains, strains
- 360-degree protection across entire facility, each work station, & beyond
- Implementation, maintenance, cleaning, replacement is fast, simple, & affordable
- Ease of implementation: Vend Friendly Packaging

### COST EFFECTIVE SOLUTION

Example of cost savings in a factory of 250 workers



MATTING COST PER WORKER  
**\$180**

vs.



INSOLES COST PER WORKER  
**\$25**

(\$180 - \$25) x 250 WORKERS

**\$38,750**

Cost Savings with Insoles

Source:  
4. Ergonomics International Journal - Insole Program in the Manufacturing Setting www.medwinpublishers.com/EIJ/EIJ16000121.pdf  
\* Patent US # 8,832,969 CA # 2,654,607



**WORK-LIFE WELLNESS SAFETY SOLUTIONS  
ACROSS ALL INDUSTRIES**

**MEGA  
COMFORT**<sup>™</sup>  
WORK-LIFE WELLNESS SOLUTIONS